



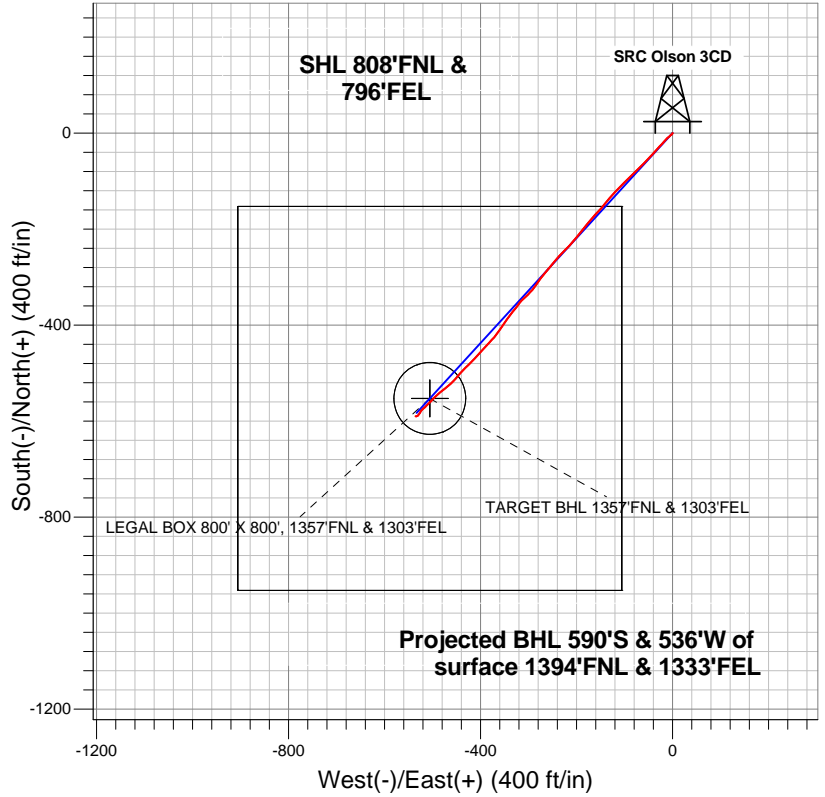
# Well Name: SRC Olson 3CD

Surface Location: SRC Olson 41-3 Pad Sec.3-T3N-R68W  
 North American Datum 1983 US State Plane 1983 Colorado Northern Zone  
 Ground Elevation: 5042.0  

+N/-S	+E/-W	Northing	Easting	Latitude	Longitude	Slot
0.0	0.0	1338132.15	3144363.92	40.260416	-104.982719	

 Original Well Elev WELL @ 5055.0ft (Original Well Elev)

## Synergy Resources



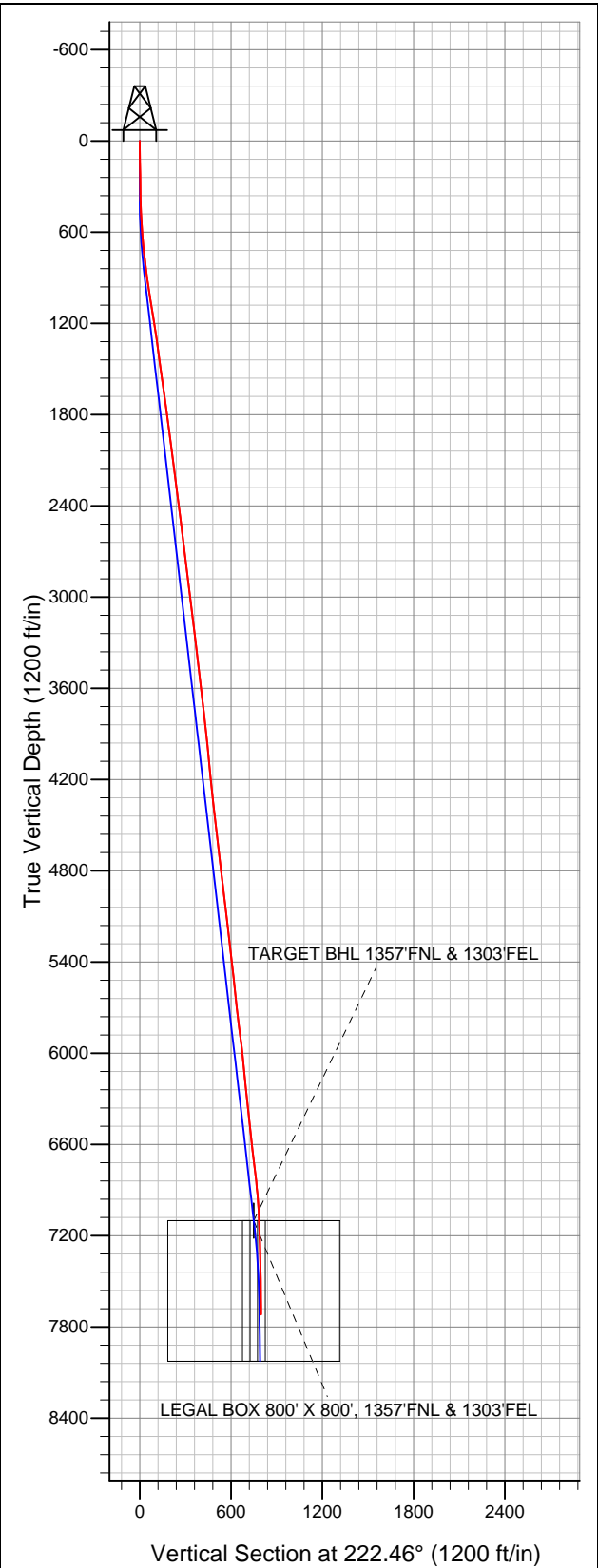
### LEGEND

- ▲ SRC Olson 3CD, Wellbore #1, Plan #2 (9-14-12) R V0
- Wellbore #1
- Survey #1

## Final Survey Plot

Projected Final Survey -  
 7764'MD & 7717'TVD @ 797'VS  
 0.90 deg Inc 279.50 deg AZ

Project: SEC.3-T3N-R68W  
 Site: SRC Olson 41-3 Pad Sec.3-T3N-R68W  
 Well: SRC Olson 3CD  
 Plan: Wellbore #1





## **Directional**

### **Synergy Resources**

**SEC.3-T3N-R68W**

**SRC Olson 41-3 Pad Sec.3-T3N-R68W**

**SRC Olson 3CD**

**Wellbore #1**

**Survey: Survey #1**

### **Standard Survey Report**

**24 September, 2012**



<b>Company:</b>	Synergy Resources	<b>Local Co-ordinate Reference:</b>	Well SRC Olson 3CD
<b>Project:</b>	SEC.3-T3N-R68W	<b>TVD Reference:</b>	WELL @ 5055.0ft (Original Well Elev)
<b>Site:</b>	SRC Olson 41-3 Pad Sec.3-T3N-R68W	<b>MD Reference:</b>	WELL @ 5055.0ft (Original Well Elev)
<b>Well:</b>	SRC Olson 3CD	<b>North Reference:</b>	True
<b>Wellbore:</b>	Wellbore #1	<b>Survey Calculation Method:</b>	Minimum Curvature
<b>Design:</b>	Wellbore #1	<b>Database:</b>	Landmark

Survey										
Measured Depth (ft)	Inclination (°)	Azimuth (°)	Vertical Depth (ft)	+N/-S (ft)	+E/-W (ft)	Vertical Section (ft)	Dogleg Rate (°/100ft)	Build Rate (°/100ft)	Turn Rate (°/100ft)	
1,245.0	8.40	224.00	1,238.9	-72.2	-69.3	100.0	0.56	-0.55	-0.70	
1,373.0	7.80	224.30	1,365.6	-85.1	-81.8	118.0	0.47	-0.47	0.23	
1,501.0	8.00	228.40	1,492.4	-97.3	-94.5	135.6	0.47	0.16	3.20	
1,630.0	8.40	224.50	1,620.1	-109.9	-107.9	153.9	0.53	0.31	-3.02	
1,758.0	7.70	222.90	1,746.8	-122.9	-120.3	171.8	0.57	-0.55	-1.25	
1,886.0	7.90	220.60	1,873.6	-135.8	-131.8	189.2	0.29	0.16	-1.80	
2,014.0	7.60	217.80	2,000.5	-149.2	-142.7	206.4	0.38	-0.23	-2.19	
2,142.0	6.60	224.00	2,127.5	-161.2	-153.0	222.2	0.98	-0.78	4.84	
2,270.0	6.70	221.30	2,254.6	-172.1	-163.1	237.0	0.26	0.08	-2.11	
2,399.0	7.70	220.30	2,382.6	-184.3	-173.6	253.2	0.78	0.78	-0.78	
2,527.0	7.70	219.80	2,509.4	-197.5	-184.7	270.3	0.05	0.00	-0.39	
2,655.0	7.20	216.60	2,636.4	-210.5	-194.9	286.9	0.51	-0.39	-2.50	
2,784.0	6.90	219.20	2,764.4	-223.0	-204.6	302.7	0.34	-0.23	2.02	
2,912.0	6.90	224.90	2,891.5	-234.4	-214.9	318.0	0.53	0.00	4.45	
3,040.0	6.90	225.60	3,018.5	-245.2	-225.8	333.4	0.07	0.00	0.55	
3,168.0	7.00	220.10	3,145.6	-256.6	-236.4	348.8	0.53	0.08	-4.30	
3,296.0	6.30	221.70	3,272.7	-267.8	-246.1	363.7	0.57	-0.55	1.25	
3,425.0	7.00	219.80	3,400.9	-279.1	-255.8	378.6	0.57	0.54	-1.47	
3,553.0	7.00	219.80	3,527.9	-291.1	-265.8	394.2	0.00	0.00	0.00	
3,681.0	6.70	216.30	3,655.0	-303.1	-275.2	409.4	0.40	-0.23	-2.73	
3,810.0	6.40	213.60	3,783.2	-315.1	-283.6	424.0	0.33	-0.23	-2.09	
3,938.0	6.50	220.80	3,910.3	-326.6	-292.3	438.3	0.64	0.08	5.63	
4,066.0	5.30	225.40	4,037.7	-336.2	-301.3	451.4	1.01	-0.94	3.59	
4,194.0	5.50	228.40	4,165.1	-344.4	-310.1	463.4	0.27	0.16	2.34	
4,323.0	5.70	215.40	4,293.5	-353.8	-318.4	475.9	0.99	0.16	-10.08	
4,451.0	6.90	219.90	4,420.7	-364.8	-327.0	489.9	1.01	0.94	3.52	
4,580.0	6.20	218.50	4,548.9	-376.2	-336.3	504.6	0.56	-0.54	-1.09	
4,708.0	6.70	216.10	4,676.1	-387.7	-345.0	518.9	0.44	0.39	-1.88	
4,837.0	7.70	213.40	4,804.0	-401.0	-354.2	534.9	0.82	0.78	-2.09	
4,965.0	7.00	214.70	4,931.0	-414.5	-363.4	551.1	0.56	-0.55	1.02	
5,093.0	5.60	221.50	5,058.2	-425.6	-371.9	565.1	1.24	-1.09	5.31	
5,222.0	6.80	222.80	5,186.5	-436.0	-381.3	579.0	0.94	0.93	1.01	
5,350.0	7.20	223.30	5,313.5	-447.3	-392.0	594.6	0.32	0.31	0.39	
5,478.0	5.70	221.00	5,440.7	-458.0	-401.6	609.0	1.19	-1.17	-1.80	
5,606.0	6.80	223.60	5,567.9	-468.3	-411.0	622.9	0.89	0.86	2.03	
5,735.0	6.20	227.50	5,696.1	-478.5	-421.4	637.5	0.58	-0.47	3.02	
5,863.0	6.80	224.20	5,823.3	-488.6	-431.8	652.0	0.55	0.47	-2.58	
5,992.0	7.20	220.80	5,951.3	-500.2	-442.4	667.7	0.45	0.31	-2.64	
6,120.0	5.40	219.50	6,078.5	-510.9	-451.5	681.7	1.41	-1.41	-1.02	
6,248.0	6.20	229.10	6,205.9	-520.1	-460.5	694.6	0.98	0.63	7.50	
6,376.0	5.60	226.40	6,333.2	-528.9	-470.3	707.7	0.52	-0.47	-2.11	
6,504.0	6.20	237.30	6,460.5	-537.0	-480.6	720.6	0.99	0.47	8.52	
6,632.0	6.80	223.30	6,587.7	-546.2	-491.6	734.9	1.32	0.47	-10.94	
6,761.0	6.80	224.30	6,715.8	-557.2	-502.2	750.1	0.09	0.00	0.78	
6,889.0	6.40	224.90	6,843.0	-567.7	-512.5	764.8	0.32	-0.31	0.47	
7,018.0	4.20	229.40	6,971.4	-575.9	-521.2	776.7	1.73	-1.71	3.49	
7,144.9	2.21	201.54	7,098.1	-581.2	-525.6	783.6	1.95	-1.57	-21.95	
TARGET CIRCLE 1357'FNL & 1303'FEL										
7,145.5	2.21	201.31	7,098.7	-581.2	-525.6	783.6	1.93	-1.17	-39.87	
LEGAL BOX 800' X 800', 1357'FNL & 1303'FEL - TARGET BHL 1357'FNL & 1303'FEL										
7,146.0	2.20	201.10	7,099.2	-581.2	-525.7	783.7	1.96	-1.18	-40.73	
7,274.0	2.30	216.10	7,227.1	-585.6	-528.0	788.5	0.47	0.08	11.72	
7,403.0	0.90	240.30	7,356.1	-588.2	-530.5	792.0	1.18	-1.09	18.76	
7,531.0	0.90	240.30	7,484.0	-589.2	-532.2	793.9	0.00	0.00	0.00	

<b>Company:</b>	Synergy Resources	<b>Local Co-ordinate Reference:</b>	Well SRC Olson 3CD
<b>Project:</b>	SEC.3-T3N-R68W	<b>TVD Reference:</b>	WELL @ 5055.0ft (Original Well Elev)
<b>Site:</b>	SRC Olson 41-3 Pad Sec.3-T3N-R68W	<b>MD Reference:</b>	WELL @ 5055.0ft (Original Well Elev)
<b>Well:</b>	SRC Olson 3CD	<b>North Reference:</b>	True
<b>Wellbore:</b>	Wellbore #1	<b>Survey Calculation Method:</b>	Minimum Curvature
<b>Design:</b>	Wellbore #1	<b>Database:</b>	Landmark

Survey									
Measured Depth (ft)	Inclination (°)	Azimuth (°)	Vertical Depth (ft)	+N-S (ft)	+E-W (ft)	Vertical Section (ft)	Dogleg Rate (°/100ft)	Build Rate (°/100ft)	Turn Rate (°/100ft)
7,660.0	0.70	254.00	7,613.0	-589.9	-533.8	795.6	0.21	-0.16	10.62
7,722.0	0.90	279.50	7,675.0	-589.9	-534.7	796.2	0.65	0.32	41.13
7,764.0	0.90	279.50	7,717.0	-589.8	-535.3	796.5	0.00	0.00	0.00

Wellbore Targets									
Target Name	Dip Angle (°)	Dip Dir. (°)	TVD (ft)	+N-S (ft)	+E-W (ft)	Northing (ft)	Easting (ft)	Latitude	Longitude
TARGET CIRCLE 1357'F - hit/miss target - Shape - survey misses target center by 34.9ft at 7145.5ft MD (7098.7 TVD, -581.2 N, -525.6 E) - Circle (radius 75.0)	0.00	0.00	7,100.0	-552.6	-505.7	1,337,576.65	3,143,861.48	40.258899	-104.984531
LEGAL BOX 800' X 800' - survey misses target center by 34.9ft at 7145.5ft MD (7098.7 TVD, -581.2 N, -525.6 E) - Rectangle (sides W800.0 H800.0 D925.0)	0.00	0.00	7,100.0	-552.6	-505.7	1,337,576.65	3,143,861.48	40.258899	-104.984531
TARGET BHL 1357'F - survey misses target center by 34.9ft at 7145.5ft MD (7098.7 TVD, -581.2 N, -525.6 E) - Point	0.00	0.00	7,100.0	-552.6	-505.7	1,337,576.61	3,143,861.45	40.258899	-104.984531

Checked By: \_\_\_\_\_ Approved By: \_\_\_\_\_ Date: \_\_\_\_\_