

## **SYNERGY RESOURCES CORPORATION**

Olson  
Olson 32-3D

Ensign/226

# **Post Job Summary** **Cement Surface Casing**

Date Prepared: 12/08/2012  
Version: 1

Service Supervisor: NIELSON, BRANDON

Submitted by: MCKAY, ADAM

**HALLIBURTON**

# HALLIBURTON

## ***Wellbore Geometry***

---

Job Tubulars					MD		TVD	
Type	Description	Size in	ID in	Wt lbm/ft	Top ft	Bottom ft	Top ft	Bottom ft
Open Hole Section	Open Hole		12.250		0.00	1,032.00	0.00	1,032.00
Casing	Surface Casing	8.63	8.097	24.00	0.00	1,024.00	0.00	1,024.00

## ***Pumping Schedule***

---

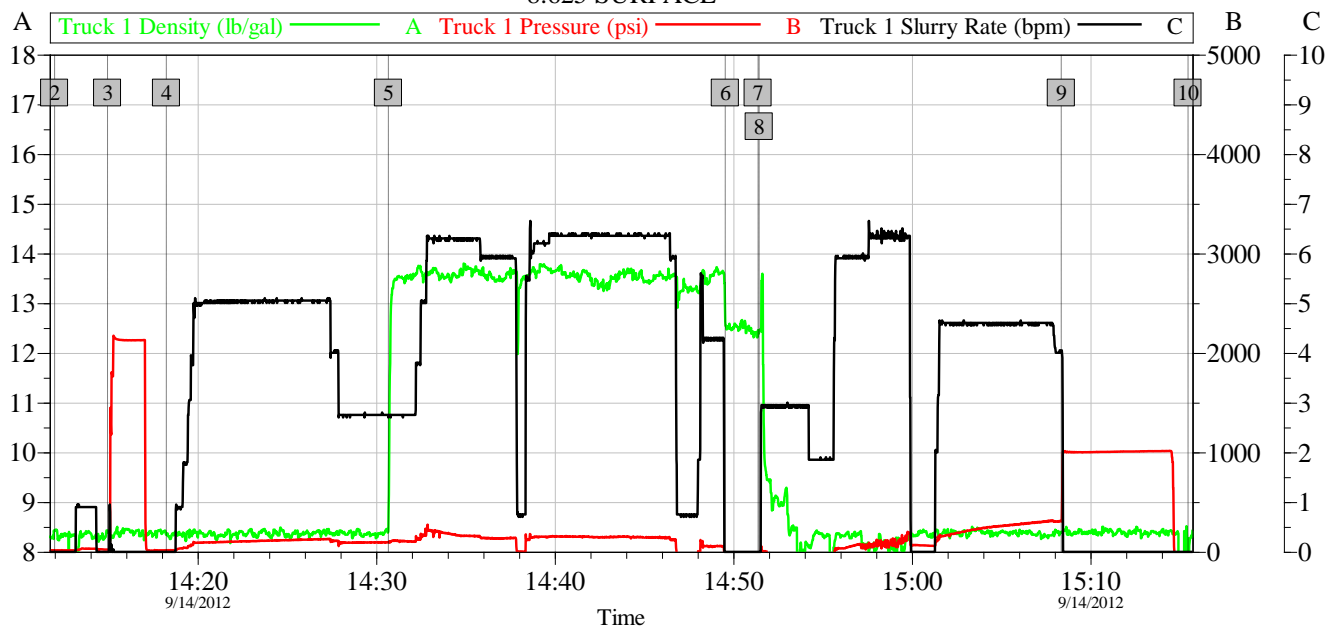
Stage /Plug #	Fluid #	Fluid Type	Fluid Name	Surface Density lbm/gal	Avg Rate bbl/min	Surface Volume	Downhole Volume
1	1	Spacer	Fresh Water Spacer	8.33	5.00	50.0 bbl	50.0 bbl
1	2	Cement Slurry	SwiftCem B2	13.40	6.00	315.0 sacks	315.0 sacks

## ***Data Acquisition***

---

## SYNERGY OLSON 32-3D

8.625 SURFACE



Global Event Log							
Intersection	T1P	Intersection	T1P	Intersection	T1P	Intersection	T1P
1 Starting Job	13:28:42 0.000	2 Start Job	14:11:59 15.90	3 Test Lines	14:14:57 22.36		
4 Pump Spacer 1	14:18:14 15.56	5 Pump Cement	14:30:40 97.24	6 Shutdown	14:49:32 -19.45		
7 Drop Top Plug	14:51:23 -21.39	8 Pump Displacement	14:51:26 -22.34	9 Bump Plug	15:08:21 309.2		
10 End Job	15:15:27 -7.778	11 Ending Job	15:21:19 7.778				

Customer: SYNERGY	Job Date: 14-Sep-2012	Sales Order #: 9816803	OptiCem v6.4.10 14-Sep-12 15:24
Well Description: SURFACE	UWI: 05-123-35922-00	ENSING 226	

## Service Supervisor Reports

### Job Log

Date/Time	Chart #	Activity Code	Pump Rate	Cum Vol	Pump		Pressure (psig)	Comments
09/14/2012 14:14		Pump Spacer 1						TESTED LINES TO 2000 PSI NO VISIBLE LEAKS
09/14/2012 14:18		Pump Spacer 1	5	50			113.0	40 BBL FRESH WATER FALLOWED BY 10 BBL DYE
09/14/2012 14:30		Pump Cement	6	103			97.0	315 SKS SWIFTCEM MIXED @ 13.5 WITH RIG WATER
09/14/2012 14:49		Shutdown						
09/14/2012 14:51		Drop Top Plug						PLUG PRE LOADED WITNESSED BY COMPANY REP
09/14/2012 14:51		Pump Displacement	4.5	62.5			285.0	RIG WATER. GOOD RETURNS THOUGH OUT 17.5 BBLCMT BACK TO SURFACE.
09/14/2012 15:08		Bump Plug	3				325.0	CALCULATED PRESSURE TO LAND WAS 264 PSI
09/14/2012 15:12		Check Floats						FLOATS HELD
09/14/2012 15:15		End Job						

# HALLIBURTON

## The Road to Excellence Starts with Safety

<b>Sold To #:</b> 359915		<b>Ship To #:</b> 2951344		<b>Quote #:</b>		<b>Sales Order #:</b> 9816803	
<b>Customer:</b> SYNERGY RESOURCES CORPORATION				<b>Customer Rep:</b> Weitzel, Craig			
<b>Well Name:</b> Olson			<b>Well #:</b> 32-3D			<b>API/UWI #:</b> 05-123-35922-00	
<b>Field:</b> WATTENBERG		<b>City (SAP):</b> MEAD		<b>County/Parish:</b> Weld		<b>State:</b> Colorado	
<b>Contractor:</b> Ensign			<b>Rig/Platform Name/Num:</b> 226				
<b>Job Purpose:</b> Cement Surface Casing							
<b>Well Type:</b> Development Well			<b>Job Type:</b> Cement Surface Casing				
<b>Sales Person:</b> AARON, WESLEY			<b>Srvc Supervisor:</b> NIELSON, BRANDON			<b>MBU ID Emp #:</b> 479703	

### Job Personnel

HES Emp Name	Exp Hrs	Emp #	HES Emp Name	Exp Hrs	Emp #	HES Emp Name	Exp Hrs	Emp #
BOURGEOIS, KEVIN Paul	7.5	459092	MARKOVICH, STEVEN Michael	7.5	502964	NIELSON, BRANDON K	7.5	479703
PETERSON, ERIC Eugene	7.5	213272	SANFORD, DALE A	7.5	219527			

### Equipment

HES Unit #	Distance-1 way	HES Unit #	Distance-1 way	HES Unit #	Distance-1 way	HES Unit #	Distance-1 way
10824253C	25 mile	10951212	25 mile	11526488	25 mile	11764052	25 mile

### Job Hours

Date	On Location Hours	Operating Hours	Date	On Location Hours	Operating Hours	Date	On Location Hours	Operating Hours

**TOTAL** Total is the sum of each column separately

### Job

### Job Times

Formation Name						Date	Time	Time Zone
Formation Depth (MD)	Top		Bottom		Called Out	14 - Sep - 2012	05:00	MST
Form Type		BHST			On Location	14 - Sep - 2012	08:30	MST
Job depth MD	1032. ft	Job Depth TVD	1032. ft		Job Started	14 - Sep - 2012	14:15	MST
Water Depth		Wk Ht Above Floor	3. ft		Job Completed	14 - Sep - 2012	15:15	MST
Perforation Depth (MD)	From		To		Departed Loc	14 - Sep - 2012	16:00	MST

### Well Data

Description	New / Used	Max pressure psig	Size in	ID in	Weight lbm/ft	Thread	Grade	Top MD ft	Bottom MD ft	Top TVD ft	Bottom TVD ft
Open Hole				12.25				.	1032.	.	1032.
Surface Casing	Mixed		8.625	8.097	24.			.	1024.	.	1024.

### Tools and Accessories

Type	Size	Qty	Make	Depth	Type	Size	Qty	Make	Depth	Type	Size	Qty	Make
Guide Shoe					Packer					Top Plug			
Float Shoe					Bridge Plug					Bottom Plug			
Float Collar					Retainer					SSR plug set			
Insert Float										Plug Container			
Stage Tool										Centralizers			

### Miscellaneous Materials

Gelling Agt		Conc		Surfactant		Conc		Acid Type		Qty		Conc	%
Treatment Fld		Conc		Inhibitor		Conc		Sand Type		Size		Qty	

### Fluid Data

**Stage/Plug #: 1**

# HALLIBURTON

Fluid #	Stage Type	Fluid Name	Qty	Qty uom	Mixing Density lbm/gal	Yield ft <sup>3</sup> /sk	Mix Fluid Gal/sk	Rate bbl/min	Total Mix Fluid Gal/sk
1	Fresh Water Spacer		50.00	bbl	8.33	.0	.0	.0	
2	SwiftCem B2	SWIFTCEM (TM) SYSTEM (452990)	315.0	sacks	13.4	1.84	9.73		9.73
9.73 Gal		FRESH WATER							
<b>Calculated Values</b>		<b>Pressures</b>		<b>Volumes</b>					
<i>Displacement</i>		<b>Shut In: Instant</b>		<b>Lost Returns</b>		<i>Cement Slurry</i>		<b>Pad</b>	
<b>Top Of Cement</b>		<b>5 Min</b>		<b>Cement Returns</b>		<b>Actual Displacement</b>		<b>Treatment</b>	
<b>Frac Gradient</b>		<b>15 Min</b>		<b>Spacers</b>		<b>Load and Breakdown</b>		<b>Total Job</b>	
<b>Rates</b>									
<i>Circulating</i>		<i>Mixing</i>		<i>Displacement</i>		<b>Avg. Job</b>			
<i>Cement Left In Pipe</i>		<b>Amount</b>	<b>0 ft</b>	<i>Reason</i>	<b>Shoe Joint</b>				
<i>Frac Ring # 1 @</i>	<i>ID</i>	<i>Frac ring # 2 @</i>	<i>ID</i>	<i>Frac Ring # 3 @</i>	<i>ID</i>	<i>Frac Ring # 4 @</i>	<i>ID</i>		
The Information Stated Herein Is Correct				<b>Customer Representative Signature</b>					