

SYNERGY RESOURCES CORPORATION
20203 HIGHWAY 60
PLATTEVILLE, Colorado

Avex
Avex 32-10D

Ensign/136

Post Job Summary

Cement Production Casing

Date Prepared: 10/16/2012
Version: 1

Service Supervisor: ROSALES, MATTHEW

Submitted by: MCKAY, ADAM

HALLIBURTON

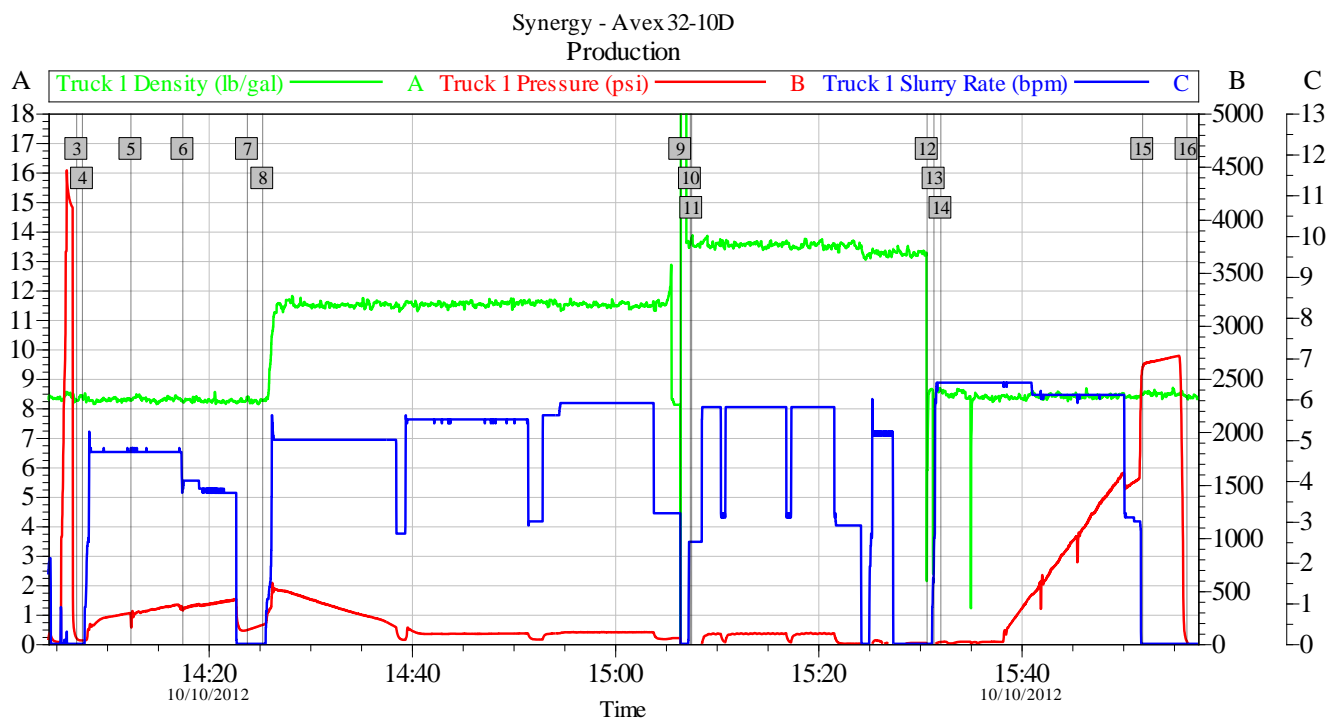
Wellbore Geometry

Job Tubulars					MD		Shoe Joint Length ft
Type	Description	Size in	ID in	Wt lbm/ft	Top ft	Bottom ft	
Casing	Production Casing	4.50	4.000	11.60	0.00	7,800.00	18.00
Open Hole Section	Open Hole		7.875		607.00	7,816.00	
Casing	Surface Casing	8.63	8.097	24.00	0.00	607.00	

Pumping Schedule

Stage /Plug #	Fluid #	Fluid Type	Fluid Name	Surface Density lbm/gal	Avg Rate bbl/min	Surface Volume	Downhole Volume
1	1	Spacer	MUD FLUSH III	8.40	5.00	24.0 bbl	24.0 bbl
1	2	Cement Slurry	EXTENDACEM B1	11.50	6.00	515.0 sacks	515.0 sacks
1	3	Cement Slurry	FracCem B2	13.50	6.00	270.0 sacks	270.0 sacks

Data Acquisition



Global Event Log			
3 Test Lines	14:07:03	4 Pump Water Spacer	14:07:37
5 Pump Mudflush III	14:12:23	6 Pump Water Spacer	14:17:30
7 Shutdown Mix Lead Cement	14:23:51	8 Pump Extendacem Lead 11.5#/gal	14:25:21
9 Flex Malfunction	15:06:29	10 Flex Malfunction	15:07:26
11 Pump Fracem Tail 13.5#/gal	15:07:34	12 Shutdown/ Clean Lines	15:30:44
13 Drop Top Plug	15:31:25	14 Pump Displacement	15:32:06
15 Bump Plug	15:51:57	16 End Job	15:56:19

Customer: Synergy	Job Date: 10-Oct-2012	Sales Order #: 9879680
Well Description: Avex 32-10D	UWI: 05-123-34999	
Halliburton Service Supervisor: Matthew J. Rosales	Halliburton Operator: Jerome Chavez	

OptiCem v6.4.10
10-Oct-12 16:17

Service Supervisor Reports

Job Log

Date/Time	Chart #	Activity Code	Pump Rate	Cum Vol	Pump		Pressure (psig)	Comments
10/10/2012 14:06		Start Job						
10/10/2012 14:06		Test Lines	0.5	0.4			4300.0	
10/10/2012 14:07		Pump Spacer 1	5	20			300.0	WATER SPACER
10/10/2012 14:12		Pump Spacer 2	5	24			335.0	MUDFLUSH III
10/10/2012 14:17		Pump Spacer 1	5	20			475.0	WATER SPACER
10/10/2012 14:25		Pump Lead Cement	5	211			600.0	EXTENDACEM LEAD CEMENT: 515SKS, 1184.5CUFT, 2.3CUFT/SK, 12.93GAL/SK, 11.5#/GAL
10/10/2012 15:07		Pump Tail Cement	6	83.7			100.0	FRACCEM TAIL CEMENT: 270SKS, 469.8CUFT, 1.74CUFT/SK, 8.29GAL/SK, 13.5#/GAL
10/10/2012 15:30		Shutdown						
10/10/2012 15:31		Drop Top Plug						PLUG LOADED WHILE WASHING PUMPS AND LINES
10/10/2012 15:32		Pump Displacement	6	116			1600.0	FRESH WATER DISPLACE WITH CLAYWEB
10/10/2012 15:51		Bump Plug	3				2700.0	
10/10/2012 15:56		Check Floats						FLOATS HELD, 1BBL BACK TO PUMP WHEN PRESSURE RELEASED, 20BBL WATER AND 2BBL MUD FLUSH TO SURFACE
10/10/2012 15:57		End Job						

HALLIBURTON

The Road to Excellence Starts with Safety

Sold To #: 359915		Ship To #: 2955013		Quote #:		Sales Order #: 9879680	
Customer: SYNERGY RESOURCES CORPORATION				Customer Rep: Weitzel, Charlie			
Well Name: Avex			Well #: 32-10D			API/UWI #: 05-123-34999	
Field: WATTENBERG		City (SAP): JOHNSTOWN		County/Parish: Weld		State: Colorado	
Contractor: Ensign			Rig/Platform Name/Num: 136				
Job Purpose: Cement Production Casing							
Well Type: Development Well			Job Type: Cement Production Casing				
Sales Person: AARON, WESLEY			Srvc Supervisor: ROSALES, MATTHEW			MBU ID Emp #: 392095	

Job Personnel

HES Emp Name	Exp Hrs	Emp #	HES Emp Name	Exp Hrs	Emp #	HES Emp Name	Exp Hrs	Emp #
CHAVEZ, JEROME Christophe	4.5	458298	EDWARDS, MICHEAL H	4.5	522592	FINNEY, SEAN	4.5	525706
HETZLER, JEFFREY Charles	4.5	527677	JEWELL, WILLIAM Uris	4.5	503358	ROSALES, MATTHEW John	4.5	392095

Equipment

HES Unit #	Distance-1 way	HES Unit #	Distance-1 way	HES Unit #	Distance-1 way	HES Unit #	Distance-1 way
10822531C	30 mile	11036295C	30 mile	11605598	30 mile	11633846C	30 mile
11633848	30 mile	11645065	30 mile	11812069C	30 mile		

Job Hours

Date	On Location Hours	Operating Hours	Date	On Location Hours	Operating Hours	Date	On Location Hours	Operating Hours
TOTAL			Total is the sum of each column separately					

Job

Formation Name					Job Times			
Formation Depth (MD)	Top	Bottom			Called Out	Date	Time	Time Zone
Form Type			BHST		On Location	10 - Oct - 2012	12:30	MST
Job depth MD	7816. ft		Job Depth TVD		Job Started	10 - Oct - 2012	14:06	MST
Water Depth			Wk Ht Above Floor		Job Completed	10 - Oct - 2012	15:56	MST
Perforation Depth (MD)	From	To			Departed Loc	10 - Oct - 2012	17:00	MST

Well Data

Description	New / Used	Max pressure psig	Size in	ID in	Weight lbm/ft	Thread	Grade	Top MD ft	Bottom MD ft	Top TVD ft	Bottom TVD ft
Open Hole				7.875				607.	7816.	.	.
Production Casing	Unknown		4.5	4.	11.6			.	7800.	.	.
Surface Casing	Unknown		8.625	8.097	24.			.	607.	.	.

Tools and Accessories

Type	Size	Qty	Make	Depth	Type	Size	Qty	Make	Depth	Type	Size	Qty	Make
Guide Shoe					Packer					Top Plug			
Float Shoe					Bridge Plug					Bottom Plug			
Float Collar					Retainer					SSR plug set			
Insert Float										Plug Container			
Stage Tool										Centralizers			

Miscellaneous Materials

Gelling Agt		Conc		Surfactant		Conc		Acid Type		Qty		Conc	%
Treatment Fld		Conc		Inhibitor		Conc		Sand Type		Size		Qty	

Fluid Data

HALLIBURTON

Stage/Plug #: 1										
Fluid #	Stage Type	Fluid Name	Qty	Qty uom	Mixing Density lbm/gal	Yield ft ³ /sk	Mix Fluid Gal/sk	Rate bbl/min	Total Mix Fluid Gal/sk	
1	MUD FLUSH III	MUD FLUSH III - SBM (528788)	24.00	bbl	8.4					
2	EXTENDACEM B1	EXTENDACEM (TM) SYSTEM (452981)	515.0	sacks	11.5	2.3	12.95		12.95	
0.2 %		SUPER CBL, 50 LB PAIL (100003668)								
12.95 Gal		FRESH WATER								
3	FracCem B2	FRACCEN (TM) SYSTEM (452963)	270.0	sacks	13.5	1.74	8.29		8.29	
8.289 Gal		FRESH WATER								
Calculated Values		Pressures		Volumes						
Displacement		Shut In: Instant		Lost Returns		Cement Slurry		Pad		
Top Of Cement		5 Min		Cement Returns		Actual Displacement		Treatment		
Frac Gradient		15 Min		Spacers		Load and Breakdown		Total Job		
Rates										
Circulating		Mixing		Displacement		Avg. Job				
Cement Left In Pipe	Amount	18 ft	Reason	Shoe Joint						
Frac Ring # 1 @	ID		Frac ring # 2 @	ID		Frac Ring # 3 @	ID		Frac Ring # 4 @	ID
The Information Stated Herein Is Correct				Customer Representative Signature						