

**SYNERGY RESOURCES CORPORATION  
20203 HIGHWAY 60  
PLATTEVILLE, Colorado**

Avex 42-10 D

Ensign 136

## **Post Job Summary** **Cement Surface Casing**

Date Prepared: 09/19/2012  
Version: 1

Service Supervisor: VIGIL, NICHOLAS

Submitted by: PLIENESS, RYAN

**HALLIBURTON**

# HALLIBURTON

## Wellbore Geometry

Job Tubulars					MD		TVD	
Type	Description	Size in	ID in	Wt lbm/ft	Top ft	Bottom ft	Top ft	Bottom ft
Open Hole Section	Open Hole		12.250		0.00	650.00	0.00	650.00
Casing	Surface Casing	8.63	8.097	24.00	0.00	650.00	0.00	650.00

## Pumping Schedule

Stage /Plug #	Fluid #	Fluid Type	Fluid Name	Surface Density lbm/gal	Surface Volume	Downhole Volume
1	1	Spacer	Fresh Water Spacer	8.33	40 bbl	40 bbl
1	2	Cement Slurry	SwiftCem B2	13.40	175.0 sacks	175.0 sacks

## Fluids Pumped

**Stage/Plug # 1      Fluid 1:**      Fresh Water Spacer  
DUMMY MUD / FLUSH / SPACER SBC MATERIAL

Fluid Density:    8.33 lbm/gal

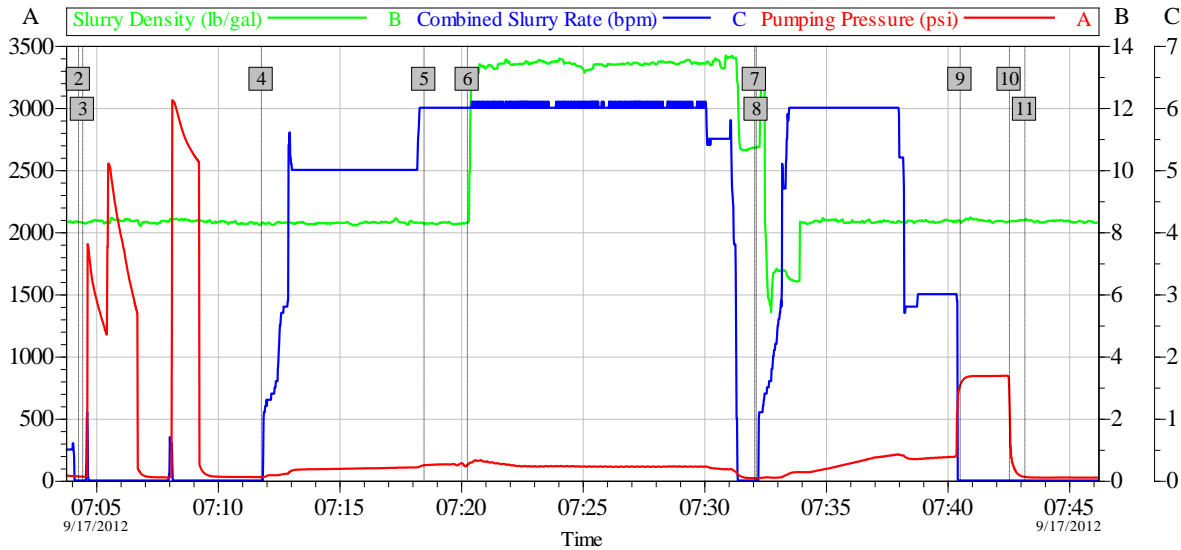
**Stage/Plug # 1      Fluid 2:**      SwiftCem B2  
SWIFTCEM (TM) SYSTEM

Fluid Weight:    13.40 lbm/gal  
Slurry Yield:     1.84 ft3/sack  
Total Mixing Fluid: 9.73 Gal  
Surface Volume:   175.0 sacks  
Sacks:            175.0 sacks  
Calculated Fill:   650.00 ft

# HALLIBURTON

## Data Acquisition

### Synergy Avex 42-10D Surface



#### Global Event Log

2 Start Job	07:04:17	3 Test Lines	07:04:27	4 30 bbl Water	07:11:48
5 10 bbl Dye Water	07:18:29	6 13.4 ppg SwiftCem	07:20:16	7 Drop Top Plug	07:32:05
8 Pump Displacement	07:32:09	9 Bump Plug	07:40:32	10 Check Floats	07:42:33
11 End Job	07:43:11				

Customer:	Job Date: 17-Sep-2012	Sales Order #: 9822734
Well Description:	UWI:	

OptiCem v6.4.10  
19-Dec-12 17:00

# HALLIBURTON

## Service Supervisor Reports

### Job Log

Date/Time	Chart #	Activity Code	Pump Rate	Cum Vol	Pump		Pressure (psig)	Comments
09/17/2012 04:25		Arrive At Loc						HAZARD HUNT, WATER TEST, PRE RIG UP SAFETY MEETING, WATED FOR RIG TO FINISH RUNNING CASING
09/17/2012 07:04		Start Job						PRE JOB SAFETY MEETING
09/17/2012 07:04		Test Lines						PRESSURE TESTED LINES TO 2500 PSI
09/17/2012 07:11		Pump Spacer 1	5	30			109.0	RIG WATER
09/17/2012 07:18		Pump Spacer 2	6	10			108.0	DYE WATER
09/17/2012 07:20		Pump Cement	6	57.3			117.0	13.4 PPG SWIFTCEM (175 SKS)
09/17/2012 07:32		Drop Top Plug						PLUG WAS PRE LOADED
09/17/2012 07:32		Pump Displacement	6	36.5			155.0	RIG WATER
09/17/2012 07:40		Bump Plug	3				191.0	CALCULATED PRESSURE TO LAND WAS 152 PSI/+ 500 OVER
09/17/2012 07:42		Check Floats						FLOATS HELD
09/17/2012 07:43		End Job						

## The Road to Excellence Starts with Safety

<b>Sold To #:</b> 359915		<b>Ship To #:</b> 2951866		<b>Quote #:</b>		<b>Sales Order #:</b> 9822734	
<b>Customer:</b> SYNERGY RESOURCES CORPORATION				<b>Customer Rep:</b> Weitzel, Charlie			
<b>Well Name:</b> Avex			<b>Well #:</b> 42-10 D			<b>API/UWI #:</b> 05-123-34998-00	
<b>Field:</b> WATTENBERG		<b>City (SAP):</b> JOHNSTOWN		<b>County/Parish:</b> Weld			<b>State:</b> Colorado
<b>Contractor:</b> Ensign			<b>Rig/Platform Name/Num:</b> 136				
<b>Job Purpose:</b> Cement Surface Casing							
<b>Well Type:</b> Development Well			<b>Job Type:</b> Cement Surface Casing				
<b>Sales Person:</b> AARON, WESLEY			<b>Srvc Supervisor:</b> VIGIL, NICHOLAS			<b>MBU ID Emp #:</b> 443481	

## Job Personnel

HES Emp Name	Exp Hrs	Emp #	HES Emp Name	Exp Hrs	Emp #	HES Emp Name	Exp Hrs	Emp #
BELL, ROBERT Preston	0.0	437060	MILLER, GEOFFREY Alan	0.0	460232	VIGIL, NICHOLAS Joseph	0.0	443481

## Equipment

HES Unit #	Distance-1 way	HES Unit #	Distance-1 way	HES Unit #	Distance-1 way	HES Unit #	Distance-1 way
10829456	31 mile	10988836C	31 mile	11527037	31 mile	11667703C	31 mile

## Job Hours

Date	On Location Hours	Operating Hours	Date	On Location Hours	Operating Hours	Date	On Location Hours	Operating Hours
TOTAL	Total is the sum of each column separately							

## Job

Formation Name	Top	Bottom	Called Out	Date	Time	Time Zone
Formation Depth (MD)			On Location	17 - Sep - 2012	01:30	MST
Form Type		BHST	Job Started	17 - Sep - 2012	04:25	MST
Job depth MD	650. ft	Job Depth TVD	Job Completed	17 - Sep - 2012	00:00	MST
Water Depth		Wk Ht Above Floor	Departed Loc	17 - Sep - 2012	00:00	MST
Perforation Depth (MD)	From	To				

## Well Data

Description	New / Used	Max pressure psig	Size in	ID in	Weight lbm/ft	Thread	Grade	Top MD ft	Bottom MD ft	Top TVD ft	Bottom TVD ft
Open Hole				12.25				.	650.	.	650.
Surface Casing	Mixed		8.625	8.097	24.			.	650.	.	650.

## Tools and Accessories

Type	Size	Qty	Make	Depth	Type	Size	Qty	Make	Depth	Type	Size	Qty	Make
Guide Shoe					Packer					Top Plug			
Float Shoe					Bridge Plug					Bottom Plug			
Float Collar					Retainer					SSR plug set			
Insert Float										Plug Container			
Stage Tool										Centralizers			

## Miscellaneous Materials

Gelling Agt	Conc	Surfactant	Conc	Acid Type	Qty	Conc	%
Treatment Fld	Conc	Inhibitor	Conc	Sand Type	Size		Qty

## Fluid Data

Stage/Plug #: 1

Summit  
Version:Wednesday, December 19, 2012  
17:10:00

Fluid #	Stage Type	Fluid Name	Qty	Qty uom	Mixing Density lbm/gal	Yield ft <sup>3</sup> /sk	Mix Fluid Gal/sk	Rate bbl/min	Total Mix Fluid Gal/sk
1	Fresh Water Spacer			bbl	8.33	.0	.0	.0	
2	SwiftCem B2	SWIFTCM (TM) SYSTEM (452990)	175.0	sacks	13.4	1.84	9.73		9.73
9.73 Gal		FRESH WATER							
<b>Calculated Values</b>		<b>Pressures</b>		<b>Volumes</b>					
Displacement		Shut In: Instant		Lost Returns		Cement Slurry		Pad	
Top Of Cement		5 Min		Cement Returns		Actual Displacement		Treatment	
Frac Gradient		15 Min		Spacers		Load and Breakdown		Total Job	
<b>Rates</b>									
Circulating		Mixing		Displacement		Avg. Job			
Cement Left In Pipe		Amount	0 ft	Reason	Shoe Joint				
Frac Ring # 1 @	ID	Frac ring # 2 @	ID	Frac Ring # 3 @	ID	Frac Ring # 4 @	ID		
The Information Stated Herein Is Correct				Customer Representative Signature					

