

**SYNERGY RESOURCES CORPORATION
20203 HIGHWAY 60
PLATTEVILLE, Colorado**

Avex
Avex 41-10D

Ensign/136

Post Job Summary **Cement Production Casing**

Date Prepared: 10/01/2012
Version: 1

Service Supervisor: OZBUN, RYAN

Submitted by: MCKAY, ADAM

HALLIBURTON

HALLIBURTON

Wellbore Geometry

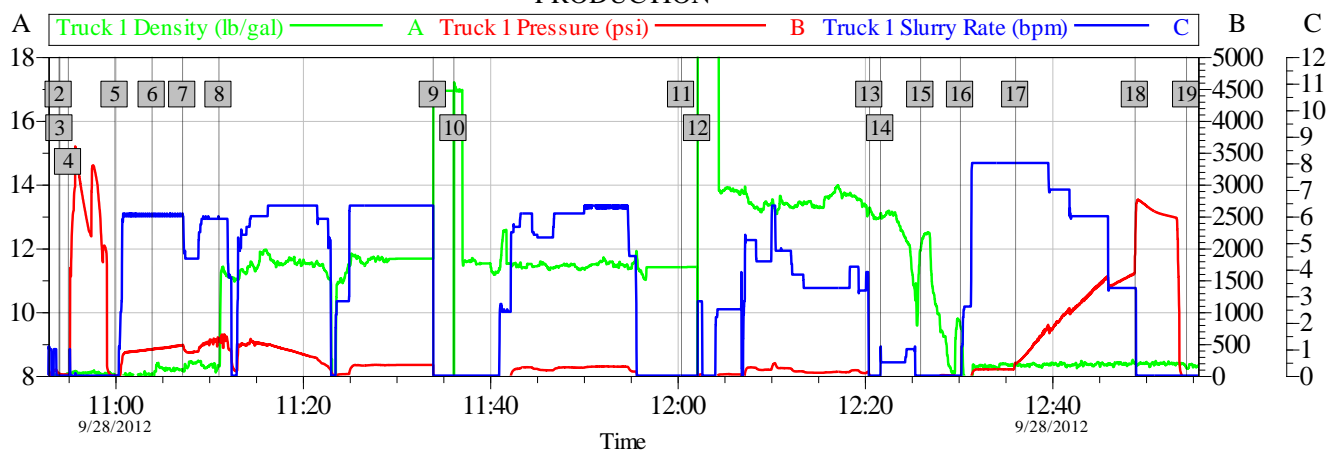
Job Tubulars					MD		Excess %	Shoe Joint Length ft
Type	Description	Size in	ID in	Wt lbm/ft	Top ft	Bottom ft		
Casing	Production Casing	4.50	4.000	11.60	0.00	7,795.00		18.00
Open Hole Section	Open Hole		7.875		614.00	7,833.00		
Casing	Surface Casing	8.63	8.097	24.00	0.00	614.00		

Pumping Schedule

Stage /Plug #	Fluid #	Fluid Type	Fluid Name	Surface Density lbm/gal	Avg Rate bbl/min	Surface Volume	Downhole Volume
1	1	Spacer	MUD FLUSH III	8.40	6.00	24.0 bbl	24.0 bbl
1	2	Cement Slurry	EXTENDACEM B1	11.50	6.00	480.0 sacks	480.0 sacks
1	3	Cement Slurry	FracCem B2	13.50	6.00	255.0 sacks	255.0 sacks

Data Acquisition

SYNERGY AVEX 41-10D PRODUCTION



Global Event Log									
Intersection		T1D	T1P	T1SR	Intersection		T1D	T1P	T1SR
2 Start Job	10:54:01	8.042	33.42	0.000	3 Start Job	10:54:06	8.030	27.26	0.000
4 Test Lines	10:55:01	8.045	19.00	0.000	5 Pump Spacer 1	10:59:59	8.032	1.000	0.000
6 Pump Spacer 2	11:03:57	8.070	412.3	6.000	7 Pump Spacer 1	11:07:12	8.152	475.7	6.100
8 Pump Lead Cement	11:11:05	8.307	552.4	5.900	9 Start Job	11:33:57	12.31	146.5	5.637
10 Start Job	11:36:10	9.649	-18.80	0.000	11 Pump Tail Cement	12:00:27	11.40	-34.00	0.000
12 Start Job	12:02:10	4.617	-12.08	0.000	13 Shutdown	12:20:32	13.26	9.768	0.000
14 Clean Lines	12:21:42	13.09	-31.78	0.299	15 Drop Top Plug	12:25:59	11.93	-4.000	0.000
16 Pump Displacement	12:30:14	9.550	-28.00	0.000	17 Displ Reached Cmmt	12:36:07	8.340	197.4	8.000
18 Bump Plug	12:48:53	8.392	1915	3.300	19 End Job	12:54:22	8.226	-31.00	0.000

OptiCem v6.4.10
28-Sep-12 13:08

Service Supervisor Reports

Job Log

Date/Time	Chart #	Activity Code	Pump Rate	Cum Vol	Pump	Pressure (psig)	Comments
09/28/2012 10:54		Start Job					PERFORM WATER TEST ALL RESULTS NORMAL
09/28/2012 10:55		Test Lines					TEST LINES TO 3500 PSI ALL CHECKED OUT GOOD
09/28/2012 11:00		Pump Spacer 1	6	20		390.0	PUMP 20 BBL CLAY WEB WATER
09/28/2012 11:03		Pump Spacer 2	6	24		390.0	PUMP 24 BBL MUD FLUSH
09/28/2012 11:07		Pump Spacer 1	6	20		400.0	PUMP 20 BBL CLAY WEB WATER
09/28/2012 11:11		Pump Lead Cement	6	196.6			PUMP 480 SKS 11.5 PPG EXTENDACEM MIXED ON THE FLY WITH TESTED WATER (FLECS SCREAM KEPT FREEZING AND HAD TO REBOOT SYSTEM 2 TIMES DENSITY LOOKS ERATIC ON CHART DUE TO THIS SCALED CEMENT THE WHOLE JOB HAD TO HAND MIX AS WELL)
09/28/2012 12:00		Pump Tail Cement	6	79			PUMP 255 SKS 13.5 PPG FRACCEM MIXED ON THE FLY WITH TESTED WATER
09/28/2012 12:20		Shutdown					SHUTDOWN
09/28/2012 12:21		Clean Lines					WASH PUMPS AND LINES
09/28/2012 12:25		Drop Top Plug					BROKE OFF CAP DROPPED LATCH DOWN PLUG PLUG DEPLOYED AND TRIGGERED TATTLE TAIL
09/28/2012 12:30		Pump Displacement	8	115.5		1500.0	PUMP 115.5 BBL FRESH WATER WITH CLAY WEB
09/28/2012 12:36		Displ Reached Cmmt					CAUGHT CEMENT AT 39 BBL AWAY
09/28/2012 12:48		Bump Plug					BUMP PLUG AT 115.5 BBL AWAY AND 1500 PSI PRESSURED UP TO 2700 PSI HAD LEAK ON FACE SEAL ON QUICK LATCH PRESSURE BLEED OFF THROUGH THAT
09/28/2012 12:54		Check Floats					CHECK FLOATS FLOATS HELD
09/28/2012 12:55		End Job					END JOB

HALLIBURTON

The Road to Excellence Starts with Safety

Sold To #: 359915		Ship To #: 2953220		Quote #:		Sales Order #: 9844838	
Customer: SYNERGY RESOURCES CORPORATION				Customer Rep: Weitzel, Craig			
Well Name: Avex			Well #: 41-10D			API/UWI #:	
Field: WATTENBERG		City (SAP): JOHNSTOWN		County/Parish: Weld		State: Colorado	
Contractor: Ensign			Rig/Platform Name/Num: 136				
Job Purpose: Cement Production Casing							
Well Type: Development Well			Job Type: Cement Production Casing				
Sales Person: AARON, WESLEY			Srvc Supervisor: OZBUN, RYAN			MBU ID Emp #: 475709	

Job Personnel

HES Emp Name	Exp Hrs	Emp #	HES Emp Name	Exp Hrs	Emp #	HES Emp Name	Exp Hrs	Emp #
BARNES, BRIAN L	0.0	485204	DIRKS, RICHARD E	0.0	485940	IPSON, TIMOTHY J	0.0	485018
OZBUN, RYAN Jacob	0.0	475709	SMITH, AARON David	0.0	518187			

Equipment

HES Unit #	Distance-1 way	HES Unit #	Distance-1 way	HES Unit #	Distance-1 way	HES Unit #	Distance-1 way
10248053C	30 mile	10972458	30 mile	11019275	30 mile	11360865C	30 mile
11398490	30 mile	11527037	30 mile	11605597	30 mile		

Job Hours

Date	On Location Hours	Operating Hours	Date	On Location Hours	Operating Hours	Date	On Location Hours	Operating Hours

TOTAL Total is the sum of each column separately

Job

Formation Name	Top	Bottom	Called Out	Date	Time	Time Zone
Formation Depth (MD)			On Location	28 - Sep - 2012	08:00	MST
Form Type	BHST		Job Started	28 - Sep - 2012	10:50	MST
Job depth MD	7852. ft	Job Depth TVD	7852. ft	Job Completed	28 - Sep - 2012	12:50
Water Depth		Wk Ht Above Floor	3. ft	Departed Loc	28 - Sep - 2012	14:30
Perforation Depth (MD)	From	To				

Well Data

Description	New / Used	Max pressure psig	Size in	ID in	Weight lbm/ft	Thread	Grade	Top MD ft	Bottom MD ft	Top TVD ft	Bottom TVD ft
Open Hole				7.875				614.	7833.	.	.
Production Casing	Unknown		4.5	4.	11.6			.	7795.	.	.
Surface Casing	Unknown		8.625	8.097	24.			.	614.	.	.

Tools and Accessories

Type	Size	Qty	Make	Depth	Type	Size	Qty	Make	Depth	Type	Size	Qty	Make
Guide Shoe					Packer					Top Plug			
Float Shoe					Bridge Plug					Bottom Plug			
Float Collar					Retainer					SSR plug set			
Insert Float										Plug Container			
Stage Tool										Centralizers			

Miscellaneous Materials

Gelling Agt		Conc		Surfactant		Conc		Acid Type		Qty		Conc	%
Treatment Fld		Conc		Inhibitor		Conc		Sand Type		Size		Qty	

Fluid Data

Stage/Plug #: 1

HALLIBURTON

Fluid #	Stage Type	Fluid Name	Qty	Qty uom	Mixing Density lbm/gal	Yield ft ³ /sk	Mix Fluid Gal/sk	Rate bbl/min	Total Mix Fluid Gal/sk
1	MUD FLUSH III	MUD FLUSH III - SBM (528788)	24.00	bbl	8.4	.0	.0	.0	
2	EXTENDACEM B1	EXTENDACEM (TM) SYSTEM (452981)	480.0	sacks	11.5	2.3	12.95		12.95
0.2 %		SUPER CBL, 50 LB PAIL (100003668)							
12.95 Gal		FRESH WATER							
3	FracCem B2	FRACCEM (TM) SYSTEM (452963)	255.0	sacks	13.5	1.74	8.29		8.29
8.289 Gal		FRESH WATER							
Calculated Values		Pressures		Volumes					
Displacement		Shut In: Instant		Lost Returns		Cement Slurry		Pad	
Top Of Cement		5 Min		Cement Returns		Actual Displacement		Treatment	
Frac Gradient		15 Min		Spacers		Load and Breakdown		Total Job	
Rates									
Circulating		Mixing		Displacement		Avg. Job			
Cement Left In Pipe		Amount	18 ft	Reason	Shoe Joint				
Frac Ring # 1 @	ID	Frac ring # 2 @	ID	Frac Ring # 3 @	ID	Frac Ring # 4 @	ID		
The Information Stated Herein Is Correct				Customer Representative Signature					