

**SYNERGY RESOURCES CORPORATION
20203 HIGHWAY 60
PLATTEVILLE, Colorado**

Avex
Avex 10ND

Ensign/136

Post Job Summary **Cement Production Casing**

Date Prepared: 11/02/2012
Version: 1

Service Supervisor: SNYDER, JONATHAN

Submitted by: MCKAY, ADAM

HALLIBURTON

HALLIBURTON

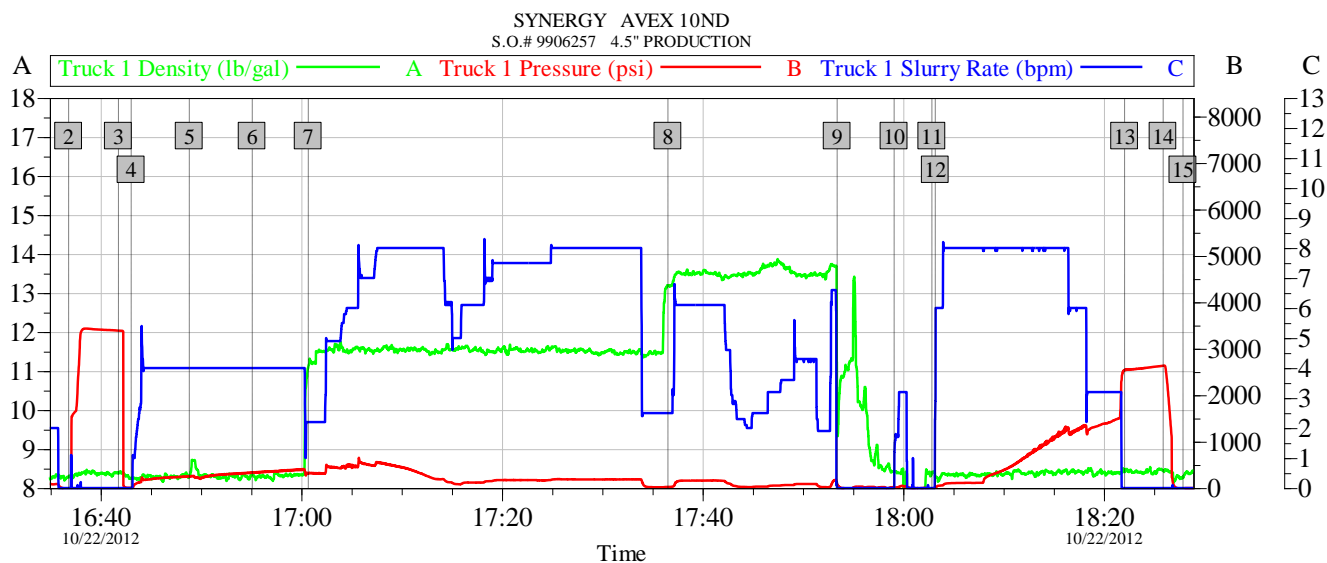
Wellbore Geometry

Job Tubulars					MD		Shoe Joint Length ft
Type	Description	Size in	ID in	Wt lbm/ft	Top ft	Bottom ft	
Casing	Production Casing	4.50	4.000	11.60	0.00	7,834.00	15.00
Open Hole Section	Open Hole		7.875		600.00	7,840.00	
Casing	Surface Casing	8.63	8.097	24.00	0.00	600.00	

Pumping Schedule

Stage /Plug #	Fluid #	Fluid Type	Fluid Name	Surface Density lbm/gal	Avg Rate bbl/min	Surface Volume	Downhole Volume
1	1	Spacer	MUD FLUSH III	8.40	4.00	24.0 bbl	24.0 bbl
1	2	Cement Slurry	EXTENDACEM B1	11.50	8.00	570.0 sacks	570.0 sacks
1	3	Cement Slurry	FracCem B2	13.50	5.00	225.0 sacks	225.0 sacks

Data Acquisition



Global Event Log					
Intersection	TID	TIP	Intersection	TID	TIP
1 Starting Job	15:42:14	-0.160 16.00	2 Start Job	16:36:48	8.284 -1.000
3 Test Lines	16:41:46	8.370 3391	4 Pump Water Spacer	16:43:02	8.263 8.000
5 Pump Mud Flush III Spacer	16:48:50	8.282 249.6	6 Pump Water Spacer	16:55:06	8.350 335.4
7 Pump Lead Cement @ 11.5#	17:00:42	11.11 317.3	8 Pump Tail Cement 13.5#	17:36:33	13.20 26.00
9 Shutdown	17:53:25	9.580 81.76	10 Clean Lines	17:59:05	8.410 16.00
11 Drop Top Plug	18:02:51	8.392 -4.000	12 Pump Displacement	18:03:12	8.270 12.58
13 Bump Plug	18:22:04	8.420 2547	14 Check Floats	18:25:54	8.444 2634
15 End Job	18:27:53	8.286 -1.544	16 Ending Job	18:35:09	8.410 1.000

Customer: SYNERGY
Well Description: 4.5" PRODUCTION
SERVICE SUPERVISOR JONATHAN SNYDER

Job Date: 22-Oct-2012
UWI: 05-123-36163
SERVICE OPERATOR JAMES WILEY

Sales Order #: 9906257

OptiCem v6.4.10
22-Oct-12 18:37

Service Supervisor Reports

Job Log

Date/Time	Chart #	Activity Code	Pump Rate	Cum Vol	Pump		Pressure (psig)		Comments
10/22/2012 13:30		Arrive at Location from Service Center							ARRIVED AND CONDUCTED A HAZARD HUNT AND FOUND NO HAZARDS THAT CONFLICT WITH US RIGGING UP EQUIPMENT.
10/22/2012 16:00		Pre-Job Safety Meeting							HELD SAFETY MEETING WITH ALL EMPLOYEES AND ALL THIRD PARTY PERSONEL PRIOR TO PUMPING THE CEMENT JOB.
10/22/2012 16:36		Start Job							
10/22/2012 16:41		Test Lines							PRESSURE TEST LINES TO 3391 PSI
10/22/2012 16:43		Pump Spacer 1	4	20				268.0	RIG WATER MIXED W/ CLAYWEB III
10/22/2012 16:48		Pump Spacer 2	4	24				306.0	RIG WATER MIXED W/ MUD FLUSH III
10/22/2012 16:55		Pump Spacer 1	4	20				362.0	RIG WATER MIXED W/ CLAYWEB III
10/22/2012 17:00		Pump Lead Cement	8	233				175.0	570 SKS EXTENDACEM B1 MIXED @ 11.5 PPG W/ RIG WATER
10/22/2012 17:36		Pump Tail Cement	8	69				85.0	225 SKS FRACCEM B2 MIXED @ 13.5 PPG W/ RIG WATER
10/22/2012 17:53		Shutdown							
10/22/2012 17:59		Clean Lines							
10/22/2012 18:02		Drop Top Plug							DROPPED PLUG WHILE OPERATOR WAS WASHING PUMPS AND LINES
10/22/2012 18:03		Pump Displacement	8	121.2				942.0	RIG WATER MIXED W/ CLAYWEB III
10/22/2012 18:22		Bump Plug	24					1524.0	WE GOT WATER SPACER BACK WITH 98 BBLS OF DISPLACEMENT GONE AND WE GOT 3 BBLS OF MUDFLUSH BACK INTO THE PITS.
10/22/2012 18:25		Check Floats						2682.0	FLOATS HELD, GOOD RETURNS THROUGHOUT THE JOB, WE GOT 1 BBL OF WATER BACK IN THE DISPLACEMENT TANKS WHEN WE CHECKED FLOATS.
10/22/2012 18:27		End Job							
10/22/2012 18:35		Pre-Rig Down Safety Meeting							HELD SAFETY MEETING WITH ALL EMPLOYEES PRIOR TO RIGGING DOWN AND DISCUSSED ALL HAZARDS WHILE RIGGING DOWN EQUIPMENT.
10/22/2012 19:30		Depart Location for Service Center or Other Site							HELD SAFETY MEETING PRIOR TO LEAVING LOCATION AND DISCUSSED ALL POTENTIAL HAZARDS WHILE DRIVING BACK TO THE SERVICE CENTER.

HALLIBURTON

The Road to Excellence Starts with Safety

Sold To #: 359915		Ship To #: 2957396		Quote #:		Sales Order #: 9906257	
Customer: SYNERGY RESOURCES CORPORATION				Customer Rep: Montoya, Chris			
Well Name: Avex			Well #: 10ND			API/UWI #: 05-123-36163	
Field: WATTENBERG		City (SAP): JOHNSTOWN		County/Parish: Weld		State: Colorado	
Contractor: Ensign			Rig/Platform Name/Num: 136				
Job Purpose: Cement Production Casing							
Well Type: Development Well			Job Type: Cement Production Casing				
Sales Person: AARON, WESLEY			Srvc Supervisor: SNYDER, JONATHAN			MBU ID Emp #: 435616	

Job Personnel

HES Emp Name	Exp Hrs	Emp #	HES Emp Name	Exp Hrs	Emp #	HES Emp Name	Exp Hrs	Emp #
DODSON, RICHARD Bryan	6.0	518192	HETZLER, JEFFREY Charles	6.0	527677	JEWELL, WILLIAM Uris	6.0	503358
MULLER, MICHEL B	6.0	529830	SINCLAIR, RICHARD	6.0	368195	SNYDER, JONATHAN Leroy	6.0	435616
WILEY, JAMES A	6.0	440080						

Equipment

HES Unit #	Distance-1 way	HES Unit #	Distance-1 way	HES Unit #	Distance-1 way	HES Unit #	Distance-1 way
10246780C	30 mile	10248053C	30 mile	10988836C	30 mile	11362287C	30 mile
11518548	30 mile	11633846C	30 mile	11645065	30 mile		

Job Hours

Date	On Location Hours	Operating Hours	Date	On Location Hours	Operating Hours	Date	On Location Hours	Operating Hours
TOTAL			<i>Total is the sum of each column separately</i>					

Job

Formation Name					Job Times			
Formation Depth (MD)	Top	Bottom			Called Out	Date	Time	Time Zone
Form Type			BHST		On Location	22 - Oct - 2012	13:30	MST
Job depth MD	7834. ft		Job Depth TVD	8156. ft	Job Started	22 - Oct - 2012	16:36	MST
Water Depth			Wk Ht Above Floor	4. ft	Job Completed	22 - Oct - 2012	18:27	MST
Perforation Depth (MD)	From	To			Departed Loc	22 - Oct - 2012	19:30	MST

Well Data

Description	New / Used	Max pressure psig	Size in	ID in	Weight lbm/ft	Thread	Grade	Top MD ft	Bottom MD ft	Top TVD ft	Bottom TVD ft
Open Hole				7.875				600.	7840.	.	.
Production Casing	Unknown		4.5	4.	11.6			.	7834.	.	.
Surface Casing	Unknown		8.625	8.097	24.			.	600.	.	.

Tools and Accessories

Type	Size	Qty	Make	Depth	Type	Size	Qty	Make	Depth	Type	Size	Qty	Make
Guide Shoe					Packer					Top Plug			
Float Shoe					Bridge Plug					Bottom Plug			
Float Collar					Retainer					SSR plug set			
Insert Float										Plug Container			
Stage Tool										Centralizers			

Miscellaneous Materials

Gelling Agt	Conc	Surfactant	Conc	Acid Type	Qty	Conc	%
Treatment Fld	Conc	Inhibitor	Conc	Sand Type	Size		Qty

HALLIBURTON

Fluid Data										
Stage/Plug #: 1										
Fluid #	Stage Type	Fluid Name	Qty	Qty uom	Mixing Density lbm/gal	Yield ft ³ /sk	Mix Fluid Gal/sk	Rate bbl/min	Total Mix Fluid Gal/sk	
1	MUD FLUSH III	MUD FLUSH III - SBM (528788)	24.00	bbl	8.4	.0	.0	.0		
2	EXTENDACEM B1	EXTENDACEM (TM) SYSTEM (452981)	570.0	sacks	11.5	2.3	12.93		12.93	
12.93 Gal		FRESH WATER								
3	FracCem B2	FRACCEN (TM) SYSTEM (452963)	225.0	sacks	13.5	1.74	8.29		8.29	
8.289 Gal		FRESH WATER								
Calculated Values		Pressures		Volumes						
Displacement		Shut In: Instant		Lost Returns		Cement Slurry		Pad		
Top Of Cement		5 Min		Cement Returns		Actual Displacement		Treatment		
Frac Gradient		15 Min		Spacers		Load and Breakdown		Total Job		
Rates										
Circulating		Mixing		Displacement		Avg. Job				
Cement Left In Pipe		Amount	15 ft	Reason	Shoe Joint					
Frac Ring # 1 @	ID	Frac ring # 2 @	ID	Frac Ring # 3 @	ID	Frac Ring # 4 @	ID			
The Information Stated Herein Is Correct				Customer Representative Signature						