

**SYNERGY RESOURCES CORPORATION
20203 HIGHWAY 60
PLATTEVILLE, Colorado**

Avex
Avex 10C

Ensign/136

Post Job Summary **Cement Surface Casing**

Date Prepared: 10/16/2012
Version: 1

Service Supervisor: WHEELER, JUSTIN

Submitted by: MCKAY, ADAM

HALLIBURTON

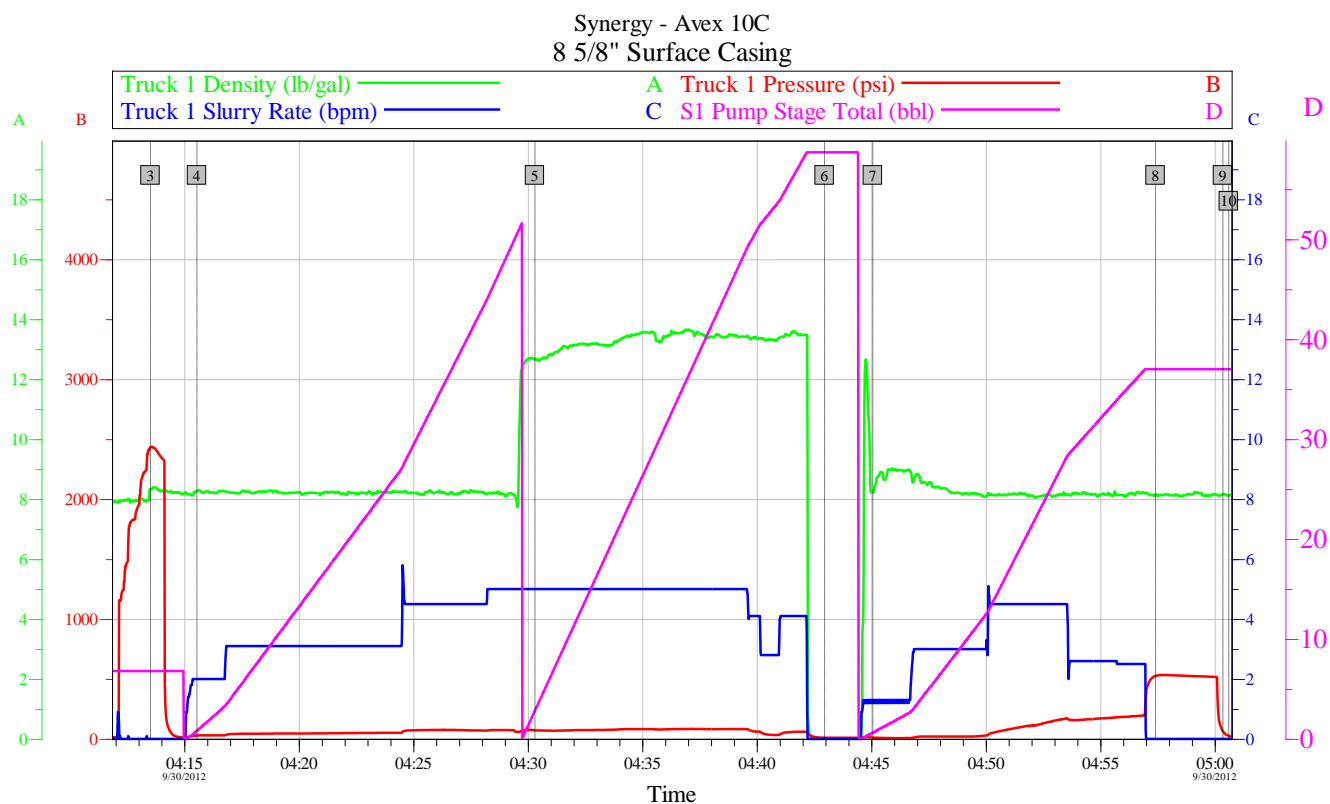
Wellbore Geometry

Job Tubulars					MD		TVD		Excess %	Shoe Joint Length ft
Type	Description	Size in	ID in	Wt lbm/ft	Top ft	Bottom ft	Top ft	Bottom ft		
Open Hole Section	Open Hole		12.250		0.00	605.00	0.00	605.00		
Casing	Surface Casing	8.63	8.097	24.00	0.00	605.00	0.00	605.00		

Pumping Schedule

Stage /Plug #	Fluid #	Fluid Type	Fluid Name	Surface Density lbm/gal	Avg Rate bbl/min	Surface Volume	Downhole Volume
1	1	Spacer	Fresh Water Spacer	8.33	3.00	50.0 bbl	50.0 bbl
1	2	Cement Slurry	SwiftCem B2	13.40	4.00	175.0 sacks	175.0 sacks

Data Acquisition



Customer: Synergy
Well Description: Avex 10C

Job Date: 30-Sep-2012
UWI:

Sales Order #: 9856274

OptiCem v6.4.9
30-Sep-12 05:42

Service Supervisor Reports

Job Log

Date/Time	Chart #	Activity Code	Pump Rate	Cum Vol	Pump		Pressure (psig)	Comments
09/30/2012 02:00		Depart from Service Center or Other Site						
09/30/2012 03:00		Arrive At Loc						
09/30/2012 03:15		Safety Meeting - Pre Rig-Up						Water Provided By Rig, Tested Ok For Mixing Cement (Top Plug Pre-Loaded In Plug Container)
09/30/2012 04:13		Test Lines						Pressure Test Lines to 2500 PSI
09/30/2012 04:15		Pump Spacer	2	50			30.0	Pump 40 bbls Fresh Water, 10 bbls Dyed Water Spacer (Used 1, 2 lb Bottle of Red Dye)
09/30/2012 04:30		Pump Cement	5	57.3			75.0	Mix and Pump 175 sks SwiftCem Cement @ 13.4 lb/gal (Density Verified By Pressurized Scales)
09/30/2012 04:42		Drop Top Plug						Shut-Down, Drop Top Plug
09/30/2012 04:45		Pump Displacement - Start	1	0			10.0	Pump Fresh Water Displacement (Wash-Up on Top of Plug)
09/30/2012 04:49		Spacer Returns to Surface	4	16			80.0	Dyed Water Returns to Surface
09/30/2012 04:52		Cement Returns to Surface	3	26			165.0	9 bbls Cement To Surface
09/30/2012 04:57		Pump Displacement - End	2.5	35.7			195.0	Good Returns Throughout Job
09/30/2012 04:57		Bump Plug	2.5	35.7			525.0	Bump Plug to 500 PSI
09/30/2012 05:00		Check Floats						Check Floats, Floats Holding, Returned 1 bbl Back to Tanks
09/30/2012 05:30		Safety Meeting - Pre Rig-Down						
09/30/2012 06:00		Safety Meeting - Departing Location						Wet and Dry Samples of Cement Left on Location

HALLIBURTON

The Road to Excellence Starts with Safety

Sold To #: 359915		Ship To #: 2953532		Quote #:		Sales Order #: 9856274	
Customer: SYNERGY RESOURCES CORPORATION				Customer Rep: PATTON, DON			
Well Name: Avex			Well #: 10C			API/UWI #: 05-123-35009	
Field: Wattenberg		City (SAP): JOHNSTOWN		County/Parish: Weld		State: Colorado	
Contractor: Ensign			Rig/Platform Name/Num: 136				
Job Purpose: Cement Surface Casing							
Well Type: Development Well			Job Type: Cement Surface Casing				
Sales Person: AARON, WESLEY			Srvc Supervisor: WHEELER, JUSTIN			MBU ID Emp #: 196470	

Job Personnel

HES Emp Name	Exp Hrs	Emp #	HES Emp Name	Exp Hrs	Emp #	HES Emp Name	Exp Hrs	Emp #
HOLMES, ANDREW Malcom	0.0	520802	IPSON, TIMOTHY J	0.0	485018	WHEELER, JUSTIN W	0.0	196470

Equipment

HES Unit #	Distance-1 way	HES Unit #	Distance-1 way	HES Unit #	Distance-1 way	HES Unit #	Distance-1 way
11036298	30 mile	11605599	30 mile	11812069C	30 mile		

Job Hours

Date	On Location Hours	Operating Hours	Date	On Location Hours	Operating Hours	Date	On Location Hours	Operating Hours
TOTAL			<i>Total is the sum of each column separately</i>					

Job

Formation Name	Formation Depth (MD)	Top	Bottom	Form Type	Job depth MD	Job Depth TVD	Water Depth	Perforation Depth (MD)	From	To
				BHST	605. ft	605. ft				

Job Times

	Date	Time	Time Zone
Called Out	29 - Sep - 2012	23:30	MST
On Location	30 - Sep - 2012	03:00	MST
Job Started	30 - Sep - 2012	04:12	MST
Job Completed	30 - Sep - 2012	05:00	MST
Departed Loc	30 - Sep - 2012	06:00	MST

Well Data

Description	New / Used	Max pressure psig	Size in	ID in	Weight lbm/ft	Thread	Grade	Top MD ft	Bottom MD ft	Top TVD ft	Bottom TVD ft
Open Hole				12.25				.	605.	.	605.
Surface Casing	Mixed		8.625	8.097	24.			.	605.	.	605.

Tools and Accessories

Type	Size	Qty	Make	Depth	Type	Size	Qty	Make	Depth	Type	Size	Qty	Make
Guide Shoe					Packer					Top Plug			
Float Shoe					Bridge Plug					Bottom Plug			
Float Collar					Retainer					SSR plug set			
Insert Float										Plug Container			
Stage Tool										Centralizers			

Miscellaneous Materials

Gelling Agt	Conc	Surfactant	Conc	Acid Type	Qty	Conc	%
Treatment Fld	Conc	Inhibitor	Conc	Sand Type	Size	Qty	

Fluid Data

Stage/Plug #: 1										
Fluid #	Stage Type	Fluid Name	Qty	Qty uom	Mixing Density lbm/gal	Yield ft ³ /sk	Mix Fluid Gal/sk	Rate bbl/min	Total Mix Fluid Gal/sk	

HALLIBURTON

1	Fresh Water Spacer		50.00	bbl	8.33	.0	.0	.0	
2	SwiftCem B2	SWIFTCM (TM) SYSTEM (452990)	175.0	sacks	13.4	1.84	9.73		9.73
9.73 Gal		FRESH WATER							
Calculated Values		Pressures		Volumes					
Displacement		Shut In: Instant		Lost Returns		Cement Slurry		Pad	
Top Of Cement		5 Min		Cement Returns		Actual Displacement		Treatment	
Frac Gradient		15 Min		Spacers		Load and Breakdown		Total Job	
Rates									
Circulating		Mixing		Displacement		Avg. Job			
Cement Left In Pipe	Amount	0 ft	Reason	Shoe Joint					
Frac Ring # 1 @	ID		Frac ring # 2 @	ID		Frac Ring # 3 @	ID	Frac Ring # 4 @	ID
The Information Stated Herein Is Correct				Customer Representative Signature					