

ENCANA OIL & GAS (USA) INC. - EBUS
DO NOT MAIL-3601 N STAGECOACH RD
LONGMONT, Colorado

Davis 1C-9H

Ensign/124

Post Job Summary

Cement Production Casing

Date Prepared: 05/09/2012
Version: 1

Service Supervisor: SALINAS, JOSE

Submitted by: PLIENESS, RYAN

HALLIBURTON

HALLIBURTON

Wellbore Geometry

Job Tubulars					MD		TVD		Excess	Shoe Joint Length
Type	Description	Size in	ID in	Wt lbm/ft	Top ft	Bottom ft	Top ft	Bottom ft	%	ft
Open Hole Section	Open Hole		8.750		7,866.00	14,464.00	0.00	0.00		
Casing	Intermediate Casing	7.00	6.276	26.00	0.00	7,495.00	0.00			0.00
Casing	4 1/2" Production Casing	4.50	4.026	11.00	0.00	11,365.00	0.00	0.00		

Pumping Schedule

Stage /Plug #	Fluid #	Fluid Type	Fluid Name	Surface Density lbm/gal	Avg Rate bbl/min	Surface Volume	Downhole Volume
1	1	Spacer	TUNED SPACER III	10.00	4.00	40.0 bbl	40.0 bbl
1	2	Cement Slurry	EXPANDACEM B2	13.80	4.00	500.0 sacks	500.0 sacks
1	3	Spacer	BRINE WATER	8.34	0.00	214.0 bbl	214.0 bbl

Fluids Pumped

Stage/Plug # 1 Fluid 1: TUNED SPACER III
TUNED SPACER III - SBM (483826)
30.27 Barite
lbm/bbl

Fluid Density: 10.00 lbm/gal
Fluid Volume: 40.00 bbl
Pump Rate: 4.00 bbl/min

Stage/Plug # 1 Fluid 2: EXPANDACEM B2
EXPANDACEM (TM) SYSTEM

Fluid Weight: 13.80 lbm/gal
Slurry Yield: 1.68 ft³/sack
Total Mixing Fluid: 7.75 Gal
Surface Volume: 500.0 sacks
Sacks: 500.0 sacks
Estimated Top of Fluid:
Pump Rate: 4.00 bbl/min

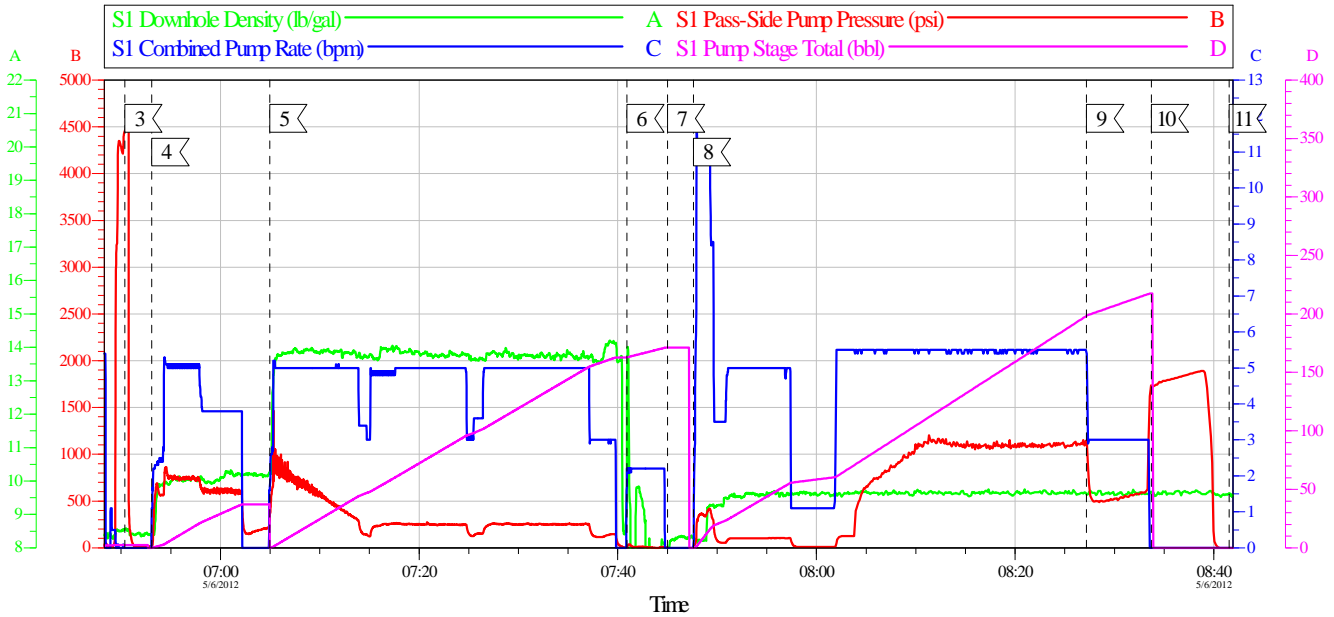
Stage/Plug # 1 Fluid 3: BRINE WATER
DUMMY MUD / FLUSH / SPACER SBC MATERIAL
0.2 gal/Mgal CLA-Web

Fluid Density: 8.34 lbm/gal
Fluid Volume: 214.00 bbl
Pump Rate: 0.00 bbl/min

HALLIBURTON

Data Acquisition

ENCANA OIL & GAS
DAVIS 1C-9H 4.5 PRODUCTION
SO# 9492523



Global Event Log					
Intersection	SPPP	Intersection	SPPP	Intersection	SPPP
3 Test Lines	06:50:23 4459	4 Pump Spacer 1	06:53:06 19.70	5 Pump Cement	07:04:57 312.2
6 Clean Lines	07:40:54 2.290	7 Drop Plug	07:45:00 0.851	8 Pump Displacement	07:47:37 -1.000
9 Slow Rate	08:27:11 1145	10 Bump Plug	08:33:42 1734	11 End Job	08:41:32 -2.000

Customer:	Job Date: 06-May-2012	Sales Order #: 9492523
Well Description:	Job Type:	ADC Used:
Company Rep:	Cement Supervisor:	Elite #:

HALLIBURTON
OptiCemv64.10
06-May-12 08:42

HALLIBURTON

Service Supervisor Reports

Job Log

Date/Time	Chart #	Activity Code	Pump Rate	Cum Vol	Pump	Pressure (psig)	Comments
05/05/2012 13:00		Call Out					
05/05/2012 14:30		Pre-Convoy Safety Meeting					
05/05/2012 15:30		Arrive at Location from Service Center					
05/06/2012 01:00		Pre-Rig Up Safety Meeting					
05/06/2012 01:15		Rig-Up Equipment					
05/06/2012 04:00		Pre-Job Safety Meeting					
05/06/2012 06:50		Test Lines	2	2		4000.0	TEST LINES WITH WATER
05/06/2012 06:53		Pump Spacer	5	40		650.0	PUMP 40 BBLS TUNED SPACER @ 10.0 PPG
05/06/2012 07:04		Pump Lead Cement	5	149.6		704.0	PUMP 500 SKS OF EXPADACEM @ 13.8 PPG (149.6 BBLS)
05/06/2012 07:40		Clean Lines	5	10		89.0	CLEAN PUMPS AND LINES
05/06/2012 07:45		Drop Plug	0	0		.0	DROP LATCH DOWN PLUG
05/06/2012 07:47		Pump Displacement	5			745.0	PUMP DISPLACEMENT FLUID WITH 10.0 PPG BRINE WATER
05/06/2012 08:27		Other	3	200		1100.0	SLOW RATE DOWN TO LAND PLUG
05/06/2012 08:33		Bump Plug	3	208		1727.0	BUMP PLUG WITH 1,000 PSI OVER PUMP PSI
05/06/2012 08:38		Release Casing Pressure	0	0		.0	RELEASE PSI / CHEAK FLOATS / GOT 1 BBL BACK
05/06/2012 08:45		Pre-Rig Down Safety Meeting					
05/06/2012 08:50		Rig-Down Equipment					
05/06/2012 09:50		Depart Location Safety Meeting					
05/06/2012 10:00		Depart Location for Service Center or Other Site					
05/06/2012 10:10		Other					NO SPACER OR CMT BACK TO SURFACE

The Road to Excellence Starts with Safety

Sold To #: 340078		Ship To #: 2920062		Quote #:		Sales Order #: 9492523	
Customer: ENCANA OIL & GAS (USA) INC. - EBUS				Customer Rep:			
Well Name: Davis			Well #: 1C-9H			API/UWI #: 05-123-35366	
Field: Wattenberg		City (SAP): FORT LUPTON		County/Parish: Weld		State: Colorado	
Contractor: Ensign			Rig/Platform Name/Num: 124				
Job Purpose: Cement Production Casing							
Well Type: Development Well			Job Type: Cement Production Casing				
Sales Person: FLING, MATTHEW			Srvc Supervisor: SALINAS, JOSE			MBU ID Emp #: 100319	

Job Personnel

HES Emp Name	Exp Hrs	Emp #	HES Emp Name	Exp Hrs	Emp #	HES Emp Name	Exp Hrs	Emp #
DIRKS, RICHARD E	0.0	485940	HOLMES, ANDREW Malcom	0.0	520802	MARKOVICH, STEVEN Michael	0.0	502964
OTERI, VAUGHN Steeves	0.0	443828	SALINAS, JOSE R	0.0	100319	PLIENESS, RYAN Charles		

Equipment

HES Unit #	Distance-1 way	HES Unit #	Distance-1 way	HES Unit #	Distance-1 way	HES Unit #	Distance-1 way
10679720C	20 mile	10724561	20 mile	11605597	20 mile	11667703C	20 mile
11764054C	20 mile	11764737	20 mile				

Job Hours

Date	On Location Hours	Operating Hours	Date	On Location Hours	Operating Hours	Date	On Location Hours	Operating Hours
TOTAL	Total is the sum of each column separately							

Job

Formation Name					Date	Time	Time Zone
Formation Depth (MD)	Top		Bottom		Called Out	05 - May - 2012	13:00 MST
Form Type	BHST				On Location	05 - May - 2012	16:30 MST
Job depth MD	14464. ft		Job Depth TVD	11365. ft	Job Started	06 - May - 2012	06:50 MST
Water Depth			Wk Ht Above Floor	30. ft	Job Completed	06 - May - 2012	08:41 MST
Perforation Depth (MD)	From		To		Departed Loc	06 - May - 2012	10:00 MST

Well Data

Description	New / Used	Max pressure psig	Size in	ID in	Weight lbm/ft	Thread	Grade	Top MD ft	Bottom MD ft	Top TVD ft	Bottom TVD ft
Open Hole				8.75				7866.	14464.	.	.
Intermediate Casing	Unknown		7.	6.276	26.	Unknown		.	7495.	.	.
4 1/2" Production Casing	Unknown		4.5	4.026	11.			.	11365.	.	.

Tools and Accessories

Type	Size	Qty	Make	Depth	Type	Size	Qty	Make	Depth	Type	Size	Qty	Make
Guide Shoe					Packer					Top Plug			
Float Shoe					Bridge Plug					Bottom Plug			
Float Collar					Retainer					SSR plug set			
Insert Float										Plug Container			
Stage Tool										Centralizers			

Miscellaneous Materials

Summit
Version:

Monday, June 04, 2012 14:35:00

Gelling Agt		Conc		Surfactant		Conc		Acid Type		Qty		Conc	%
Treatment Fld		Conc		Inhibitor		Conc		Sand Type		Size		Qty	
Fluid Data													
Stage/Plug #: 1													
Fluid #	Stage Type	Fluid Name			Qty	Qty uom	Mixing Density lbm/gal	Yield ft3/sk	Mix Fluid Gal/sk	Rate bbl/min	Total Mix Fluid Gal/sk		
1	TUNED SPACER III	TUNED SPACER III - SBM (483826)			40.00	bbl	10.	5.92	39.17	4.0			
	39.07 gal/bbl	FRESH WATER											
	30.27 lbm/bbl	BARITE, 100 LB SK (100003680)											
2	EXPANDACEM B2	EXPANDACEM (TM) SYSTEM (452979)			500.0	sacks	13.8	1.68	7.75	4.0	7.75		
	7.75 Gal	FRESH WATER											
3	BRINE WATER				214.00	bbl	8.34	.0	.0	.0			
	0.2 gal/Mgal	CLA-WEB - TOTE (101985045)											
Calculated Values				Pressures				Volumes					
Displacement		Shut In: Instant		Lost Returns		Cement Slurry		Pad					
Top Of Cement		5 Min		Cement Returns		Actual Displacement		Treatment					
Frac Gradient		15 Min		Spacers		Load and Breakdown		Total Job					
Rates													
Circulating		Mixing		Displacement		Avg. Job							
Cement Left In Pipe	Amount	0 ft	Reason	Shoe Joint									
Frac Ring # 1 @	ID	Frac ring # 2 @	ID	Frac Ring # 3 @	ID	Frac Ring # 4 @	ID						
The Information Stated Herein Is Correct					Customer Representative Signature								

