

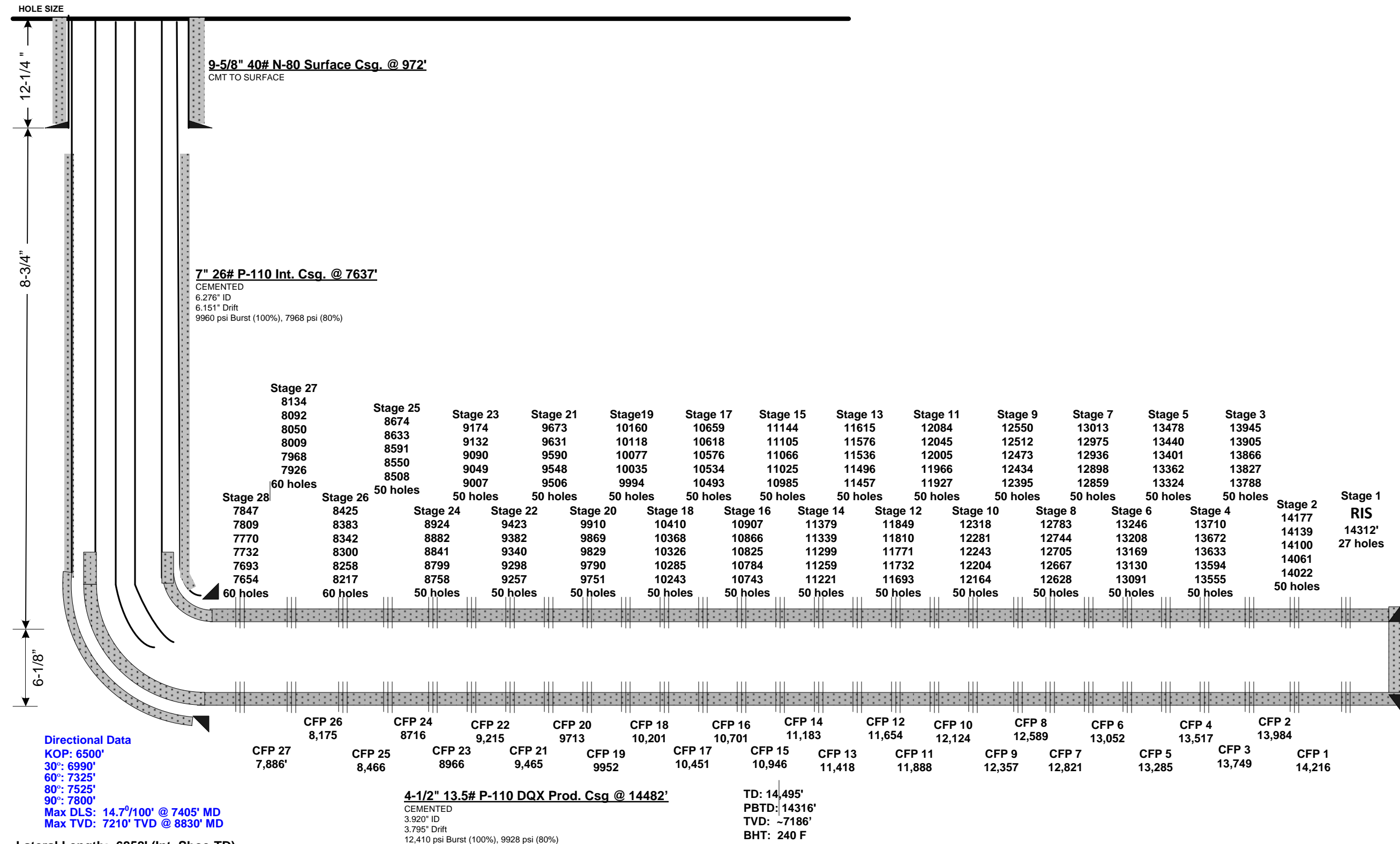
EnCana Oil & Gas (USA) Inc.



WELL : Davis 1C-9H
LOCATION : Lat: 40.153535 Long: -104.778571
COUNTY : WELD STATE: CO
FIELD : Wattenberg - NIOBRARA
ELEVATION : 4915' (GL) 4928' (KB)

SPUD DATE: 4/10/12

API #: 05-123-353660000



Lateral Length: 6858' (Int. Shoe-TD)