

WELL LOCATION PLAT T9N, R61W, 6th P.M.

NOBLE ENERGY, INC.

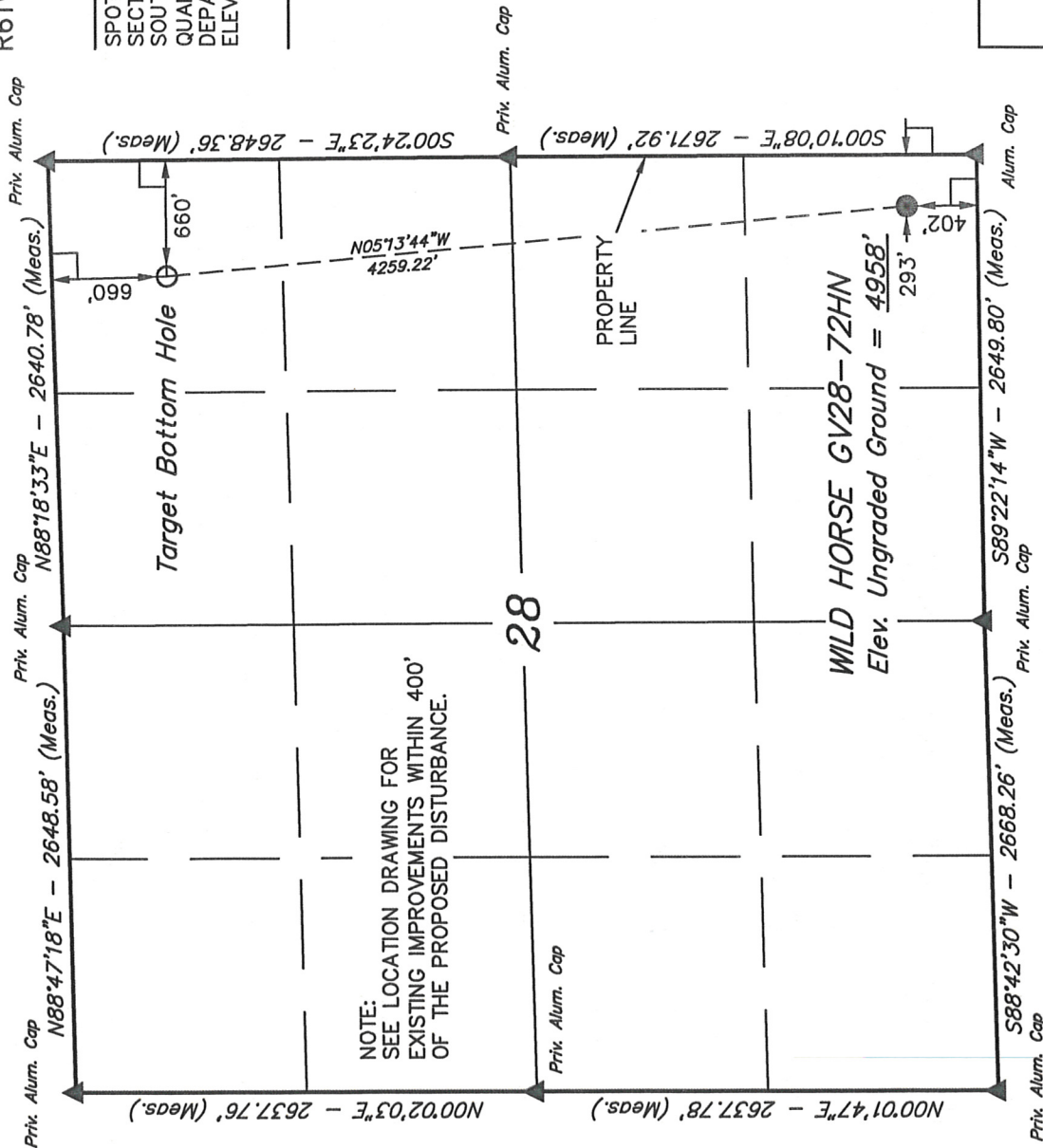
Well location, WILD HORSE GV28-72HN, located as shown in the SE 1/4 SE 1/4 of Section 28, T9N, R61W, 6th P.M., Weld County, Colorado.

BASIS OF ELEVATION

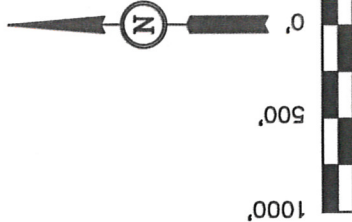
SPOT ELEVATION LOCATED AT THE NORTHEAST CORNER OF SECTION 2, T9N, R61W, 6th P.M., TAKEN FROM THE GROVER SOUTH, QUADRANGLE, COLORADO, WELD COUNTY, 7.5 MINUTE QUAD (TOPOGRAPHICAL MAP) PUBLISHED BY THE UNITED STATES DEPARTMENT OF THE INTERIOR, GEOLOGICAL SURVEY. SAID ELEVATION IS MARKED AS BEING 5043 FEET.

BASIS OF BEARINGS

BASIS OF BEARINGS IS A G.P.S. OBSERVATION.



NOTE:
SEE LOCATION DRAWING FOR
EXISTING IMPROVEMENTS WITHIN 400'
OF THE PROPOSED DISTURBANCE.



CERTIFICATE

THIS IS TO CERTIFY THAT THE ABOVE PLAT WAS PREPARED FROM FIELD NOTES OF ACTUAL SURVEYS MADE BY ME OR UNDER MY SUPERVISION AND THAT THE SAME ARE TRUE AND CORRECT TO THE BEST OF MY KNOWLEDGE AND BELIEF.

REGISTERED LAND SURVEYOR
REGISTRATION NO. 17593
STATE OF COLORADO
90-22312

UNTAH ENGINEERING & LAND SURVEYING
85 SOUTH 200 EAST - VERNAL, UTAH 84078
(435) 789-1017

LEGEND:

- = 90° SYMBOL
- = PROPOSED WELL HEAD.
- ▲ = SECTION CORNERS LOCATED.

FEATURE TABLE

EXISTING FEATURE	DIRECTION	LENGTH
PROPERTY LINE	EAST	293'

PDOP = 1.4

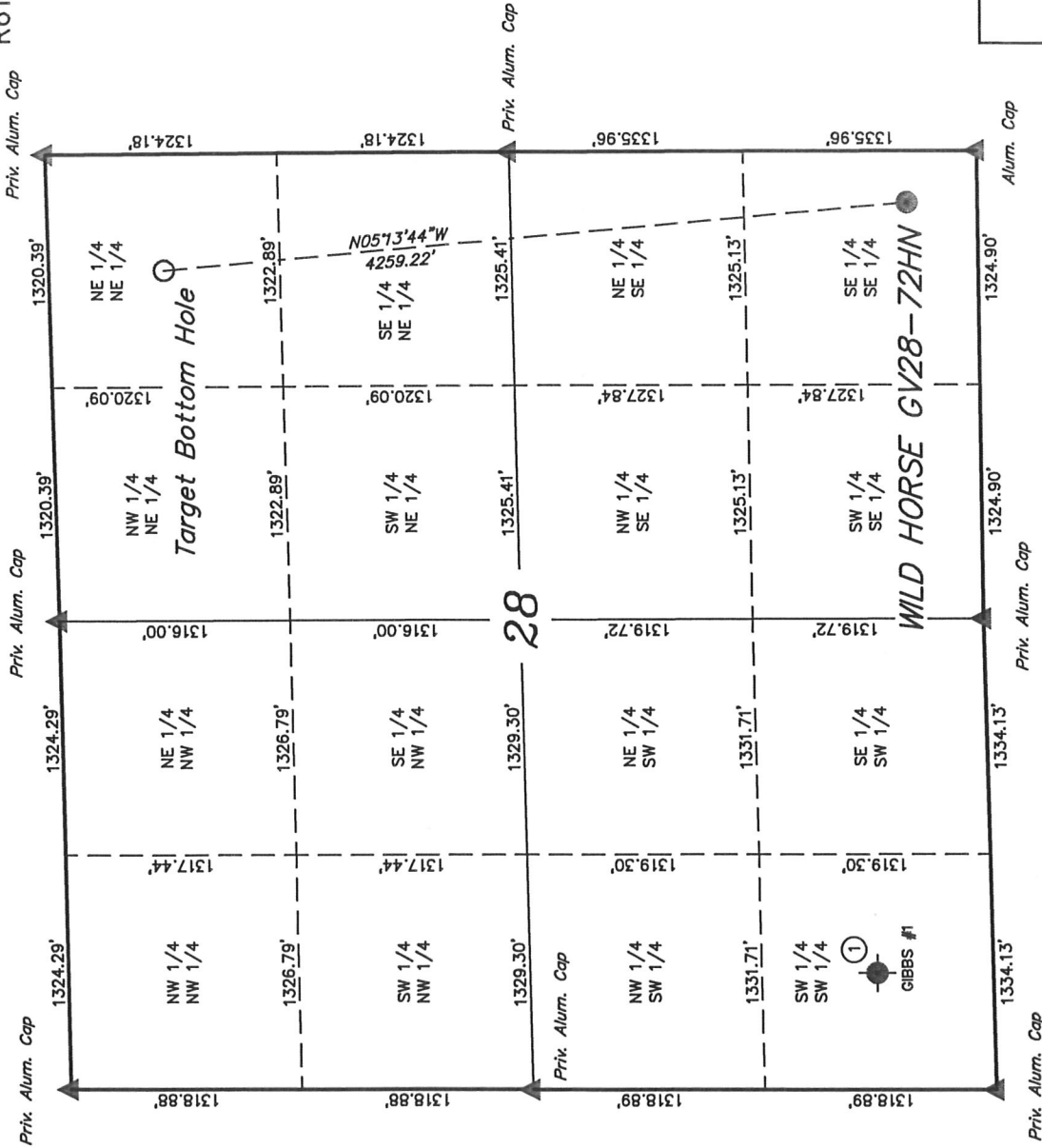
NAD 83 (TARGET BOTTOM HOLE)	NAD 83 (SURFACE LOCATION)
LATITUDE = 40°43'31.56" (40.725433)	LATITUDE = 40°42'49.66" (40.713794)
LONGITUDE = 104°12'13.14" (104.203650)	LONGITUDE = 104°12'08.08" (104.202244)

SCALE 1" = 1000'	DATE SURVEYED: 07-26-12	DATE DRAWN: 10-19-12
PARTY LOREN SHANKS A.G. J.M.H.	REFERENCES G.L.O. PLAT	
WEATHER HOT	FILE	
		NOBLE ENERGY, INC.

SITE SKETCH T9N, R61W, 6th P.M.

NOBLE ENERGY, INC.

Well location, WILD HORSE GV28-72HN, located as shown in the SE 1/4 SE 1/4 of Section 28, T9N, R61W, 6th P.M., Weld County, Colorado.



LEGEND:

- ▲ = SECTION CORNERS LOCATED.
- = PROPOSED WELL HEAD.
- = TARGET BOTTOM HOLE.
- ⊙ = ABANDONED WELLS

UNTAH ENGINEERING & LAND SURVEYING
85 SOUTH 200 EAST - VERNAL, UTAH 84078
(435) 789-1017

WELL NAME	QTR-QTR	FOOTAGES	LATITUDE	LONGITUDE	ELEVATION	PDOP
GIBBS #1	SW 1/4 SW 1/4	FROM COGCC DATABASE	40.714203°	104.218037°	4972'	N.A.

SCALE 1" = 1000'	DATE SURVEYED: 07-26-12	DATE DRAWN: 10-19-12
PARTY LOREN SHANKS A.G. J.M.H.	REFERENCES G.L.O. PLAT	
WEATHER HOT	FILE NOBLE ENERGY, INC.	