

Décollement
Consulting
Inc.



Scale 1:240 (5"=100') Imperial
Measured Depth Log

Well Name: ECGS # 6-15 WPD002-1
Location: SW/NW Sec.6,T11N,R52W Logan County, Colorado
License Number: 05-075-09401 Region: West Peetz
Spud Date: 11/10/2012 Drilling Completed: 11/12/2012
Surface Coordinates: 1611' FNL, 999' FWL
Bottom Hole 1611' FNL, 999' FWL
Coordinates:
Ground Elevation (ft): 4556' K.B. Elevation (ft): 4570'
Logged Interval (ft): 1200' To: 5270' Total Depth (ft): 5270'
Formation: Dakota D Sandstone.
Type of Drilling Fluid: WBM

Printed by MUD.LOG from WellSight Systems 1-800-447-1534 www.WellSight.co

OPERATOR

Company: East Cheyenne Gas Storage LLC.
Address: 10901 W. Toller Dr. Suite 200
Littleton, CO. 80127

GEOLOGIST

Name: Leo Carrasco
Company: Decollement Consulting, Inc
Address: 13300 Braun Rd.
Golden, CO 80401

ROCK TYPES

Cmt
 Anhy
 Bent
 Brec
 Cht
 Clyst
 Coal

Congl
 Dol
 Gyp
 Igne
 Lmst
 Meta
 Mrlst

Salt
 Shale
 Shcol
 Shgy
 Sltst
 Ss
 Till

Sh--green
 Sh red-brn
 Sh gy-red
 Shgy
 Sltst--gray
 Sltst-gy red

ACCESSORIES

MINERAL

Anhy
 Arggrn
 Arg
 Bent
 Bit
 Breclfrag
 Calc
 Carb
 Chtdk
 Chtlt
 Dol
 Feldspar
 Ferrpel
 Ferr
 Glau
 Gyp
 Hvymin
 Kaol
 Marl



Minxl
 Nodule
 Phos
 Pyr
 Salt
 Sandy
 Silt
 Sil
 Sulphur
 Tuff

FOSSIL

Algae
 Amph
 Belm
 Bioclst
 Brach
 Bryozoa
 Cephal
 Coral



Crin
 Echin
 Fish
 Foram
 Fossil
 Gastro
 Oolite
 Ostra
 Pelec
 Pellet
 Pisolite
 Plant
 Strom

STRINGER

Anhy
 Arg
 Bent
 Coal
 Dol



Gyp
 Ls
 Mrst
 Sltstrg
 Ssstrg

TEXTURE

Boundst
 Chalky
 Cryxln
 Earthy
 Finexln
 Grainst
 Lithogr
 Microxln
 Mudst
 Packst
 Wackest

OTHER SYMBOLS

POROSITY

Earthy
 Fenest
 Fracture
 Inter
 Moldic
 Organic
 Pinpoint
 Vuggy
 Csg shoe right



Csg shoe left
 Cmt

SORTING

Well
 Moderate
 Poor

ROUNDING

Rounded



Subrnd
 Subang
 Angular

OIL SHOW

Even
 Spotted
 Ques
 Dead

INTERVAL

Core
 Dst

EVENT

Csg shoe right
 Csg shoe left
 Rft
 Sidewall
 Iso-tube

Curve Track 1

ROP (min/ft) ———
 WOB (units) ———
 Gamma (API) ———

Drill Rate Scale 0-2

ROP (min/ft) ———
 WOB (units) ———
 Gamma (API) ———
 NB# 1, 8.75", PDC.
 Mudmotor Halliburton,
 FX55 in @ 1228'.

MND @ 1225' 11/11/2012

Depth

%
Lithology

Porosity Type
Porosity

Lithology

Oil Shows

Geological Descriptions

TG,C1-C5

TG (units) ———
 C1 (ppm) ———
 C2 (ppm) ———
 C3 (ppm) ———
 C4 (ppm) ———
 C5 (ppm) ———

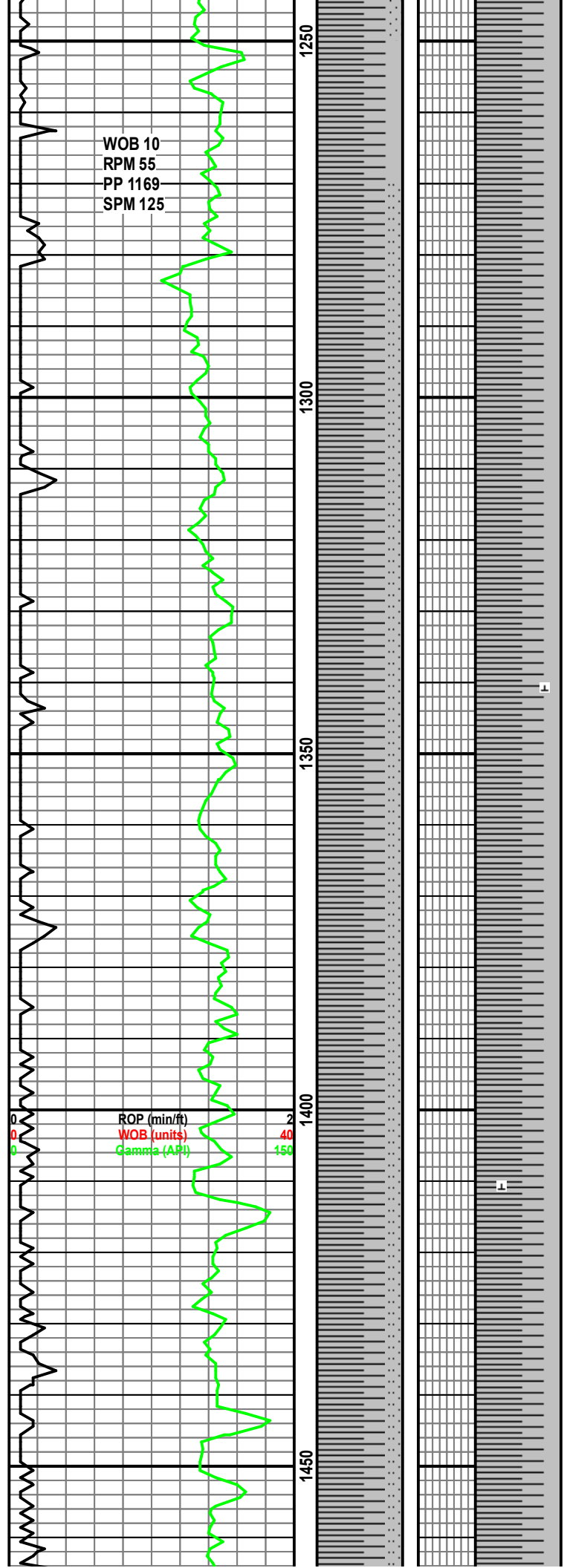
Decollement Consulting
 arrived on location and
 started rigging up
 11/10/2012

Top Pierre @ 1225' MD.

Set 9 5/8" casing at 1228'

SH: m gy, sft - frm, blkly - plty, dull, sl
scale w/ SITS. It's for transfer of

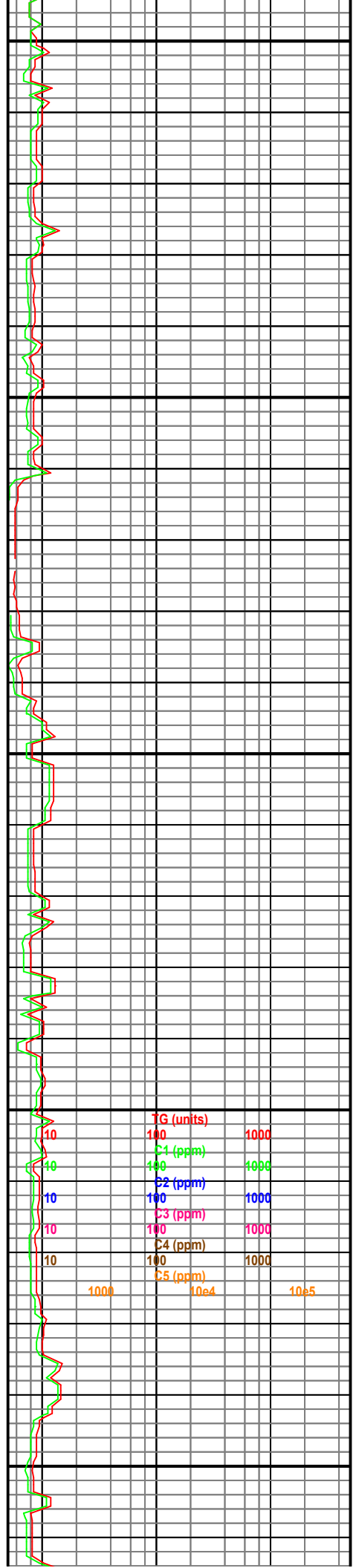
TG (units) ———
 C1 (ppm) ———
 C2 (ppm) ———
 C3 (ppm) ———
 C4 (ppm) ———
 Gas Test ———
 C1 (ppm) ———
 C2 (ppm) ———
 C3 (ppm) ———
 C4 (ppm) ———
 C5 (ppm) ———

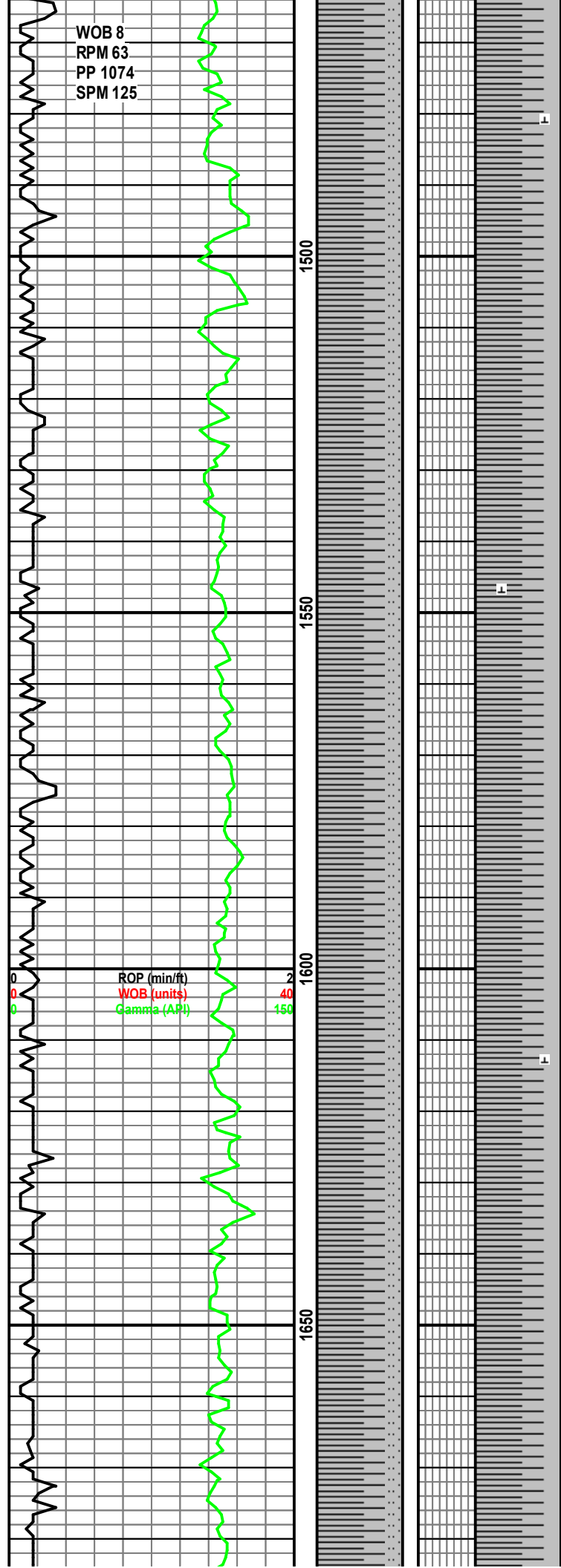


calc, w/ SLTST, lt-gy, fri, tr vf gr sd, sl
calc, lt gy cly mtx, cmt.

SH: m gy, sft - frm, blk - plty, dull, sl
calc, w/ SLTST, lt-gy, fri, tr vf gr sd, sl
calc, lt gy cly mtx.

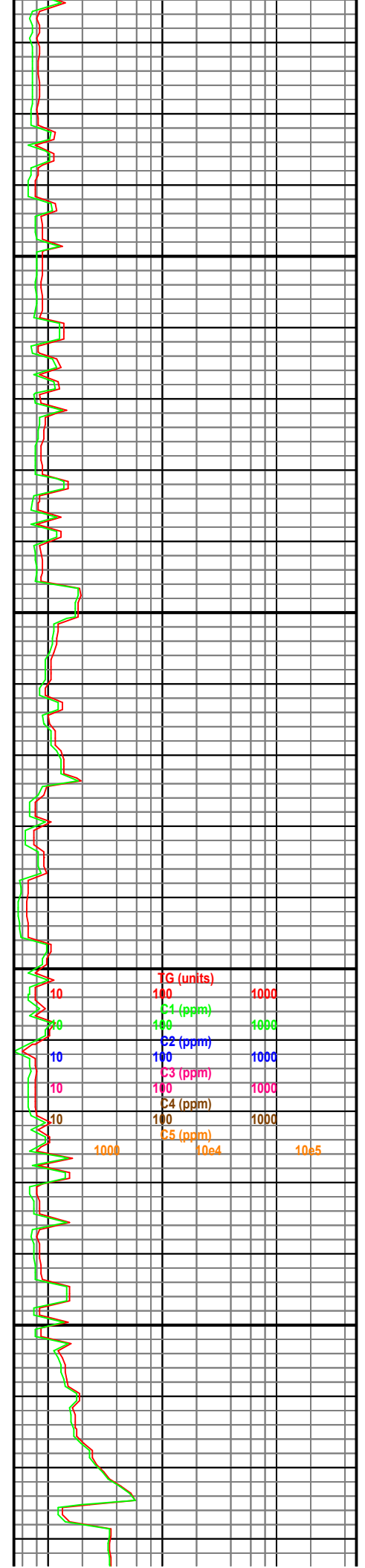
SH: m gy, sft - frm, blk - plty, dull, sl
calc, w/ SLTST, lt-gy, fri, tr vf gr sd, sl
calc, lt gy cly mtx.

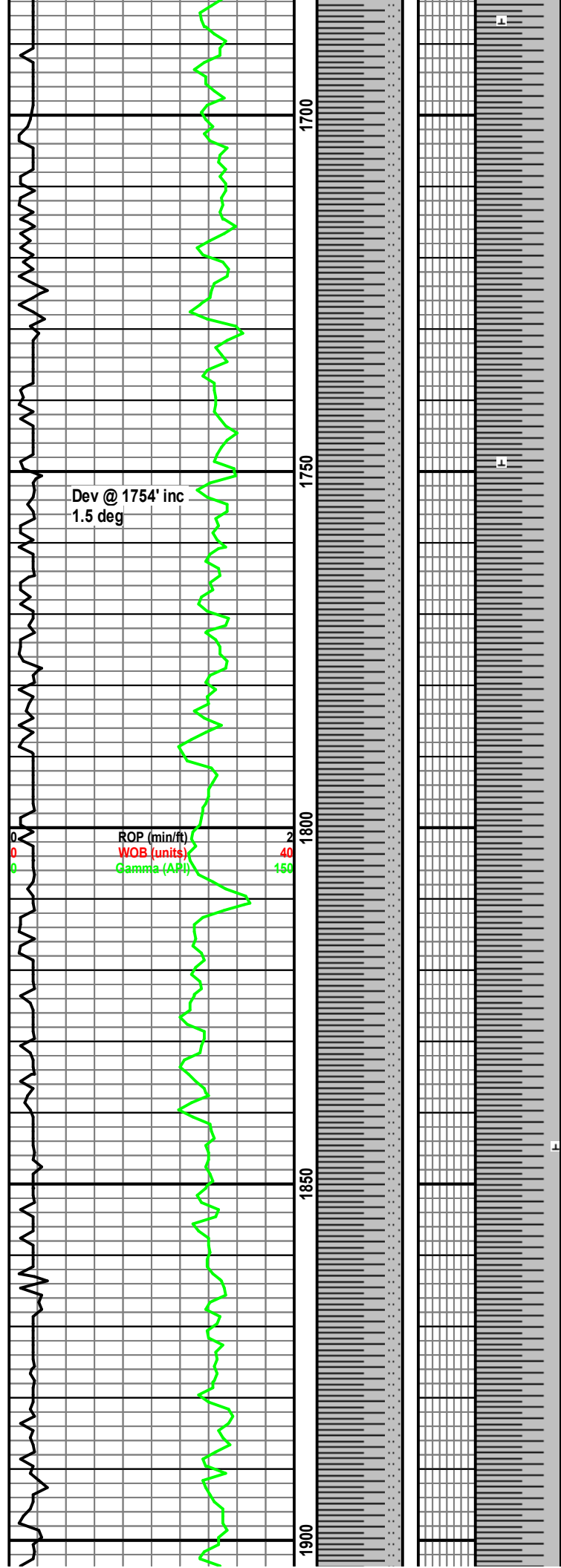




SH: m gy, sft - frm, blk - plty, dull, sl
calc, w/ SLTST, lt-gy, fri, tr vf gr sd, sl
calc, lt gy cly mtx.

SH: m gy, sft - frm, blk - plty, dull, sl
calc, w/ SLTST, lt-gy, fri, tr vf gr sd, sl
calc, lt gy cly mtx.

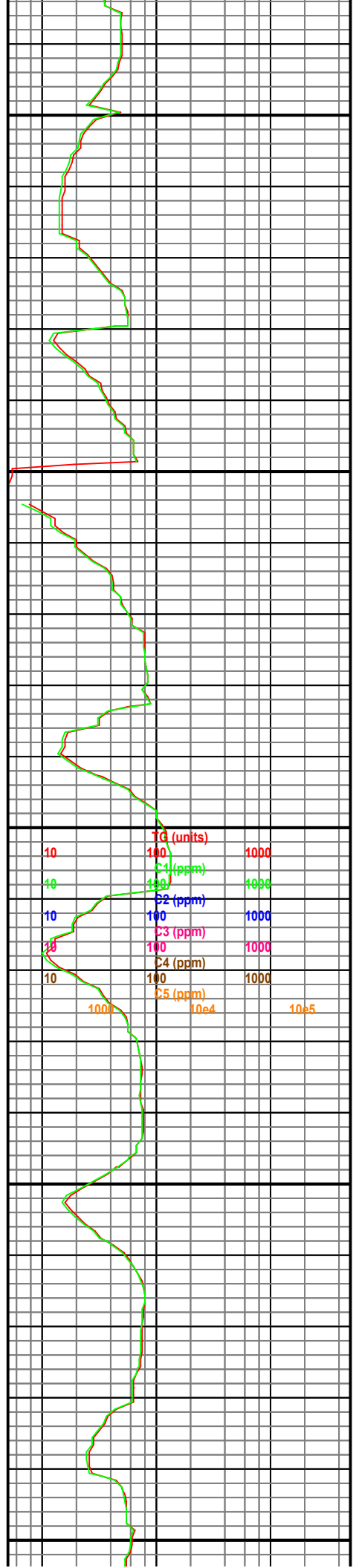


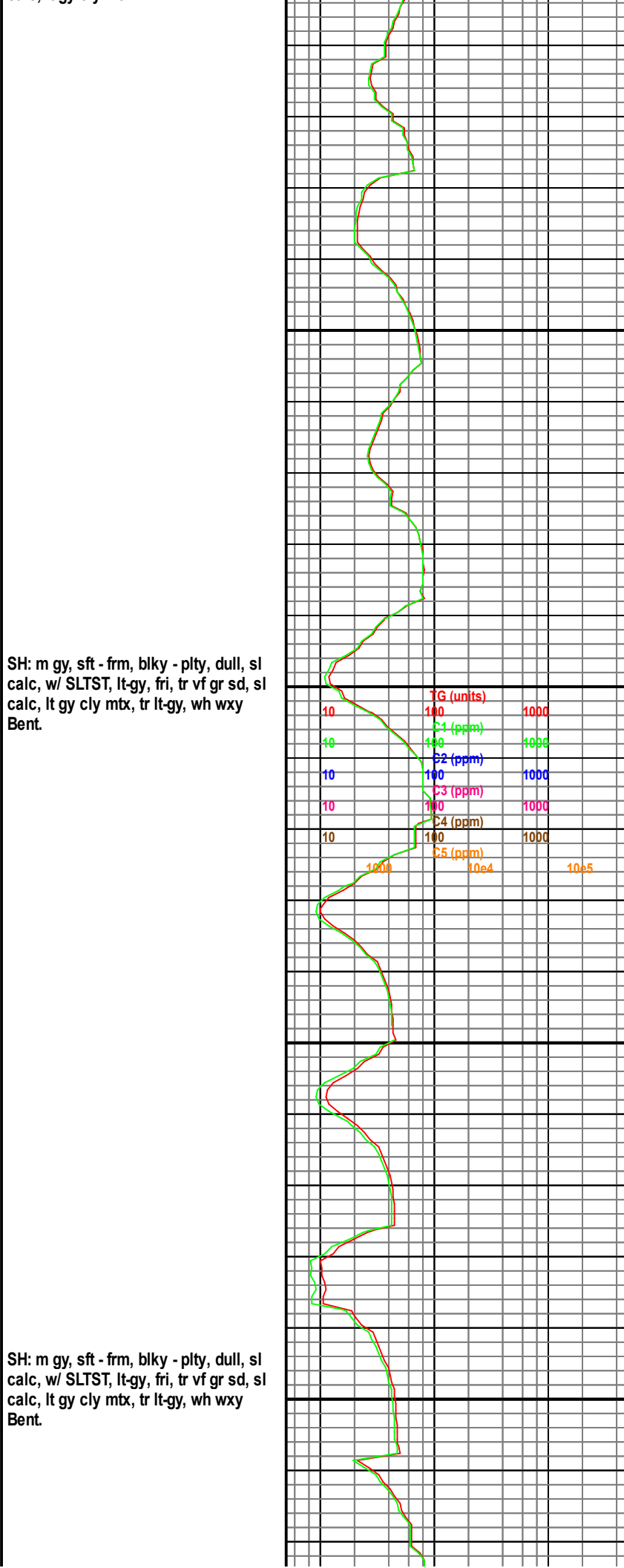
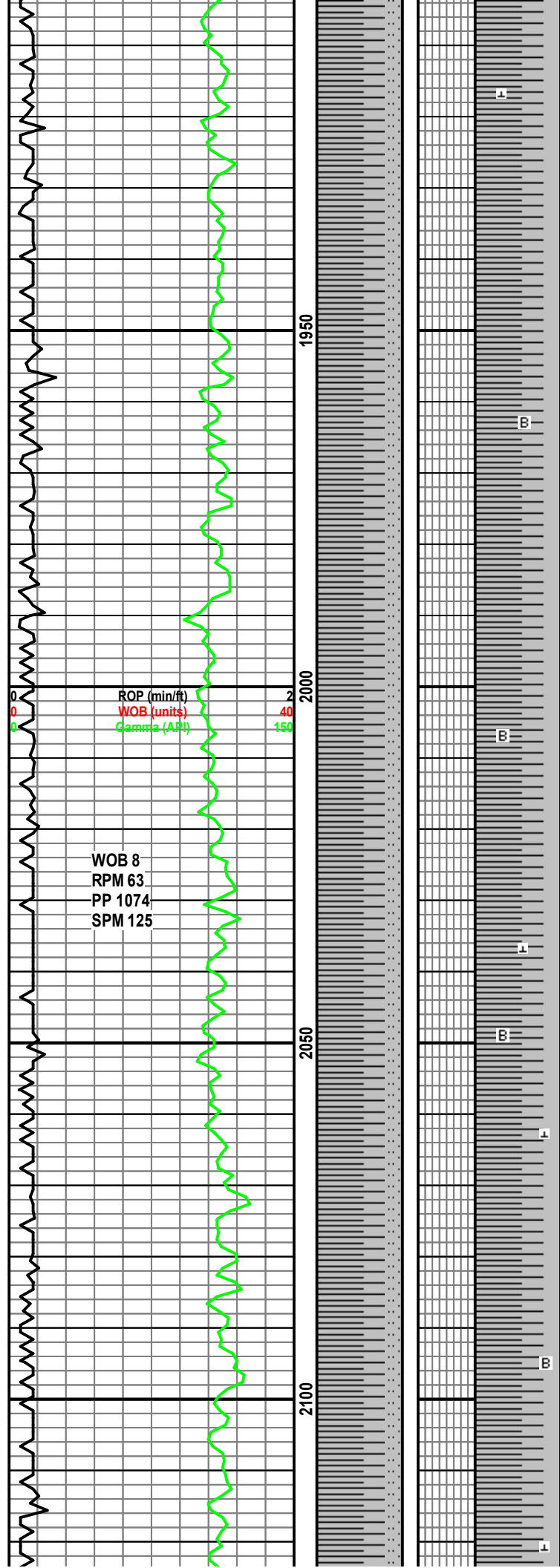


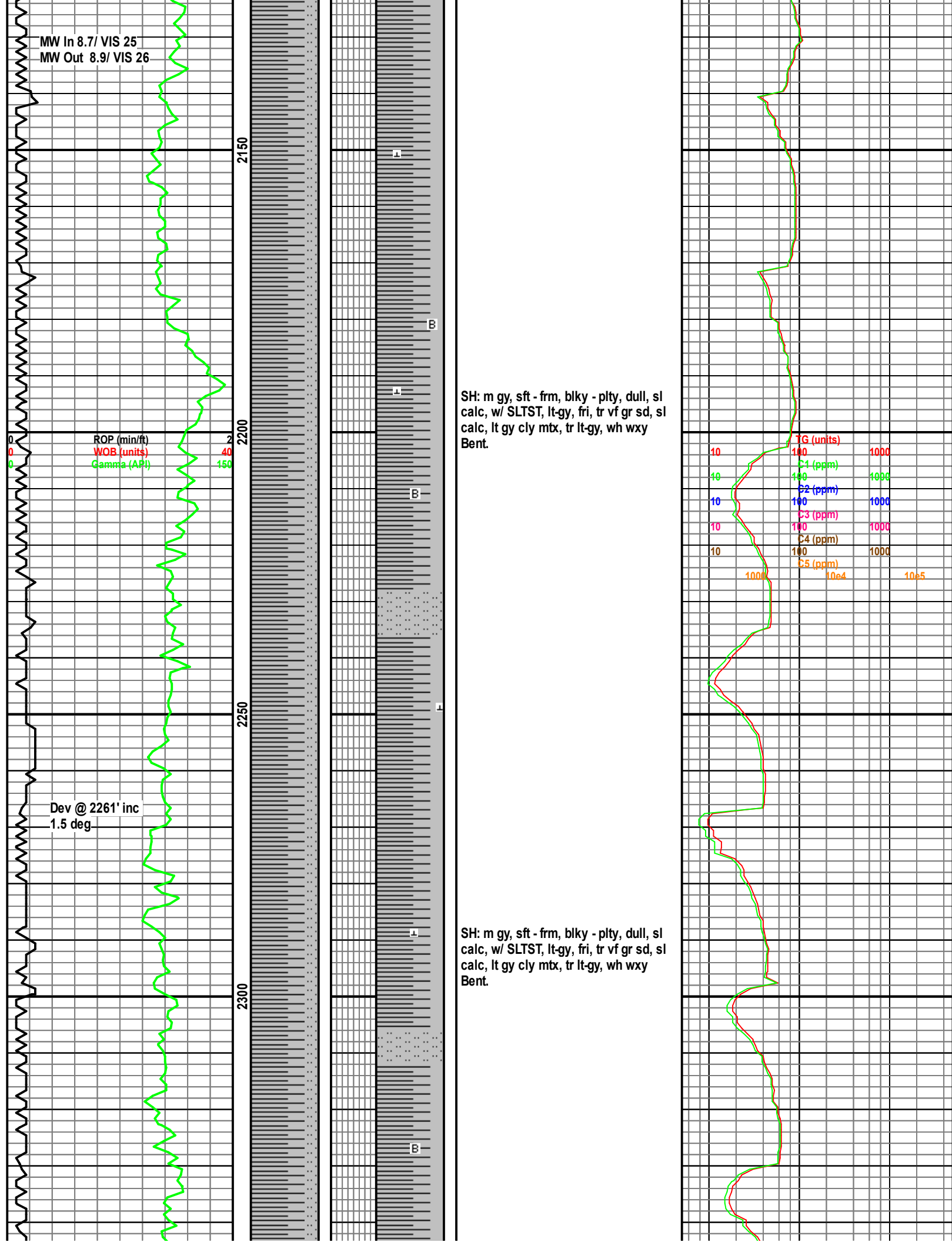
SH: m gy, sft - frm, blk - plty, dull, sl
calc, w/ SLTST, lt-gy, fri, tr vf gr sd, sl
calc, lt gy cly mtx.

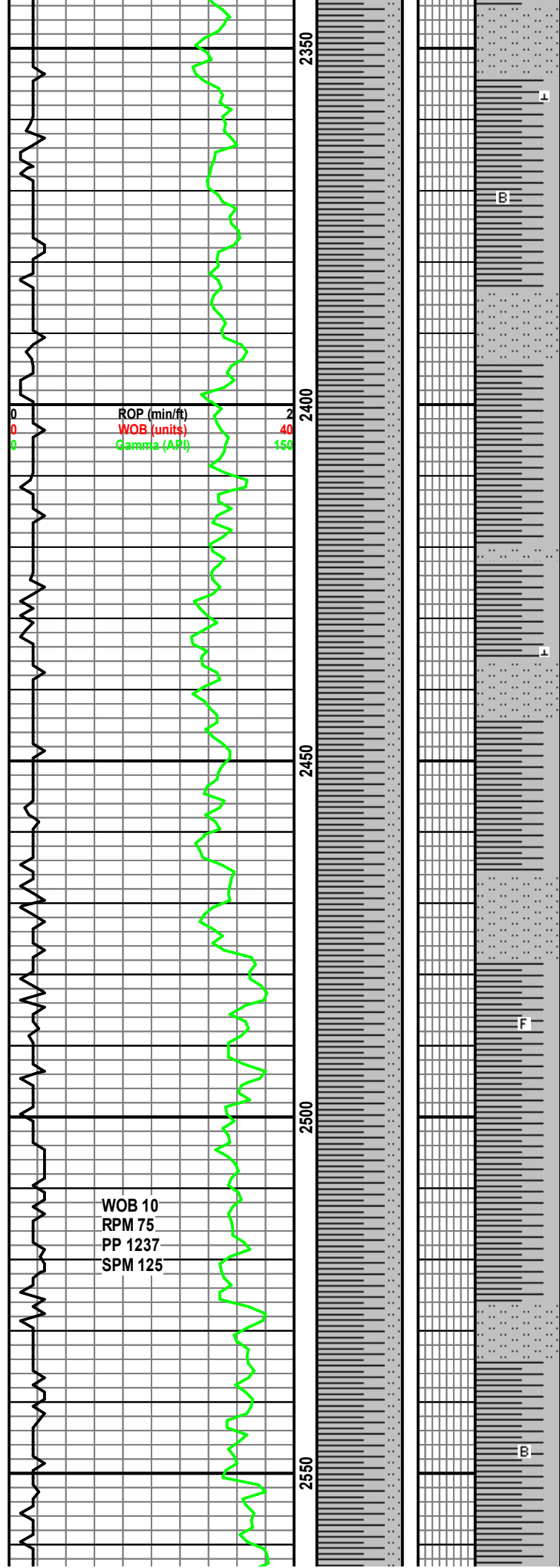
SH: m gy, sft - frm, blk - plty, dull, sl
calc, w/ SLTST, lt-gy, fri, tr vf gr sd, sl
calc, lt gy cly mtx.

SH: m gy, sft - frm, blk - plty, dull, sl
calc, w/ SLTST, lt-gy, fri, tr vf gr sd, sl
calc, lt av cly mtx.



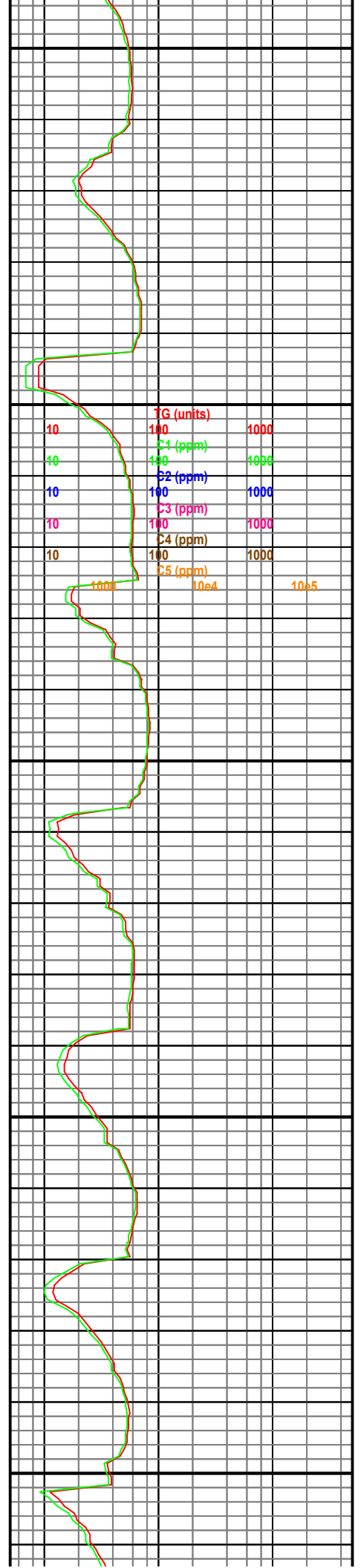


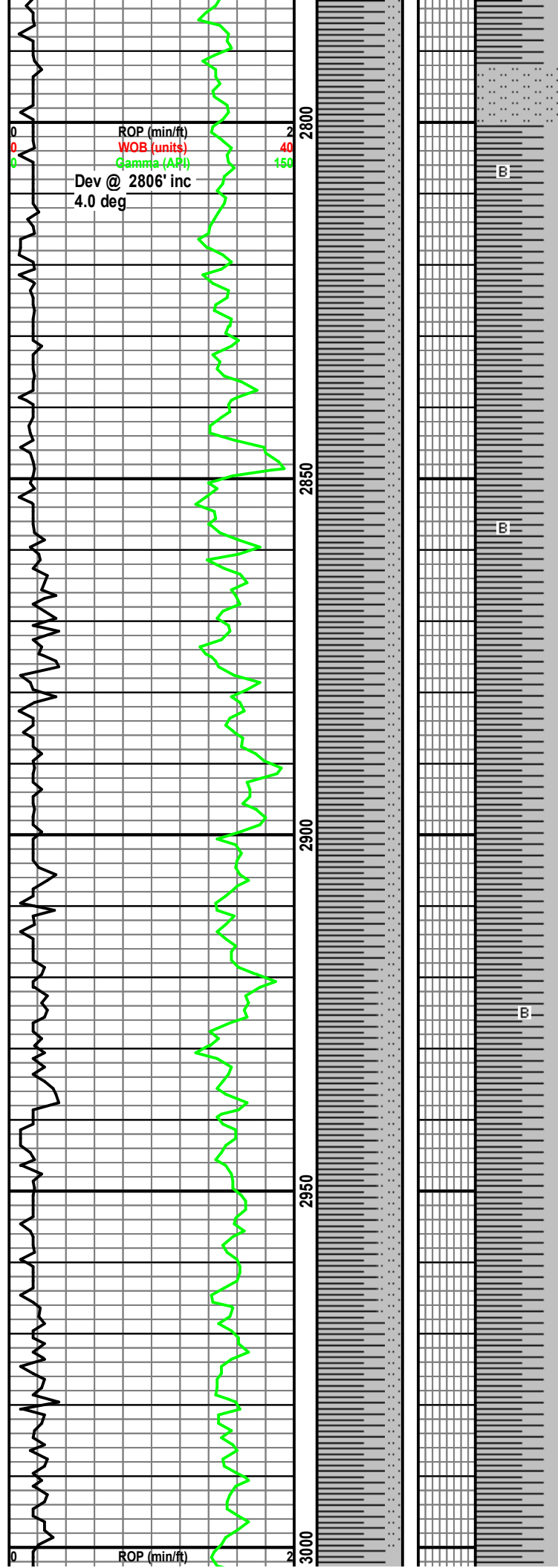




SH: m gy, sft - frm, blk - plty, dull, sl calc, w/ SLTST, lt-gy, fri, tr vf gr sd, sl calc, lt gy cly mtx, tr lt-gy, wh wxy Bent.

SH: m gy, sft - frm, blk - plty, dull, sl calc, w/ SLTST, lt-gy, fri, tr vf gr sd, sl calc, lt gy cly mtx, tr lt-gy, wh wxy Bent.

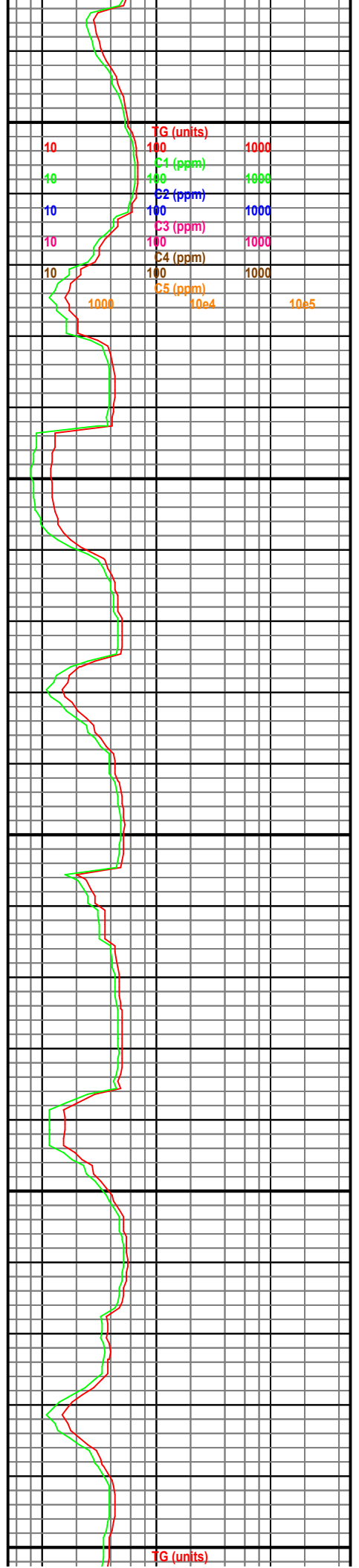


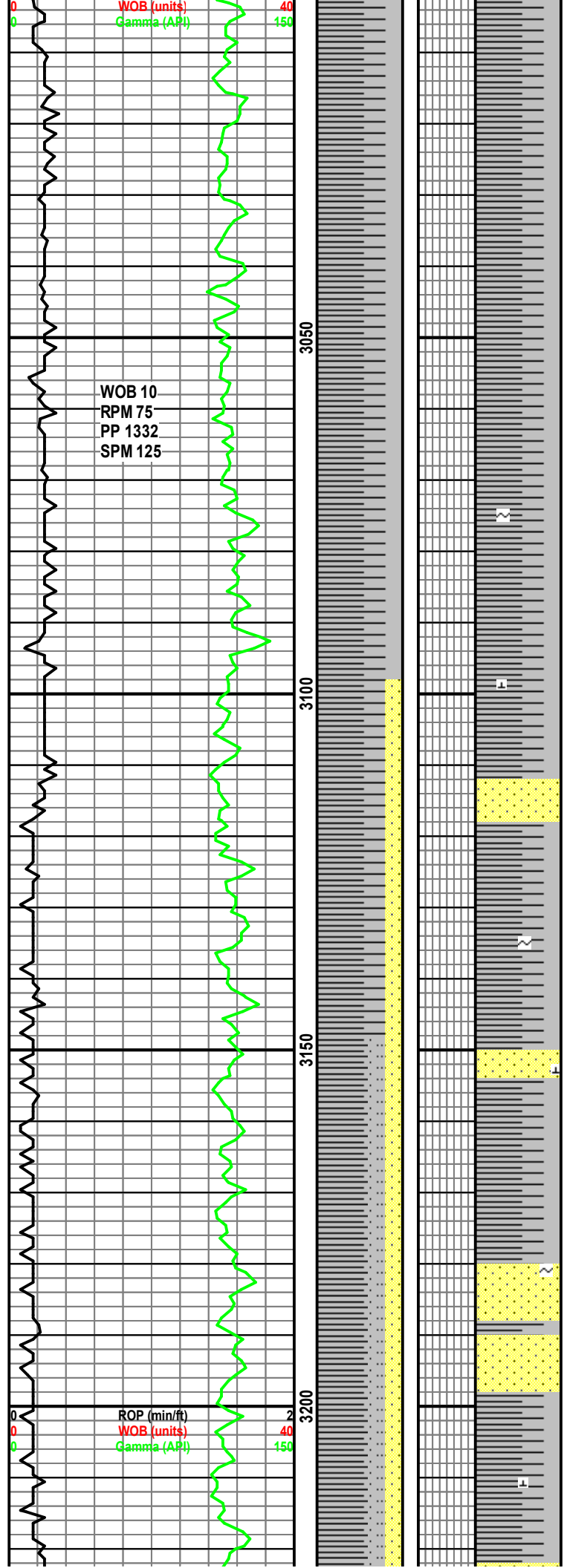


SH: m gy, sft - frm, blk - plty, dull, sl
calc, w/ SLTST, lt-gy, fri, tr vf gr sd, sl
calc, lt gy cly mtx, tr lt-gy, wh wxy
Bent.

SH: m gy, sft - frm, blk - plty, dull, sl
calc, w/ SLTST, lt-gy, fri, tr vf gr sd, sl
calc, lt gy cly mtx, tr lt-gy, wh wxy
Bent.

SH: m av. sft - frm. blk - plty. dull. sl



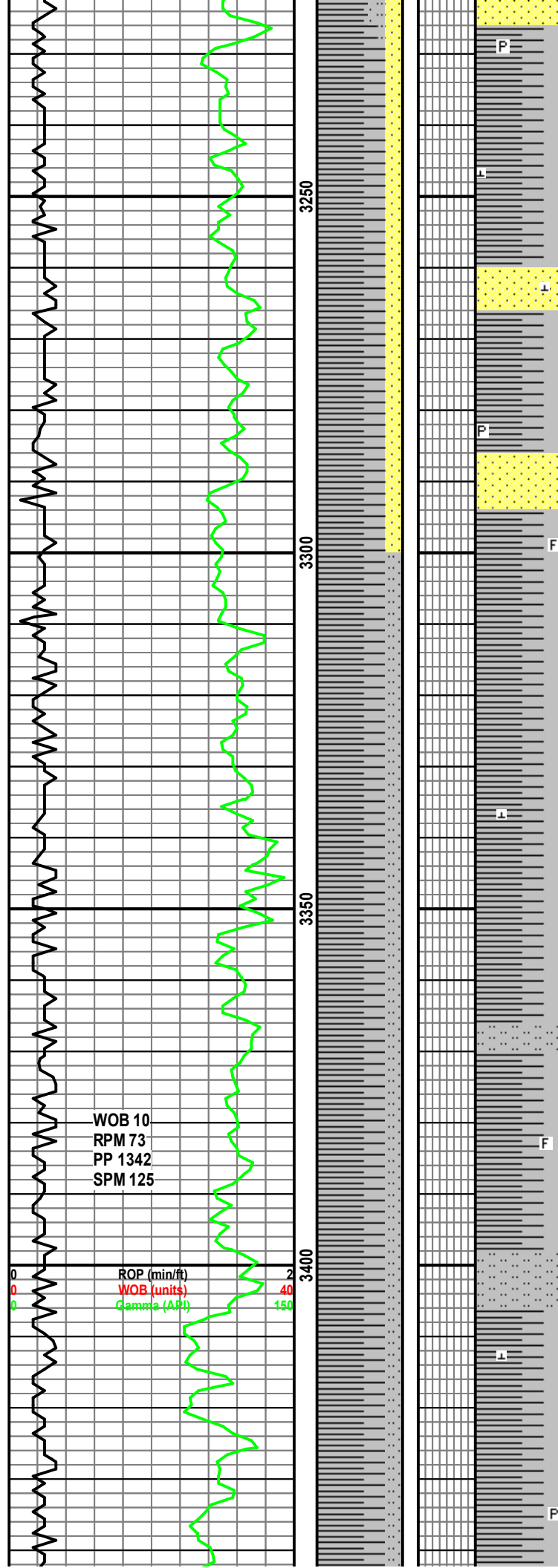


SH: It gy, sft frm, blk - plty, dull, sl
calc, w/ lt gy, lt brn, S&P ip, mod firm,
fri ip, vf(u)- f(l) gr, sbang- sbrnd, shly
mtx, p srt, sl calc cmt, p por, tr glauc ,
Bent.

SH: It gy, sft frm, blk - plty, dull, sl
calc, W/ lt gy, lt brn, S&P ip, mod firm,
fri ip, vf(u)- f(l) gr, sbang- sbrnd, shly
mtx, p srt, sl calc cmt, p por, SS.

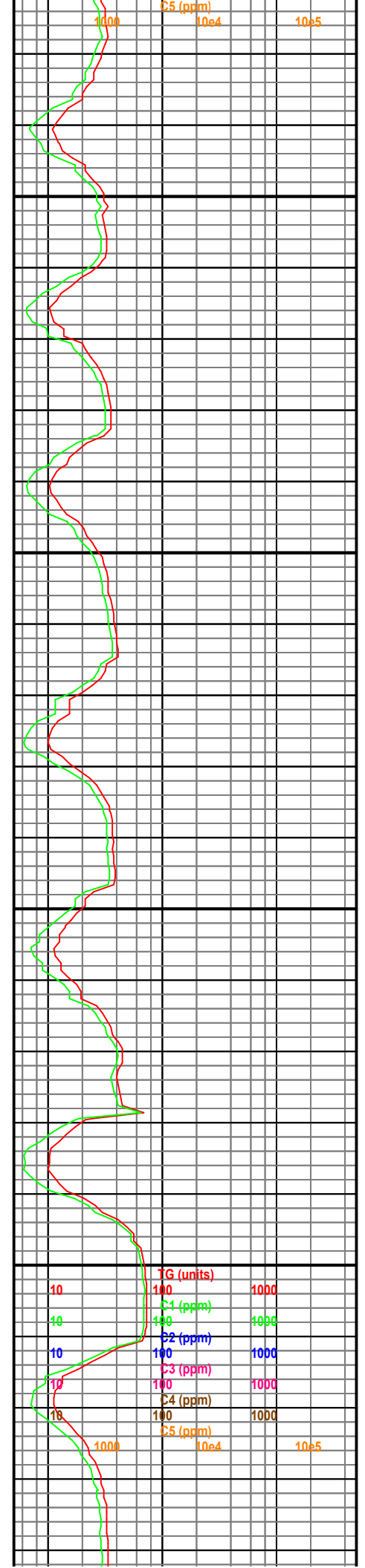
SH: It gy, sft frm, blk - plty, dull, sl
calc, W/ lt gy, lt brn, S&P ip, mod firm,
fri ip, vf(u)- f(l) gr, sbang- sbrnd, shly
mtx, p srt, sl calc cmt, p por, tr glauc ,
SS.

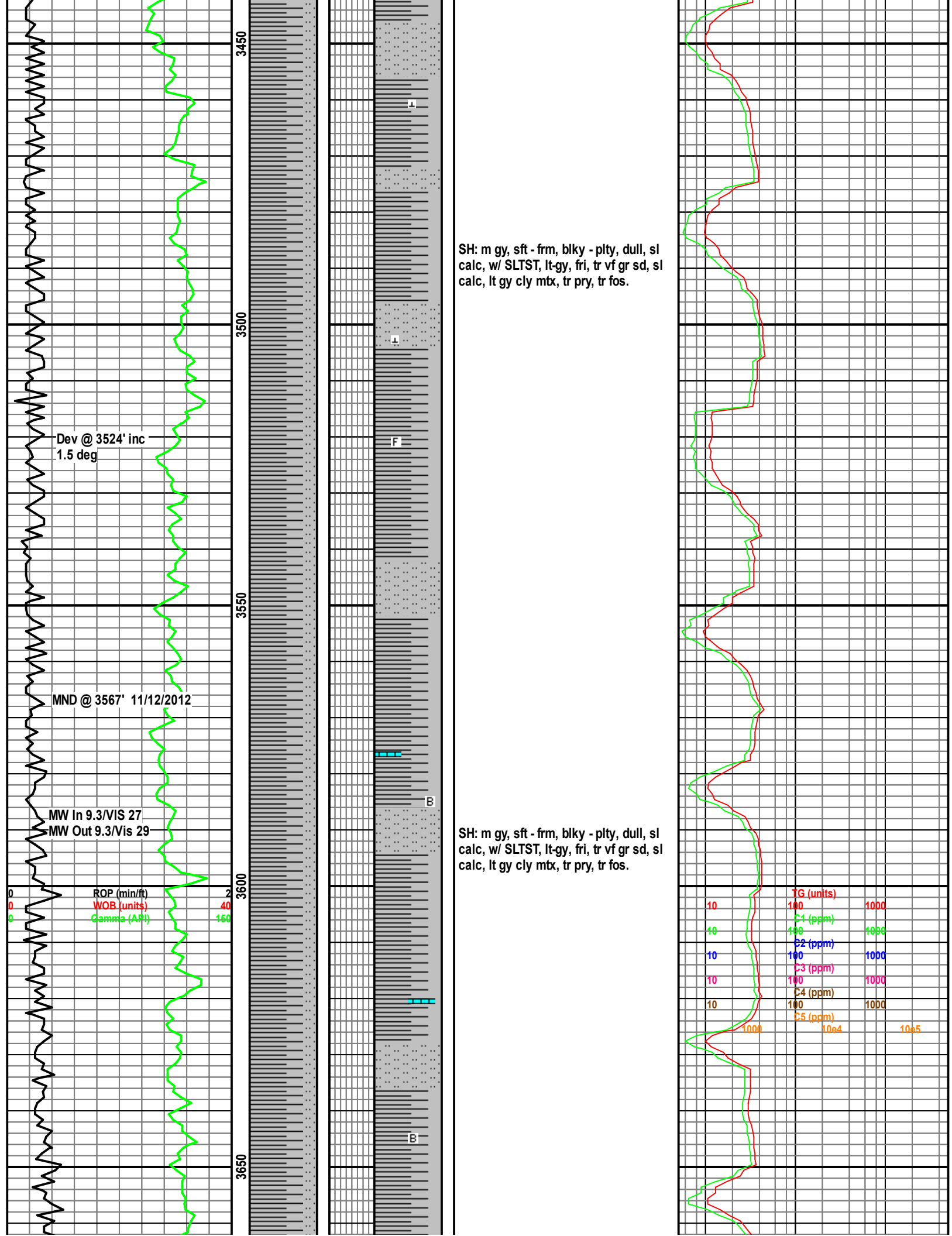


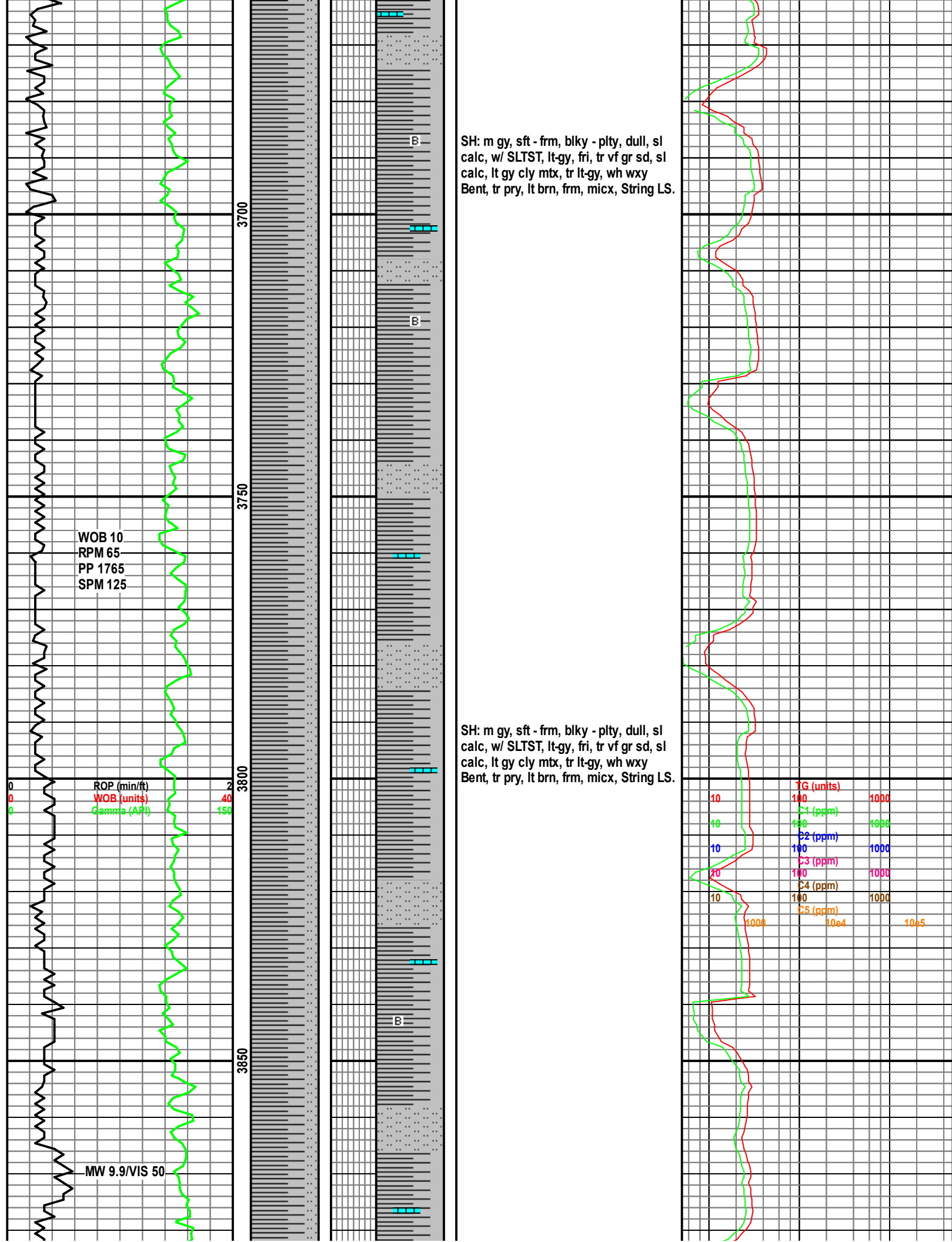


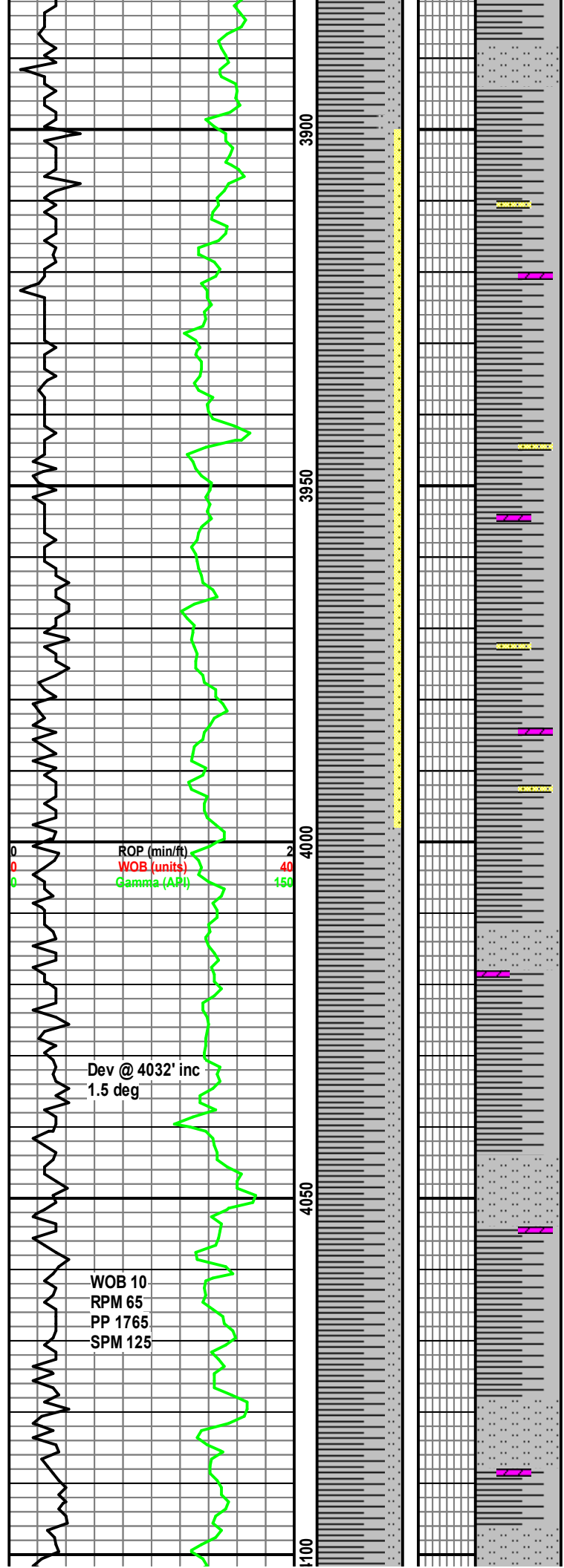
SH: m gy, sft - frm, blk - plty, dull, sl
calc, w/ SLTST, lt-gy, fri, tr vf gr sd, sl
calc, lt gy cly mtx, tr pry, tr fos.

SH: m gy, sft - frm, blk - plty, dull, sl
calc, w/ SLTST, lt-gy, fri, tr vf gr sd, sl
calc, lt gy cly mtx, tr pry, tr fos.



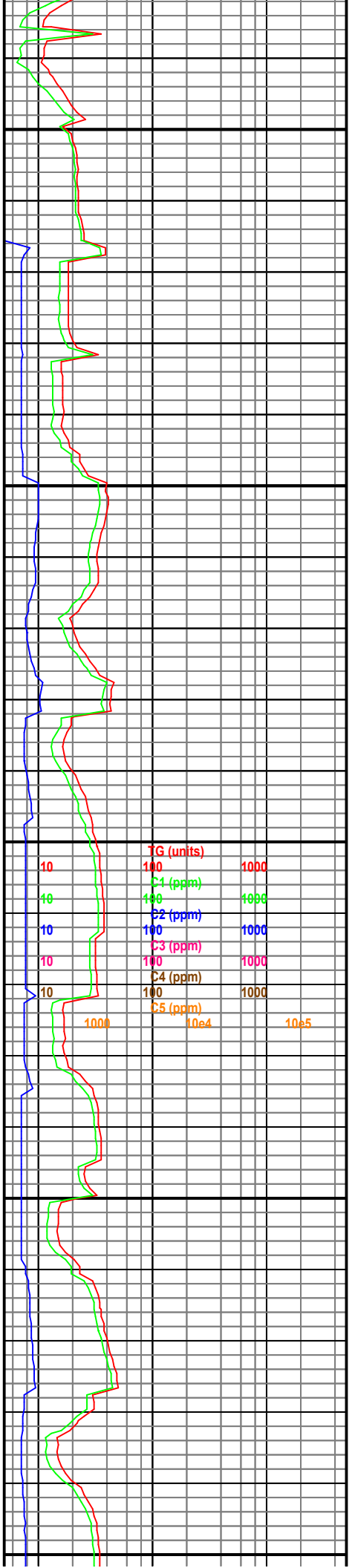


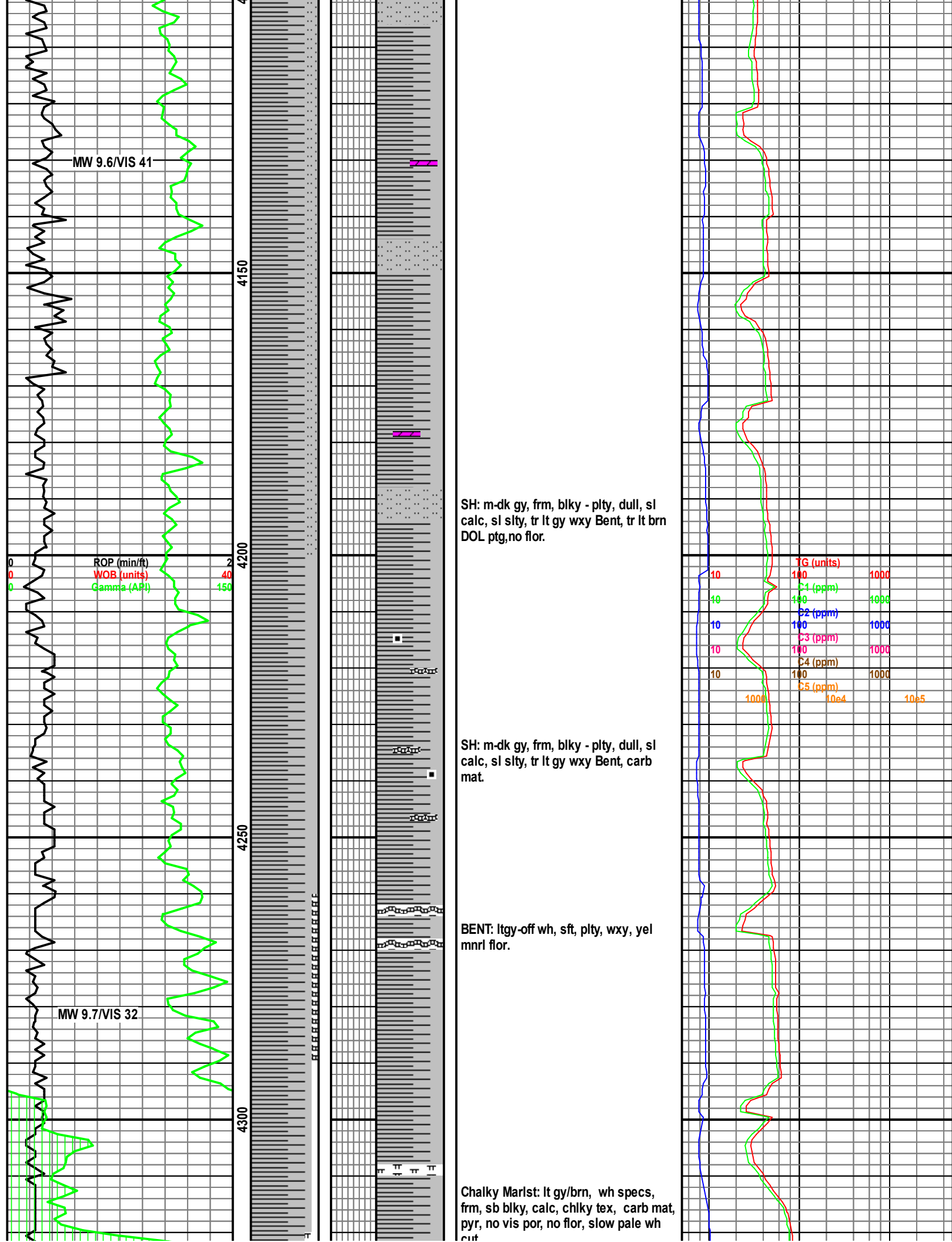


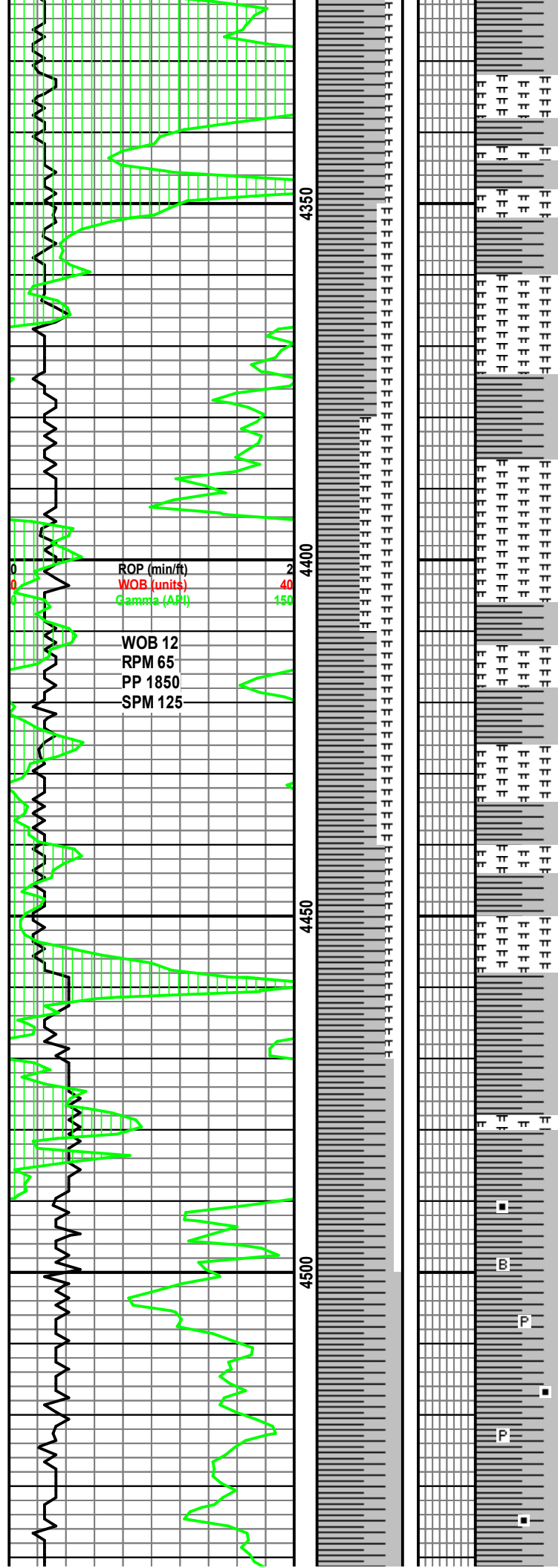


SH: m gy, sft - frm, blk - plty, dull, sl calc, w/ SLTST, lt-gy, fri, tr vf gr sd, sl calc, lt gy cly mtx, tr lt-gy, wh wxy Bent, tr pry, lt brn, frm, micx, String LS.

SH: lt gy, sft-frm, blk - plty, dull, sl calc, W/ lt gy, lt brn, S&P ip, mod firm, fri ip, vf(u)- f(l) gr, sbang-sbrnd, shly mtx, p srt, sl calc cmt, p por, SS.







cut.

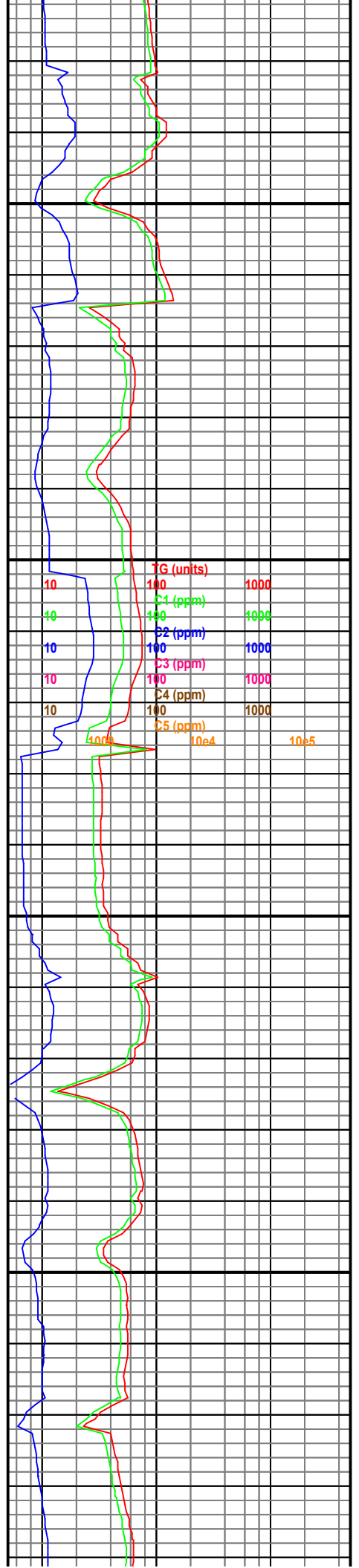
Top Niobrara @ 4344' MD.

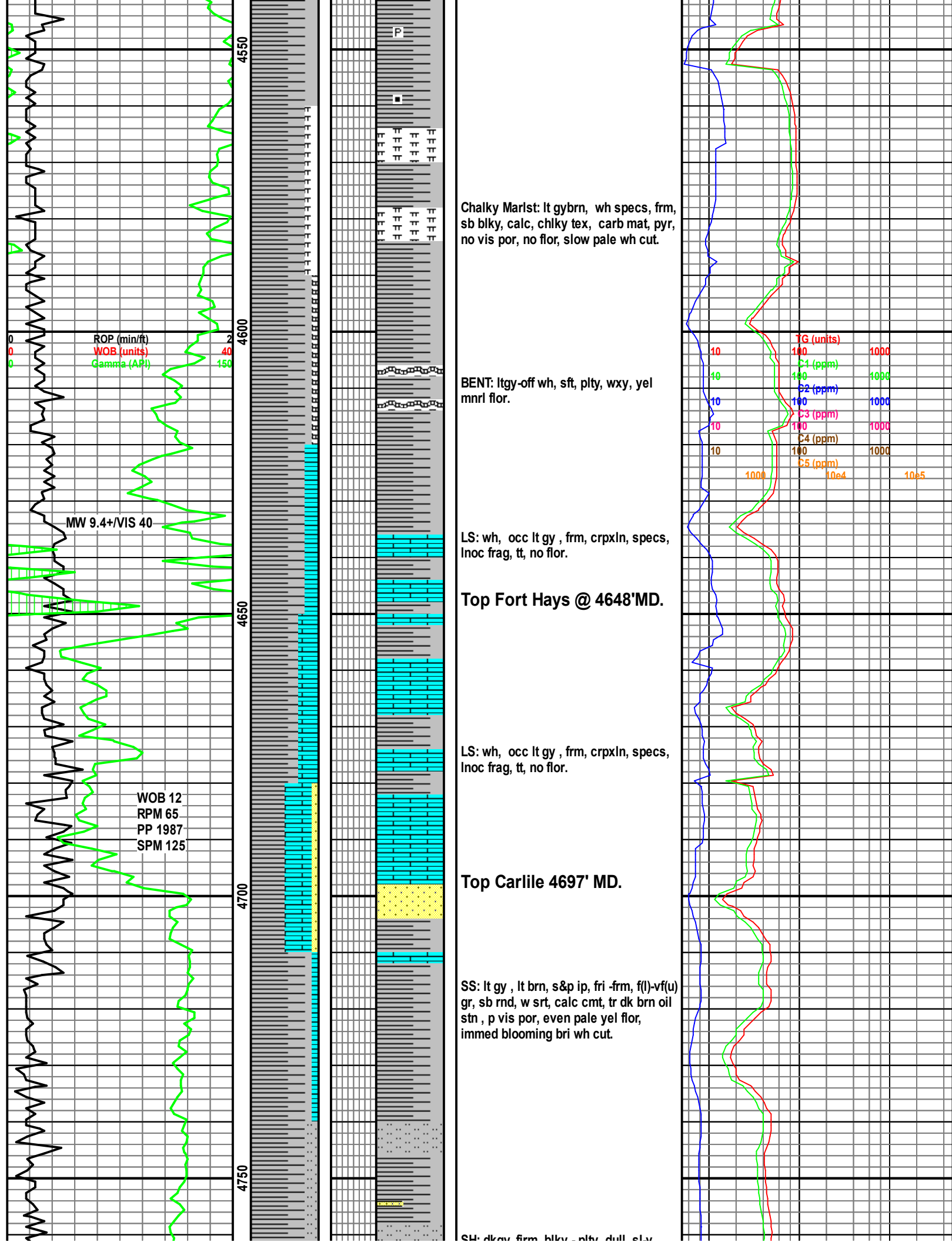
MARLST: It gy, specs & mot specs, frm, chlky, calc, wispy carb mat, pyr, no vis por, no flor, mod wh cut.

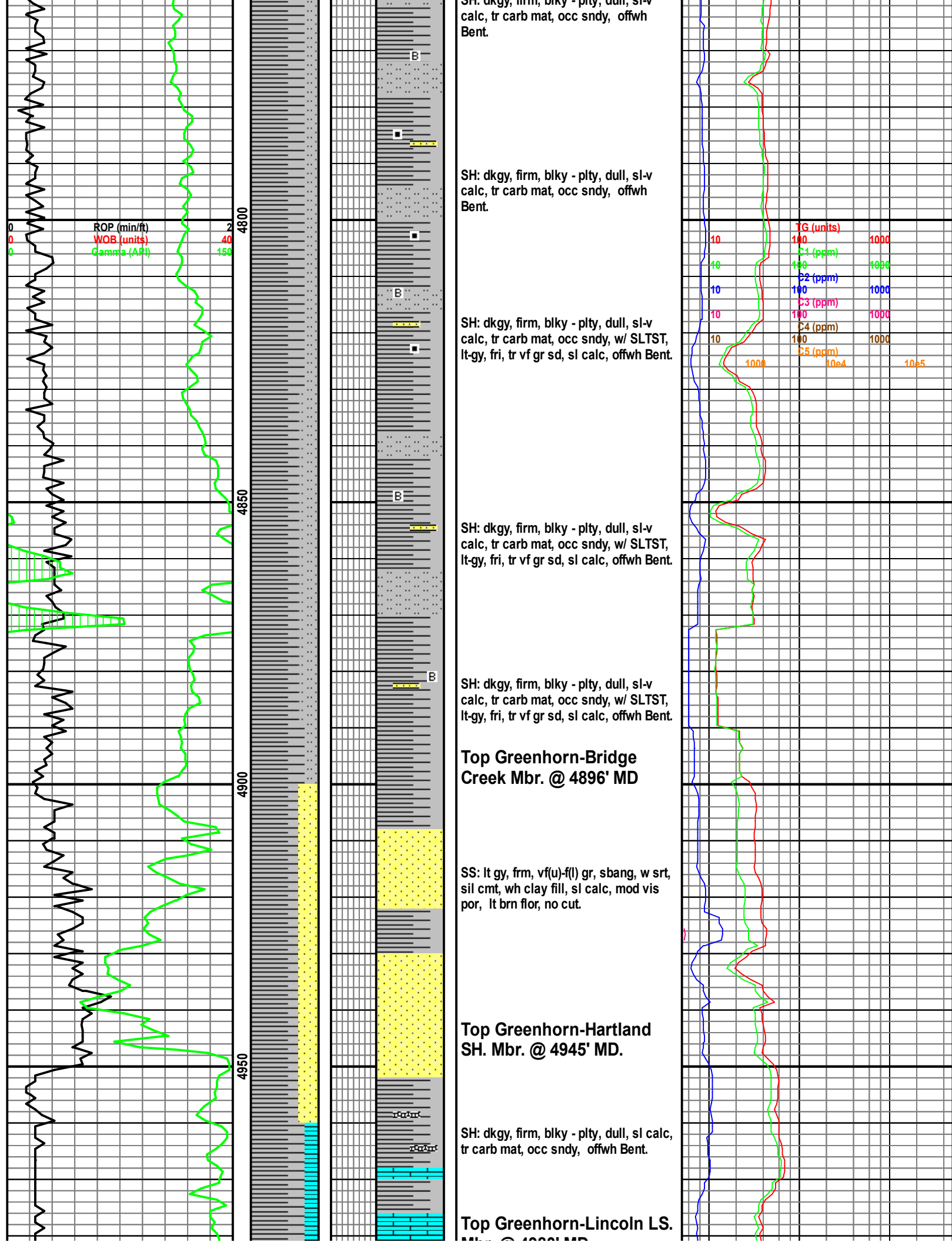
MARLST: It gy, specs & mot specs, frm, chlky, calc, wispy carb mat, pyr, no vis por, no flor, mod wh cut.

MARLST: It gy, specs & mot specs, frm, chlky, calc, wispy carb mat, pyr, no vis por, no flor, mod wh cut.

SH: dk gy, blk, blk-ply, mod calc, carb specs, tr pyr, tr Bent, no flor, occ slow wh cut.







SH: dkgy, firm, blk - plty, dull, sl calc,
tr carb mat, occ sndy, offwh Bent.

SH: dkgy, firm, blkly - plty, dull, sl-v
calc, tr carb mat, occ sndy, abnt offwh
Bent.

BENT: ltgy-off wh, sft, plty, wxy, yel
mnrl flor

SH: dkgy, firm, blk - plty, dull, sl-v
calc, tr carb mat, occ sndy, abnt offwh
Bent.

SH: dkgy, firm, blk - plty, dull, sl-v
calc, tr carb mat, occ sndy, abnt offwh
Bent.

SS: wh, lt brn ip, frm, vf(u)-f(l) gr, sbrnd, w srt, sil cmt, wh clay fill, sl calc, mod vis por, tr Bentonite, tr pry, ptchy bri yel flor, slow strmg wh cuts from lt brn.

Top Dakota D3 @ 5184'MD

SS: wh, lt brn ip, frm, vf(u)-f(l) gr, sbrnd, w srt, sil cmt, wh clay fill, sl calc, mod vis por, tr Bentonite, tr pry, ptchy bri yel flor,slow strmg wh cuts from lt brn .

T. H. 4-5004145

TG (units)		
100	1000	
C-1 (ppm)		
100	1000	
C-2 (ppm)		
100	1000	
C-3 (ppm)		
100	1000	
C-4 (ppm)		
100	1000	
C-5 (ppm)		
10e4	10e5	

