

Décollement  
Consulting  
Inc.



Scale 1:240 (5"=100') Imperial  
Measured Depth Log

Well Name: ECGS # 6-13 WPD007-2  
Location: NE/NW Sec.6,T11N,R52W Logan County, Colorado  
License Number: 05075-09411 Region: West Peetz  
Spud Date: 10/01/2012 Drilling Completed: 10/05/2012  
Surface Coordinates: 283' FNL, 2275' FEL  
Bottom Hole 283' FNL, 2275' FEL  
Coordinates:  
Ground Elevation (ft): 4546' K.B. Elevation (ft): 4558'  
Logged Interval (ft): 1230' To: 5265' Total Depth (ft): 5265'  
Formation: Dakota D Sandstone.  
Type of Drilling Fluid: WBM

Printed by MUD.LOG from WellSight Systems 1-800-447-1534 www.WellSight.co n



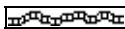
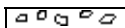
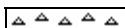
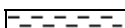

#### OPERATOR







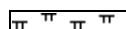
Company: East Cheyenne Gas Storage LLC.  
Address: 10901 W. Toller Dr. Suite 200  
Littleton, CO. 80127

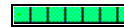
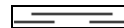



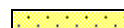

#### GEOLOGIST

Name: Leo Carrasco  
Company: Decollement Consulting, Inc  
Address: 13300 Braun Rd.  
Golden, CO 80401

#### ROCK TYPES

 Cmt  
 Anhy  
 Bent  
 Brec  
 Cht  
 Clyst  
 Coal

 Congl  
 Dol  
 Gyp  
 Igne  
 Lmst  
 Meta  
 Mrlst

 Salt  
 Shale  
 Shcol  
 Shgy  
 Sltst  
 Ss  
 Till

 Sh--green  
 Sh red-brn  
 Sh gy-red  
 Shgy  
 Sltst--gray  
 Sltst-gy red

## ACCESSORIES

### MINERAL

Anhy  
 Arggrn  
 Arg  
 Bent  
 Bit  
 Brecfrag  
 Calc  
 Carb  
 Chtdk  
 Chtlt  
 Dol  
 Feldspar  
 Ferrpel  
 Ferr  
 Glau  
 Gyp  
 Hvymin  
 Kaol  
 Marl

Minxl  
 Nodule  
 Phos  
 Pyr  
 Salt  
 Sandy  
 Silt  
 Sil  
 Sulphur  
 Tuff

### FOSSIL

Algae  
 Amph  
 Belm  
 Bioclst  
 Brach  
 Bryozoa  
 Cephal  
 Coral

Crin  
 Echin  
 Fish  
 Foram  
 Fossil  
 Gastro  
 Oolite  
 Ostra  
 Pelec  
 Pellet  
 Pisolite  
 Plant  
 Strom

### STRINGER

Anhy  
 Arg  
 Bent  
 Coal  
 Dol

Gyp  
 Ls  
 Mrst  
 Sltstrg  
 Ssstrg

### TEXTURE

Boundst  
 Chalky  
 Cryxln  
 Earthy  
 Finexln  
 Grainst  
 Lithogr  
 Microxln  
 Mudst  
 Packst  
 Wackest

## OTHER SYMBOLS

### POROSITY

Earthy  
 Fenest  
 Fracture  
 Inter  
 Moldic  
 Organic  
 Pinpoint  
 Vuggy  
 Csg shoe right

Csg shoe left  
 Cmt

### SORTING

Well  
 Moderate  
 Poor

### ROUNDING

Rounded

Subrnd  
 Subang  
 Angular

### OIL SHOW

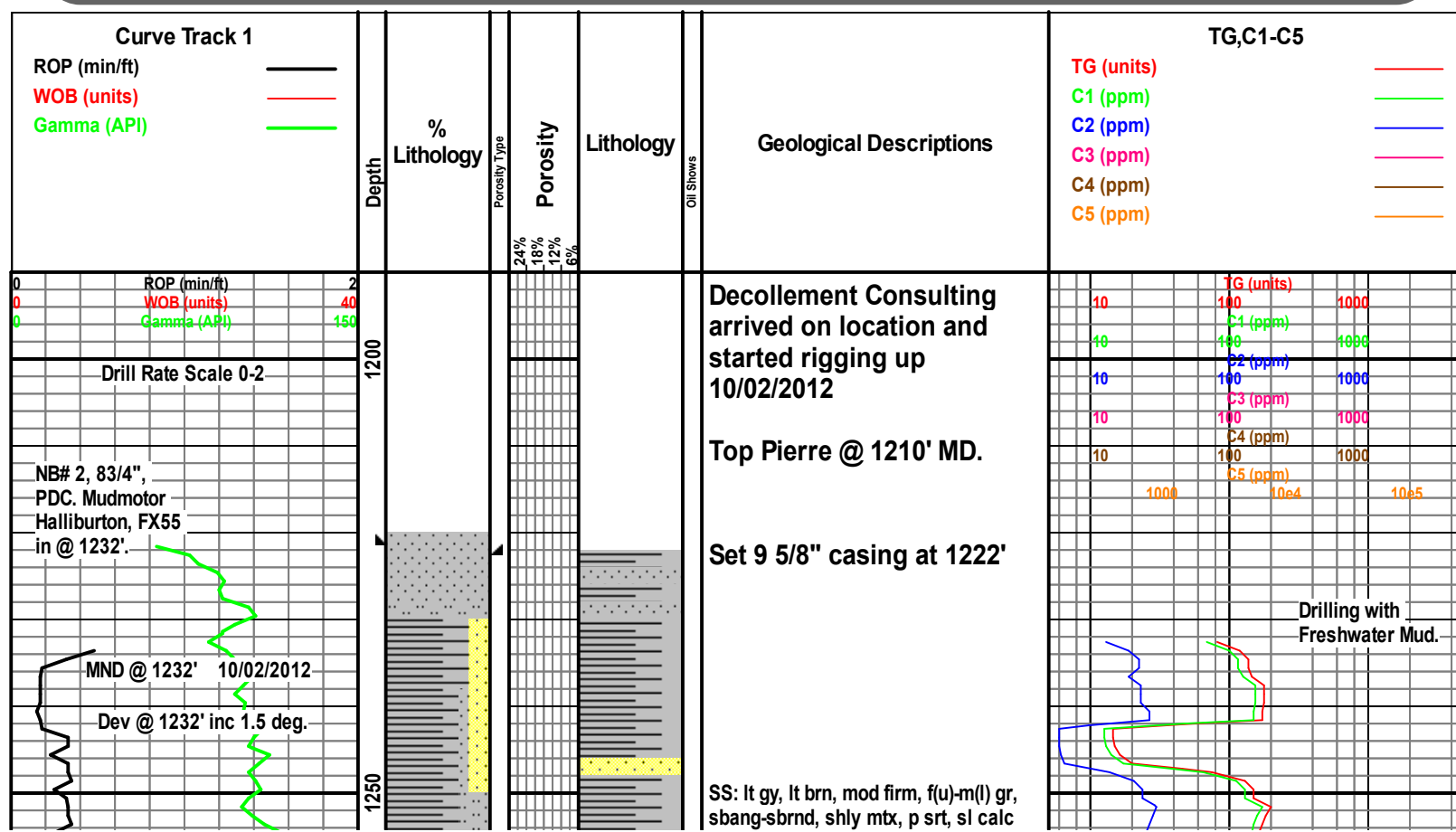
Even  
 Spotted  
 Ques  
 Dead

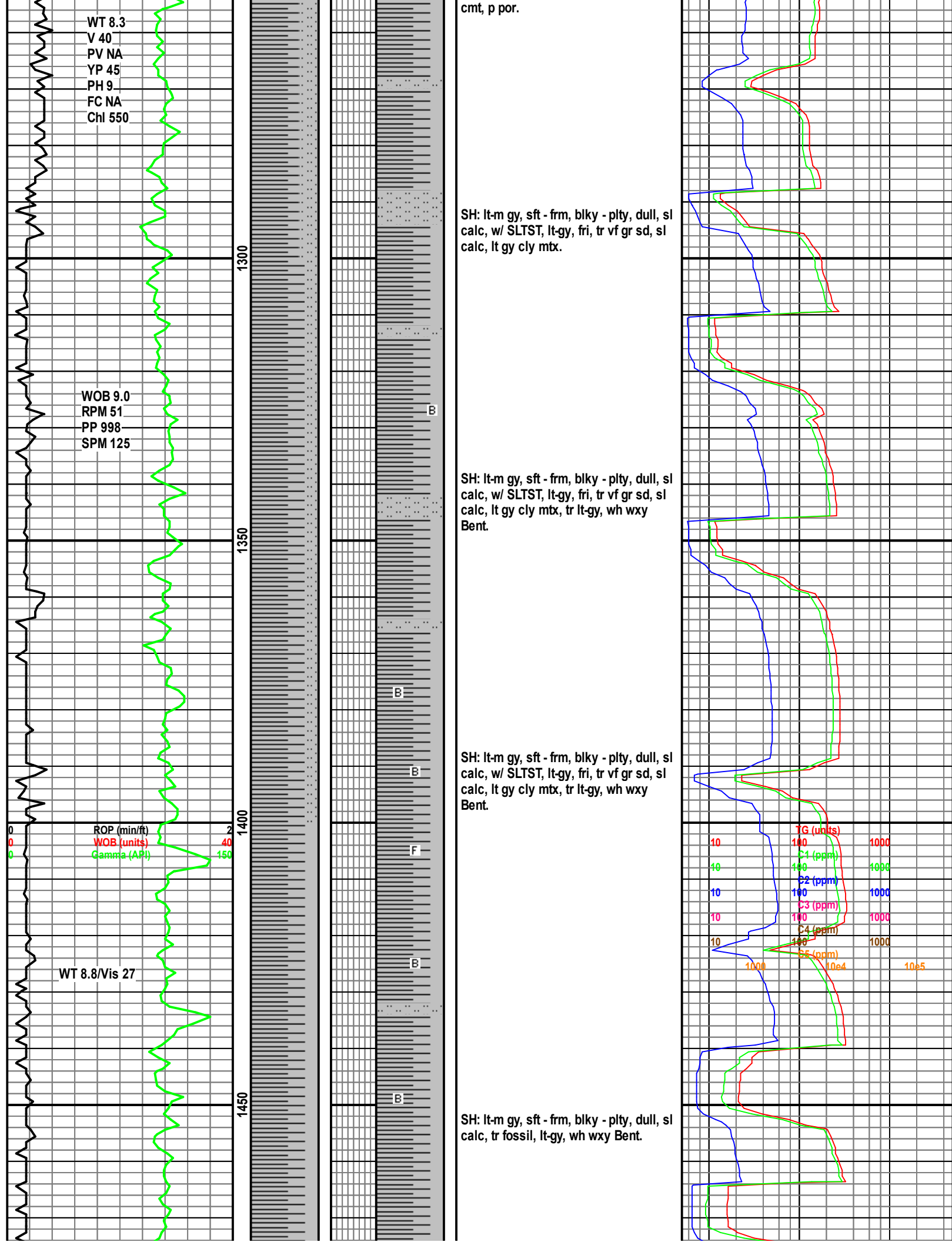
### INTERVAL

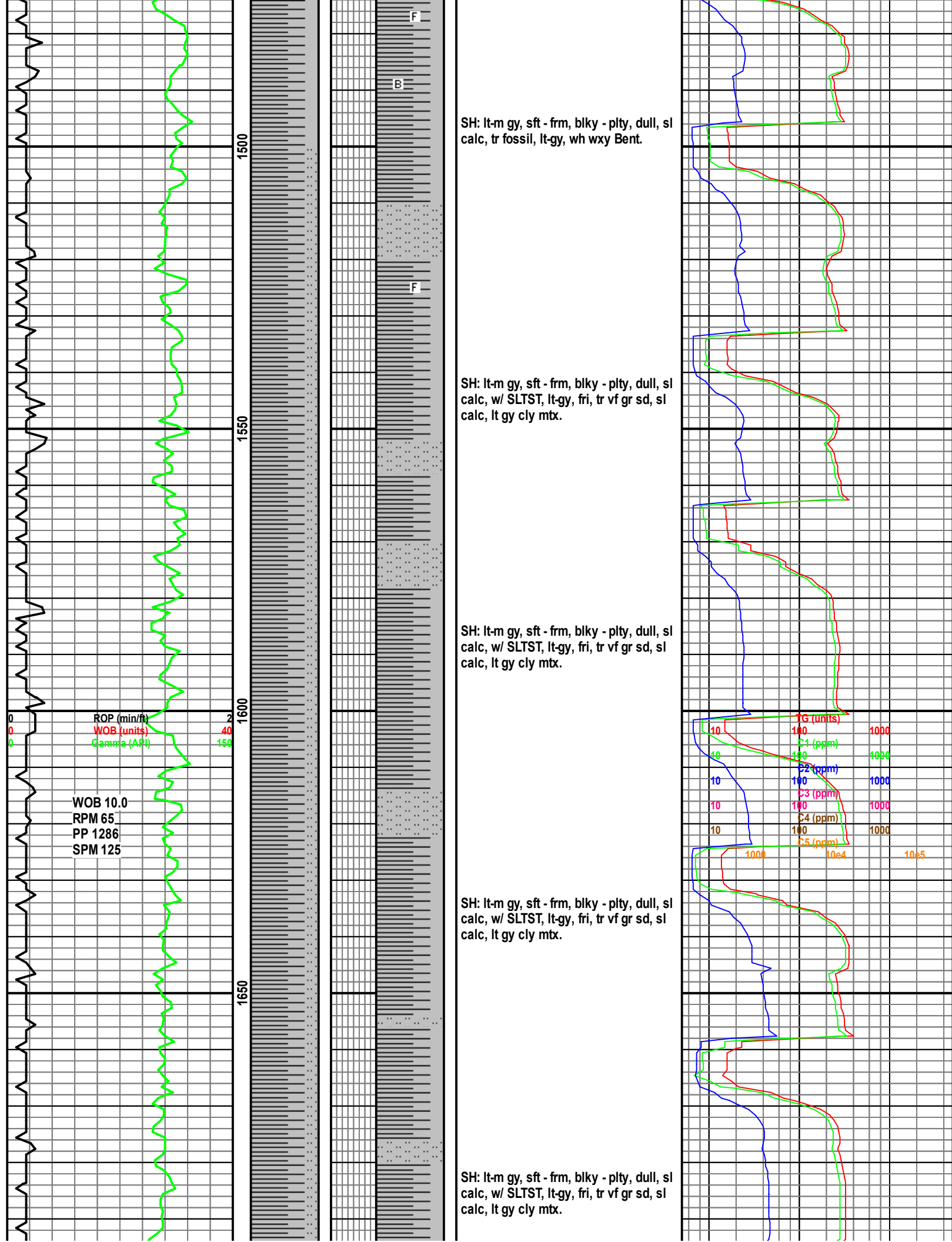
Core  
 Dst

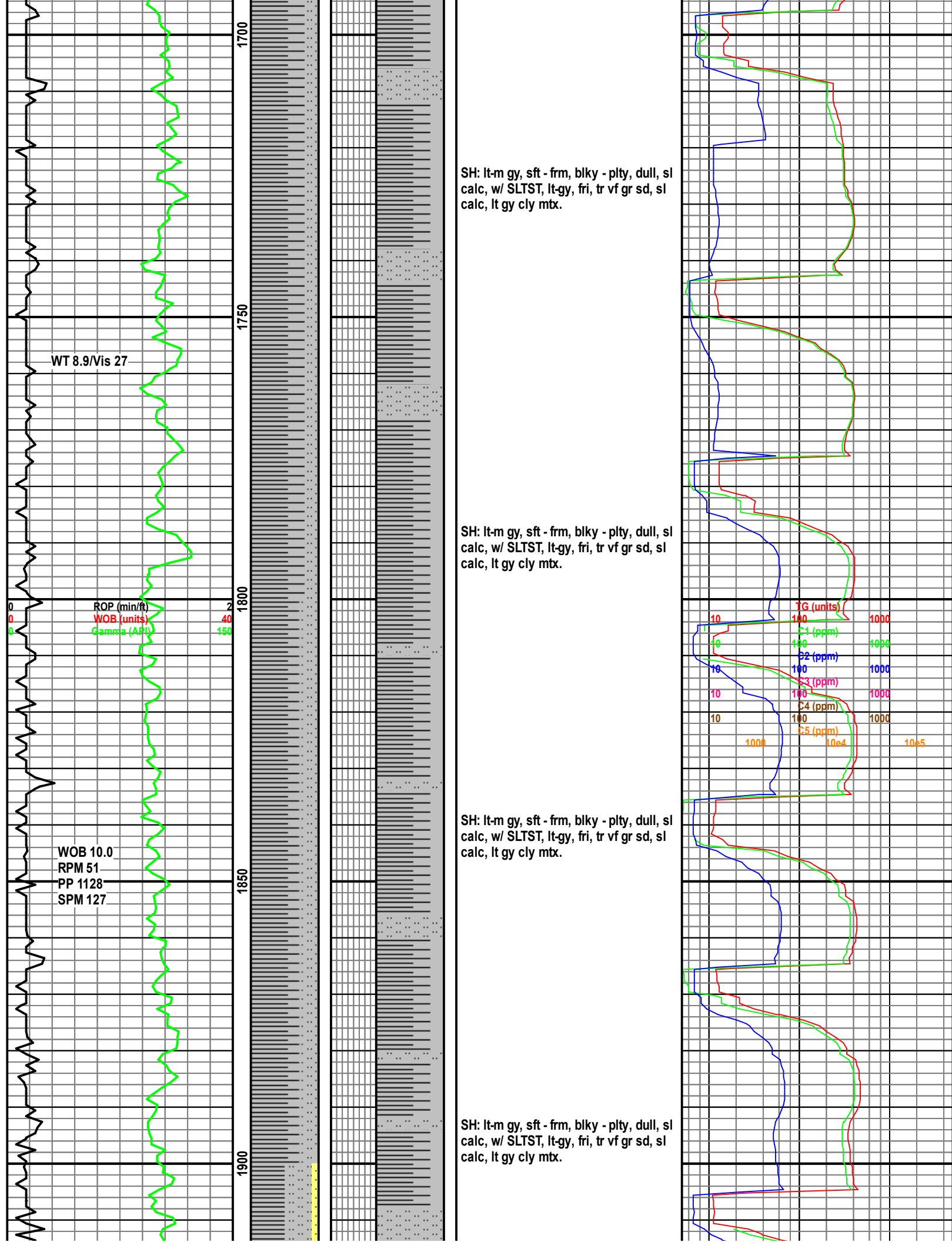
### EVENT

Csg shoe right  
 Csg shoe left  
 Rft  
 Sidewall  
 Iso-tube

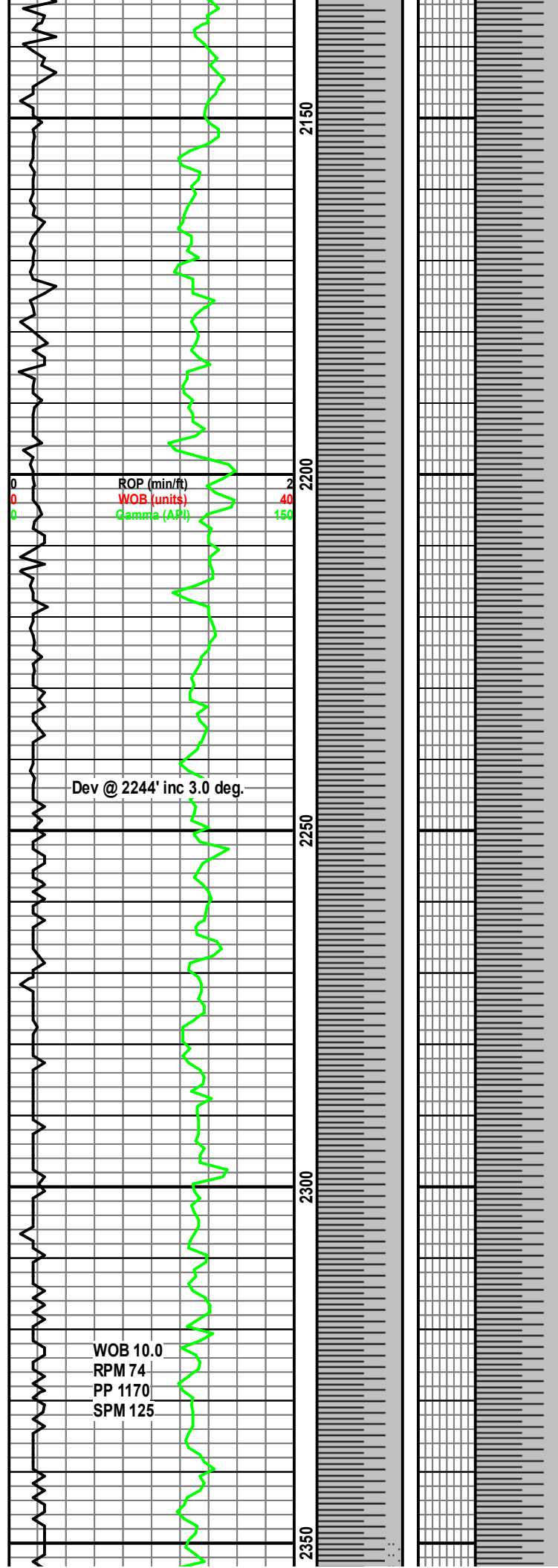












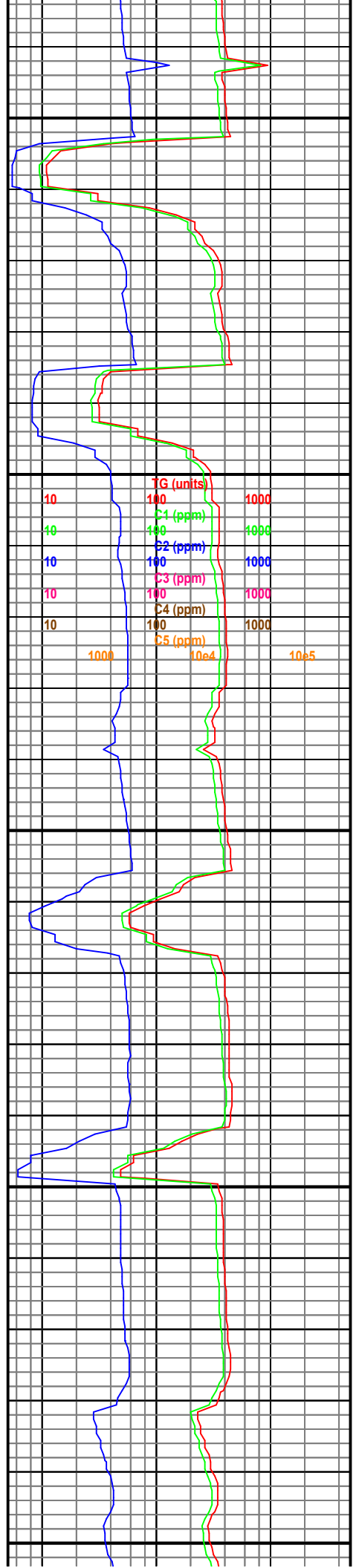
SH: It-m gy, sft - frm, blk - plty, dull, sl-v calc.

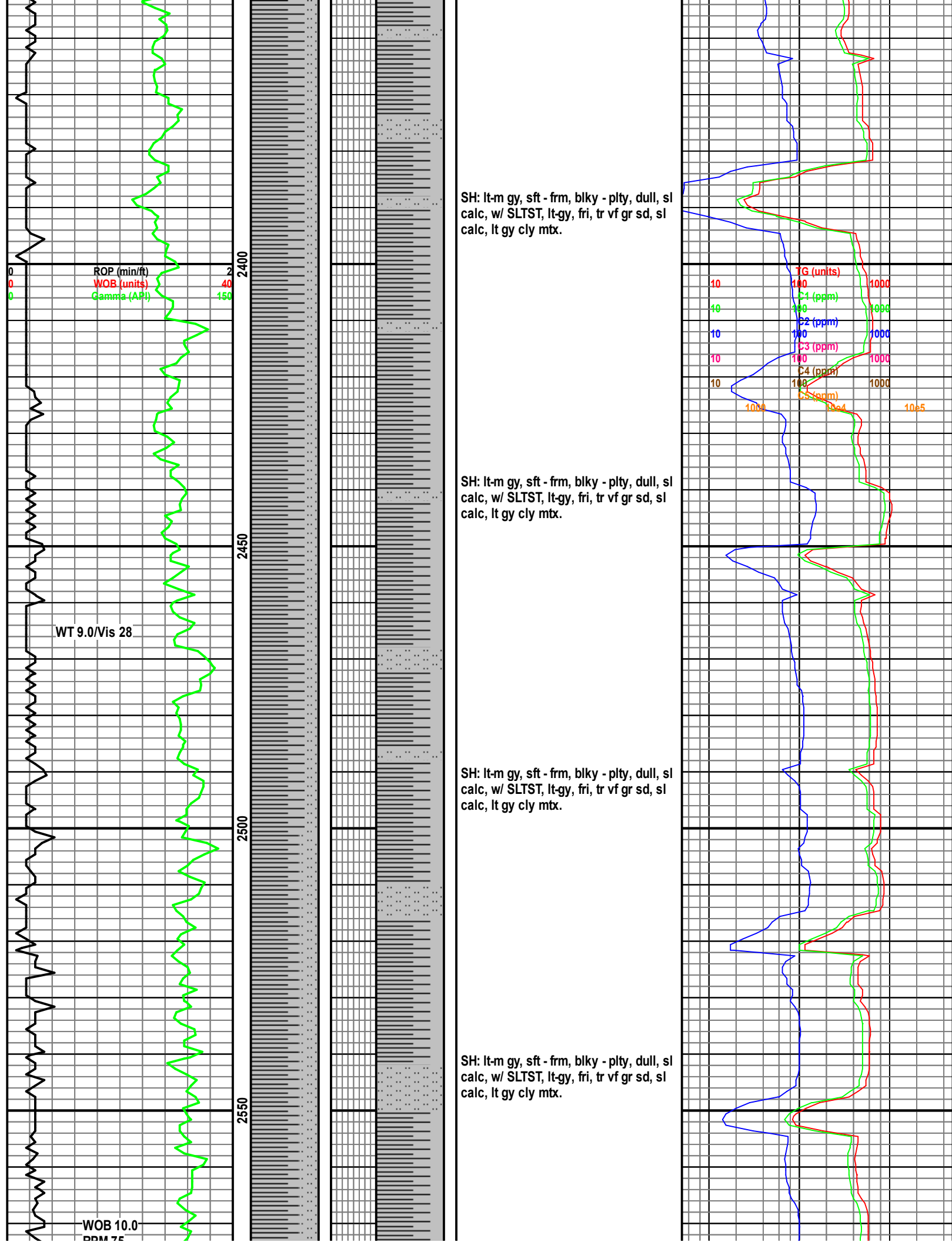
SH: It-m gy, sft - frm, blk - plty, dull, sl-v calc.

SH: It-m gy, sft - frm, blk - plty, dull, sl-v calc.

SH: It-m gy, sft - frm, blk - plty, dull, sl-v calc.

SH: It-m gy, sft - frm, blk - plty, dull, sl-v calc.







RPM 75  
PP 1120  
SPM 125

ROP (min/ft)  
WOB (units)  
Gamma (API)

2600

2650

2700

2750

MND @ 2750' 10/04/2012

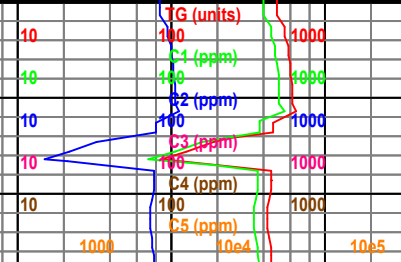
SH: lt-m gy, sft - frm, blk - plty, dull, sl  
calc, w/ SLTST, lt-gy, fri, tr vf gr sd, sl  
calc, lt gy cly mtx.

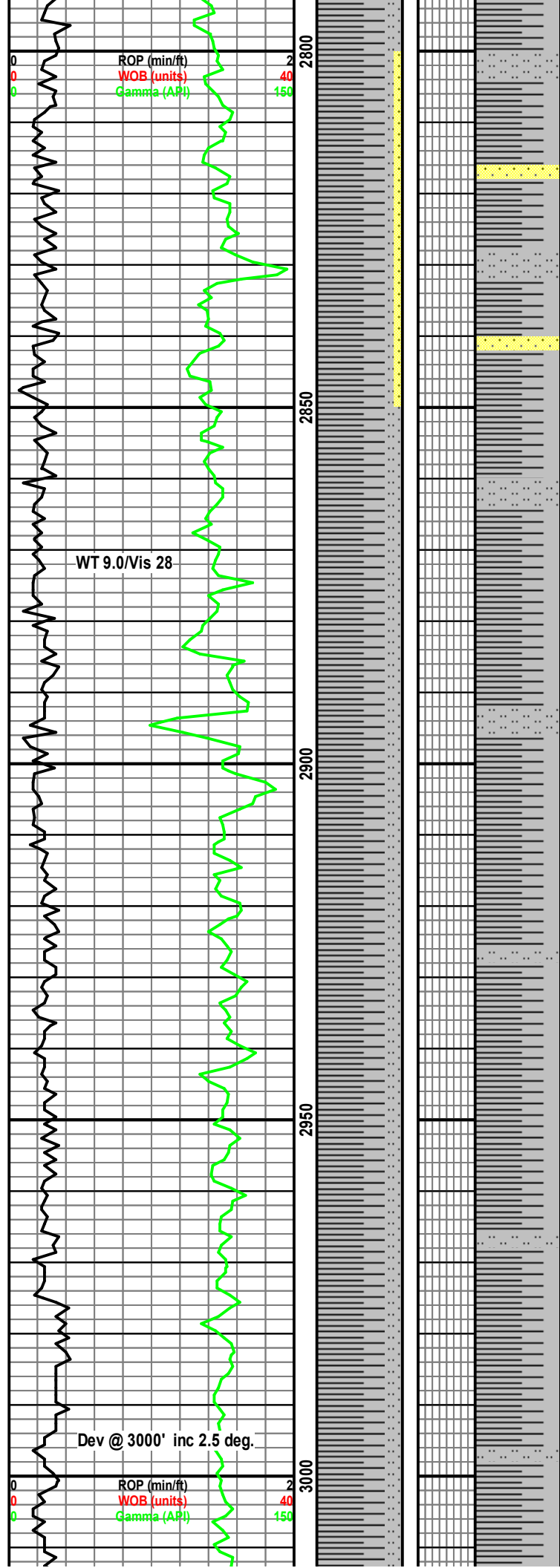
SH: lt-m gy, sft - frm, blk - plty, dull, sl  
calc, w/ SLTST, lt-gy, fri, tr vf gr sd, sl  
calc, lt gy cly mtx.

SH: m gy, frm, blk - plty, dull, sl calc,  
intb w/ SS, lt gy, mod firm, fri ip, vf(u)-  
f(l) gr, sbang-sbrnd, shly mtx, mod srt,  
sl calc cmt, p.

SH: m gy, frm, blk - plty, dull, sl calc,  
intb w/ SS, lt gy, mod firm, fri ip, vf(u)-  
f(l) gr, sbang-sbrnd, shly mtx, mod srt,  
sl calc cmt, p.

SH: lt-m gy, sft - frm, blk - plty, dull, sl  
calc, w/ SLTST, lt-gy, fri, tr vf gr sd, sl





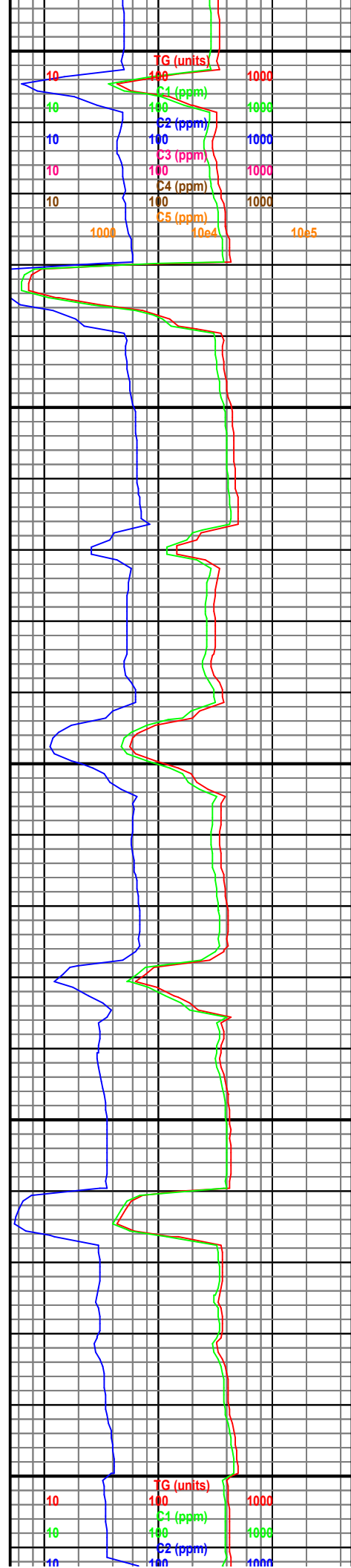
calc, lt gy cly mtx.

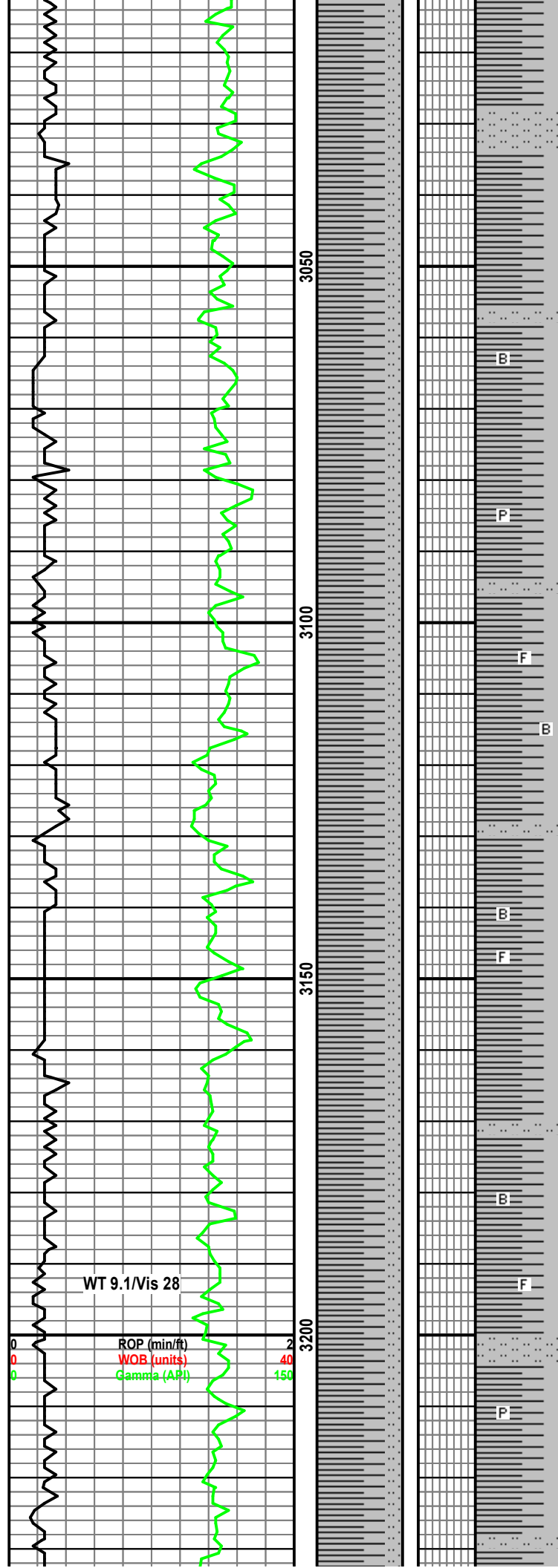
SH: m gy, frm, blk - plty, dull, sl calc, intb w/ SS, lt gy, mod firm, fri ip, vf(u)-f(l) gr, sbang- sbrnd, shly mtx, mod srt, sl calc cmt, p.

SH: lt-m gy, sft - frm, blk - plty, dull, sl calc, w/ SLTST, lt-gy, fri, tr vf gr sd, sl calc, lt gy cly mtx.

SH: lt-m gy, sft - frm, blk - plty, dull, sl calc, w/ SLTST, lt-gy, fri, tr vf gr sd, sl calc, lt gy cly mtx.

SH: lt-m gy, sft - frm, blk - plty, dull, sl calc, w/ SLTST, lt-gy, fri, tr vf gr sd, sl calc, lt gy cly mtx.

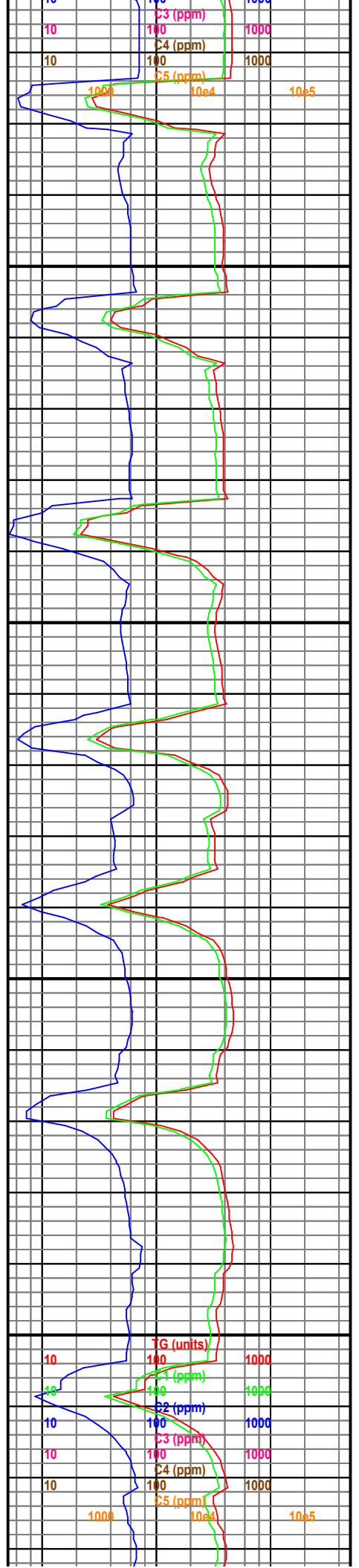




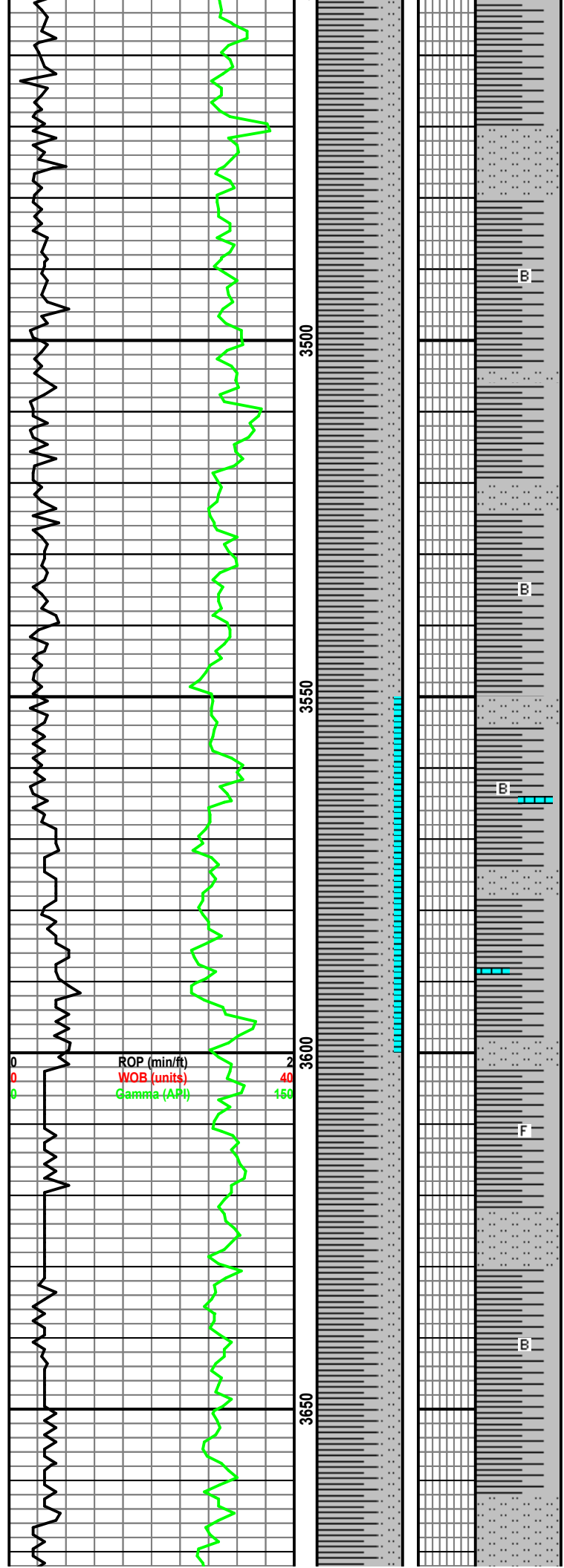
SH: lt-m gy, sft - frm, blk - plty, dull, sl  
calc, w/ SLTST, lt-gy, fri, tr vf gr sd, sl  
calc, lt gy cly mtx.

SH: lt-m gy, sft - frm, blk - plty, dull, sl  
calc, w/ SLTST, lt-gy, fri, tr vf gr sd, sl  
calc, lt gy cly mtx, tr lt-gy, wh wxy  
Bent, tr pry.

SH: lt-m gy, sft - frm, blk - plty, dull, sl  
calc, w/ SLTST, lt-gy, fri, tr vf gr sd, sl  
calc, lt gy cly mtx, tr lt-gy, wh wxy  
Bent, tr pry.







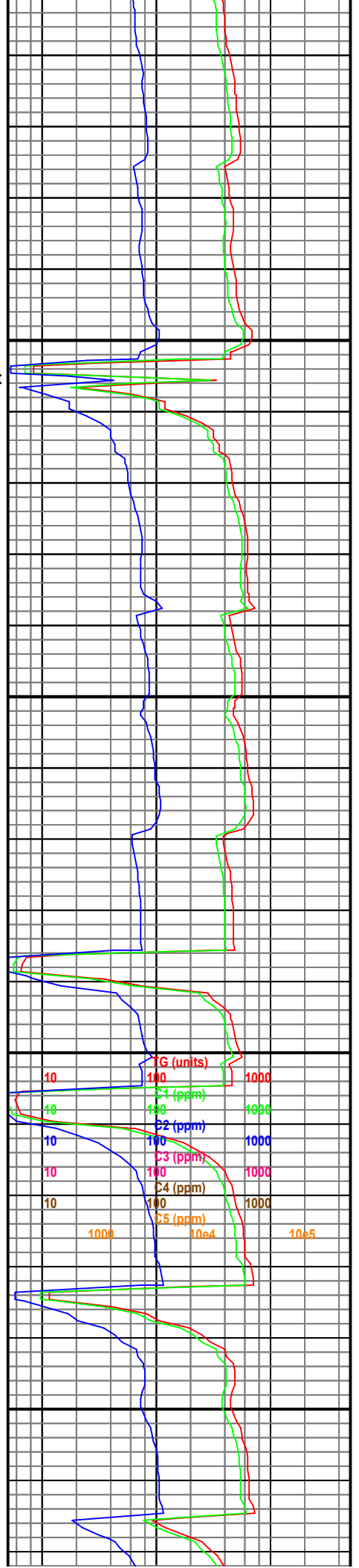
Bent, tr pry.

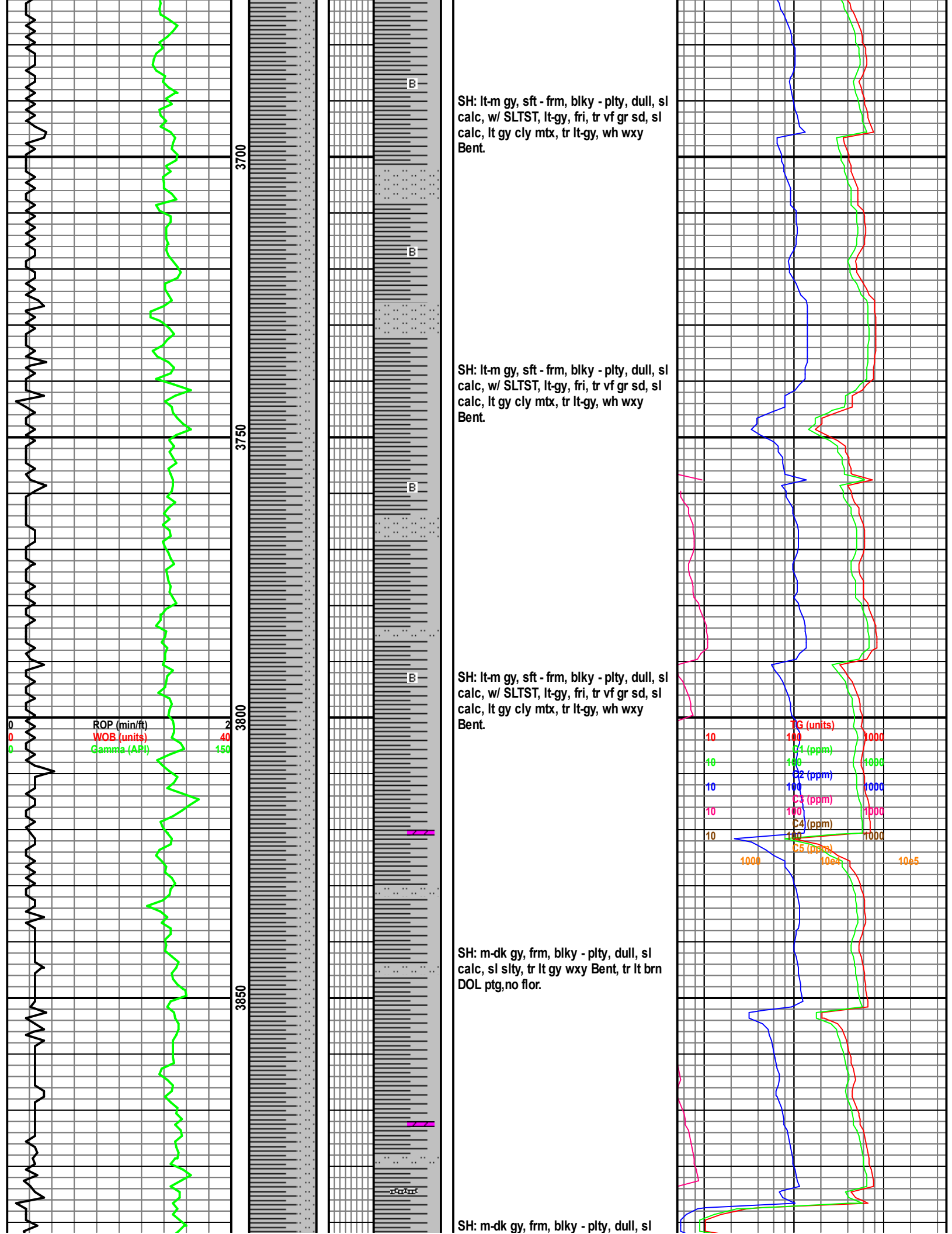
SH: lt-m gy, sft - frm, blk-y - plty, dull, sl  
calc, w/ SLTST, lt-gy, fri, tr vf gr sd, sl  
calc, lt gy cly mtx, tr lt-gy, wh wxy Bent

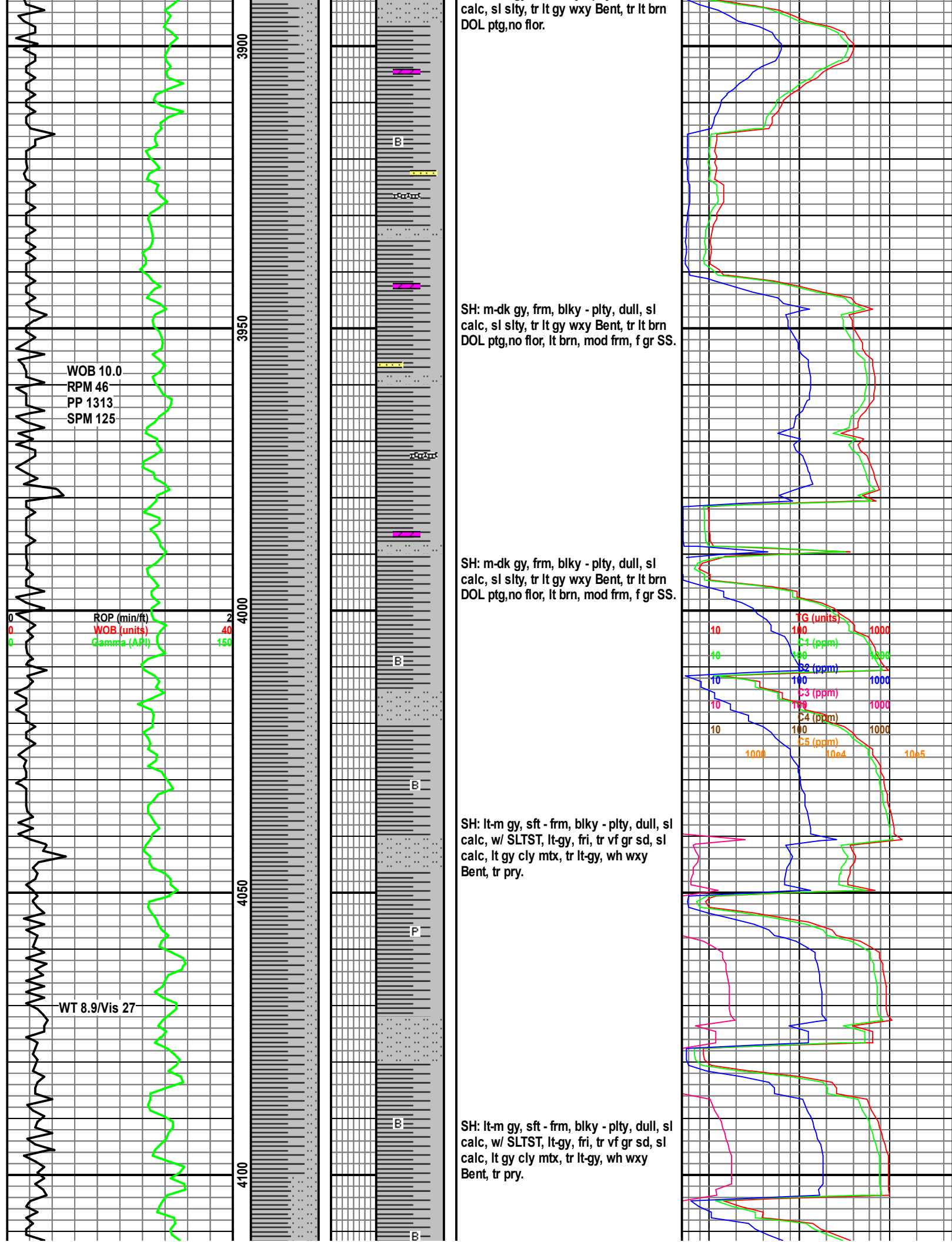
SH: lt-m gy, sft - frm, blk-y - plty, dull, sl  
calc, w/ SLTST, lt-gy, fri, tr vf gr sd, sl  
calc, lt gy cly mtx, tr lt-gy, wh wxy  
Bent.

SH: lt-m gy, sft - frm, blk-y - plty, dull, sl  
calc, w/ SLTST, lt-gy, fri, tr vf gr sd, sl  
calc, lt gy cly mtx, tr lt-gy, wh wxy  
Bent, tr pry, lt brn, frm, micx, String LS.

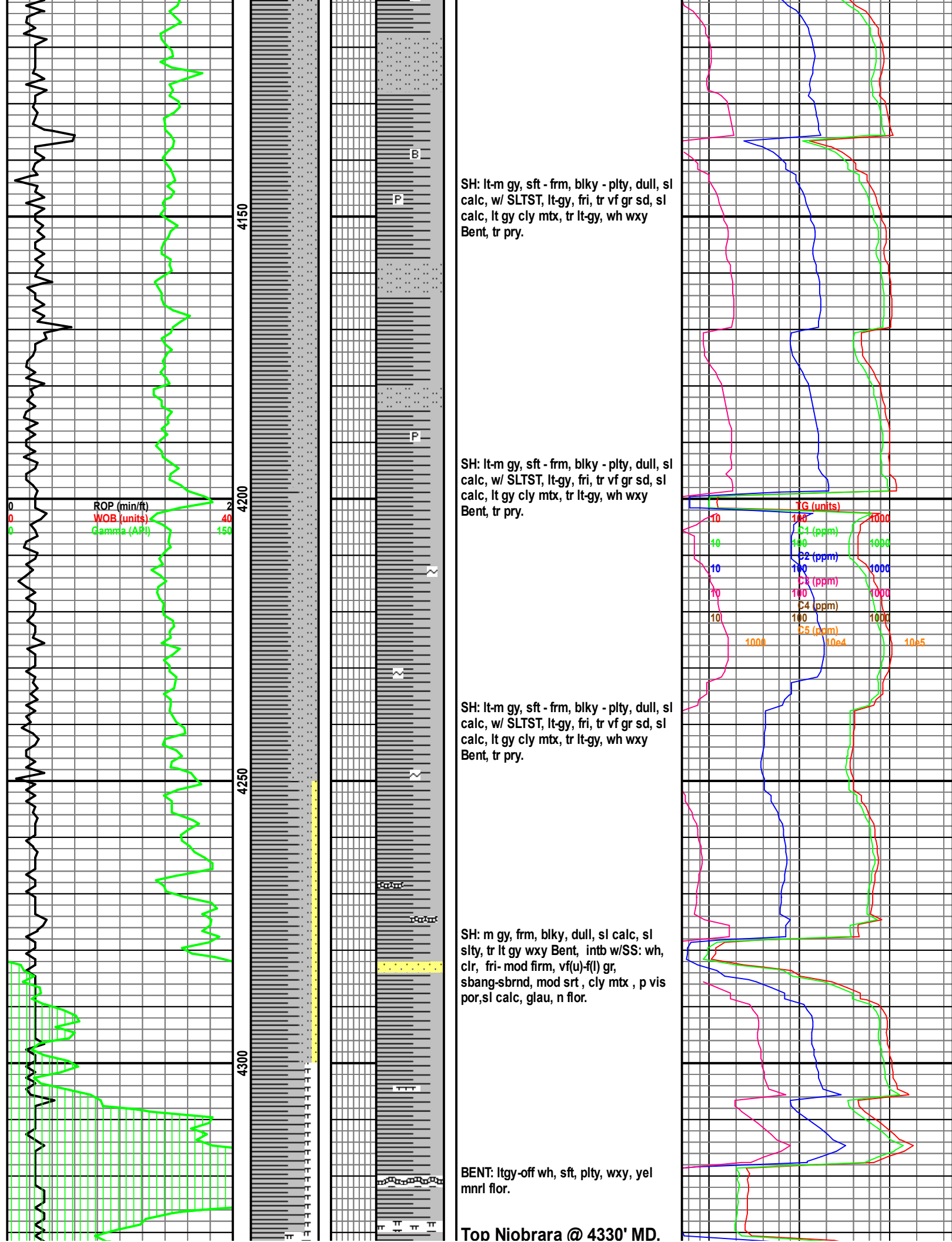
SH: lt-m gy, sft - frm, blk-y - plty, dull, sl  
calc, w/ SLTST, lt-gy, fri, tr vf gr sd, sl  
calc, lt gy cly mtx, tr lt-gy, wh wxy  
Bent.



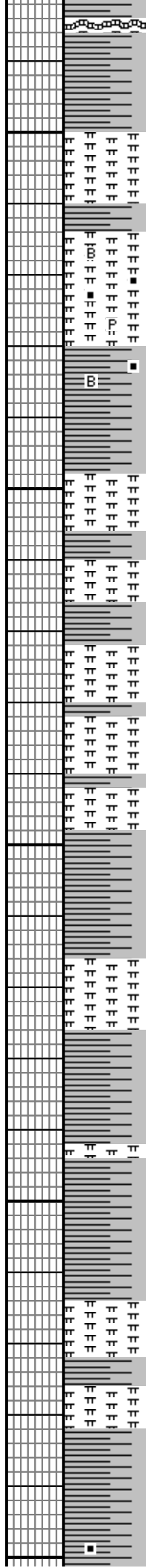
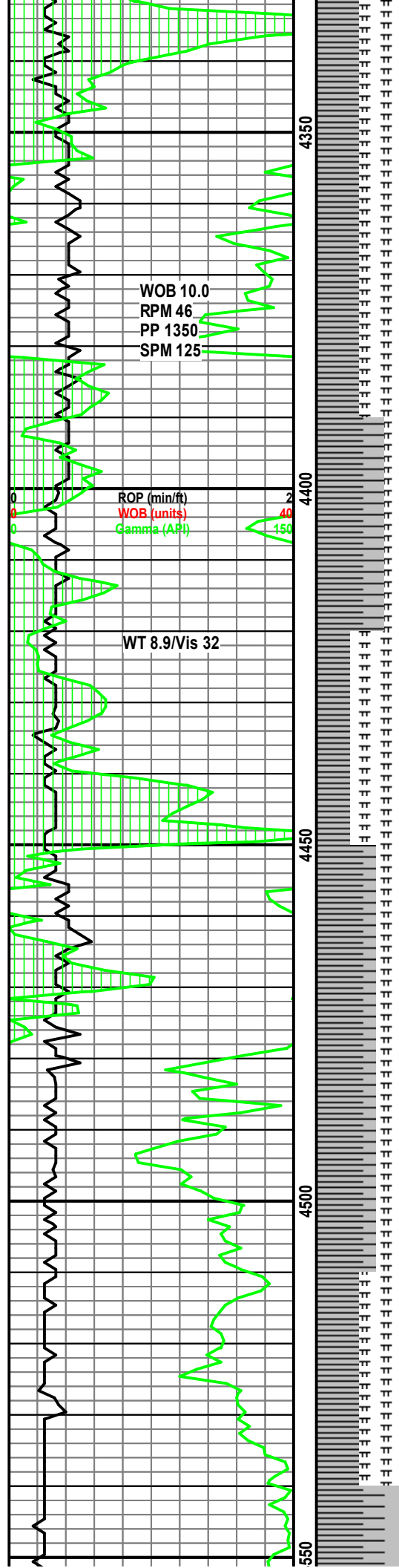












Chalky Marlst: lt gybrn, wh specs, frm, sb blk, calc, chlky tex, carb mat, pyr, no vis por, no flor, slow pale wh cut.

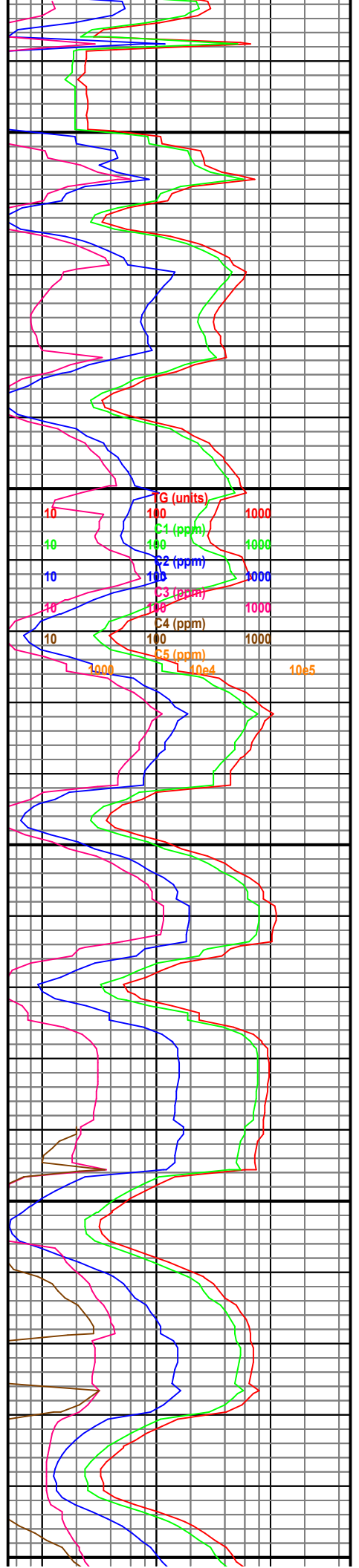
MARLST: ltgy, lt gy, specs & mot specs, frm, chlky, calc, wispy carb mat, pyr, no vis por, no flor, mod wh cut, wh resd ring.

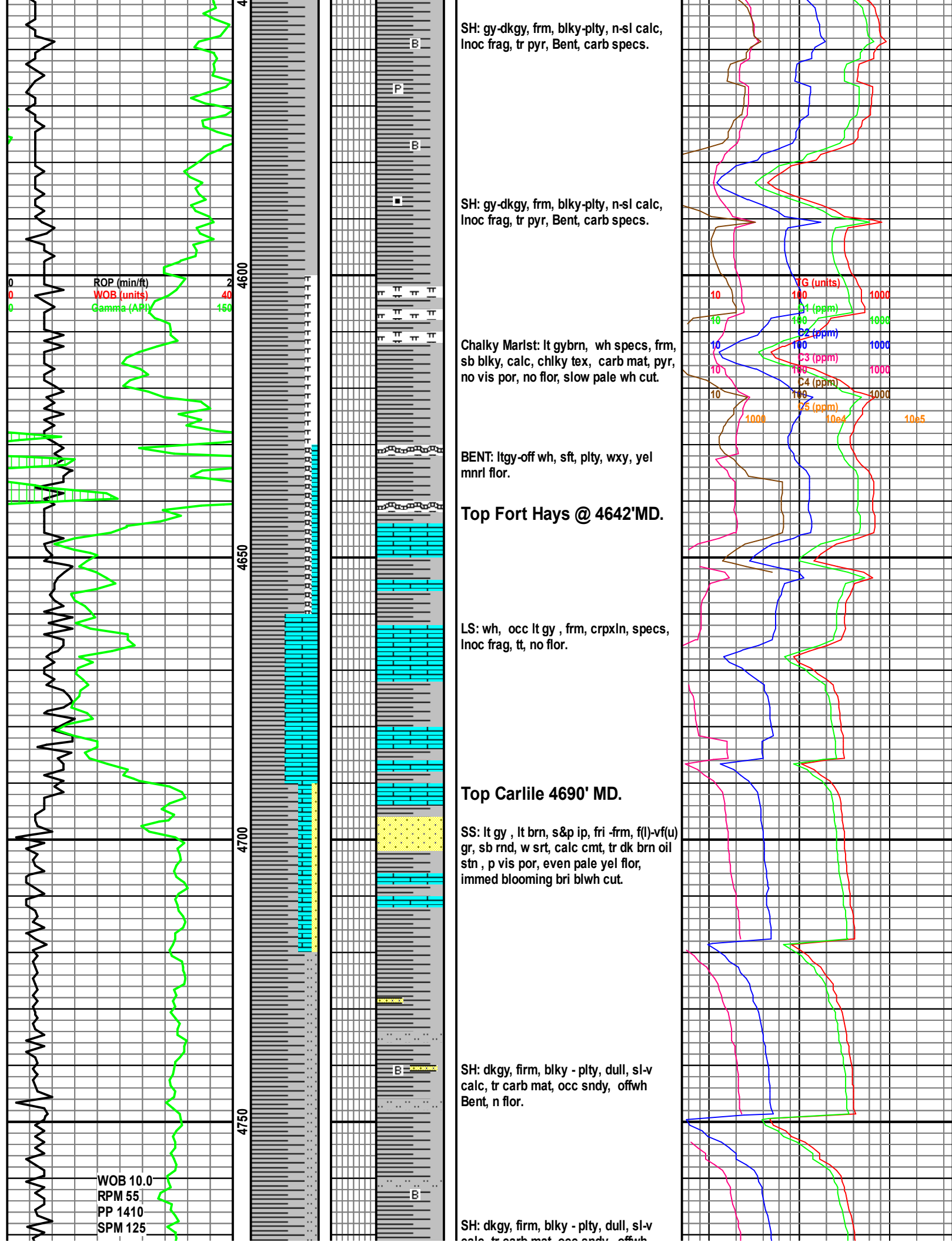
SH: dk gy, blk, blk, blk-pty, mod calc, carb specs, tr pyr, tr Bent, no flor, occ fnt wh cut.

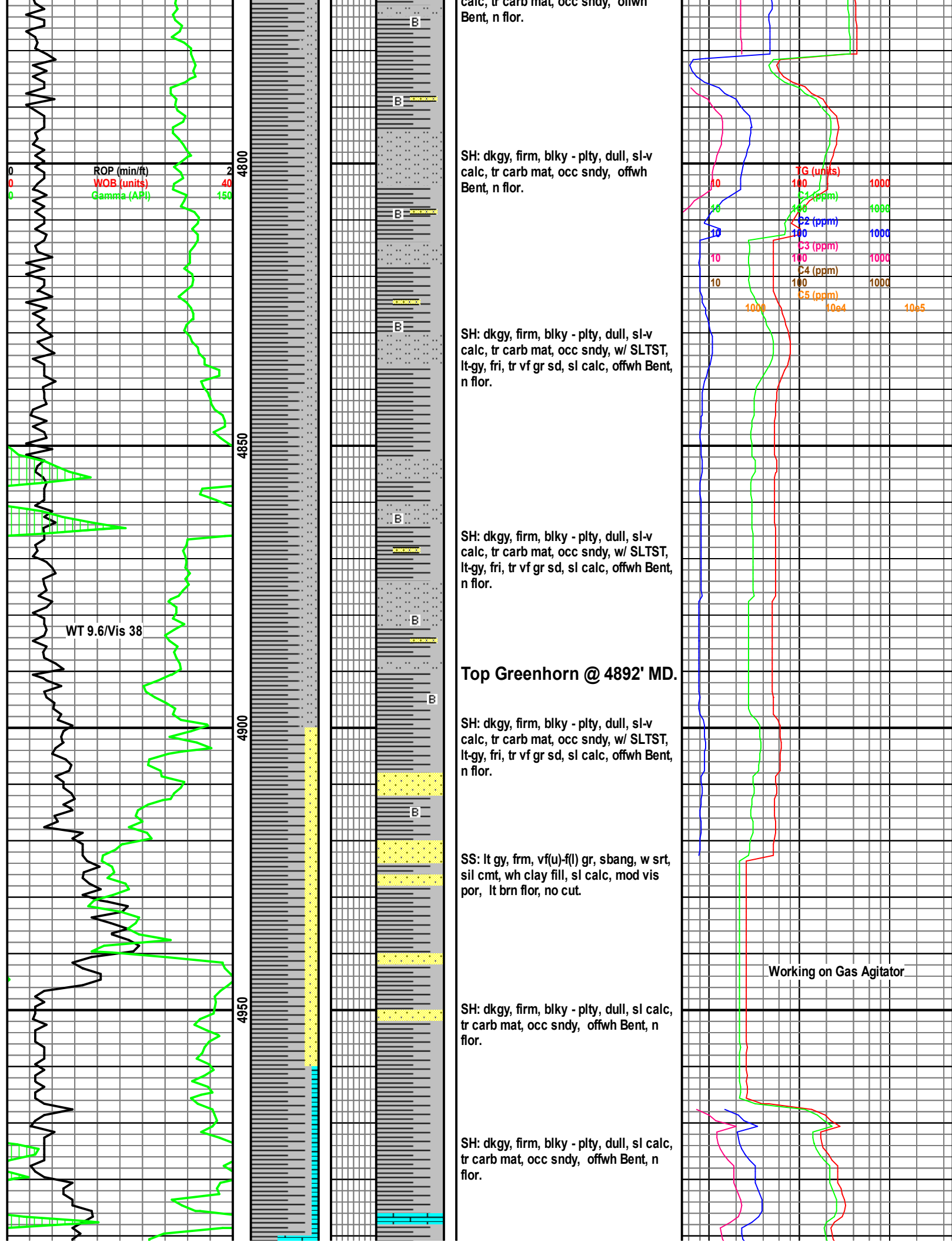
MARLST: ltgy, lt gy, specs & mot specs, frm, chlky, calc, wispy carb mat, pyr, no vis por, no flor, mod wh cut, wh resd ring.

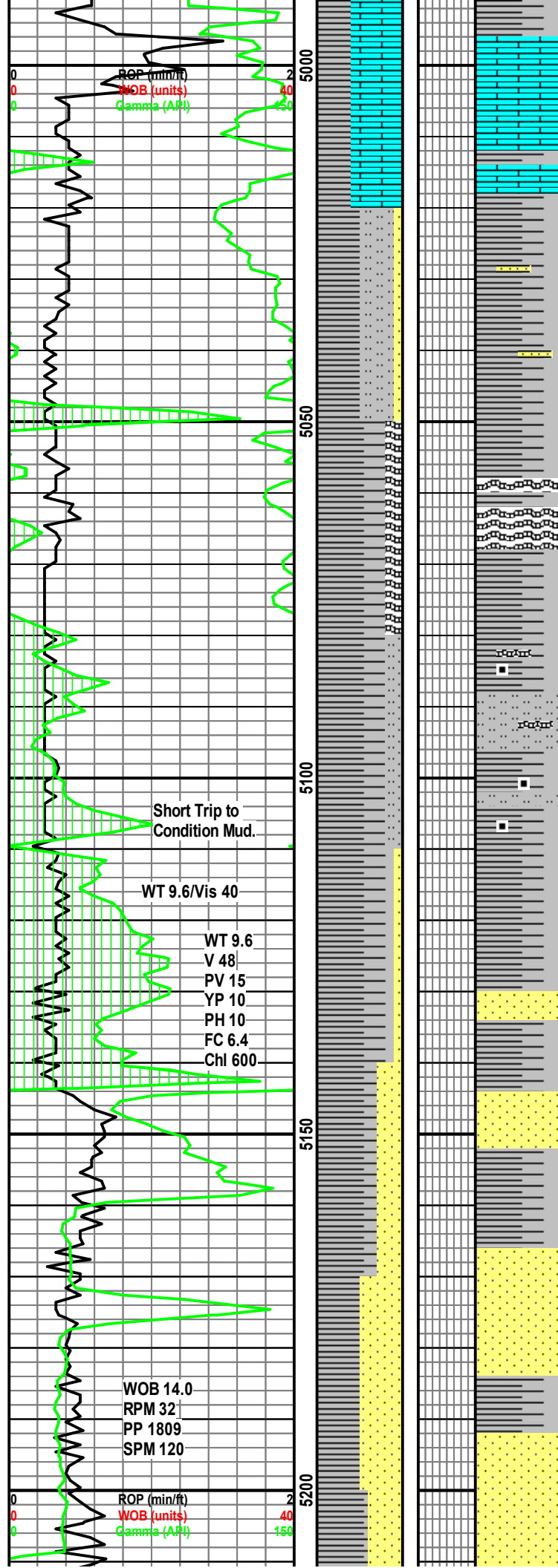
Chalky Marlst: lt gybrn, wh specs, frm, sb blk, calc, chlky tex, carb mat, pyr, no vis por, no flor, slow pale wh cut.

MARLST: ltgy, lt gy, specs & mot specs, frm, chlky, calc, wispy carb mat, pyr, no vis por, no flor, mod wh cut, wh resd ring.









LS: ltbrn - brn, gybrn, occ lt gy specs, crpxln, inoc frag, tt.

### Top Graneros Shale X-Bentonite 5050' MD.

BENT: ltgy-off wh, sft, plty, wxy, yel mnrl flr

SH: dkgy, frm, blk - plty, dull, sl-v calc, tr carb mat, occ sndy, abnt offwh Bent, n flr.

SS: wh, lt brn ip, frm, f(l) gr, sbrnd, w srt, sil cmt, wh clay fill, sl calc, mod vis por, tr Bentonite, tr pry, ptchy bri yel flr, slow strmg wh cuts from lt brn.

### Top Dakota D1 @ 5145' MD

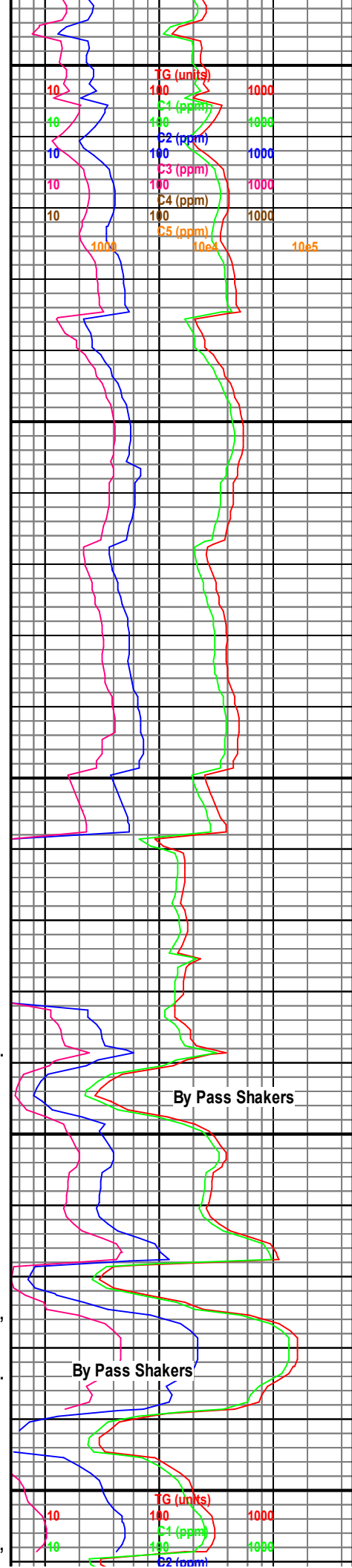
### Top Dakota D2 @ 5160' MD

### Top Dakota D3 @ 5176' MD

SS: wh, lt brn ip, frm, vf(u)-f(l) gr, sbrnd, w srt, sil cmt, wh clay fill, sl calc, mod vis por, tr Bentonite, tr pry, ptchy bri yel flr, slow strmg wh cuts from lt brn.

### Top Huntsman @ 5203' MD

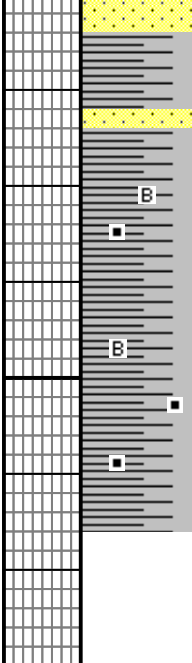
SS: wh, lt brn ip, frm, vf(u)-f(l) gr, sbrnd, w srt, sil cmt, wh clay fill, sl calc, mod





TD @ 5265' 10/05/2012  
07:50 am.

5250



w str, sh cnt, wh clay int, sl calc, mod  
vis por, tr Bentonite, tr pry, ptchy bri  
yel flor, slow strmg wh cuts from lt brn .

SH: dkgy, firm, blkly - plty, dull, sl calc,  
tr carb mat, tr offwh Bent.

SH: dkgy, firm, blkly - plty, dull, sl calc,  
tr carb mat, tr offwh Bent.

