

Décollement
Consulting
Inc.



Scale 1:240 (5"=100') Imperial
Measured Depth Log

Well Name: ECGS # 6-18 WPD011-2
Location: NE/SE Sec.6,T11N,R52W Logan County, Colorado
License Number: 05-075-09406
Spud Date: 10/08/2012
Surface Coordinates: 2372' FSL, 1559' FEL
Region: West Peetz
Drilling Completed: 10/11/2012
Bottom Hole Coordinates: 2372' FSL, 1559' FEL
Ground Elevation (ft): 4550' K.B. Elevation (ft): 4562'
Logged Interval (ft): 100' To: 5260' Total Depth (ft): 5260'
Formation: Dakota D Sandstone.
Type of Drilling Fluid: WBM

Printed by MUD.LOG from WellSight Systems 1-800-447-1534 www.WellSight.co



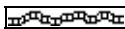
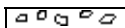
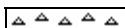
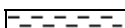

OPERATOR







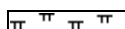
Company: East Cheyenne Gas Storage LLC.
Address: 10901 W. Toller Dr. Suite 200
Littleton, CO. 80127

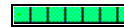
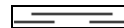



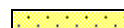

GEOLOGIST

Name: Leo Carrasco
Company: Decollement Consulting, Inc
Address: 13300 Braun Rd.
Golden, CO 80401

ROCK TYPES

 Cmt
 Anhy
 Bent
 Brec
 Cht
 Clyst
 Coal

 Congl
 Dol
 Gyp
 Igne
 Lmst
 Meta
 Mrlst

 Salt
 Shale
 Shcol
 Shgy
 Sltst
 Ss
 Till

 Sh--green
 Sh red-brn
 Sh gy-red
 Shgy
 Sltst--gray
 Sltst-gy red

ACCESSORIES

MINERAL

Anhy
 Arggrn
 Arg
 Bent
 Bit
 Brecfrag
 Calc
 Carb
 Chtdk
 Chtlt
 Dol
 Feldspar
 Ferrpel
 Ferr
 Glau
 Gyp
 Hvymin
 Kaol
 Marl

Minxl
 Nodule
 Phos
 Pyr
 Salt
 Sandy
 Silt
 Sil
 Sulphur
 Tuff

FOSSIL

Algae
 Amph
 Belm
 Bioclst
 Brach
 Bryozoa
 Cephal
 Coral

Crin
 Echin
 Fish
 Foram
 Fossil
 Gastro
 Oolite
 Ostra
 Pelec
 Pellet
 Pisolite
 Plant
 Strom

STRINGER

Anhy
 Arg
 Bent
 Coal
 Dol

Gyp
 Ls
 Mrst
 Sltstrg
 Ssstrg

TEXTURE

Boundst
 Chalky
 Cryxln
 Earthy
 Finexln
 Grainst
 Lithogr
 Microxln
 Mudst
 Packst
 Wackest

OTHER SYMBOLS

POROSITY

Earthy
 Fenest
 Fracture
 Inter
 Moldic
 Organic
 Pinpoint
 Vuggy
 Csg shoe right

Csg shoe left
 Cmt

SORTING

Well
 Moderate
 Poor

ROUNDING

Rounded

Subrnd
 Subang
 Angular

OIL SHOW

Even
 Spotted
 Ques
 Dead

INTERVAL

Core
 Dst

EVENT

Csg shoe right
 Csg shoe left
 Rft
 Sidewall
 Iso-tube

Curve Track 1

ROP (min/ft) ———
 WOB (units) ———
 Gamma (API) ———

Depth

%
Lithology

Porosity Type
Porosity

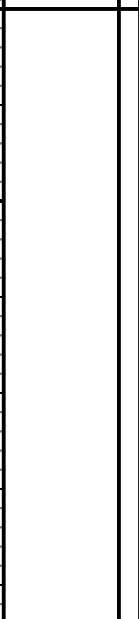
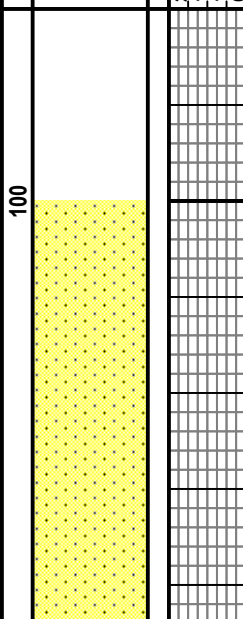
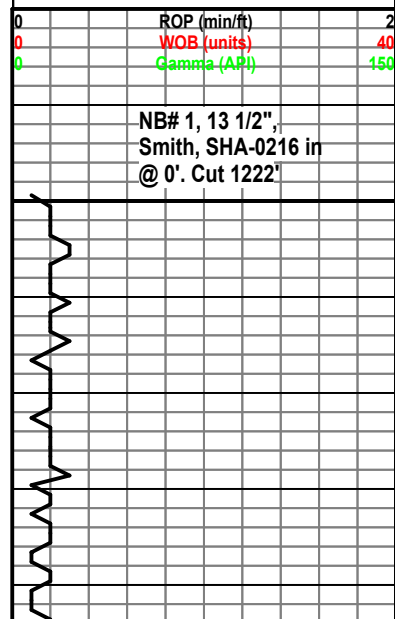
Lithology

Oil Shows

Geological Descriptions

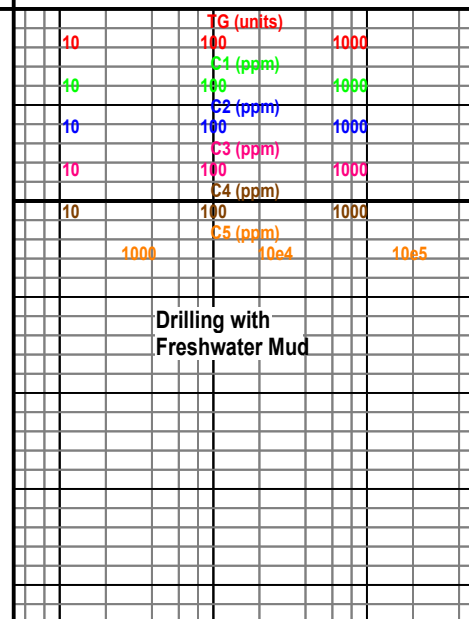
TG,C1-C5

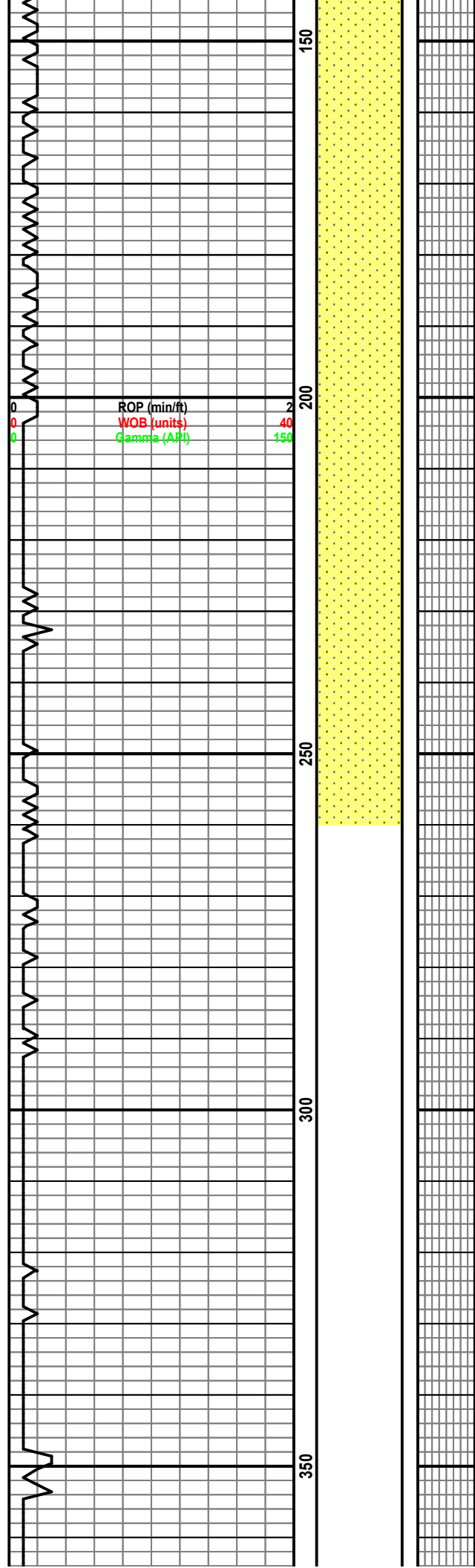
TG (units) ———
 C1 (ppm) ———
 C2 (ppm) ———
 C3 (ppm) ———
 C4 (ppm) ———
 C5 (ppm) ———



Decollement Consulting
 arrived on location and
 started rigging up
 10/08/2012

SS: pred qtzxl, wh, orng, fria, c(l)-c(u),
 sbrnd-sbang, sl cal, arg mtx.





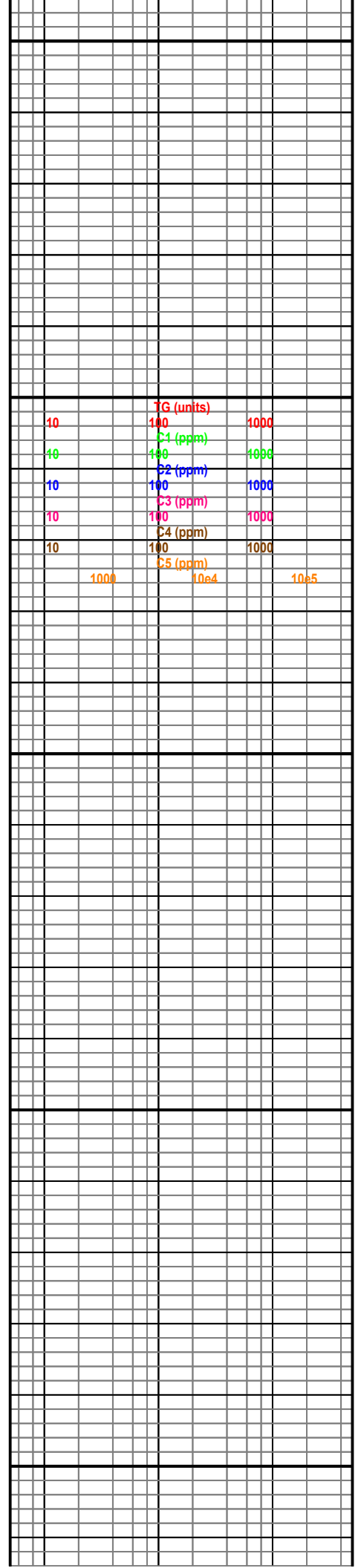
prog. Top White River @ 160'

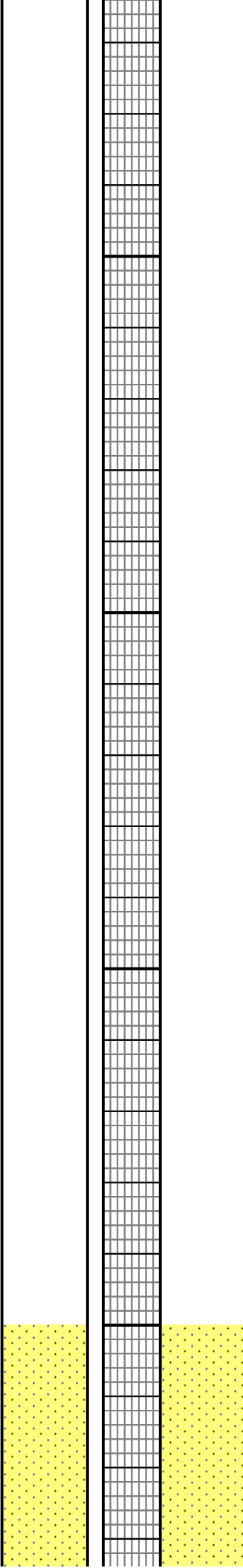
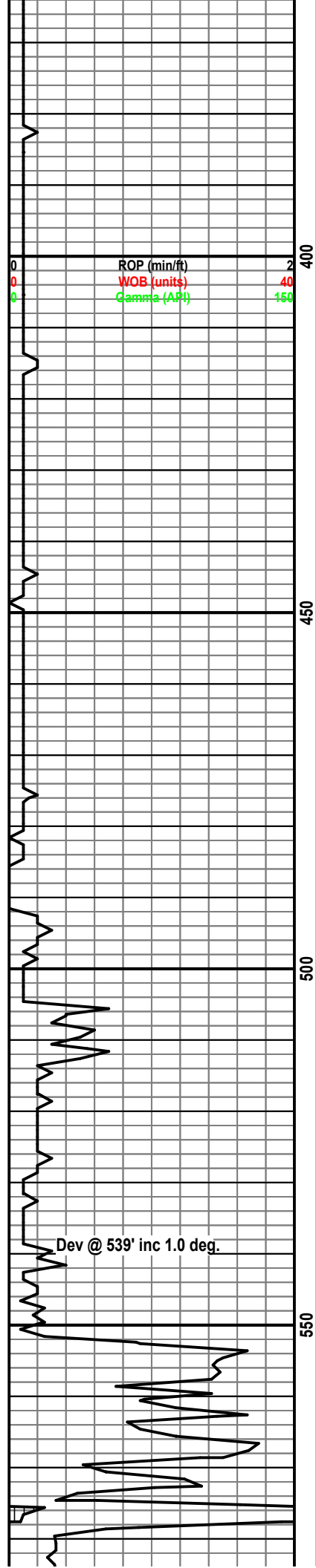
SS: pred qtzxl, wh, orng, fria, c(l)-c(u), sbrnd-sbang, sl cal, arg mtx.

SS: pred qtzxl, wh, orng, fria, f(u)-m(l), sbrnd-sbang, sl cal, arg mtx.

SS: pred qtzxl, wh, orng, fria, f(u)-m(l), sbrnd-sbang, sl cal, arg mtx.

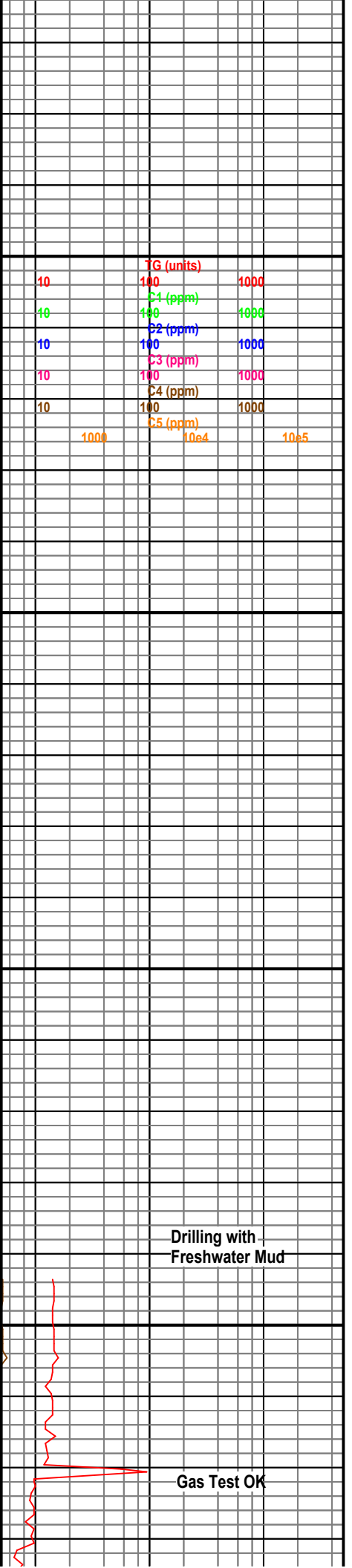
prog. Top Laramie @ 280'

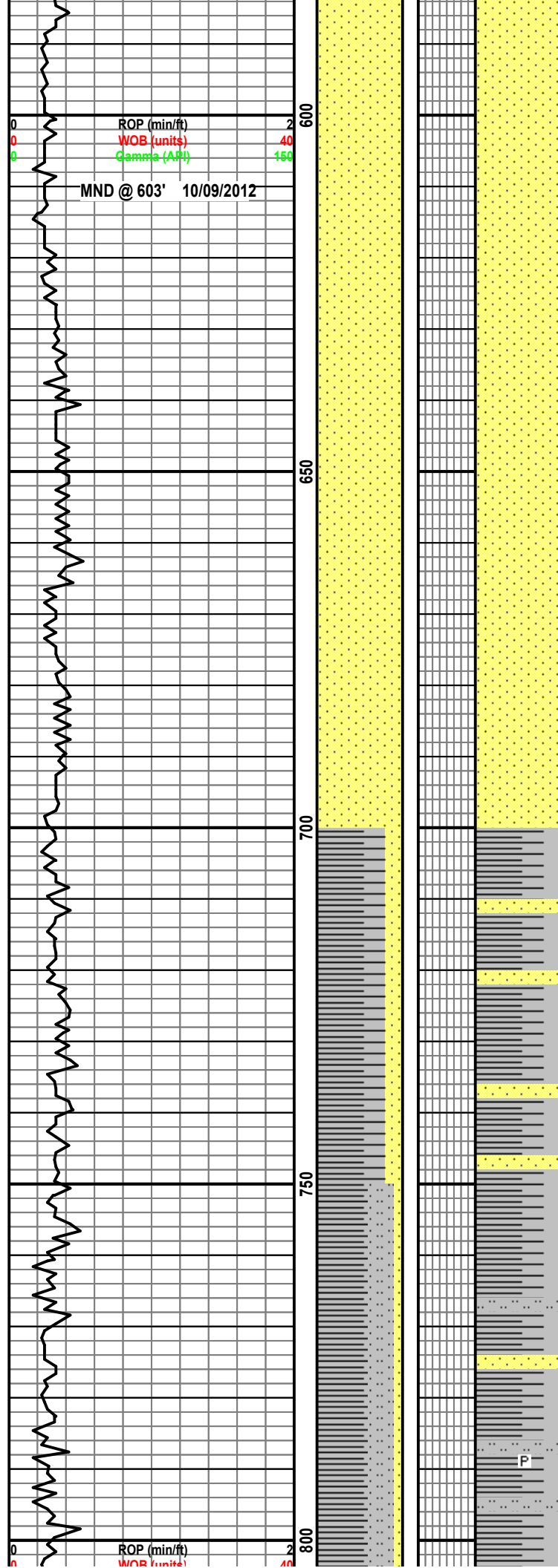




prog. Fox Hills Shale @ 500'

SS: yel, brn, orng, c(l)-c(u)gr, fri, sbrnd
-sbang, mod srt, shly mtx, v calc cmt,
abnt lst qtz.





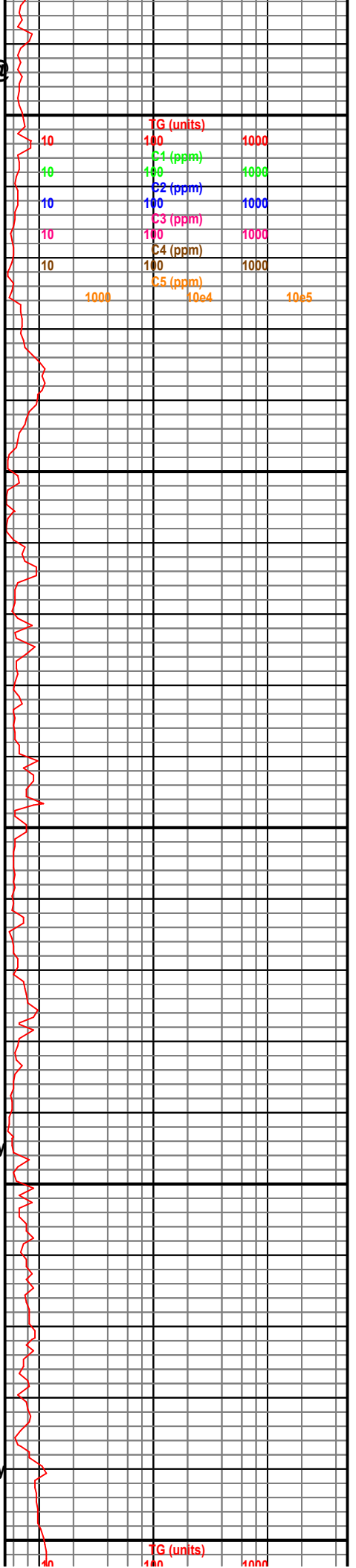
prog. Fox Hills Sandstone @ 590'

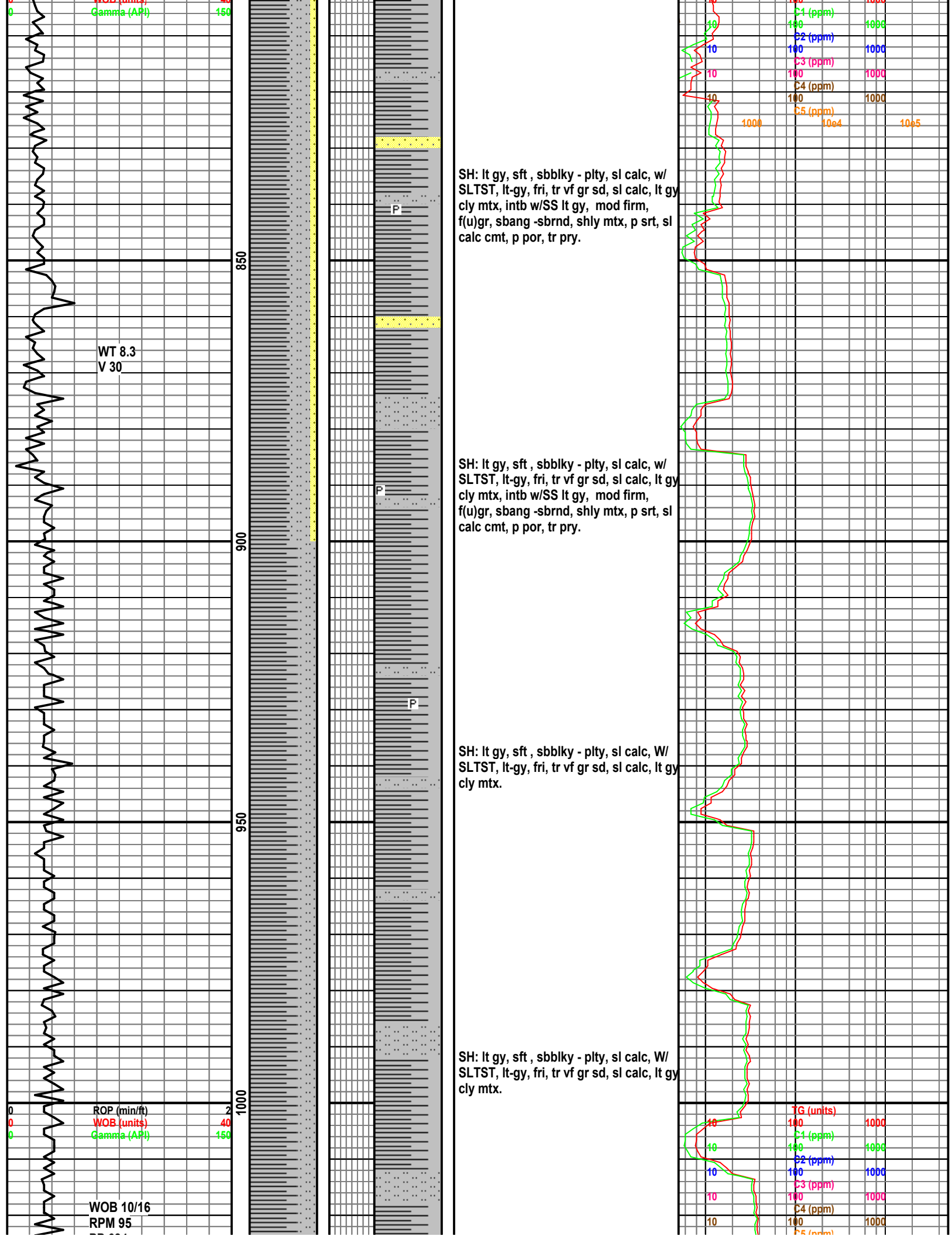
SS: yel, brn, orng, c(l)-c(u)gr, fri, sbrnd -sbang, mod srt, shly mtx, v calc cmt, abnt lst qtz.

SS: yel, brn, orng, c(l)-c(u)gr, fri, sbrnd -sbang, mod srt, shly mtx, v calc cmt, abnt lst qtz.

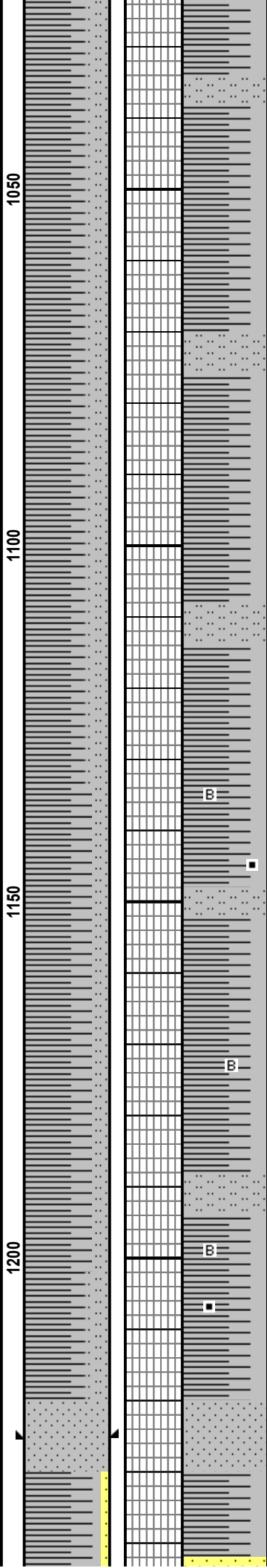
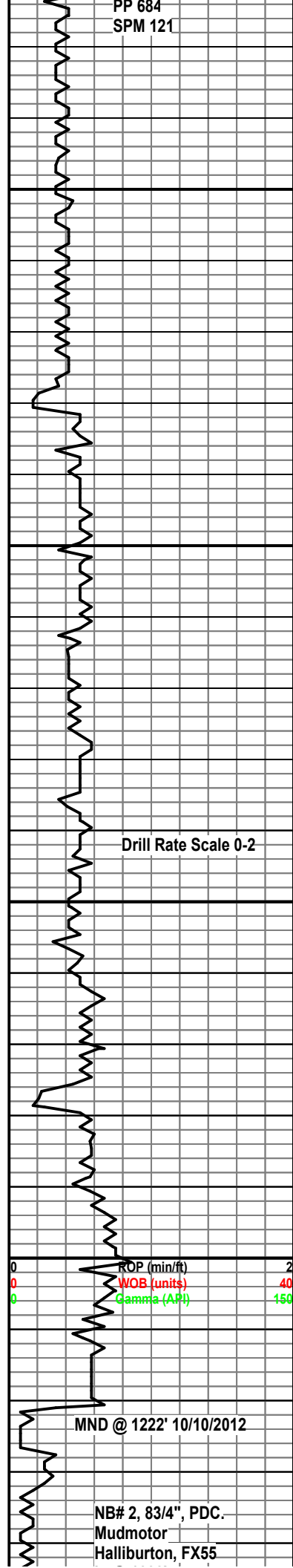
SH: lt gy, sft, sbbky - plty, sl calc, w/ SLTST, lt-gy, fri, tr vf gr sd, sl calc, lt gy cly mtx, intb w/SS lt gy, mod firm, f(u)gr, sbang -sbrnd, shly mtx, p srt, sl calc cmt, p por, tr pry.

SH: lt gy, sft, sbbky - plty, sl calc, w/ SLTST, lt-gy, fri, tr vf gr sd, sl calc, lt gy cly mtx, intb w/SS lt gy, mod firm, f(u)gr, sbang -sbrnd, shly mtx, p srt, sl calc cmt, p por, tr pry.





PP 684
SPM 121



SH: lt gy, sft , sbblky - plty, sl calc, W/
SLTST, lt-gy, fri, tr vf gr sd, sl calc, lt gy
cly mtx.

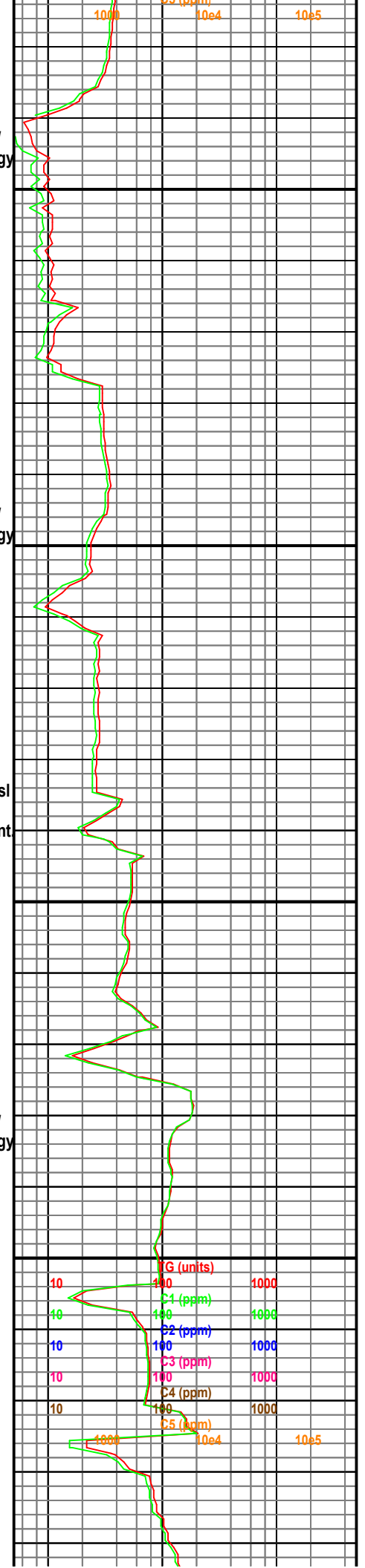
SH: lt gy, sft , sbblky - plty, sl calc, W/
SLTST, lt-gy, fri, tr vf gr sd, sl calc, lt gy
cly mtx.

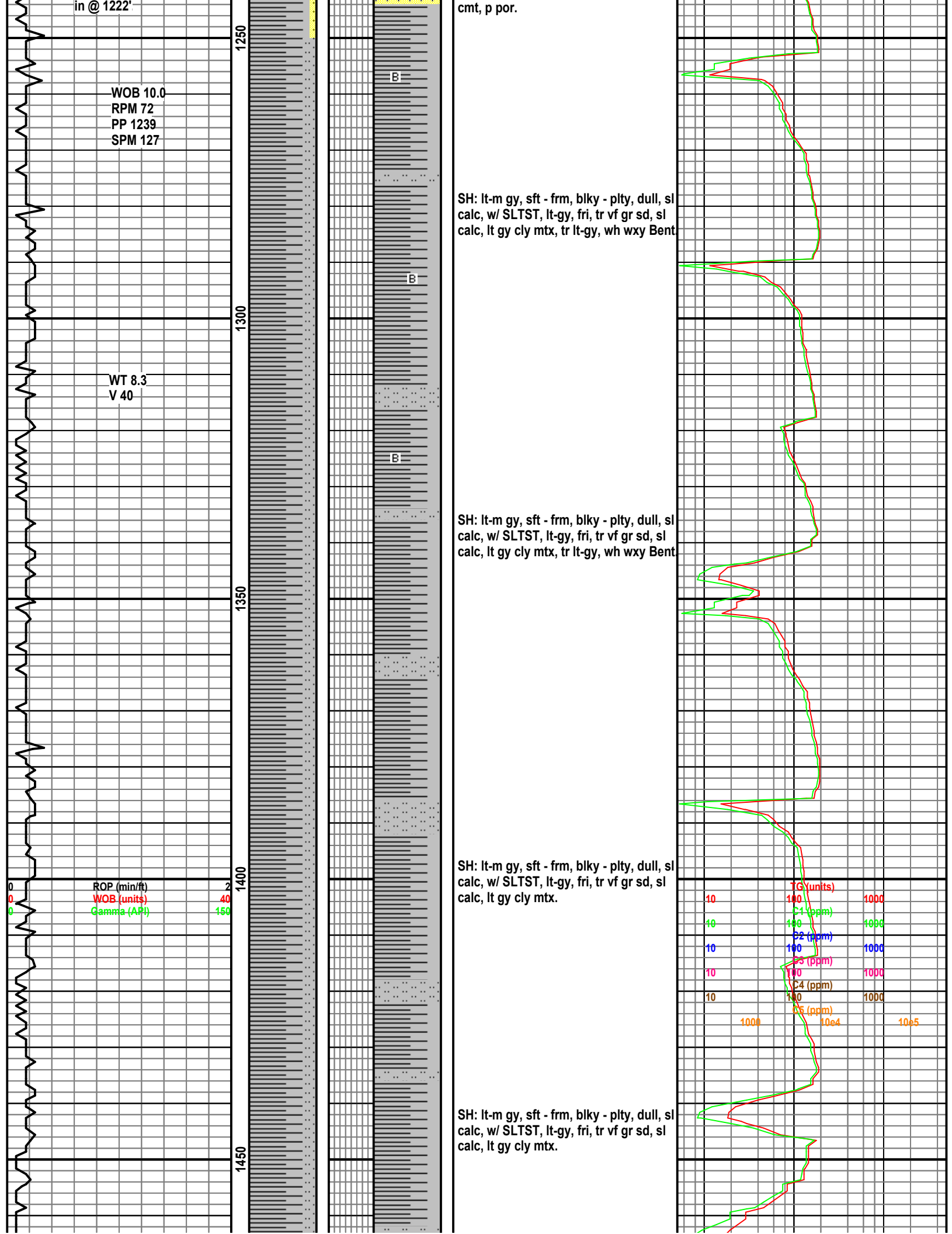
SH: lt-m gy, sft - frm, blkly - plty, dull, sl
calc, w/ SLTST, lt-gy, fri, tr vf gr sd, sl
calc, lt gy cly mtx, tr lt-gy, wh wxy Bent

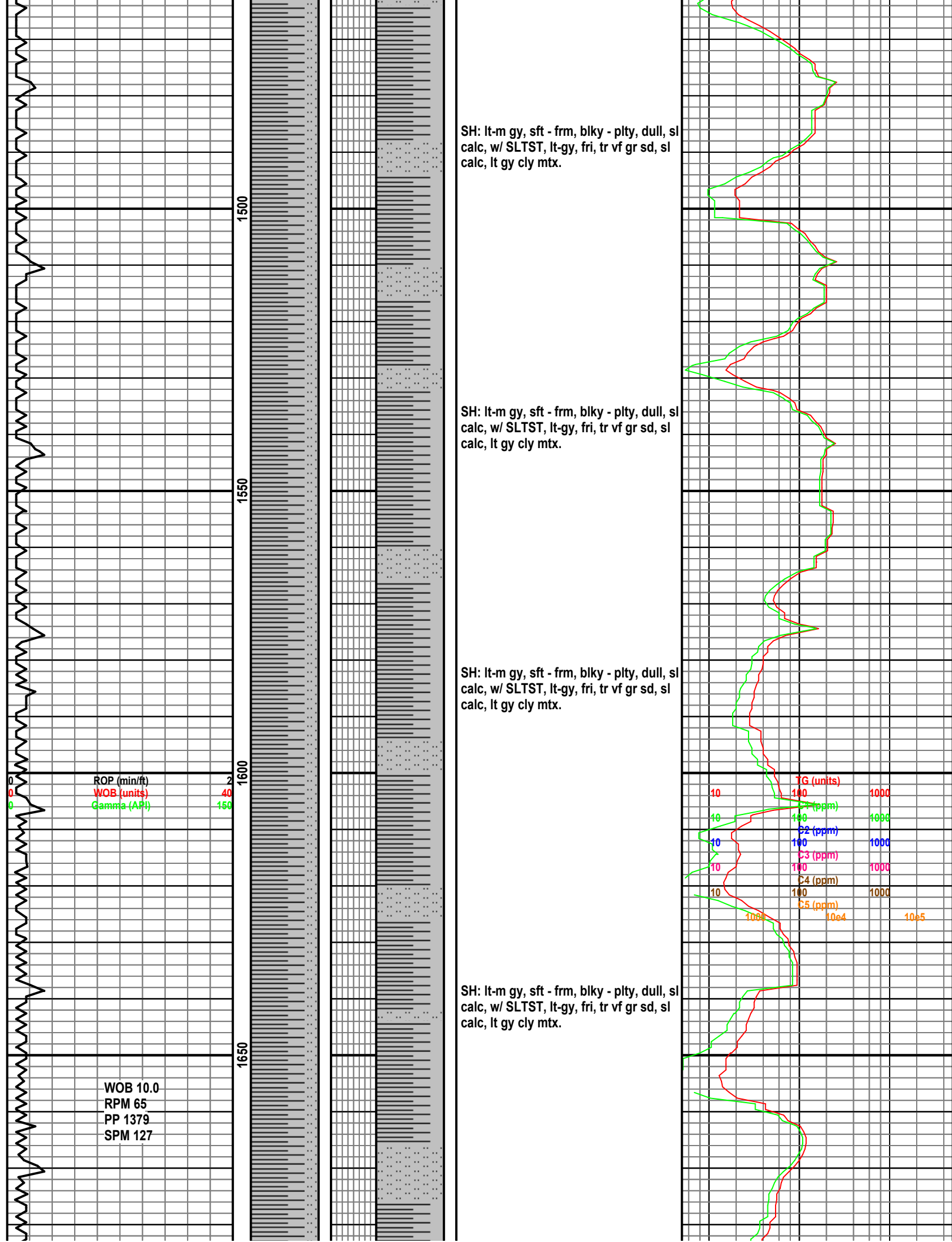
SH: lt gy, sft , sbblky - plty, sl calc, W/
SLTST, lt-gy, fri, tr vf gr sd, sl calc, lt gy
cly mtx.

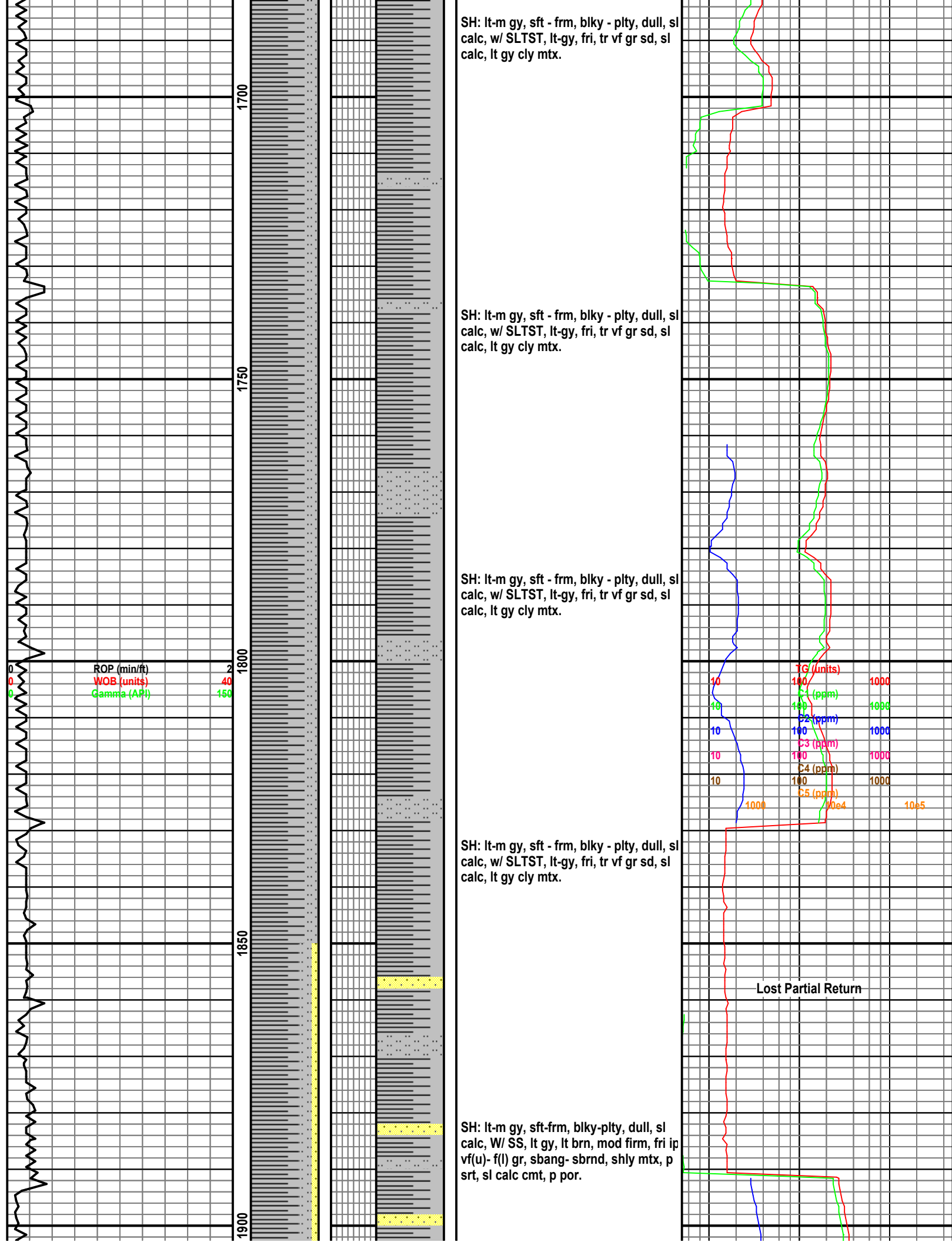
Set 9 5/8" casing at 1222'

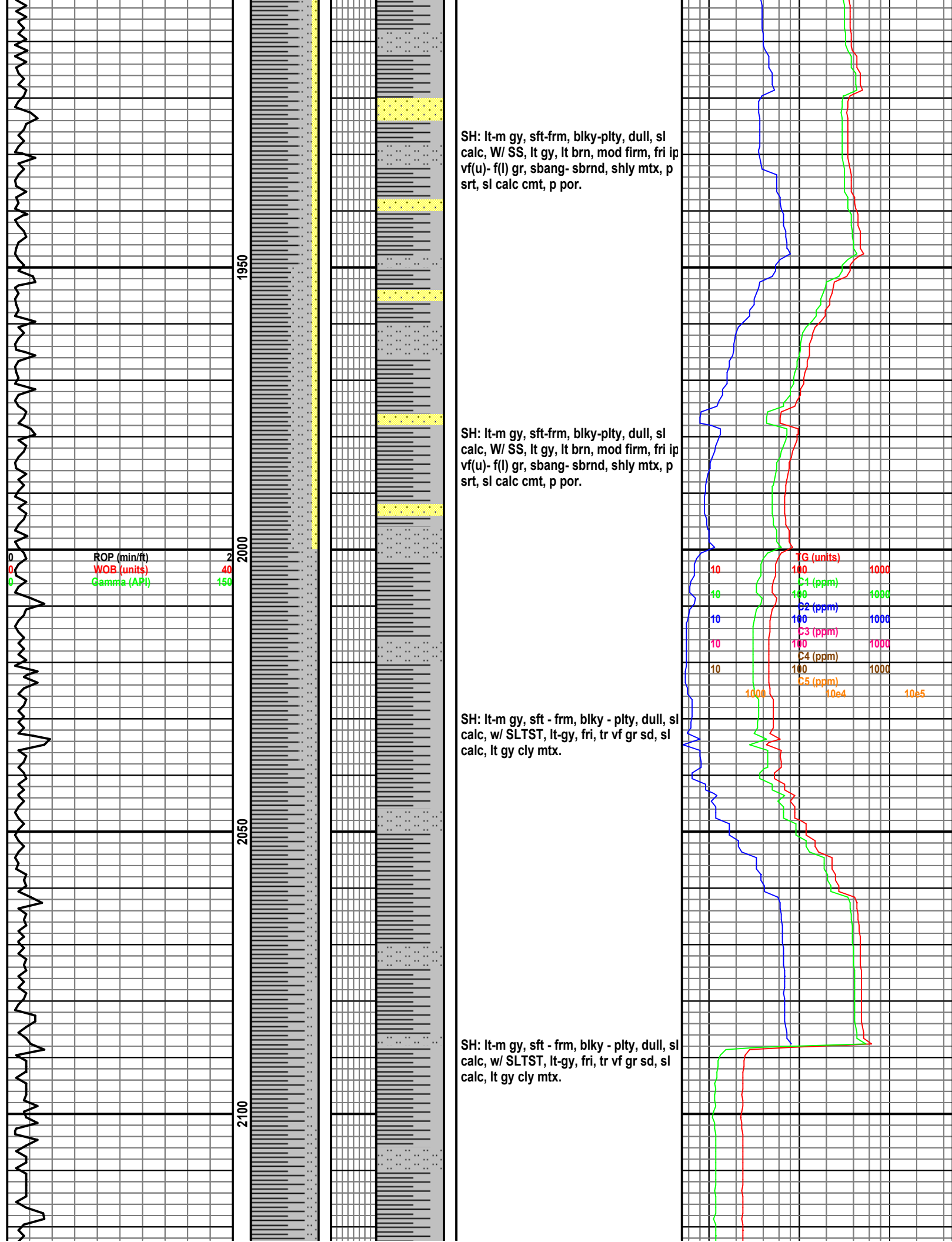
SS: lt gy, lt brn, mod firm, f(u)-m(l) gr,
sbang-sbrnd, shly mtx, p srt, sl calc

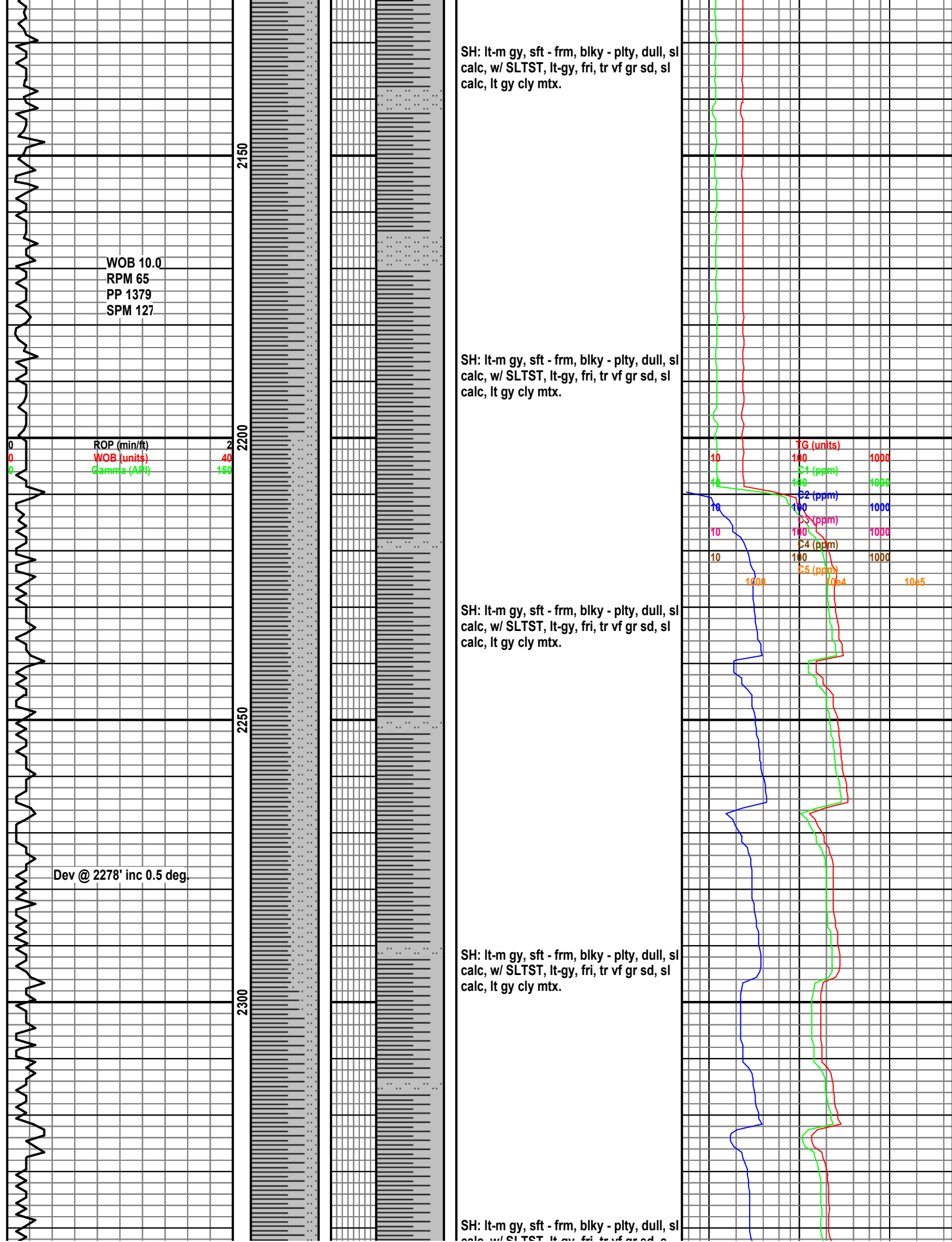


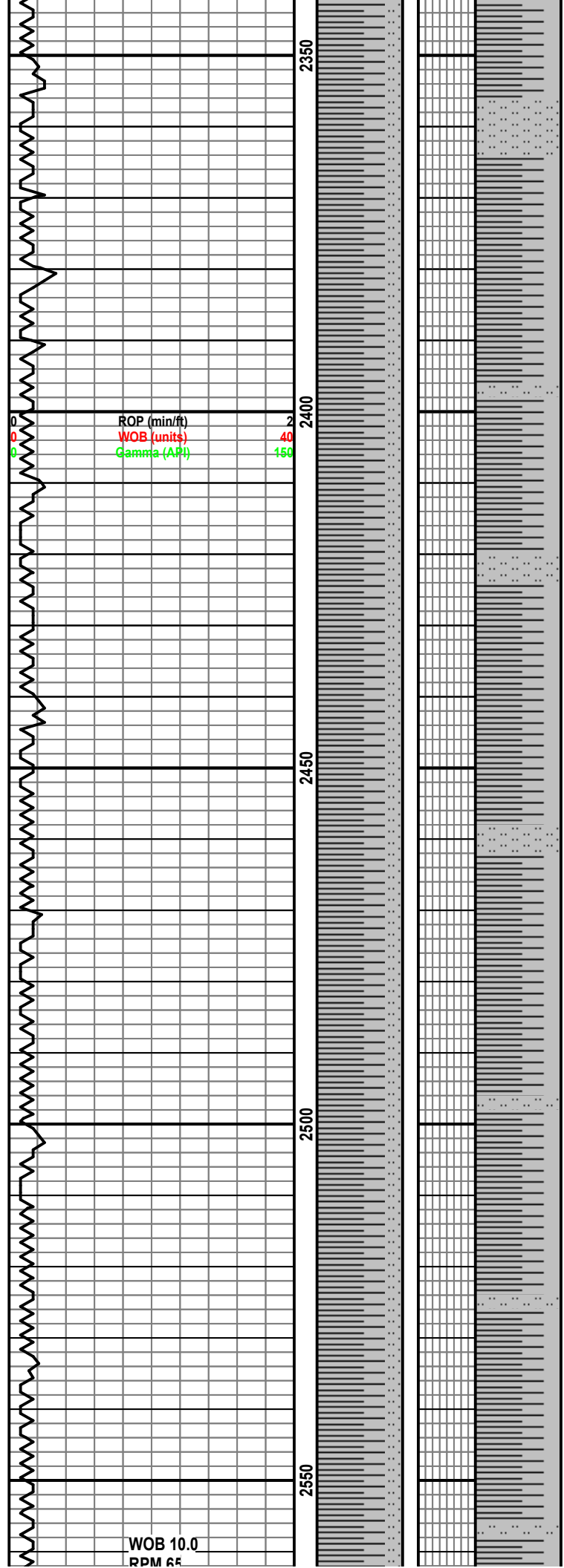












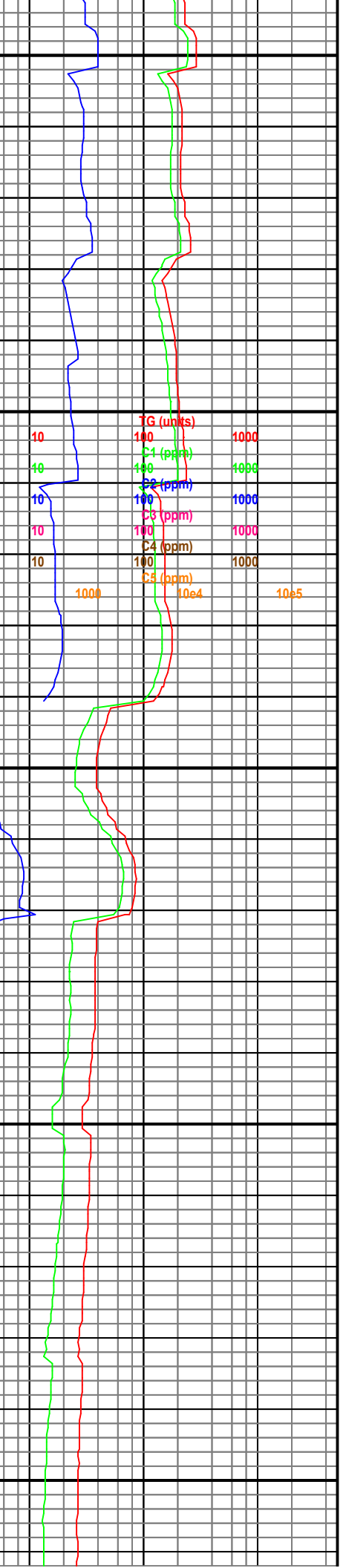
SH: lt-m gy, sft - frm, blkly - plty, dull, sl
calc, w/ SLTST, lt-gy, fri, tr vf gr sd, sl
calc, lt gy cly mtx.

SH: lt-m gy, sft - frm, blkly - plty, dull, sl
calc, w/ SLTST, lt-gy, fri, tr vf gr sd, sl
calc, lt gy cly mtx

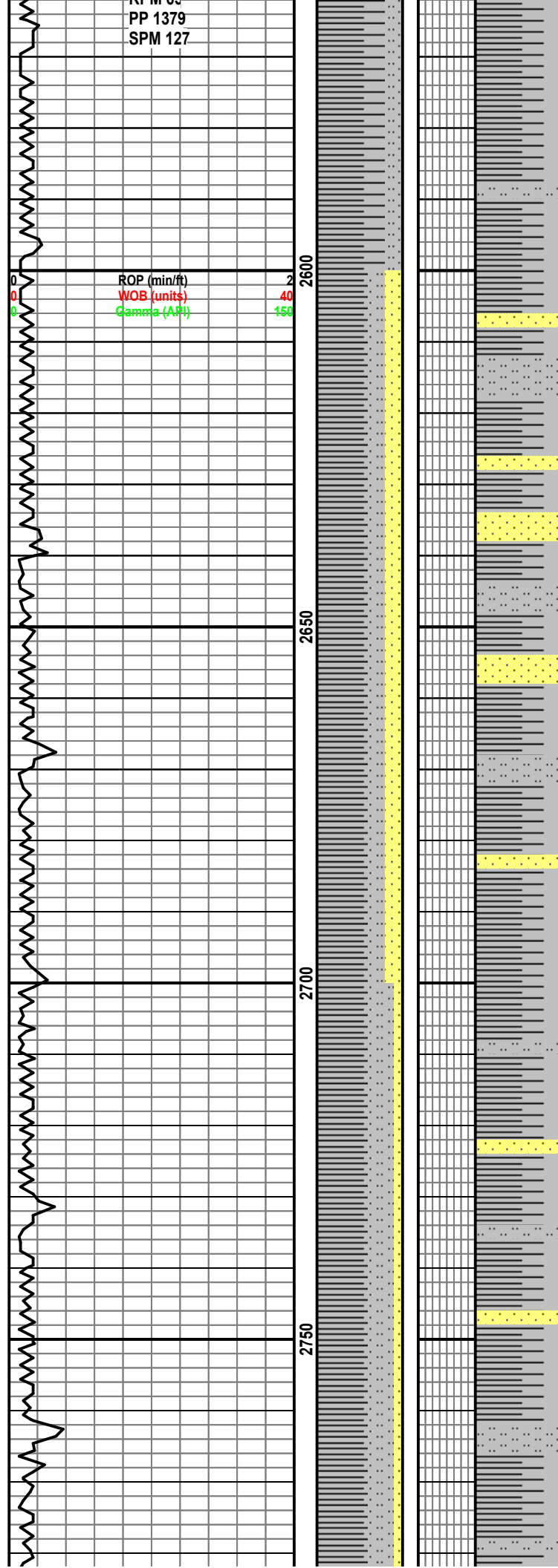
SH: lt-m gy, sft - frm, blkly - plty, dull, sl
calc, w/ SLTST, lt-gy, fri, tr vf gr sd, sl
calc, lt gy cly mtx.

SH: lt-m gy, sft - frm, blkly - plty, dull, sl
calc, w/ SLTST, lt-gy, fri, tr vf gr sd, sl
calc, lt gy cly mtx.

SH: lt-m gy, sft - frm, blkly - plty, dull, sl
calc, w/ SLTST, lt-gy, fri, tr vf gr sd, sl
calc, lt gy cly mtx.



RI 1100
PP 1379
SPM 127

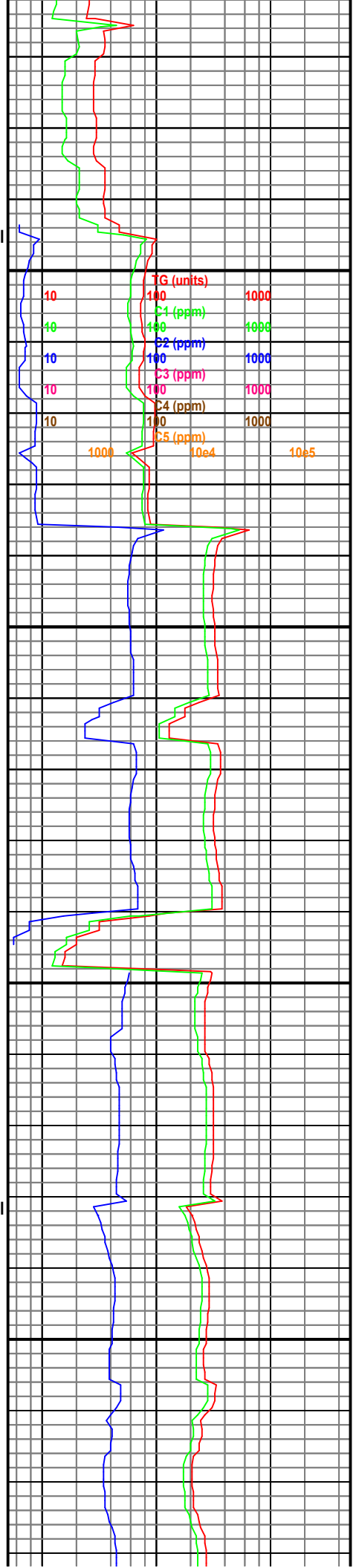


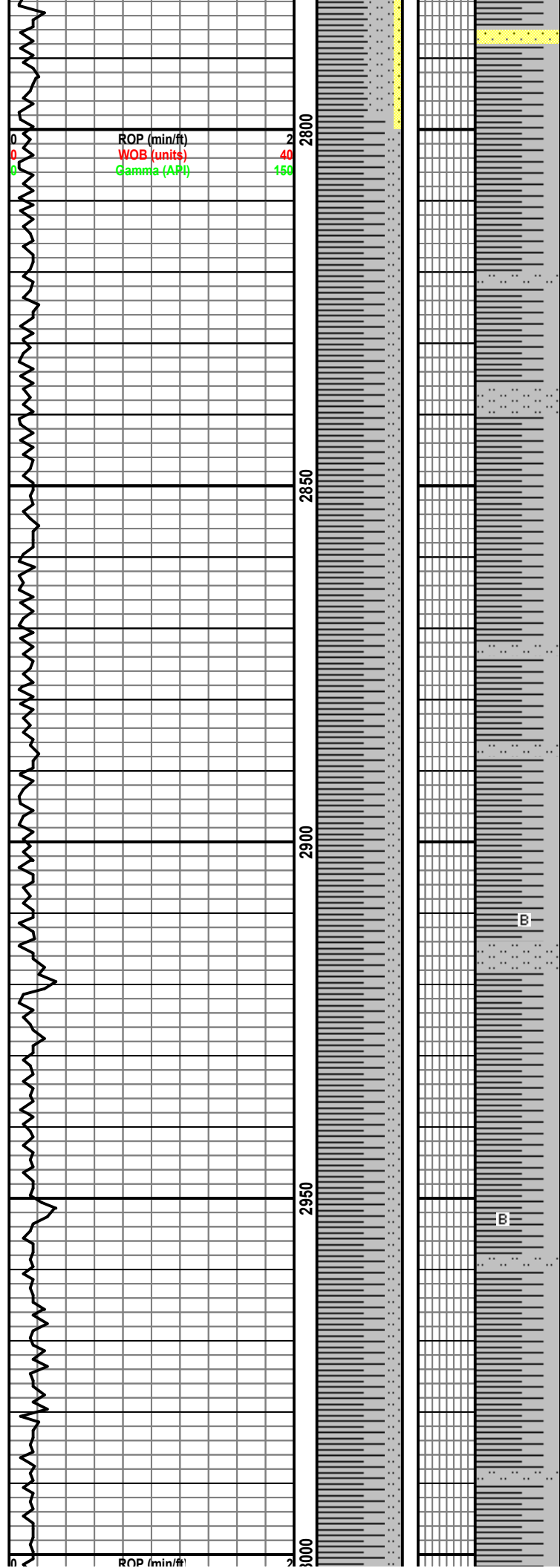
SH: lt-m gy, sft - frm, blk - plty, dull, sl calc, w/ SLTST, lt-gy, fri, tr vf gr sd, sl calc, lt gy cly mtx.

SH: lt-m gy, sft-frm, blk-pty, dull, sl calc, W/SS, lt gy, S&P ip, mod firm, fri ip, vf(u)- f(l) gr, sbang- sbrnd, p srt, sl calc cmt, p por.

SH: lt-m gy, sft-frm, blk-pty, dull, sl calc, W/SS, lt gy, S&P ip, mod firm, fri ip, vf(u)- f(l) gr, sbang- sbrnd, p srt, sl calc cmt, p por.

SH: lt-m gy, sft - frm, blk - plty, dull, sl calc, w/ SLTST, lt-gy, fri, tr vf gr sd, sl calc, lt gy cly mtx.





SH: lt-m gy, sft-frm, blk-pty, dull, sl
calc, W/SS, lt gy, S&P ip, mod firm, fri
ip, vf(u)- f(l) gr, sbang- sbrnd, p srt, sl
calc cmt, p por.

SH: lt-m gy, sft - frm, blk- pty, dull, sl
calc, w/ SLTST, lt-gy, fri, tr vf gr sd, sl
calc, lt gy cly mtx.

SH: lt-m gy, sft - frm, blk- pty, dull, sl
calc, w/ SLTST, lt-gy, fri, tr vf gr sd, sl
calc, lt gy cly mtx.

SH: lt-m gy, sft - frm, blk- pty, dull, sl
calc, w/ SLTST, lt-gy, fri, tr vf gr sd, sl
calc, lt gy cly mtx, tr lt-gy, wh wxy Bent

SH: lt-m gy, sft - frm, blk- pty, dull, sl
calc, w/ SLTST, lt-gy, fri, tr vf gr sd, sl
calc, lt gy cly mtx, tr lt-gy, wh wxy Bent

