

T10N, R57W, 6th P.M.

WHITTING OIL & GAS CORP.

2006, Priv. Alum. Cap.  
0.9' Below Ground  
Lat: 40.860797°  
Long: 103.785433°

Target  
Bottom Hole

1917, G.L.O. Brass Cap,  
1.2' High  
Lat: 40.860800°  
Long: 103.786292°

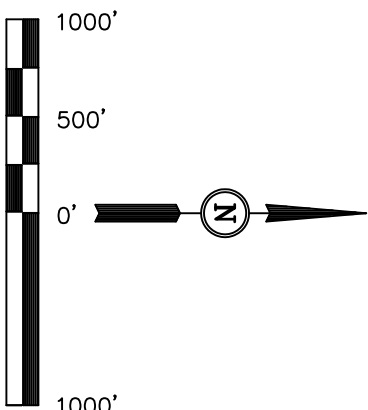
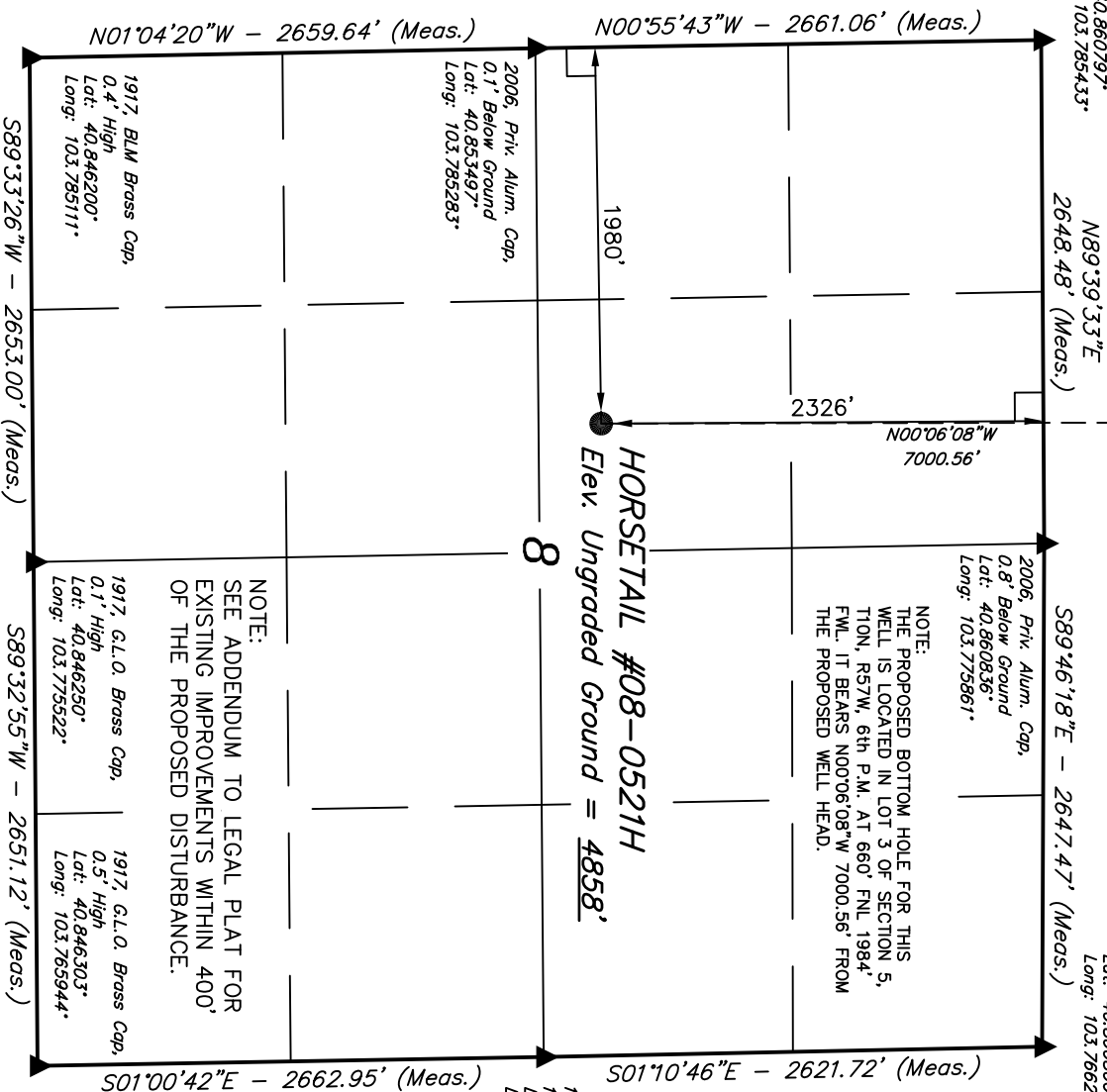
Well location, HORSETAIL #08-0521H, (SURFACE LOCATION) located as shown in the SE 1/4 NW 1/4 of Section 8, T10N, R57W, 6th P.M., Weld County, Colorado.

BASIS OF ELEVATION

SPOT ELEVATION LOCATED AT THE NORTHEAST CORNER OF SECTION 15, 19N, R58W, 6th P.M. TAKEN FROM THE GATEHOOK SPRING, QUADRANGLE, COLORADO, WELD COUNTY, 7.5 MINUTE QUAD (TOPOGRAPHIC MAP) PUBLISHED BY THE UNITED STATES DEPARTMENT OF THE INTERIOR, GEOLOGICAL SURVEY. SAID ELEVATION IS MARKED AS BEING 4679 FEET.

BASIS OF BEARINGS

BASIS OF BEARINGS IS A G.P.S. OBSERVATION.



CERTIFICATE

THIS IS TO CERTIFY THAT THE ABOVE PLAT WAS PREPARED FROM FIELD NOTES OF ACTUAL SURVEYS MADE BY ME OR UNDER MY SUPERVISION AND THAT THE SAME ARE TRUE AND CORRECT TO THE BEST OF MY KNOWLEDGE AND BELIEF.

REGISTERED LAND SURVEYOR  
REGISTRATION NO. 12492  
STATE OF COLORADO  
07-13-12

UINTAH ENGINEERING & LAND SURVEYING  
85 SOUTH 200 EAST - VERNAL, UTAH 84078  
(435) 789-1017

LEGEND:

- 90° SYMBOL
- PROPOSED WELL HEAD.
- SECTION CORNERS LOCATED.

PDOP = 1.7

NAD 83 (SURFACE LOCATION)	
LATITUDE = 40°51'16.00" (40.854444)	
LONGITUDE = 103°46'41.33" (103.778147)	
NAD 27 (SURFACE LOCATION)	
LATITUDE = 40°51'16.05" (40.854458)	
LONGITUDE = 103°46'39.52" (103.77644)	

SCALE	DATE SURVEYED:	DATE DRAWN:
1" = 1000'	07-09-12	07-12-12
PARTY	REFERENCES	
D.L.S. C.T. K.O.	G.L.O. PLAT	
WEATHER	FILE	
HOT	WHITTING OIL & GAS CORP.	

T10N, R57W, 6th P.M.

2010, Priv. Alum. Cap.  
0.3' High  
Lat: 40.875503°  
Long: 103.766069°

WHITTING OIL & GAS CORP.

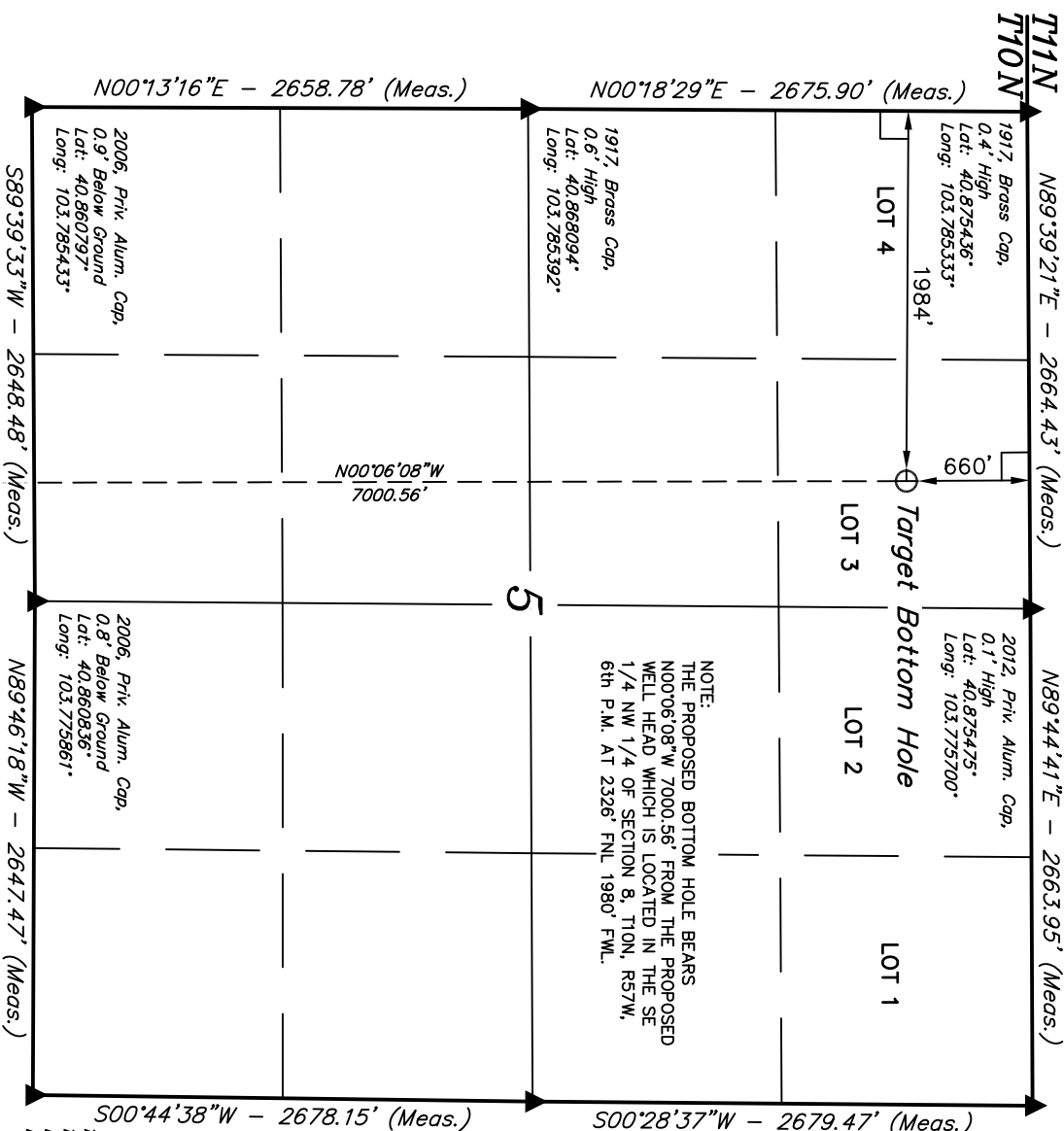
Well location, HORSETAIL #08-0521H, (TARGET BOTTOM HOLE) located as shown in LOT 3 of Section 5, T10N, R57W, 6th P.M., Weld County, Colorado.

BASIS OF ELEVATION

SPOT ELEVATION LOCATED AT THE NORTHEAST CORNER OF SECTION 15, 19N, R58W, 6th P.M. TAKEN FROM THE GATEHOOK SPRING, QUADRANGLE, COLORADO, WELD COUNTY, 7.5 MINUTE QUAD (TOPOGRAPHIC MAP) PUBLISHED BY THE UNITED STATES DEPARTMENT OF THE INTERIOR, GEOLOGICAL SURVEY. SAID ELEVATION IS MARKED AS BEING 4679 FEET.

BASIS OF BEARINGS

BASIS OF BEARINGS IS A G.P.S. OBSERVATION.



THIS IS TO CERTIFY THAT THE ABOVE PLAT WAS PREPARED FROM FIELD NOTES OF ACTUAL SURVEYS MADE BY ME OR UNDER MY SUPERVISION AND THAT THE SAME ARE TRUE AND CORRECT TO THE BEST OF MY KNOWLEDGE AND BELIEF.

REGISTERED LAND SURVEYOR  
REGISTRATION NO. 17492  
STATE OF COLORADO  
07-13-12

UNTAH ENGINEERING & LAND SURVEYING  
85 SOUTH 200 EAST - VERNAL, UTAH 84078  
(435) 789-1017

NAD 83 (TARGET BOTTOM HOLE)
LATITUDE = 40°52'25.15" (40.873653)
LONGITUDE = 103°46'41.43" (103.778175)
NAD 27 (TARGET BOTTOM HOLE)
LATITUDE = 40°52'25.21" (40.873669)
LONGITUDE = 103°46'39.62" (103.777672)

SCALE	1" = 1000'	DATE SURVEYED:	07-09-12	DATE DRAWN:	07-12-12
PARTY	D.L.S. C.T. K.O.	REFERENCES	G.L.O. PLAT		
WEATHER	HOT	FILE	WHITTING OIL & GAS CORP.		

LEGEND:

- = 90° SYMBOL
- = PROPOSED WELL HEAD.
- ▲ = SECTION CORNERS LOCATED.
- Surface Location