

# WELL LOCATION PLAT T8N, R61W, 6th P.M.

NOBLE ENERGY, INC.

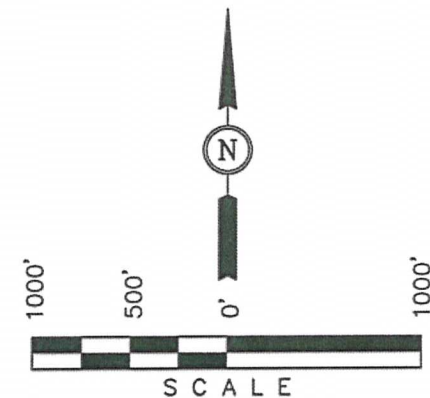
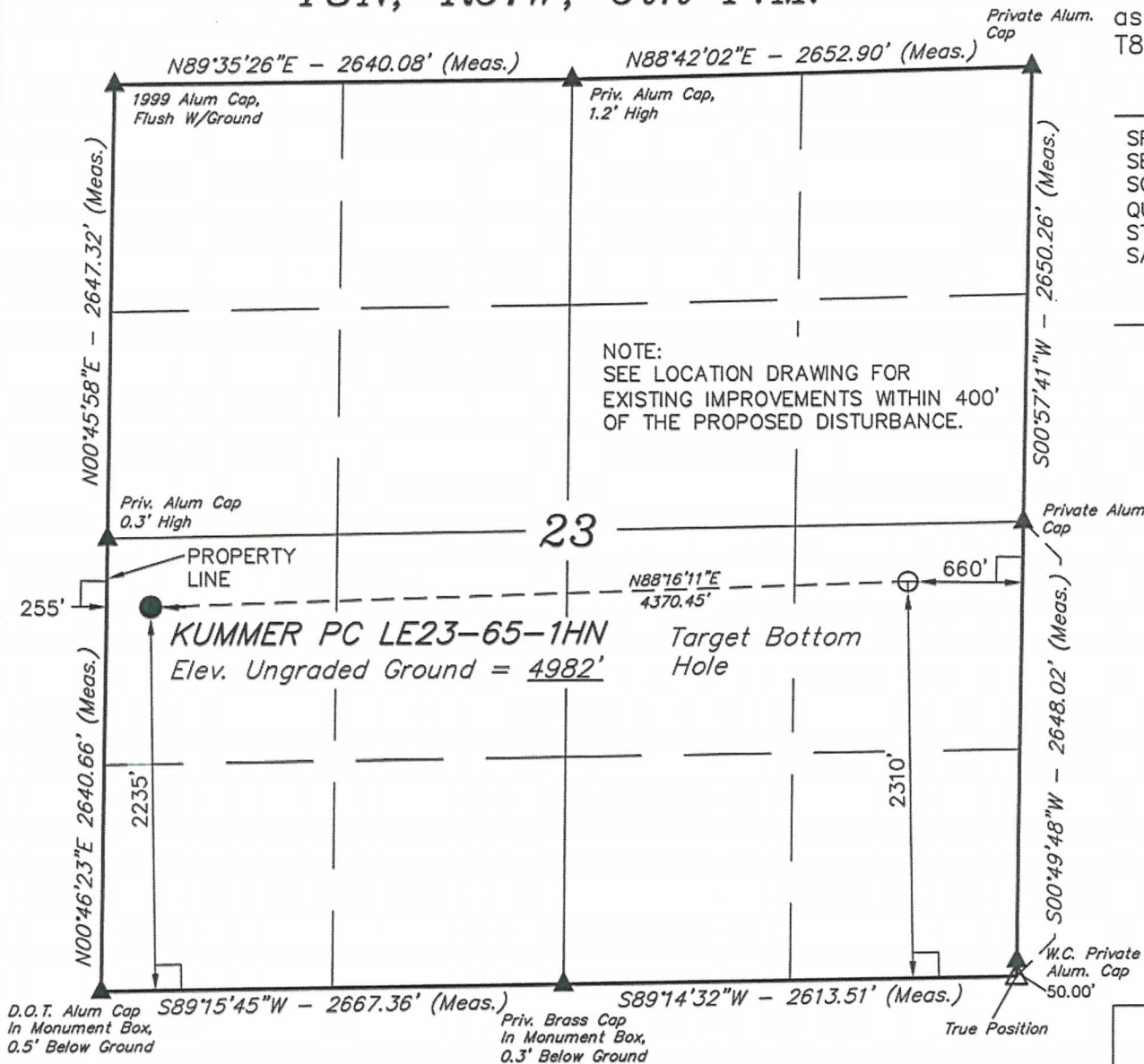
Well location, KUMMER PC LE23-65-1HN, located as shown in the NW 1/4 SW 1/4 of Section 23, T8N, R61W, 6th P.M., Weld County, Colorado.

## BASIS OF ELEVATION

SPOT ELEVATION LOCATED AT THE NORTHEAST CORNER OF SECTION 2, T9N, R61W, 6th P.M. TAKEN FROM THE GROVER SOUTH, QUADRANGLE, COLORADO, WELD COUNTY, 7.5 MINUTE QUAD (TOPOGRAPHIC MAP) PUBLISHED BY THE UNITED STATES DEPARTMENT OF THE INTERIOR, GEOLOGICAL SURVEY. SAID ELEVATION IS MARKED AS BEING 5043 FEET.

## BASIS OF BEARINGS

BASIS OF BEARINGS IS A G.P.S. OBSERVATION.



## CERTIFICATE

THIS IS TO CERTIFY THAT THE ABOVE PLAT WAS PREPARED FROM FIELD NOTES OF ACTUAL SURVEYS MADE BY ME OR UNDER MY SUPERVISION AND THAT THE SAME ARE TRUE AND CORRECT TO THE BEST OF MY KNOWLEDGE AND BELIEF.

REGISTERED LAND SURVEYOR  
REGISTRATION NO. 17492  
STATE OF COLORADO  
08-05-12

## LEGEND:

- └─┘ = 90° SYMBOL
- = PROPOSED WELL HEAD.
- ▲ = SECTION CORNERS LOCATED.
- △ = SECTION CORNERS RE-ESTABLISHED. (Not Set on Ground.)

## FEATURE TABLE

EXISTING FEATURE	DIRECTION	LENGTH
PROPERTY LINE	WEST	255'

PDOP = 2.2

NAD 83 (TARGET BOTTOM HOLE)		NAD 83 (SURFACE LOCATION)	
LATITUDE	= 40°38'47.79" (40.646608)	LATITUDE	= 40°38'46.48" (40.646244)
LONGITUDE	= 104°09'56.36" (104.165656)	LONGITUDE	= 104°10'53.02" (104.181394)

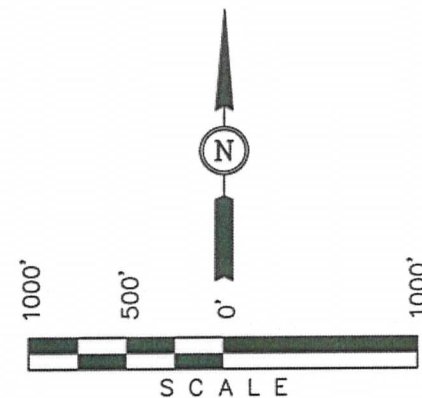
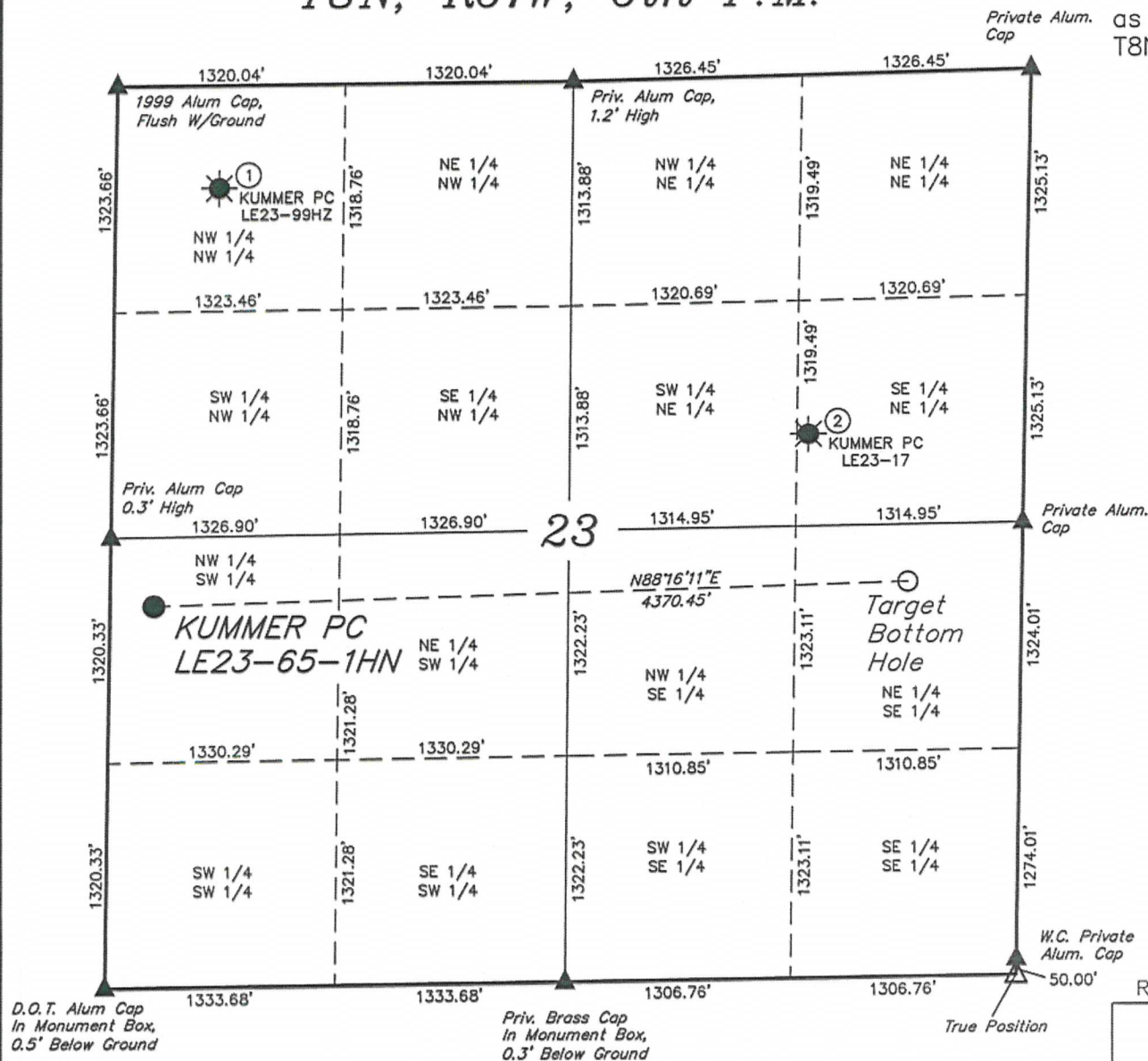
UINTAH ENGINEERING & LAND SURVEYING  
85 SOUTH 200 EAST - VERNAL, UTAH 84078  
(435) 789-1017

SCALE 1" = 1000'	DATE SURVEYED: 08-31-12	DATE DRAWN: 10-04-12
PARTY DARREN SHANKS K.H. S.R.L.	REFERENCES G.L.O. PLAT	
WEATHER WARM	FILE NOBLE ENERGY, INC.	

# SITE SKETCH T8N, R61W, 6th P.M.

NOBLE ENERGY, INC.

Well location, KUMMER PC LE23-65-1HN, located as shown in the NW 1/4 SW 1/4 of Section 23, T8N, R61W, 6th P.M., Weld County, Colorado.



## LEGEND:

- ▲ = SECTION CORNERS LOCATED.
- △ = SECTION CORNERS RE-ESTABLISHED. (Not Set on Ground.)
- = PROPOSED WELL HEAD.
- = TARGET BOTTOM HOLE
- ☼ = PRODUCING WELLS

REVISED: 10-10-12

UINTAH ENGINEERING & LAND SURVEYING  
85 SOUTH 200 EAST - VERNAL, UTAH 84078  
(435) 789-1017

SCALE 1" = 1000'	DATE SURVEYED: 08-31-12	DATE DRAWN: 10-04-12
PARTY DARREN SHANKS K.H. S.R.L.	REFERENCES G.L.O. PLAT	
WEATHER WARM	FILE NOBLE ENERGY, INC.	

	WELL NAME	QTR-QTR	FOOTAGES		LATITUDE	LONGITUDE	ELEVATION	PDOP
1	KUMMER PC LE23-99HZ	NW 1/4 NW 1/4	599' FNL	599' FWL	40.652978°	104.180036°	4988'	4.4
2	KUMMER PC LE23-17	SE 1/4 NE 1/4	2100' FNL	1251' FEL	40.648983°	104.167736°	4989'	3.0