

Encana OIL & GAS (USA) INC.
WELL PAD SG E34 496
LOCATED IN GARFIELD COUNTY, COLORADO
SECTION 34, T4S, R96W, 6th P.M.

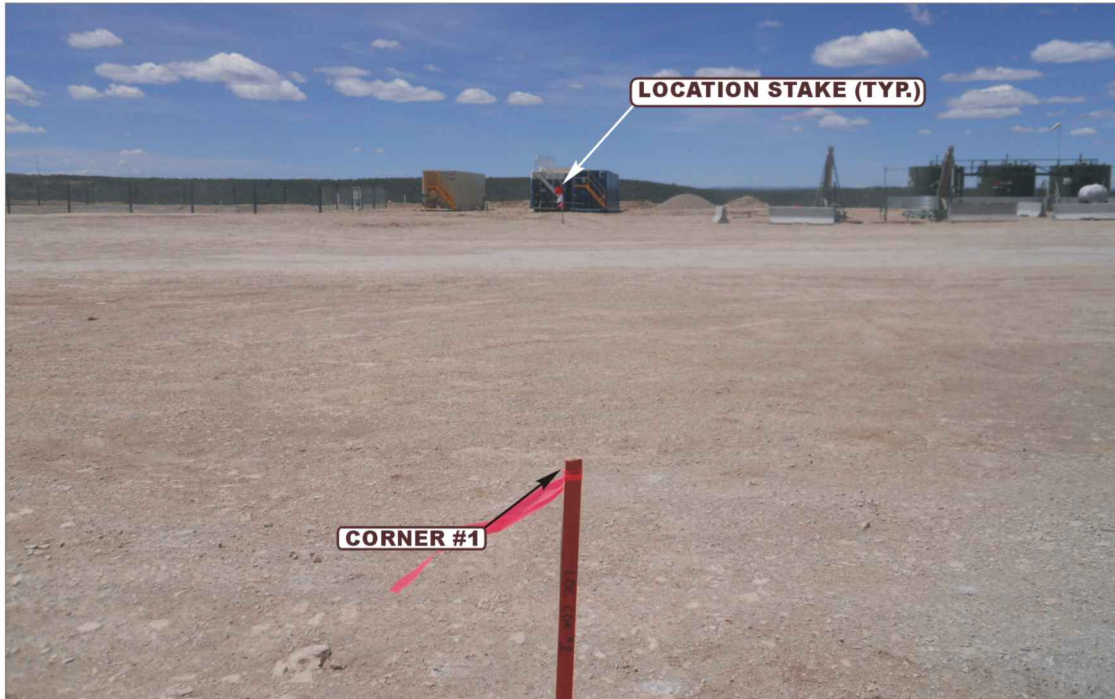


PHOTO: VIEW FROM CORNER #1 TO LOCATION STAKES

CAMERA ANGLE: NORTHWESTERLY



PHOTO: VIEW OF EXISTING ACCESS

CAMERA ANGLE: NORTHERLY



UELS Uintah Engineering & Land Surveying
85 South 200 East Vernal, Utah 84078
(435) 789-1017 * FAX (435) 789-1813

LOCATION PHOTOS

08 **05** **10**
MONTH DAY YEAR

TAKEN BY: B.E.B. DRAWN BY: J.L.G. REVISED: 12-19-12

PHOTO
P1

Encana OIL & GAS (USA) INC.
WELL PAD SG E34 496
LOCATED IN GARFIELD COUNTY, COLORADO
SECTION 34, T4S, R96W, 6th P.M.



PHOTO: VIEW OF LOCATION STAKES

CAMERA ANGLE: NORTHERLY



PHOTO: VIEW OF LOCATION STAKES

CAMERA ANGLE: SOUTHERLY



- Since 1964 -

UELS Uintah Engineering & Land Surveying
85 South 200 East Vernal, Utah 84078
(435) 789-1017 * FAX (435) 789-1813

LOCATION PHOTOS

08 **05** **10**
MONTH DAY YEAR

TAKEN BY: B.E.B. DRAWN BY: J.L.G. REVISED: 12-19-12

PHOTO
P2

Encana OIL & GAS (USA) INC.
WELL PAD SG E34 496
LOCATED IN GARFIELD COUNTY, COLORADO
SECTION 34, T4S, R96W, 6th P.M.



PHOTO: VIEW OF LOCATION STAKES

CAMERA ANGLE: EASTERLY



PHOTO: VIEW OF LOCATION STAKES

CAMERA ANGLE: WESTERLY



- Since 1964 -

UELS

Uintah Engineering & Land Surveying
85 South 200 East Vernal, Utah 84078
(435) 789-1017 * FAX (435) 789-1813

LOCATION PHOTOS

08 **05** **10**
MONTH DAY YEAR

TAKEN BY: B.E.B.

DRAWN BY: J.L.G.

REVISED: 12-19-12

PHOTO
P3