



High Resolution Induction  
Compensated Neutron

Pioneer Energy Services

Company Sundance Energy Inc.  
Well MLD 43-22  
Field Waterberg  
County Weld  
State Colorado

Location  
Site: 1130 FS & 2244 FEL, N5SE  
BL: 2021 FS & 2377 FEL, N5SE  
SEC 22 T10P 4N1 RGE 69N1  
G1  
Elevation 4543  
UTM  
E 4655  
N 4643

APR # 0512331320000  
Other Services  
None

Date  
Log Date  
Log Interval  
Log Units  
Bottom Logged Interval

Well  
County  
State  
Firm  
Log Measured From  
KB  
October 27, 2012  
7706  
7699

Company  
Field  
County  
State  
Firm  
Log Measured From  
KB  
October 27, 2012  
7706  
7699

Log Date  
Log Interval  
Log Units  
Bottom Logged Interval

Well  
County  
State  
Firm  
Log Measured From  
KB  
October 27, 2012  
7706  
7699

Company  
Field  
County  
State  
Firm  
Log Measured From  
KB  
October 27, 2012  
7706  
7699

Log Date  
Log Interval  
Log Units  
Bottom Logged Interval

Well  
County  
State  
Firm  
Log Measured From  
KB  
October 27, 2012  
7706  
7699

Company  
Field  
County  
State  
Firm  
Log Measured From  
KB  
October 27, 2012  
7706  
7699

Log Date  
Log Interval  
Log Units  
Bottom Logged Interval

Well  
County  
State  
Firm  
Log Measured From  
KB  
October 27, 2012  
7706  
7699

Company  
Field  
County  
State  
Firm  
Log Measured From  
KB  
October 27, 2012  
7706  
7699

Log Date  
Log Interval  
Log Units  
Bottom Logged Interval

Well  
County  
State  
Firm  
Log Measured From  
KB  
October 27, 2012  
7706  
7699

Company  
Field  
County  
State  
Firm  
Log Measured From  
KB  
October 27, 2012  
7706  
7699

Log Date  
Log Interval  
Log Units  
Bottom Logged Interval

Well  
County  
State  
Firm  
Log Measured From  
KB  
October 27, 2012  
7706  
7699

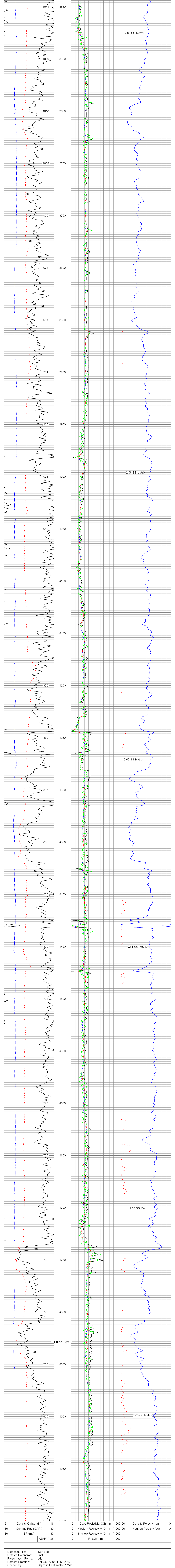
Company  
Field  
County  
State  
Firm  
Log Measured From  
KB  
October 27, 2012  
7706  
7699

All interpretations are opinions based on inferences from electrical or other measurements and Pioneer Wireline Services, LLC cannot and does not guarantee the accuracy or correctness of any interpretation, and Pioneer Wireline Services, LLC will not be liable or responsible for any loss, costs, damages, or expenses incurred or sustained by anyone resulting from any interpretation made by any of our officers, agents or employees.

Comments

Annular volume calculated for 4.5" casing  
Ensign Drilling Rig 55  
Thank you for using Pioneer Energy Services.

Database File: 13116.db  
Dataset Pathname: final  
Presentation Format: pdfs  
Dataset Creation: Sat Oct 27 06:49:50 2012  
Charted by:



Database File: 13116.db  
Dataset Pathname: final  
Presentation Format: pdfs  
Dataset Creation: Sat Oct 27 06:49:50 2012  
Charted by:

