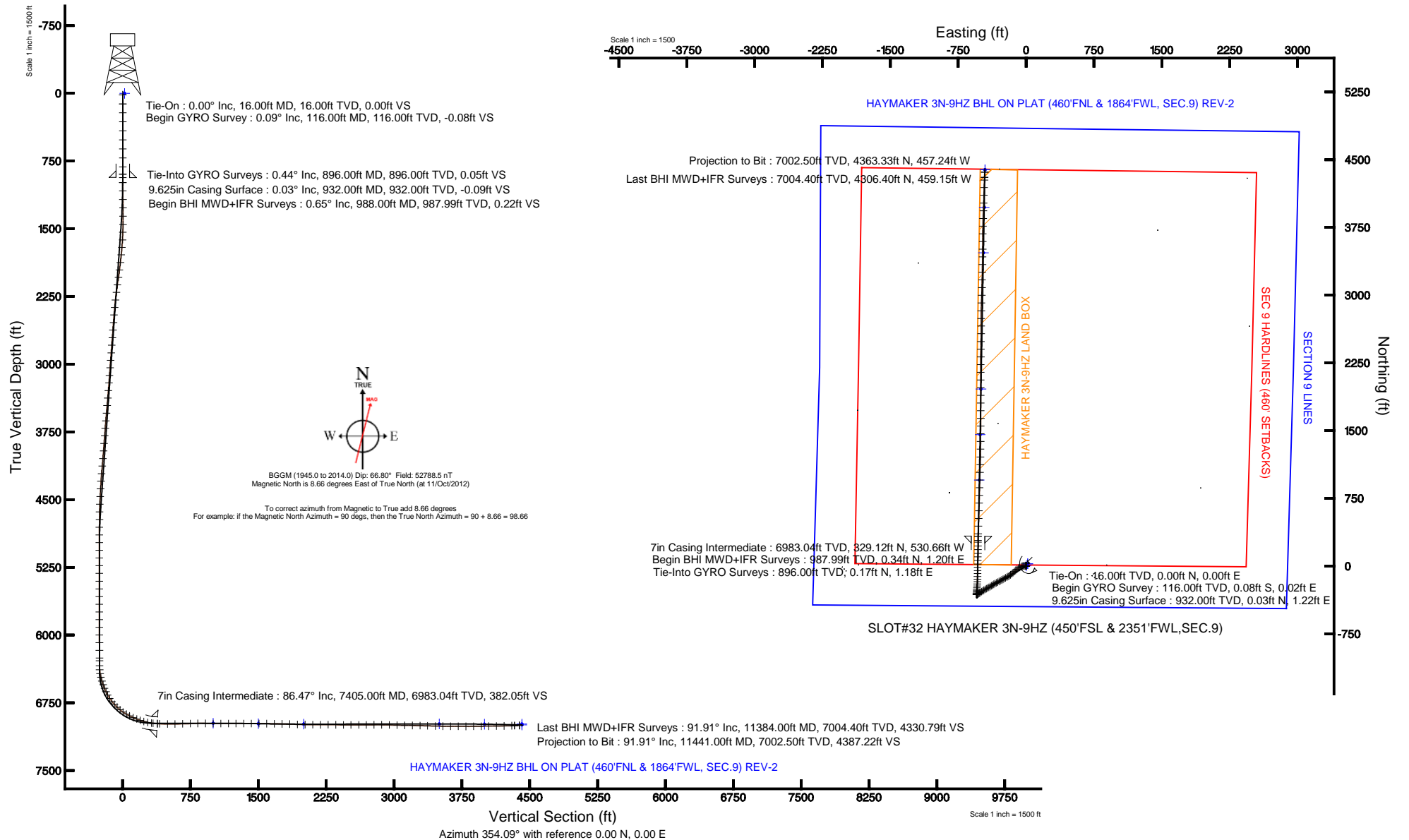


Location:	COLORADO	Slot:	SLOT#32 HAYMAKER 3N-9HZ (450'FSL & 2351'FWL,SEC.9)
Field:	WELD COUNTY (KERR MCGEE)	Well:	HAYMAKER 3N-9HZ
Facility:	SEC.09-T2N-R65W	Wellbore:	HAYMAKER 3N-9HZ PWB

Plot reference wellpath is HAYMAKER 3N-9HZ (REV-D.0) PWP	
True vertical depths are referenced to XTREME 24 (RKB)	Grid System: NAD83 / Lambert Colorado SP, Northern Zone (501), US feet
Measured depths are referenced to XTREME 24 (RKB)	North Reference: True north
XTREME 24 (RKB) to Mean Sea Level: 4897 feet	Scale: True distance
Mean Sea Level to Mud line (At Slot: SLOT#32 HAYMAKER 3N-9HZ (450'FSL & 2351'FWL,SEC.0)): 0 feet	Depths are in feet
Coordinates are in feet referenced to Slot	Created by: augunora on 19/Nov/2012





# Actual Wellpath Report

HAYMAKER 3N-9HZ AWP

Page 1 of 7



## REFERENCE WELLPATH IDENTIFICATION

Operator	KERR-MCGEE OIL & GAS ONSHORE LP	Slot	SLOT#32 HAYMAKER 3N-9HZ (450'FSL & 2351'FWL,SEC.9)
Area	COLORADO	Well	HAYMAKER 3N-9HZ
Field	WELD COUNTY (KERR MCGEE)	Wellbore	HAYMAKER 3N-9HZ AWB
Facility	SEC.09-T2N-R65W		

## REPORT SETUP INFORMATION

Projection System	NAD83 / Lambert Colorado SP, Northern Zone (501), US feet	Software System	WellArchitect® 3.0.0
North Reference	True	User	Augunora
Scale	0.999958	Report Generated	19/Nov/2012 at 13:01
Convergence at slot	0.54° East	Database/Source file	WA_ANADARKO/HAYMAKER_3N-9HZ_AWB.xml

## WELLPATH LOCATION

	Local coordinates		Grid coordinates		Geographic coordinates	
	North[ft]	East[ft]	Easting[US ft]	Northing[US ft]	Latitude	Longitude
Slot Location	163.60	1885.64	3232030.87	1297556.87	40°08'49.945"N	104°40'11.888"W
Facility Reference Pt			3230146.91	1297375.78	40°08'48.329"N	104°40'36.170"W
Field Reference Pt			3197771.84	1268891.29	40°04'09.600"N	104°47'36.000"W

## WELLPATH DATUM

Calculation method	Minimum curvature	XTREME 24 (RKB) to Facility Vertical Datum
Horizontal Reference Pt	Slot	XTREME 24 (RKB) to Mean Sea Level
Vertical Reference Pt	XTREME 24 (RKB)	XTREME 24 (RKB) to Mud Line at Slot (SLOT#32 HAYMAKER 3N-9HZ (450'FSL & 2351'
MD Reference Pt	XTREME 24 (RKB)	Section Origin
Field Vertical Reference	Mean Sea Level	Section Azimuth



# Actual Wellpath Report

HAYMAKER 3N-9HZ AWP

Page 2 of 7



## REFERENCE WELLPATH IDENTIFICATION

Operator	KERR-MCGEE OIL & GAS ONSHORE LP	Slot	SLOT#32 HAYMAKER 3N-9HZ (450'FSL & 2351'FWL,SEC.9)
Area	COLORADO	Well	HAYMAKER 3N-9HZ
Field	WELD COUNTY (KERR MCGEE)	Wellbore	HAYMAKER 3N-9HZ AWP
Facility	SEC.09-T2N-R65W		

## WELLPATH DATA (149 stations) † = interpolated/extrapolated station

MD [ft]	Inclination [°]	Azimuth [°]	TVD [ft]	Vert Sect [ft]	North [ft]	East [ft]	Latitude	Longitude	DLS [°/100ft]	Comments
0.00†	0.000	165.850	0.00	0.00	0.00	0.00	40°08'49.945"N	104°40'11.888"W	0.00	
16.00	0.000	165.850	16.00	0.00	0.00	0.00	40°08'49.945"N	104°40'11.888"W	0.00	Tie-On
116.00	0.090	165.850	116.00	-0.08	-0.08	0.02	40°08'49.944"N	104°40'11.888"W	0.09	Begin GYRO Survey
216.00	0.190	249.160	216.00	-0.20	-0.21	-0.12	40°08'49.943"N	104°40'11.890"W	0.20	
316.00	0.130	55.100	316.00	-0.19	-0.21	-0.18	40°08'49.943"N	104°40'11.890"W	0.32	
416.00	0.090	223.850	416.00	-0.18	-0.20	-0.14	40°08'49.943"N	104°40'11.890"W	0.22	
516.00	0.160	62.050	516.00	-0.18	-0.19	-0.07	40°08'49.943"N	104°40'11.889"W	0.25	
616.00	0.250	45.050	616.00	0.01	0.03	0.21	40°08'49.945"N	104°40'11.885"W	0.11	
716.00	0.100	105.600	716.00	0.11	0.16	0.45	40°08'49.947"N	104°40'11.882"W	0.22	
816.00	0.420	60.110	816.00	0.23	0.32	0.85	40°08'49.948"N	104°40'11.877"W	0.36	
896.00	0.440	166.010	896.00	0.05	0.17	1.18	40°08'49.947"N	104°40'11.873"W	0.86	Tie-Into GYRO Surveys
988.00	0.650	353.050	987.99	0.22	0.34	1.20	40°08'49.948"N	104°40'11.873"W	1.18	Begin BHI MWD+IFR Surveys
1081.00	0.940	292.610	1080.99	1.11	1.16	0.43	40°08'49.956"N	104°40'11.882"W	0.90	
1175.00	3.160	271.270	1174.92	1.81	1.52	-2.87	40°08'49.960"N	104°40'11.925"W	2.46	
1268.00	4.650	269.010	1267.70	2.46	1.51	-9.20	40°08'49.960"N	104°40'12.007"W	1.61	
1362.00	6.500	269.240	1361.25	3.27	1.37	-18.34	40°08'49.959"N	104°40'12.124"W	1.97	
1456.00	7.890	260.220	1454.52	3.33	0.20	-30.01	40°08'49.947"N	104°40'12.275"W	1.90	
1541.00	8.410	251.150	1538.66	1.56	-2.80	-41.65	40°08'49.917"N	104°40'12.424"W	1.63	
1626.00	10.270	242.320	1622.53	-2.63	-8.32	-54.24	40°08'49.863"N	104°40'12.586"W	2.76	
1711.00	11.450	239.950	1706.01	-8.87	-16.07	-68.25	40°08'49.786"N	104°40'12.767"W	1.48	
1797.00	12.590	237.640	1790.12	-16.51	-25.36	-83.56	40°08'49.694"N	104°40'12.964"W	1.44	
1882.00	12.980	231.520	1873.02	-25.76	-36.26	-98.86	40°08'49.587"N	104°40'13.161"W	1.66	
1967.00	13.370	230.250	1955.78	-36.35	-48.48	-113.89	40°08'49.466"N	104°40'13.355"W	0.57	
2053.00	13.170	229.360	2039.49	-47.45	-61.22	-128.97	40°08'49.340"N	104°40'13.549"W	0.33	
2138.00	12.860	228.970	2122.30	-58.39	-73.74	-143.45	40°08'49.216"N	104°40'13.735"W	0.38	
2223.00	12.390	226.160	2205.25	-69.42	-86.27	-157.16	40°08'49.093"N	104°40'13.912"W	0.91	
2308.00	11.790	228.780	2288.36	-80.02	-98.30	-170.27	40°08'48.974"N	104°40'14.081"W	0.96	
2393.00	11.350	237.930	2371.64	-88.71	-108.47	-183.89	40°08'48.873"N	104°40'14.256"W	2.22	
2478.00	10.970	240.350	2455.04	-95.64	-116.91	-198.01	40°08'48.790"N	104°40'14.438"W	0.71	
2564.00	10.650	241.450	2539.51	-101.97	-124.76	-212.10	40°08'48.712"N	104°40'14.619"W	0.44	
2649.00	10.810	241.400	2623.02	-108.05	-132.33	-226.00	40°08'48.637"N	104°40'14.798"W	0.19	
2734.00	11.280	239.710	2706.45	-114.54	-140.33	-240.18	40°08'48.558"N	104°40'14.981"W	0.67	
2819.00	10.490	240.030	2789.92	-121.11	-148.39	-254.06	40°08'48.479"N	104°40'15.160"W	0.93	
2905.00	11.270	243.160	2874.37	-127.28	-156.10	-268.34	40°08'48.402"N	104°40'15.343"W	1.14	
2990.00	11.460	241.530	2957.71	-133.47	-163.87	-283.17	40°08'48.326"N	104°40'15.534"W	0.44	
3075.00	11.230	243.540	3041.05	-139.59	-171.59	-298.01	40°08'48.249"N	104°40'15.725"W	0.54	
3160.00	11.240	242.130	3124.42	-145.58	-179.15	-312.74	40°08'48.175"N	104°40'15.915"W	0.32	
3246.00	10.600	242.840	3208.86	-151.56	-186.68	-327.19	40°08'48.100"N	104°40'16.101"W	0.76	
3331.00	11.530	238.710	3292.28	-158.02	-194.66	-341.40	40°08'48.021"N	104°40'16.284"W	1.44	
3416.00	11.180	238.920	3375.62	-165.14	-203.32	-355.72	40°08'47.936"N	104°40'16.469"W	0.41	
3501.00	10.590	236.140	3459.09	-172.29	-211.93	-369.26	40°08'47.851"N	104°40'16.643"W	0.93	
3586.00	10.690	237.750	3542.63	-179.43	-220.49	-382.42	40°08'47.766"N	104°40'16.812"W	0.37	
3672.00	10.710	241.030	3627.13	-186.08	-228.61	-396.15	40°08'47.686"N	104°40'16.989"W	0.71	
3757.00	11.640	241.640	3710.52	-192.43	-236.51	-410.61	40°08'47.608"N	104°40'17.175"W	1.10	
3842.00	11.070	239.500	3793.86	-199.08	-244.73	-425.19	40°08'47.527"N	104°40'17.363"W	0.83	



# Actual Wellpath Report

HAYMAKER 3N-9HZ AWP

Page 3 of 7



## REFERENCE WELLPATH IDENTIFICATION

Operator	KERR-MCGEE OIL & GAS ONSHORE LP	Slot	SLOT#32 HAYMAKER 3N-9HZ (450'FSL & 2351'FWL,SEC.9)
Area	COLORADO	Well	HAYMAKER 3N-9HZ
Field	WELD COUNTY (KERR MCGEE)	Wellbore	HAYMAKER 3N-9HZ AWP
Facility	SEC.09-T2N-R65W		

## WELLPATH DATA (149 stations)

MD [ft]	Inclination [°]	Azimuth [°]	TVD [ft]	Vert Sect [ft]	North [ft]	East [ft]	Latitude	Longitude	DLS [°/100ft]	Comments
3927.00	10.380	239.840	3877.37	-205.60	-252.72	-438.84	40°08'47.448"N	104°40'17.539"W	0.82	
4013.00	10.200	239.540	3961.99	-211.93	-260.47	-452.10	40°08'47.371"N	104°40'17.710"W	0.22	
4098.00	10.420	237.580	4045.61	-218.47	-268.41	-465.08	40°08'47.293"N	104°40'17.877"W	0.49	
4183.00	10.820	237.120	4129.16	-225.50	-276.86	-478.27	40°08'47.209"N	104°40'18.047"W	0.48	
4269.00	10.680	235.730	4213.65	-232.93	-285.73	-491.63	40°08'47.121"N	104°40'18.219"W	0.34	
4354.00	9.030	238.700	4297.39	-239.52	-293.63	-503.84	40°08'47.043"N	104°40'18.376"W	2.03	
4439.00	7.060	237.930	4381.55	-244.67	-299.87	-513.97	40°08'46.982"N	104°40'18.506"W	2.32	
4524.00	5.660	236.880	4466.03	-248.88	-304.93	-521.90	40°08'46.932"N	104°40'18.609"W	1.65	
4610.00	5.030	236.380	4551.65	-252.56	-309.34	-528.60	40°08'46.888"N	104°40'18.695"W	0.73	
4695.00	4.160	247.870	4636.38	-255.15	-312.56	-534.55	40°08'46.856"N	104°40'18.772"W	1.49	
4780.00	3.090	254.460	4721.21	-256.39	-314.34	-539.62	40°08'46.839"N	104°40'18.837"W	1.35	
4866.00	1.930	228.670	4807.13	-257.61	-315.91	-542.94	40°08'46.823"N	104°40'18.880"W	1.85	
4951.00	0.220	155.450	4892.11	-258.59	-317.01	-543.95	40°08'46.812"N	104°40'18.892"W	2.21	
5036.00	0.210	50.490	4977.11	-258.66	-317.06	-543.76	40°08'46.812"N	104°40'18.890"W	0.40	
5122.00	0.280	314.900	5063.11	-258.41	-316.81	-543.79	40°08'46.814"N	104°40'18.890"W	0.43	
5207.00	0.400	280.270	5148.11	-258.17	-316.61	-544.22	40°08'46.816"N	104°40'18.896"W	0.27	
5292.00	0.310	260.770	5233.11	-258.10	-316.59	-544.74	40°08'46.816"N	104°40'18.903"W	0.18	
5377.00	0.580	266.230	5318.10	-258.09	-316.66	-545.40	40°08'46.816"N	104°40'18.911"W	0.32	
5463.00	0.500	246.440	5404.10	-258.19	-316.84	-546.18	40°08'46.814"N	104°40'18.921"W	0.23	
5548.00	0.640	224.010	5489.10	-258.61	-317.33	-546.85	40°08'46.809"N	104°40'18.930"W	0.31	
5633.00	0.220	168.590	5574.09	-259.07	-317.83	-547.15	40°08'46.804"N	104°40'18.934"W	0.64	
5719.00	0.470	80.960	5660.09	-259.22	-317.93	-546.76	40°08'46.803"N	104°40'18.929"W	0.59	
5804.00	0.260	59.970	5745.09	-259.12	-317.78	-546.25	40°08'46.805"N	104°40'18.922"W	0.29	
5889.00	0.300	306.730	5830.09	-258.89	-317.55	-546.26	40°08'46.807"N	104°40'18.922"W	0.55	
5974.00	0.360	323.990	5915.09	-258.51	-317.20	-546.60	40°08'46.810"N	104°40'18.927"W	0.14	
6059.00	0.550	356.110	6000.09	-257.87	-316.58	-546.78	40°08'46.816"N	104°40'18.929"W	0.37	
6144.00	0.340	337.880	6085.08	-257.22	-315.94	-546.91	40°08'46.823"N	104°40'18.931"W	0.29	
6230.00	0.170	307.750	6171.08	-256.89	-315.63	-547.10	40°08'46.826"N	104°40'18.933"W	0.25	
6315.00	0.280	309.190	6256.08	-256.65	-315.42	-547.36	40°08'46.828"N	104°40'18.937"W	0.13	
6345.00	0.340	314.200	6286.08	-256.53	-315.31	-547.49	40°08'46.829"N	104°40'18.938"W	0.22	
6401.00	0.370	312.180	6342.08	-256.27	-315.07	-547.74	40°08'46.831"N	104°40'18.941"W	0.06	
6444.00	4.190	358.060	6385.04	-254.60	-313.41	-547.89	40°08'46.848"N	104°40'18.943"W	9.17	
6487.00	9.040	3.350	6427.74	-249.70	-308.46	-547.75	40°08'46.897"N	104°40'18.941"W	11.36	
6529.00	14.010	3.430	6468.88	-241.42	-300.09	-547.25	40°08'46.979"N	104°40'18.935"W	11.83	
6572.00	17.520	1.780	6510.26	-229.87	-288.42	-546.74	40°08'47.095"N	104°40'18.928"W	8.23	
6614.00	19.180	3.710	6550.12	-216.80	-275.22	-546.10	40°08'47.225"N	104°40'18.920"W	4.21	
6657.00	22.470	4.430	6590.31	-201.75	-259.97	-545.01	40°08'47.376"N	104°40'18.906"W	7.67	
6700.00	25.690	5.030	6629.56	-184.52	-242.49	-543.55	40°08'47.549"N	104°40'18.887"W	7.51	
6742.00	29.700	4.900	6666.74	-165.36	-223.05	-541.87	40°08'47.741"N	104°40'18.866"W	9.55	
6785.00	33.690	4.950	6703.32	-143.18	-200.54	-539.93	40°08'47.963"N	104°40'18.841"W	9.28	
6828.00	38.380	2.800	6738.08	-118.26	-175.31	-538.24	40°08'48.212"N	104°40'18.819"W	11.30	
6870.00	42.750	359.980	6769.98	-91.18	-148.02	-537.61	40°08'48.482"N	104°40'18.811"W	11.28	
6913.00	47.450	1.340	6800.33	-60.94	-117.57	-537.25	40°08'48.783"N	104°40'18.806"W	11.16	
6956.00	50.550	1.690	6828.54	-28.77	-85.14	-536.39	40°08'49.104"N	104°40'18.795"W	7.24	
6998.00	55.270	0.660	6853.86	4.46	-51.65	-535.71	40°08'49.435"N	104°40'18.786"W	11.41	



# Actual Wellpath Report

HAYMAKER 3N-9HZ AWP

Page 4 of 7



## REFERENCE WELLPATH IDENTIFICATION

Operator	KERR-MCGEE OIL & GAS ONSHORE LP	Slot	SLOT#32 HAYMAKER 3N-9HZ (450'FSL & 2351'FWL,SEC.9)
Area	COLORADO	Well	HAYMAKER 3N-9HZ
Field	WELD COUNTY (KERR MCGEE)	Wellbore	HAYMAKER 3N-9HZ AWP
Facility	SEC.09-T2N-R65W		

## WELLPATH DATA (149 stations) † = interpolated/extrapolated station

MD [ft]	Inclination [°]	Azimuth [°]	TVD [ft]	Vert Sect [ft]	North [ft]	East [ft]	Latitude	Longitude	DLS [°/100ft]	Comments
7041.00	59.120	0.680	6877.15	40.36	-15.52	-535.29	40°08'49.792"N	104°40'18.781"W	8.95	
7083.00	63.300	0.360	6897.37	76.92	21.28	-534.95	40°08'50.155"N	104°40'18.777"W	9.97	
7126.00	66.600	1.280	6915.58	115.59	60.23	-534.39	40°08'50.540"N	104°40'18.770"W	7.92	
7169.00	68.300	2.160	6932.07	154.95	99.92	-533.20	40°08'50.932"N	104°40'18.754"W	4.38	
7211.00	71.480	1.600	6946.51	194.01	139.33	-531.91	40°08'51.322"N	104°40'18.738"W	7.67	
7254.00	73.830	1.060	6959.33	234.72	180.36	-530.95	40°08'51.727"N	104°40'18.725"W	5.60	
7296.00	77.620	359.940	6969.68	275.15	221.06	-530.60	40°08'52.129"N	104°40'18.721"W	9.39	
7339.00	82.410	359.550	6977.13	317.28	263.39	-530.79	40°08'52.548"N	104°40'18.723"W	11.18	
7359.00	84.500	359.800	6979.41	337.05	283.26	-530.91	40°08'52.744"N	104°40'18.725"W	10.52	
7405.00†	86.466	0.816	6983.04	382.63	329.12	-530.66	40°08'53.197"N	104°40'18.722"W	4.81	7" Casing Point
7432.00	87.620	1.410	6984.43	409.39	356.07	-530.13	40°08'53.464"N	104°40'18.715"W	4.81	
7518.00	88.980	2.280	6986.98	494.54	441.99	-527.37	40°08'54.313"N	104°40'18.679"W	1.88	
7603.00	91.170	2.060	6986.87	578.68	526.92	-524.15	40°08'55.152"N	104°40'18.638"W	2.59	
7688.00	91.500	1.420	6984.89	662.89	611.86	-521.57	40°08'55.991"N	104°40'18.605"W	0.85	
7773.00	91.890	2.240	6982.37	747.06	696.78	-518.86	40°08'56.831"N	104°40'18.570"W	1.07	
7858.00	90.950	1.620	6980.27	831.22	781.70	-515.99	40°08'57.670"N	104°40'18.533"W	1.32	
7944.00	88.890	1.580	6980.39	916.47	867.66	-513.59	40°08'58.519"N	104°40'18.502"W	2.40	
8029.00	89.080	0.520	6981.89	1000.81	952.64	-512.03	40°08'59.359"N	104°40'18.482"W	1.27	
8114.00	91.070	2.430	6981.78	1085.08	1037.60	-509.85	40°09'00.199"N	104°40'18.454"W	3.24	
8199.00	90.460	1.630	6980.65	1169.25	1122.54	-506.84	40°09'01.038"N	104°40'18.415"W	1.18	
8284.00	89.500	1.100	6980.68	1253.55	1207.51	-504.81	40°09'01.878"N	104°40'18.389"W	1.29	
8370.00	90.180	1.180	6980.92	1338.88	1293.49	-503.10	40°09'02.727"N	104°40'18.367"W	0.80	
8455.00	88.900	359.770	6981.60	1423.34	1378.48	-502.40	40°09'03.567"N	104°40'18.358"W	2.24	
8540.00	90.030	0.130	6982.39	1507.88	1463.48	-502.47	40°09'04.407"N	104°40'18.359"W	1.40	
8625.00	89.630	1.760	6982.65	1592.25	1548.46	-501.07	40°09'05.247"N	104°40'18.341"W	1.97	
8711.00	89.260	359.580	6983.48	1677.66	1634.45	-500.06	40°09'06.097"N	104°40'18.328"W	2.57	
8796.00	88.270	359.580	6985.31	1762.24	1719.43	-500.69	40°09'06.936"N	104°40'18.336"W	1.16	
8881.00	88.080	359.560	6988.02	1846.80	1804.38	-501.32	40°09'07.776"N	104°40'18.344"W	0.22	
8966.00	88.350	0.670	6990.67	1931.28	1889.34	-501.15	40°09'08.616"N	104°40'18.342"W	1.34	
9051.00	88.540	359.590	6992.97	2015.76	1974.30	-500.96	40°09'09.455"N	104°40'18.340"W	1.29	
9137.00	89.470	0.010	6994.47	2101.31	2060.29	-501.26	40°09'10.305"N	104°40'18.343"W	1.19	
9222.00	89.780	0.140	6995.02	2185.83	2145.29	-501.15	40°09'11.145"N	104°40'18.342"W	0.40	
9307.00	90.460	0.700	6994.84	2270.30	2230.28	-500.53	40°09'11.985"N	104°40'18.334"W	1.04	
9393.00	89.290	359.750	6995.03	2355.80	2316.28	-500.19	40°09'12.835"N	104°40'18.330"W	1.75	
9478.00	89.040	0.690	6996.27	2440.29	2401.27	-499.86	40°09'13.674"N	104°40'18.326"W	1.14	
9563.00	89.900	1.910	6997.06	2524.60	2486.24	-497.93	40°09'14.514"N	104°40'18.301"W	1.76	
9649.00	90.210	1.260	6996.97	2609.85	2572.21	-495.55	40°09'15.364"N	104°40'18.270"W	0.84	
9734.00	90.550	359.130	6996.41	2694.35	2657.20	-495.27	40°09'16.204"N	104°40'18.266"W	2.54	
9819.00	90.730	0.000	6995.46	2778.94	2742.19	-495.91	40°09'17.043"N	104°40'18.275"W	1.05	
9904.00	89.410	1.250	6995.36	2863.38	2827.18	-494.98	40°09'17.883"N	104°40'18.263"W	2.14	
9990.00	88.120	1.590	6997.21	2948.64	2913.14	-492.85	40°09'18.733"N	104°40'18.235"W	1.55	
10075.00	88.670	1.990	6999.59	3032.82	2998.06	-490.20	40°09'19.572"N	104°40'18.201"W	0.80	
10160.00	88.800	1.640	7001.47	3117.02	3083.00	-487.51	40°09'20.411"N	104°40'18.167"W	0.44	
10246.00	89.470	1.230	7002.77	3202.29	3168.96	-485.35	40°09'21.261"N	104°40'18.139"W	0.91	
10331.00	88.180	1.010	7004.51	3286.61	3253.92	-483.69	40°09'22.100"N	104°40'18.117"W	1.54	





# Actual Wellpath Report

HAYMAKER 3N-9HZ AWP

Page 5 of 7



## REFERENCE WELLPATH IDENTIFICATION

Operator	KERR-MCGEE OIL & GAS ONSHORE LP	Slot	SLOT#32 HAYMAKER 3N-9HZ (450'FSL & 2351'FWL,SEC.9)
Area	COLORADO	Well	HAYMAKER 3N-9HZ
Field	WELD COUNTY (KERR MCGEE)	Wellbore	HAYMAKER 3N-9HZ AWP
Facility	SEC.09-T2N-R65W		

## WELLPATH DATA (149 stations)

MD [ft]	Inclination [°]	Azimuth [°]	TVD [ft]	Vert Sect [ft]	North [ft]	East [ft]	Latitude	Longitude	DLS [°/100ft]	Comments
10416.00	88.520	0.930	7006.96	3370.95	3338.88	-482.25	40°09'22.940"N	104°40'18.099"W	0.41	
10502.00	88.760	0.590	7009.00	3456.33	3424.84	-481.11	40°09'23.789"N	104°40'18.084"W	0.48	
10587.00	89.010	0.860	7010.65	3540.74	3509.82	-480.04	40°09'24.629"N	104°40'18.070"W	0.43	
10672.00	89.600	359.970	7011.68	3625.20	3594.81	-479.42	40°09'25.469"N	104°40'18.063"W	1.26	
10757.00	89.720	1.200	7012.19	3709.64	3679.80	-478.56	40°09'26.309"N	104°40'18.051"W	1.45	
10843.00	89.530	0.880	7012.75	3794.99	3765.79	-476.99	40°09'27.159"N	104°40'18.031"W	0.43	
10928.00	91.070	2.000	7012.30	3879.28	3850.76	-474.86	40°09'27.998"N	104°40'18.004"W	2.24	
11013.00	90.960	2.310	7010.80	3963.41	3935.68	-471.66	40°09'28.838"N	104°40'17.963"W	0.39	
11098.00	90.120	2.010	7010.00	4047.54	4020.62	-468.46	40°09'29.677"N	104°40'17.921"W	1.05	
11184.00	90.760	1.770	7009.34	4132.73	4106.57	-465.62	40°09'30.526"N	104°40'17.885"W	0.79	
11269.00	91.430	1.620	7007.71	4216.95	4191.51	-463.11	40°09'31.366"N	104°40'17.853"W	0.81	
11354.00	91.750	2.250	7005.35	4301.11	4276.43	-460.24	40°09'32.205"N	104°40'17.816"W	0.83	
11384.00	91.910	1.920	7004.40	4330.80	4306.40	-459.15	40°09'32.501"N	104°40'17.802"W	1.22	Last BHI MWD+IFR Surveys
11441.00	91.910	1.920	7002.50	4387.23	4363.33	-457.24	40°09'33.064"N	104°40'17.777"W	0.00	Projection to Bit

## HOLE & CASING SECTIONS - Ref Wellbore: HAYMAKER 3N-9HZ AWP Ref Wellpath: HAYMAKER 3N-9HZ AWP

String/Diameter	Start MD [ft]	End MD [ft]	Interval [ft]	Start TVD [ft]	End TVD [ft]	Start N/S [ft]	Start E/W [ft]	End N/S [ft]	End E/W [ft]
13.5in Open Hole	16.00	932.00	916.00	16.00	932.00	0.00	0.00	0.03	1.22
9.625in Casing Surface	16.00	932.00	916.00	16.00	932.00	0.00	0.00	0.03	1.22
8.75in Open Hole	932.00	7415.00	6483.00	932.00	6983.62	0.03	1.22	339.10	-530.50
7in Casing Intermediate	16.00	7405.00	7389.00	16.00	6983.04	0.00	0.00	329.12	-530.66
6.125in Open Hole	7405.00	11441.00	4036.00	6983.04	7002.50	329.12	-530.66	4363.33	-457.24



# Actual Wellpath Report

HAYMAKER 3N-9HZ AWP

Page 6 of 7



## REFERENCE WELLPATH IDENTIFICATION

Operator	KERR-MCGEE OIL & GAS ONSHORE LP	Slot	SLOT#32 HAYMAKER 3N-9HZ (450'FSL & 2351'FWL,SEC.9)
Area	COLORADO	Well	HAYMAKER 3N-9HZ
Field	WELD COUNTY (KERR MCGEE)	Wellbore	HAYMAKER 3N-9HZ AWP
Facility	SEC.09-T2N-R65W		

## TARGETS

Name	MD [ft]	TVD [ft]	North [ft]	East [ft]	Grid East [US ft]	Grid North [US ft]	Latitude	Longitude	Shape
SECTION 9 LINES		0.00	23.38	18.95	3232049.59	1297580.42	40°08'50.176"N	104°40'11.644"W	polygon
HAYMAKER 3N-9HZ TARGET 2		6978.00	951.83	-516.58	3231505.42	1298503.79	40°08'59.351"N	104°40'18.540"W	point
HAYMAKER 3N-9HZ TARGET 3		6983.00	1455.45	-507.52	3231509.77	1299007.45	40°09'04.328"N	104°40'18.424"W	point
HAYMAKER 3N-9HZ TARGET 7		6986.00	3469.91	-471.30	3231527.13	1301022.07	40°09'24.235"N	104°40'17.958"W	point
HAYMAKER 3N-9HZ BHL ON PLAT (460'FNL & 1864'FWL, SEC.9) REV-1		6987.00	4389.78	-454.83	3231534.99	1301942.01	40°09'33.325"N	104°40'17.746"W	point
HAYMAKER 3N-9HZ TARGET 4		6988.00	1959.06	-498.47	3231514.10	1299511.10	40°09'09.305"N	104°40'18.307"W	point
HAYMAKER 3N-9HZ TARGET 8		6989.00	3973.52	-462.26	3231531.45	1301525.72	40°09'29.212"N	104°40'17.842"W	point
HAYMAKER 3N-9HZ BHL ON PLAT (460'FNL & 1864'FWL, SEC.9) REV-2		6997.00	4389.80	-454.80	3231535.02	1301942.03	40°09'33.325"N	104°40'17.746"W	point
HAYMAKER 3N-9HZ LAND BOX		7100.00	0.00	0.00	3232030.87	1297556.87	40°08'49.945"N	104°40'11.888"W	polygon
SEC 9 HARDLINES (460' SETBACKS)		7200.00	23.38	18.95	3232049.59	1297580.42	40°08'50.176"N	104°40'11.644"W	polygon

## WELLPATH COMPOSITION - Ref Wellbore: HAYMAKER 3N-9HZ AWP Ref Wellpath: HAYMAKER 3N-9HZ AWP

Start MD [ft]	End MD [ft]	Positional Uncertainty Model	Log Name/Comment	Wellbore
16.00	896.00	Generic gyro - continuous (Standard)	GYRODATA SURVEYS <116-896>	HAYMAKER 3N-9HZ
896.00	7359.00	NaviTrak (MAGCORR,IFR)	BHI MWD+IFR SURVEYS 8 3/4" HOLE <988-7359>	HAYMAKER 3N-9HZ
7359.00	11384.00	OnTrak (MAGCORR,IFR)	BHI MWD+IFR SURVEYS 6 1/8" HOLE <7432-11384>	HAYMAKER 3N-9HZ
11384.00	11441.00	Blind Drilling (std)	Projection to bit	HAYMAKER 3N-9HZ



# Actual Wellpath Report

HAYMAKER 3N-9HZ AWP

Page 7 of 7



## REFERENCE WELLPATH IDENTIFICATION

Operator	KERR-MCGEE OIL & GAS ONSHORE LP	Slot	SLOT#32 HAYMAKER 3N-9HZ (450'FSL & 2351'FWL,SEC.9)
Area	COLORADO	Well	HAYMAKER 3N-9HZ
Field	WELD COUNTY (KERR MCGEE)	Wellbore	HAYMAKER 3N-9HZ AWB
Facility	SEC.09-T2N-R65W		

## WELLPATH COMMENTS

MD [ft]	Inclination [°]	Azimuth [°]	TVD [ft]	Comment
16.00	0.000	165.850	16.00	Tie-On
116.00	0.090	165.850	116.00	Begin GYRO Survey
896.00	0.440	166.010	896.00	Tie-Into GYRO Surveys
988.00	0.650	353.050	987.99	Begin BHI MWD+IFR Surveys
7405.00	86.466	0.816	6983.04	7" Casing Point
11384.00	91.910	1.920	7004.40	Last BHI MWD+IFR Surveys
11441.00	91.910	1.920	7002.50	Projection to Bit