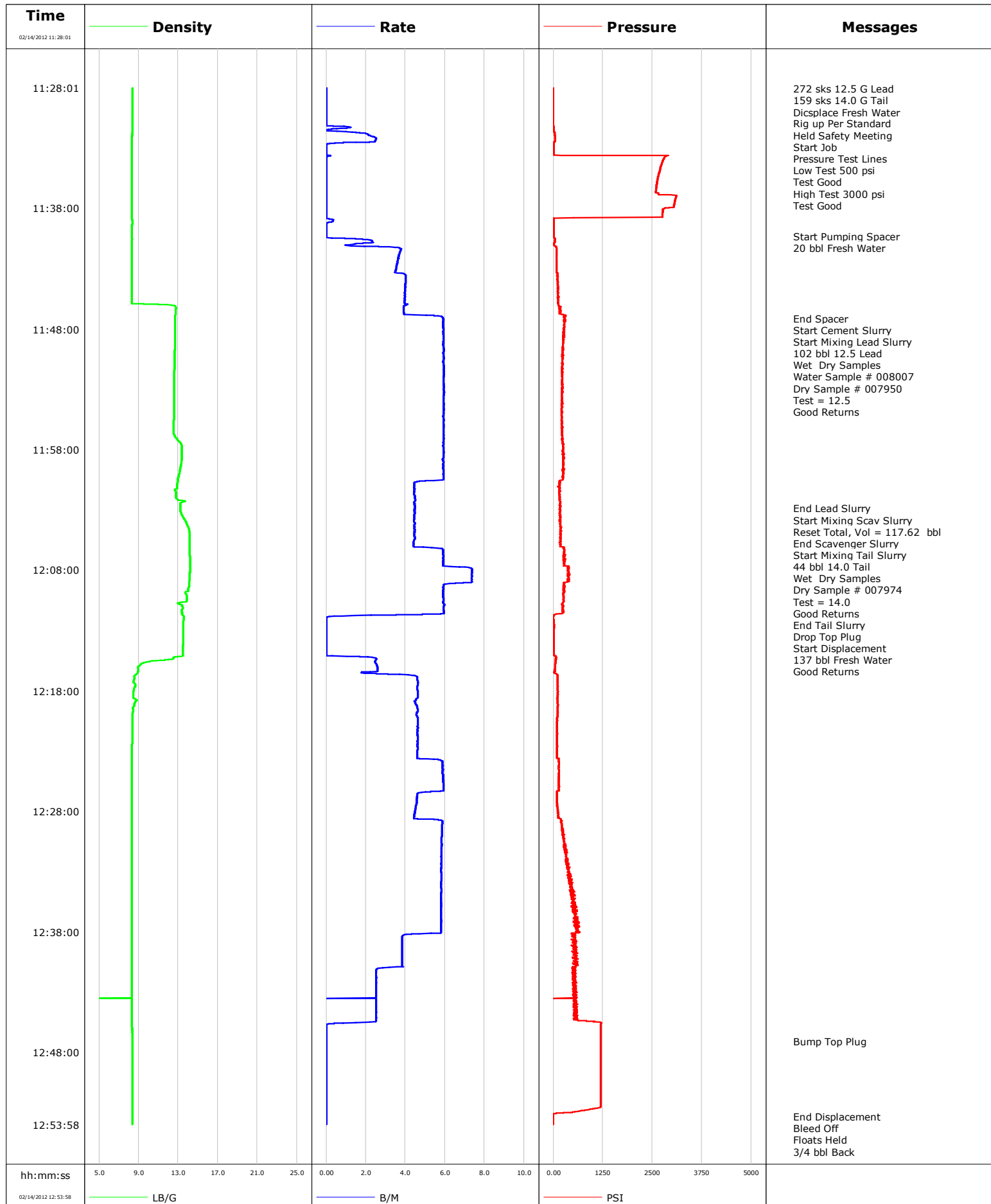


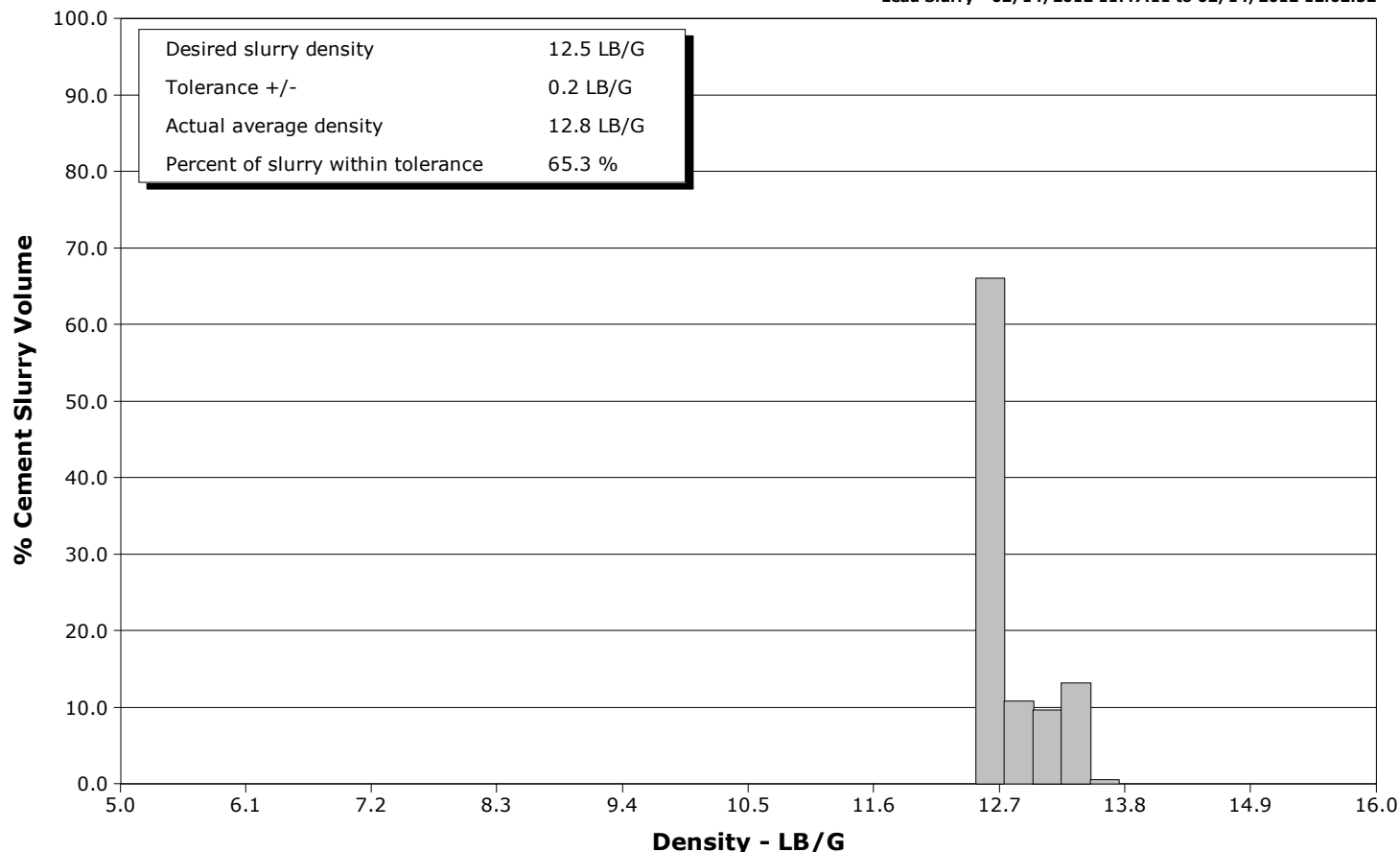
Well	EF16E-27 P	Client	Encana
Field	N. Parachute	SIR No.	BQMF-00860
Engineer	Jordan Moreland	Job Type	9 5/8 Surface
Country	United States	Job Date	02-14-2012



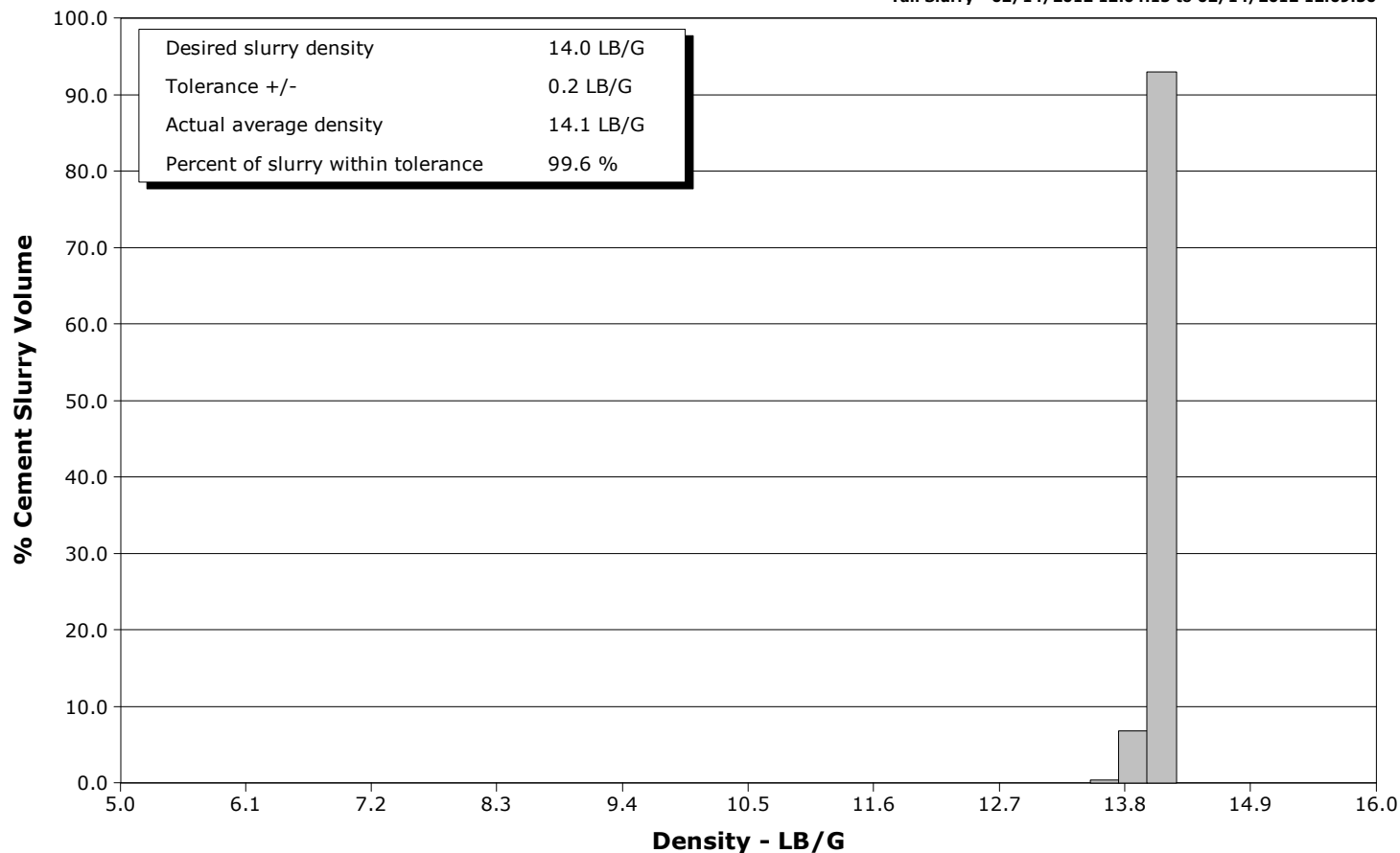
Well EF16E-27 P
Field N. Parachute
Engineer Jordan Moreland
Country United States

Client Encana
SIR No. BQMF-00860
Job Type 9 5/8 Surface
Job Date 02-14-2012

Lead Slurry - 02/14/2012 11:47:11 to 02/14/2012 12:02:52



Tail Slurry - 02/14/2012 12:04:15 to 02/14/2012 12:09:50



				Customer Encana				Job Number BQMF-00860					
Well EF16E-27 P			Location (legal)			Schlumberger Location GCO			Job Start Feb/14/2012				
Field N. Parachute		Formation Name/Type Shale		Deviation deg		Bit Size in		Well MD ft		Well TVD ft			
County Garfield		State/Province Colorado		BHP psi		BHST 100 degF		BHCT 87 degF		Pore Press. Gradient lb/gal			
Well Master 0631244198		API/UWI											
Rig Name Patterson 303		Drilled For Gas		Service Via Land		Casing/Liner							
						Depth, ft		Size, in		Weight, lb/ft			
Offshore Zone		Well Class New		Well Type Development		1819.0		9.6		36.0			
						0.0		0.0		0.0			
Drilling Fluid Type Bentonite		Max. Density lb/gal		Plastic Viscosity cP		Tubing/Drill Pipe							
						T/D		Depth, ft		Size, in			
Service Line Cementing		Job Type 9 5/8 Surface											
Max. Allowed Tub. Press psi		Max. Allowed Ann. Press psi		WH Connection Single Cement head		Perforations/Open Hole							
						Top, ft		Bottom, ft		shot/ft			
										No. of Shots			
										Total Interval ft			
Service Instructions 272 sks 12.5 G Lead 159 sks 14.0 G Tail Displace Fresh Water						ft		ft					
						ft		ft					
						ft		ft					
						Treat Down Casing		Displacement 137.0 bbl		Packer Type		Packer Depth ft	
						Tubing Vol. bbl		Casing Vol. 139.0 bbl		Annular Vol. 111.0 bbl		Openhole Vol. 261.0 bbl	
Casing/Tubing Secured <input checked="" type="checkbox"/>		1 Hole Vol. Circulated prior to Cement <input checked="" type="checkbox"/>		Casing Tools				Squeeze Job					
Lift Pressure psi				Shoe Type Guide				Squeeze Type					
Pipe Rotated <input type="checkbox"/>		Pipe Reciprocated <input type="checkbox"/>		Shoe Depth 1819.0 ft				Tool Type					
No. Centralizers		Top Plugs 1		Bottom Plugs		Stage Tool Type				Tool Depth ft			
Cement Head Type Single				Stage Tool Depth ft				Tail Pipe Size in					
Job Scheduled For Feb/14/2012		Arrived on Location Feb/14/2012		Leave Location Feb/14/2012		Collar Type Float				Tail Pipe Depth ft			
						Collar Depth 1774.0 ft				Sqz. Total Vol. bbl			
Date	Time 24-hr clock	Treating Pressure PSI	Flow Rate B/M	Density LB/G	Volume BBL	Message							
02/14/2012	11:28:01	-1	0.0	8.34	25.4	Started Acquisition							
02/14/2012	11:28:05	-1	0.0	8.34	25.4	272 sks 12.5 G Lead							
02/14/2012	11:28:08	-1	0.0	8.34	25.4	Start Job							
02/14/2012	11:28:10	-1	0.0	8.34	25.4	Pressure Test Lines							
02/14/2012	11:28:11	-1	0.0	8.34	25.4	Low Test 500 psi							
02/14/2012	11:28:12	-1	0.0	8.34	25.4	Test Good							
02/14/2012	11:30:01	-5	0.0	8.34	0.0								
02/14/2012	11:32:01	40	2.3	8.33	0.9								
02/14/2012	11:34:01	2770	0.0	8.33	2.3								
02/14/2012	11:36:01	2611	0.0	8.33	2.3								
02/14/2012	11:38:01	2805	0.0	8.33	2.3								
02/14/2012	11:40:01	1	0.0	8.33	2.4								
02/14/2012	11:40:19	1	0.0	8.33	2.4	Start Pumping Spacer							
02/14/2012	11:40:20	1	0.0	8.33	2.4	20 bbl Fresh Water							
02/14/2012	11:42:01	84	3.7	8.33	6.7								
02/14/2012	11:44:01	104	4.0	8.32	14.1								
02/14/2012	11:46:01	128	4.1	11.86	22.1								
02/14/2012	11:47:08	276	5.9	12.68	26.9	End Spacer							
02/14/2012	11:47:10	284	5.9	12.67	27.1	Start Cement Slurry							
02/14/2012	11:47:11	284	5.9	12.67	27.2	Start Mixing Lead Slurry							
02/14/2012	11:47:14	277	5.9	12.67	27.5	102 bbl 12.5 Lead							

Well			Field		Job Start		Customer		Job Number	
EF16E-27 P			N. Parachute		Feb/14/2012		Encana		BQMF-00860	
Date	Time 24-hr clock	Treating Pressure PSI		Flow Rate B/M	Density LB/G		Volume BBL		Message	
02/14/2012	11:48:01	253		5.9	12.67		32.1			
02/14/2012	11:50:01	253		5.9	12.63		44.0			
02/14/2012	11:52:01	227		5.9	12.58		55.8			
02/14/2012	11:54:01	231		5.9	12.57		67.7			
02/14/2012	11:56:01	210		5.9	12.53		79.5			
02/14/2012	11:58:01	253		5.9	13.35		91.4			
02/14/2012	12:00:01	249		5.9	13.10		103.2			
02/14/2012	12:02:01	160		4.5	12.78		113.0			
02/14/2012	12:02:52	170		4.5	13.23		116.8		End Lead Slurry	
02/14/2012	12:02:55	167		4.5	13.23		117.0		Start Mixing Scav Slurry	
02/14/2012	12:03:02	172		4.5	13.22		117.5		Reset Total, Vol = 117.62 bbl	
02/14/2012	12:04:01	179		4.4	13.78		121.9			
02/14/2012	12:04:15	178		4.5	13.88		123.0		End Scavenger Slurry	
02/14/2012	12:04:17	175		4.5	13.90		123.1		44 bbl 14.0 Tail	
02/14/2012	12:04:18	175		4.5	13.93		123.2		Good Returns	
02/14/2012	12:06:01	189		4.4	14.14		130.8			
02/14/2012	12:08:01	370		7.4	14.17		142.8			
02/14/2012	12:09:50	262		5.9	13.74		155.1		End Tail Slurry	
02/14/2012	12:10:01	253		5.9	13.82		156.2			
02/14/2012	12:11:43	17		3.5	13.42		166.2		Drop Top Plug	
02/14/2012	12:11:45	11		2.3	13.47		166.3		Start Displacement	
02/14/2012	12:11:46	11		1.4	13.51		166.3		137 bbl Fresh Water	
02/14/2012	12:12:01	-1		0.0	13.55		166.4			
02/14/2012	12:14:01	9		0.0	13.49		166.4			
02/14/2012	12:16:01	38		2.6	8.94		168.5			
02/14/2012	12:18:01	103		4.6	8.49		176.3			
02/14/2012	12:20:01	113		4.6	8.37		185.5			
02/14/2012	12:22:01	95		4.6	8.35		194.7			
02/14/2012	12:24:01	136		5.9	8.33		204.3			
02/14/2012	12:26:01	132		5.9	8.33		216.1			
02/14/2012	12:28:01	116		4.5	8.33		225.7			
02/14/2012	12:30:01	253		5.8	8.33		236.5			
02/14/2012	12:32:01	367		5.8	8.33		248.2			
02/14/2012	12:34:01	474		5.8	8.33		259.8			
02/14/2012	12:36:01	538		5.8	8.33		271.4			
02/14/2012	12:38:01	568		5.8	8.33		283.0			
02/14/2012	12:40:01	541		3.8	8.33		291.0			
02/14/2012	12:42:01	512		2.5	8.33		297.3			
02/14/2012	12:44:01	601		2.5	8.33		302.4			
02/14/2012	12:46:01	1195		0.0	8.33		306.2			
02/14/2012	12:47:04	1193		0.0	8.34		306.2		Bump Top Plug	
02/14/2012	12:48:01	1192		0.0	8.34		306.2			
02/14/2012	12:50:01	1192		0.0	8.34		306.2			
02/14/2012	12:52:01	1192		0.0	8.34		306.2			
02/14/2012	12:53:19	-3		0.0	8.34		306.2		End Displacement	
02/14/2012	12:53:21	-3		0.0	8.34		306.2		Bleed Off	

Well EF16E-27 P	Field N. Parachute	Job Start Feb/14/2012	Customer Encana	Job Number BQMF-00860
---------------------------	------------------------------	---------------------------------	---------------------------	---------------------------------

Post Job Summary

Average Pump Rates, bbl/min					Volume of Fluid Injected, bbl			
Slurry 4.8	N2	Mud	Maximum Rate 7.4		Total Slurry 306.2	Mud 0.0	Spacer 27.0	N2
Treating Pressure Summary, psi					Breakdown Fluid			
Maximum 3109	Final -2	Average 476	Bump Plug to	Breakdown	Type	Volume bbl		Density lb/gal
Avg. N2 Percent %		Designed Slurry Volume 0.0 bbl	Displacement 140.0 bbl	Mix Water Temp 65 degF	Cement Circulated to Surface? <input checked="" type="checkbox"/>		Volume bbl	
					Washed Thru Perfs <input type="checkbox"/>		To ft	
Customer or Authorized Representative Floyd Roberts			Schlumberger Supervisor Jordan Moreland			Circulation Lost <input type="checkbox"/>		Job Completed <input checked="" type="checkbox"/>
						-		-