

NOBLE ENERGY, INC.

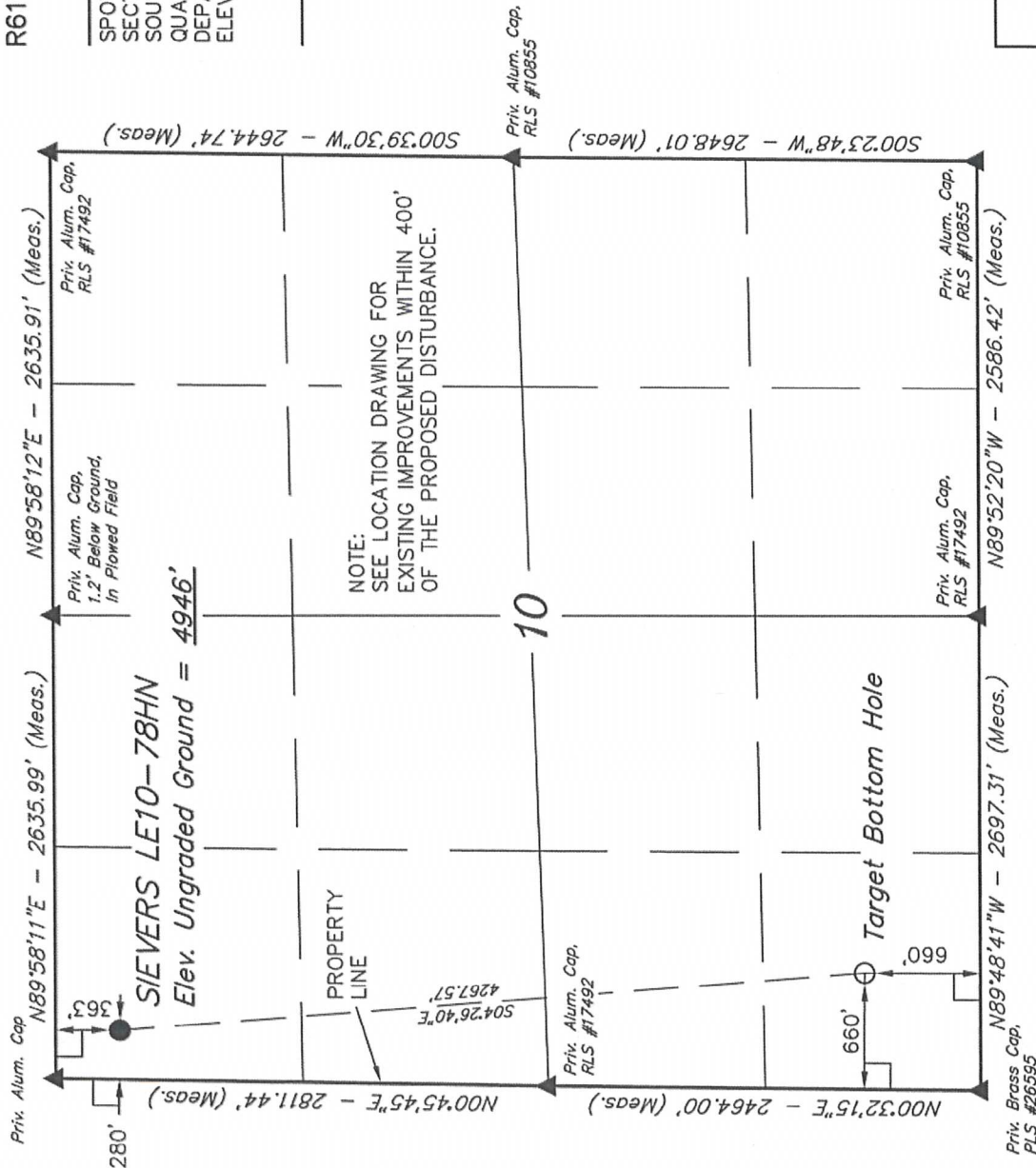
Well location, SIEVERS LE10-78HN, located as shown in the NW 1/4 NW 1/4 of Section 10, T8N, R61W, 6th P.M., Weld County, Colorado.

BASIS OF ELEVATION

SPOT ELEVATION LOCATED AT THE NORTHEAST CORNER OF SECTION 2, 19N, 86W, 6th P.M., TAKEN FROM THE GROVER SOUTH, QUADRANGLE, COLORADO, WELD COUNTY, 7.5 MINUTE QUAD (TOPOGRAPHICAL MAP) PUBLISHED BY THE UNITED STATES DEPARTMENT OF THE INTERIOR, GEOLOGICAL SURVEY. SAID ELEVATION IS MARKED AS BEING 5043 FEET.

BASIS OF BEARINGS

BASIS OF BEARINGS IS A G.P.S. OBSERVATION.



FEATURE TABLE		
EXISTING FEATURE	DIRECTION	LENGTH
PROPERTY LINE	WEST	280'

LEGEND:

$$| \quad = 90^\circ \text{ SYMBOL}$$

● = PROPOSED WELL HEAD.

▲ = SECTION CORNERS LOCATED.

NAD 83 (TARGET BOTTOM HOLE)		NAD 83 (SURFACE LOCATION)	
LATITUDE =	40°40'15.54"	LATITUDE =	40°40'57.58"
LONGITUDE =	104°11'54.55"	LONGITUDE =	104°11'58.87"

PDOP = 1.5

SCALE 1" = 1000'

PARTY

REFERENCES

DATE SURVEYED: 06-27-12	DATE DRAWN: 08-08-12
----------------------------	-------------------------

UINTAH ENGINEERING & LAND SURVEYING
85 SOUTH 200 EAST - VERNAL, UTAH 84078
(435) 789-1017

CERTIFICATE

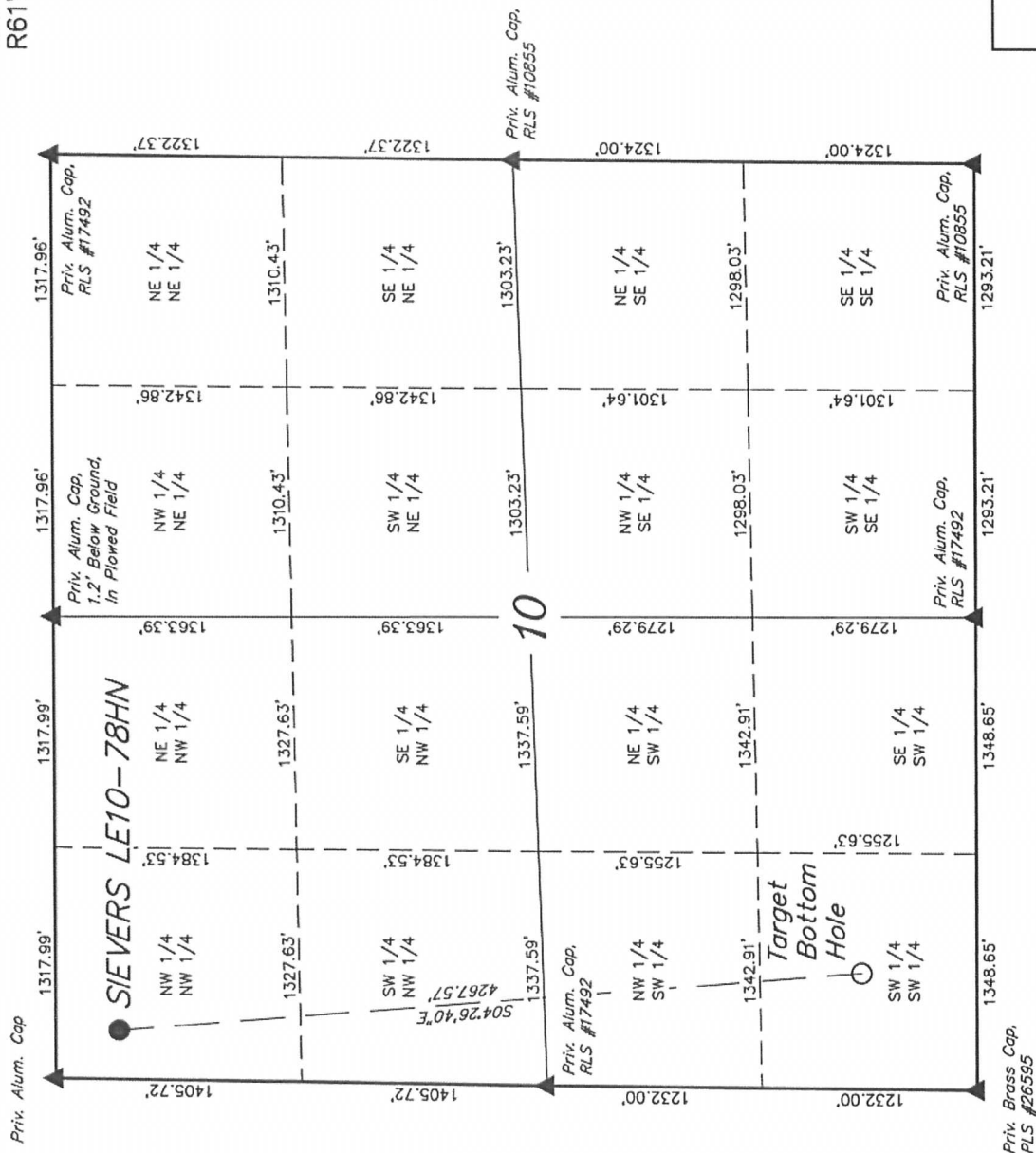
THIS IS TO CERTIFY THAT THE ABOVE DATA WAS OBTAINED FROM THE FIELD NOTES OF ACTUAL SURVEYS MADE BY ME OR UNDER MY SUPERVISION AND THAT THE SAME ARE TRUE AND CORRECT TO THE BEST OF MY KNOWLEDGE AND BELIEF.

REGISTERED LAND SURVEYOR
REGISTRATION NO. 17492
STATE OF COLORADO

UINTAH ENGINEERING & LAND SURVEYING
85 SOUTH 200 EAST - VERNAL, UTAH 84078
(435) 789-1017

NOBLE ENERGY, INC.

Well location, SIEVERS LE10-78HN, located as shown in the NW 1/4 NW 1/4 of Section 10, T8N, R61W, 6th P.M., Weld County, Colorado.



NO WELLS WITHIN SECTION

UTAH ENGINEERING & LAND SURVEYING
85 SOUTH 200 EAST - VERNAL, UTAH 84078

SCALE	1" = 1000'	DATE SURVEYED:	06-27-12	DATE DRAWN:	08-08-12
PARTY	DARREN SHANKS K.H. J.M.H.	REFERENCES			
WEATHER	HOT	G.L.O. PLAT			
		FILE			
		NOBLE ENERGY, INC.			