

Northern Region Drilling

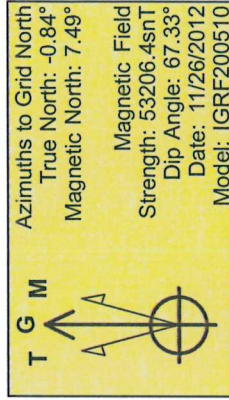
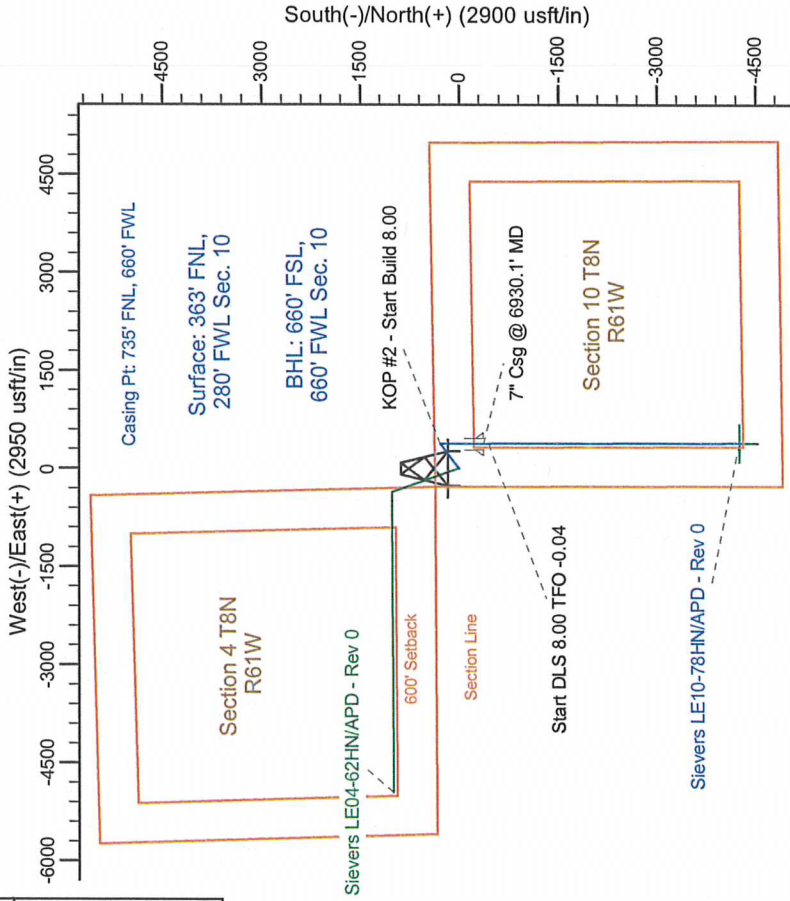
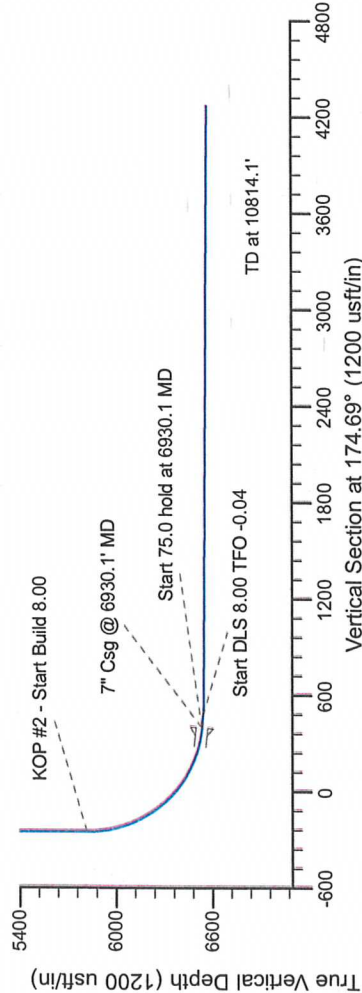
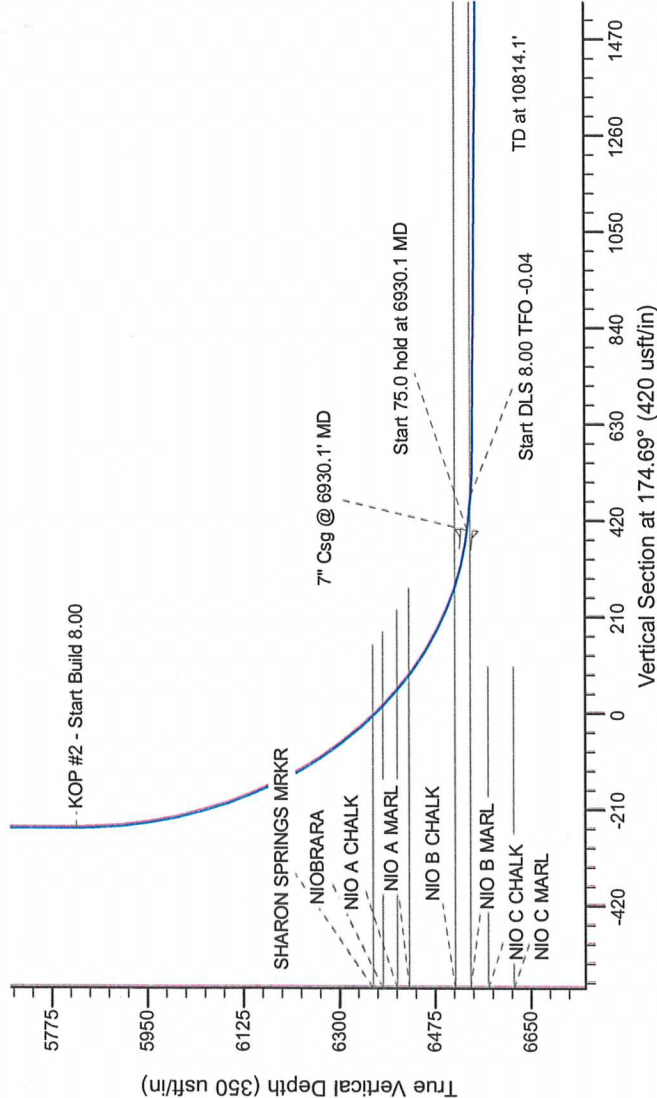
Project: Wattenberg Field
Site: LE (Sec.10-T08N-R61W) Weld County, CO
Well: Sievers LE10-78HN
Wellbore: Original Drilling
Design: APD - Rev 0

Geodetic System: US State Plane 1983
Datum: North American Datum 1983
Ellipsoid: GRS 1980
Zone: Colorado Northern Zone
System Datum: Mean Sea Level

SECTION DETAILS

Sec	MD	Inc	Azi	TVD	+N/-S	+E/-W	Dleg	TFace	VSec	Target
1	0.0	0.00	0.00	0.0	0.0	0.0	0.00	0.00	0.0	0.0
2	1800.0	0.00	0.00	1800.0	0.0	0.0	0.00	0.00	0.0	0.0
3	2280.0	12.00	52.84	2276.5	30.2	39.9	2.50	52.84	-26.4	0.0
4	4091.6	12.00	52.84	4048.5	257.8	340.1	0.00	0.00	-225.1	0.0
5	4571.6	0.00	0.00	4525.0	288.0	380.0	0.00	0.00	-251.6	0.0
6	5867.6	0.00	0.00	5821.0	288.0	380.0	0.00	0.00	-251.6	0.0
7	6930.1	85.00	179.81	6534.5	-365.8	382.2	8.00	179.81	399.6	0.0
8	7005.1	85.00	179.81	6541.0	-440.5	382.4	8.00	0.00	474.0	0.0
9	7062.6	89.60	179.81	6543.7	-497.9	382.6	8.00	-0.04	531.2	0.0
10	10814.1	89.60	179.81	6569.8	-4249.3	395.2	0.00	0.00	4267.6	0.0

Sievers LE10-78HN BHL 660'FSL, 660'FWL



WELL DETAILS: Sievers LE10-78HN			
North	East	Ground Level	Longitude
1494180.65	3360627.97	4946.0	-104.199686
Plan: APD - Rev 0 (Sievers LE10-78HN/Original Drilling)			
Created By: Carrie Willers	Date: 14:25, November 28 2012		
Checked:	Date:		
Reviewed:	Date:		
Approved:	Date:		