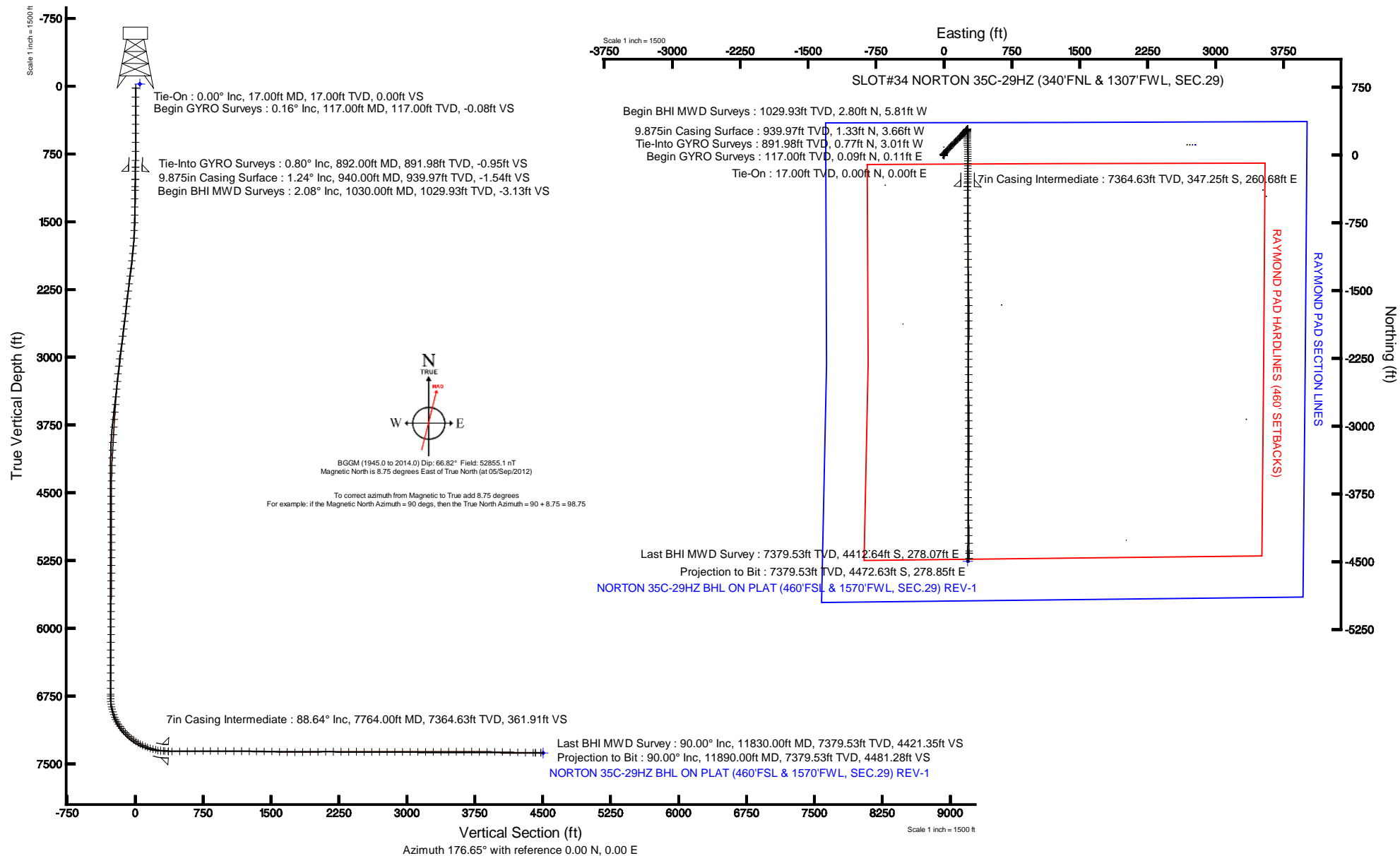


Location:	COLORADO	Slot:	SLOT#34 NORTON 35C-29HZ (340'FNL & 1307'FWL, SEC.29)
Field:	WELD COUNTY (KERR MCGEE)	Well:	NORTON 35C-29HZ
Facility:	SEC.29-T3N-R66W	Wellbore:	NORTON 35C-29HZ PWB

True vertical depths are referenced to XTREME 6 (RKB)	Grid System: NAD83 / Lambert Colorado SP, Northern Zone (501), US feet
Measured depths are referenced to XTREME 6 (RKB)	North Reference: True north
XTREME 6 (RKB) to Mean Sea Level: 4914 feet	Scale: True distance
Mean Sea Level to Mud line (At Slot: SLOTr34 NORTON 35C-29HZ (340'FNL & 1307'FWL, SEC.29)): 0 feet	Depths are in feet
Coordinates are in feet referenced to Slot	Created by: augnora on 07/Nov/2012





Actual Wellpath Report

NORTON 35C-29HZ AWP

Page 1 of 7



REFERENCE WELLPATH IDENTIFICATION

Operator	KERR-MCGEE OIL & GAS ONSHORE LP	Slot	SLOT#34 NORTON 35C-29HZ (340'FNL & 1307'FWL, SEC.29)
Area	COLORADO	Well	NORTON 35C-29HZ
Field	WELD COUNTY (KERR MCGEE)	Wellbore	NORTON 35C-29HZ AWB
Facility	SEC.29-T3N-R66W		

REPORT SETUP INFORMATION

Projection System	NAD83 / Lambert Colorado SP, Northern Zone (501), US feet	Software System	WellArchitect® 3.0.0
North Reference	True	User	Augunora
Scale	0.999957	Report Generated	07/Nov/2012 at 11:14
Convergence at slot	0.45° East	Database/Source file	WA_ANADARKO/NORTON_35C-29HZ_AWB.xml

WELLPATH LOCATION

	Local coordinates		Grid coordinates		Geographic coordinates	
	North[ft]	East[ft]	Easting[US ft]	Northing[US ft]	Latitude	Longitude
Slot Location	794.17	266.22	3193860.49	1317222.47	40°12'07.524"N	104°48'21.445"W
Facility Reference Pt			3193600.49	1316426.28	40°11'59.676"N	104°48'24.876"W
Field Reference Pt			3197771.84	1268891.29	40°04'09.600"N	104°47'36.000"W

WELLPATH DATUM

Calculation method	Minimum curvature	XTREME 6 (RKB) to Facility Vertical Datum
Horizontal Reference Pt	Slot	XTREME 6 (RKB) to Mean Sea Level
Vertical Reference Pt	XTREME 6 (RKB)	XTREME 6 (RKB) to Mud Line at Slot (SLOT#34 NORTON 35C-29HZ (340'FNL & 1307'FV
MD Reference Pt	XTREME 6 (RKB)	Section Origin
Field Vertical Reference	Mean Sea Level	Section Azimuth



Actual Wellpath Report

NORTON 35C-29HZ AWP

Page 2 of 7



REFERENCE WELLPATH IDENTIFICATION

Operator	KERR-MCGEE OIL & GAS ONSHORE LP	Slot	SLOT#34 NORTON 35C-29HZ (340'FNL & 1307'FWL, SEC.29)
Area	COLORADO	Well	NORTON 35C-29HZ
Field	WELD COUNTY (KERR MCGEE)	Wellbore	NORTON 35C-29HZ AWB
Facility	SEC.29-T3N-R66W		

WELLPATH DATA (165 stations) † = interpolated/extrapolated station

MD [ft]	Inclination [°]	Azimuth [°]	TVD [ft]	Vert Sect [ft]	North [ft]	East [ft]	Latitude	Longitude	DLS [°/100ft]	Comments
0.00†	0.000	49.390	0.00	0.00	0.00	0.00	40°12'07.524"N	104°48'21.445"W	0.00	
17.00	0.000	49.390	17.00	0.00	0.00	0.00	40°12'07.524"N	104°48'21.445"W	0.00	Tie-On
117.00	0.160	49.390	117.00	-0.08	0.09	0.11	40°12'07.525"N	104°48'21.444"W	0.16	Begin GYRO Surveys
217.00	0.060	155.990	217.00	-0.12	0.13	0.23	40°12'07.525"N	104°48'21.442"W	0.19	
317.00	0.230	135.290	317.00	0.08	-0.06	0.40	40°12'07.523"N	104°48'21.440"W	0.18	
417.00	0.130	224.850	417.00	0.31	-0.28	0.46	40°12'07.521"N	104°48'21.439"W	0.26	
517.00	0.350	246.240	517.00	0.49	-0.48	0.10	40°12'07.519"N	104°48'21.444"W	0.23	
617.00	0.600	267.660	616.99	0.58	-0.63	-0.71	40°12'07.518"N	104°48'21.454"W	0.30	
717.00	0.600	292.040	716.99	0.34	-0.45	-1.71	40°12'07.520"N	104°48'21.467"W	0.25	
817.00	0.520	325.560	816.98	-0.27	0.12	-2.46	40°12'07.525"N	104°48'21.477"W	0.33	
892.00	0.800	315.760	891.98	-0.96	0.77	-3.01	40°12'07.532"N	104°48'21.484"W	0.40	Tie-Into GYRO Surveys
1030.00	2.080	302.190	1029.93	-3.15	2.80	-5.81	40°12'07.552"N	104°48'21.520"W	0.95	Begin BHI MWD Surveys
1109.00	2.580	0.950	1108.88	-5.76	5.34	-6.99	40°12'07.577"N	104°48'21.535"W	2.95	
1151.00	2.170	357.890	1150.84	-7.50	7.08	-7.00	40°12'07.594"N	104°48'21.535"W	1.02	
1243.00	0.590	64.580	1242.82	-9.42	9.02	-6.64	40°12'07.613"N	104°48'21.531"W	2.19	
1334.00	0.550	64.690	1333.81	-9.76	9.41	-5.82	40°12'07.617"N	104°48'21.520"W	0.04	
1424.00	0.640	53.710	1423.81	-10.19	9.89	-5.03	40°12'07.622"N	104°48'21.510"W	0.16	
1509.00	1.880	47.670	1508.78	-11.32	11.11	-3.61	40°12'07.634"N	104°48'21.492"W	1.47	
1594.00	3.180	43.350	1593.70	-13.80	13.77	-0.96	40°12'07.660"N	104°48'21.457"W	1.54	
1679.00	4.390	40.510	1678.51	-17.75	17.96	2.77	40°12'07.701"N	104°48'21.409"W	1.44	
1764.00	6.140	42.200	1763.15	-23.26	23.80	7.94	40°12'07.759"N	104°48'21.343"W	2.07	
1850.00	7.550	39.550	1848.54	-30.59	31.56	14.62	40°12'07.836"N	104°48'21.257"W	1.68	
1935.00	8.940	40.540	1932.66	-39.41	40.89	22.47	40°12'07.928"N	104°48'21.155"W	1.64	
2019.00	10.690	45.810	2015.42	-49.17	51.28	32.30	40°12'08.031"N	104°48'21.029"W	2.34	
2105.00	10.410	41.800	2099.97	-59.82	62.63	43.20	40°12'08.143"N	104°48'20.888"W	0.91	
2190.00	10.300	40.520	2183.59	-70.67	74.13	53.26	40°12'08.257"N	104°48'20.759"W	0.30	
2275.00	10.150	39.140	2267.24	-81.64	85.72	62.92	40°12'08.371"N	104°48'20.634"W	0.34	
2360.00	10.190	45.870	2350.91	-92.03	96.76	73.05	40°12'08.480"N	104°48'20.504"W	1.40	
2445.00	9.720	45.720	2434.63	-101.60	107.01	83.58	40°12'08.581"N	104°48'20.368"W	0.55	
2530.00	9.680	44.950	2518.41	-111.01	117.07	93.77	40°12'08.681"N	104°48'20.237"W	0.16	
2615.00	10.430	42.660	2602.10	-121.07	127.79	104.03	40°12'08.787"N	104°48'20.104"W	1.00	
2700.00	10.630	42.360	2685.67	-131.84	139.24	114.52	40°12'08.900"N	104°48'19.969"W	0.24	
2783.00	11.150	46.830	2767.18	-142.29	150.39	125.54	40°12'09.010"N	104°48'19.827"W	1.19	
2867.00	11.590	46.510	2849.53	-152.88	161.75	137.58	40°12'09.122"N	104°48'19.672"W	0.53	
2952.00	11.900	46.500	2932.75	-163.98	173.66	150.13	40°12'09.240"N	104°48'19.510"W	0.36	
3037.00	10.280	43.570	3016.16	-174.77	185.19	161.72	40°12'09.354"N	104°48'19.361"W	2.02	
3121.00	8.530	44.360	3099.03	-184.04	195.08	171.24	40°12'09.452"N	104°48'19.238"W	2.09	
3207.00	8.130	44.130	3184.12	-192.41	204.00	179.93	40°12'09.540"N	104°48'19.126"W	0.47	
3292.00	7.810	42.830	3268.30	-200.44	212.55	188.04	40°12'09.624"N	104°48'19.022"W	0.43	
3377.00	7.260	43.210	3352.57	-208.10	220.70	195.65	40°12'09.705"N	104°48'18.924"W	0.65	
3462.00	6.560	43.580	3436.95	-215.08	228.13	202.67	40°12'09.778"N	104°48'18.833"W	0.83	
3547.00	6.140	42.380	3521.43	-221.54	235.01	209.08	40°12'09.846"N	104°48'18.750"W	0.52	
3632.00	5.660	42.310	3605.98	-227.62	241.46	214.97	40°12'09.910"N	104°48'18.675"W	0.56	
3717.00	5.270	42.340	3690.59	-233.25	247.45	220.42	40°12'09.969"N	104°48'18.604"W	0.46	
3802.00	4.880	40.250	3775.26	-238.58	253.09	225.39	40°12'10.025"N	104°48'18.540"W	0.51	



Actual Wellpath Report

NORTON 35C-29HZ AWP

Page 3 of 7



REFERENCE WELLPATH IDENTIFICATION

Operator	KERR-MCGEE OIL & GAS ONSHORE LP	Slot	SLOT#34 NORTON 35C-29HZ (340'FNL & 1307'FWL, SEC.29)
Area	COLORADO	Well	NORTON 35C-29HZ
Field	WELD COUNTY (KERR MCGEE)	Wellbore	NORTON 35C-29HZ AWB
Facility	SEC.29-T3N-R66W		

WELLPATH DATA (165 stations)

MD [ft]	Inclination [°]	Azimuth [°]	TVD [ft]	Vert Sect [ft]	North [ft]	East [ft]	Latitude	Longitude	DLS [°/100ft]	Comments
3887.00	4.680	41.090	3859.96	-243.65	258.47	230.00	40°12'10.078"N	104°48'18.481"W	0.25	
3972.00	4.440	39.990	3944.69	-248.51	263.60	234.39	40°12'10.129"N	104°48'18.424"W	0.30	
4057.00	4.150	39.660	4029.45	-253.13	268.49	238.47	40°12'10.177"N	104°48'18.372"W	0.34	
4142.00	4.270	40.290	4114.22	-257.65	273.27	242.48	40°12'10.224"N	104°48'18.320"W	0.15	
4228.00	2.980	47.900	4200.05	-261.35	277.21	246.21	40°12'10.263"N	104°48'18.272"W	1.60	
4313.00	1.490	39.060	4284.98	-263.54	279.55	248.55	40°12'10.287"N	104°48'18.242"W	1.79	
4398.00	1.270	29.030	4369.96	-265.15	281.23	249.70	40°12'10.303"N	104°48'18.227"W	0.38	
4483.00	1.240	13.870	4454.94	-266.82	282.95	250.38	40°12'10.320"N	104°48'18.218"W	0.39	
4568.00	0.820	76.780	4539.93	-267.80	283.98	251.19	40°12'10.330"N	104°48'18.208"W	1.33	
4653.00	0.710	100.970	4624.92	-267.77	284.02	252.30	40°12'10.331"N	104°48'18.193"W	0.40	
4739.00	0.520	99.930	4710.91	-267.55	283.85	253.21	40°12'10.329"N	104°48'18.182"W	0.22	
4824.00	0.030	269.130	4795.91	-267.46	283.79	253.56	40°12'10.328"N	104°48'18.177"W	0.65	
4909.00	0.190	190.990	4880.91	-267.32	283.65	253.51	40°12'10.327"N	104°48'18.178"W	0.22	
4994.00	0.520	204.260	4965.91	-266.84	283.16	253.33	40°12'10.322"N	104°48'18.180"W	0.40	
5079.00	0.540	202.100	5050.91	-266.14	282.43	253.02	40°12'10.315"N	104°48'18.184"W	0.03	
5164.00	0.260	36.530	5135.91	-265.93	282.22	252.98	40°12'10.313"N	104°48'18.185"W	0.93	
5249.00	0.330	34.960	5220.91	-266.27	282.57	253.24	40°12'10.316"N	104°48'18.181"W	0.08	
5334.00	0.220	3.640	5305.91	-266.62	282.94	253.39	40°12'10.320"N	104°48'18.179"W	0.21	
5420.00	0.220	318.090	5391.90	-266.91	283.22	253.29	40°12'10.323"N	104°48'18.181"W	0.20	
5505.00	0.800	38.710	5476.90	-267.48	283.81	253.55	40°12'10.329"N	104°48'18.177"W	0.93	
5590.00	0.750	39.940	5561.89	-268.32	284.70	254.28	40°12'10.337"N	104°48'18.168"W	0.06	
5675.00	0.340	6.240	5646.89	-268.98	285.38	254.66	40°12'10.344"N	104°48'18.163"W	0.59	
5760.00	0.940	68.280	5731.88	-269.44	285.88	255.34	40°12'10.349"N	104°48'18.154"W	0.98	
5845.00	0.910	70.620	5816.87	-269.84	286.37	256.62	40°12'10.354"N	104°48'18.138"W	0.06	
5931.00	0.600	54.750	5902.87	-270.27	286.85	257.64	40°12'10.359"N	104°48'18.125"W	0.43	
6016.00	0.470	49.880	5987.86	-270.71	287.33	258.27	40°12'10.363"N	104°48'18.117"W	0.16	
6101.00	0.440	43.370	6072.86	-271.14	287.80	258.76	40°12'10.368"N	104°48'18.110"W	0.07	
6186.00	0.460	5.520	6157.86	-271.70	288.37	259.01	40°12'10.374"N	104°48'18.107"W	0.34	
6272.00	0.770	57.550	6243.85	-272.32	289.03	259.53	40°12'10.380"N	104°48'18.100"W	0.71	
6357.00	0.340	88.550	6328.85	-272.58	289.34	260.27	40°12'10.383"N	104°48'18.091"W	0.60	
6442.00	0.150	128.410	6413.85	-272.50	289.28	260.61	40°12'10.383"N	104°48'18.086"W	0.29	
6527.00	0.300	249.860	6498.85	-272.36	289.13	260.49	40°12'10.381"N	104°48'18.088"W	0.47	
6611.00	0.510	280.720	6582.85	-272.39	289.13	259.91	40°12'10.381"N	104°48'18.095"W	0.35	
6696.00	0.320	8.180	6667.84	-272.72	289.43	259.57	40°12'10.384"N	104°48'18.100"W	0.69	
6759.00	0.420	356.770	6730.84	-273.12	289.84	259.59	40°12'10.388"N	104°48'18.099"W	0.20	
6780.00	0.360	352.330	6751.84	-273.26	289.98	259.57	40°12'10.390"N	104°48'18.100"W	0.32	
6810.00	0.350	156.320	6781.84	-273.27	289.99	259.60	40°12'10.390"N	104°48'18.099"W	2.34	
6840.00	3.500	178.100	6811.82	-272.27	288.99	259.67	40°12'10.380"N	104°48'18.098"W	10.59	
6870.00	7.090	181.430	6841.69	-269.51	286.22	259.65	40°12'10.352"N	104°48'18.099"W	12.01	
6900.00	10.870	183.020	6871.32	-264.85	281.54	259.45	40°12'10.306"N	104°48'18.101"W	12.63	
6930.00	13.900	181.210	6900.61	-258.45	275.11	259.23	40°12'10.243"N	104°48'18.104"W	10.18	
6960.00	16.830	180.090	6929.54	-250.52	267.17	259.15	40°12'10.164"N	104°48'18.105"W	9.82	
6990.00	19.910	178.980	6958.01	-241.08	257.71	259.23	40°12'10.071"N	104°48'18.104"W	10.33	
7020.00	23.150	179.510	6985.91	-230.09	246.71	259.37	40°12'09.962"N	104°48'18.102"W	10.82	
7050.00	26.670	179.530	7013.11	-217.47	234.07	259.48	40°12'09.837"N	104°48'18.101"W	11.73	



Actual Wellpath Report

NORTON 35C-29HZ AWP

Page 4 of 7



REFERENCE WELLPATH IDENTIFICATION

Operator	KERR-MCGEE OIL & GAS ONSHORE LP	Slot	SLOT#34 NORTON 35C-29HZ (340'FNL & 1307'FWL, SEC.29)
Area	COLORADO	Well	NORTON 35C-29HZ
Field	WELD COUNTY (KERR MCGEE)	Wellbore	NORTON 35C-29HZ AWB
Facility	SEC.29-T3N-R66W		

WELLPATH DATA (165 stations) † = interpolated/extrapolated station

MD [ft]	Inclination [°]	Azimuth [°]	TVD [ft]	Vert Sect [ft]	North [ft]	East [ft]	Latitude	Longitude	DLS [°/100ft]	Comments
7080.00	29.900	180.040	7039.53	-203.28	219.86	259.53	40°12'09.697"N	104°48'18.100"W	10.80	
7110.00	32.260	179.890	7065.22	-187.83	204.37	259.54	40°12'09.544"N	104°48'18.100"W	7.87	
7140.00	34.920	179.430	7090.21	-171.26	187.78	259.64	40°12'09.380"N	104°48'18.099"W	8.91	
7170.00	38.640	180.790	7114.23	-153.34	169.82	259.59	40°12'09.202"N	104°48'18.099"W	12.69	
7200.00	41.570	179.510	7137.18	-134.06	150.50	259.55	40°12'09.011"N	104°48'18.100"W	10.15	
7230.00	43.720	178.180	7159.24	-113.75	130.18	259.96	40°12'08.810"N	104°48'18.095"W	7.77	
7260.00	45.970	177.630	7180.51	-92.60	109.04	260.74	40°12'08.602"N	104°48'18.085"W	7.61	
7290.00	48.500	176.820	7200.88	-70.58	87.04	261.81	40°12'08.384"N	104°48'18.071"W	8.66	
7320.00	51.220	177.480	7220.22	-47.65	64.14	262.95	40°12'08.158"N	104°48'18.056"W	9.22	
7350.00	53.650	178.300	7238.51	-23.88	40.38	263.82	40°12'07.923"N	104°48'18.045"W	8.38	
7380.00	56.700	180.170	7255.64	0.71	15.76	264.14	40°12'07.680"N	104°48'18.041"W	11.38	
7410.00	60.390	179.890	7271.29	26.24	-9.83	264.13	40°12'07.427"N	104°48'18.041"W	12.33	
7440.00	62.830	180.290	7285.55	52.58	-36.22	264.09	40°12'07.166"N	104°48'18.042"W	8.22	
7470.00	65.400	180.180	7298.65	79.51	-63.21	263.98	40°12'06.899"N	104°48'18.043"W	8.57	
7500.00	67.740	180.410	7310.58	106.97	-90.73	263.83	40°12'06.627"N	104°48'18.045"W	7.83	
7530.00	69.260	180.310	7321.57	134.82	-118.64	263.66	40°12'06.352"N	104°48'18.047"W	5.08	
7560.00	71.110	179.940	7331.74	162.98	-146.86	263.60	40°12'06.073"N	104°48'18.048"W	6.27	
7590.00	74.080	180.120	7340.71	191.55	-175.49	263.58	40°12'05.790"N	104°48'18.048"W	9.92	
7620.00	76.840	181.020	7348.25	220.51	-204.52	263.29	40°12'05.503"N	104°48'18.052"W	9.65	
7650.00	79.570	180.850	7354.38	249.78	-233.88	262.81	40°12'05.213"N	104°48'18.058"W	9.12	
7680.00	82.260	180.940	7359.11	279.31	-263.50	262.35	40°12'04.920"N	104°48'18.064"W	8.97	
7710.00	85.640	180.850	7362.28	309.05	-293.32	261.88	40°12'04.625"N	104°48'18.070"W	11.27	
7726.00	87.220	181.360	7363.27	324.97	-309.29	261.58	40°12'04.468"N	104°48'18.074"W	10.37	
7762.00	88.610	181.360	7364.58	360.81	-345.25	260.72	40°12'04.112"N	104°48'18.085"W	3.86	
7764.00†	88.641	181.343	7364.63	362.80	-347.25	260.68	40°12'04.092"N	104°48'18.086"W	1.76	7" Casing Point
7806.00	89.290	180.990	7365.39	404.65	-389.24	259.82	40°12'03.678"N	104°48'18.097"W	1.76	
7891.00	90.180	179.720	7365.78	489.45	-474.23	259.29	40°12'02.838"N	104°48'18.103"W	1.82	
7976.00	91.160	179.750	7364.79	574.30	-559.22	259.69	40°12'01.998"N	104°48'18.098"W	1.15	
8061.00	91.130	179.590	7363.09	659.15	-644.21	260.18	40°12'01.158"N	104°48'18.092"W	0.19	
8147.00	90.030	179.550	7362.22	745.01	-730.20	260.82	40°12'00.308"N	104°48'18.084"W	1.28	
8232.00	89.230	178.990	7362.77	829.91	-815.19	261.90	40°11'59.468"N	104°48'18.070"W	1.15	
8317.00	90.580	179.490	7362.91	914.80	-900.18	263.03	40°11'58.628"N	104°48'18.055"W	1.69	
8402.00	89.200	179.190	7363.07	999.69	-985.17	264.01	40°11'57.789"N	104°48'18.043"W	1.66	
8488.00	89.870	178.950	7363.77	1085.59	-1071.16	265.41	40°11'56.939"N	104°48'18.025"W	0.83	
8573.00	89.630	179.020	7364.14	1170.51	-1156.14	266.91	40°11'56.099"N	104°48'18.005"W	0.29	
8658.00	89.130	179.110	7365.06	1255.41	-1241.12	268.30	40°11'55.259"N	104°48'17.987"W	0.60	
8742.00	89.840	178.980	7365.81	1339.32	-1325.11	269.70	40°11'54.429"N	104°48'17.969"W	0.86	
8827.00	89.440	179.290	7366.35	1424.23	-1410.10	270.98	40°11'53.589"N	104°48'17.953"W	0.60	
8910.00	87.780	178.960	7368.36	1507.11	-1493.06	272.25	40°11'52.770"N	104°48'17.937"W	2.04	
8995.00	88.090	178.960	7371.42	1591.97	-1577.99	273.79	40°11'51.930"N	104°48'17.917"W	0.36	
9081.00	88.860	179.440	7373.71	1677.84	-1663.95	274.99	40°11'51.081"N	104°48'17.901"W	1.05	
9166.00	90.150	180.100	7374.45	1762.69	-1748.94	275.33	40°11'50.241"N	104°48'17.897"W	1.70	
9251.00	90.460	180.170	7374.00	1847.51	-1833.94	275.13	40°11'49.401"N	104°48'17.899"W	0.37	
9336.00	90.640	180.160	7373.18	1932.33	-1918.94	274.89	40°11'48.561"N	104°48'17.903"W	0.21	
9421.00	90.980	180.620	7371.98	2017.11	-2003.93	274.31	40°11'47.721"N	104°48'17.910"W	0.67	



Actual Wellpath Report

NORTON 35C-29HZ AWP

Page 5 of 7



REFERENCE WELLPATH IDENTIFICATION

Operator	KERR-MCGEE OIL & GAS ONSHORE LP	Slot	SLOT#34 NORTON 35C-29HZ (340'FNL & 1307'FWL, SEC.29)
Area	COLORADO	Well	NORTON 35C-29HZ
Field	WELD COUNTY (KERR MCGEE)	Wellbore	NORTON 35C-29HZ AWB
Facility	SEC.29-T3N-R66W		

WELLPATH DATA (165 stations)

MD [ft]	Inclination [°]	Azimuth [°]	TVD [ft]	Vert Sect [ft]	North [ft]	East [ft]	Latitude	Longitude	DLS [°/100ft]	Comments
9507.00	91.450	180.890	7370.15	2102.85	-2089.90	273.18	40°11'46.872"N	104°48'17.925"W	0.63	
9591.00	90.250	180.360	7368.91	2186.61	-2173.88	272.26	40°11'46.042"N	104°48'17.936"W	1.56	
9677.00	89.540	179.920	7369.07	2272.43	-2259.88	272.05	40°11'45.192"N	104°48'17.939"W	0.97	
9762.00	90.090	179.990	7369.34	2357.27	-2344.88	272.12	40°11'44.352"N	104°48'17.938"W	0.65	
9847.00	90.090	179.760	7369.21	2442.12	-2429.88	272.30	40°11'43.512"N	104°48'17.936"W	0.27	
9933.00	89.690	179.620	7369.37	2527.98	-2515.88	272.77	40°11'42.662"N	104°48'17.930"W	0.49	
10017.00	89.660	179.540	7369.85	2611.85	-2599.88	273.38	40°11'41.832"N	104°48'17.922"W	0.10	
10102.00	90.030	179.940	7370.08	2696.71	-2684.88	273.77	40°11'40.992"N	104°48'17.917"W	0.64	
10188.00	89.480	179.300	7370.45	2782.57	-2770.87	274.34	40°11'40.142"N	104°48'17.910"W	0.98	
10273.00	90.060	180.040	7370.79	2867.44	-2855.87	274.83	40°11'39.302"N	104°48'17.903"W	1.11	
10358.00	90.150	179.940	7370.63	2952.27	-2940.87	274.84	40°11'38.462"N	104°48'17.903"W	0.16	
10443.00	90.250	180.490	7370.33	3037.09	-3025.87	274.52	40°11'37.622"N	104°48'17.907"W	0.66	
10528.00	90.120	180.060	7370.06	3121.89	-3110.87	274.12	40°11'36.782"N	104°48'17.913"W	0.53	
10614.00	90.120	179.860	7369.88	3207.73	-3196.87	274.18	40°11'35.933"N	104°48'17.912"W	0.23	
10699.00	89.690	179.380	7370.02	3292.60	-3281.86	274.74	40°11'35.093"N	104°48'17.905"W	0.76	
10784.00	90.400	180.260	7369.95	3377.45	-3366.86	275.01	40°11'34.253"N	104°48'17.901"W	1.33	
10869.00	90.580	181.490	7369.23	3462.19	-3451.85	273.71	40°11'33.413"N	104°48'17.918"W	1.46	
10954.00	90.180	181.170	7368.66	3546.88	-3536.82	271.74	40°11'32.573"N	104°48'17.943"W	0.60	
11039.00	89.320	180.700	7369.03	3631.61	-3621.81	270.35	40°11'31.733"N	104°48'17.961"W	1.15	
11124.00	90.580	180.440	7369.11	3716.39	-3706.80	269.50	40°11'30.893"N	104°48'17.972"W	1.51	
11209.00	88.490	178.820	7369.80	3801.25	-3791.79	270.05	40°11'30.054"N	104°48'17.965"W	3.11	
11294.00	89.690	179.490	7371.15	3886.14	-3876.77	271.31	40°11'29.214"N	104°48'17.949"W	1.62	
11380.00	89.720	179.260	7371.59	3972.02	-3962.76	272.24	40°11'28.364"N	104°48'17.937"W	0.27	
11464.00	88.420	179.470	7372.95	4055.90	-4046.74	273.17	40°11'27.534"N	104°48'17.925"W	1.57	
11549.00	88.330	179.250	7375.37	4140.76	-4131.70	274.12	40°11'26.695"N	104°48'17.913"W	0.28	
11634.00	88.830	179.170	7377.47	4225.63	-4216.67	275.30	40°11'25.855"N	104°48'17.898"W	0.60	
11719.00	89.320	179.190	7378.84	4310.52	-4301.65	276.51	40°11'25.015"N	104°48'17.882"W	0.58	
11804.00	89.810	179.190	7379.49	4395.42	-4386.64	277.71	40°11'24.175"N	104°48'17.867"W	0.58	
11830.00	90.000	179.250	7379.53	4421.39	-4412.64	278.07	40°11'23.918"N	104°48'17.862"W	0.77	Last BHI MWD Survey
11890.00	90.000	179.250	7379.53	4481.32	-4472.63	278.85	40°11'23.326"N	104°48'17.852"W	0.00	Projection to Bit

HOLE & CASING SECTIONS - Ref Wellbore: NORTON 35C-29HZ AWB Ref Wellpath: NORTON 35C-29HZ AWP

String/Diameter	Start MD [ft]	End MD [ft]	Interval [ft]	Start TVD [ft]	End TVD [ft]	Start N/S [ft]	Start E/W [ft]	End N/S [ft]	End E/W [ft]
12.25in Open Hole	17.00	940.00	923.00	17.00	939.97	0.00	0.00	1.33	-3.66
9.875in Casing Surface	17.00	940.00	923.00	17.00	939.97	0.00	0.00	1.33	-3.66
8.75in Open Hole	940.00	7772.00	6832.00	939.97	7364.81	1.33	-3.66	-355.25	260.49
7in Casing Intermediate	17.00	7764.00	7747.00	17.00	7364.63	0.00	0.00	-347.25	260.68
6.125in Open Hole	7764.00	11890.00	4126.00	7364.63	7379.53	-347.25	260.68	-4472.63	278.85



Actual Wellpath Report

NORTON 35C-29HZ AWP

Page 6 of 7



REFERENCE WELLPATH IDENTIFICATION

Operator	KERR-MCGEE OIL & GAS ONSHORE LP	Slot	SLOT#34 NORTON 35C-29HZ (340'FNL & 1307'FWL, SEC.29)
Area	COLORADO	Well	NORTON 35C-29HZ
Field	WELD COUNTY (KERR MCGEE)	Wellbore	NORTON 35C-29HZ AWB
Facility	SEC.29-T3N-R66W		

TARGETS

Name	MD [ft]	TVD [ft]	North [ft]	East [ft]	Grid East [US ft]	Grid North [US ft]	Latitude	Longitude	Shape
RAYMOND PAD SECTION LINES		-28.00	116.02	2776.82	3196636.19	1317360.22	40°12'08.669"N	104°47'45.658"W	polygon
NORTON 35C-29HZ BHL ON PLAT (460'FSL & 1570'FWL, SEC.29) REV-1		7384.00	-4498.69	263.71	3194159.39	1312726.19	40°11'23.068"N	104°48'18.047"W	point
RAYMOND PAD HARDLINES (460' SETBACKS)		7472.00	116.02	2776.82	3196636.19	1317360.22	40°12'08.669"N	104°47'45.658"W	polygon

WELLPATH COMPOSITION - Ref Wellbore: NORTON 35C-29HZ AWB Ref Wellpath: NORTON 35C-29HZ AWP

Start MD [ft]	End MD [ft]	Positional Uncertainty Model	Log Name/Comment	Wellbore
17.00	892.00	Generic gyro - continuous (Standard)	GYRODATA SURVEYS <117-892>	NORTON 35C-29HZ AWB
892.00	7726.00	NaviTrak (Standard)	BHI MWD SURVEYS 8 3/4" HOLE <1030-7726>	NORTON 35C-29HZ AWB
7726.00	11830.00	OnTrak (Standard)	BHI MWD SURVEYS 6 1/8" HOLE <7762-11830>	NORTON 35C-29HZ AWB
11830.00	11890.00	Blind Drilling (std)	Projection to bit	NORTON 35C-29HZ AWB



Actual Wellpath Report

NORTON 35C-29HZ AWP

Page 7 of 7



REFERENCE WELLPATH IDENTIFICATION

Operator	KERR-MCGEE OIL & GAS ONSHORE LP	Slot	SLOT#34 NORTON 35C-29HZ (340'FNL & 1307'FWL, SEC.29)
Area	COLORADO	Well	NORTON 35C-29HZ
Field	WELD COUNTY (KERR MCGEE)	Wellbore	NORTON 35C-29HZ AWP
Facility	SEC.29-T3N-R66W		

WELLPATH COMMENTS

MD [ft]	Inclination [°]	Azimuth [°]	TVD [ft]	Comment
17.00	0.000	49.390	17.00	Tie-On
117.00	0.160	49.390	117.00	Begin GYRO Surveys
892.00	0.800	315.760	891.98	Tie-Into GYRO Surveys
1030.00	2.080	302.190	1029.93	Begin BHI MWD Surveys
7764.00	88.641	181.343	7364.63	7" Casing Point
11830.00	90.000	179.250	7379.53	Last BHI MWD Survey
11890.00	90.000	179.250	7379.53	Projection to Bit