

Company Newfield Production  
Well Banta Ridge Fed 4A-18-1-103  
Field Banta Ridge  
County Rio Blanco  
State CO

Company Foundation Energy LLC.  
Well Banta Ridge Fed 4A-18-1-103  
Field Banta Ridge  
County Rio Blanco State CO

Location: API #: 05-103-11890

Other Services

SHL: 1261' FSL & 633' FWL  
BHL: 607' FSL & 650' FWL  
SEC 18 TWP 1S RGE 103W

Elevation

Permanent Datum Ground Level Elevation 6054'  
Log Measured From Kelly Bushing 10' Above G.L.  
Drilling Measured From Kelly Bushing

K.B. 6064'  
D.F. 6064'  
G.L. 6054'

Date 10-3-12

Run Number	One		
Depth Driller	4689'		
Depth Logger	4615'		
Bottom Logged Interval	4611'		
Top Log Interval	Surface		
Open Hole Size	7 7/8"		
Type Fluid	Water		
Density / Viscosity	///		
Max. Recorded Temp.	104 Deg F. OH		
Estimated Cement Top	60'		
Time Well Ready	Crane		
Time Logger on Bottom	11:15 A.M.		
Equipment Number	407		
location	Roosevelt		
Recorded By	Reynolds		
Witnessed By	Mr. Tanner Bishop		

Borehole Record		Tubing Record				
Bit	From	To	Size	Weight	From	To

Casing Record	Size	Wgt/Ft	Top	Bottom
Surface String	8 5/8"	24#	0	516'
Prot. String				
Production String	4 1/2"	11.6#	0	N/A
Liner				

<<< Fold Here >>>

All interpretations are opinions based on inferences from electrical or other measurements and we cannot and do not guarantee the accuracy or correctness of any interpretation, and we shall not, except in the case of gross or willful negligence on our part, be liable or responsible for any loss, costs, damages, or expenses incurred or sustained by anyone resulting from any interpretation made by any of our officers, agents or employees. These interpretations are also subject to our general terms and conditions set out in our current Price Schedule.

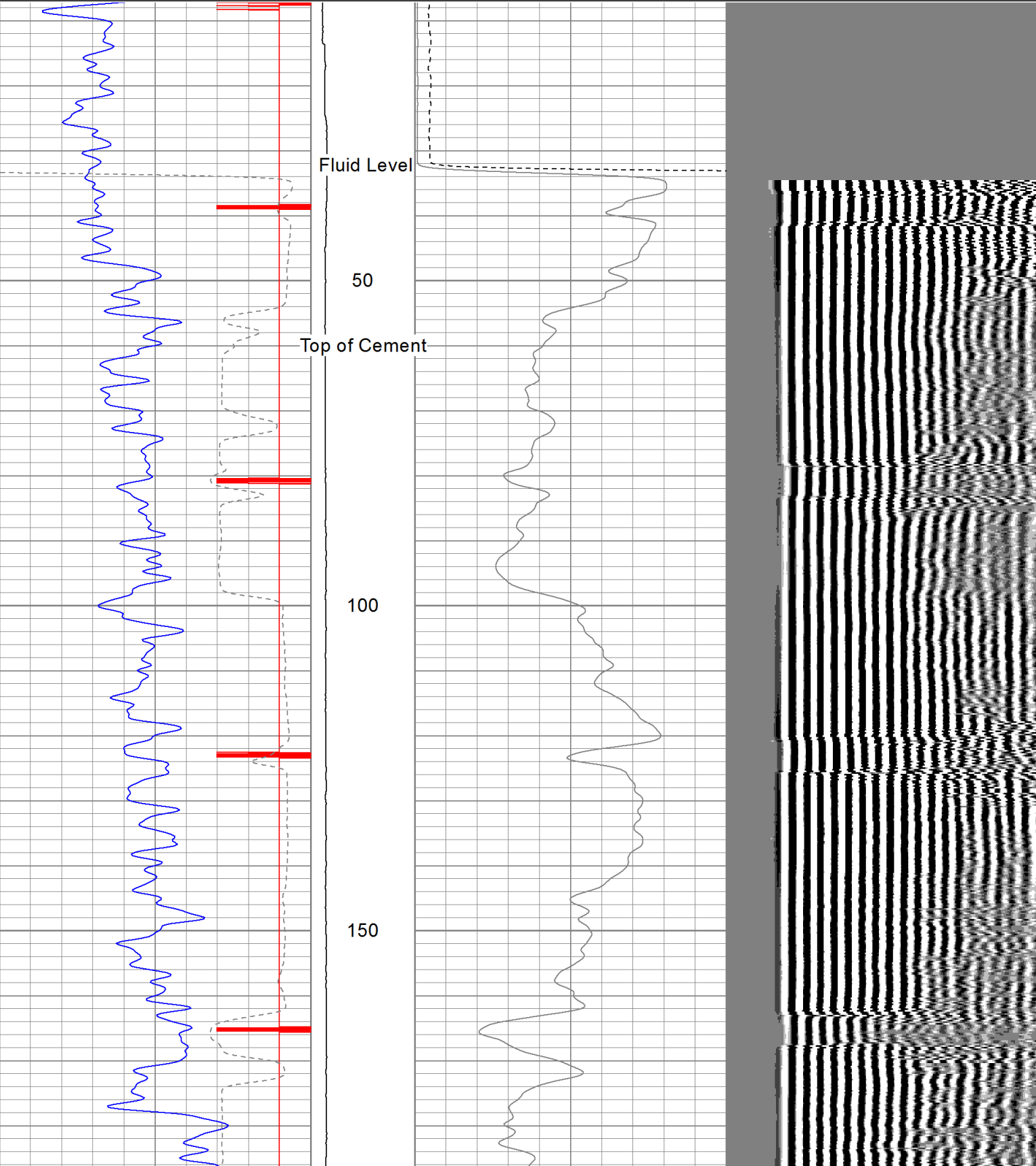
### Comments

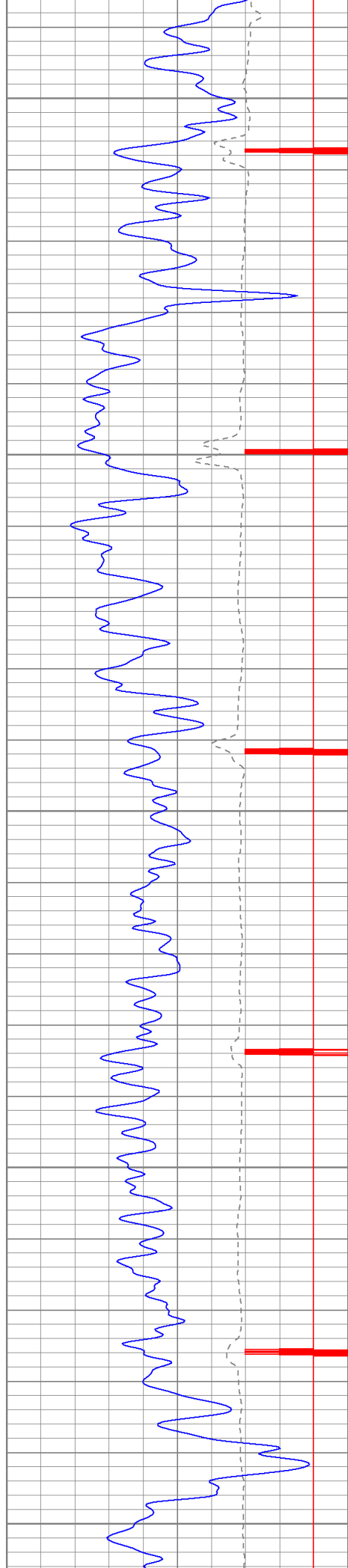
Log Correlated to Halliburton Dual Spaced Neutron, Spectral Density,  
Array Compensated, True Resistivity Log  
Dated: 9-10-12

Thank You for using  
The Perforators.

Database File: br fed 4a-18-1-103.db  
Dataset Pathname: pass4.2  
Presentation Format: cbl  
Dataset Creation: Wed Oct 03 13:04:47 2012 by Calc Std Casedhole 10081  
Charted by: Depth in Feet scaled 1:240

9	CCL	-1	LTEN	0	AMP3 (mV)	100	200	Variable Density	1200
0	GR (GAPI)	150	(lb)	0	Amplified Amplitude (mV)	20			
430	TT3 (usec)	230	0	2500					





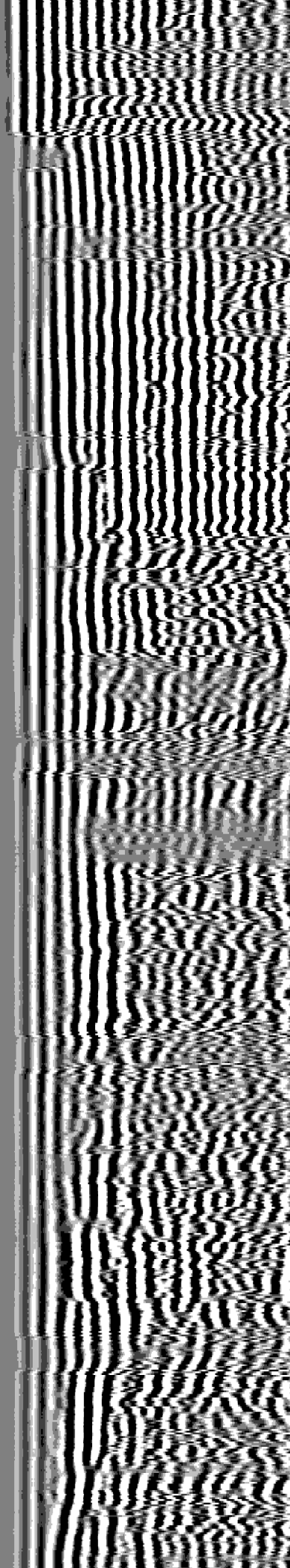
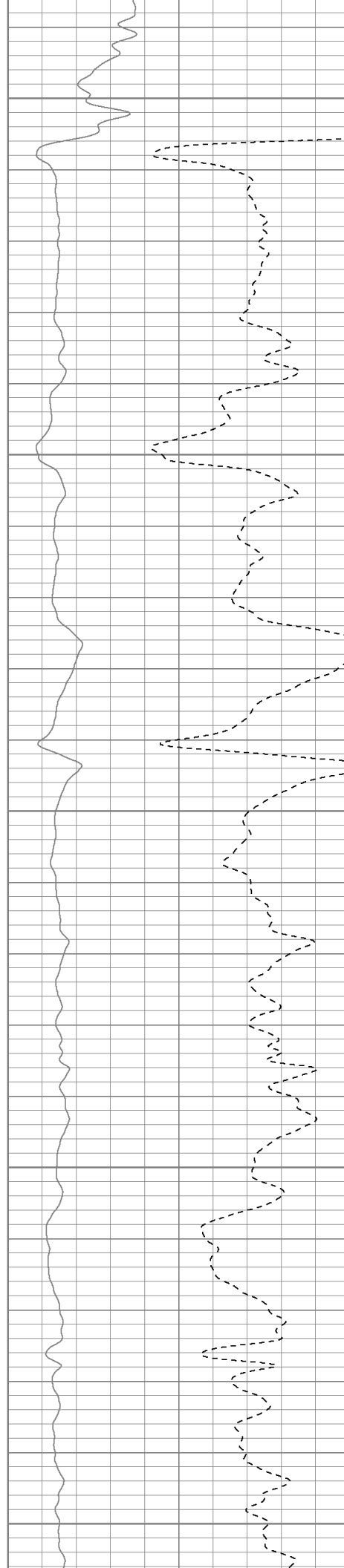
200

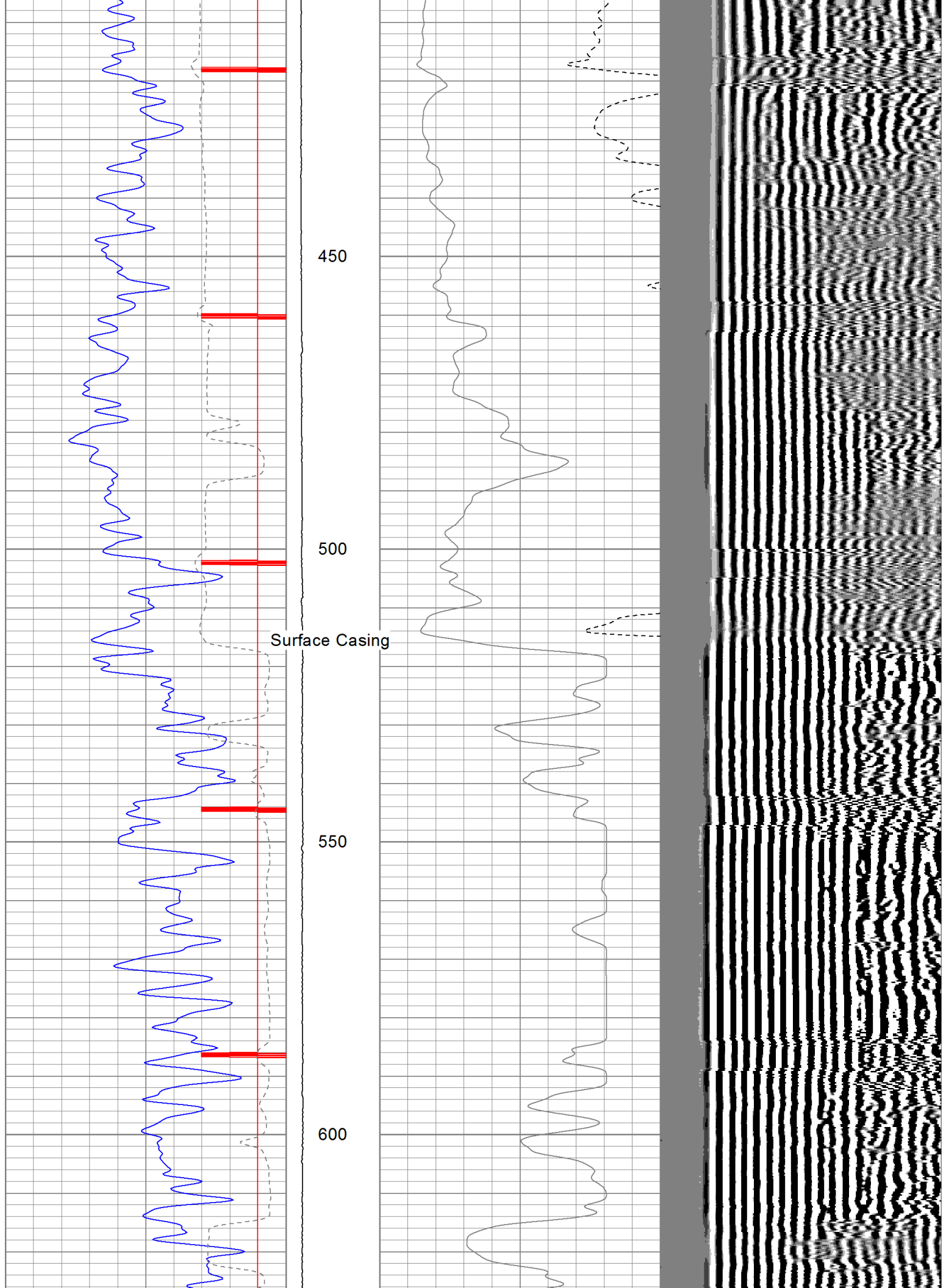
250

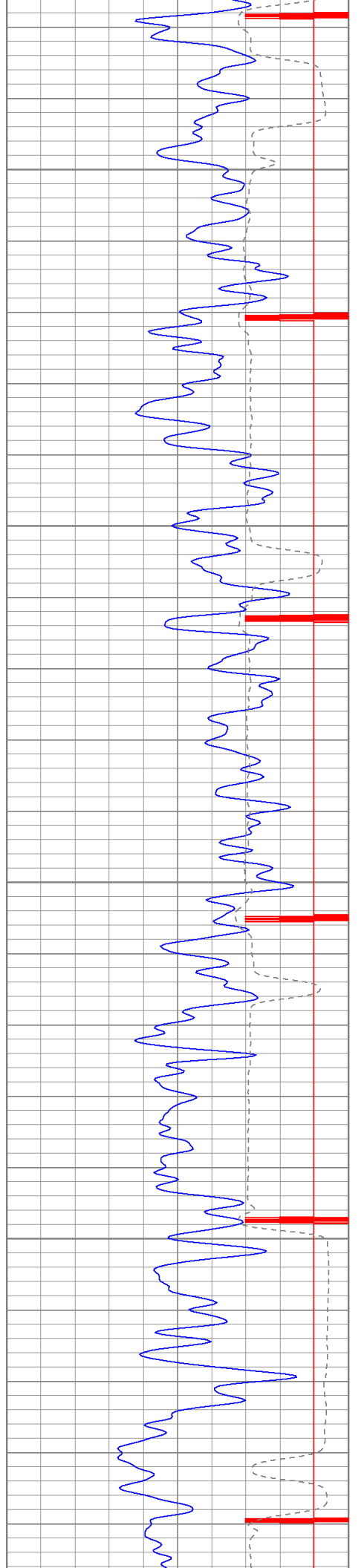
300

350

400





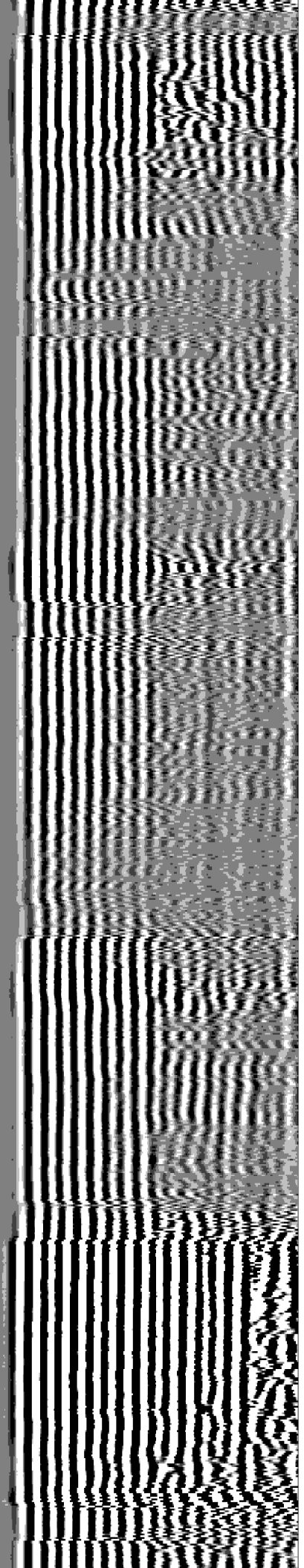
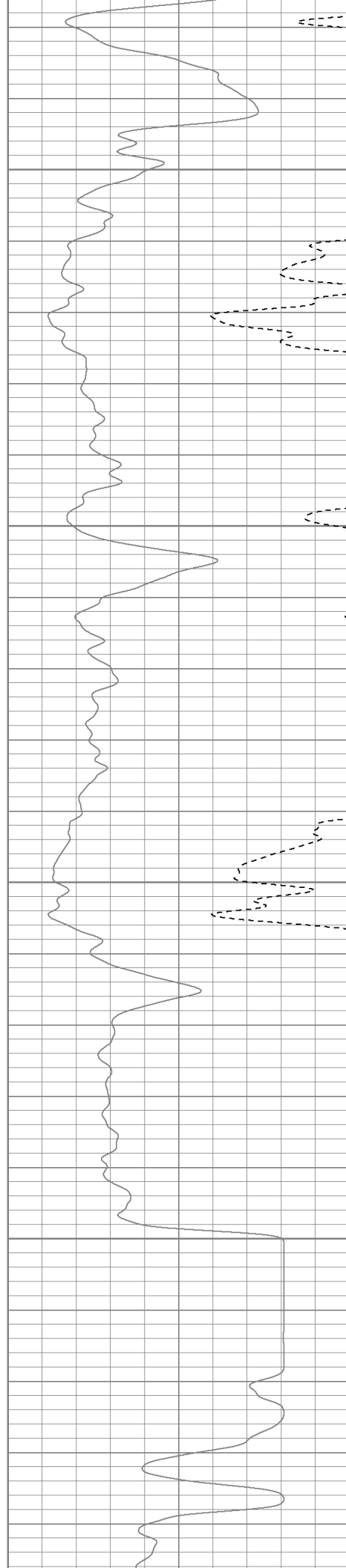


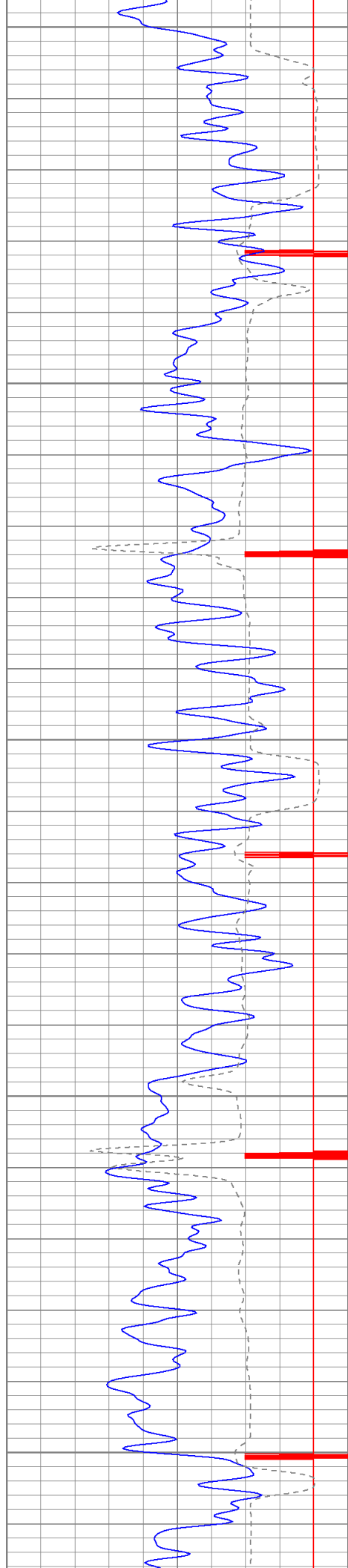
650

700

750

800





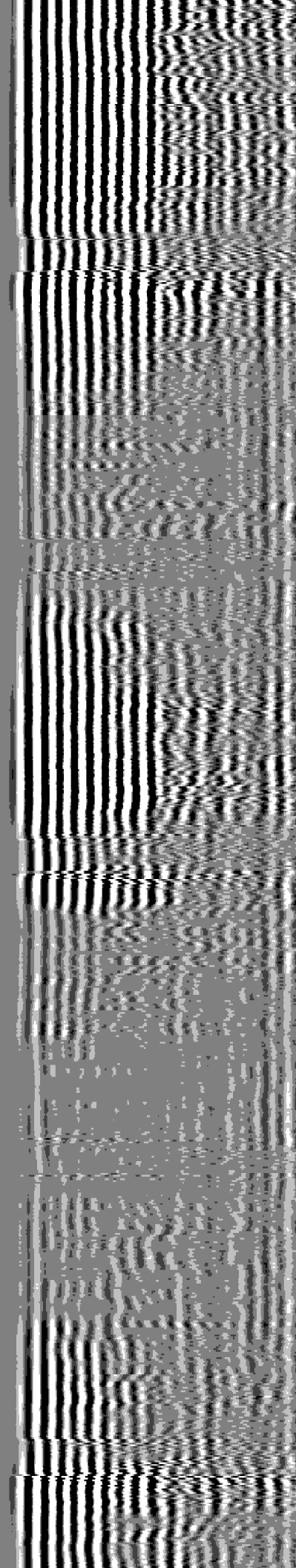
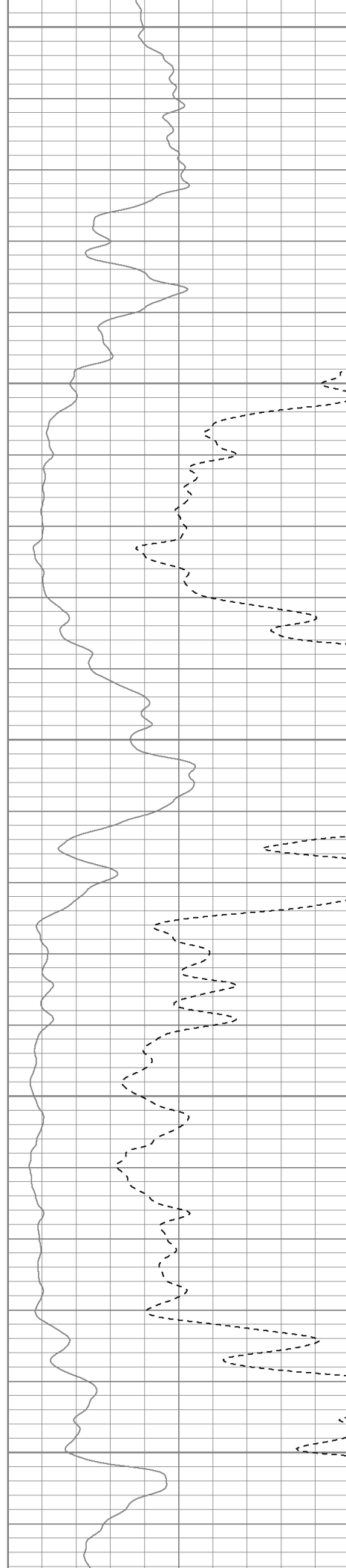
850

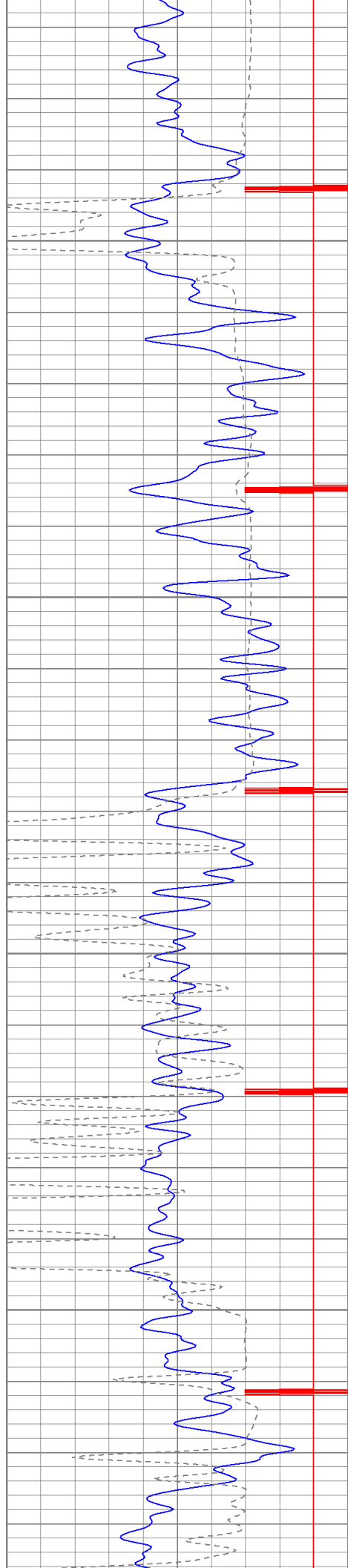
900

950

1000

1050



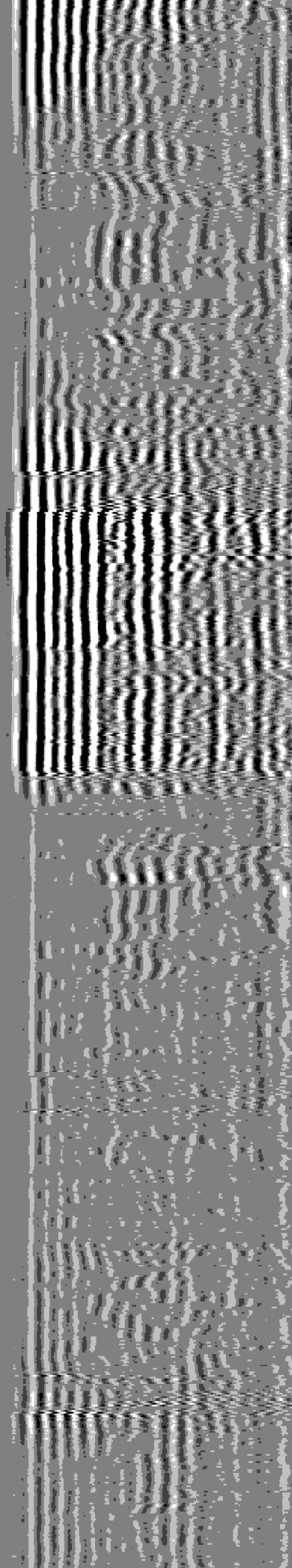
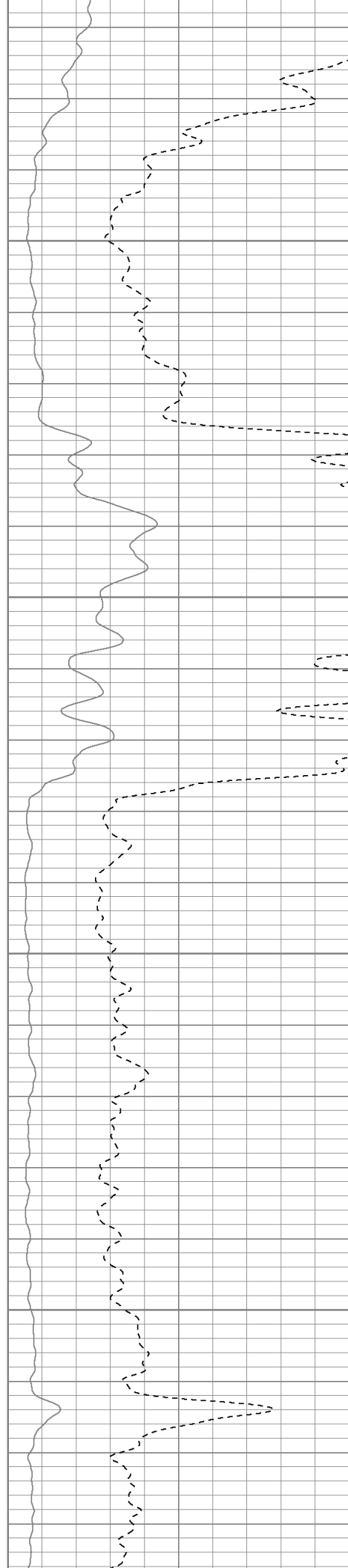


1100

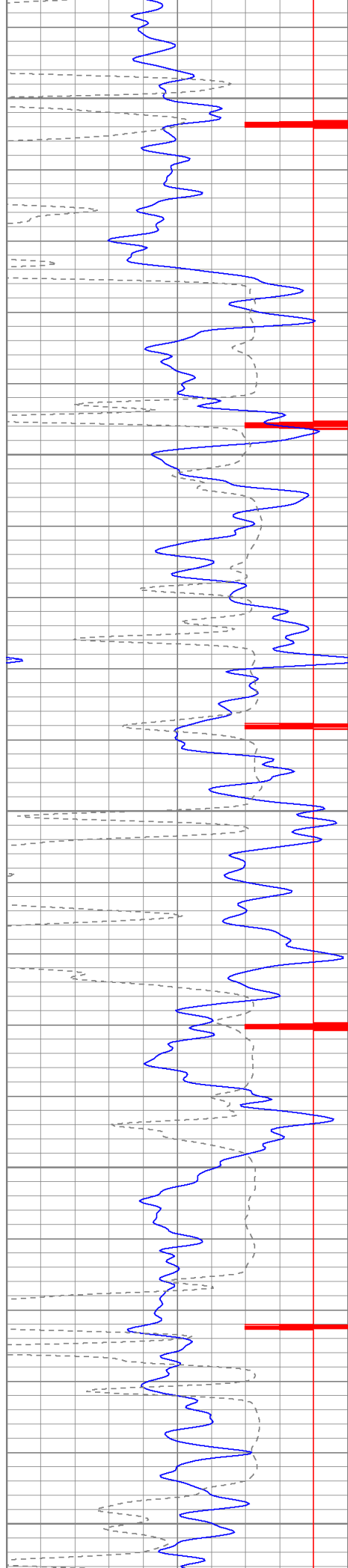
1150

1200

1250







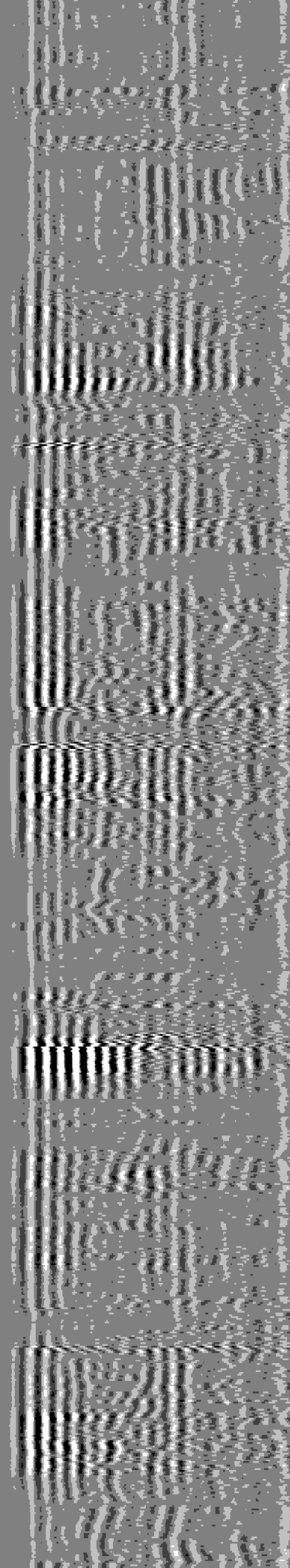
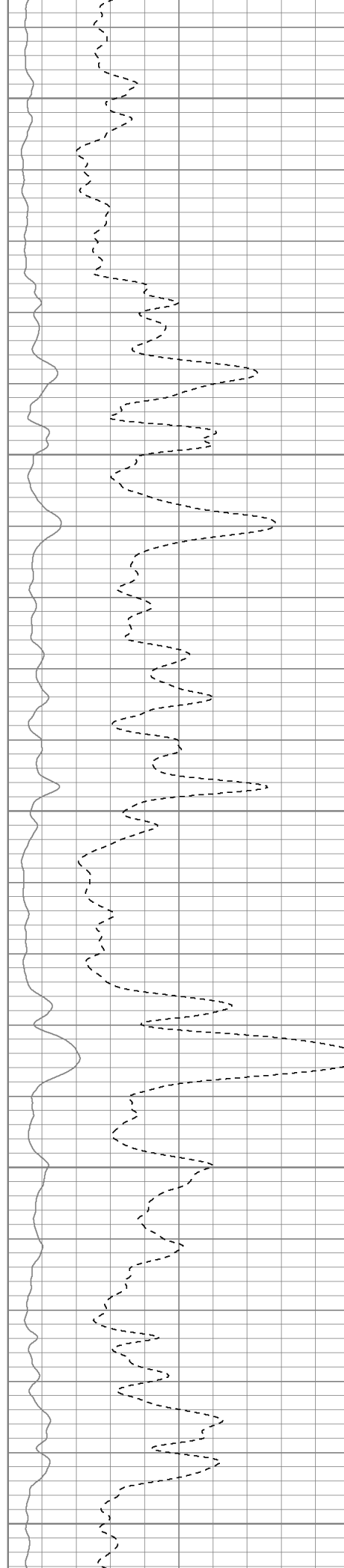
1300

1350

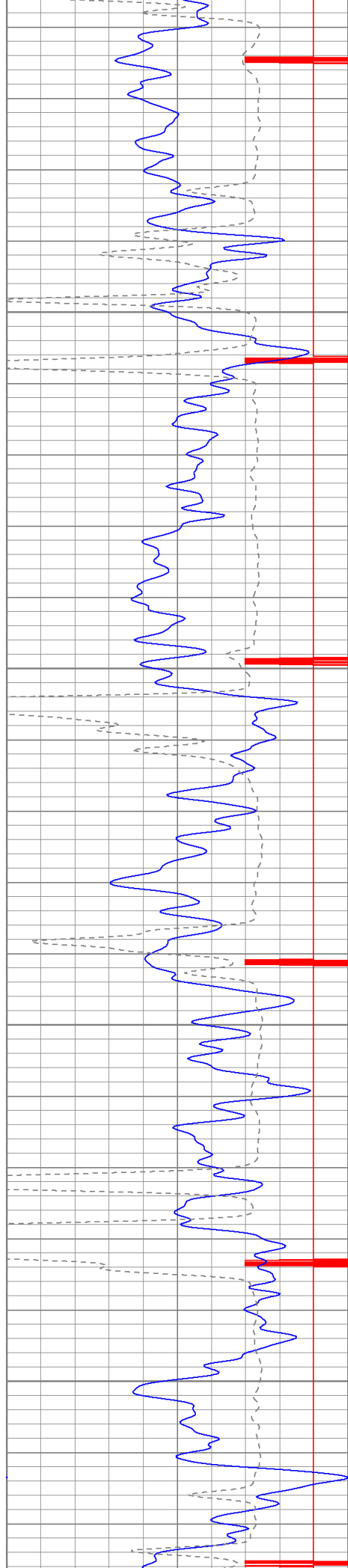
1400

1450

1500





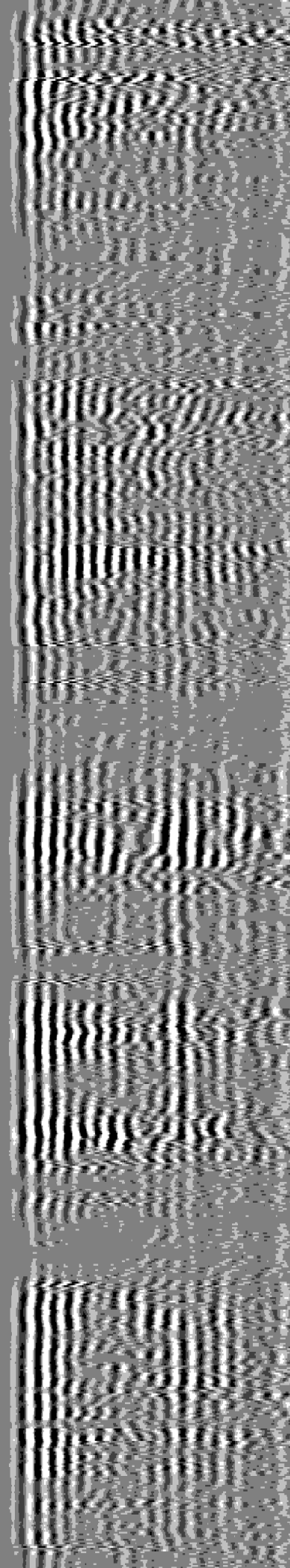
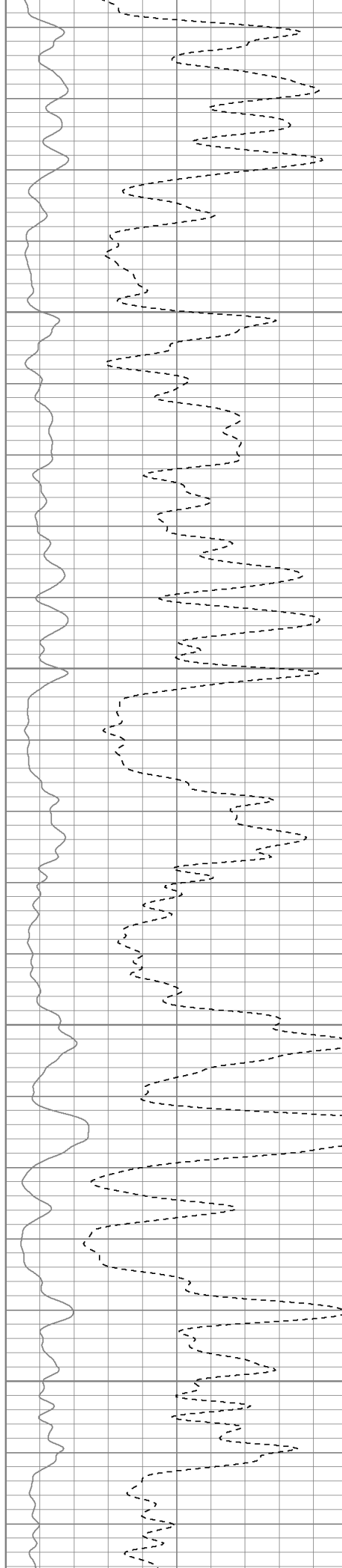


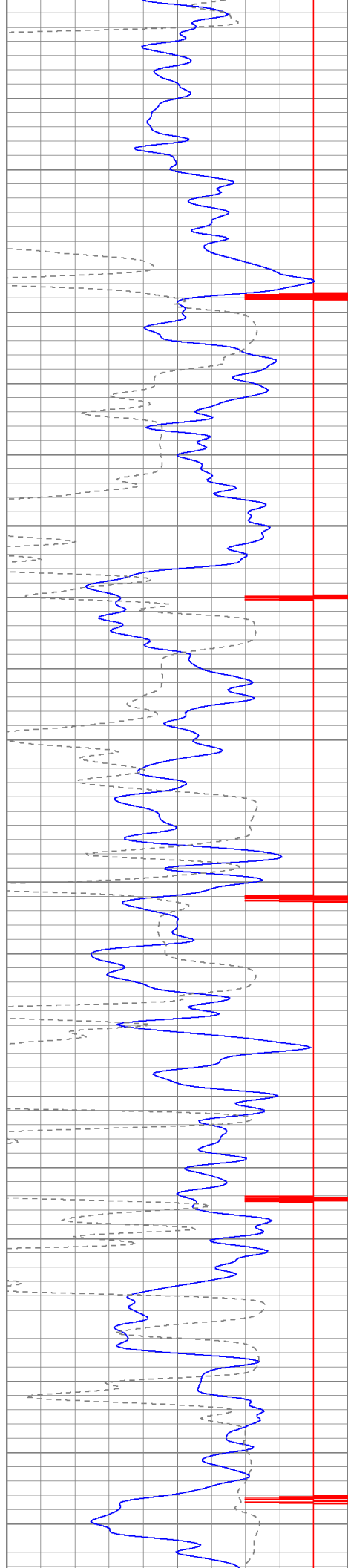
1550

1600

1650

1700



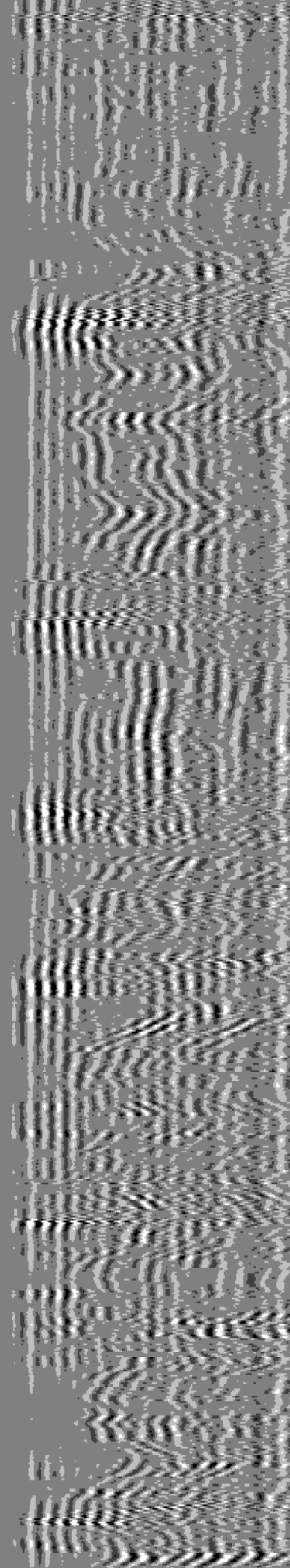
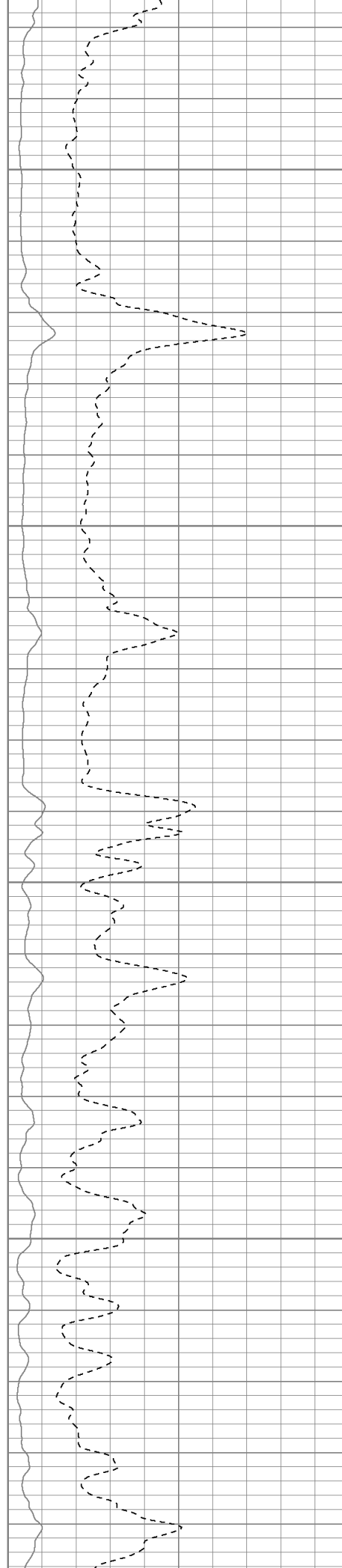


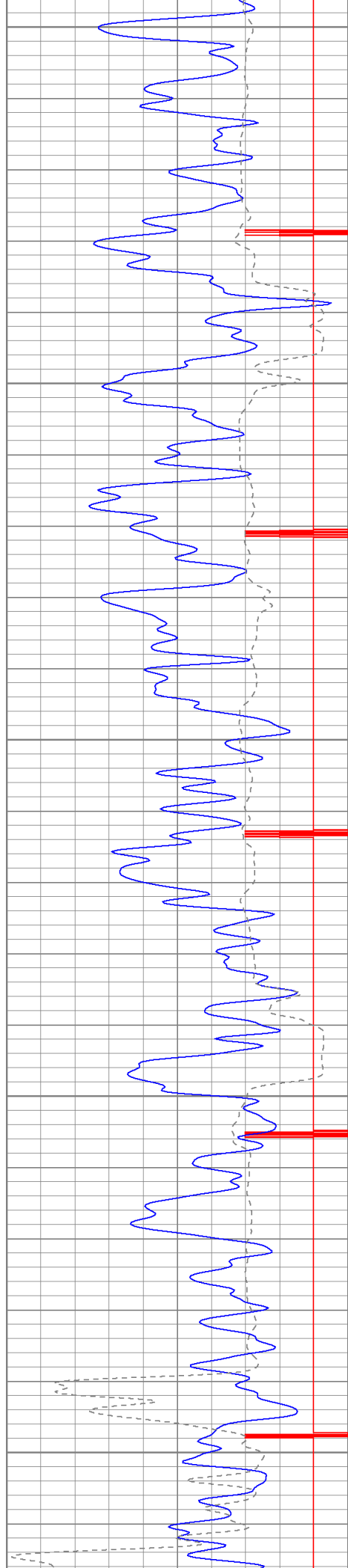
1750

1800

1850

1900





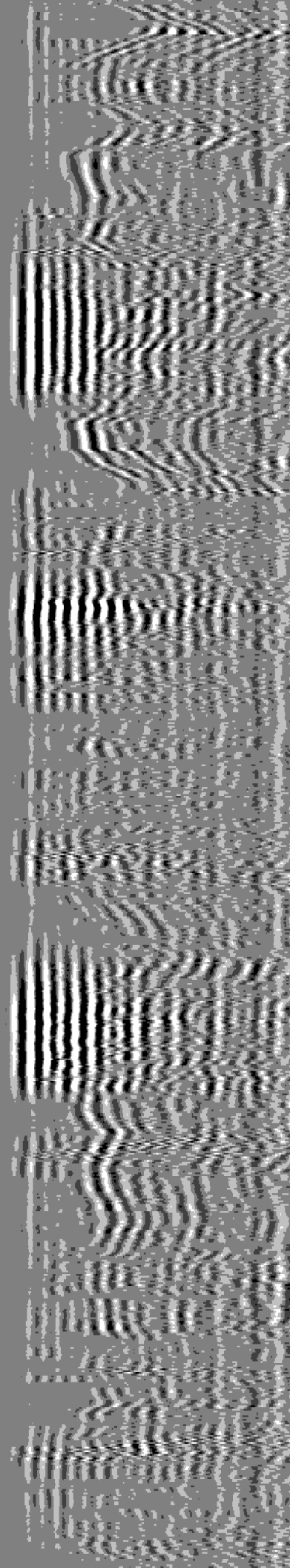
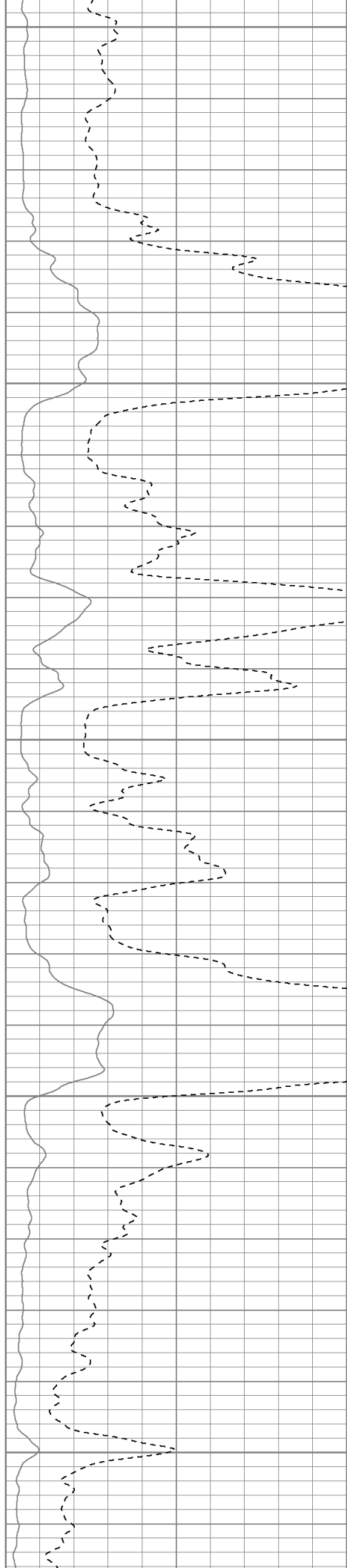
1950

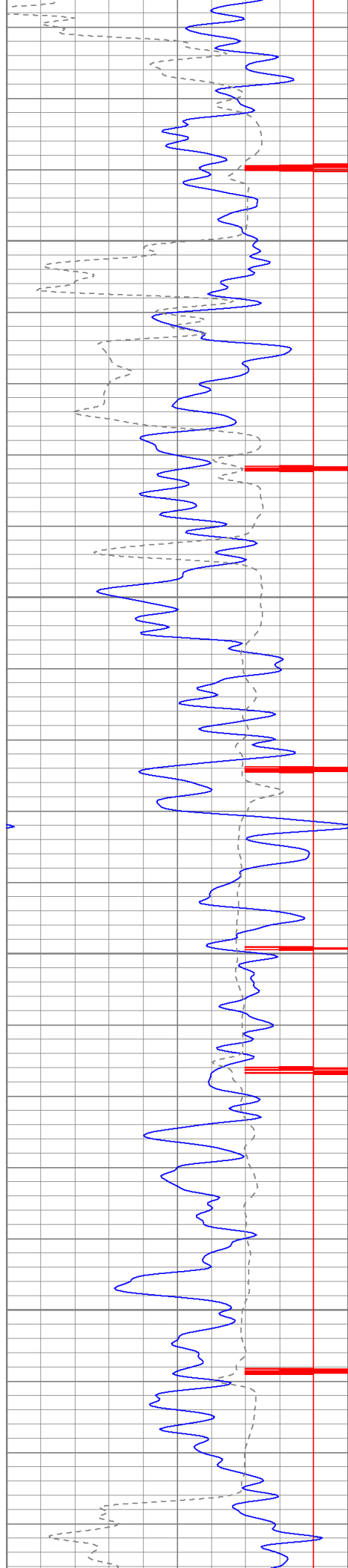
2000

2050

2100

2150



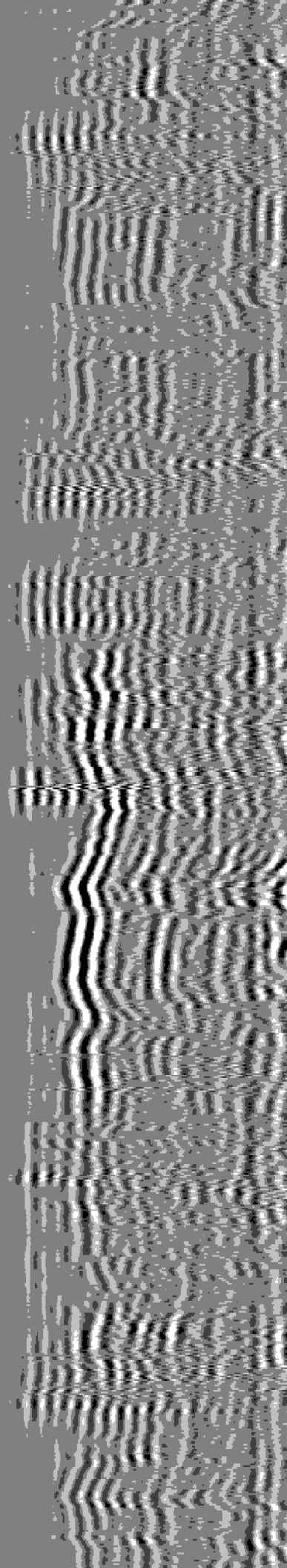
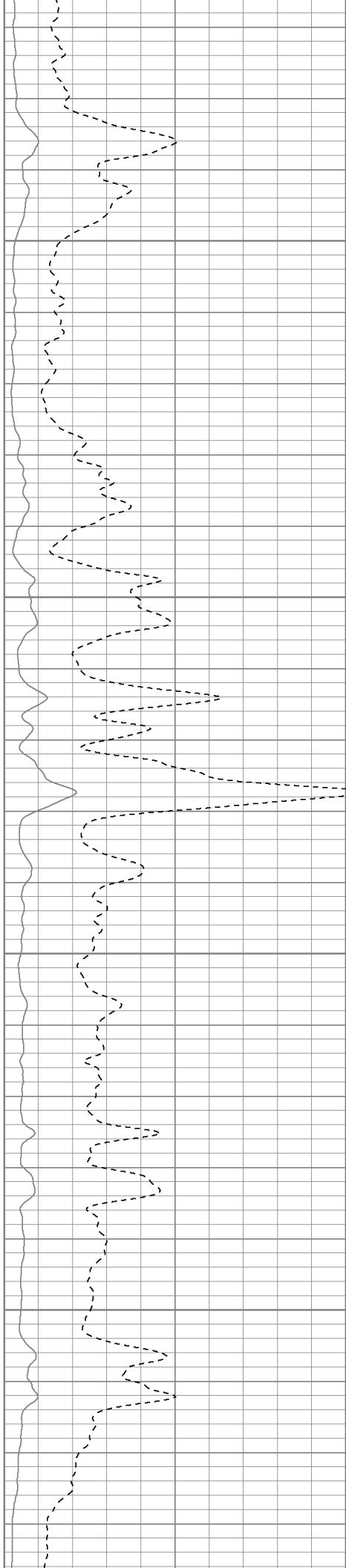


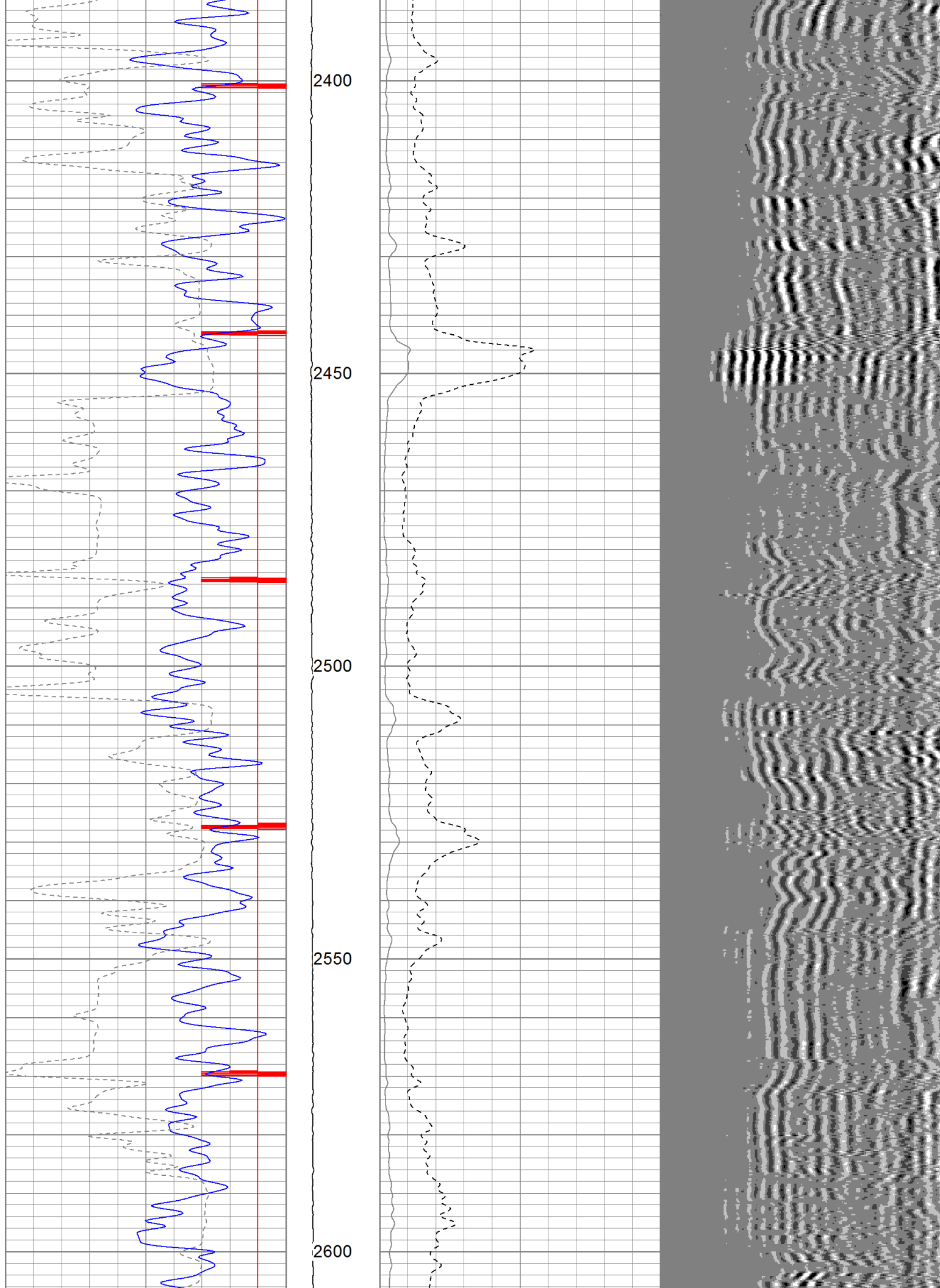
2200

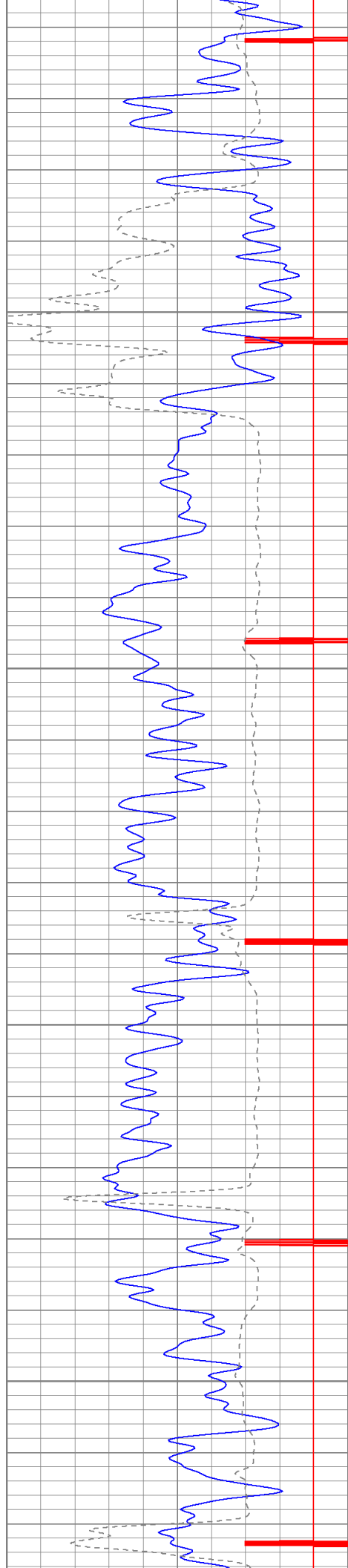
2250

2300

2350





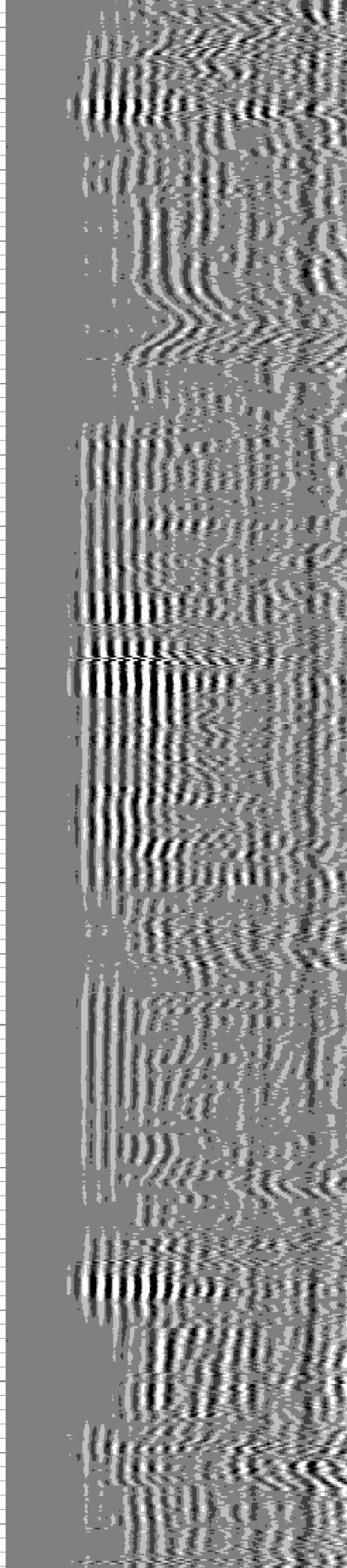
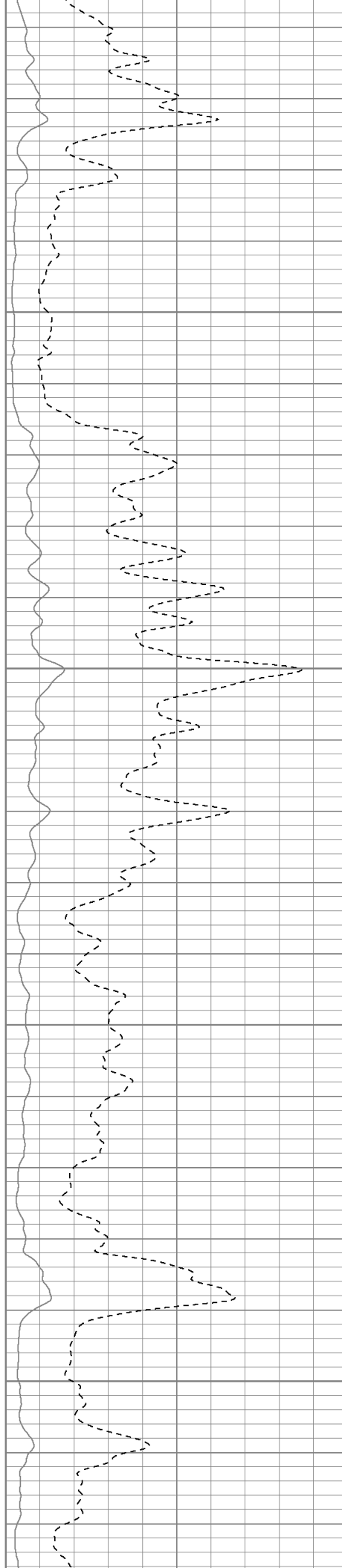


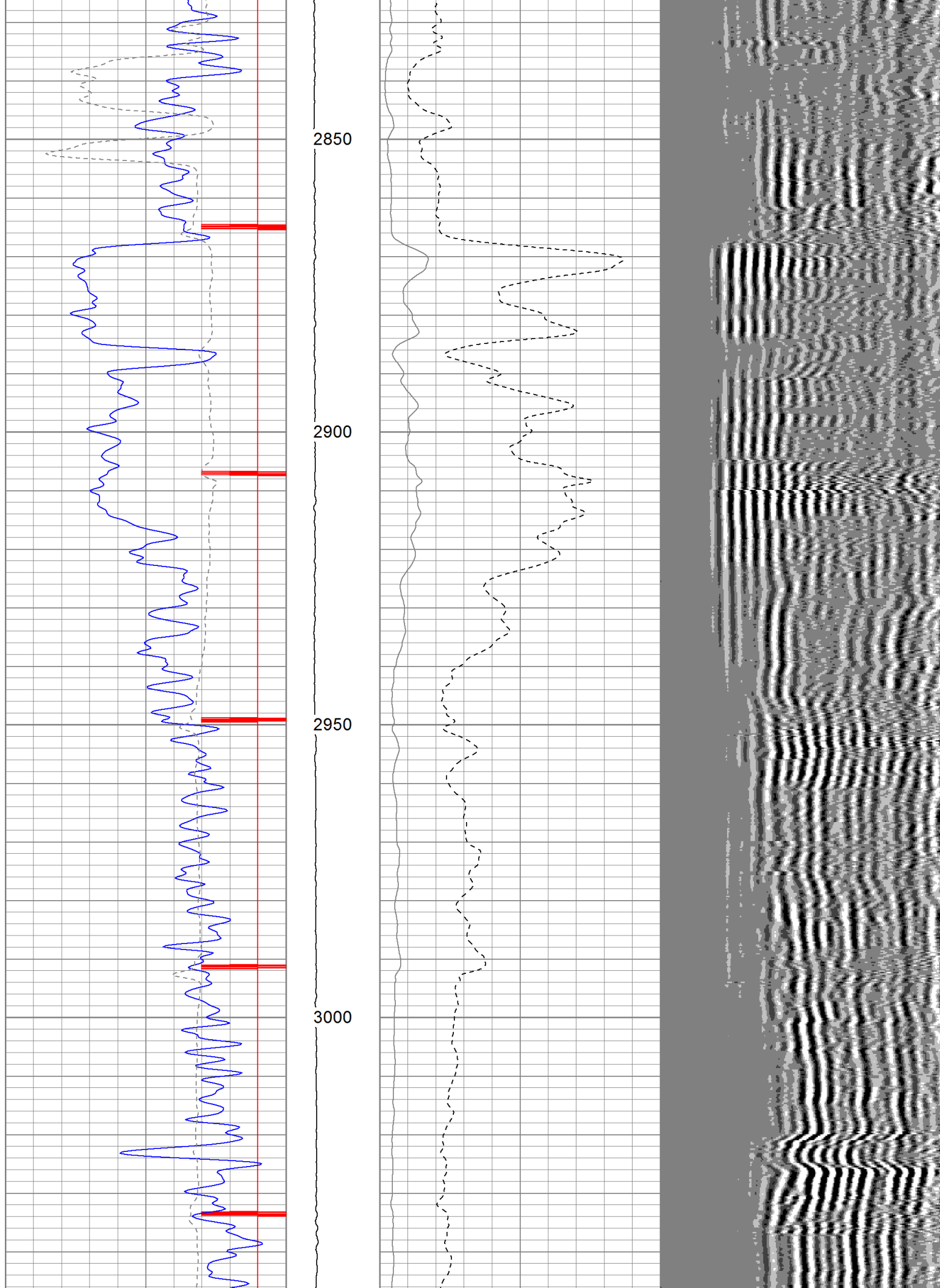
2650

2700

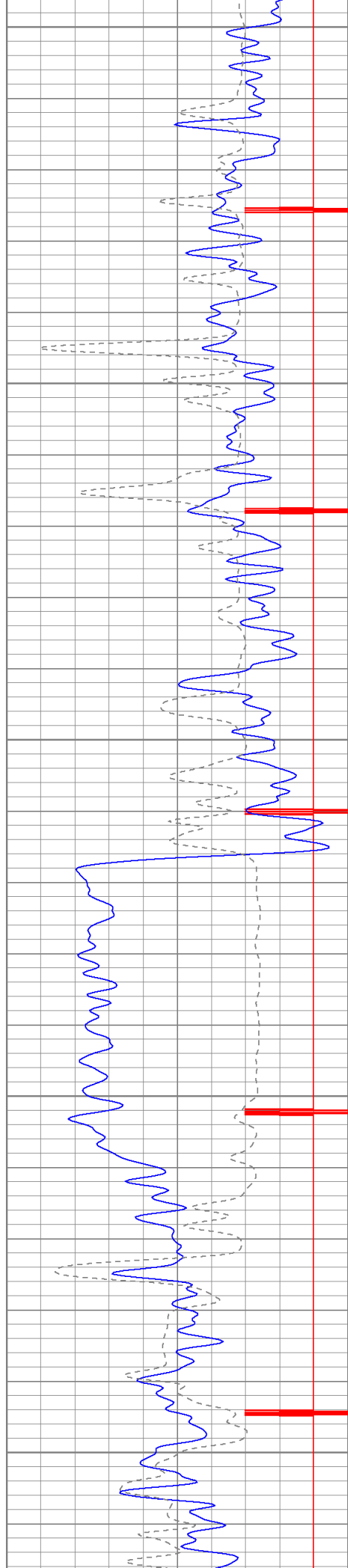
2750

2800









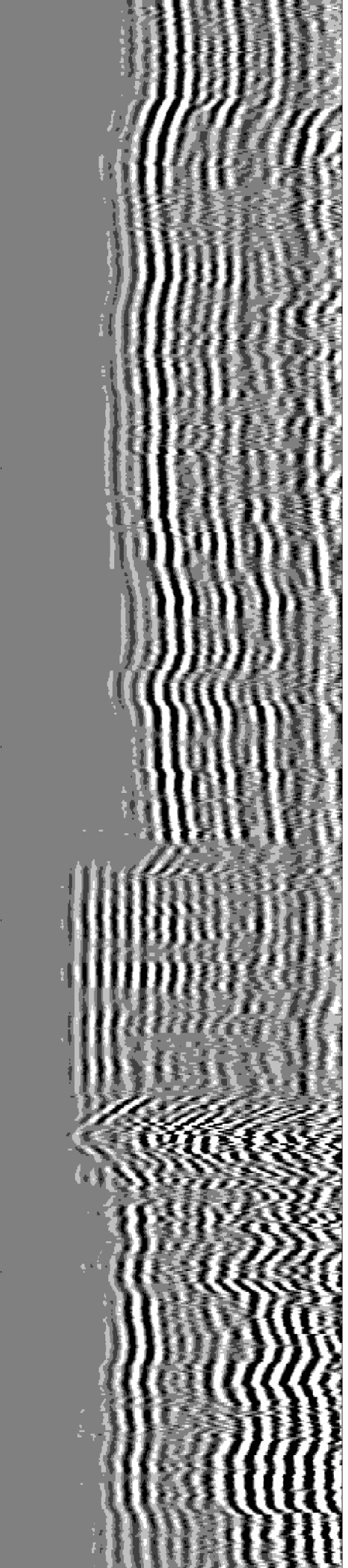
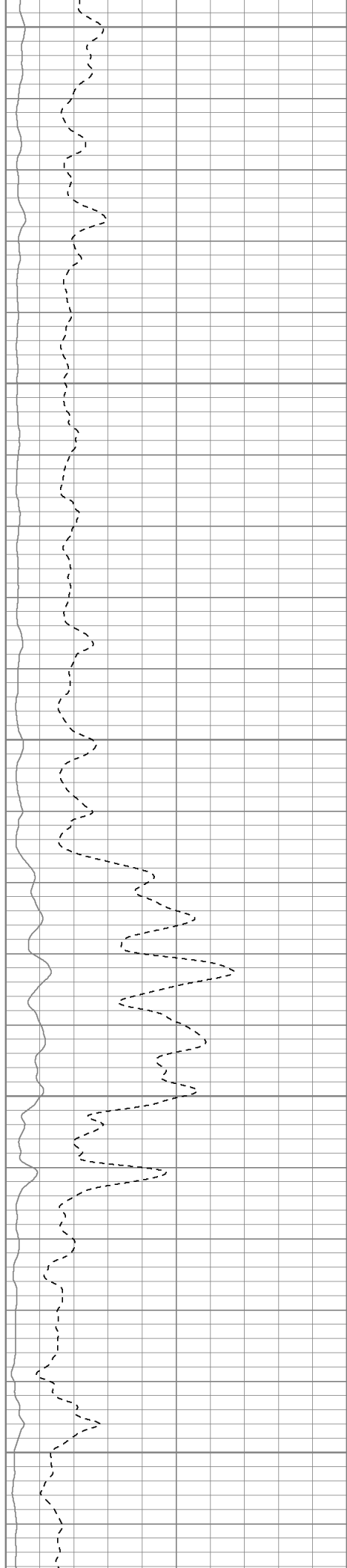
3050

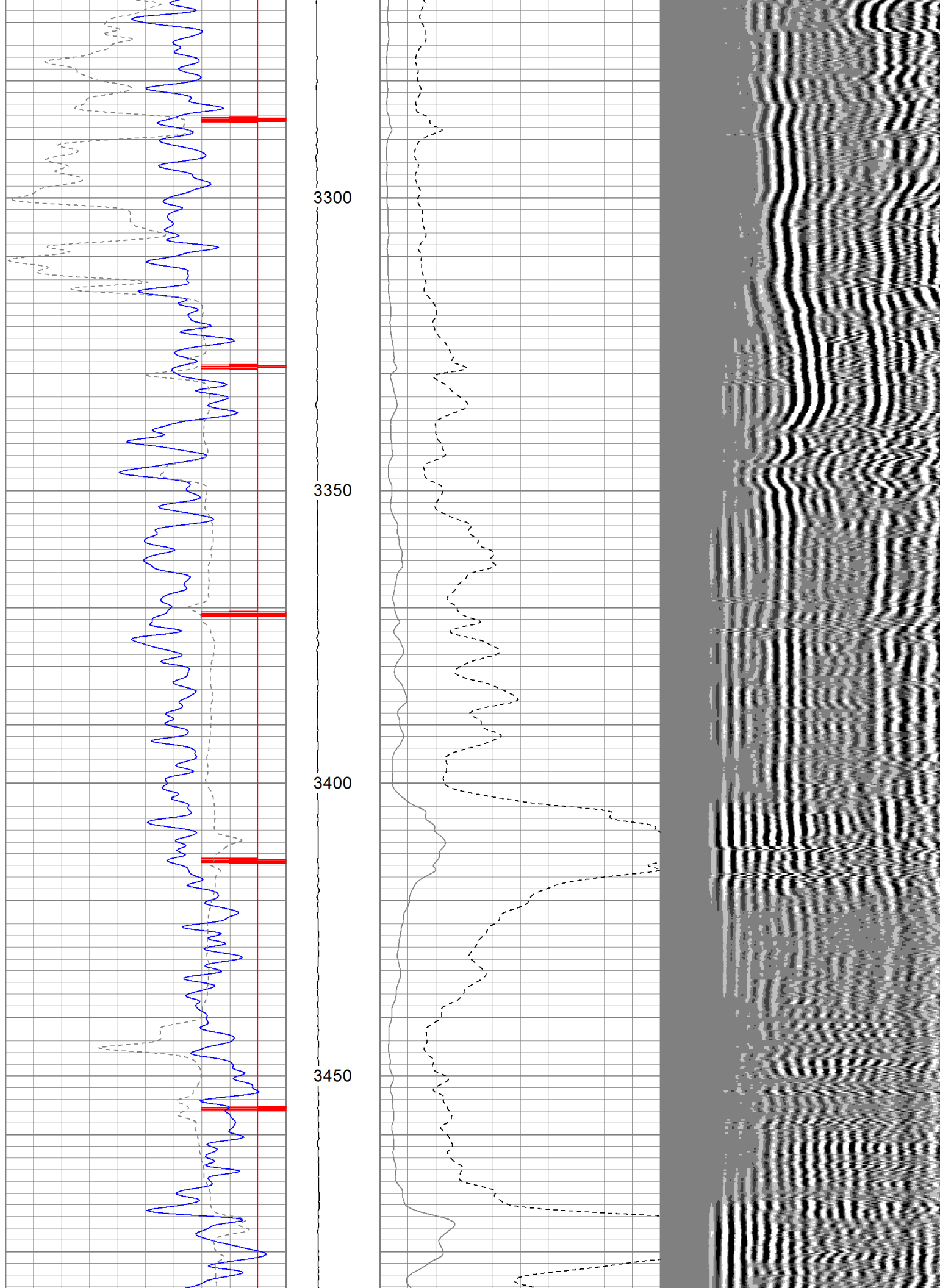
3100

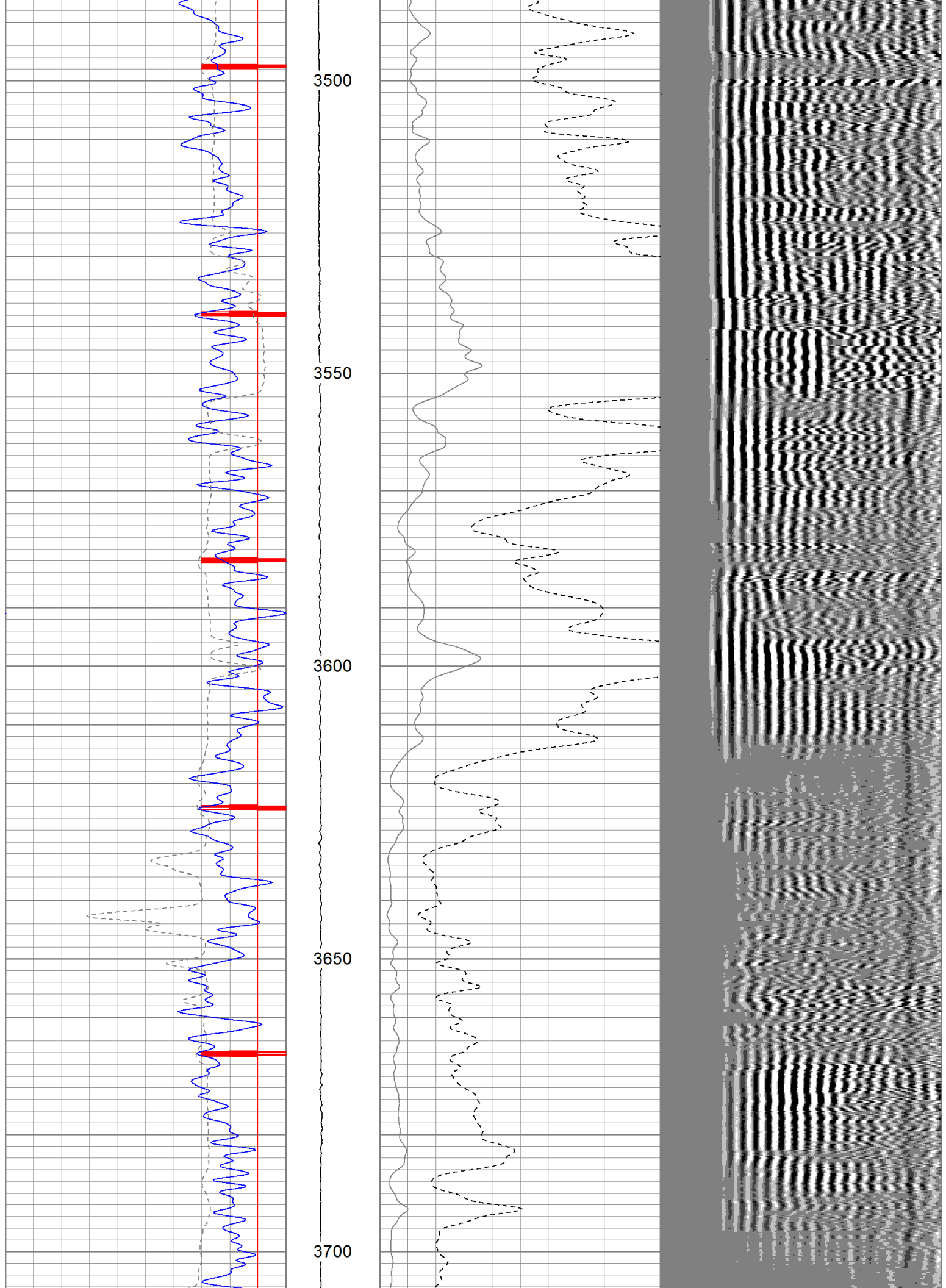
3150

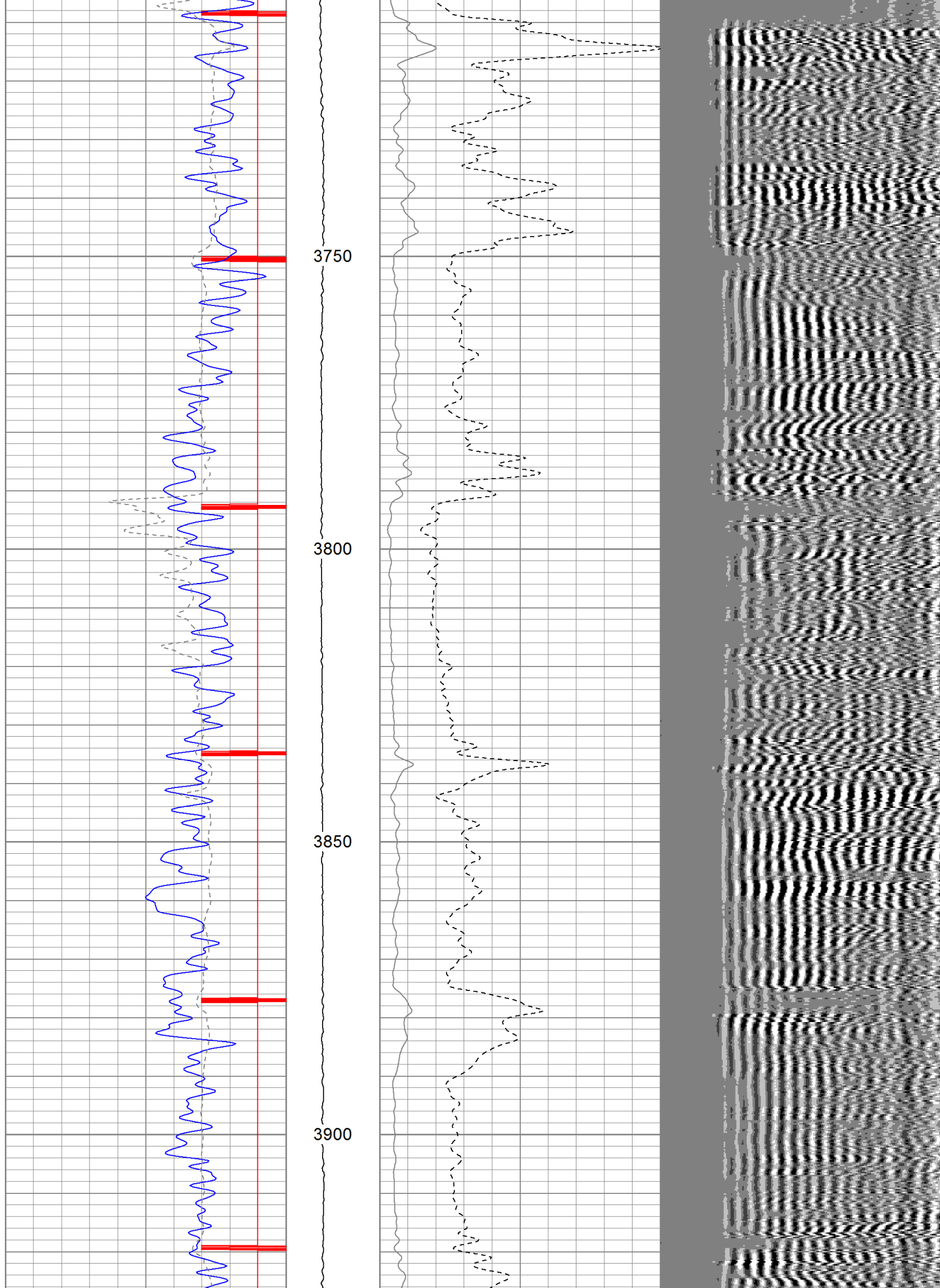
3200

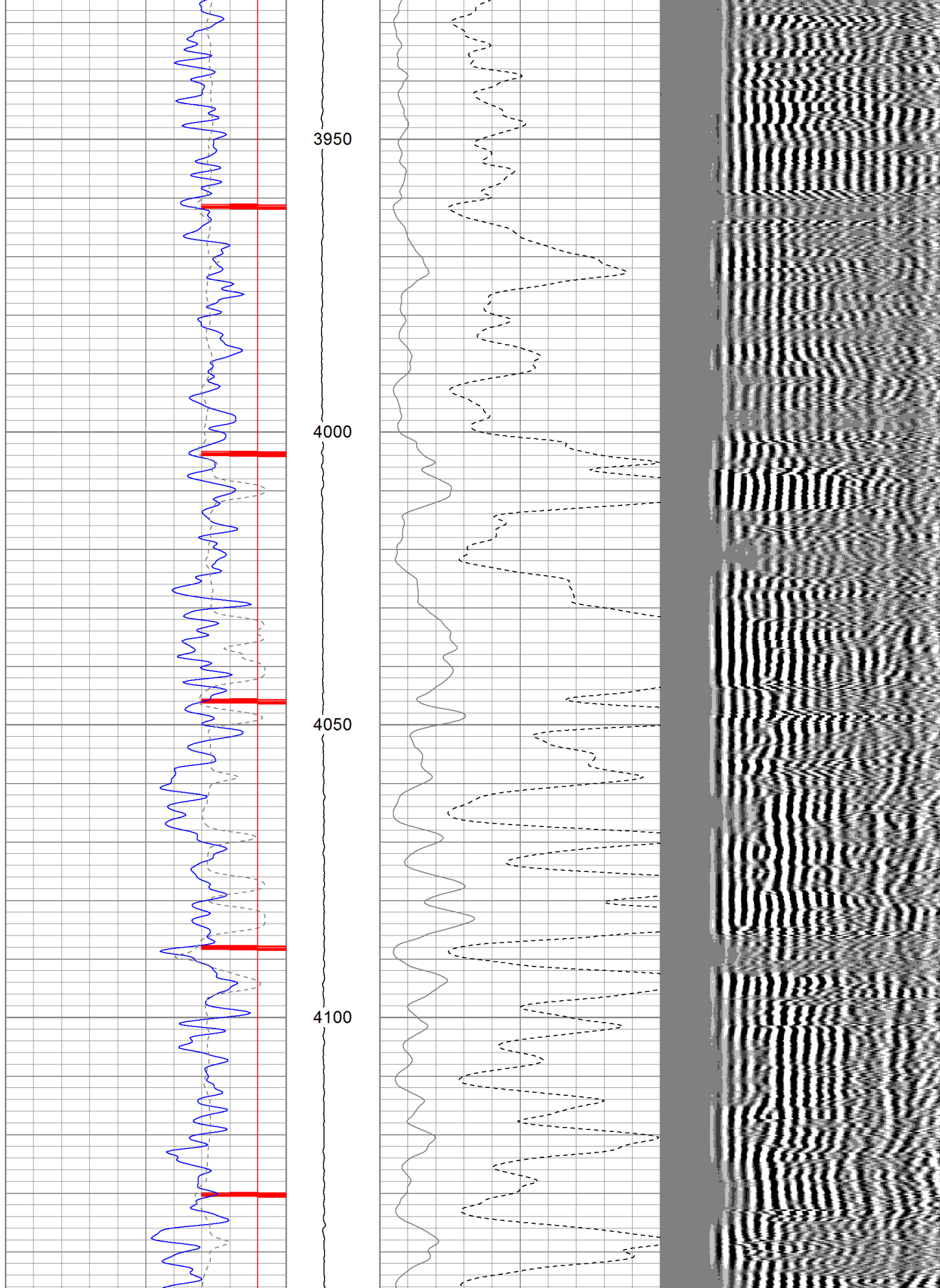
3250

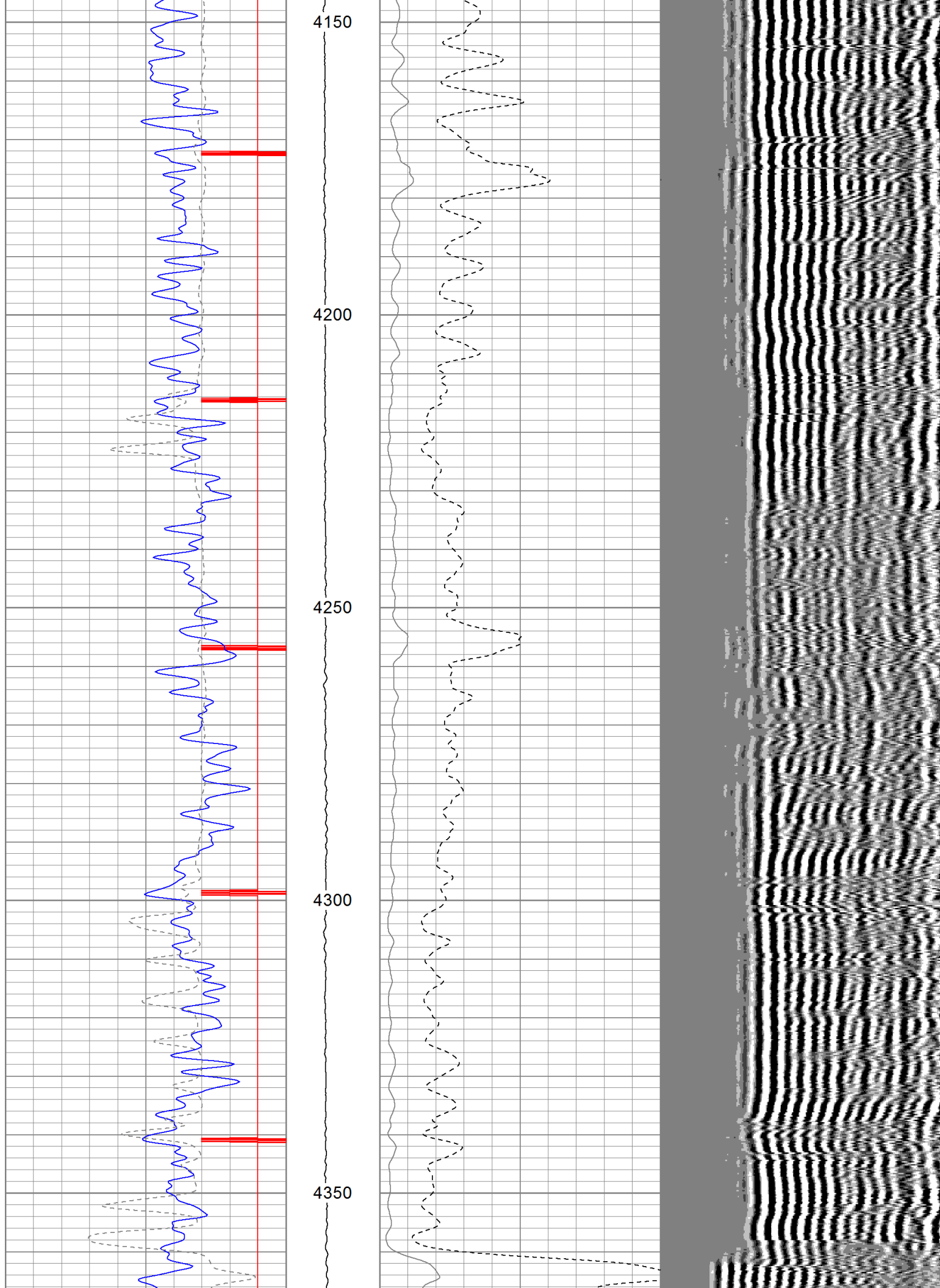




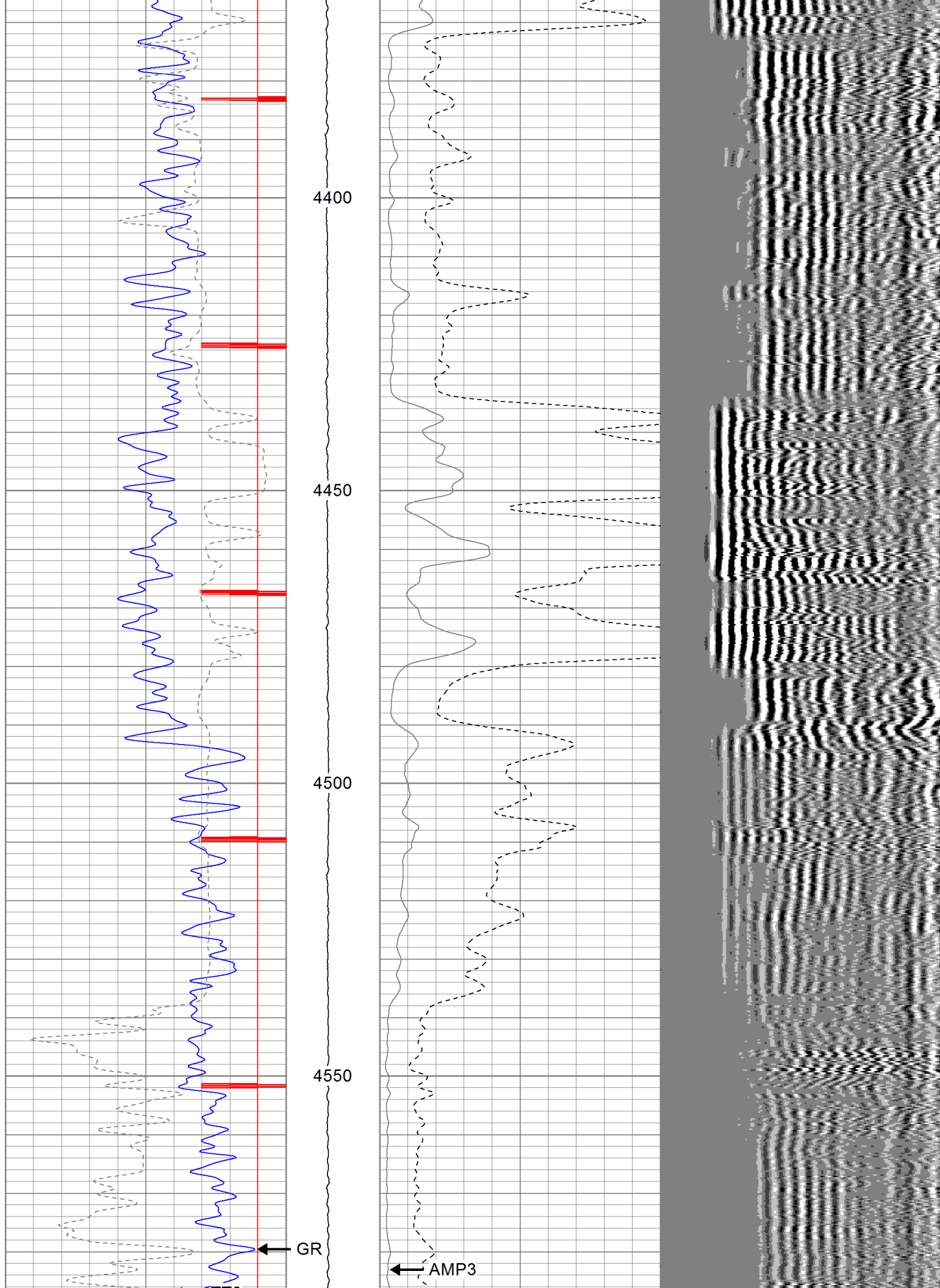




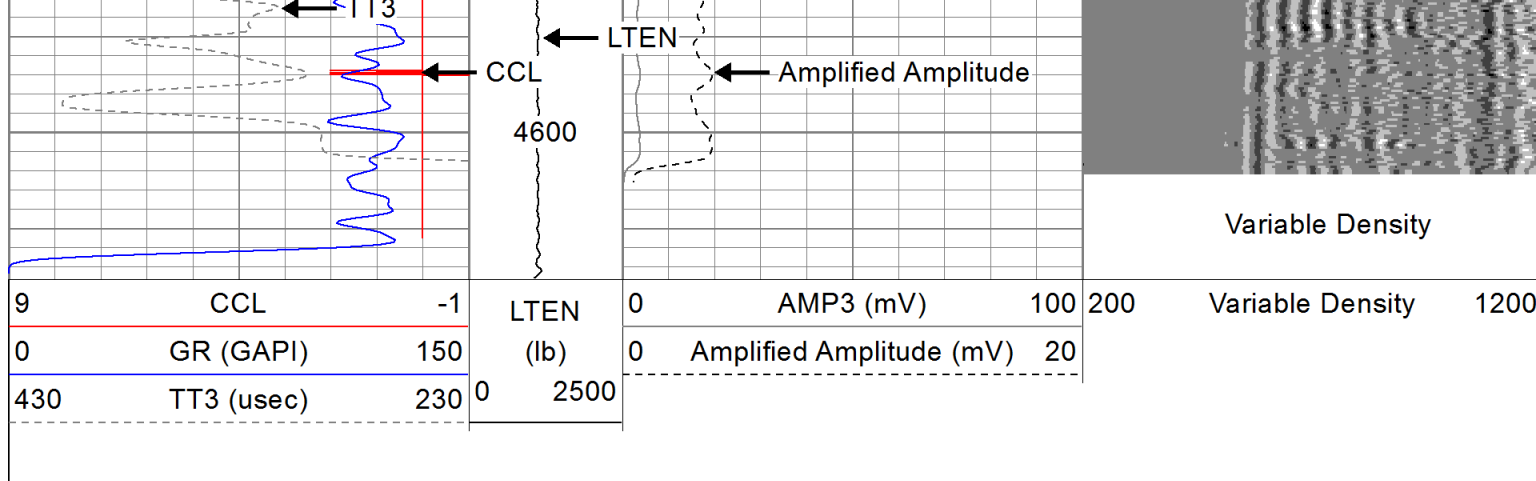






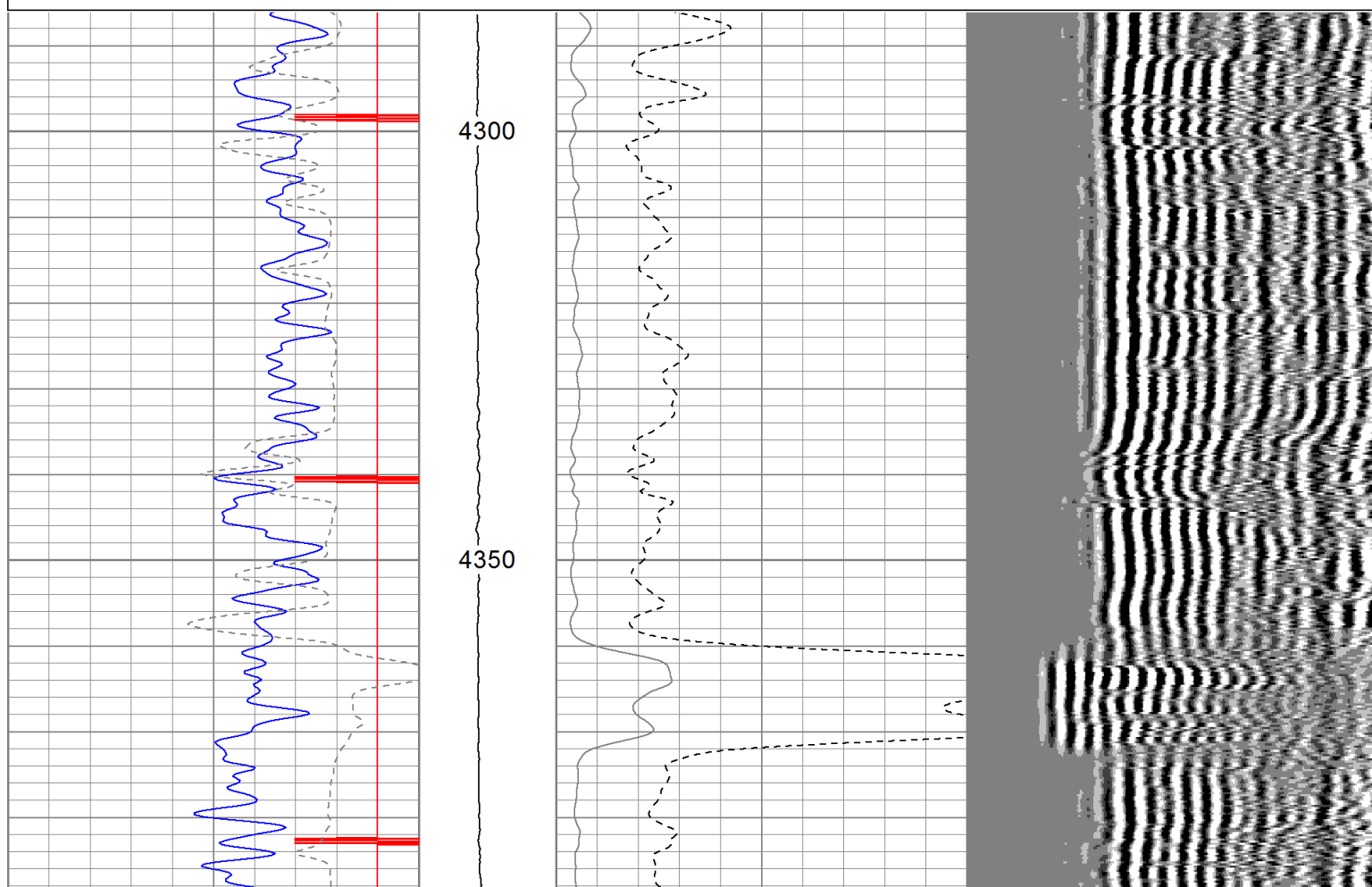
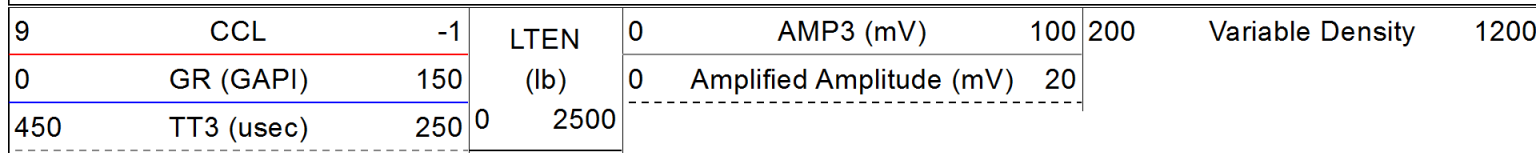


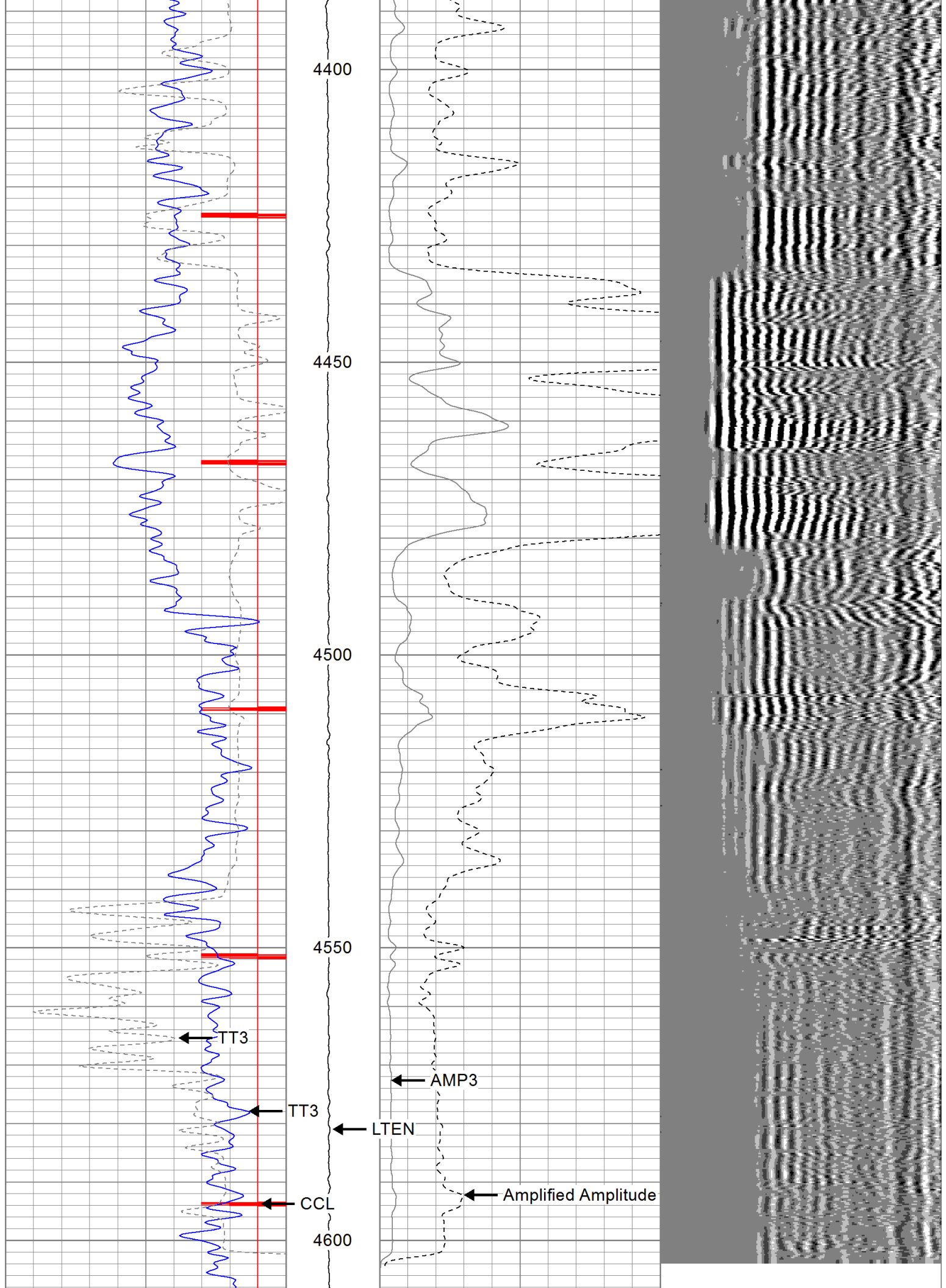


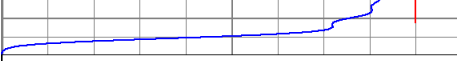


## Repeat Section

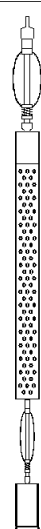
Database File: br fed 4a-18-1-103.db  
 Dataset Pathname: pass3  
 Presentation Format: cbl  
 Dataset Creation: Wed Oct 03 11:54:56 2012 by Log Std Casedhole 10081  
 Charted by: Depth in Feet scaled 1:240






						Variable Density			
9	CCL	-1	LTEN (lb)	0	AMP3 (mV)	100	200	Variable Density	1200
0	GR (GAPI)	150		0	Amplified Amplitude (mV)	20			
450	TT3 (usec)	250		0-----					

Calibration Report			
Database File:	br fed 4a-18-1-103.db		
Dataset Pathname:	pass4		
Dataset Creation:	Wed Oct 03 12:03:55 2012 by Log Std Casedhole 10081		
Gamma Ray Calibration Report			
Serial Number:	030405		
Tool Model:	P		
Performed:	Wed Sep 19 09:26:14 2012		
Calibrator Value:	150.0	GAPI	
Background Reading:	54.0	cps	
Calibrator Reading:	250.0	cps	
Sensitivity:	0.8000	GAPI/cps	
Cement Bond Log Calibration Report			
Serial Number:	020406		
Tool Model:	P		
Performed:	Wed Sep 19 09:26:35 2012		
Depth:	72.1177	ft	
Casing Diameter:	5.5	in	
	3' Spacing	5' Spacing	
Signal Zero:	1	1	mV
Calibrated Amplitude:	81	81	mV
Reading at Signal Zero:	0.0154785	0.0156494	V
Reading in Free Pipe:	2.01156	2.41799	V
Gain:	40.0785	33.3009	
Offset:	0.379645	0.478862	

Sensor	Offset (ft)	Schematic	Description	Len (ft)	OD (in)	Wt (lb)
WVF3 WVF5	11.90 10.90		None	0.75	1.50	5.00
			TitanBig Big Titan 3 Bowspring Centralizer	3.00	2.75	25.00
			CBL-P (020406) Probe Single Pin	8.75	2.75	45.00
			TitanSmall Small Titan 3 Bowspring Centralizer	2.73	1.69	5.00
CCL	4.08		CCL-Probe (030405)	1.42	2.75	7.50

GR	2.50		Probe 2 3/4" GR-P (030405) Probe 2 3/4"	3.50	2.75	34.00
<p>Dataset: br fed 4a-18-1-103.db: field/well/run1/pass3</p> <p>Total Length: 20.15 ft</p> <p>Total Weight: 121.50 lb</p> <p>O.D. 2.75 in</p>						