

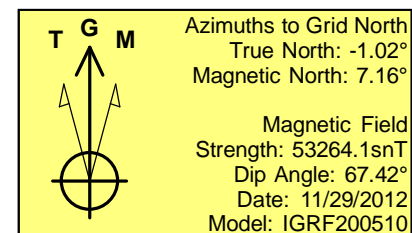
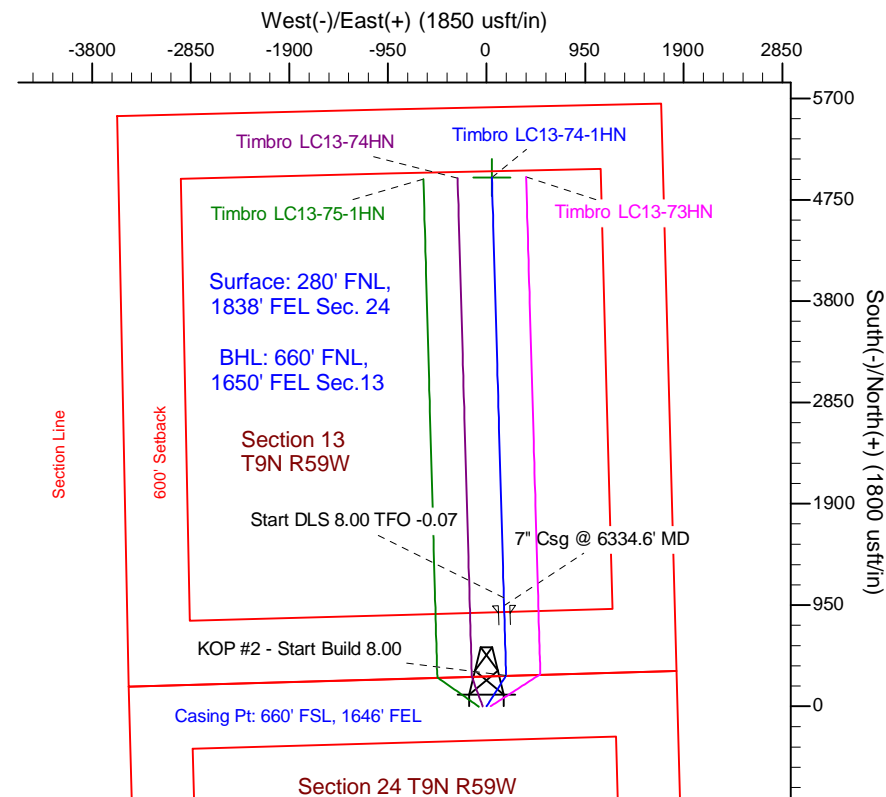
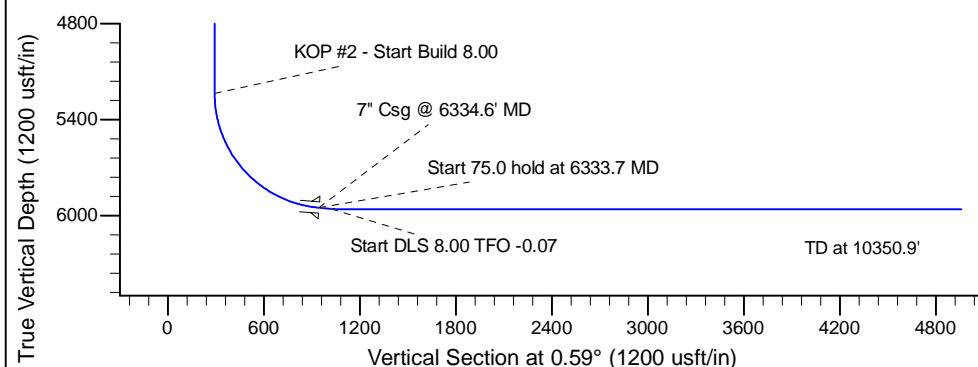
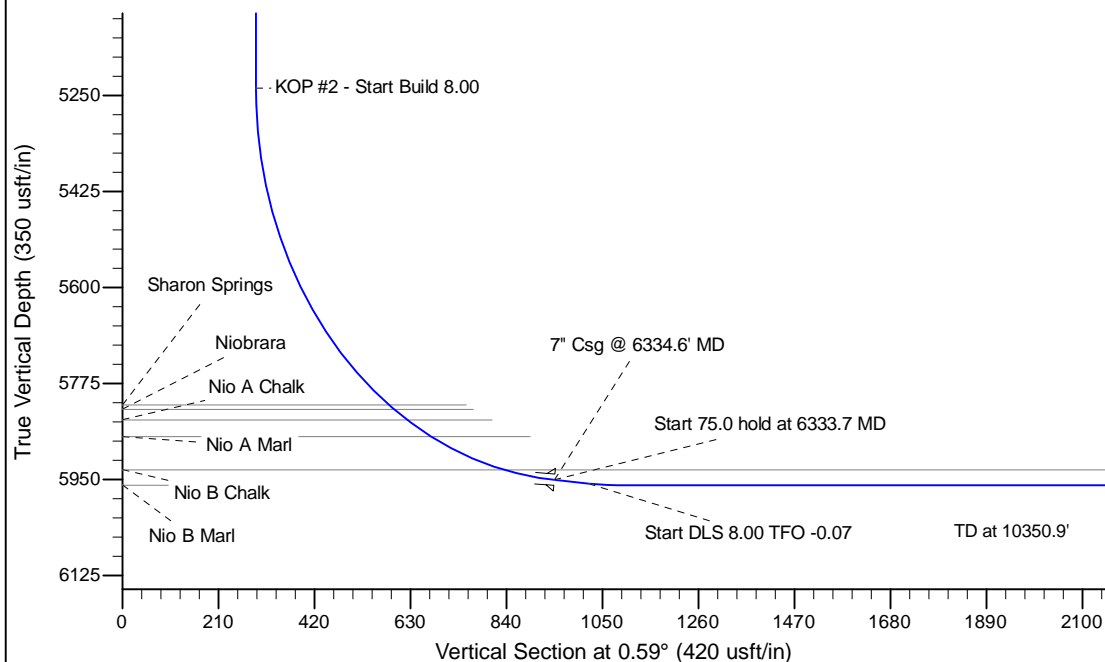
Project: Wattenberg Field
Site: LC (Sec.24-T09N-R59W) Weld County, CO
Well: Timbro LC13-74-1HN
Wellbore: Original Drilling
Design: APD - Rev 0

Northern Region Drilling

Geodetic System: US State Plane 1983
Datum: North American Datum 1983
Ellipsoid: GRS 1980
Zone: Colorado Northern Zone
System Datum: Mean Sea Level

SECTION DETAILS

Sec	MD	Inc	Azi	TVD	+N/-S	+E/-W	Dleg	TFace	VSec	Target
1	0.0	0.00	0.00	0.0	0.0	0.0	0.00	0.00	0.0	
2	2000.0	0.00	0.00	2000.0	0.0	0.0	0.00	0.00	0.0	
3	2519.6	12.99	32.95	2515.2	49.2	31.9	2.50	32.95	49.5	
4	3535.3	12.99	32.95	3504.8	240.8	156.1	0.00	0.00	242.4	
5	4054.9	0.00	0.00	4020.0	290.0	188.0	2.50	180.00	291.9	
6	5272.1	0.00	0.00	5237.2	290.0	188.0	0.00	0.00	291.9	
7	6334.6	85.00	358.32	5950.7	943.5	168.8	8.00	358.32	945.2	
8	6409.6	85.00	358.32	5957.2	1018.2	166.6	0.00	0.00	1019.8	
9	6472.1	90.00	358.32	5960.0	1080.6	164.8	8.00	0.02	1082.2	
10	10350.9	90.00	358.32	5960.0	4957.7	51.2	0.00	0.00	4958.0	Timbro LC13-74-1HN BHL 660'FNL, 1650'FEL



WELL DETAILS: Timbro LC13-74-1HN

Ground Level:	4856.0
Northing	1517366.89
Easting	3436856.17
Latitude	40.742900
Longitude	-103.923397

Plan: APD - Rev 0 (Timbro LC13-74-1HN/Original Drilling)

Created By: Carrie Willers	Date: 14:39, December 10 2012
Checked: _____	Date: _____
Reviewed: _____	Date: _____
Approved: _____	Date: _____