

WELL LOCATION PLAT
T9N, R59W, 6th P.M.

NOBLE ENERGY, INC.

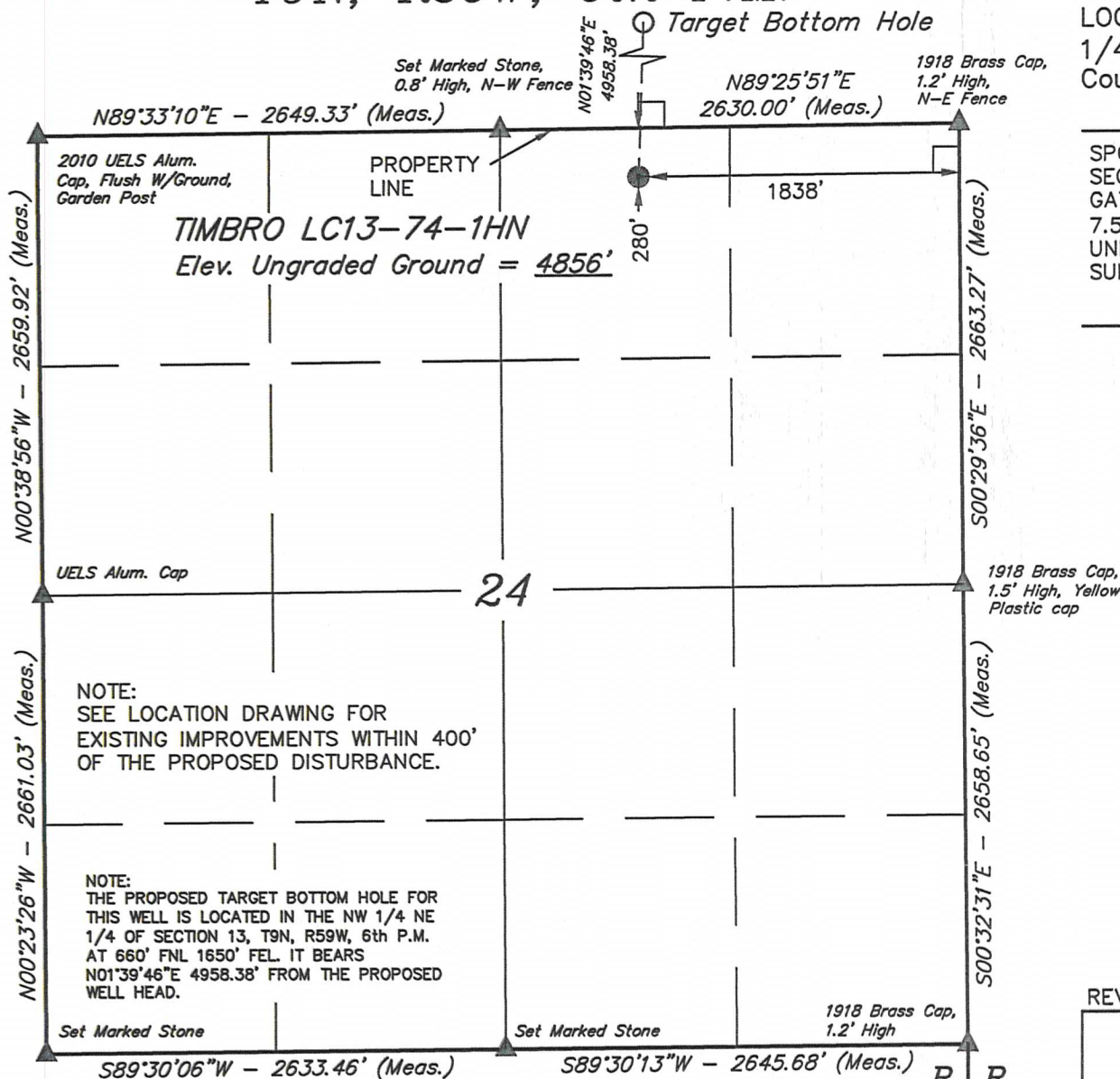
Well location, TIMBRO LC13-74-1HN (SURFACE LOCATION), located as shown in the NW 1/4 NE 1/4 of Section 24, T9N, R59W, 6th P.M., Weld County, Colorado.

BASIS OF ELEVATION

SPOT ELEVATION LOCATED AT THE NORTHEAST CORNER OF SECTION 15, T9N, R58W, 6th P.M. TAKEN FROM THE GATEHOOK SPRING, QUADRANGLE, COLORADO, WELD COUNTY, 7.5 MINUTE QUAD (TOPOGRAPHIC MAP) PUBLISHED BY THE UNITED STATES DEPARTMENT OF THE INTERIOR, GEOLOGICAL SURVEY. SAID ELEVATION IS MARKED AS BEING 4679 FEET.

BASIS OF BEARINGS

BASIS OF BEARINGS IS A G.P.S. OBSERVATION.



A north arrow pointing upwards, labeled with an 'N' inside a circle. Below the arrow is a graphic scale bar with alternating black and white segments. The scale is marked with '1000'', '500'', '0', and '1000'' from left to right. The word 'SCALE' is printed below the bar.

CERTIFICATE

THIS IS TO CERTIFY THAT THE ABOVE MAP WAS PREPARED FROM
FIELD NOTES OF ACTUAL SURVEYS MADE BY ME OR UNDER MY
SUPERVISION AND THAT THE SAME ARE TRUE AND CORRECT TO THE
BEST OF MY KNOWLEDGE AND BELIEF.

REGISTERED LAND SURVEYOR
REGISTRATION NO. 17492
STATE OF COLORADO
90-19-12

REVISÉD: 10-18-12

UINTAH ENGINEERING & LAND SURVEYING

85 SOUTH 200 EAST - VERNAL UTAH 84078

(435) 789-1017

SCALE 1" = 1000'

DATE SURVEYED:	09-03-12
----------------	----------

DATE DRAWN:
10-01-12

PARTY	ZANE BULLARD	A.G.	J.M.H.
-------	--------------	------	--------

REFERENCES
G.L.O. PLAT

WEATHER	WARM
---------	------

FILE	NOBLE ENERGY, INC.
------	--------------------

LEGEND:

\perp = 90° SYMBOL

● = PROPOSED WELL HEAD.

▲ = SECTION CORNERS LOCATED.

FEATURE TABLE

EXISTING FEATURE	DIRECTION	LENGTH
PROPERTY LINE	NORTH	280'

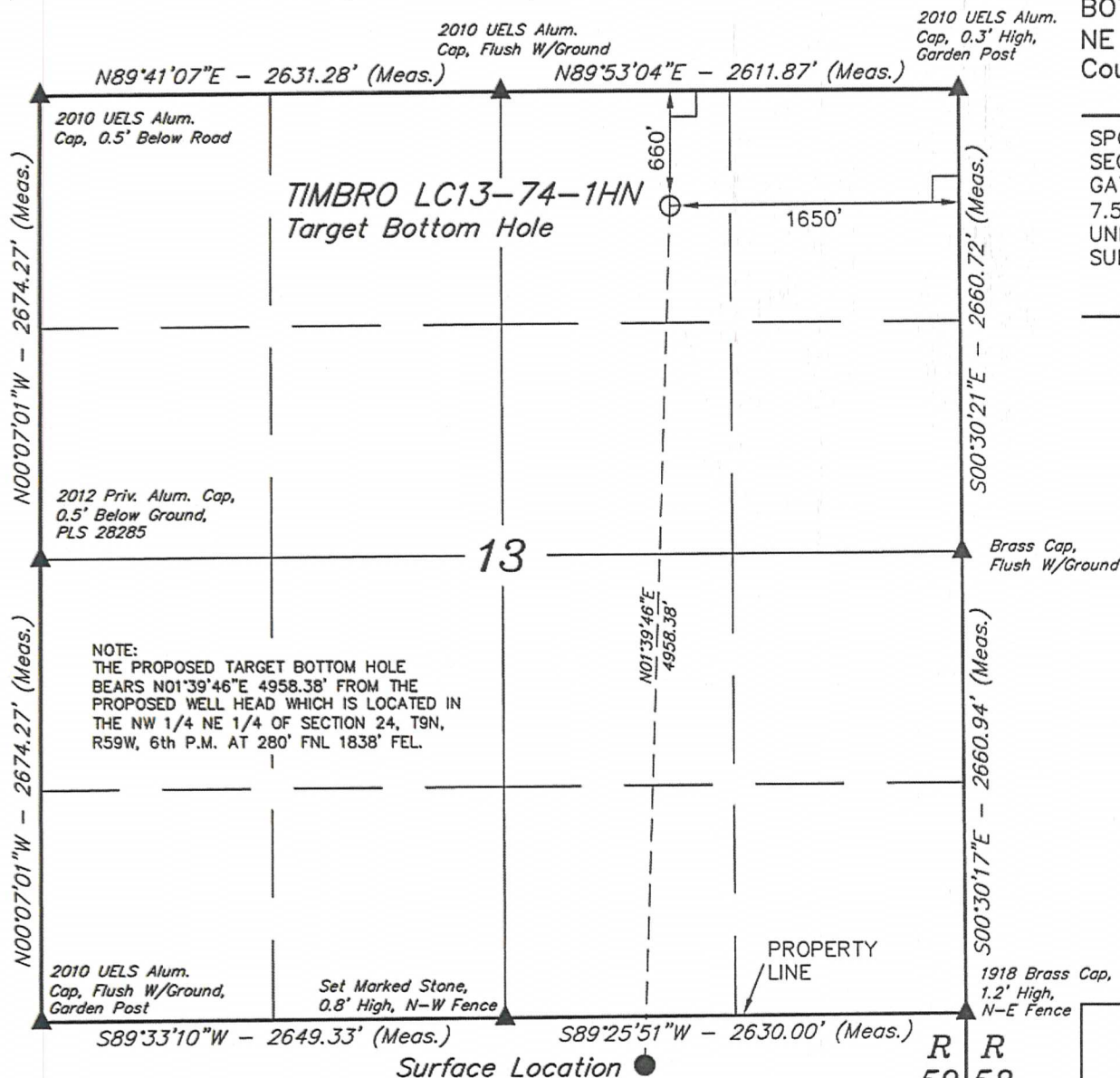
59	58
W	W

PDOP = 1.9

NAD 83 (SURFACE LOCATION)

LATITUDE = 40°44'34.44" (40.742900)
LONGITUDE = 103°55'24.23" (103.923397)

WELL LOCATION PLAT T9N, R59W, 6th P.M.



NOBLE ENERGY, INC.

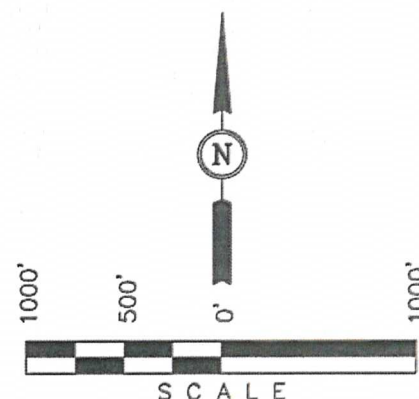
Well location, TIMBRO LC13-74-1HN (TARGET BOTTOM HOLE), located as shown in the NW 1/4 NE 1/4 of Section 13, T9N, R59W, 6th P.M., Weld County, Colorado.

BASIS OF ELEVATION

SPOT ELEVATION LOCATED AT THE NORTHEAST CORNER OF SECTION 15, T9N, R58W, 6th P.M. TAKEN FROM THE GATEHOOK SPRING, QUADRANGLE, COLORADO, WELD COUNTY, 7.5 MINUTE QUAD (TOPOGRAPHIC MAP) PUBLISHED BY THE UNITED STATES DEPARTMENT OF THE INTERIOR, GEOLOGICAL SURVEY. SAID ELEVATION IS MARKED AS BEING 4679 FEET.

BASIS OF BEARINGS

BASIS OF BEARINGS IS A G.P.S. OBSERVATION.



CERTIFICATE

THIS IS TO CERTIFY THAT THE ABOVE PLAT WAS PREPARED FROM FIELD NOTES OF ACTUAL SURVEYS MADE BY ME OR UNDER MY SUPERVISION AND THAT THE SAME ARE TRUE AND CORRECT TO THE BEST OF MY KNOWLEDGE AND BELIEF.

REGISTERED LAND SURVEYOR
REGISTRATION NO. 17492
STATE OF COLORADO

UINTAH ENGINEERING & LAND SURVEYING
85 SOUTH 200 EAST - VERNAL, UTAH 84078
(435) 789-1017

LEGEND:

- └─┘ = 90° SYMBOL
- = PROPOSED WELL HEAD.
- ▲ = SECTION CORNERS LOCATED.

FEATURE TABLE

EXISTING FEATURE	DIRECTION	LENGTH
PROPERTY LINE	NORTH	280'

NAD 83 (TARGET BOTTOM HOLE)

LATITUDE = 40°45'23.41" (40.756503)
LONGITUDE = 103°55'22.42" (103.922894)

SHEET 2 OF 2

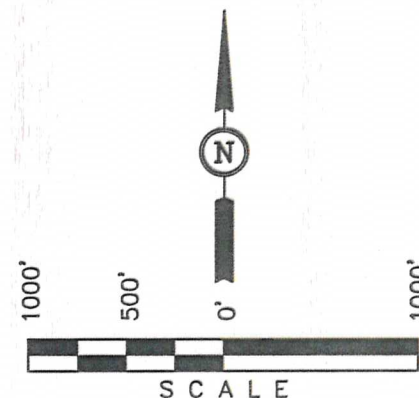
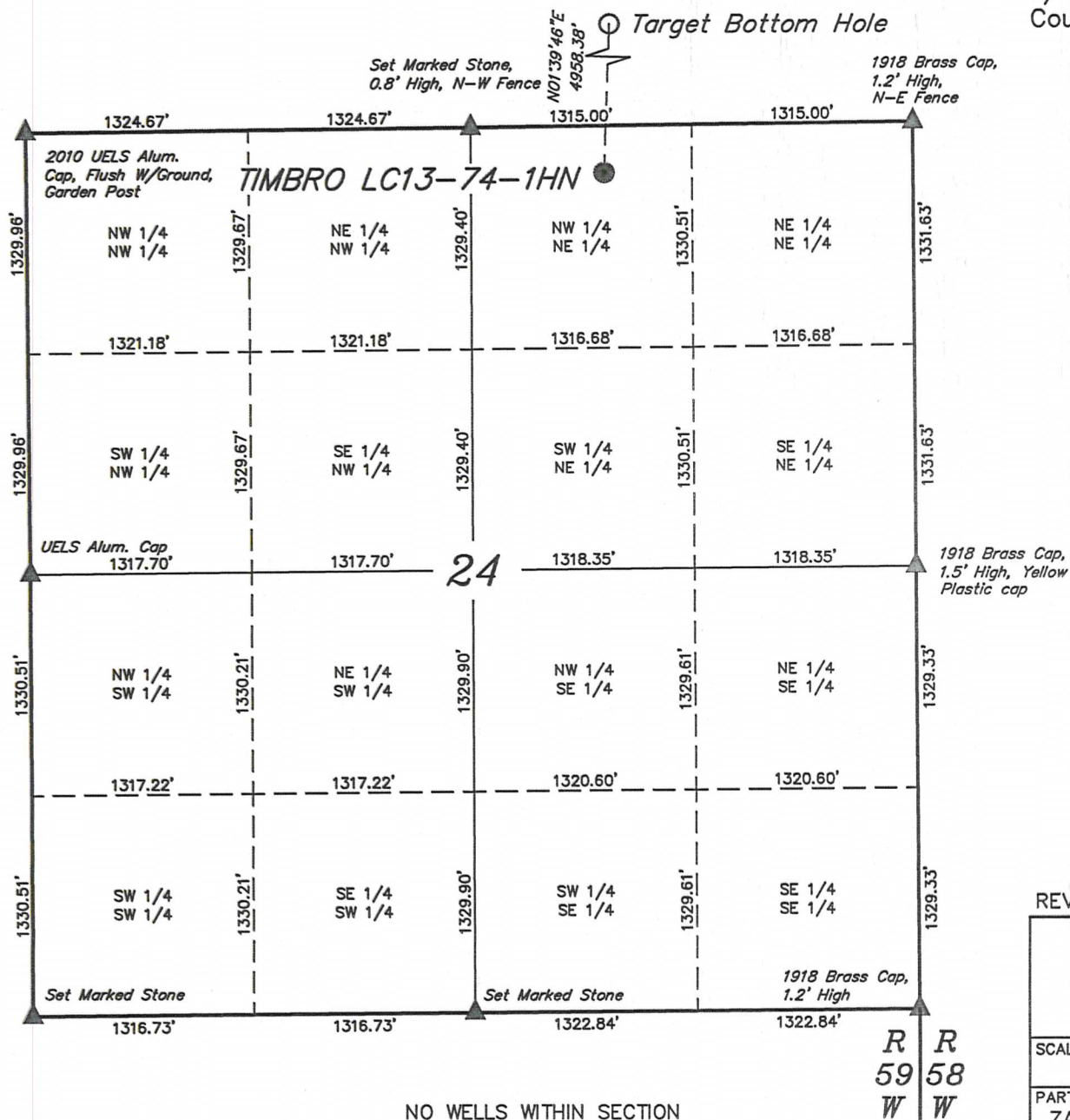
SCALE 1" = 1000'	DATE SURVEYED: 09-03-12	DATE DRAWN: 10-01-12
PARTY ZANE BULLARD A.G. J.M.H.	REFERENCES G.L.O. PLAT	
WEATHER WARM	FILE NOBLE ENERGY, INC.	

SITE SKETCH

T9N, R59W, 6th P.M.

NOBLE ENERGY, INC.

Well location, TIMBRO LC13-74-1HN (SURFACE LOCATION), located as shown in the NW 1/4 NE 1/4 of Section 24, T9N, R59W, 6th P.M., Weld County, Colorado.



NOTE:
THE PROPOSED TARGET BOTTOM HOLE FOR THIS WELL IS LOCATED IN THE NW 1/4 NE 1/4 OF SECTION 13, T9N, R59W, 6th P.M. AT 660' FNL 1650' FEL. IT BEARS N01°39'46"E 4958.38' FROM THE PROPOSED WELL HEAD.

LEGEND:

- ▲ = SECTION CORNERS LOCATED.
- = PROPOSED WELL HEAD.
- = TARGET BOTTOM HOLE.

REVISED: 10-18-12

UINTAH ENGINEERING & LAND SURVEYING
85 SOUTH 200 EAST - VERNAL, UTAH 84078
(435) 789-1017

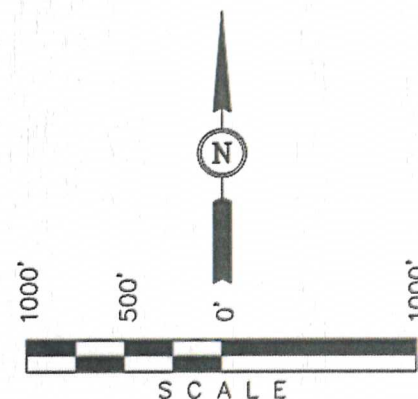
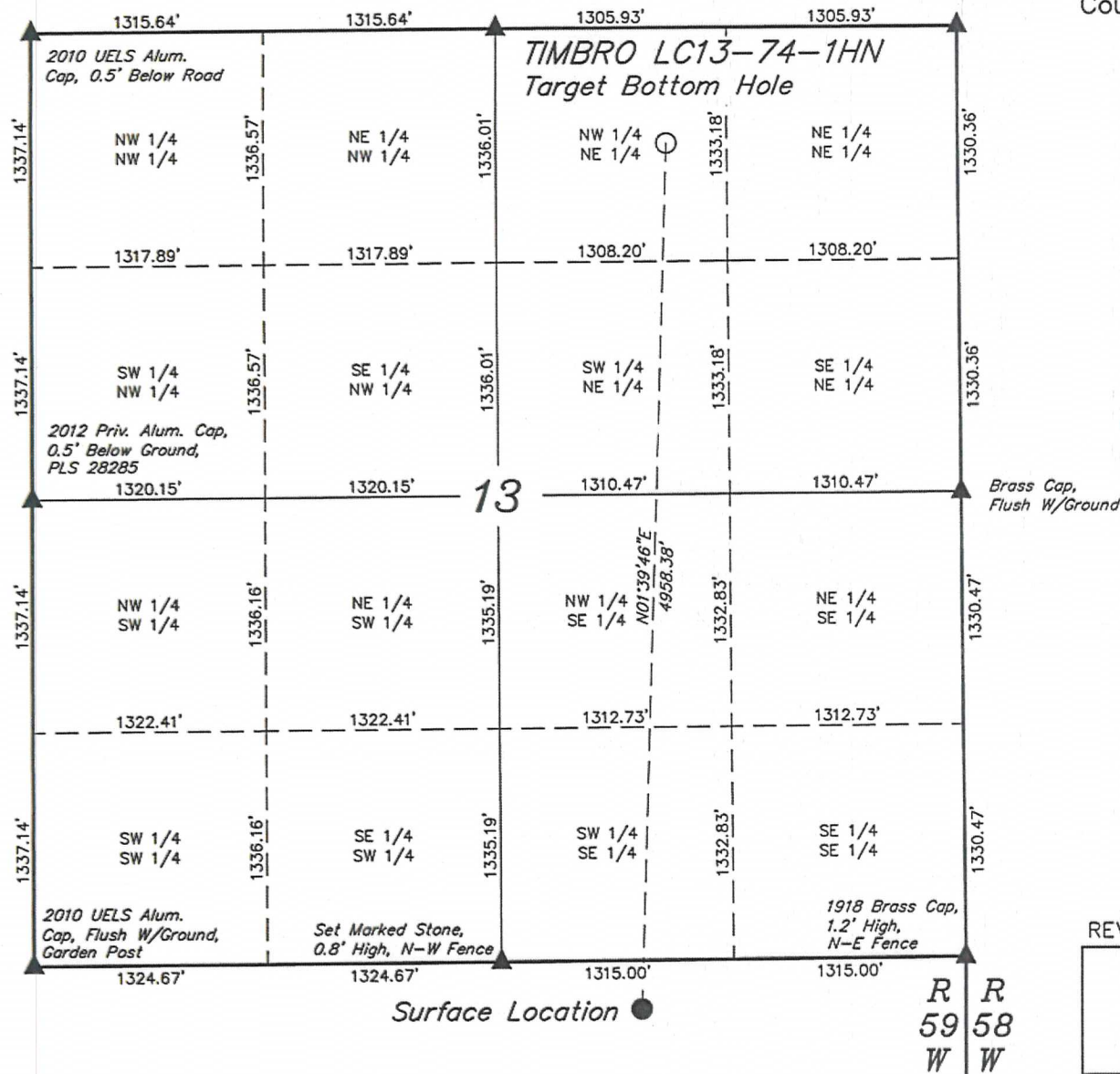
SCALE 1" = 1000'	DATE SURVEYED: 09-03-12	DATE DRAWN: 10-01-12
PARTY ZANE BULLARD A.G. J.M.H.	REFERENCES G.L.O. PLAT	
WEATHER WARM	FILE NOBLE ENERGY, INC.	

NO WELLS WITHIN SECTION

2010 UELS Alum.
Cap, Flush W/Ground

2010 UELS Alum.
Cap, 0.3' High,
Garden Post

Well location, TIMBRO LC13-74-1HN (TARGET BOTTOM HOLE), located as shown in the NW 1/4 NE 1/4 of Section 13, T9N, R59W, 6th P.M., Weld County, Colorado.



NOTE:
THE PROPOSED TARGET BOTTOM HOLE
BEARS N01°39'46"E 4958.38' FROM THE
PROPOSED WELL HEAD WHICH IS LOCATED IN
THE NW 1/4 NE 1/4 OF SECTION 24, T9N,
R59W, 6th P.M. AT 280' FNL 1838' FEL.

▲ = SECTION CORNERS LOCATED.
● = PROPOSED WELL HEAD.
○ = TARGET BOTTOM HOLE.

REVISÉD: 10-15-12

UINTAH ENGINEERING & LAND SURVEYING
85 SOUTH 200 EAST - VERNAL, UTAH 84078
(435) 789-1017

SCALE 1" = 1000'	DATE SURVEYED: 09-03-12	DATE DRAWN: 10-01-12
PARTY ZANE BULLARD A.G. J.M.H.	REFERENCES G.L.O. PLAT	
WEATHER WARM	FILE NOBLE ENERGY, INC.	

NO WELLS WITHIN SECTION