



# WELL LOCATION PLAT T9N, R59W, 6th P.M.

NOBLE ENERGY, INC.

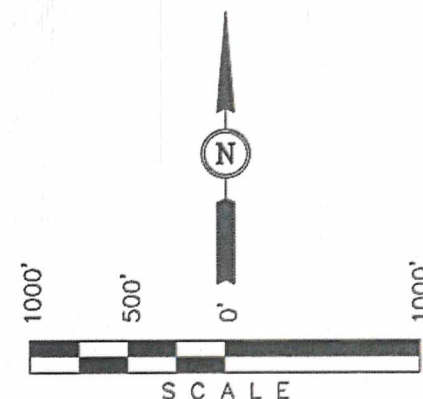
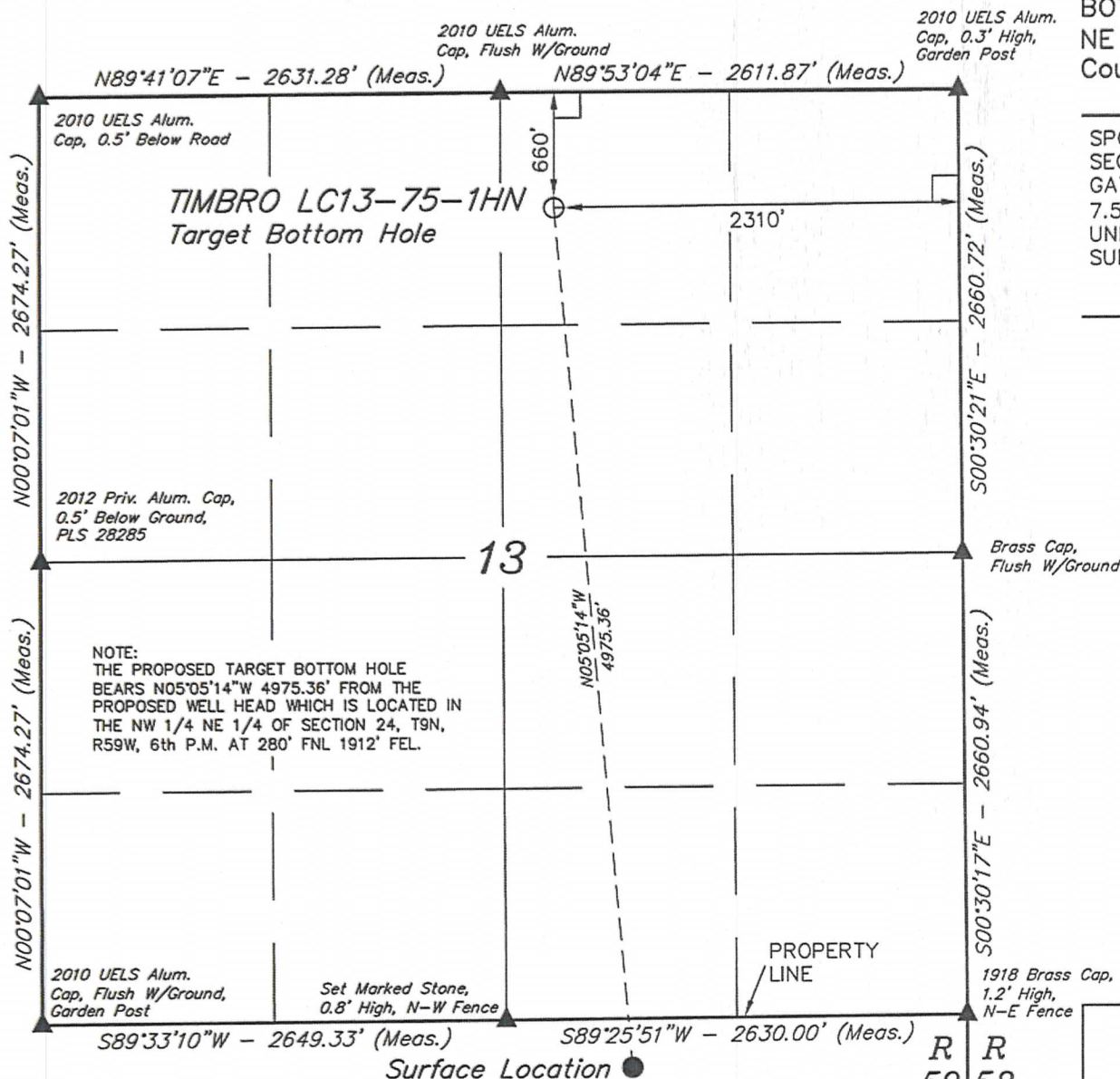
Well location, TIMBRO LC13-75-1HN (TARGET BOTTOM HOLE), located as shown in the NW 1/4 NE 1/4 of Section 13, T9N, R59W, 6th P.M., Weld County, Colorado.

## BASIS OF ELEVATION

SPOT ELEVATION LOCATED AT THE NORTHEAST CORNER OF SECTION 15, T9N, R58W, 6th P.M. TAKEN FROM THE GATEHOOK SPRING, QUADRANGLE, COLORADO, WELD COUNTY, 7.5 MINUTE QUAD (TOPOGRAPHIC MAP) PUBLISHED BY THE UNITED STATES DEPARTMENT OF THE INTERIOR, GEOLOGICAL SURVEY. SAID ELEVATION IS MARKED AS BEING 4679 FEET.

## BASIS OF BEARINGS

BASIS OF BEARINGS IS A G.P.S. OBSERVATION.



## CERTIFICATE

THIS IS TO CERTIFY THAT THE ABOVE PLAT WAS PREPARED FROM FIELD NOTES OF ACTUAL SURVEYS MADE BY ME OR UNDER MY SUPERVISION AND THAT THE SAME ARE TRUE AND CORRECT TO THE BEST OF MY KNOWLEDGE AND BELIEF.

REGISTERED LAND SURVEYOR  
REGISTRATION NO. 17492  
STATE OF COLORADO  
09-08-12

## LEGEND:

- └─┘ = 90° SYMBOL
- = PROPOSED WELL HEAD.
- ▲ = SECTION CORNERS LOCATED.

## FEATURE TABLE

EXISTING FEATURE	DIRECTION	LENGTH
PROPERTY LINE	NORTH	280'

SHEET 2 OF 2

NAD 83 (TARGET BOTTOM HOLE)  
LATITUDE = 40°45'23.39" (40.756497)  
LONGITUDE = 103°55'30.99" (103.925275)

UINTAH ENGINEERING & LAND SURVEYING  
85 SOUTH 200 EAST - VERNAL, UTAH 84078  
(435) 789-1017

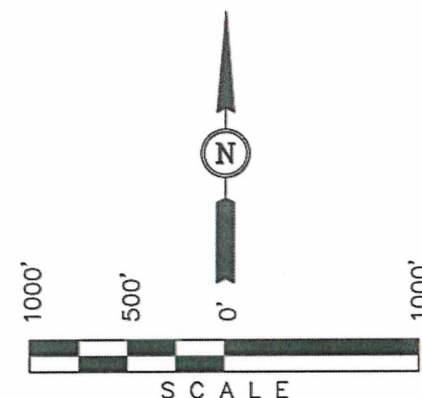
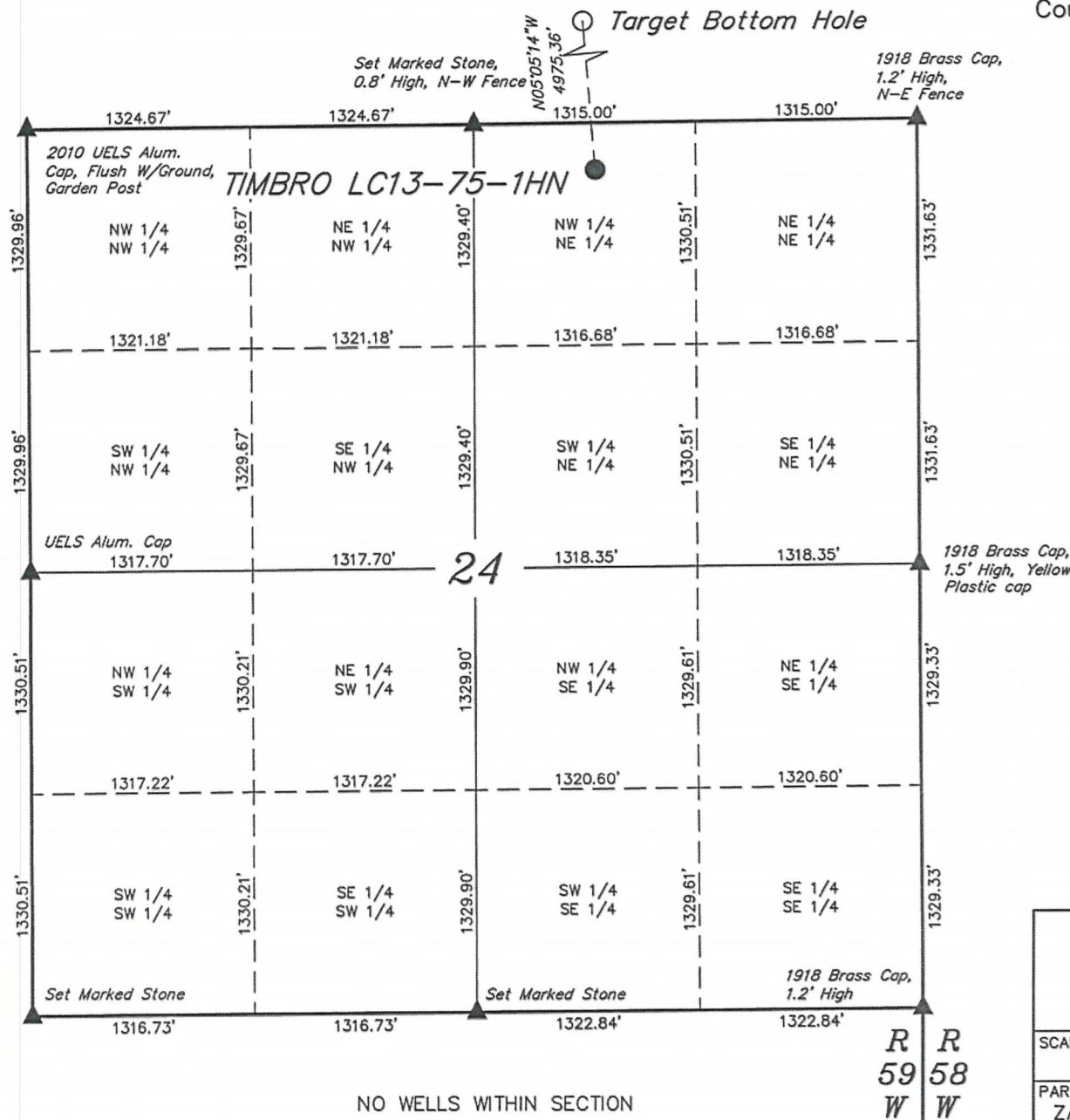
SCALE 1" = 1000'	DATE SURVEYED: 09-03-12	DATE DRAWN: 10-02-12
PARTY ZANE BULLARD A.G. J.M.H.	REFERENCES G.L.O. PLAT	
WEATHER WARM	FILE NOBLE ENERGY, INC.	



# SITE SKETCH T9N, R59W, 6th P.M.

NOBLE ENERGY, INC.

Well location, TIMBRO LC13-75-1HN (SURFACE LOCATION), located as shown in the NW 1/4 NE 1/4 of Section 24, T9N, R59W, 6th P.M., Weld County, Colorado.



NOTE:  
THE PROPOSED TARGET BOTTOM HOLE FOR THIS WELL IS LOCATED IN THE NW 1/4 NE 1/4 OF SECTION 13, T9N, R59W, 6th P.M. AT 660' FNL 2310' FEL. IT BEARS N05°05'14"W 4975.36' FROM THE PROPOSED WELL HEAD.

## LEGEND:

- ▲ = SECTION CORNERS LOCATED.
- = PROPOSED WELL HEAD.
- = TARGET BOTTOM HOLE.

UINTAH ENGINEERING & LAND SURVEYING  
85 SOUTH 200 EAST - VERNAL, UTAH 84078  
(435) 789-1017

SCALE 1" = 1000'	DATE SURVEYED: 09-03-12	DATE DRAWN: 10-02-12
PARTY ZANE BULLARD A.G. J.M.H.	REFERENCES G.L.O. PLAT	
WEATHER WARM	FILE NOBLE ENERGY, INC.	

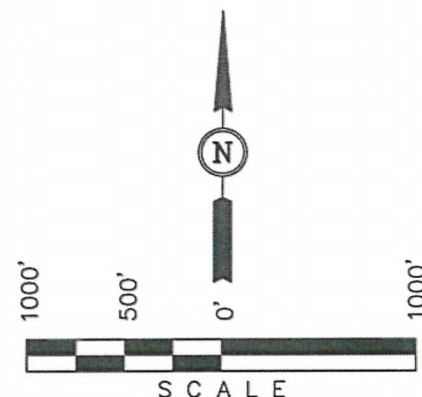
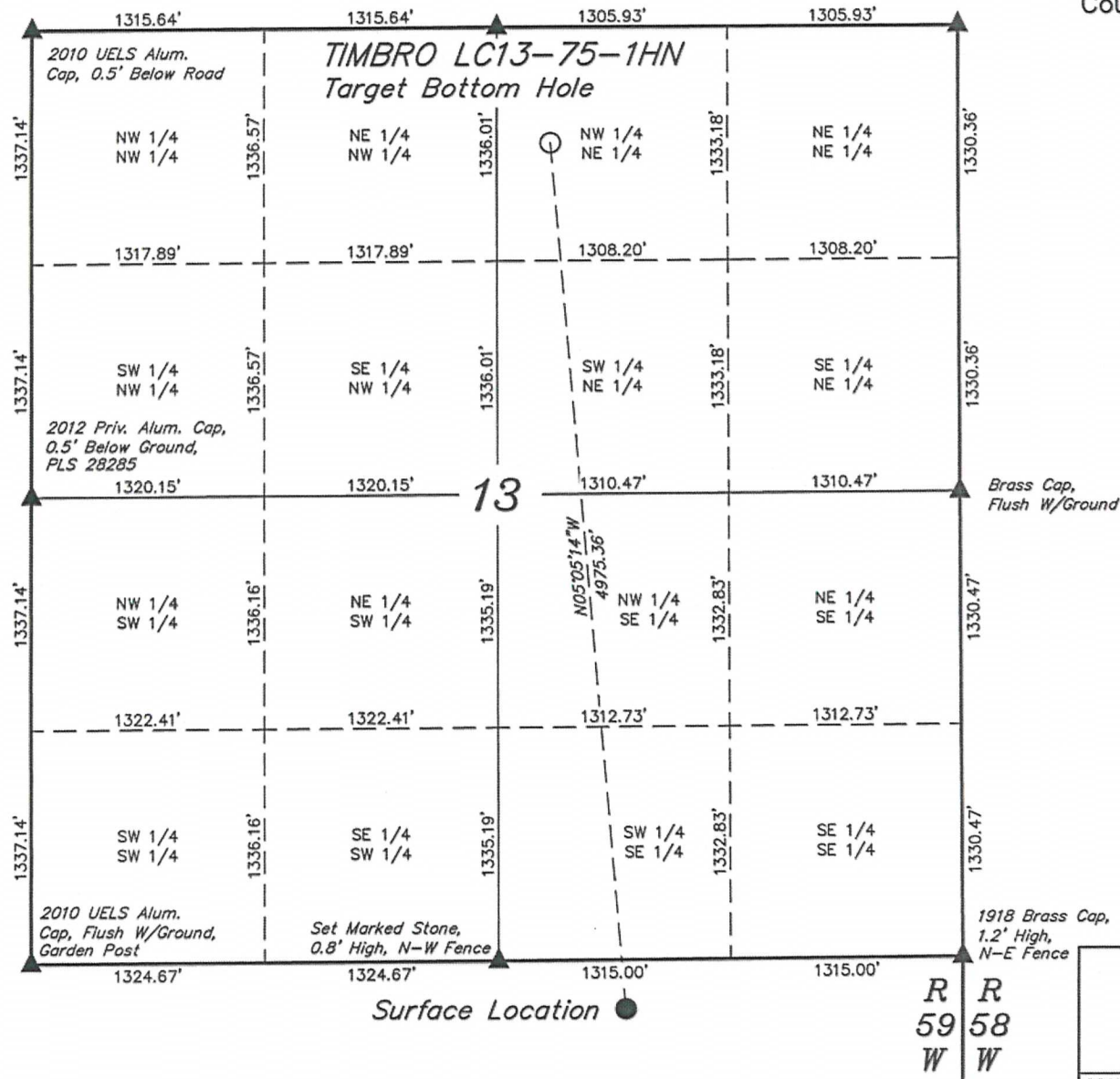
# SITE SKETCH T9N, R59W, 6th P.M.

NOBLE ENERGY, INC.

Well location, TIMBRO LC13-75-1HN (TARGET BOTTOM HOLE), located as shown in the NW 1/4 NE 1/4 of Section 13, T9N, R59W, 6th P.M., Weld County, Colorado.

2010 UELS Alum.  
Cap, 0.3' High,  
Garden Post

2010 UELS Alum.  
Cap, Flush W/Ground



NOTE:  
THE PROPOSED TARGET BOTTOM HOLE  
BEARS N05°05'14"W 4975.36' FROM THE  
PROPOSED WELL HEAD WHICH IS LOCATED IN  
THE NW 1/4 NE 1/4 OF SECTION 24, T9N,  
R59W, 6th P.M. AT 280' FNL 1912' FEL.

## LEGEND:

- ▲ = SECTION CORNERS LOCATED.
- = PROPOSED WELL HEAD.
- = TARGET BOTTOM HOLE.

NO WELLS WITHIN SECTION

SHEET 2 OF 2

UINTAH ENGINEERING & LAND SURVEYING  
85 SOUTH 200 EAST - VERNAL, UTAH 84078  
(435) 789-1017

SCALE 1" = 1000'	DATE SURVEYED: 09-03-12	DATE DRAWN: 10-02-12
PARTY ZANE BULLARD A.G. J.M.H.	REFERENCES G.L.O. PLAT	
WEATHER WARM	FILE NOBLE ENERGY, INC.	