

HALLIBURTON

WPX ENERGY ROCKY MOUNTAIN LLC-EBUS

**SG 323-27
GRAND VALLEY
Garfield County , Colorado**

Cement Surface Casing

28-Apr-2012

Post Job Summary

The Road to Excellence Starts with Safety

The Road to Excellence Starts With Safety

Sold To #: 300721	Ship To #: 300721	Quote #:	Sales Order #: 9471994
Customer: WPX ENERGY ROCKY MOUNTAIN LLC-EBUS		Customer Rep: Moore, Frank	
Well Name: SG		Well #: 323-27	API/UWI #: 05-045-17784
Field: GRAND VALLEY	City (SAP): PARACHUTE	County/Parish: Garfield	State: Colorado
Lat: N 39.494 deg. OR N 39 deg. 29 min. 36.686 secs.		Long: W 107.871 deg. OR W -108 deg. 7 min. 42.92 secs.	
Contractor: NABORS 573		Rig/Platform Name/Num: NABORS 573	
Job Purpose: Cement Surface Casing			
Well Type: Development Well		Job Type: Cement Surface Casing	
Sales Person: MAYO, MARK		Srvc Supervisor: YOUNG, JEREMY	MBU ID Emp #: 418013

Job Personnel

HES Emp Name	Exp Hrs	Emp #	HES Emp Name	Exp Hrs	Emp #	HES Emp Name	Exp Hrs	Emp #
ANDREWS, ANTHONY Michael	6.5	321604	BURKE, BRENDAN Patrick	6.5	487782	GOWEN, WESLEY M	6.5	496205
YOUNG, JEREMY R	6.5	418013						

Equipment

HES Unit #	Distance-1 way	HES Unit #	Distance-1 way	HES Unit #	Distance-1 way	HES Unit #	Distance-1 way
10783493	60 mile	10822007	60 mile	11259881	60 mile	11560046	60 mile
11808833	60 mile						

Job Hours

Date	On Location Hours	Operating Hours	Date	On Location Hours	Operating Hours	Date	On Location Hours	Operating Hours
04/27/2012	1.5	0	04/28/2012	5	3			
TOTAL			Total is the sum of each column separately					

Job

Job Times

Formation Name	Formation Depth (MD)	Top	Bottom	Called Out	Date	Time	Time Zone
Form Type		BHST		On Location	27 - Apr - 2012	19:30	MST
Job depth MD	1129. ft	Job Depth TVD	1129. ft	Job Started	27 - Apr - 2012	22:30	MST
Water Depth		Wk Ht Above Floor	4. ft	Job Completed	28 - Apr - 2012	02:44	MST
Perforation Depth (MD)	From	To		Job Completed	28 - Apr - 2012	03:41	MST
				Departed Loc	28 - Apr - 2012	05:00	MST

Well Data

Description	New / Used	Max pressure psig	Size in	ID in	Weight lbm/ft	Thread	Grade	Top MD ft	Bottom MD ft	Top TVD ft	Bottom TVD ft
13 1/2" OPEM HOLE				13.5				.	1170.		
9 5/8" SURFACE CASING	Unknown		9.625	9.001	32.3		H-40	.	1129.		

Tools and Accessories

Type	Size	Qty	Make	Depth	Type	Size	Qty	Make	Depth	Type	Size	Qty	Make
Guide Shoe					Packer					Top Plug	9.625	1	HES
Float Shoe					Bridge Plug					Bottom Plug			
Float Collar					Retainer					SSR plug set			
Insert Float										Plug Container	9.625	1	HES
Stage Tool										Centralizers			

Miscellaneous Materials

Gelling Agt	Conc	Surfactant	Conc	Acid Type	Qty	Conc	%
Treatment Fld	Conc	Inhibitor	Conc	Sand Type	Size	Qty	

Fluid Data

Stage/Plug #: 1									
Fluid #	Stage Type	Fluid Name	Qty	Qty uom	Mixing Density lbm/gal	Yield ft ³ /sk	Mix Fluid Gal/sk	Rate bbl/min	Total Mix Fluid Gal/sk

HALLIBURTON***Cementing Job Summary***

Stage/Plug #: 1									
Fluid #	Stage Type	Fluid Name	Qty	Qty uom	Mixing Density lbm/gal	Yield ft ³ /sk	Mix Fluid Gal/sk	Rate bbl/min	Total Mix Fluid Gal/sk
1	Fresh Water Spacer	FRESH WATER	20.00	bbl	8.33	.0	.0	4	
2	Lead Cement	VERSACEM (TM) SYSTEM (452010)	165.0	sacks	12.3	2.38	13.75	8	13.75
	13.75 Gal	FRESH WATER							
3	Tail Cement	VERSACEM (TM) SYSTEM (452010)	160.0	sacks	12.8	2.11	11.75	8	11.75
	11.75 Gal	FRESH WATER							
4	Fresh Water Displacement	FRESH WATER	85.50	bbl	8.33	.0	.0	10	
Calculated Values		Pressures		Volumes					
Displacement	85.5	Shut In: Instant		Lost Returns	NO	Cement Slurry	130	Pad	
Top Of Cement	SURFACE	5 Min		Cement Returns	25	Actual Displacement	85.5	Treatment	
Frac Gradient		15 Min		Spacers	20	Load and Breakdown		Total Job	235.5
Rates									
Circulating	12	Mixing	8	Displacement	10	Avg. Job	9		
Cement Left In Pipe	Amount	43.2 ft	Reason	Shoe Joint					
Frac Ring # 1 @	ID	Frac ring # 2 @	ID	Frac Ring # 3 @	ID	Frac Ring # 4 @	ID		
The Information Stated Herein Is Correct				Customer Representative Signature					

The Road to Excellence Starts with Safety

Sold To #: 300721	Ship To #: 300721	Quote #:	Sales Order #: 9471994
Customer: WPX ENERGY ROCKY MOUNTAIN LLC-EBUS	Customer Rep: Moore, Frank		
Well Name: SG	Well #: 323-27	API/UWI #: 05-045-17784	
Field: GRAND VALLEY	City (SAP): PARACHUTE	County/Parish: Garfield	State: Colorado
Legal Description:			
Lat: N 39.494 deg. OR N 39 deg. 29 min. 36.686 secs.		Long: W 107.871 deg. OR W -108 deg. 7 min. 42.92 secs.	
Contractor: NABORS 573	Rig/Platform Name/Num: NABORS 573		
Job Purpose: Cement Surface Casing		Ticket Amount:	
Well Type: Development Well	Job Type: Cement Surface Casing		
Sales Person: MAYO, MARK	Svc Supervisor: YOUNG, JEREMY	MBU ID Emp #: 418013	

Activity Description	Date/Time	Cht #	Rate bbl/ min	Volume bbl		Pressure psig		Comments
				Stage	Total	Tubing	Casing	
Call Out	04/27/2012 19:30							
Pre-Convoy Safety Meeting	04/27/2012 21:20							WITH ALL HES PERSONNEL
Crew Leave Yard	04/27/2012 21:30							
Arrive At Loc	04/27/2012 22:30							RIG WAS PULLING DRILL PIPE UPON HES ARRIVAL
Assessment Of Location Safety Meeting	04/28/2012 01:30							WITH ALL HES PERSONNEL
Other	04/28/2012 01:40							SPOT EQUIPMENT
Pre-Rig Up Safety Meeting	04/28/2012 01:50							WITH ALL HES PERSONNEL
Rig-Up Equipment	04/28/2012 02:00							
Pre-Job Safety Meeting	04/28/2012 02:30							WITH ALL PERSONNEL ON LOCATION
Start Job	04/28/2012 02:44							TD 1170 FT, TP 1129 FT, SHOE 43.2 FT, HOLE 13 1/2 IN, MUD WT 10.2 PPG, CSG 9 5/8 IN 32.3 LB/FT H-40
Other	04/28/2012 02:45		2	2			45.0	FILL LINES WITH FRESH WATER
Test Lines	04/28/2012 02:47							TEST LINES TO 3200 PSI. PRESSURE HOLDING
Pump Spacer 1	04/28/2012 02:53		4	20			110.0	FRESH WATER
Pump Lead Cement	04/28/2012 03:01		8	69.9			360.0	165 SKS AT 12.3 PPG, 2.38 FT3/SK, 13.75 GAL/SK
Activity Description	Date/Time	Cht	Rate bbl/ min	Volume bbl		Pressure psig		Comments

Sold To #: 300721

Ship To #: 300721

Quote #:

Sales Order #:

9471994

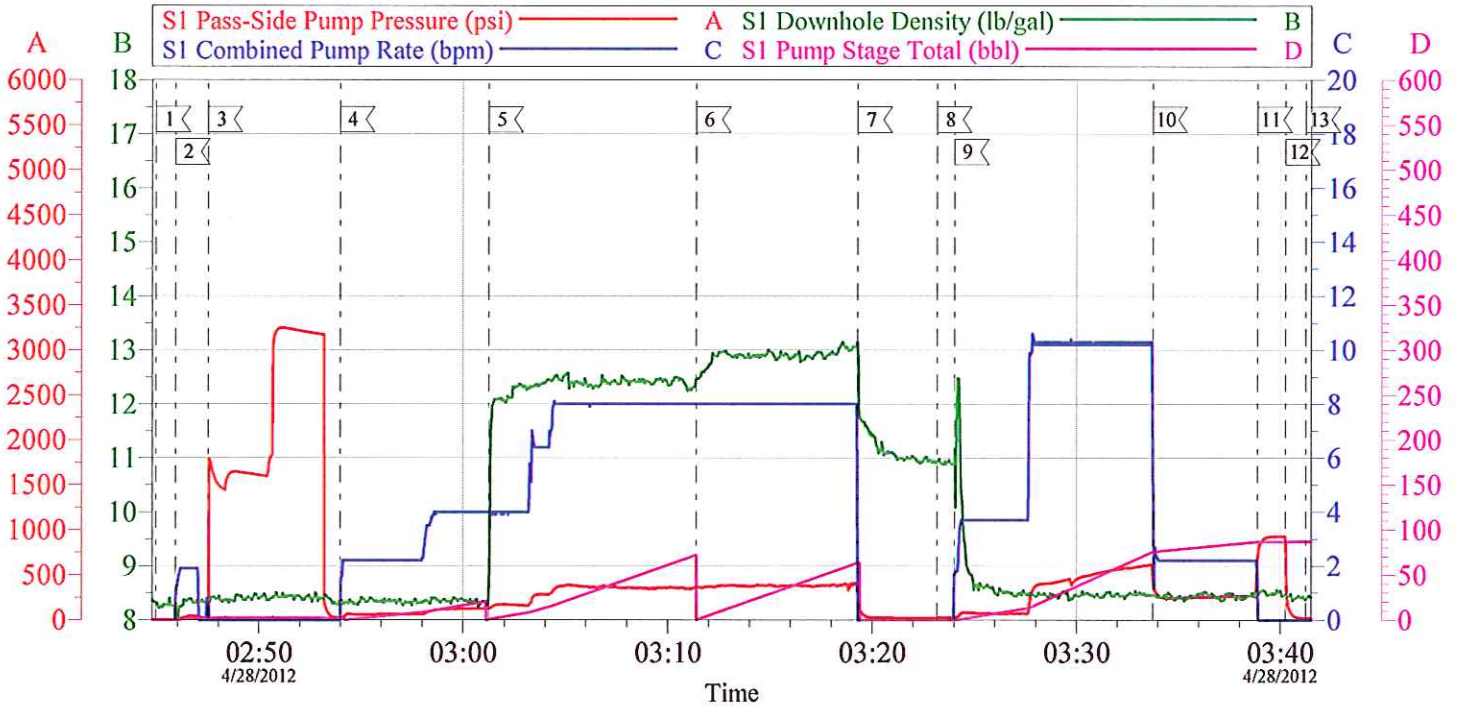
SUMMIT Version: 7.3.0021

Saturday, April 28, 2012 04:17:00

		#		Stage	Total	Tubing	Casing	
Pump Tail Cement	04/28/2012 03:11		8	60.1			380.0	160 SKS AT 12.8 PPG, 2.11 FT3/SK, 11.75 GAL/SK
Shutdown	04/28/2012 03:19							
Drop Top Plug	04/28/2012 03:23							PLUG LAUNCHED
Pump Displacement	04/28/2012 03:24		10	75.5			615.0	FRESH WATER
Slow Rate	04/28/2012 03:33		2	10			280.0	SLOW RATE 10 BBLS PRIOR TO CALCULATED DISPLACEMENT
Bump Plug	04/28/2012 03:38		2		85.5		920.0	PLUG BUMPED
Check Floats	04/28/2012 03:40							FLOATS HOLDING. RETURNED 0.5 BBL H2O TO PUMP
End Job	04/28/2012 03:41							PIPE WAS STATIC DURING JOB. GOOD CIRCULATION THROUGHOUT JOB. HES RETURNED 25 BBL CEMENT TO SURFACE
Pre-Rig Down Safety Meeting	04/28/2012 03:50							WITH ALL HES PERSONNEL
Rig-Down Equipment	04/28/2012 04:00							
Pre-Convoy Safety Meeting	04/28/2012 04:50							WITH ALL HES PERSONNEL
Crew Leave Location	04/28/2012 05:00							
Comment	04/28/2012 05:01							THANK YOU FOR USING HALLIBURTON CEMENT DEPARTMENT. JEREMY YOUNG AND CREW.

WPX - SG 323-27

9 5/8 SURFACE



Local Event Log

1 START JOB	02:44:56	2 FILL LINES	02:45:54	3 TEST LINES	02:47:30
4 PUMP H2O SPACER	02:53:59	5 PUMP LEAD CEMENT	03:01:15	6 PUMP TAIL CEMENT	03:11:23
7 SHUTDOWN	03:19:17	8 DROP TOP PLUG	03:23:10	9 PUMP DISPLACEMENT	03:24:01
10 SLOW RATE	03:33:44	11 BUMP PLUG	03:38:53	12 CHECK FLOATS	03:40:15
13 END JOB	03:41:15				

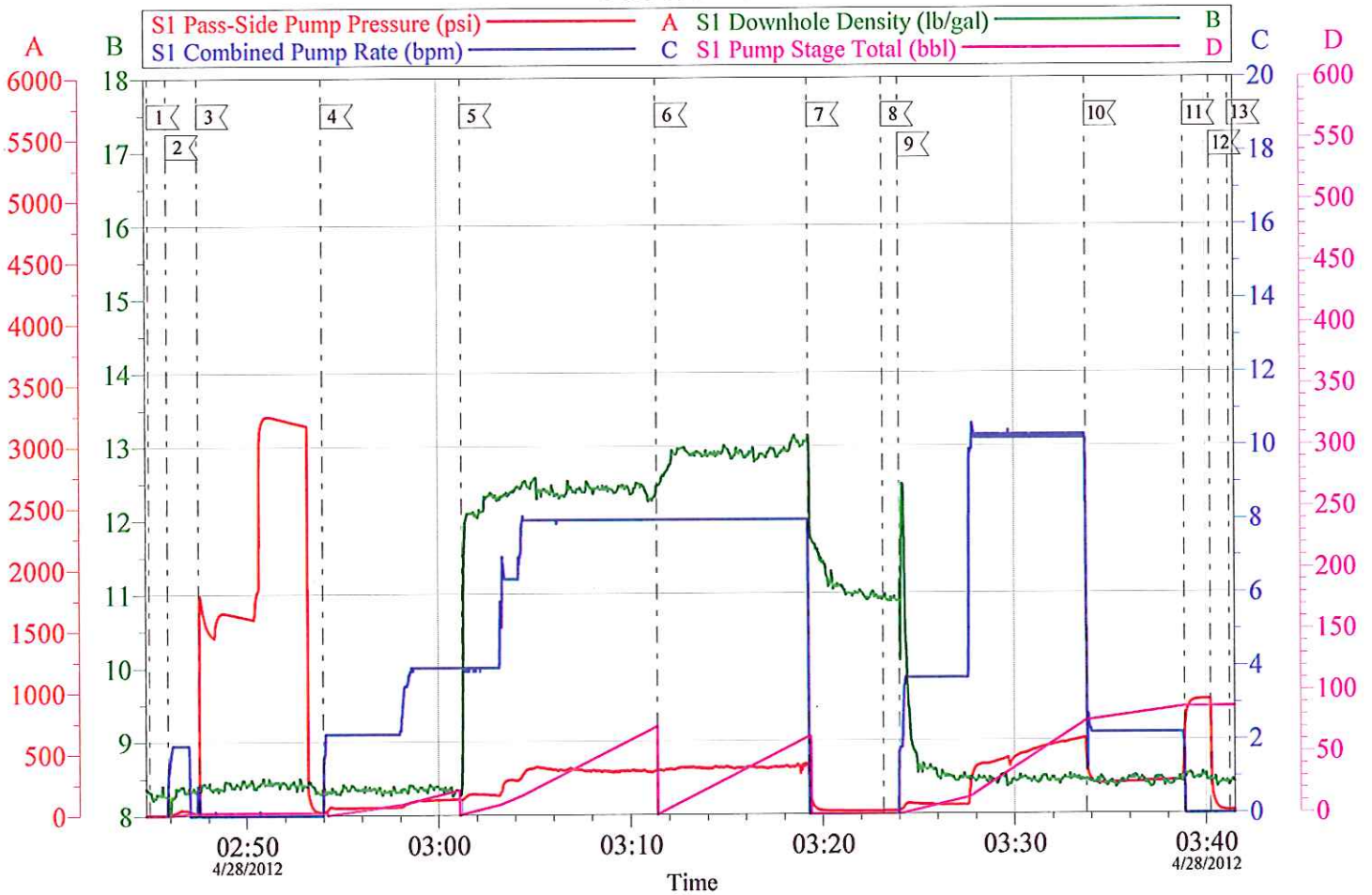
Customer: WPX
Well Description: SG 323-27
Company Rep: FRANK MOORE

Job Date: 28-Apr-2012
Job Type: SURFACE
Cement Supervisor: JEREMY YOUNG

Sales Order #: 9471994
ADC Used: YES
Elite #5: ANTHONY ANDREWS

OptiCem v6.4.10
28-Apr-12 03:50

WPX - SG 323-27 9 5/8 SURFACE



Customer: WPX	Job Date: 28-Apr-2012	Sales Order #: 9471994
Well Description: SG 323-27	Job Type: SURFACE	ADC Used: YES
Company Rep: FRANK MOORE	Cement Supervisor: JEREMY YOUNG	Elite #5: ANTHONY ANDREWS

OptiCem v6.4.10
28-Apr-12 03:51