

T10N, R57W, 6th P.M.

WHITTING OIL & GAS CORP.

2006, Priv. Alum. Cap.
0.6' Below Ground
Lot: 40.860678°
Long: 103.804117°
Target
Bottom Hole

2006, Priv. Alum. Cap.
0.9' Below Ground
Lot: 40.860736°
Long: 103.795017°

2006, Priv. Alum. Cap.
0.9' Below Ground
Lot: 40.860797°
Long: 103.785433°

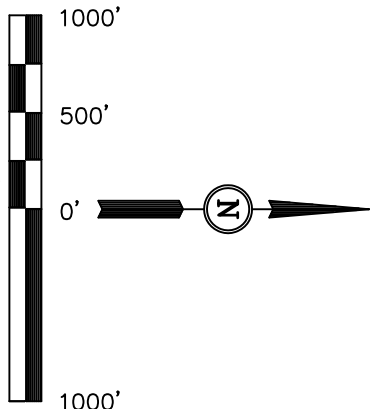
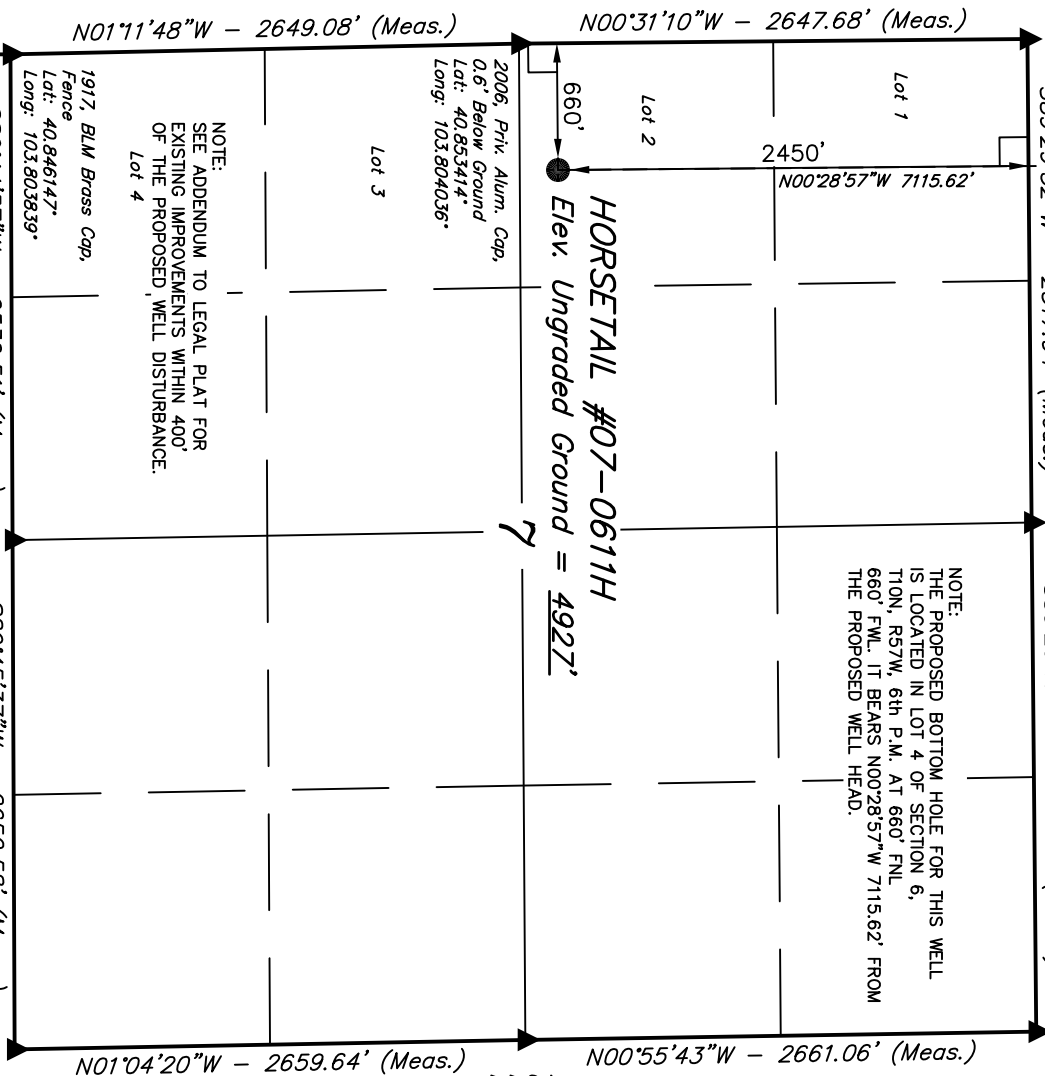
Well location, HORSETAIL #07-0611H, (SURFACE LOCATION), located as shown in LOT 2 of Section 7, T10N, R57W, 6th P.M., Weld County, Colorado.

BASIS OF ELEVATION

SPOT ELEVATION LOCATED AT THE NORTHEAST CORNER OF SECTION 15, T9N, R58W, 6th P.M. TAKEN FROM THE GATEHOOK SPRING, QUADRANGLE, COLORADO, WELD COUNTY, 7.5 MINUTE QUAD (TOPOGRAPHIC MAP) PUBLISHED BY THE UNITED STATES DEPARTMENT OF THE INTERIOR, GEOLOGICAL SURVEY. SAID ELEVATION IS MARKED AS BEING 4679 FEET.

BASIS OF BEARINGS

BASIS OF BEARINGS IS A G.P.S. OBSERVATION.



CERTIFICATE

THIS IS TO CERTIFY THAT THE ABOVE PLAT WAS PREPARED FROM FIELD NOTES OF ACTUAL SURVEYS MADE BY ME OR UNDER MY SUPERVISION AND THAT THE SAME ARE TRUE AND CORRECT TO THE BEST OF MY KNOWLEDGE AND BELIEF.

REGISTERED LAND SURVEYOR
REGISTRATION NO. 17492
STATE OF COLORADO
06-06-12

LEGEND:

- 90° SYMBOL
- PROPOSED WELL HEAD.
- SECTION CORNERS LOCATED.

PDOP = 1.4

NAD 83 (SURFACE LOCATION)	
LATITUDE =	40°51'14.30" (40.853972)
LONGITUDE =	103°48'05.96" (103.801656)
NAD 27 (SURFACE LOCATION)	
LATITUDE =	40°51'14.35" (40.853986)
LONGITUDE =	103°48'04.15" (103.801153)

UNTAH ENGINEERING & LAND SURVEYING	
85 SOUTH 200 EAST - VERNAL, UTAH 84078	
(435) 789-1017	
SCALE	DATE SURVEYED: DATE DRAWN:
1" = 1000'	05-17-12 05-30-12
PARTY	REFERENCES
Z.B. A.G. W.M.	G.L.O. PLAT
WEATHER	FILE
WARM	WHITTING OIL & GAS CORP.

T10N, R57W, 6th P.M.

WHITTING OIL & GAS CORP.

R 1917 Brass Cap, 0.5' High
58 Lot: 40.875286°
57 Long: 103.804261°
W N89°19'53"E - 2550.29' (Meas.)
W N89°19'53"E - 2550.29' (Meas.)
T11N
T10N

Well location, HORSETAIL #07-0611H, (TARGET BOTTOM HOLE), located as shown in LOT 4 of Section 6, T10N, R57W, 6th P.M., Weld County, Colorado.

BASIS OF ELEVATION

SPOT ELEVATION LOCATED AT THE NORTHEAST CORNER OF SECTION 15, 19N, R58W, 6th P.M. TAKEN FROM THE GATEHOOK SPRING, QUADRANGLE, COLORADO, WELD COUNTY, 7.5 MINUTE QUAD (TOPOGRAPHIC MAP) PUBLISHED BY THE UNITED STATES DEPARTMENT OF THE INTERIOR, GEOLOGICAL SURVEY. SAID ELEVATION IS MARKED AS BEING 4679 FEET.

BASIS OF BEARINGS

BASIS OF BEARINGS IS A G.P.S. OBSERVATION.

N00°23'04"W - 2661.63' (Meas.)
N00°31'18"W - 2662.07' (Meas.)
N00°28'57"W - 7115.62'
S00°13'16"W - 2658.78' (Meas.)
S00°18'29"W - 2675.90' (Meas.)
N00°23'04"W - 2661.63' (Meas.)
N00°31'18"W - 2662.07' (Meas.)
N00°28'57"W - 7115.62'
S00°13'16"W - 2658.78' (Meas.)
S00°18'29"W - 2675.90' (Meas.)

2006, Priv. Alum. Cap, Flush W/Ground, PLS 24949
Lot: 40.867983°
Long: 103.804203°
1917 Brass Cap, 0.6' High
Lot: 40.868094°
Long: 103.785392°

NOTE:
THE PROPOSED BOTTOM HOLE BEARS N00°28'57"W 7115.62' FROM THE PROPOSED WELL HEAD WHICH IS LOCATED IN LOT 2 OF SECTION 7, T10N, R57W, 6th P.M. AT 2450' FNL 660' FWL.

HORSETAIL #07-0611H
TARGET BOTTOM HOLE

Lot 7

Lot 6

Lot 5

Lot 4

Lot 3

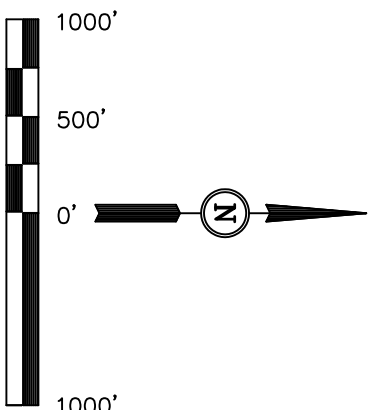
Lot 2

Lot 1

S89°29'32"W - 2517.94' (Meas.)
S89°29'19"W - 2651.74' (Meas.)
2006, Priv. Alum. Cap, 0.6' Below Ground
Lot: 40.860678°
Long: 103.804117°
2006, Priv. Alum. Cap, 0.9' Below Ground
Lot: 40.860736°
Long: 103.795017°
2006, Priv. Alum. Cap, 0.9' Below Ground
Lot: 40.860797°
Long: 103.785433°

LEGEND:
= 90° SYMBOL
= PROPOSED WELL HEAD.
= SECTION CORNERS LOCATED.

Surface Location



CERTIFICATE

THIS IS TO CERTIFY THAT THE ABOVE PLAT WAS PREPARED FROM FIELD NOTES OF ACTUAL SURVEYS MADE BY ME OR UNDER MY SUPERVISION AND THAT THE SAME ARE TRUE AND CORRECT TO THE BEST OF MY KNOWLEDGE AND BELIEF.

REGISTERED LAND SURVEYOR
REGISTRATION NO. 12492
STATE OF COLORADO
06-06-12

UINTAH ENGINEERING & LAND SURVEYING
85 SOUTH 200 EAST - VERNAL, UTAH 84078
(435) 789-1017

SCALE 1" = 1000'	DATE SURVEYED: 05-17-12	DATE DRAWN: 05-30-12
PARTY Z.B. A.G. W.M.	REFERENCES G.L.O. PLAT	
WEATHER WARM	FILE WHITTING OIL & GAS CORP.	