

MULTI-WELL PLAN

T9N, R59W, 6th P.M.

TARGET BOTTOM HOLE
TIMBRO LC13-77-1HN
SEC. 13, T9N, R59W
LAT: 40.756475°
LONG: 103.929922°
660' FNL 1650' FWL

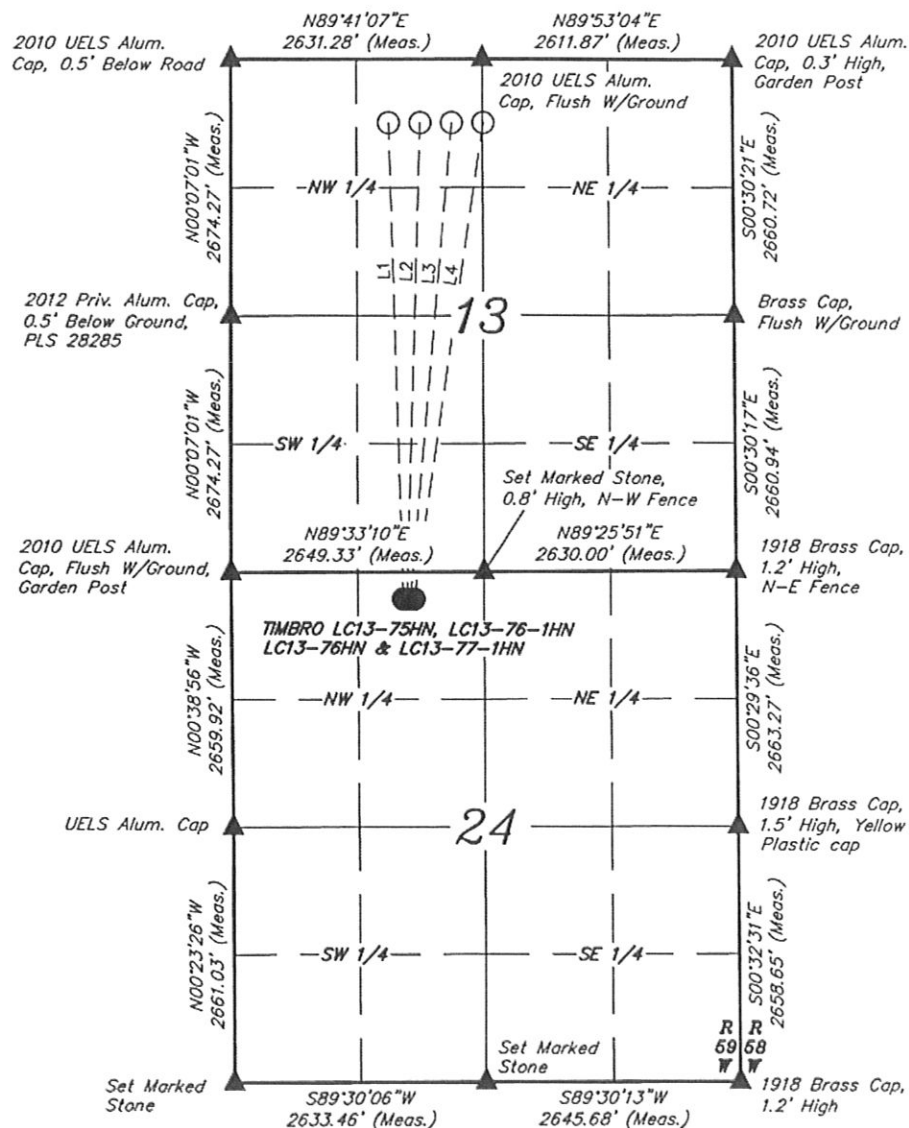
TARGET BOTTOM HOLE
TIMBRO LC13-76HN
SEC. 13, T9N, R59W
LAT: 40.756483°
LONG: 103.928731°
660' FNL 1980' FWL

TARGET BOTTOM HOLE
TIMBRO LC13-76-1HN
SEC. 13, T9N, R59W
LAT: 40.756489°
LONG: 103.927542°
660' FNL 2310' FWL

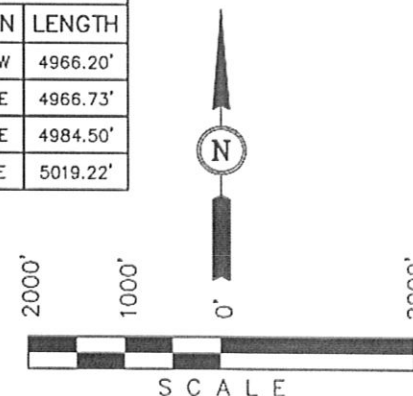
TARGET BOTTOM HOLE
TIMBRO LC13-75HN
SEC. 13, T9N, R59W
LAT: 40.756494°
LONG: 103.926350°
660' FNL 2640' FWL

NOBLE ENERGY, INC.

Well location, TIMBRO LC13-75HN, LC13-76-1HN, LC13-76HN & LC13-77-1HN located as shown in the NE 1/4 NW 1/4 of Section 24, T9N, R59W, 6th P.M., Weld County, Colorado.



LINE TABLE		
LINE	DIRECTION	LENGTH
L1	N01°52'40"W	4966.20'
L2	N01°29'49"E	4966.73'
L3	N04°51'34"E	4984.50'
L4	N08°11'12"E	5019.22'



LEGEND:

- ▲ = SECTION CORNERS LOCATED.
- = PROPOSED WELL HEAD.
- = TARGET BOTTOM HOLE.

UINTAH ENGINEERING & LAND SURVEYING
85 SOUTH 200 EAST - VERNAL, UTAH 84078
(435) 789-1017

SCALE 1" = 2000'	DATE SURVEYED: 09-03-12	DATE DRAWN: 10-05-12
PARTY ZANE BULLARD A.G. J.M.H.	REFERENCES G.L.O. PLAT	
WEATHER WARM	FILE NOBLE ENERGY, INC.	

NOBLE ENERGY, INC.

MULTI-WELL PLAN

DATE: 10-05-12
DRAWN BY: J.M.H.

TIMBRO LC13-77-1HN, LC13-76HN,
LC13-76-1HN & LC13-75HN
SECTION 24, T9N, R59W, 6th P.M.

