

# WELL LOCATION PLAT T9N, R59W, 6th P.M.

2010 UELS Alum.  
Cap, Flush W/Ground,  
Garden Post

N89°33'10"E  
2649.33' (Meas.)

N01°29'49"E  
4966.73'

Target Bottom Hole

Set Marked Stone,  
0.8' High, N-W Fence

1918 Brass Cap,  
1.2' High,  
N-E Fence

N89°25'51"E - 2630.00' (Meas.)

PROPERTY  
LINE

**TIMBRO LC13-76HN**  
Elev. Ungraded Ground = 4860'

500°29'36"E - 2663.27' (Meas.)

1918 Brass Cap,  
1.5' High, Yellow  
Plastic cap

500°32'31"E - 2658.65' (Meas.)

1918 Brass Cap,  
1.2' High

Set Marked Stone

S89°30'06"W - 2633.46' (Meas.)

S89°30'13"W - 2645.68' (Meas.)

## FEATURE TABLE

EXISTING FEATURE	DIRECTION	LENGTH
PROPERTY LINE	NORTH	280'

R  
59  
W

PDOP = 1.4

NAD 83 (SURFACE LOCATION)  
LATITUDE = 40°44'34.29" (40.742858)  
LONGITUDE = 103°55'45.05" (103.929181)

## NOBLE ENERGY, INC.

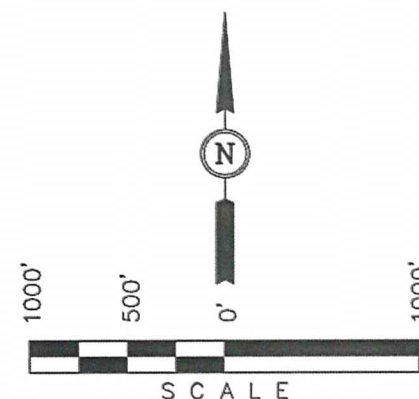
Well location, TIMBRO LC13-76HN (SURFACE LOCATION), located as shown in the NE 1/4 NW 1/4 of Section 24, T9N, R59W, 6th P.M., Weld County, Colorado.

## BASIS OF ELEVATION

SPOT ELEVATION LOCATED AT THE NORTHEAST CORNER OF SECTION 15, T9N, R58W, 6th P.M. TAKEN FROM THE GATEHOOK SPRING, QUADRANGLE, COLORADO, WELD COUNTY, 7.5 MINUTE QUAD (TOPOGRAPHIC MAP) PUBLISHED BY THE UNITED STATES DEPARTMENT OF THE INTERIOR, GEOLOGICAL SURVEY. SAID ELEVATION IS MARKED AS BEING 4679 FEET.

## BASIS OF BEARINGS

BASIS OF BEARINGS IS A G.P.S. OBSERVATION.



## CERTIFICATE

THIS IS TO CERTIFY THAT THE ABOVE PLAT WAS PREPARED FROM FIELD NOTES OF ACTUAL SURVEYS MADE BY ME OR UNDER MY SUPERVISION AND THAT THE SAME ARE TRUE AND CORRECT TO THE BEST OF MY KNOWLEDGE AND BELIEF.

REGISTERED LAND SURVEYOR  
REGISTRATION NO. 17492  
STATE OF COLORADO  
09-09-12

## UINTAH ENGINEERING & LAND SURVEYING

85 SOUTH 200 EAST - VERNAL, UTAH 84078

(435) 789-1017

SCALE 1" = 1000'	DATE SURVEYED: 09-03-12	DATE DRAWN: 10-04-12
PARTY ZANE BULLARD A.G. J.M.H.	REFERENCES G.L.O. PLAT	
WEATHER WARM	FILE NOBLE ENERGY, INC.	

## LEGEND:

└─┘ = 90° SYMBOL

● = PROPOSED WELL HEAD.

▲ = SECTION CORNERS LOCATED.

# WELL LOCATION PLAT T9N, R59W, 6th P.M.

NOBLE ENERGY, INC.

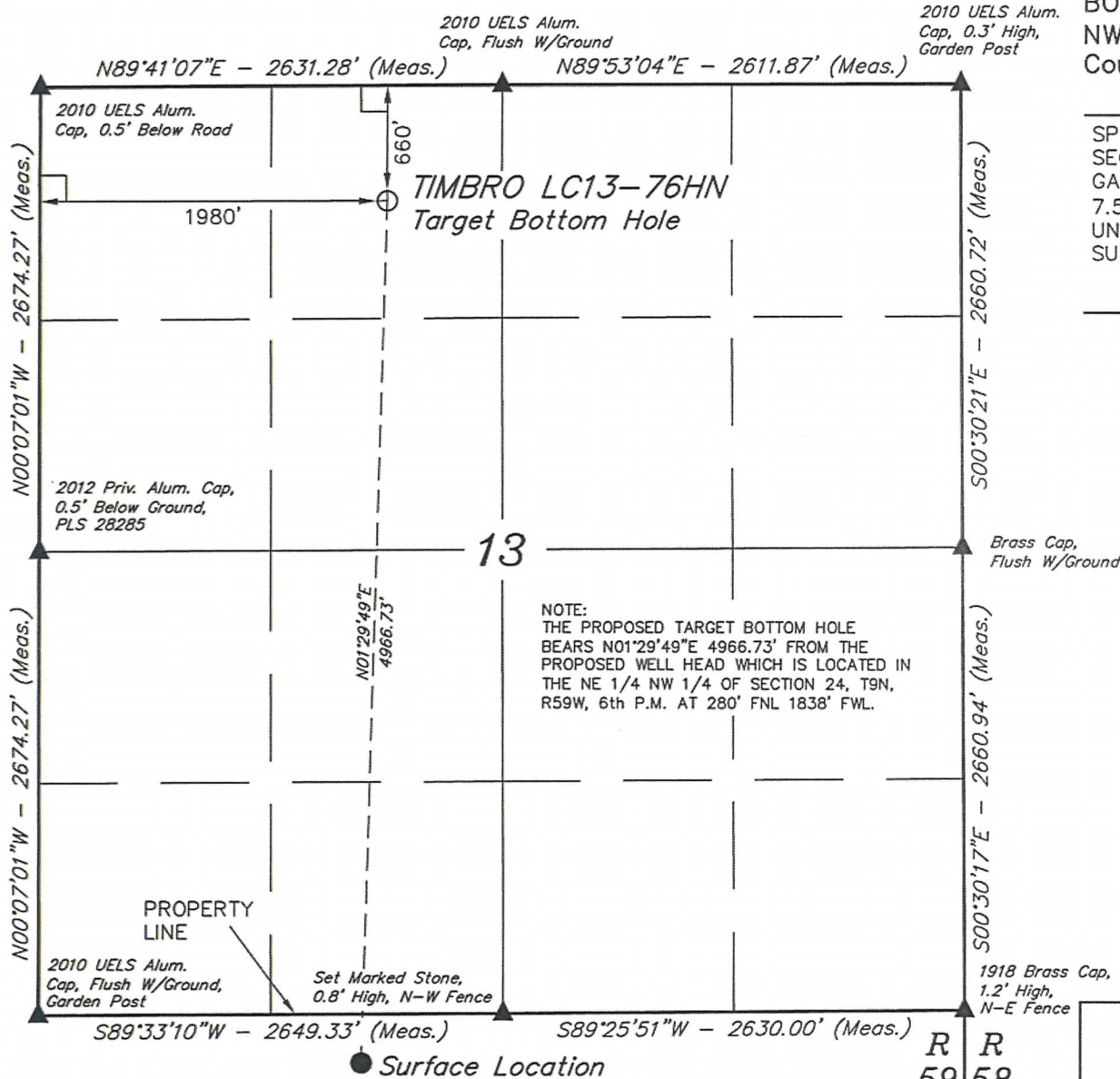
Well location, TIMBRO LC13-76HN (TARGET BOTTOM HOLE), located as shown in the NE 1/4 NW 1/4 of Section 13, T9N, R59W, 6th P.M., Weld County, Colorado.

## BASIS OF ELEVATION

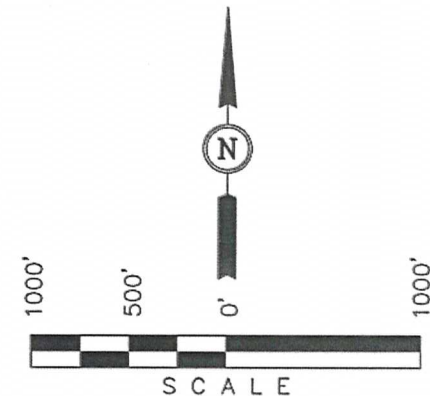
SPOT ELEVATION LOCATED AT THE NORTHEAST CORNER OF SECTION 15, T9N, R58W, 6th P.M. TAKEN FROM THE GATEHOOK SPRING, QUADRANGLE, COLORADO, WELD COUNTY, 7.5 MINUTE QUAD (TOPOGRAPHIC MAP) PUBLISHED BY THE UNITED STATES DEPARTMENT OF THE INTERIOR, GEOLOGICAL SURVEY. SAID ELEVATION IS MARKED AS BEING 4679 FEET.

## BASIS OF BEARINGS

BASIS OF BEARINGS IS A G.P.S. OBSERVATION.



NOTE:  
THE PROPOSED TARGET BOTTOM HOLE  
BEARS N01°29'49\"E 4966.73' FROM THE  
PROPOSED WELL HEAD WHICH IS LOCATED IN  
THE NE 1/4 NW 1/4 OF SECTION 24, T9N,  
R59W, 6th P.M. AT 280' FNL 1838' FWL.



## CERTIFICATE

THIS IS TO CERTIFY THAT THE ABOVE PLAT WAS PREPARED FROM FIELD NOTES OF ACTUAL SURVEYS MADE BY ME OR UNDER MY SUPERVISION AND THAT THE SAME ARE TRUE AND CORRECT TO THE BEST OF MY KNOWLEDGE AND BELIEF.

REGISTERED LAND SURVEYOR  
REGISTRATION NO. 17492  
STATE OF COLORADO  
09-09-12

## LEGEND:

- = 90° SYMBOL
- = PROPOSED WELL HEAD.
- = SECTION CORNERS LOCATED.

## FEATURE TABLE

EXISTING FEATURE	DIRECTION	LENGTH
PROPERTY LINE	NORTH	280'

## NAD 83 (TARGET BOTTOM HOLE)

LATITUDE = 40°45'23.34" (40.756483)  
LONGITUDE = 103°55'43.43" (103.928731)

SHEET 2 OF 2

UINTAH ENGINEERING & LAND SURVEYING  
85 SOUTH 200 EAST - VERNAL, UTAH 84078  
(435) 789-1017

SCALE 1" = 1000'	DATE SURVEYED: 09-03-12	DATE DRAWN: 10-04-12
PARTY ZANE BULLARD A.G. J.M.H.	REFERENCES G.L.O. PLAT	
WEATHER WARM	FILE NOBLE ENERGY, INC.	



# SITE SKETCH T9N, R59W, 6th P.M.

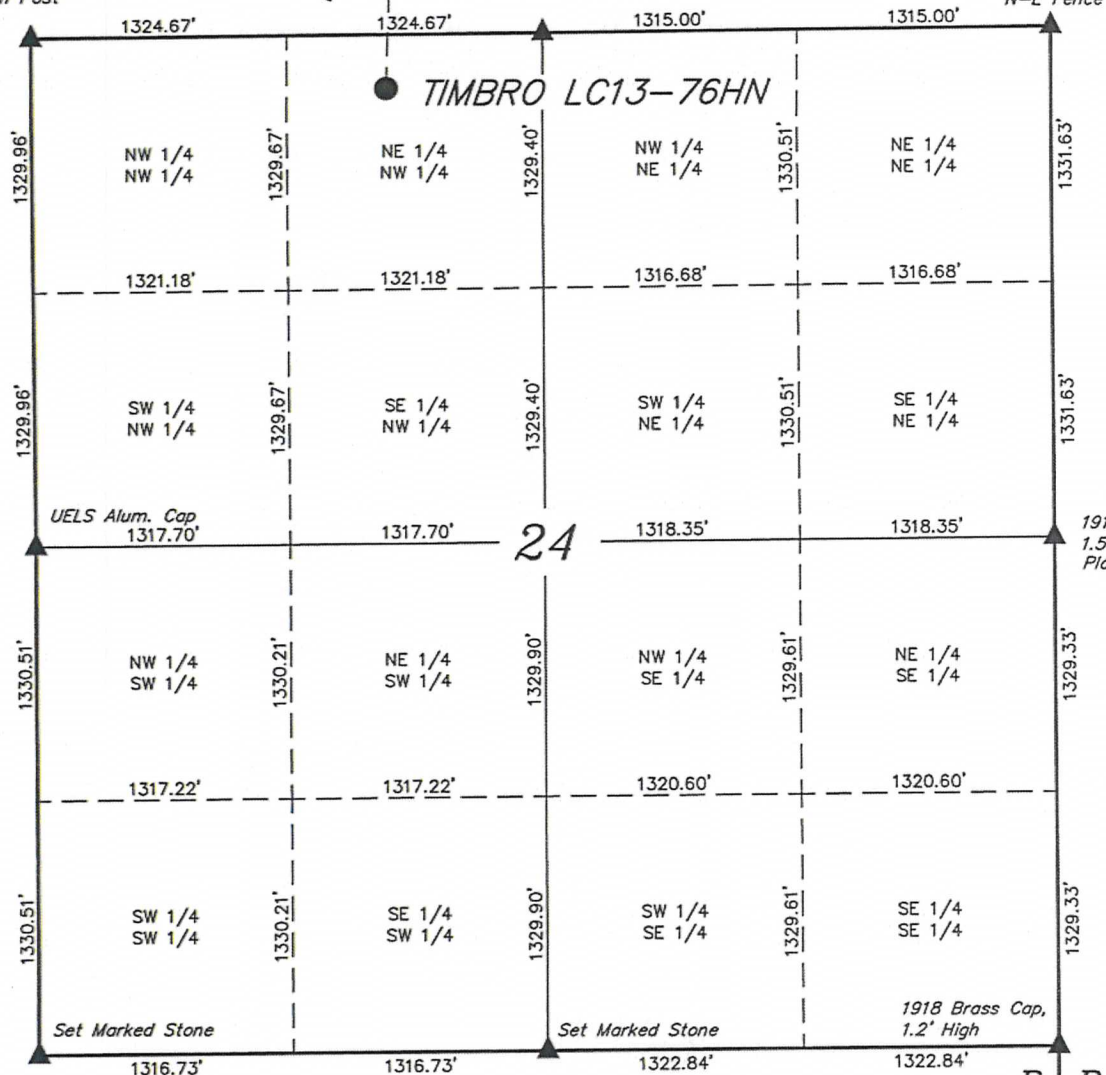
2010 UELS Alum.  
Cap, Flush W/Ground,  
Garden Post

N01°29'49"E  
4966.73'

Target Bottom Hole

Set Marked Stone,  
0.8' High, N-W Fence

1918 Brass Cap,  
1.2' High,  
N-E Fence

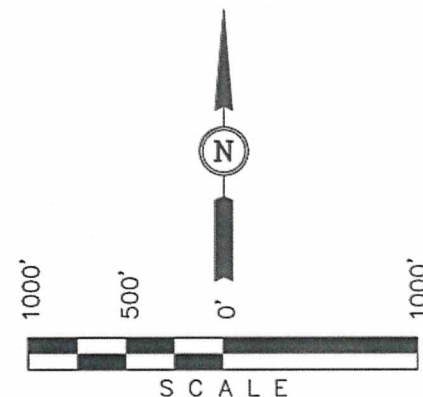


NO WELLS WITHIN SECTION

SHEET 1 OF 2

NOBLE ENERGY, INC.

Well location, TIMBRO LC13-76HN (SURFACE LOCATION), located as shown in the NE 1/4 NW 1/4 of Section 24, T9N, R59W, 6th P.M., Weld County, Colorado.



NOTE:  
THE PROPOSED TARGET BOTTOM HOLE FOR  
THIS WELL IS LOCATED IN THE NE 1/4 NW  
1/4 OF SECTION 13, T9N, R59W, 6th P.M.  
AT 660' FNL 1980' FWL. IT BEARS  
N01°29'49"E 4966.73' FROM THE PROPOSED  
WELL HEAD.

## LEGEND:

- ▲ = SECTION CORNERS LOCATED.
- = PROPOSED WELL HEAD.
- = TARGET BOTTOM HOLE.

UINTAH ENGINEERING & LAND SURVEYING  
85 SOUTH 200 EAST - VERNAL, UTAH 84078  
(435) 789-1017

SCALE 1" = 1000'	DATE SURVEYED: 09-03-12	DATE DRAWN: 10-04-12
PARTY ZANE BULLARD A.G. J.M.H.	REFERENCES G.L.O. PLAT	
WEATHER WARM	FILE NOBLE ENERGY, INC.	

SCALE 1" = 1000'	DATE SURVEYED: 09-03-12	DATE DRAWN: 10-04-12
PARTY ZANE BULLARD A.G. J.M.H.	REFERENCES G.L.O. PLAT	
WEATHER WARM	FILE NOBLE ENERGY, INC.	