

HALLIBURTON

WPX ENERGY ROCKY MOUNTAIN LLC-EBUS

**SG 433-27
S. GRAND VALLEY
Garfield County , Colorado**

Cement Surface Casing
24-Apr-2012

Post Job Report

The Road to Excellence Starts with Safety

Sold To #: 300721	Ship To #: 2922335	Quote #:	Sales Order #: 9438772
Customer: WPX ENERGY ROCKY MOUNTAIN LLC-EBUS	Customer Rep: Moore, Frank		
Well Name: SG	Well #: 433-27	API/UWI #:	
Field: S. GRAND VALLEY	City (SAP): PARACHUTE	County/Parish: Garfield	State: Colorado
Legal Description:			
Lat: N 0 deg. OR N 0 deg. 0 min. 0 secs.		Long: E 0 deg. OR E 0 deg. 0 min. 0 secs.	
Contractor: NABORS 573	Rig/Platform Name/Num: NABORS 573		
Job Purpose: Cement Surface Casing	Ticket Amount:		
Well Type: Development Well	Job Type: Cement Surface Casing		
Sales Person: MAYO, MARK	Srvc Supervisor: REEVES, BRANDON	MBU ID Emp #:	287883

Activity Description	Date/Time	Cht #	Rate bbl/min	Volume bbl		Pressure psig		Comments
				Stage	Total	Tubing	Casing	
Call Out	04/24/2012 01:15							
Pre-Convoy Safety Meeting	04/24/2012 04:20							
Arrive at Location from Service Center	04/24/2012 05:30							
Assessment Of Location Safety Meeting	04/24/2012 05:50							
Other	04/24/2012 06:05							SPOT EQUIPMENT
Pre-Rig Up Safety Meeting	04/24/2012 06:15							
Rig-Up Equipment	04/24/2012 06:30							
Pre-Job Safety Meeting	04/24/2012 07:00							
Start Job	04/24/2012 07:23							TD-1310' TP-1304' SJ-44.35' MW-10.0# HOLE-13 1/2" CASING-9 5/8" 32.3#
Test Lines	04/24/2012 07:25						3505.0	
Pump Spacer 1	04/24/2012 07:29		4	20			105.0	FRESH WATER SPACER
Pump Lead Cement	04/24/2012 07:34		8	80.5			350.0	190 SKS. @ 12.3# 2.38 YIELD 13.75 WRQ.
Pump Tail Cement	04/24/2012 07:45		8	60.1			330.0	160 SKS. @ 12.8# 2.11 YIELD 11.75 WRQ.
Drop Top Plug	04/24/2012 07:55							
Pump Displacement	04/24/2012 07:57		10				550.0	FRESH WATER DISPLACEMENT
Slow Rate	04/24/2012 08:08		2	89			250.0	
Activity Description	Date/Time	Cht	Rate bbl/min	Volume bbl		Pressure psig		Comments

Sold To #: 300721

Ship To #: 2922335

Quote #:

Sales Order #:

9438772

SUMMIT Version: 7.3.0021

Tuesday, December 18, 2012 09:51:00

Cementing Job Log

		#		Stage	Total	Tubing	Casing	
Bump Plug	04/24/2012 08:11		2	97			830.0	PLUG LANDED AT 270 PSI. PRESSURED UP TO 830 PSI.
Check Floats	04/24/2012 08:13							FLOATS HELD
End Job	04/24/2012 08:16							WELL WAS CIRCULATED BEFORE STARTING THE JOB. GOOD CIRCULATION THROUGHOUT THE JOB. PIPE WAS NOT RECIPROCATED. CIRCULATED 20 BBLS. OF CEMENT TO SURFACE.
Rig-Down Equipment	04/24/2012 08:30							THANKS FOR USING HALLIBURTON. BRANDON REEVES AND CREW.

Sold To #: 300721	Ship To #: 2922335	Quote #:	Sales Order #: 9438772
Customer: WPX ENERGY ROCKY MOUNTAIN LLC-EBUS		Customer Rep: Moore, Frank	
Well Name: SG	Well #: 433-27	API/UWI #:	
Field: S. GRAND VALLEY	City (SAP): PARACHUTE	County/Parish: Garfield	State: Colorado
Contractor: NABORS 573	Rig/Platform Name/Num: NABORS 573		
Job Purpose: Cement Surface Casing			
Well Type: Development Well	Job Type: Cement Surface Casing		
Sales Person: MAYO, MARK	Srvs Supervisor: REEVES, BRANDON	MBU ID Emp #: 287883	

HES Emp Name	Exp Hrs	Emp #	HES Emp Name	Exp Hrs	Emp #	HES Emp Name	Exp Hrs	Emp #
JAMISON, PRICE W	3.0	229155	REEVES, BRANDON W	3.0	287883	SALAZAR, PAUL Omar	3.0	445614
VANALSTYNE, TROY	3.0	420256						

HES Unit #	Distance-1 way	HES Unit #	Distance-1 way	HES Unit #	Distance-1 way	HES Unit #	Distance-1 way
10616651C	120 mile	10783493	120 mile	10822007	120 mile	10867094	120 mile
10897925	120 mile	11583931	120 mile	11808827	120 mile		

505 Hours								
Date	On Location Hours	Operating Hours	Date	On Location Hours	Operating Hours	Date	On Location Hours	Operating Hours
04/24/2012	3	2						
TOTAL					Total is the sum of each column separately			

Formation Name					Date		Time	Time Zone
Formation Depth (MD)	Top		Bottom		Called Out	24 - Apr - 2012	01:15	MST
Form Type		BHST			On Location	24 - Apr - 2012	05:30	MST
Job depth MD	1304. ft	Job Depth TVD	1304. ft		Job Started	24 - Apr - 2012	07:23	MST
Water Depth		Wk Ht Above Floor	4. ft		Job Completed	24 - Apr - 2012	08:16	GMT
Perforation Depth (MD)	From		To		Departed Loc	24 - Apr - 2012	00:00	MST

Description	New / Used	Max pressure psig	Size in	ID in	Weight lbm/ft	Thread	Grade	Top MD ft	Bottom MD ft	Top TVD ft	Bottom TVD ft
-------------	------------	----------------------	------------	----------	------------------	--------	-------	--------------	--------------------	------------------	---------------------

Tools and Accessories													
Type	Size	Qty	Make	Depth	Type	Size	Qty	Make	Depth	Type	Size	Qty	Make
Guide Shoe					Packer					Top Plug	9.625"	1	
Float Shoe					Bridge Plug					Bottom Plug			
Float Collar					Retainer					SSR plug set			
Insert Float										Plug Container	9.625"	1	
Stage Tool										Centralizers			

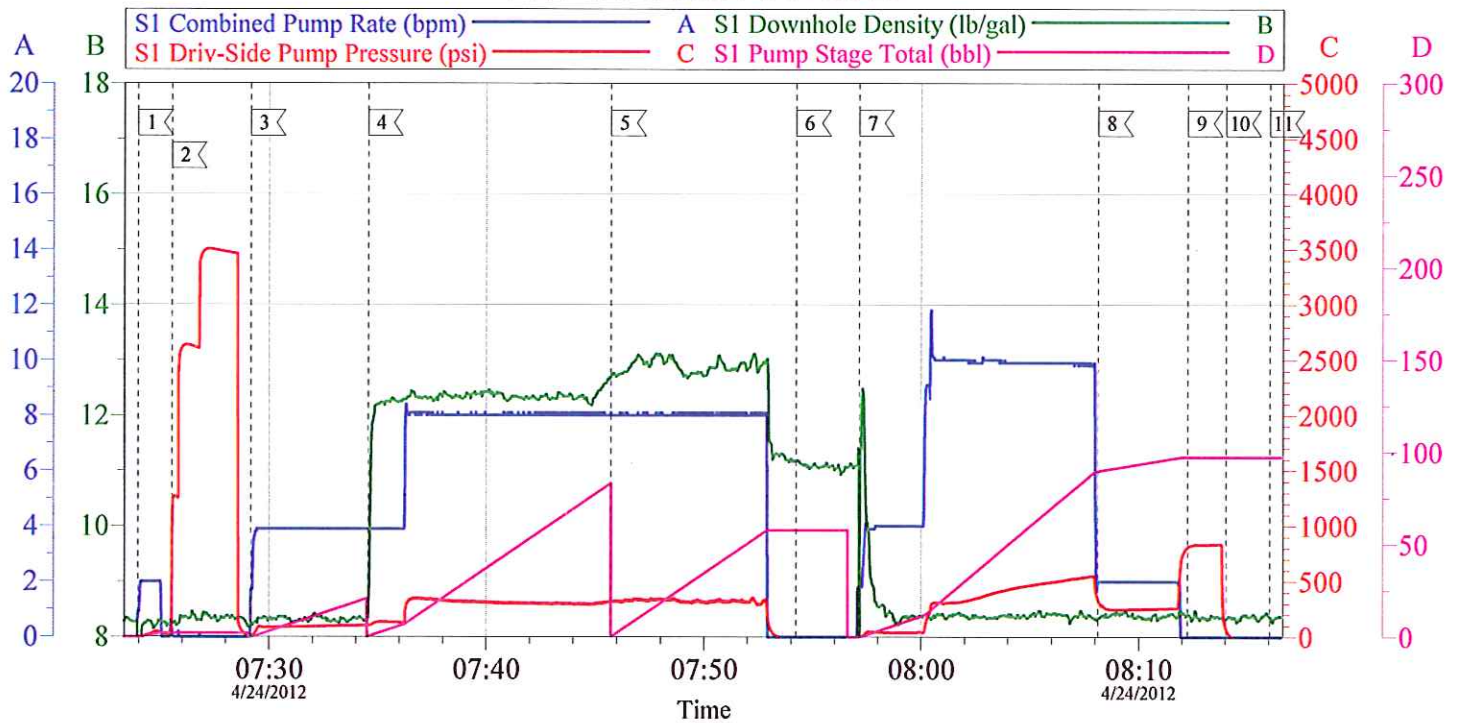
Gelling Agt	Conc	Surfactant	Conc	Acid Type	Qty	Conc	%
Treatment Fld	Conc	Inhibitor	Conc	Sand Type	Size	Qty	

Stage/Plug #: 1									
Fluid #	Stage Type	Fluid Name	Qty	Qty uom	Mixing Density lbm/gal	Yield ft3/sk	Mix Fluid Gal/sk	Rate bbl/min	Total Mix Fluid Gal/sk

Fluid #	Stage Type	Fluid Name	Qty	Qty uom	Mixing Density uom	Yield uom	Mix Fluid uom	Rate uom	Total Mix Fluid uom

Stage/Plug #: 1									
Fluid #	Stage Type	Fluid Name	Qty	Qty uom	Mixing Density lbm/gal	Yield ft ³ /sk	Mix Fluid Gal/sk	Rate bbl/min	Total Mix Fluid Gal/sk
1	Fresh Water Spacer		20.00	bbl	8.33	.0	.0	.0	
2	VersaCem Lead Cement	VERSACEM (TM) SYSTEM (452010)	190.0	sacks	12.3	2.38	13.75		13.75
	13.75 Gal	FRESH WATER							
3	VersaCem Tail Cement	VERSACEM (TM) SYSTEM (452010)	160.0	sacks	12.8	2.11	11.75		11.75
	11.75 Gal	FRESH WATER							
4	Fresh Water Displacement		97.00	bbl	8.33	.0	.0	.0	
Calculated Values		Pressures		Volumes					
Displacement	99.1	Shut In: Instant		Lost Returns	NO	Cement Slurry	140.6	Pad	
Top Of Cement	SURFACE	5 Min		Cement Returns	20	Actual Displacement	97	Treatment	
Frac Gradient		15 Min		Spacers	20	Load and Breakdown		Total Job	
Rates									
Circulating		Mixing	8	Displacement	10	Avg. Job	9		
Cement Left In Pipe	Amount	44.35 ft	Reason	Shoe Joint					
Frac Ring # 1 @	ID	Frac ring # 2 @	ID	Frac Ring # 3 @	ID	Frac Ring # 4 @	ID		
The Information Stated Herein Is Correct				Customer Representative Signature					

WPX
9 5/8" SURFACE SG 433-27



Local Event Log			
Intersection		SDPP	Intersection
1< START JOB	07:23:57	-7.000	2< TEST LINES
4< PUMP LEAD CEMENT	07:34:33	104.0	5< PUMP TAIL CEMENT
7< PUMP DISPLACEMENT	07:57:07	-0.636	8< SLOW RATE
10< CHECK FLOATS	08:14:02	76.08	11< END JOB
			3< PUMP H2O SPACER
			6< DROP TOP PLUG
			9< LAND PLUG

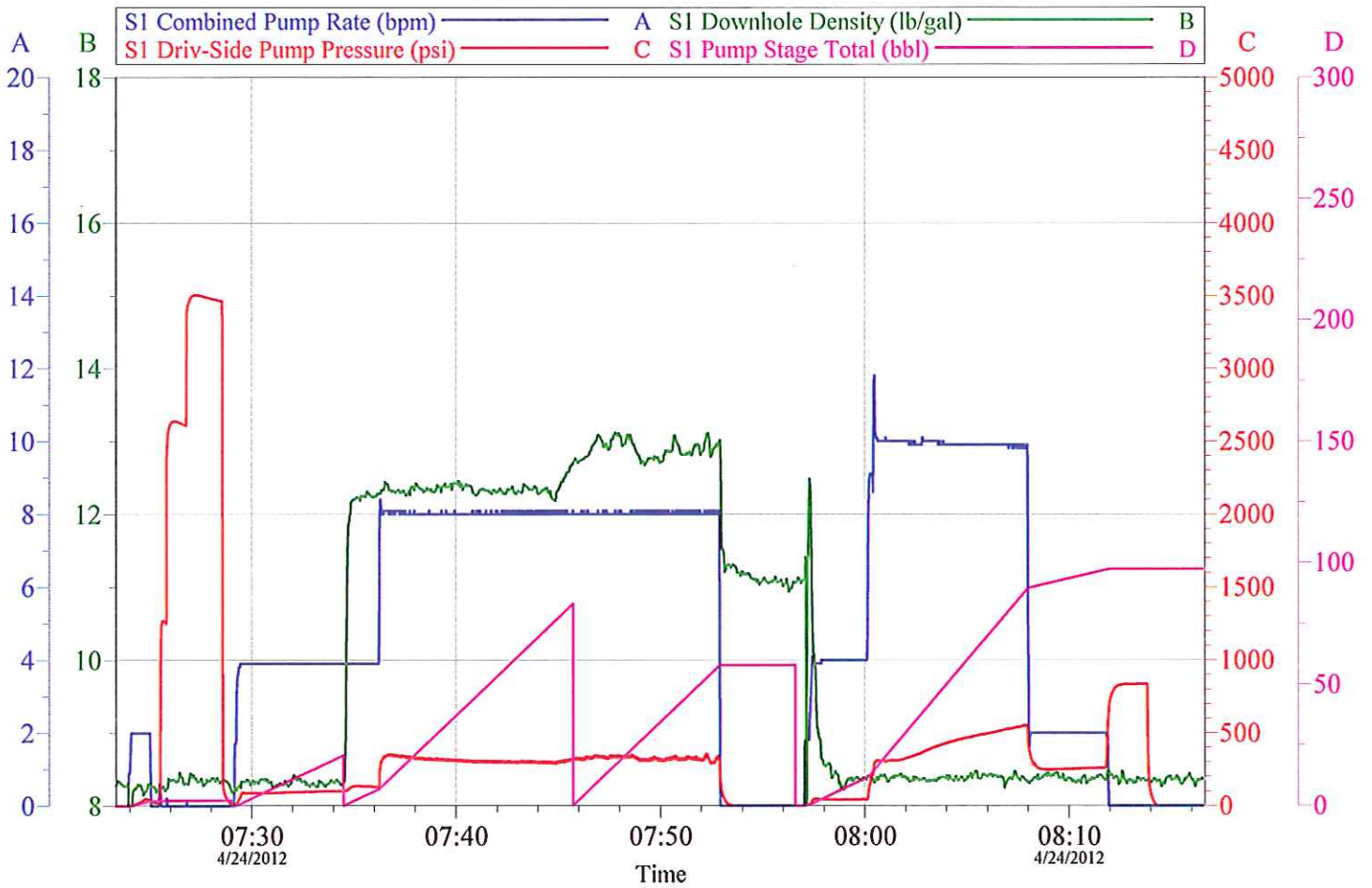
Customer: WPX
 Well Description: SG 433-27
 Supervisor: BRANDON REEVES

Job Date: 24-Apr-2012
 Job Type: SURFACE
 Company Rep: FRANK MOORE

Sales Order #: 9438772
 ADC Used: YES
 Elite/Operator: 4/PAUL SALAZAR

OptiCem v6.4.4
 24-Apr-12 08:19

WPX
9 5/8" SURFACE SG 433-27



Customer: WPX	Job Date: 24-Apr-2012	Sales Order #: 9438772
Well Description: SG 433-27	Job Type: SURFACE	ADC Used: YES
Supervisor: BRANDON REEVES	Company Rep: FRANK MOORE	Elite/Operator: 4/PAUL SALAZAR

OptiCem v6.4.4
24-Apr-12 08:19