



Bill Barrett Corporation

Bill Barrett Corp.

Dolores Co., CO (NAD83)

Sec.12-T39N-R18W

Cox 2S-12-39-18

Wellbore #1

Design: Wellbore #1

Standard Survey Report

30 April, 2012





Bill Barrett Corp.
 Project: Dolores Co., CO (NAD83)
 Site: Sec.12-T39N-R18W
 Well: Cox 2S-12-39-18
 Wellbore: Wellbore #1
 Design: Design #3
 Lat: 37° 39' 36.288 N
 Long: 108° 46' 49.440 W
 Pad GL: 6804.60
 KB: WELL @ 6819.10usft



WELL DETAILS: Cox 2S-12-39-18

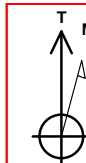
+N/-S	+E/-W	Northing	Ground Level: Easting	6804.60 2050603.982	Latitude 37° 39' 36.288 N	Longitude 108° 46' 49.440 W	Slot
0.00	0.00	1378392.542					

WELLBORE TARGET DETAILS (LAT/LONG)

Name	TVD	+N/-S	+E/-W	Latitude	Longitude	Shape Point
Cox 2S-12-39-18 PBHL	5852.00	-4555.15	-69.49	37° 38' 51.252 N	108° 46' 50.304 W	

SECTION DETAILS

MD	Inc	Azi	TVD	+N/-S	+E/-W	Dleg	TFace	Vsect	Annotation
5923.00	66.20	181.90	5785.78	-308.46	36.48	0.00	0.00	307.87	Tie-In / Start DLS 7.36 TFO -1.21
6246.47	90.00	181.41	5852.00	-622.58	27.45	7.36	-1.21	622.08	EOC / Start 3933.77 hold at 6246.47 MD
10180.24	90.00	181.41	5852.00	-4555.15	-69.49	0.00	0.00	4555.68	TD at 10180.24



Azimuths to True North
 Magnetic North: 10.34°

Magnetic Field
 Strength: 51034.8snT
 Dip Angle: 64.03°
 Date: 04/09/2012
 Model: IGRF2010

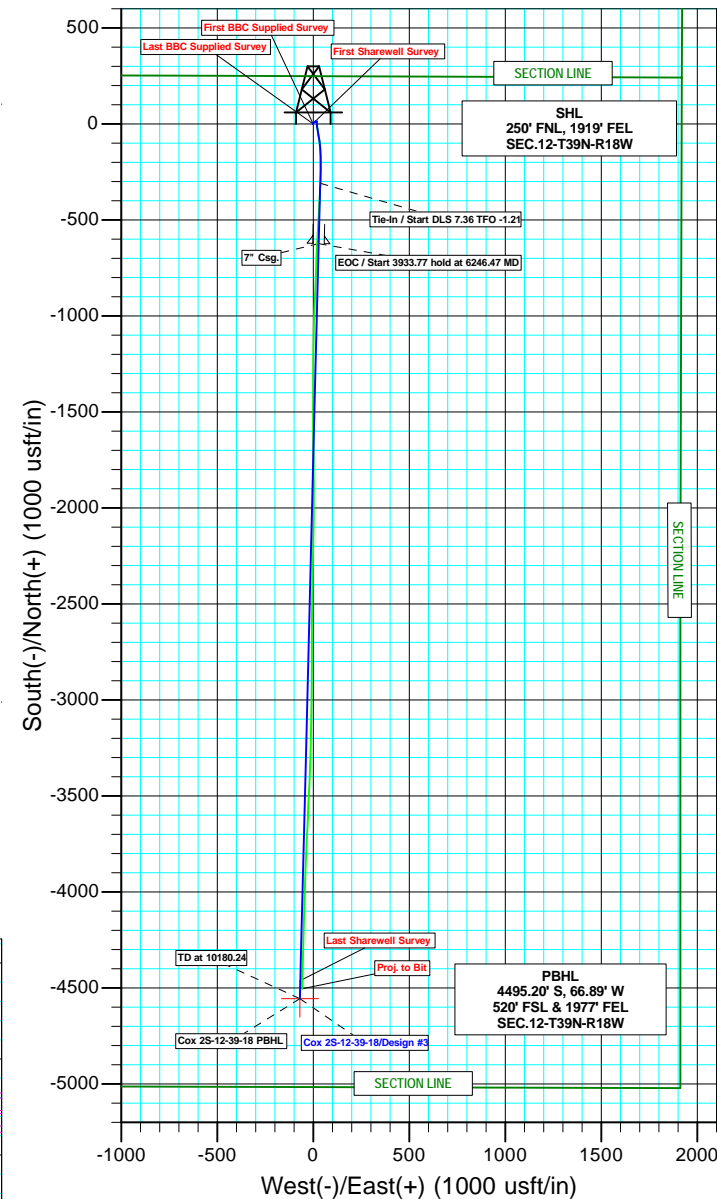
PROJECT DETAILS: Dolores Co., CO (NAD83)

Geodetic System: US State Plane 1983
 Datum: North American Datum 1983
 Ellipsoid: GRS 1980
 Zone: Colorado Southern Zone

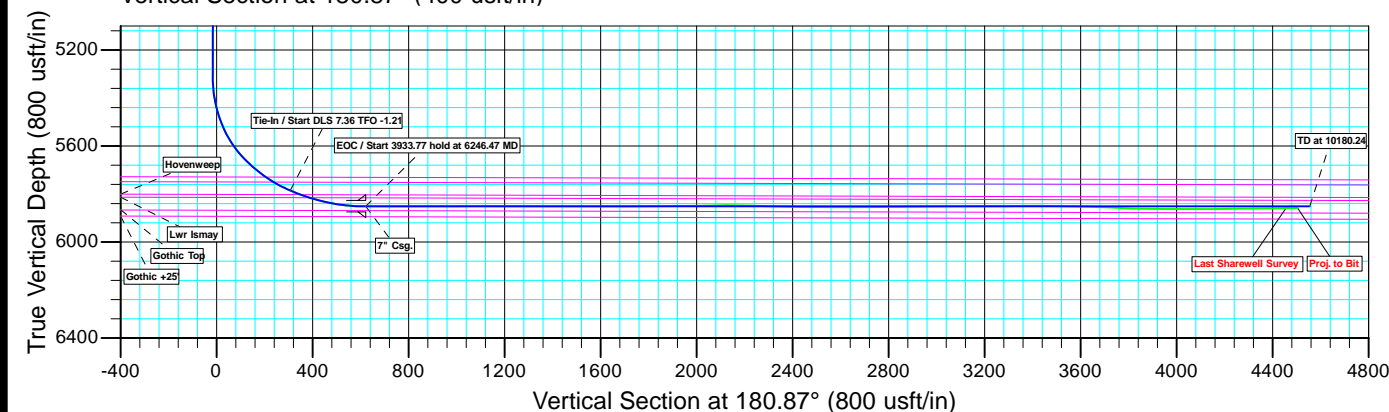
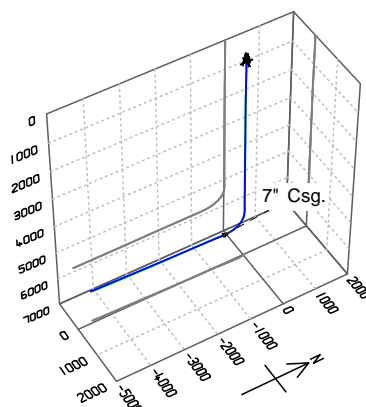
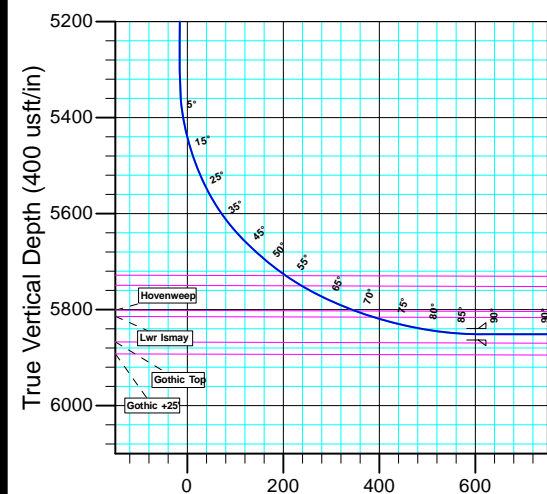
System Datum: Mean Sea Level

CASING DETAILS

TVD	MD	Name	Size
5852.00	6246.47	7" Csg.	7



Plan: Design #3 (Cox 2S-12-39-18/Wellbore #1)
 Created By: Bret Wolford Date: 10:40, April 30 2012



Company:	Bill Barrett Corp.	Local Co-ordinate Reference:	Well Cox 2S-12-39-18
Project:	Dolores Co., CO (NAD83)	TVD Reference:	WELL @ 6819.10usft
Site:	Sec.12-T39N-R18W	MD Reference:	WELL @ 6819.10usft
Well:	Cox 2S-12-39-18	North Reference:	True
Wellbore:	Wellbore #1	Survey Calculation Method:	Minimum Curvature
Design:	Wellbore #1	Database:	EDM 5000.1 Single User Db

Project	Dolores Co., CO (NAD83)		
Map System:	US State Plane 1983	System Datum:	Mean Sea Level
Geo Datum:	North American Datum 1983		
Map Zone:	Colorado Southern Zone		

Site	Sec.12-T39N-R18W				
Site Position:		Northing:	1,378,392.552 usft	Latitude:	37° 39' 36.288 N
From:	Lat/Long	Easting:	2,050,603.982 usft	Longitude:	108° 46' 49.440 W
Position Uncertainty:	0.00 usft	Slot Radius:	13-3/16"	Grid Convergence:	-2.01 °

Well	Cox 2S-12-39-18					
Well Position	+N/-S	0.00 usft	Northing:	1,378,392.542 usft	Latitude:	37° 39' 36.288 N
	+E/-W	0.00 usft	Easting:	2,050,603.982 usft	Longitude:	108° 46' 49.440 W
Position Uncertainty		0.00 usft	Wellhead Elevation:	usft	Ground Level:	6,804.60 usft

Wellbore	Wellbore #1				
Magnetics	Model Name	Sample Date	Declination (°)	Dip Angle (°)	Field Strength (nT)
	IGRF2010	2012/04/09	10.34	64.03	51,035

Design	Wellbore #1				
Audit Notes:					
Version:	1.0	Phase:	ACTUAL	Tie On Depth:	0.00
Vertical Section:	Depth From (TVD) (usft)	+N/-S (usft)	+E/-W (usft)	Direction (°)	
	0.00	0.00	0.00	180.87	

Survey Program	Date	2012/04/30			
From (usft)	To (usft)	Survey (Wellbore)	Tool Name	Description	
100.00	1,935.00	Survey #1 (Wellbore #1)	MWD	MWD - Standard	
1,935.00	10,130.00	Survey #2 (Wellbore #1)	MWD	MWD - Standard	

Survey									
Measured Depth (usft)	Inclination (°)	Azimuth (°)	Vertical Depth (usft)	+N/-S (usft)	+E/-W (usft)	Vertical Section (usft)	Dogleg Rate (°/100usft)	Build Rate (°/100usft)	Turn Rate (°/100usft)
0.00	0.00	0.00	0.00	0.00	0.00	0.00	0.00	0.00	0.00
First BBC Supplied Survey									
100.00	0.16	302.81	100.00	0.08	-0.12	-0.07	0.16	0.16	0.00
200.00	0.22	302.59	200.00	0.25	-0.40	-0.25	0.06	0.06	-0.22
300.00	0.12	77.37	300.00	0.38	-0.46	-0.37	0.32	-0.10	134.78
400.00	0.31	259.02	400.00	0.35	-0.62	-0.34	0.43	0.19	-178.35
500.00	0.25	51.12	500.00	0.44	-0.72	-0.43	0.54	-0.06	152.10
600.00	0.16	284.79	600.00	0.61	-0.68	-0.60	0.37	-0.09	-126.33
700.00	0.23	343.68	700.00	0.84	-0.87	-0.83	0.20	0.07	58.89
800.00	0.23	296.22	800.00	1.12	-1.11	-1.10	0.19	0.00	-47.46
900.00	0.23	211.42	900.00	1.04	-1.39	-1.02	0.31	0.00	-84.80
1,000.00	0.23	103.93	1,000.00	0.82	-1.30	-0.80	0.37	0.00	-107.49

Company:	Bill Barrett Corp.	Local Co-ordinate Reference:	Well Cox 2S-12-39-18
Project:	Dolores Co., CO (NAD83)	TVD Reference:	WELL @ 6819.10usft
Site:	Sec.12-T39N-R18W	MD Reference:	WELL @ 6819.10usft
Well:	Cox 2S-12-39-18	North Reference:	True
Wellbore:	Wellbore #1	Survey Calculation Method:	Minimum Curvature
Design:	Wellbore #1	Database:	EDM 5000.1 Single User Db

Survey										
Measured Depth (usft)	Inclination (°)	Azimuth (°)	Vertical Depth (usft)	+N/-S (usft)	+E/-W (usft)	Vertical Section (usft)	Dogleg Rate (°/100usft)	Build Rate (°/100usft)	Turn Rate (°/100usft)	
1,100.00	0.20	312.20	1,100.00	0.89	-1.24	-0.87	0.42	-0.03	-151.73	
1,200.00	0.19	317.59	1,199.99	1.13	-1.48	-1.10	0.02	-0.01	5.39	
1,300.00	0.15	350.12	1,299.99	1.38	-1.61	-1.35	0.10	-0.04	32.53	
1,400.00	0.22	306.61	1,399.99	1.62	-1.79	-1.59	0.15	0.07	-43.51	
1,500.00	0.11	277.74	1,499.99	1.75	-2.04	-1.72	0.13	-0.11	-28.87	
1,600.00	0.24	329.79	1,599.99	1.94	-2.24	-1.91	0.19	0.13	52.05	
1,700.00	0.18	282.28	1,699.99	2.16	-2.50	-2.12	0.18	-0.06	-47.51	
1,800.00	0.21	50.91	1,799.99	2.31	-2.51	-2.27	0.35	0.03	128.63	
1,900.00	0.25	59.70	1,899.99	2.53	-2.18	-2.50	0.05	0.04	8.79	
Last BBC Supplied Survey										
1,935.00	0.23	222.97	1,934.99	2.52	-2.16	-2.49	1.36	-0.06	466.49	
First Sharewell Survey										
2,033.00	0.01	251.70	2,032.99	2.37	-2.30	-2.34	0.23	-0.22	29.32	
2,061.00	0.10	2.30	2,060.99	2.40	-2.30	-2.36	0.37	0.32	395.00	
2,123.00	0.01	295.50	2,122.99	2.45	-2.31	-2.42	0.16	-0.15	-107.74	
2,185.00	0.01	258.90	2,184.99	2.45	-2.32	-2.42	0.01	0.00	-59.03	
2,248.00	0.10	195.90	2,247.99	2.40	-2.34	-2.36	0.15	0.14	-100.00	
2,310.00	0.10	132.00	2,309.99	2.31	-2.31	-2.28	0.17	0.00	-103.06	
2,373.00	0.10	68.70	2,372.99	2.29	-2.22	-2.26	0.17	0.00	-100.48	
2,434.00	0.30	5.70	2,433.99	2.47	-2.15	-2.44	0.44	0.33	-103.28	
2,497.00	0.40	5.30	2,496.99	2.86	-2.12	-2.82	0.16	0.16	-0.63	
2,558.00	0.50	18.90	2,557.99	3.32	-2.01	-3.29	0.24	0.16	22.30	
2,620.00	0.40	22.70	2,619.99	3.78	-1.84	-3.75	0.17	-0.16	6.13	
2,682.00	0.40	32.80	2,681.98	4.16	-1.64	-4.13	0.11	0.00	16.29	
2,744.00	0.40	26.30	2,743.98	4.53	-1.43	-4.51	0.07	0.00	-10.48	
2,807.00	0.40	28.10	2,806.98	4.92	-1.23	-4.90	0.02	0.00	2.86	
2,869.00	0.40	36.80	2,868.98	5.29	-0.99	-5.27	0.10	0.00	14.03	
2,931.00	0.40	49.60	2,930.98	5.60	-0.70	-5.59	0.14	0.00	20.65	
2,993.00	0.40	52.80	2,992.98	5.87	-0.36	-5.87	0.04	0.00	5.16	
3,055.00	0.40	54.70	3,054.97	6.13	-0.01	-6.13	0.02	0.00	3.06	
3,117.00	0.50	49.70	3,116.97	6.43	0.37	-6.43	0.17	0.16	-8.06	
3,179.00	0.50	46.00	3,178.97	6.79	0.77	-6.80	0.05	0.00	-5.97	
3,241.00	0.50	52.50	3,240.97	7.14	1.18	-7.16	0.09	0.00	10.48	
3,303.00	0.60	54.20	3,302.97	7.50	1.66	-7.52	0.16	0.16	2.74	
3,365.00	0.70	61.60	3,364.96	7.87	2.25	-7.90	0.21	0.16	11.94	
3,427.00	0.80	59.90	3,426.96	8.27	2.96	-8.31	0.17	0.16	-2.74	
3,489.00	0.70	65.50	3,488.95	8.64	3.68	-8.70	0.20	-0.16	9.03	
3,551.00	0.70	61.50	3,550.95	8.98	4.36	-9.04	0.08	0.00	-6.45	
3,613.00	0.80	64.60	3,612.94	9.34	5.08	-9.42	0.17	0.16	5.00	
3,675.00	0.80	67.10	3,674.93	9.70	5.87	-9.79	0.06	0.00	4.03	
3,738.00	0.80	66.90	3,737.93	10.04	6.68	-10.14	0.00	0.00	-0.32	
3,801.00	0.50	63.20	3,800.92	10.34	7.33	-10.45	0.48	-0.48	-5.87	
3,864.00	0.40	67.30	3,863.92	10.55	7.78	-10.66	0.17	-0.16	6.51	
3,928.00	0.40	51.30	3,927.92	10.77	8.16	-10.90	0.17	0.00	-25.00	
3,990.00	0.40	40.80	3,989.92	11.07	8.47	-11.20	0.12	0.00	-16.94	
4,052.00	0.50	40.00	4,051.92	11.44	8.79	-11.58	0.16	0.16	-1.29	
4,115.00	0.50	50.90	4,114.92	11.83	9.18	-11.97	0.15	0.00	17.30	
4,179.00	0.40	54.00	4,178.91	12.13	9.57	-12.28	0.16	-0.16	4.84	
4,242.00	0.40	62.90	4,241.91	12.36	9.95	-12.51	0.10	0.00	14.13	
4,305.00	0.40	66.90	4,304.91	12.55	10.34	-12.71	0.04	0.00	6.35	
4,368.00	0.40	46.30	4,367.91	12.79	10.71	-12.95	0.23	0.00	-32.70	
4,431.00	0.50	49.10	4,430.91	13.12	11.07	-13.29	0.16	0.16	4.44	
4,494.00	0.20	53.80	4,493.91	13.37	11.37	-13.54	0.48	-0.48	7.46	
4,557.00	0.20	39.30	4,556.91	13.52	11.53	-13.69	0.08	0.00	-23.02	

Company:	Bill Barrett Corp.	Local Co-ordinate Reference:	Well Cox 2S-12-39-18
Project:	Dolores Co., CO (NAD83)	TVD Reference:	WELL @ 6819.10usft
Site:	Sec.12-T39N-R18W	MD Reference:	WELL @ 6819.10usft
Well:	Cox 2S-12-39-18	North Reference:	True
Wellbore:	Wellbore #1	Survey Calculation Method:	Minimum Curvature
Design:	Wellbore #1	Database:	EDM 5000.1 Single User Db

Survey										
Measured Depth (usft)	Inclination (°)	Azimuth (°)	Vertical Depth (usft)	+N/-S (usft)	+E/-W (usft)	Vertical Section (usft)	Dogleg Rate (°/100usft)	Build Rate (°/100usft)	Turn Rate (°/100usft)	
4,620.00	0.10	97.00	4,619.90	13.59	11.65	-13.77	0.27	-0.16	91.59	
4,683.00	0.40	88.20	4,682.90	13.59	11.93	-13.77	0.48	0.48	-13.97	
4,746.00	0.40	69.70	4,745.90	13.68	12.35	-13.86	0.20	0.00	-29.37	
4,808.00	0.50	89.20	4,807.90	13.76	12.83	-13.95	0.29	0.16	31.45	
4,871.00	0.60	79.60	4,870.90	13.82	13.43	-14.02	0.22	0.16	-15.24	
4,933.00	0.50	73.40	4,932.90	13.96	14.00	-14.17	0.19	-0.16	-10.00	
4,995.00	0.80	71.70	4,994.89	14.17	14.67	-14.39	0.48	0.48	-2.74	
5,058.00	1.00	64.20	5,057.88	14.55	15.59	-14.78	0.37	0.32	-11.90	
5,120.00	0.80	63.90	5,119.88	14.97	16.46	-15.22	0.32	-0.32	-0.48	
5,176.00	0.90	76.80	5,175.87	15.24	17.24	-15.51	0.38	0.18	23.04	
5,239.00	0.20	57.80	5,238.87	15.42	17.82	-15.69	1.13	-1.11	-30.16	
5,301.00	0.01	59.60	5,300.87	15.48	17.91	-15.75	0.31	-0.31	2.90	
5,363.00	4.40	173.10	5,362.81	13.12	18.20	-13.39	7.10	7.08	183.06	
5,397.00	9.70	175.90	5,396.54	8.96	18.56	-9.24	15.62	15.59	8.24	
5,426.00	12.80	175.90	5,424.98	3.32	18.97	-3.61	10.69	10.69	0.00	
5,461.00	16.00	177.00	5,458.87	-5.37	19.50	5.07	9.18	9.14	3.14	
5,489.00	19.20	174.50	5,485.56	-13.81	20.14	13.50	11.74	11.43	-8.93	
5,523.00	23.40	171.40	5,517.23	-26.05	21.69	25.72	12.79	12.35	-9.12	
5,551.00	26.60	170.60	5,542.60	-37.74	23.54	37.37	11.49	11.43	-2.86	
5,585.00	31.10	169.90	5,572.38	-53.90	26.33	53.49	13.27	13.24	-2.06	
5,613.00	34.70	170.30	5,595.88	-68.88	28.94	68.43	12.88	12.86	1.43	
5,647.00	39.20	172.10	5,623.05	-89.07	32.05	88.57	13.61	13.24	5.29	
5,675.00	42.90	174.20	5,644.16	-107.33	34.23	106.79	14.10	13.21	7.50	
5,709.00	46.60	175.90	5,668.30	-131.17	36.28	130.60	11.44	10.88	5.00	
5,737.00	48.70	177.00	5,687.16	-151.82	37.56	151.23	8.04	7.50	3.93	
5,771.00	51.70	178.40	5,708.93	-177.92	38.60	177.31	9.37	8.82	4.12	
5,799.00	54.00	179.80	5,725.83	-200.23	38.95	199.61	9.13	8.21	5.00	
5,833.00	58.40	181.20	5,744.74	-228.47	38.69	227.86	13.39	12.94	4.12	
5,861.00	61.40	181.60	5,758.79	-252.69	38.10	252.08	10.79	10.71	1.43	
5,895.00	64.80	181.60	5,774.17	-282.99	37.25	282.39	10.00	10.00	0.00	
5,923.00	66.20	181.90	5,785.78	-308.46	36.48	307.87	5.09	5.00	1.07	
5,957.00	68.40	183.00	5,798.90	-339.79	35.13	339.22	7.13	6.47	3.24	
5,985.00	71.40	182.60	5,808.52	-366.05	33.85	365.50	10.80	10.71	-1.43	
6,019.00	73.60	183.00	5,818.74	-398.44	32.26	397.90	6.57	6.47	1.18	
6,047.00	75.00	183.30	5,826.32	-425.35	30.78	424.84	5.11	5.00	1.07	
6,082.00	77.20	183.00	5,834.73	-459.28	28.92	458.78	6.34	6.29	-0.86	
6,110.00	79.70	182.60	5,840.33	-486.67	27.58	486.20	9.04	8.93	-1.43	
6,144.00	82.30	183.00	5,845.65	-520.21	25.94	519.76	7.73	7.65	1.18	
6,173.00	84.80	183.00	5,848.91	-548.99	24.43	548.55	8.62	8.62	0.00	
6,207.00	88.30	182.60	5,850.95	-582.88	22.77	582.46	10.36	10.29	-1.18	
6,247.00	89.90	182.60	5,851.58	-622.83	20.96	622.44	4.00	4.00	0.00	
6,309.00	89.70	182.30	5,851.80	-684.77	18.31	684.42	0.58	-0.32	-0.48	
6,368.00	90.10	182.60	5,851.90	-743.72	15.78	743.39	0.85	0.68	0.51	
6,431.00	89.90	182.60	5,851.90	-806.66	12.93	806.36	0.32	-0.32	0.00	
6,494.00	90.10	181.90	5,851.90	-869.61	10.45	869.35	1.16	0.32	-1.11	
6,557.00	90.30	183.00	5,851.68	-932.55	7.76	932.32	1.77	0.32	1.75	
6,622.00	90.30	182.30	5,851.34	-997.48	4.75	997.29	1.08	0.00	-1.08	
6,685.00	90.10	181.60	5,851.12	-1,060.44	2.61	1,060.28	1.16	-0.32	-1.11	
6,748.00	90.10	180.90	5,851.01	-1,123.42	1.24	1,123.27	1.11	0.00	-1.11	
6,811.00	89.90	180.50	5,851.01	-1,186.42	0.47	1,186.27	0.71	-0.32	-0.63	
6,873.00	90.10	180.50	5,851.01	-1,248.42	-0.07	1,248.27	0.32	0.32	0.00	
6,936.00	89.70	179.80	5,851.12	-1,311.42	-0.24	1,311.27	1.28	-0.63	-1.11	
6,999.00	89.70	180.10	5,851.45	-1,374.42	-0.18	1,374.26	0.48	0.00	0.48	
7,063.00	89.70	180.10	5,851.79	-1,438.41	-0.30	1,438.25	0.00	0.00	0.00	

Company:	Bill Barrett Corp.	Local Co-ordinate Reference:	Well Cox 2S-12-39-18
Project:	Dolores Co., CO (NAD83)	TVD Reference:	WELL @ 6819.10usft
Site:	Sec.12-T39N-R18W	MD Reference:	WELL @ 6819.10usft
Well:	Cox 2S-12-39-18	North Reference:	True
Wellbore:	Wellbore #1	Survey Calculation Method:	Minimum Curvature
Design:	Wellbore #1	Database:	EDM 5000.1 Single User Db

Survey										
Measured Depth (usft)	Inclination (°)	Azimuth (°)	Vertical Depth (usft)	+N/-S (usft)	+E/-W (usft)	Vertical Section (usft)	Dogleg Rate (°/100usft)	Build Rate (°/100usft)	Turn Rate (°/100usft)	
7,126.00	89.90	179.80	5,852.01	-1,501.41	-0.24	1,501.24	0.57	0.32	-0.48	
7,190.00	89.70	179.80	5,852.23	-1,565.41	-0.02	1,565.23	0.31	-0.31	0.00	
7,253.00	89.70	179.80	5,852.56	-1,628.41	0.20	1,628.22	0.00	0.00	0.00	
7,316.00	90.10	179.40	5,852.67	-1,691.41	0.64	1,691.20	0.90	0.63	-0.63	
7,380.00	90.40	179.80	5,852.39	-1,755.41	1.09	1,755.19	0.78	0.47	0.62	
7,444.00	90.60	179.40	5,851.83	-1,819.40	1.54	1,819.17	0.70	0.31	-0.62	
7,508.00	91.00	179.10	5,850.94	-1,883.39	2.37	1,883.14	0.78	0.62	-0.47	
7,540.00	91.10	179.10	5,850.35	-1,915.38	2.88	1,915.12	0.31	0.31	0.00	
7,603.00	91.00	181.20	5,849.20	-1,978.37	2.71	1,978.10	3.34	-0.16	3.33	
7,666.00	90.80	180.10	5,848.21	-2,041.35	2.00	2,041.09	1.77	-0.32	-1.75	
7,729.00	90.80	181.20	5,847.33	-2,104.34	1.28	2,104.08	1.75	0.00	1.75	
7,793.00	88.70	180.50	5,847.61	-2,168.33	0.33	2,168.07	3.46	-3.28	-1.09	
7,856.00	88.50	181.20	5,849.15	-2,231.31	-0.60	2,231.06	1.16	-0.32	1.11	
7,919.00	88.50	180.90	5,850.80	-2,294.27	-1.76	2,294.03	0.48	0.00	-0.48	
7,983.00	89.00	181.60	5,852.19	-2,358.24	-3.15	2,358.02	1.34	0.78	1.09	
8,047.00	88.90	180.90	5,853.36	-2,422.22	-4.55	2,422.00	1.10	-0.16	-1.09	
8,110.00	88.70	180.90	5,854.68	-2,485.19	-5.54	2,484.99	0.32	-0.32	0.00	
8,173.00	88.90	180.90	5,856.00	-2,548.17	-6.53	2,547.98	0.32	0.32	0.00	
8,237.00	90.40	180.50	5,856.39	-2,612.16	-7.31	2,611.97	2.43	2.34	-0.62	
8,301.00	90.40	180.10	5,855.95	-2,676.16	-7.64	2,675.97	0.62	0.00	-0.62	
8,364.00	90.80	179.80	5,855.29	-2,739.16	-7.59	2,738.96	0.79	0.63	-0.48	
8,428.00	91.00	180.10	5,854.28	-2,803.15	-7.53	2,802.94	0.56	0.31	0.47	
8,492.00	91.10	180.10	5,853.11	-2,867.14	-7.64	2,866.92	0.16	0.16	0.00	
8,553.00	90.40	180.90	5,852.31	-2,928.13	-8.18	2,927.92	1.74	-1.15	1.31	
8,616.00	89.90	180.90	5,852.15	-2,991.12	-9.17	2,990.92	0.79	-0.79	0.00	
8,678.00	89.90	180.50	5,852.25	-3,053.12	-9.92	3,052.91	0.65	0.00	-0.65	
8,741.00	90.30	180.90	5,852.14	-3,116.11	-10.69	3,115.91	0.90	0.63	0.63	
8,804.00	90.40	180.90	5,851.76	-3,179.10	-11.68	3,178.91	0.16	0.16	0.00	
8,867.00	90.10	181.60	5,851.48	-3,242.09	-13.06	3,241.91	1.21	-0.48	1.11	
8,930.00	91.00	181.90	5,850.88	-3,305.06	-14.98	3,304.90	1.51	1.43	0.48	
8,993.00	90.40	182.60	5,850.11	-3,368.00	-17.45	3,367.88	1.46	-0.95	1.11	
9,056.00	89.40	183.00	5,850.22	-3,430.93	-20.53	3,430.84	1.71	-1.59	0.63	
9,119.00	89.00	182.30	5,851.10	-3,493.85	-23.44	3,493.80	1.28	-0.63	-1.11	
9,183.00	89.60	182.60	5,851.88	-3,557.79	-26.18	3,557.77	1.05	0.94	0.47	
9,247.00	88.70	182.30	5,852.83	-3,621.72	-28.92	3,621.74	1.48	-1.41	-0.47	
9,310.00	87.10	183.00	5,855.14	-3,684.61	-31.83	3,684.67	2.77	-2.54	1.11	
9,373.00	87.10	182.60	5,858.33	-3,747.45	-34.90	3,747.55	0.63	0.00	-0.63	
9,436.00	88.20	182.60	5,860.91	-3,810.33	-37.75	3,810.47	1.75	1.75	0.00	
9,498.00	89.20	182.30	5,862.32	-3,872.26	-40.40	3,872.43	1.68	1.61	-0.48	
9,562.00	89.90	181.60	5,862.82	-3,936.22	-42.58	3,936.41	1.55	1.09	-1.09	
9,625.00	89.90	181.60	5,862.93	-3,999.20	-44.34	3,999.41	0.00	0.00	0.00	
9,688.00	90.10	181.60	5,862.93	-4,062.17	-46.10	4,062.40	0.32	0.32	0.00	
9,750.00	90.30	181.60	5,862.71	-4,124.15	-47.83	4,124.40	0.32	0.32	0.00	
9,814.00	90.10	181.20	5,862.49	-4,188.13	-49.39	4,188.39	0.70	-0.31	-0.62	
9,877.00	90.60	181.90	5,862.10	-4,251.10	-51.10	4,251.39	1.37	0.79	1.11	
9,941.00	90.80	181.60	5,861.32	-4,315.07	-53.05	4,315.38	0.56	0.31	-0.47	
10,004.00	91.00	181.60	5,860.33	-4,378.04	-54.81	4,378.36	0.32	0.32	0.00	
10,067.00	90.80	181.60	5,859.34	-4,441.00	-56.57	4,441.35	0.32	-0.32	0.00	
Last Sharewell Survey										
10,082.00	90.60	181.20	5,859.16	-4,456.00	-56.94	4,456.35	2.98	-1.33	-2.67	
Proj. to Bit										
10,130.00	90.60	181.20	5,858.66	-4,503.98	-57.94	4,504.34	0.00	0.00	0.00	

Company:	Bill Barrett Corp.	Local Co-ordinate Reference:	Well Cox 2S-12-39-18
Project:	Dolores Co., CO (NAD83)	TVD Reference:	WELL @ 6819.10usft
Site:	Sec.12-T39N-R18W	MD Reference:	WELL @ 6819.10usft
Well:	Cox 2S-12-39-18	North Reference:	True
Wellbore:	Wellbore #1	Survey Calculation Method:	Minimum Curvature
Design:	Wellbore #1	Database:	EDM 5000.1 Single User Db

Design Annotations

Measured Depth (usft)	Vertical Depth (usft)	Local Coordinates		Comment
		+N/-S (usft)	+E/-W (usft)	
100.00	100.00	0.08	-0.12	First BBC Supplied Survey
1,935.00	1,934.99	2.52	-2.16	Last BBC Supplied Survey
2,033.00	2,032.99	2.37	-2.30	First Sharewell Survey
10,082.00	5,859.16	-4,456.00	-56.94	Last Sharewell Survey
10,130.00	5,858.66	-4,503.98	-57.94	Proj. to Bit

Checked By: _____ Approved By: _____ Date: _____