

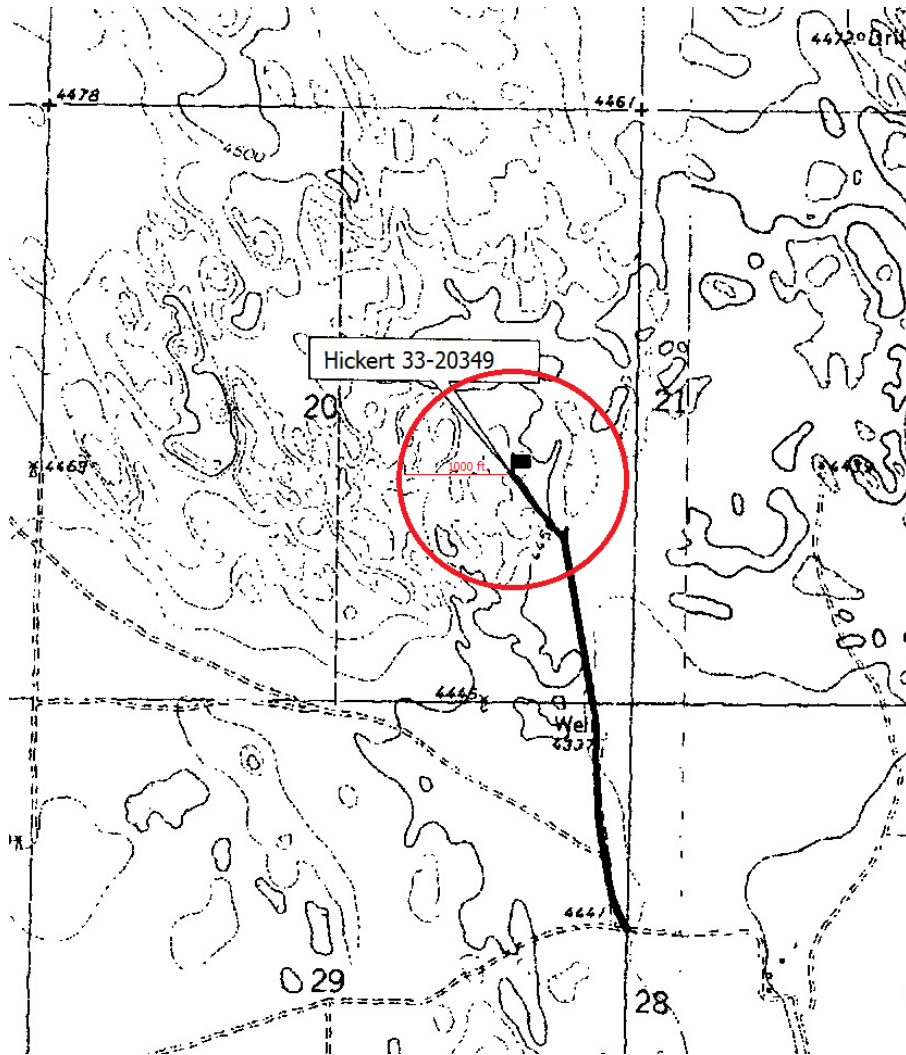
# Hydrology Map

## Smith Energy Corp

API# 05-121-10756

Hickert 33-20349

NESE Section 20 T3S-R49W, 6<sup>th</sup> pm  
(2320'FSL, 1340'FEL)



### Notes:

- There are no surface waters or water wells within 1000 ft of the proposed pit limits of disturbance.