

**HALLIBURTON**

---

# **WPX ENERGY ROCKY MOUNTAIN LLC-EBUS**

---

**SG 423-27  
GRAND VALLEY  
Garfield County , Colorado**

## **Cement Surface Casing** **19-Apr-2012**

### **Post Job Summary**

## The Road to Excellence Starts with Safety

Sold To #: 300721	Ship To #: 300721	Quote #:	Sales Order #: 9396744
Customer: WPX ENERGY ROCKY MOUNTAIN LLC-EBUS	Customer Rep: Moore, Frank		
Well Name: SG	Well #: 423-27	API/UWI #:	
Field: GRAND VALLEY	City (SAP): TULSA	County/Parish: Garfield	State: Colorado
Contractor: NABORS	Rig/Platform Name/Num: NABORS 573		
Job Purpose: Cement Surface Casing			
Well Type: Development Well	Job Type: Cement Surface Casing		
Sales Person: MAYO, MARK	Srv Supervisor: NICKLE, RYON	MBU ID Emp #:	454759

### Job Personnel

HES Emp Name	Exp Hrs	Emp #	HES Emp Name	Exp Hrs	Emp #	HES Emp Name	Exp Hrs	Emp #
BORSZICH, STEPHEN A	6	412388	JENSEN, SHANE Lynn	6	441759	NICKLE, RYON	6	454759
WADE, LOGAN D	6	488896						

### Equipment

HES Unit #	Distance-1 way	HES Unit #	Distance-1 way	HES Unit #	Distance-1 way	HES Unit #	Distance-1 way
10565341	60 mile	10804567	60 mile	10951249	60 mile	11542767	60 mile
11808835	60 mile						

### Job Hours

Date	On Location Hours	Operating Hours	Date	On Location Hours	Operating Hours	Date	On Location Hours	Operating Hours
4/19/20	6	1						
TOTAL	Total is the sum of each column separately							

### Job

Formation Name	Formation Depth (MD)	Top	Bottom	Job Type	Job depth MD	Water Depth	Perforation Depth (MD)	From	To	Called Out	Date	Time	Time Zone
		0	620	BHST	576. ft						19 - Apr - 2012	07:30	MST
										On Location	19 - Apr - 2012	10:00	MST
										Job Started	19 - Apr - 2012	14:19	MST
										Job Completed	19 - Apr - 2012	15:07	MST
										Departed Loc	19 - Apr - 2012	16:00	MST

### Well Data

Description	New / Used	Max pressure psig	Size in	ID in	Weight lbm/ft	Thread	Grade	Top MD ft	Bottom MD ft	Top TVD ft	Bottom TVD ft
-------------	------------	-------------------	---------	-------	---------------	--------	-------	-----------	--------------	------------	---------------

### Sales/Rental/3<sup>rd</sup> Party (HES)

Description	Qty	Qty uom	Depth	Supplier
PLUG,CMTG,TOP,9 5/8,HWE,8.16 MIN/9.06 MA	1	EA		

### Tools and Accessories

Type	Size	Qty	Make	Depth	Type	Size	Qty	Make	Depth	Type	Size	Qty	Make
Guide Shoe					Packer					Top Plug	9.625	1	HES
Float Shoe					Bridge Plug					Bottom Plug			
Float Collar					Retainer					SSR plug set			
Insert Float										Plug Container	9.625	1	HES
Stage Tool										Centralizers			

### Miscellaneous Materials

Gelling Agt	Conc	Surfactant	Conc	Acid Type	Qty	Conc	%
Treatment Fld	Conc	Inhibitor	Conc	Sand Type	Size	Qty	

### Fluid Data

Stage/Plug #: 1	Fluid #	Stage Type	Fluid Name	Qty	Qty uom	Mixing Density lbm/gal	Yield ft <sup>3</sup> /sk	Mix Fluid Gal/sk	Rate bbl/min	Total Mix Fluid Gal/sk
-----------------	---------	------------	------------	-----	---------	------------------------	---------------------------	------------------	--------------	------------------------

Stage/Plug #: 1

Stage/Plug #: 1									
Fluid #	Stage Type	Fluid Name	Qty	Qty uom	Mixing Density lbm/gal	Yield ft <sup>3</sup> /sk	Mix Fluid Gal/sk	Rate bbl/min	Total Mix Fluid Gal/sk
1	Fresh Water		20.00	bbl	8.33	.0	.0	4	
2	Tail Cement	VERSACEM (TM) SYSTEM (452010)	175.0	sacks	12.8	2.11	11.75	6	11.75
3	Displacement Fluid		44.00	bbl	8.34	.0	.0	8	
Calculated Values		Pressures		Volumes					
Displacement	44.67	Shut In: Instant		Lost Returns		Cement Slurry	65.76	Pad	
Top Of Cement		5 Min		Cement Returns	15	Actual Displacement	44.67	Treatment	
Frac Gradient		15 Min		Spacers	20	Load and Breakdown		Total Job	130.53
Rates									
Circulating	RIG	Mixing	6	Displacement	8	Avg. Job	7		
Cement Left In Pipe	Amount	44.3 ft	Reason	Shoe Joint					
Frac Ring # 1 @	ID	Frac ring # 2 @	ID	Frac Ring # 3 @	ID	Frac Ring # 4 @	ID		
The Information Stated Herein Is Correct				Customer Representative Signature					



*The Road to Excellence Starts with Safety*

Sold To #: 300721	Ship To #: 300721	Quote #:	Sales Order #: 9396744
Customer: WPX ENERGY ROCKY MOUNTAIN LLC-EBUS	Customer Rep: Moore, Frank		
Well Name: SG	Well #: 423-27	API/UWI #:	
Field: GRAND VALLEY	City (SAP): TULSA	County/Parish: Garfield	State: Colorado
Legal Description:			
Lat: N 0 deg. OR N 0 deg. 0 min. 0 secs.		Long: E 0 deg. OR E 0 deg. 0 min. 0 secs.	
Contractor: NABORS	Rig/Platform Name/Num: NABORS 573		
Job Purpose: Cement Surface Casing	Ticket Amount:		
Well Type: Development Well	Job Type: Cement Surface Casing		
Sales Person: MAYO, MARK	Srv Supervisor: NICKLE, RYON	MBU ID Emp #: 454759	

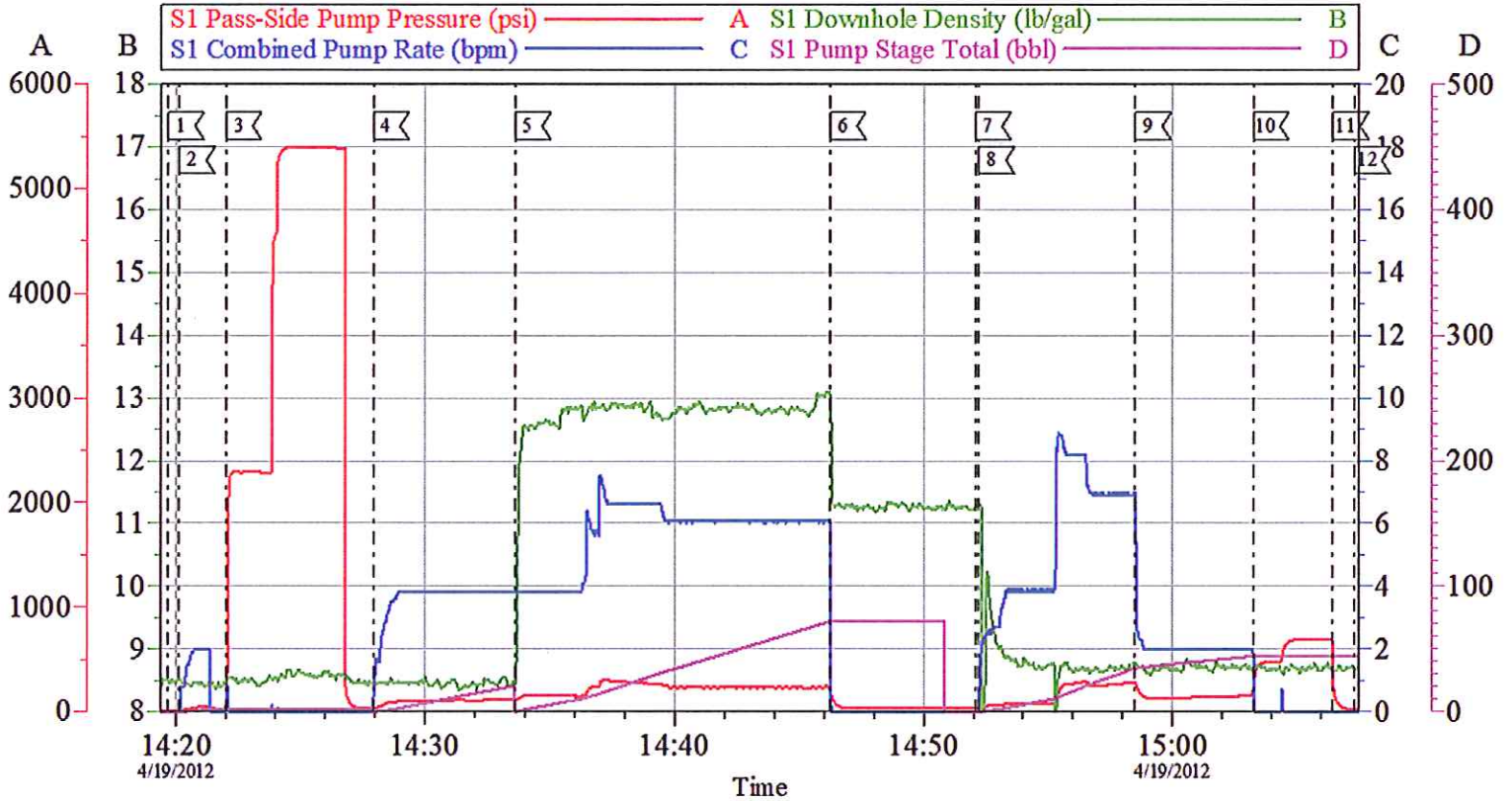
Activity Description	Date/Time	Cht #	Rate bbl/ min	Volume bbl		Pressure psig		Comments
				Stage	Total	Tubing	Casing	
Arrive at Location from Other Job or Site	04/19/2012 10:00							RIG RIGGING UP CASING CREW
Assessment Of Location Safety Meeting	04/19/2012 10:05							ALL HES CEMENT CREW
Other	04/19/2012 10:15							SPOT EQUIPMENT; 1 CEMENTERS F 400, 1 ELITE PUMPING UNIT, 1 660 BULK TRANSPORT
Pre-Rig Up Safety Meeting	04/19/2012 10:30							ALL HES CEMENT CREW
Pre-Job Safety Meeting	04/19/2012 14:00							ALL HES CEMENT CREW, RIG CREW, COMPANY REP, AVAILABLE 3RD PARTY EE'S
Start Job	04/19/2012 14:19							TD- 620' TP- 612' SHOE- 44.32' OH- 13.5" SURFACE CASING- 9.625" 32.3#/FT H-40 MUD- 10.6 PPG
Other	04/19/2012 14:20		2	2			48.0	FILL LINES, FRESH WATER
Pressure Test	04/19/2012 14:21							STALL OUT @ PSI, HELD FOR 30 SEC. PRESSURE UP TO PSI HELD FOR 2 MIN, PRESSURE DROP TO PSI
Pump Spacer 1	04/19/2012 14:27		4	20			90.0	FRESH WATER
Pump Tail Cement	04/19/2012 14:33		8	65.76			236.0	175 SKS; 12.8 PPG, 2.11 FT3/SK, 11.75 GAL/SK

## Cementing Job Log

Activity Description	Date/Time	Cht #	Rate bbl/ min	Volume bbl		Pressure psig		Comments
				Stage	Total	Tubing	Casing	
Shutdown	04/19/2012 14:46							WASH UP ON TOP OF PLUG PER CO REP
Drop Top Plug	04/19/2012 14:52							CO REP VERIFIED PLUG LAUNCHED
Pump Displacement	04/19/2012 14:52		10	34.67			229.0	FRESH WATER
Slow Rate	04/19/2012 14:58		2	10			135.0	
Bump Plug	04/19/2012 15:03						672.0	
Check Floats	04/19/2012 15:06							FLOATS HELD, RETURNED 3/4 BBLS H2O
End Job	04/19/2012 15:07							PIPE WAS NOT MOVED, GOOD RETURNS THROUGHOUT, 15 BBLS CEMENT TO SURFACE
Post-Job Safety Meeting (Pre Rig-Down)	04/19/2012 15:10							ALL HES CEMENT CREW
Pre-Convoy Safety Meeting	04/19/2012 15:50							ALL HES CEMENT CREW
Crew Leave Location	04/19/2012 16:00							THANK YOU FOR USING HALLIBURTON CEMENTING, RYON NICKLE AND CREW

# WPX - SG 423-27

SURFACE



Local Event Log							
1	START JOB	14:19:40	2	FILL LINES	14:20:06	3	PRESSURE TEST
4	PUMP H2O SPACER	14:27:55	5	PUMP TAIL CEMENT	14:33:36	6	SHUTDOWN
7	DROP TOP PLUG	14:52:04	8	PUMP DISPLACEMENT	14:52:13	9	SLOW RATE
10	BUMP PLUG	15:03:15	11	CHECK FLOATS	15:06:28	12	END JOB

Customer: WPX ENERGY ROCKY MOUNTAIN LLC-EBUS  
Well Description: SG 423-27  
Company Rep: FRANK MOORE

Job Date: 19-Apr-2012  
Job Type: SURFACE  
Cement Supervisor: RYON NECKLE

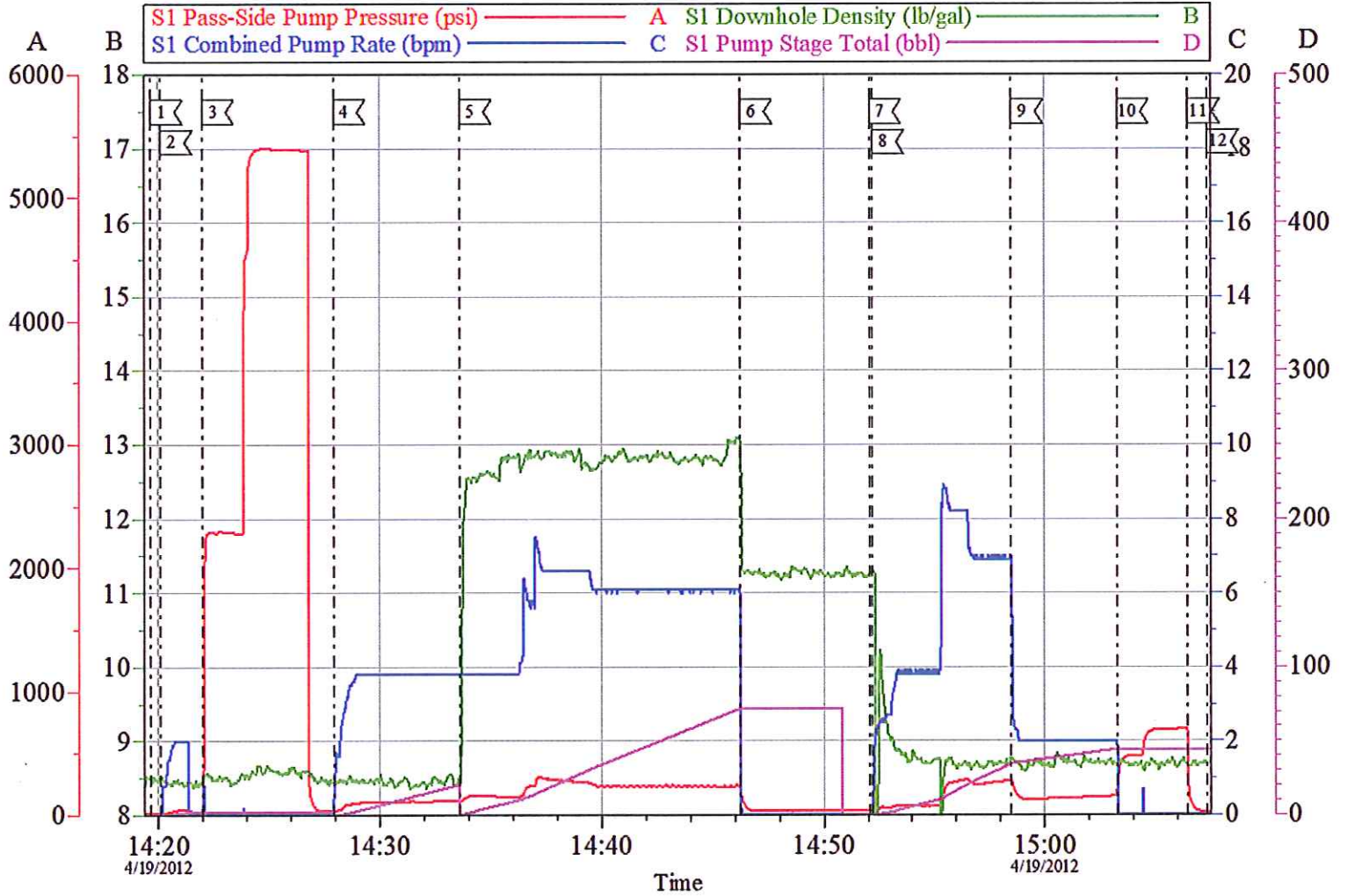
Sales Order #: 9396744  
ADC Used: YES  
Edit # / Operator: E1 / LOGAN WADE / STEVE BORSHICH

OptiCem v6.4.10  
19-Apr-12 15:30



# WPX - SG 423-27

SURFACE



Customer: WPX ENERGY ROCKY MOUNTAIN LLC-EBUS  
Well Description: SG 423-27  
Company Rep: FRANK MOORE

Job Date: 19-Apr-2012  
Job Type: SURFACE  
Cement Supervisor: RYON NECKLE

Sales Order #: 9396744  
ADC Used: YES  
Site # / Operator: E1 / LOGAN WADE / STEVE BORSZICH

OptiCem v6.4.10  
19-Apr-12 15:30