

BRAN-DEX

WIRELINE SERVICES

G/...
CEILING ...

CD in office

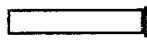
Company Well Field County State PETROLEUM MANAGEMENT LLC. OLE 21-24 WATTENBERG WELD CO	Company		PETROLEUM MANAGEMENT LLC.	
	Well		OLE 21-24	
	Field		WATTENBERG	
	County	WELD	State	CO
	Location:		API #:	
	462' FNL & 2180' FWL NE NW		Other Services	
	SEC 24 TWP 6N RGE 65W		Elevation	
	Permanent Datum	GL	Elevation	4691
	Log Measured From	KB	K.B. 4707 D.F. 4706 G.L. 4691	
	Drilling Measured From	KB		
Date	5-1-06			
Run Number	ONE		SUSSEX	
Depth Driller	7136			
Depth Logger	7080			
Bottom Logged Interval	7074		5500	
Top Log Interval	5500		2925	
Open Hole Size				
Type Fluid	WATER			
Density / Viscosity				
Max. Recorded Temp.	224			
Estimated Cement Top	3050			
Time Well Ready				
Time Logger on Bottom				
Equipment Number	467			
Location	STERLING			
Recorded By	HOBBS			
Witnessed By	ANDY PETERSON			
Borehole Record				
Run Number	Bit	From	To	Size
Tubing Record				
Weight	From	To		
Casing Record				
Size	Wgt/Ft	Top	Bottom	
Surface String				
Prot. String				
Production String	4.5"			
Liner				

2025 Fold Here

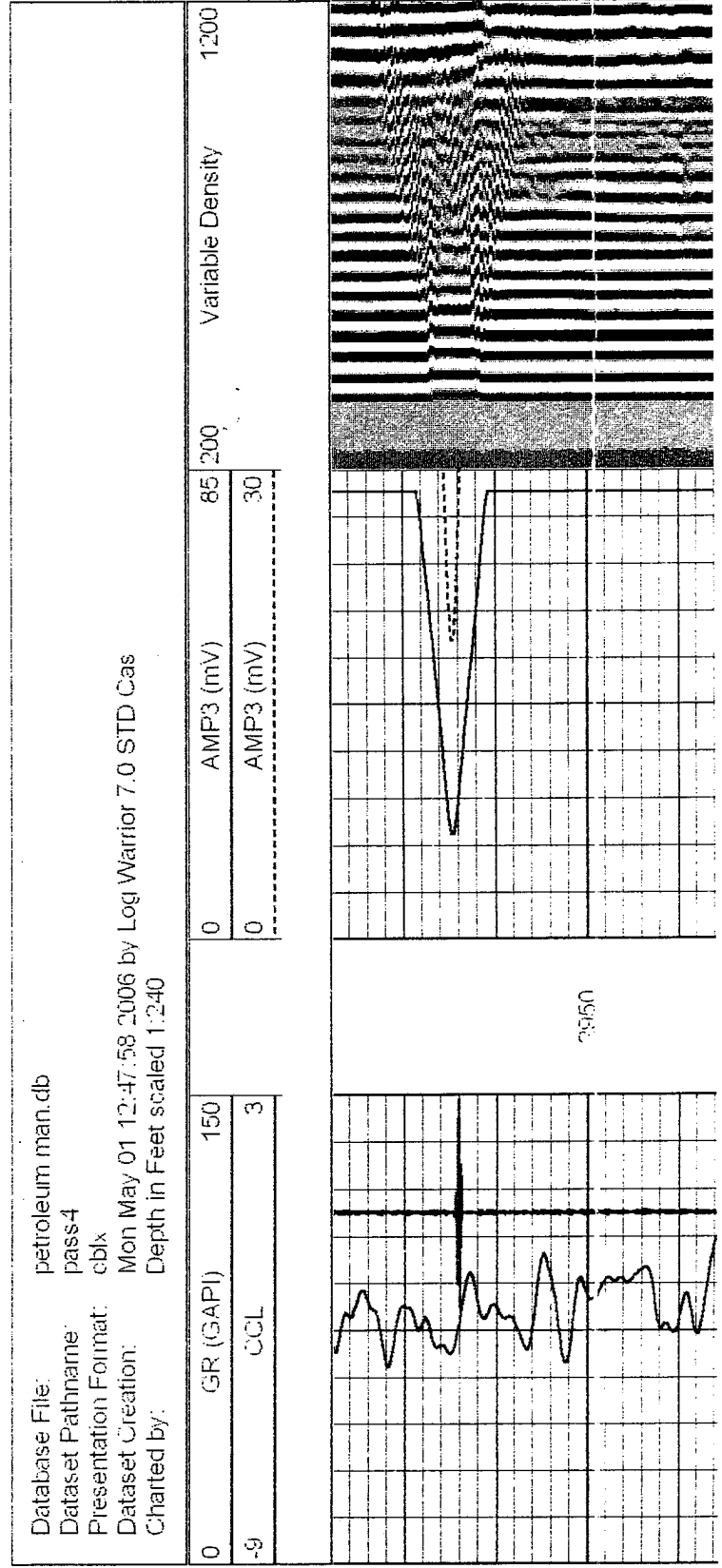
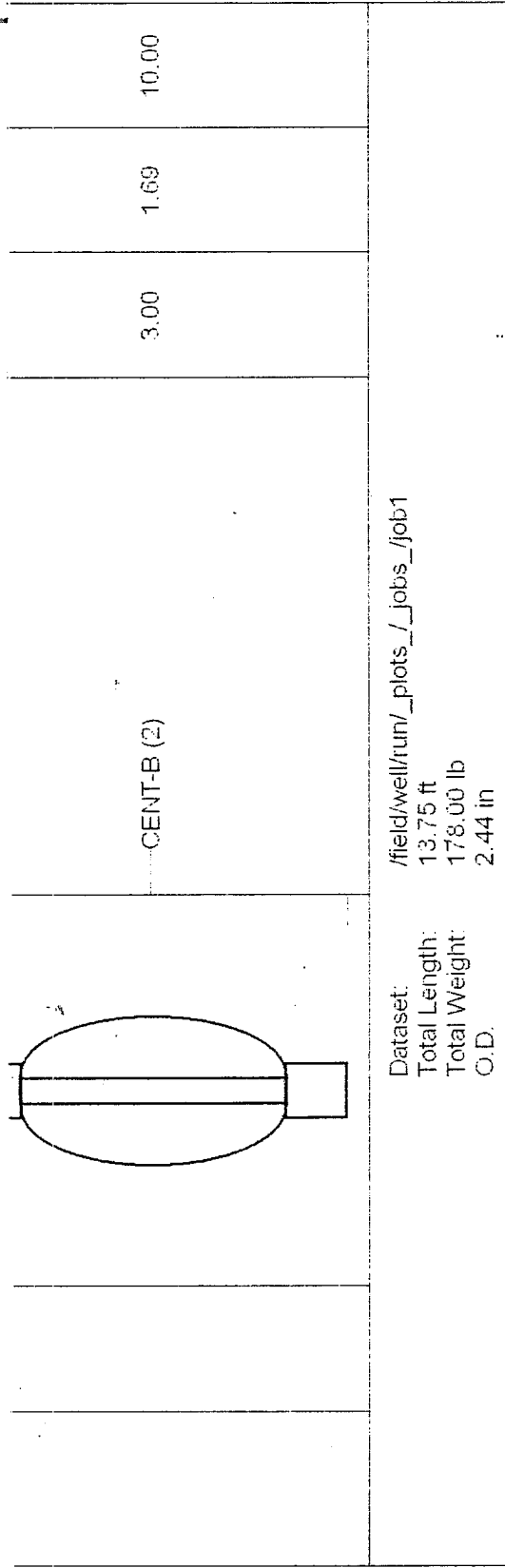
All interpretations are opinions based on inferences from electrical or other measurements and we cannot and do not guarantee the accuracy or correctness of any interpretation, and we shall not, except in the case of gross or willful negligence on our part, be liable or responsible for any loss, costs, damages, or expenses incurred or sustained by anyone resulting from any interpretation made by any of our officers, agents or employees. These interpretations are also subject to our general terms and conditions set out in our current Price Schedule.

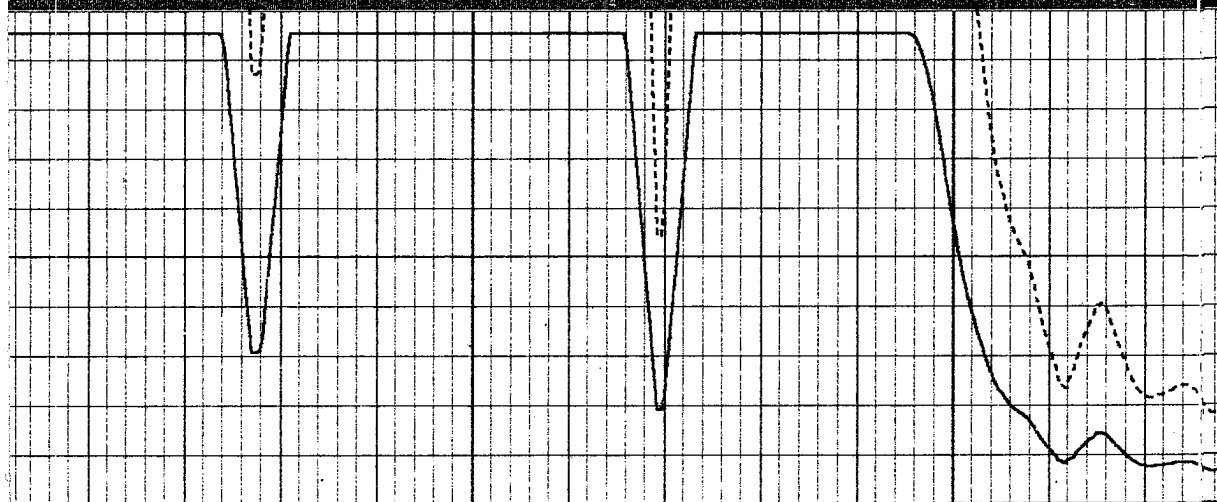
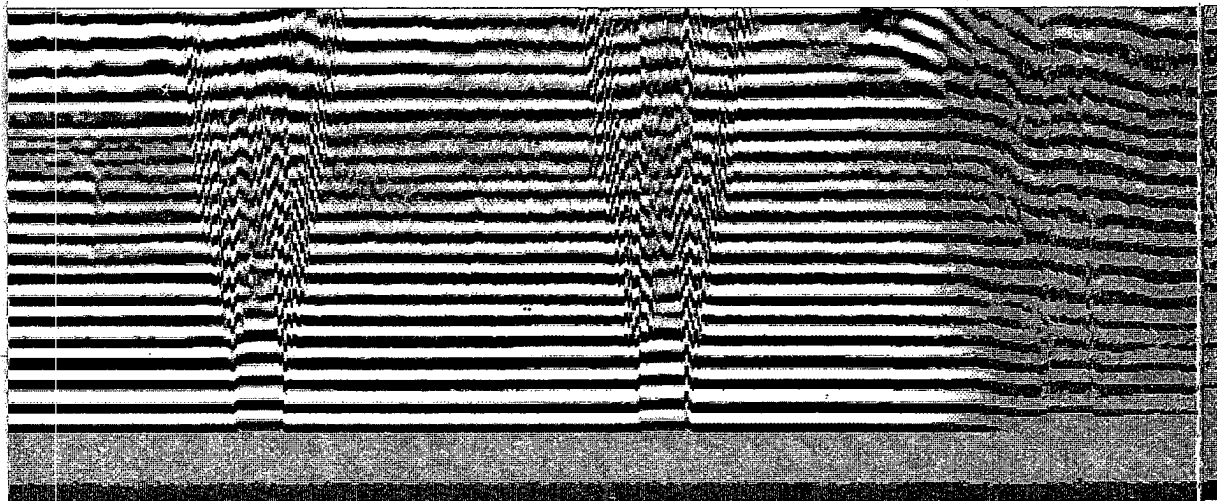
Comments

CORRECTED UP HOLE 5' OFF PSI
OPEN HOLE LOG 4-18-06

Sensor	Offset (ft)	Schematic	Description	Len (ft)	OD (in)	Wt (lb)
CCL	13.25		CCL-GR_1_3/8 (001) 1 3/8 titan ccl	1.00	1.38	11.00
GR	11.49		GR-s_t001 (t001)	2.52	1.69	30.00

WVF5	7.34	
WVF3	6.34	
<div data-bbox="284 1312 446 1375"></div> <div data-bbox="446 1312 1437 1375"> <div data-bbox="560 1312 1437 1375"> <div data-bbox="576 1312 609 1375">000</div> <div data-bbox="609 1312 641 1375">000</div> <div data-bbox="641 1312 673 1375">000</div> <div data-bbox="673 1312 706 1375">000</div> <div data-bbox="706 1312 738 1375">000</div> <div data-bbox="738 1312 771 1375">000</div> <div data-bbox="771 1312 803 1375">000</div> <div data-bbox="803 1312 836 1375">000</div> <div data-bbox="836 1312 868 1375">000</div> <div data-bbox="868 1312 901 1375">000</div> <div data-bbox="901 1312 933 1375">000</div> <div data-bbox="933 1312 966 1375">000</div> <div data-bbox="966 1312 998 1375">000</div> <div data-bbox="998 1312 1031 1375">000</div> <div data-bbox="1031 1312 1063 1375">000</div> <div data-bbox="1063 1312 1096 1375">000</div> <div data-bbox="1096 1312 1128 1375">000</div> <div data-bbox="1128 1312 1161 1375">000</div> <div data-bbox="1161 1312 1193 1375">000</div> <div data-bbox="1193 1312 1226 1375">000</div> <div data-bbox="1226 1312 1258 1375">000</div> <div data-bbox="1258 1312 1291 1375">000</div> <div data-bbox="1291 1312 1323 1375">000</div> <div data-bbox="1323 1312 1356 1375">000</div> <div data-bbox="1356 1312 1388 1375">000</div> <div data-bbox="1388 1312 1421 1375">000</div> <div data-bbox="1421 1312 1453 1375">000</div> </div> </div>	<div data-bbox="917 913 950 1102">---CBL-3_5 (001)</div>	
	7.23	
	2.44	
		127.00

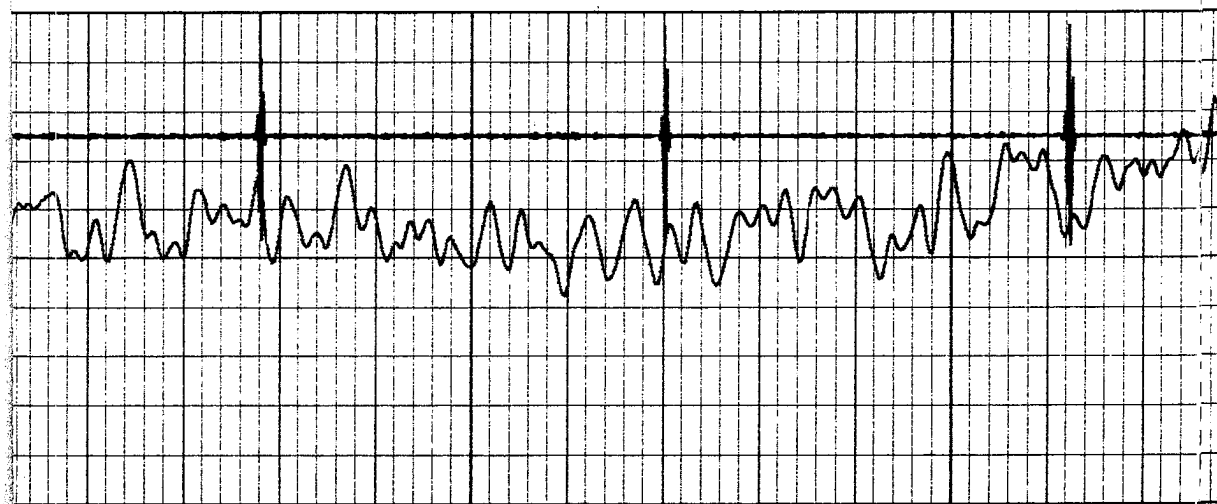


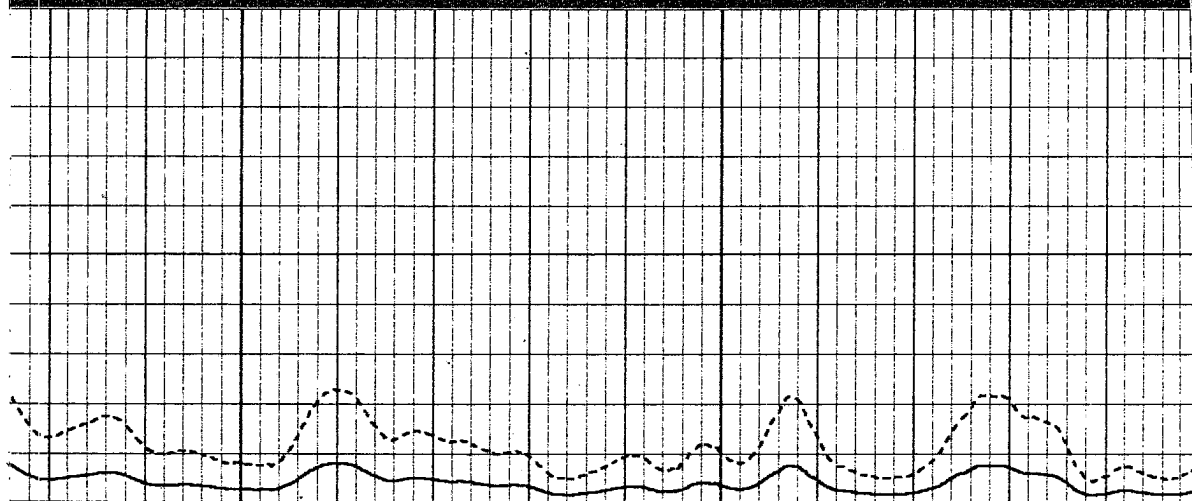
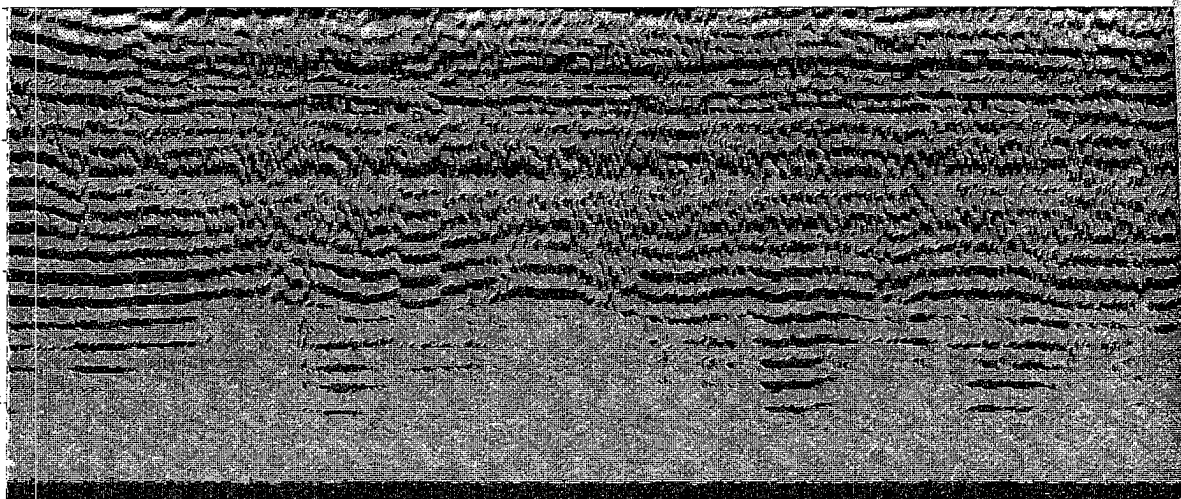


3A

3000

3050

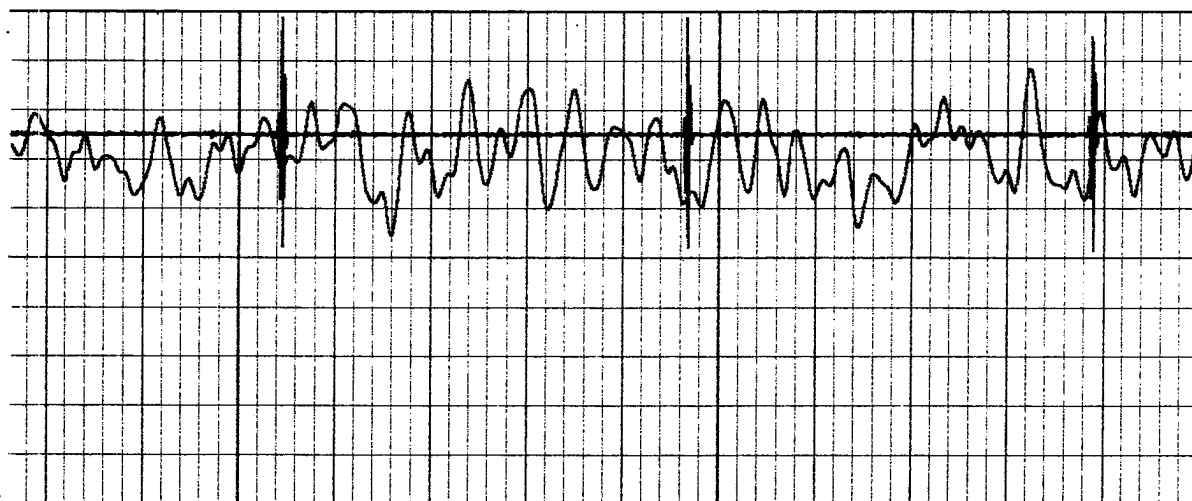


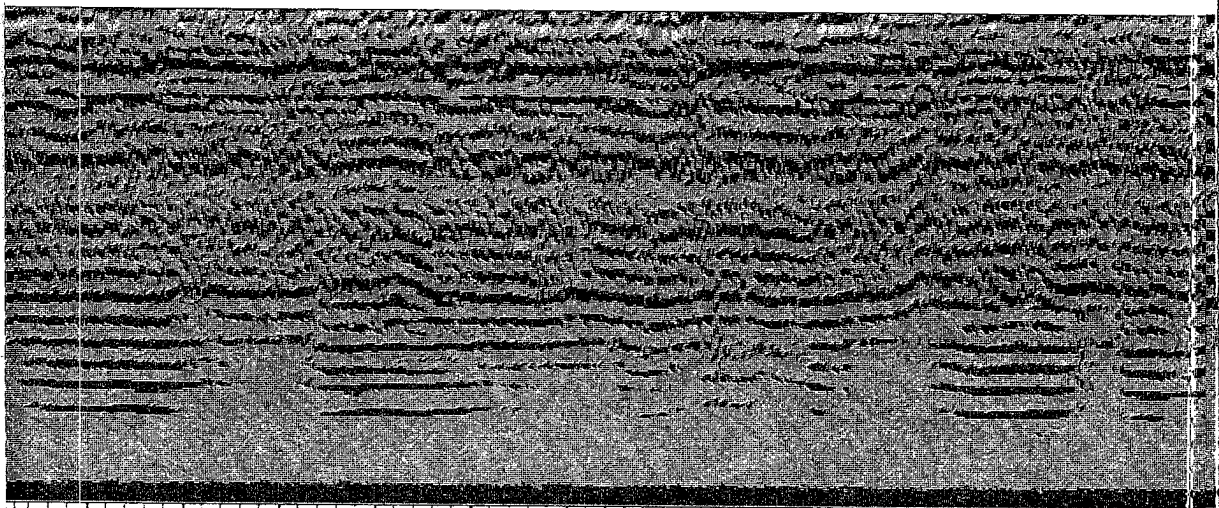


3100

3150

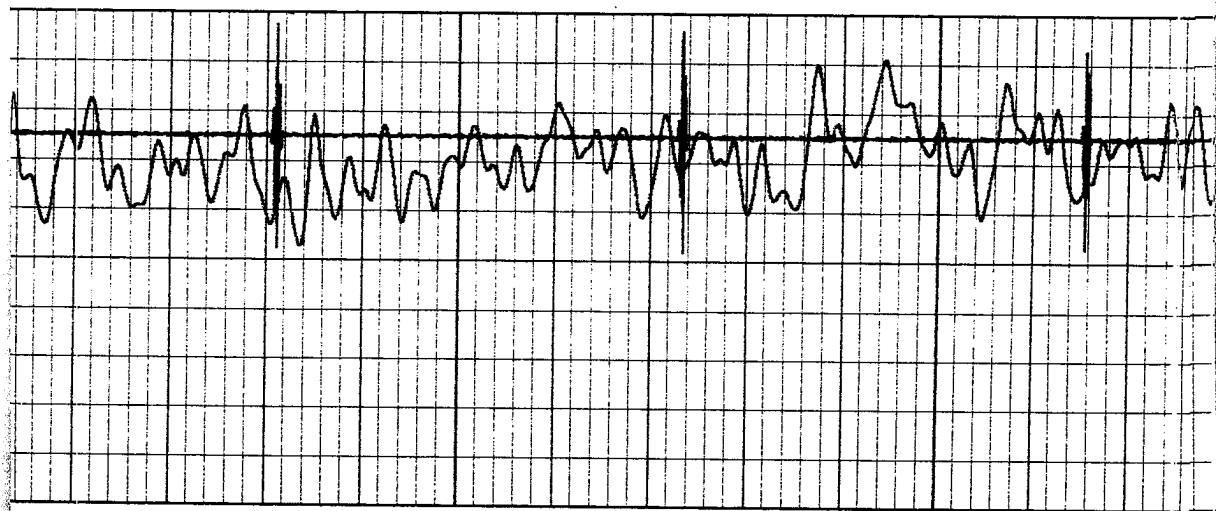
3200

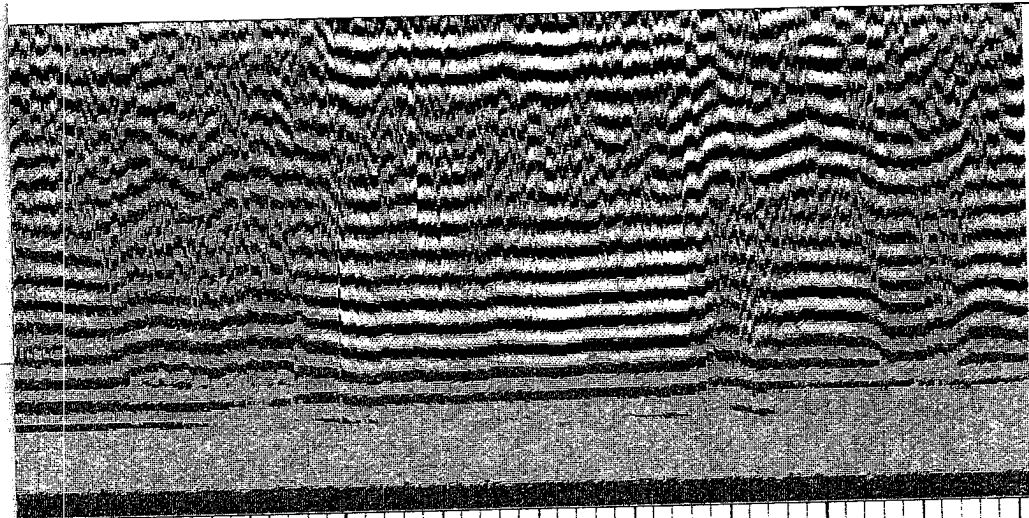




3250

3300





Variable Density 1200

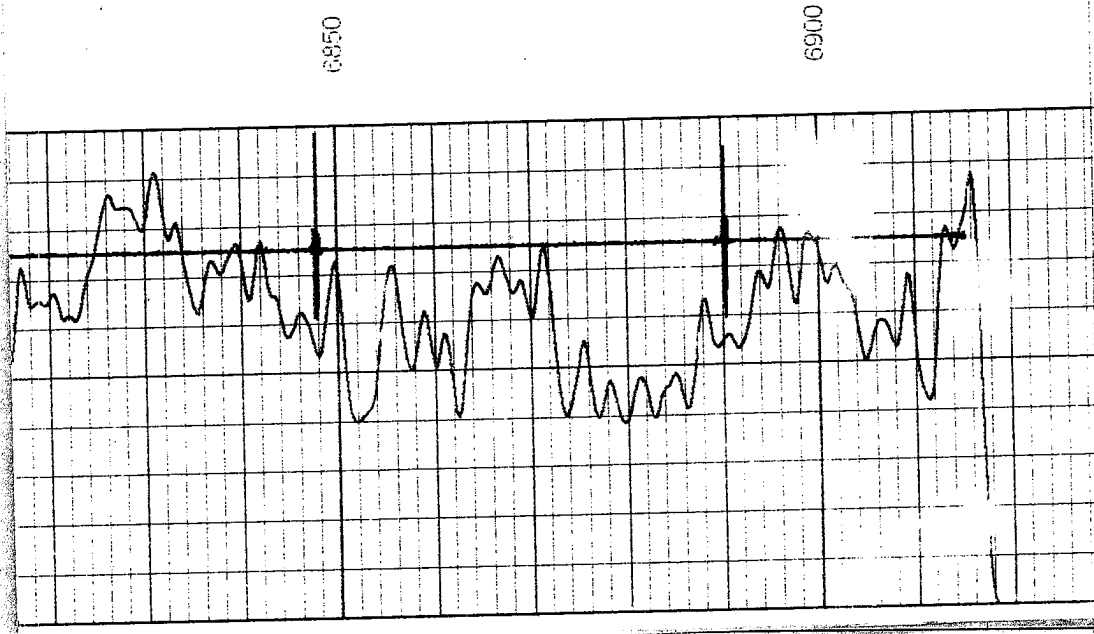
85 200



AMP3 (mV)

AMP3 (mV)

g/s

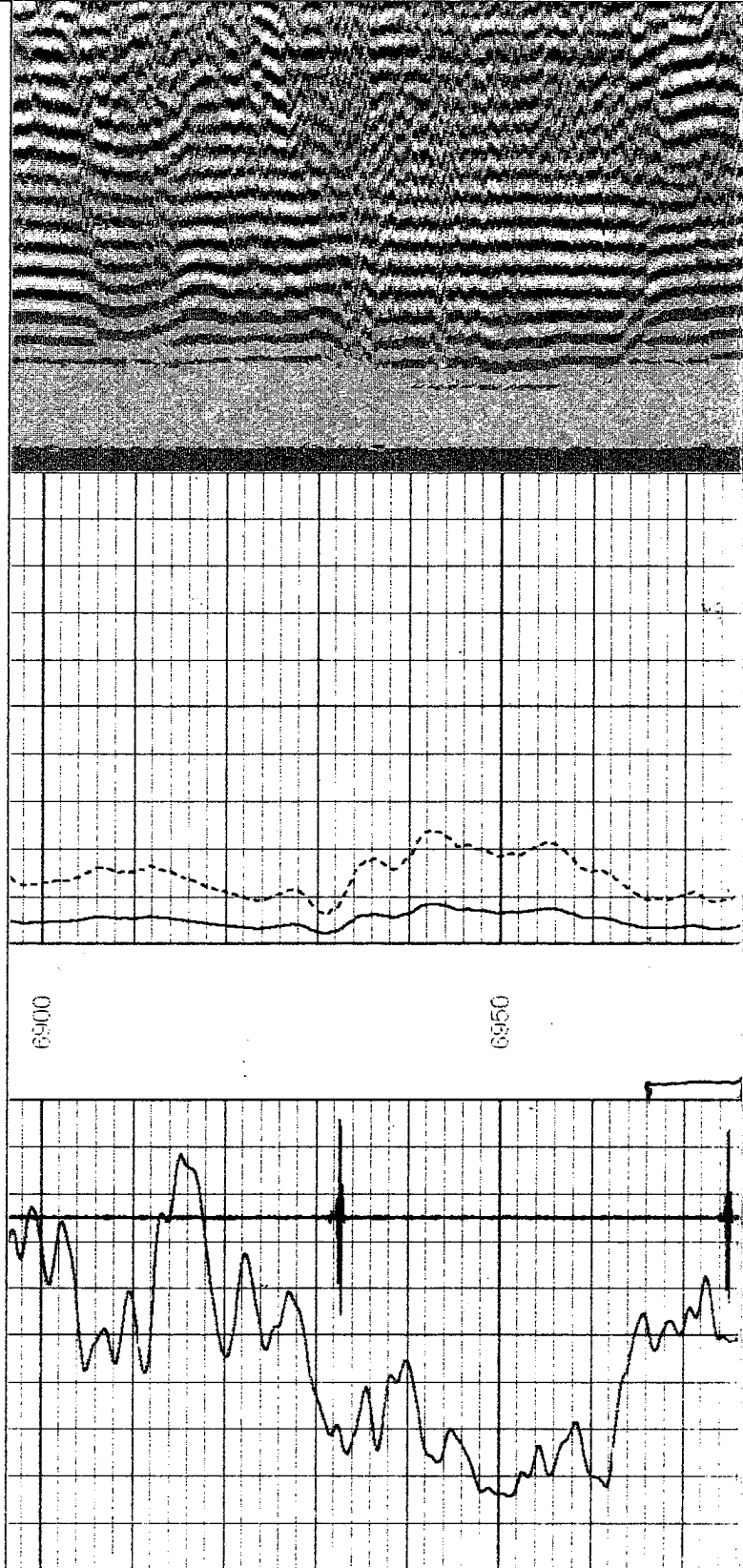


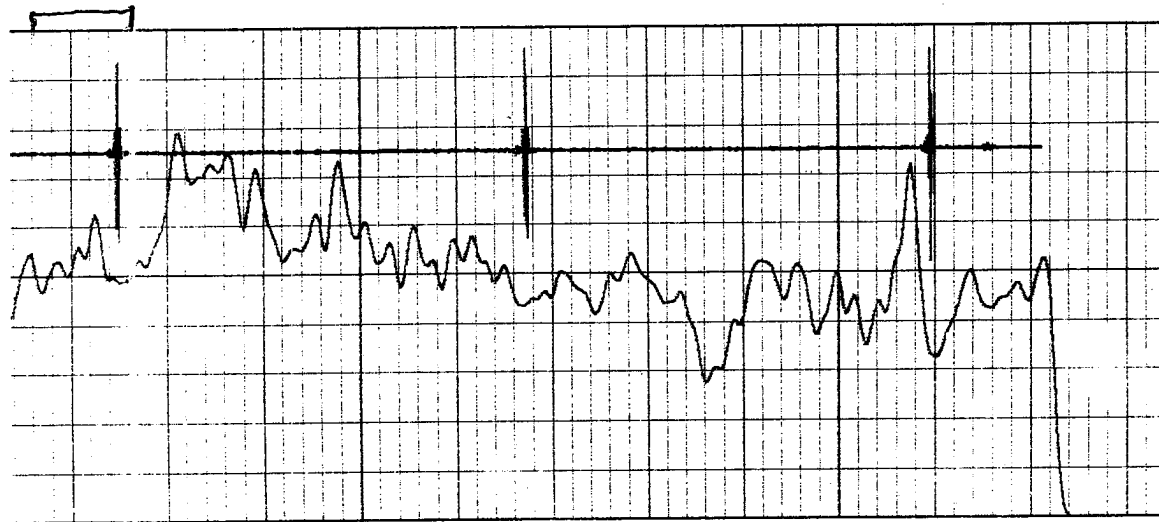
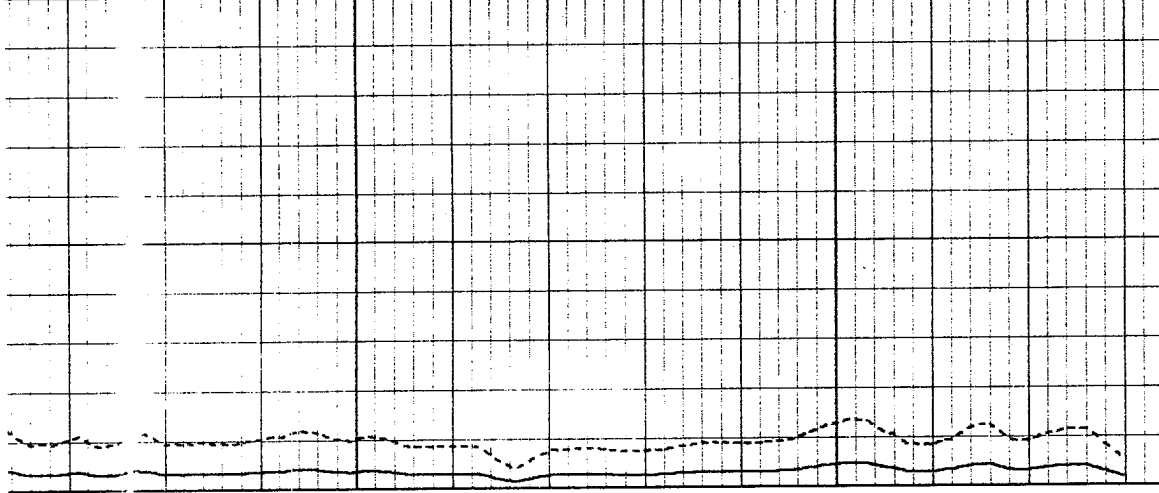
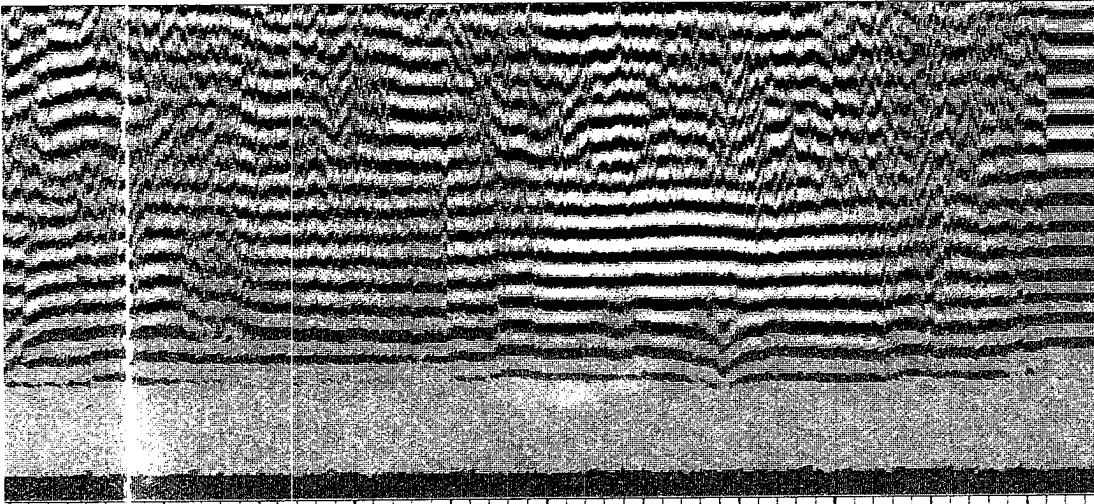
GR (GAP'I)

CCL

Database File: petroleum man.db
 Dataset Pathname: pass2
 Presentation Format: cbix
 Dataset Creation: Mon May 01 12:08:04 2006 by Log Warrior 7.0 STD Cas
 Charted by: Depth in Feet scaled 1:240

0	GR (GAPI)	175	0	AMP3 (mV)	85	200	Variable Density	1200
-9	CUL	3	0	AMP3 (mV)	30			





0	0	85	200	1200
-9	0	AMP3 (mV)	Variable Density	
CCL	30			
3				