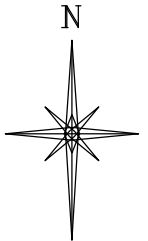
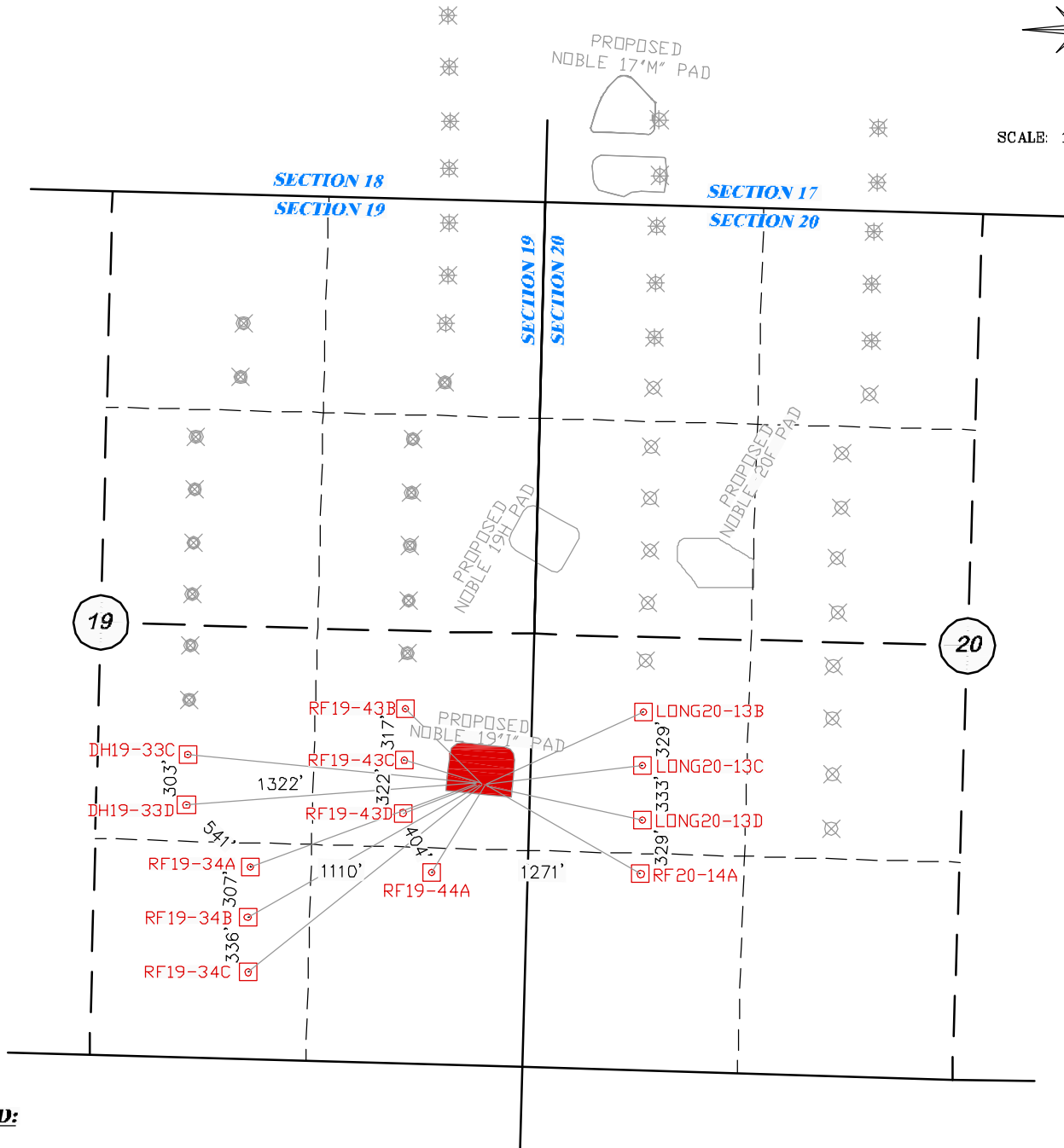


T7S



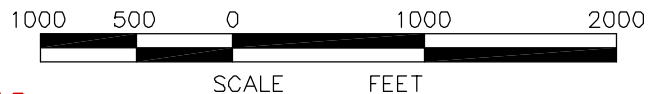
SCALE: 1" = 1000'



R 94 W

LEGEND:

- ✖ PROPOSED BOTTOM HOLE LOCATION FOR 17M PAD
- ✖ PROPOSED BOTTOM HOLE LOCATION FOR 19H PAD
- ✖ PROPOSED BOTTOM HOLE LOCATION FOR 20F PAD
- ☐ PROPOSED BOTTOM HOLE LOCATION FOR 19I PAD



19 "I" PAD



(307) 362-5028

RIFFIN & ASSOCIATES, INC.
1414 ELK ST., ROCK SPRINGS, WY 82901

DATE DRAWN: 9/22/08-RAB

SCALE: 1" = 1000'

REVISED: N/A

JOB No. 15569

EXHIBIT 4

MULTI-WELL PLAN

NOBLE ENERGY, INC.
RULISON FEDERAL 19-34A, 19-34B, 19-34C, 19-43B, 19-43C, 19-43D, 19-44A & 20-14A; DOGHEAD 19-33C & 19-33D; LONG 20-13B, 20-13C & 20-13D

NE 1/4 OF SE 1/4 OF SECTION 19
T. 7 S., R. 94 W., 6th P.M. GARFIELD COUNTY, COLORADO