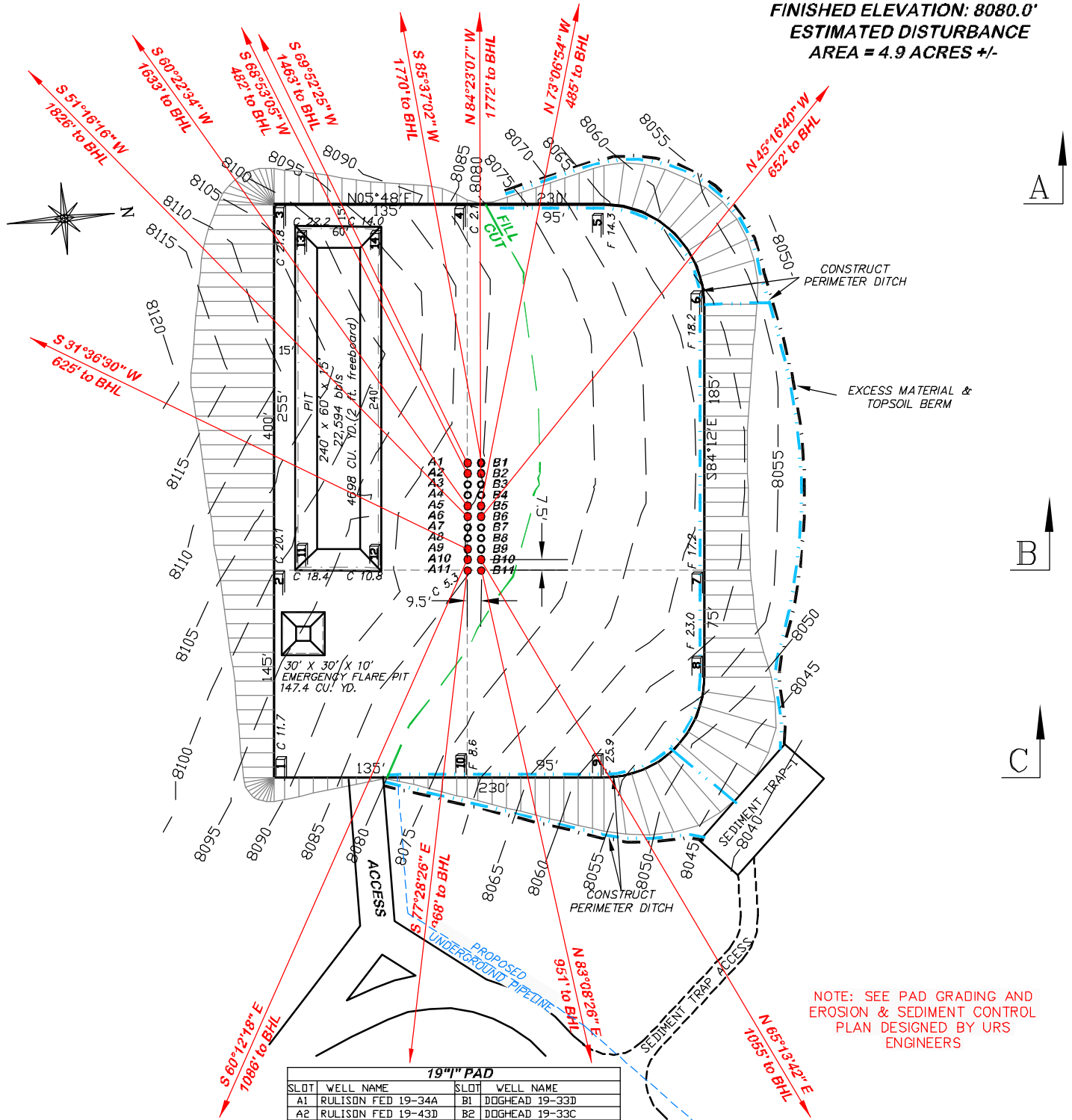


UNGRADED ELEVATION: 8085.3'
 FINISHED ELEVATION: 8080.0'
 ESTIMATED DISTURBANCE
 AREA = 4.9 ACRES +/-

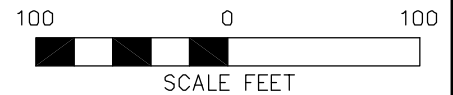


**BEFORE DIGGING
 CALL FOR
 UTILITY LINE LOCATION**

NOTE: THE EARTH QUANTITIES ON
 THIS DRAWING ARE ESTIMATED
 AND THE USE OF THIS IS AT THE
 RESPONSIBILITY OF THE USER.

19" I" PAD			
SLOT	WELL NAME	SLOT	WELL NAME
A1	RULISON FED 19-34A	B1	DOGHEAD 19-33D
A2	RULISON FED 19-43D	B2	DOGHEAD 19-33C
A3	OPEN	B3	OPEN
A4	OPEN	B4	OPEN
A5	RULISON FED 19-34B	B5	RULISON FED 19-43C
A6	RULISON FED 19-34C	B6	RULISON FED 19-43B
A7	OPEN	B7	OPEN
A8	OPEN	B8	OPEN
A9	RULISON FED 19-44A	B9	OPEN
A10	RULISON FED 20-14A	B10	LONG 20-13B
A11	LONG 20-13D	B11	LONG 20-13C

19" I" PAD



DRIFIN & ASSOCIATES, INC.
 1414 ELK ST., ROCK SPRINGS, WY 82901

(307) 362-5028

DRAWN: 9/29/08 - RAB
 REVISED DATE: 12/07/09-SJC
 REVISED TITLE BLOCK

SCALE: 1" = 100'
 DRG JOB No. 15569
 EXHIBIT 2

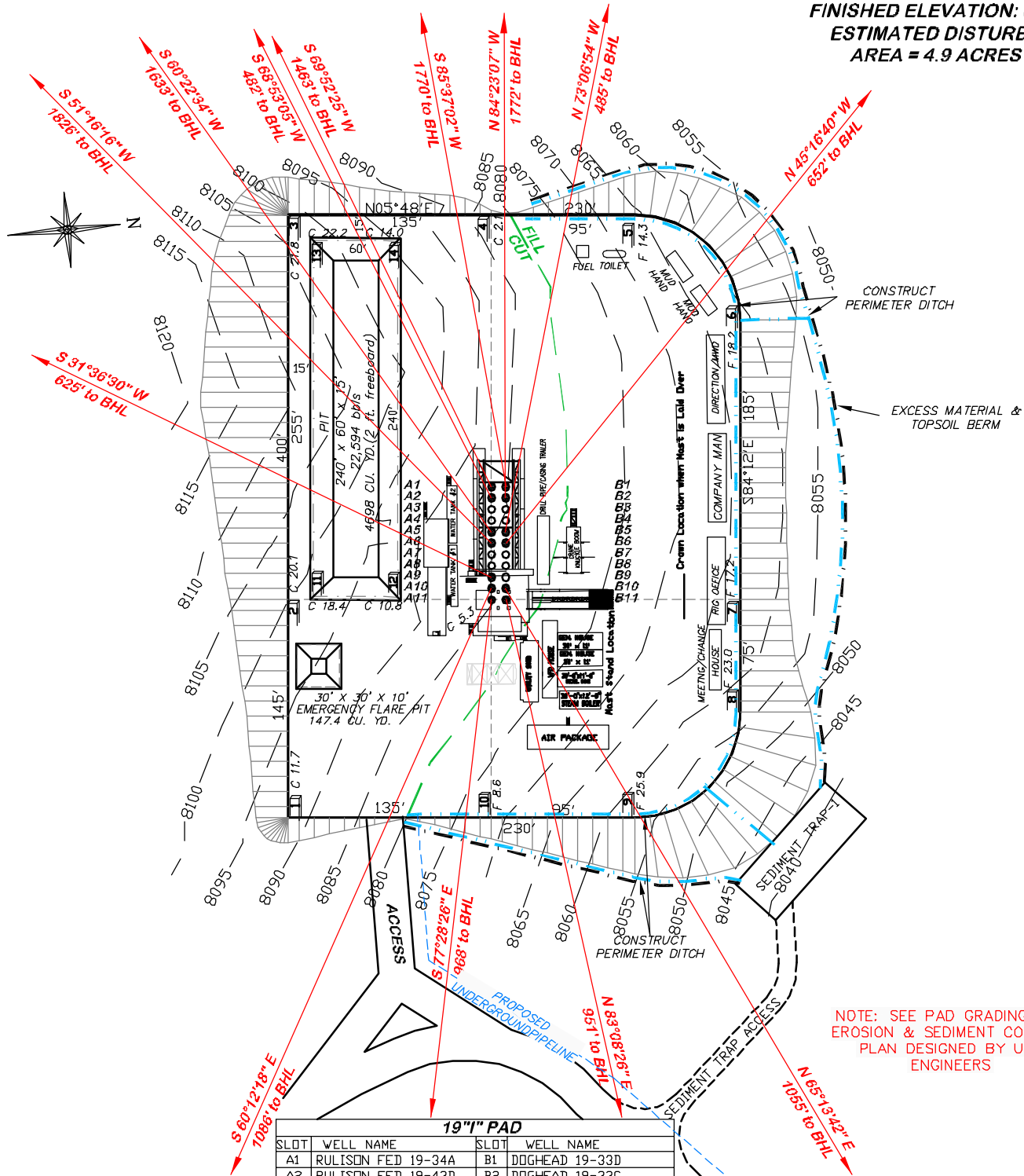
CONSTRUCTION LAYOUT DRAWING 1 OF 5

NOBLE ENERGY, INC. RULISON FEDERAL 19-34A, 19-34B, 19-34C, 19-43B, 19-43C, 19-43D, 19-44A & 20-14A; DOGHEAD 19-33C & 19-33D; LONG 20-13B, 20-13C & 20-13D
 NE 1/4 OF SE 1/4 OF SECTION 19., T. 7 S., R. 94 W., 6th P.M.,
 GARFIELD COUNTY, COLORADO

ESTIMATED EARTHWORK

ITEM	CUT	FILL	TOPSOIL	EXCESS
PAD	36312 CY	28987 CY	6190 CY	1135 CY
PIT	5750 CY			5750 CY
TOTALS	42062 CY	28987 CY	6190 CY	6885 CY

UNGRADED ELEVATION: 8085.3'
 FINISHED ELEVATION: 8080.0'
 ESTIMATED DISTURBANCE
 AREA = 4.9 ACRES +/-



NOTE: SEE PAD GRADING AND
 EROSION & SEDIMENT CONTROL
 PLAN DESIGNED BY URS
 ENGINEERS

**BEFORE DIGGING
 CALL FOR
 UTILITY LINE LOCATION**

NOTE: THE EARTH QUANTITIES ON
 THIS DRAWING ARE ESTIMATED
 AND THE USE OF THIS IS AT THE
 RESPONSIBILITY OF THE USER.

19" I" PAD			
SLOT	WELL NAME	SLOT	WELL NAME
A1	RULISON FED 19-34A	B1	DOGHEAD 19-33D
A2	RULISON FED 19-43D	B2	DOGHEAD 19-33C
A3	OPEN	B3	OPEN
A4	OPEN	B4	OPEN
A5	RULISON FED 19-34B	B5	RULISON FED 19-43C
A6	RULISON FED 19-34C	B6	RULISON FED 19-43B
A7	OPEN	B7	OPEN
A8	OPEN	B8	OPEN
A9	RULISON FED 19-44A	B9	OPEN
A10	RULISON FED 20-14A	B10	LONG 20-13B
A11	LONG 20-13D	B11	LONG 20-13C

19" I" PAD

100 0 100
 SCALE FEET



DRIFIN & ASSOCIATES, INC.
 1414 ELK ST., ROCK SPRINGS, WY 82901

(307) 362-5028

DRAWN: 9/29/08 - RAB

SCALE: 1" = 100'

REVISED DATE: 12/07/09-SJC

DRG JOB No. 15455

REVISED TITLE BLOCK

EXHIBIT 2A

CONSTRUCTION LAYOUT DRAWING 2 OF 5

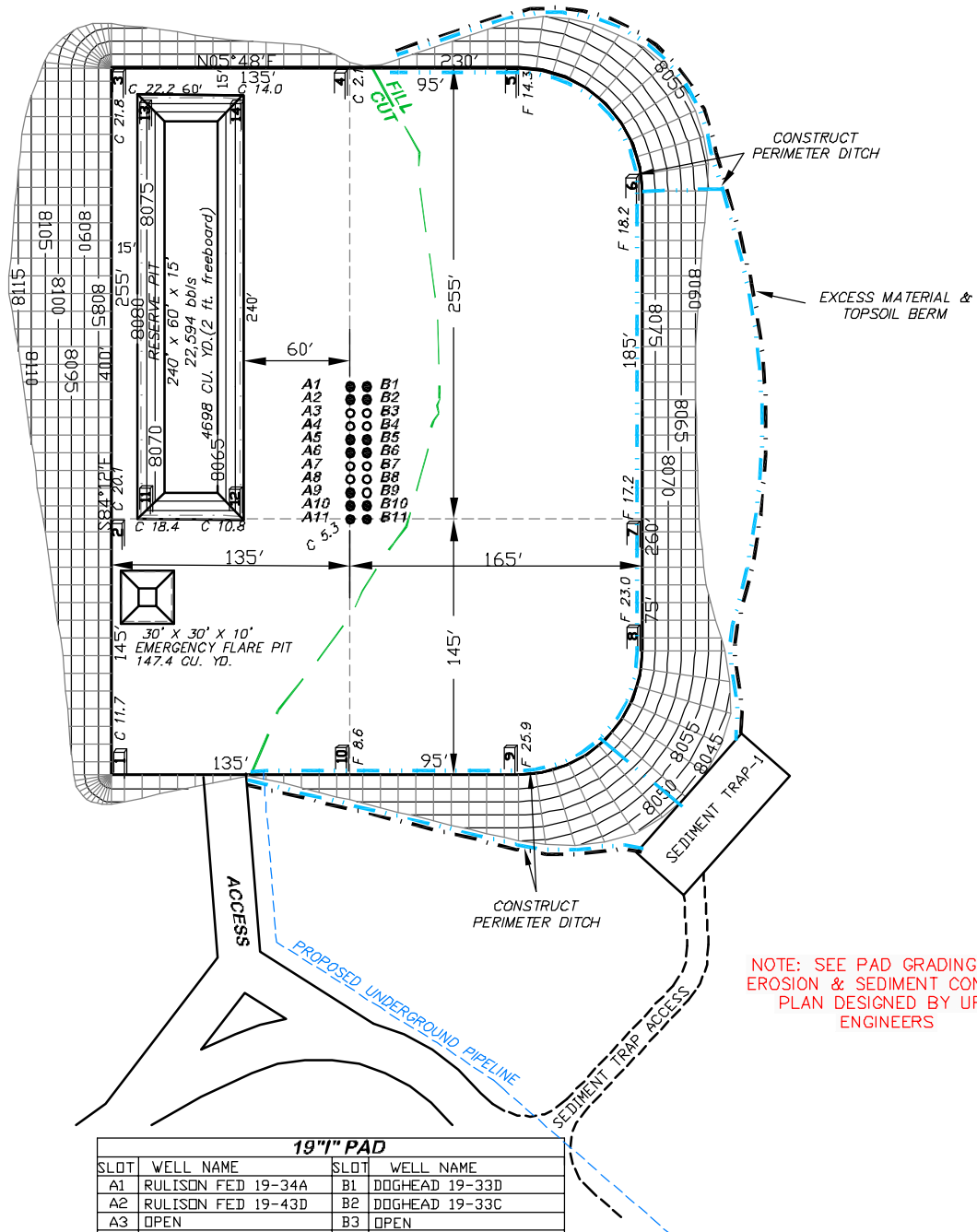
NOBLE ENERGY, INC.

**RULISON FEDERAL 19-34A, 19-34B, 19-34C, 19-43B,
 19-43C, 19-43D, 19-44A & 20-14A; DOGHEAD 19-33C &
 19-33D; LONG 20-13B, 20-13C & 20-13D**

**NE 1/4 OF SE 1/4 OF SECTION 19, T. 7 S., R. 94 W., 6th P.M.
 GARFIELD COUNTY, COLORADO**

DESIGN CONTOURS

UNGRADED ELEVATION: 8085.3'
FINISHED ELEVATION: 8080.0'
ESTIMATED DISTURBANCE
AREA = 4.9 ACRES +/-



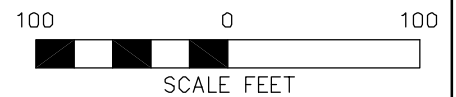
NOTE: SEE PAD GRADING AND
EROSION & SEDIMENT CONTROL
PLAN DESIGNED BY URS
ENGINEERS

**BEFORE DIGGING
CALL FOR
UTILITY LINE LOCATION**

NOTE: THE EARTH QUANTITIES ON
THIS DRAWING ARE ESTIMATED
AND THE USE OF THIS IS AT THE
RESPONSIBILITY OF THE USER.

19" I" PAD			
SLOT	WELL NAME	SLOT	WELL NAME
A1	RULISON FED 19-34A	B1	DOGHEAD 19-33D
A2	RULISON FED 19-43D	B2	DOGHEAD 19-33C
A3	OPEN	B3	OPEN
A4	OPEN	B4	OPEN
A5	RULISON FED 19-34B	B5	RULISON FED 19-43C
A6	RULISON FED 19-34C	B6	RULISON FED 19-43B
A7	OPEN	B7	OPEN
A8	OPEN	B8	OPEN
A9	RULISON FED 19-44A	B9	OPEN
A10	RULISON FED 20-14A	B10	LONG 20-13B
A11	LONG 20-13D	B11	LONG 20-13C

19" I" PAD



(307) 362-5028

1414 ELK ST., ROCK SPRINGS, WY 82901

DRAWN: 9/29/08 - RCR

SCALE: 1" = 100'

REVISED DATE: 12/07/09-SJC

DRG JOB No. 15569

REVISED TITLE BLOCK

EXHIBIT 2B

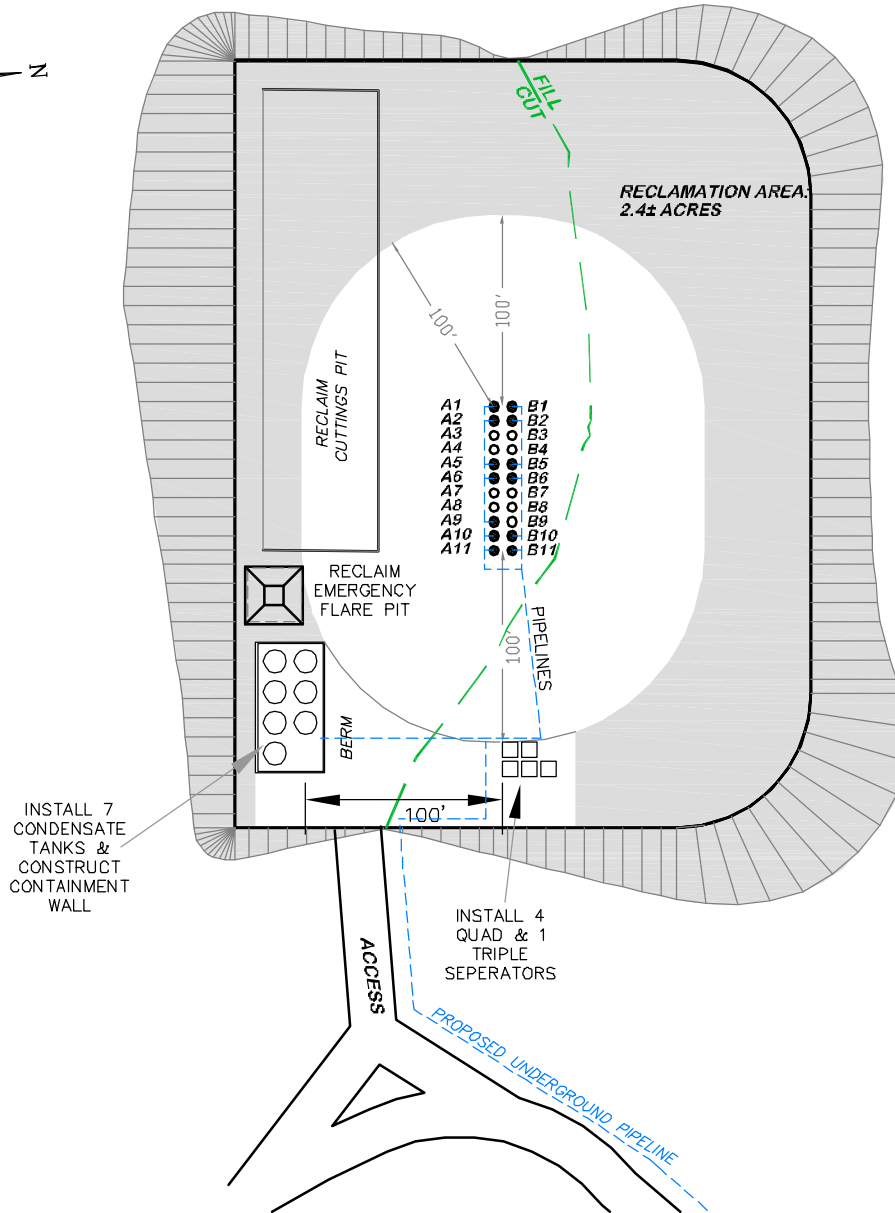
CONSTRUCTION LAYOUT DRAWING 3 OF 5

**NOBLE ENERGY, INC. - DESIGN CONTOURS
RULISON FEDERAL 19-34A, 19-34B, 19-34C, 19-43B,
19-43C, 19-43D, 19-44A & 20-14A; DOGHEAD 19-33C &
19-33D; LONG 20-13B, 20-13C & 20-13D**

NE 1/4 OF SE 1/4 OF SECTION 19, T. 7 S., R. 94 W., 6th P.M.
GARFIELD COUNTY, COLORADO

RECLAMATION PLAN

UNGRADED ELEVATION: 8085.3'
FINISHED ELEVATION: 8080.0'
ESTIMATED DISTURBANCE
AREA = 4.9 ACRES +/-

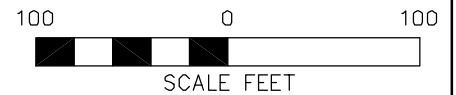


**BEFORE DIGGING
CALL FOR
UTILITY LINE LOCATION**

NOTE: THE EARTH QUANTITIES ON
THIS DRAWING ARE ESTIMATED
AND THE USE OF THIS IS AT THE
RESPONSIBILITY OF THE USER.

19" I" PAD			
SLOT	WELL NAME	SLOT	WELL NAME
A1	RULISON FED 19-34A	B1	DOGHEAD 19-33D
A2	RULISON FED 19-43D	B2	DOGHEAD 19-33C
A3	OPEN	B3	OPEN
A4	OPEN	B4	OPEN
A5	RULISON FED 19-34B	B5	RULISON FED 19-43C
A6	RULISON FED 19-34C	B6	RULISON FED 19-43B
A7	OPEN	B7	OPEN
A8	OPEN	B8	OPEN
A9	RULISON FED 19-44A	B9	OPEN
A10	RULISON FED 20-14A	B10	LONG 20-13B
A11	LONG 20-13D	B11	LONG 20-13C

19" I" PAD



(307) 362-5028

1414 ELK ST., ROCK SPRINGS, WY 82901

DRAWN: 9/29/08 - RCR

SCALE: 1" = 100'

REVISED DATE: 12/07/09-SJC

DRG JOB No. 15569

REVISED TITLE BLOCK

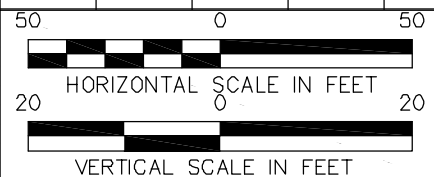
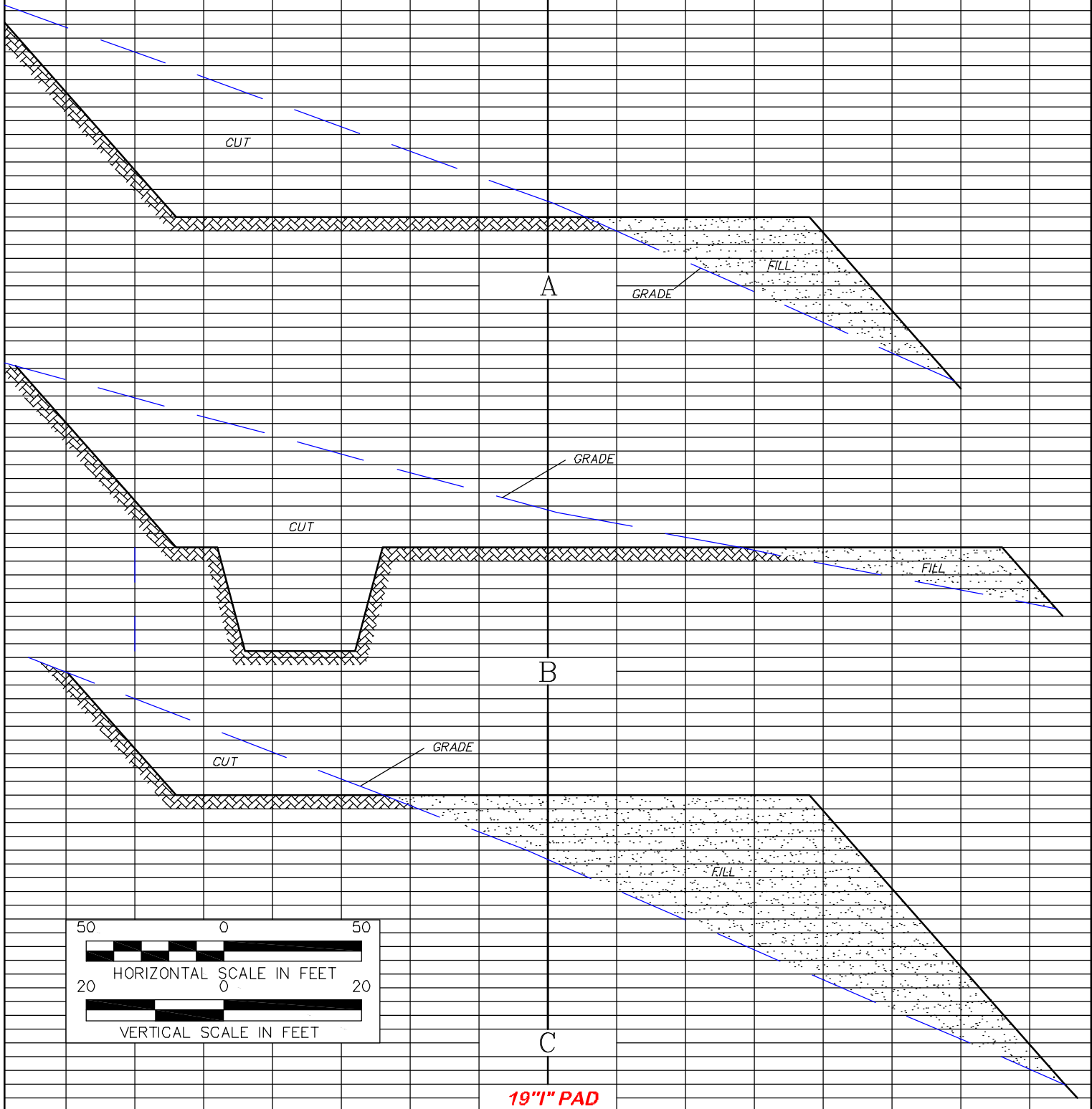
EXHIBIT 2C

CONSTRUCTION LAYOUT DRAWING 4 OF 5

**NOBLE ENERGY, INC. - RECLAMATION PLAN
RULISON FEDERAL 19-34A, 19-34B, 19-34C, 19-43B,
19-43C, 19-43D, 19-44A & 20-14A; DOGHEAD 19-33C &
19-33D; LONG 20-13B, 20-13C & 20-13D**

NE 1/4 OF SE 1/4 OF SECTION 19, T. 7 S., R. 94 W., 6th P.M.
GARFIELD COUNTY, COLORADO

UNGRADED ELEVATION: 8085.3'
FINISHED ELEVATION: 8080.0'



RIFFIN & ASSOCIATES, INC.
1414 ELK ST., ROCK SPRINGS, WY 82901

(307) 362-5028

DRAWN: 9/29/08 - RAB

HORZ. 1" = 50' VERT. 1" = 20'

REVISED DATE: 12/03/09-SJC

DRG JOB No.15455

REVISED TITLE BLOCK

EXHIBIT 3

CONSTRUCTION LAYOUT 5 OF 5

NOBLE ENERGY, INC.

**RULISON FEDERAL 19-34A, 19-34B, 19-34C, 19-43B,
19-43C, 19-43D, 19-44A & 20-14A; DOGHEAD 19-33C
& 19-33D; LONG 20-13B, 20-13C & 20-13D**

**NE 1/4 OF SE 1/4 OF SECTION 19, T. 7 S., R. 94 W., 6th P.M.
GARFIELD COUNTY, COLORADO**