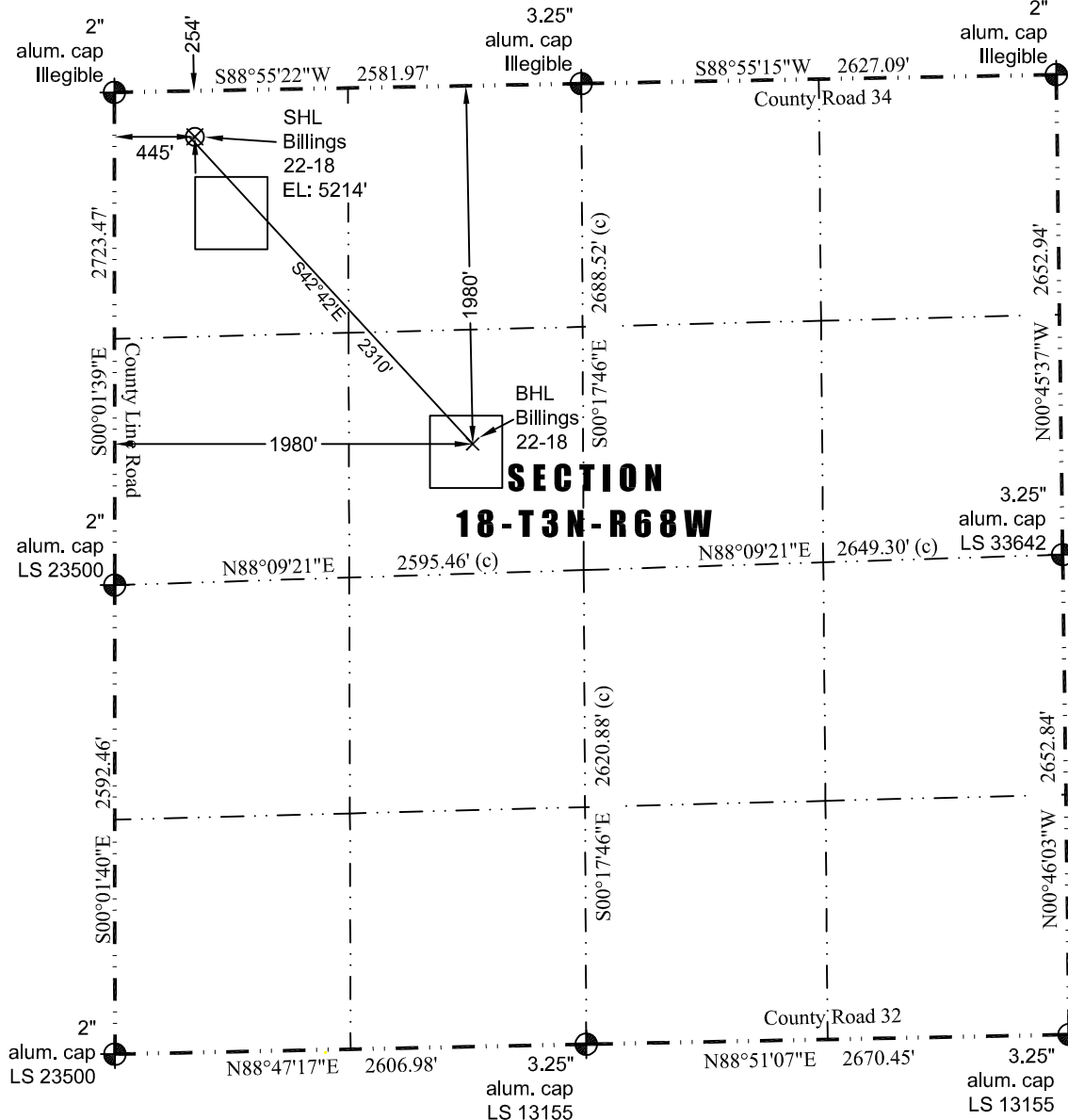


# JR Land Surveying, LLC

8114 Northstar Drive  
Windsor, Colorado 80528  
P. 970-576-4641

## WELL LOCATION CERTIFICATE

THIS MAP DOES NOT REPRESENT A BOUNDARY SURVEY



Scale 1" = 1000'  
1000  
approximate scale

LEGEND  
— found survey monument  
— calculated dimension

In accordance with a request from Jay Knutson of EnCana Oil & Gas (USA) Inc., JR Land Surveying, LLC has determined the location of the **Billings 22-18** well site to be SHL: 254' FNL and 445' FWL, (BHL: 1980' FNL and 1980' FWL) as measured at ninety (90) degrees from the section lines of Section 18, Township 3 North, Range 68 West, 6th Principal Meridian, County of Weld, CO.

### Proposed Surface Hole Data:

Latitude: N 40.23210° (BHL: 40.22742°)  
Longitude: W 105.05350° (BHL: 105.04803°)  
PDOP: 1.5

### Nearest:

Building: 413' north	Above Ground Utility: 426' northwest
Public Road: 241' north	Railroad: 8,424' northwest
Property Line: 254' north	Well Window: SHL is 221' outside
Existing Well: Pedicord #1, 2,290' northwest	

### Notes:

- 1) Bearings and distances based on NAD 83 Colorado North State Plane Coordinates using RTK GPS observations taken 8/16/12 by operator John Rice.
- 2) Conversion factor to ground (1.000286833).
- 3) Elevations based on NAVD 88 GPS heights and Geoid 2003 corrections.
- 4) See Location Drawing for visible improvements within 400 of pad site.
- 5) The surface use is a cultivated field.

**NOTICE:** According to Colorado law you MUST commence any legal action based upon any defect in this W.L.C. within three years after you first discover such defect. In no event may any action based upon any defect in this W.L.C. be commenced more than ten years from this said date of the certification shown hereon.

I hereby certify that this Well Location Certificate was prepared by me or under my direct supervision on 11/19/2012 for and on behalf of EnCana Oil & Gas (USA) Inc. That it is not a Land Survey Plat or an Improvement Survey Plat and that it is not to be relied upon for establishment of fences, buildings, or other future improvement lines.

John Robert McGehee LS#38219  
Well: Billings 22-18 WLC