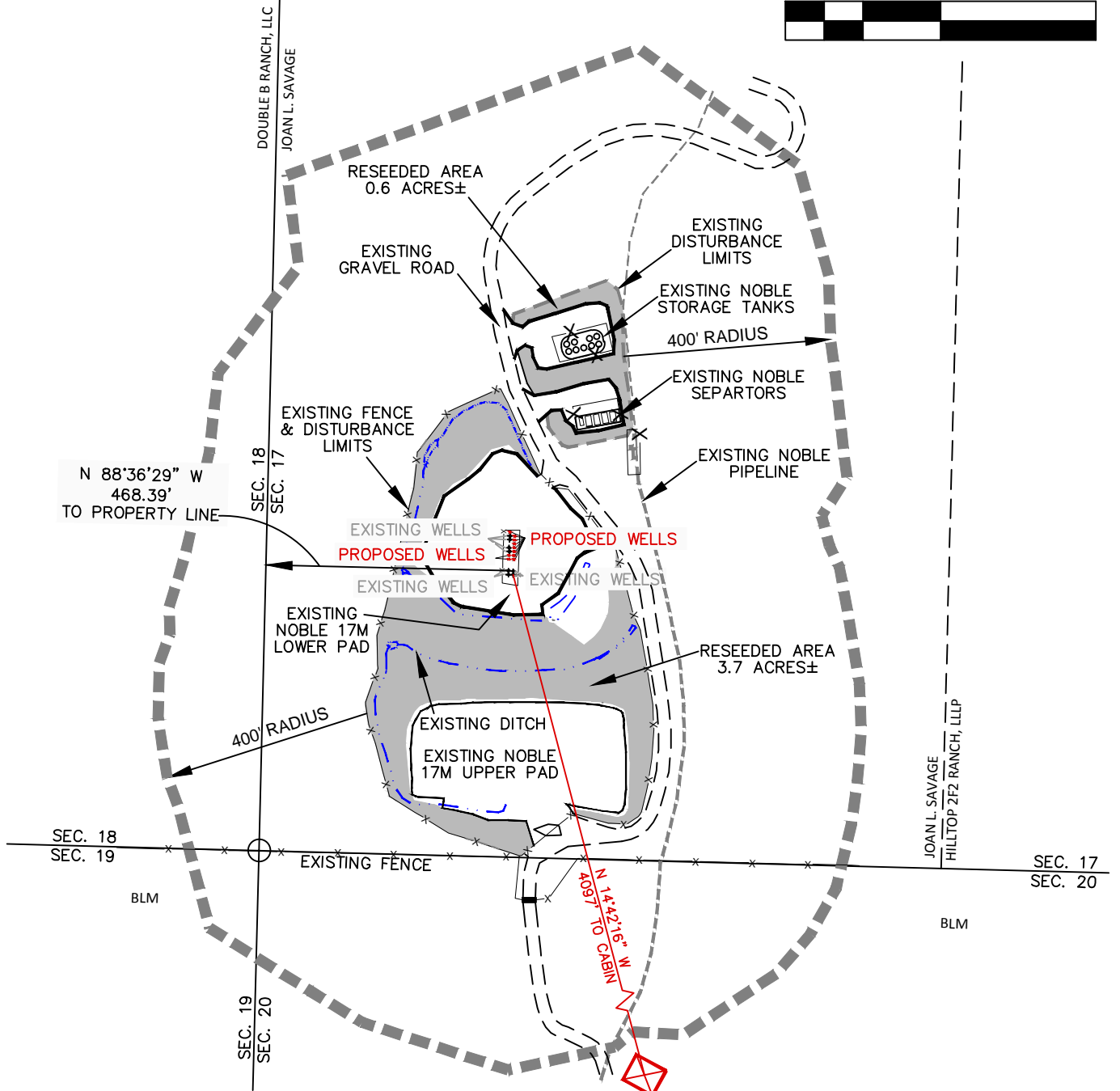




SCALE: 1" = 300'



CONFIDENTIALITY NOTES:

The information contained in this plat is legally privileged and confidential information intended only for the use of the recipients. If you are not the intended recipients, you are hereby notified that any use, dissemination, distribution or copying of this information is strictly prohibited.

17M PAD



WILLIAM H. SMITH & ASSOCIATES P.C.
SURVEYING CONSULTANTS

550 EAST SECOND NORTH PHONE: 307-875-3638
GREEN RIVER, WY 307-875-3639

www.whsmithpc.com

JOB NO: 2011900.004

DATE DRAWN - BY: 6/18/12-rcr

REVISIONS:

SCALE: 1" = 300'

EXHIBIT 2

PAGE 1 OF 1

LOCATION DRAWING

NOBLE ENERGY, INC -IMPROVEMENTS WITHIN 400' RADIUS

RULISON FEDERAL 17-14C, 17-14D, 19-41A, 19-41B,
20-21A, 20-21B, 20-21C AND JONES 17-24C, 17-24D
SW4SW4, SECTION 17, T. 7 S., R. 94 W., 6TH P.M.
GARFIELD COUNTY, COLORADO