

Condor Energy, Weld County, CO

Well Name: **Waves 2H**

Surface Location: Waves 2H Pad Sec.18-T7N-R59W
North American Datum 1983 , US State Plane 1983 , Colorado Northern Zone

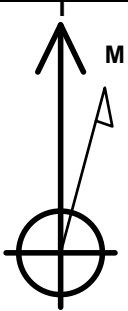
Ground Elevation: 4887.3

+N/-S	+E/-W	Northing	Easting	Latitude	Longitude	Slot
0.0	0.0	1453420.18	3408283.51	40.568750	-104.030320	

RKB - 12.5' WELL @ 4899.8ft (RKB - 12.5')

WELLBORE TARGET DETAILS

Name	TVD	+N/-S	+E/-W	Shape
HARDLINE 600' BHL	1.0	3232.3	4491.3	Polygon
HARDLINE 600' SHL	1.0	324.3	291.7	Polygon
SECTION LINE 274'S & 313'W of SHL	1.0	-274.0	-313.0	Polygon
SHL 274'FSL & 313'FWL	1.0	0.0	0.0	Point
BHL 1550'FNL & 680'FEL	6134.0	3432.3	4411.3	Point
Landing Point 640'FSL & 650'FWL	6145.0	364.3	341.7	Point



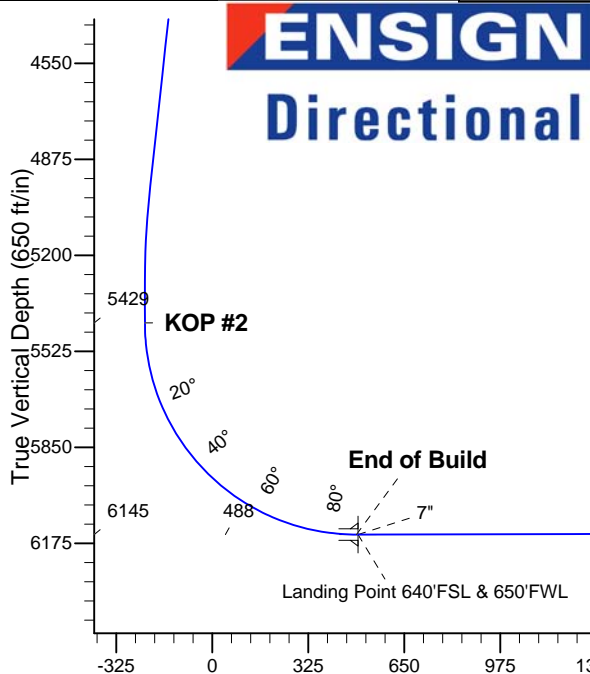
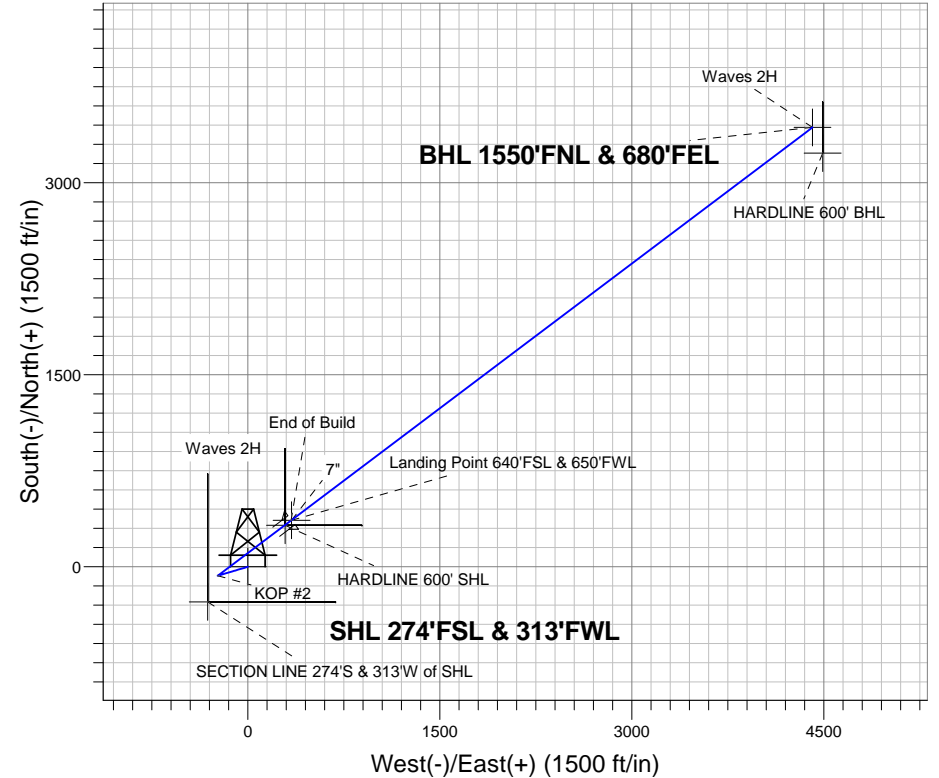
Azimuths to True North
Magnetic North: 8.30°

Magnetic Field
Strength: 53154.2nT
Dip Angle: 67.26°
Date: 10/16/2012
Model: IGRF2010

Waves 2H Pad Sec.18-T7N-R59W
Waves 2H
Plan #3 (12-10-12)
11:26, December 10 2012

ANNOTATIONS

TVD	MD	Annotation
2700.0	2700.0	KOP #1
5428.8	5441.9	KOP #2
6145.0	6566.9	End of Build



SECTION DETAILS

Sec	MD	Inc	Azi	TVD	+N/-S	+E/-W	DLeg	TFace	VSec	Target
1	0.0	0.00	0.00	0.0	0.0	0.0	0.00	0.00	0.0	
2	2700.0	0.00	0.00	2700.0	0.0	0.0	0.00	0.00	0.0	
3	3364.0	6.64	253.37	3362.5	-11.0	-36.8	1.00	253.37	-35.8	
4	4981.1	6.64	253.37	4968.7	-64.5	-216.0	0.00	0.00	-210.1	
5	5313.1	0.00	0.00	5300.0	-70.0	-234.4	2.00	180.00	-228.0	
6	5441.9	0.00	0.00	5428.8	-70.0	-234.4	0.00	0.00	-228.0	
7	6566.9	90.00	52.99	6145.0	361.1	337.5	8.00	52.99	488.1	
8	6572.2	90.00	52.99	6145.0	364.3	341.7	0.00	0.00	493.4	Landing Point 640'FSL & 650'FWL
9	6578.4	90.12	52.99	6145.0	368.1	346.7	2.00	0.23	499.6	
10	11668.6	90.12	52.99	6134.0	3432.3	4411.3	0.00	0.00	5589.3	BHL 1550'FNL & 680'FEL



Condor Energy, Weld County, CO

SEC.18-T7N-R59W

Waves 2H Pad Sec.18-T7N-R59W

Waves 2H

Wellbore #1

Plan: Plan #3 (12-10-12)

Standard Planning Report

10 December, 2012

Database:	Landmark	Local Co-ordinate Reference:	Well Waves 2H
Company:	Condor Energy, Weld County, CO	TVD Reference:	WELL @ 4899.8ft (RKB - 12.5')
Project:	SEC.18-T7N-R59W	MD Reference:	WELL @ 4899.8ft (RKB - 12.5')
Site:	Waves 2H Pad Sec.18-T7N-R59W	North Reference:	True
Well:	Waves 2H	Survey Calculation Method:	Minimum Curvature
Wellbore:	Wellbore #1		
Design:	Plan #3 (12-10-12)		

Project	SEC.18-T7N-R59W, Weld County, CO		
Map System:	US State Plane 1983	System Datum:	Mean Sea Level
Geo Datum:	North American Datum 1983		Using Well Reference Point
Map Zone:	Colorado Northern Zone		Using geodetic scale factor

Site		Waves 2H Pad Sec.18-T7N-R59W			
Site Position:		Northing:	1,453,420.20ft	Latitude:	40.568750
From:	Lat/Long	Easting:	3,408,283.51 ft	Longitude:	-104.030320
Position Uncertainty:	0.0 ft	Slot Radius:	"	Grid Convergence:	0.95 °

Well	Waves 2H					
Well Position	+N/-S	0.0 ft	Northing:	1,453,420.18 ft	Latitude:	40.568750
	+E/-W	0.0 ft	Easting:	3,408,283.51 ft	Longitude:	-104.030320
Position Uncertainty		0.0 ft	Wellhead Elevation:	ft	Ground Level:	4,887.3 ft

Wellbore	Wellbore #1				
Magnetics	Model Name	Sample Date	Declination (°)	Dip Angle (°)	Field Strength (nT)
	IGRF2010	10/16/2012	8.30	67.26	53,154

Design	Plan #3 (12-10-12)			
Audit Notes:				
Version:	Phase:	PROTOTYPE	Tie On Depth:	0.0
Vertical Section:	Depth From (TVD) (ft)	+N/-S (ft)	+E/-W (ft)	Direction (°)
	0.0	0.0	0.0	52.11

Plan Sections										
Measured Depth (ft)	Inclination (°)	Azimuth (°)	Vertical Depth (ft)	+N/-S (ft)	+E/-W (ft)	Dogleg Rate (°/100ft)	Build Rate (°/100ft)	Turn Rate (°/100ft)	TFO (°)	Target
0.0	0.00	0.00	0.0	0.0	0.0	0.00	0.00	0.00	0.00	
2,700.0	0.00	0.00	2,700.0	0.0	0.0	0.00	0.00	0.00	0.00	
3,364.0	6.64	253.37	3,362.5	-11.0	-36.8	1.00	1.00	0.00	253.37	
4,981.1	6.64	253.37	4,968.7	-64.5	-216.0	0.00	0.00	0.00	0.00	
5,313.1	0.00	0.00	5,300.0	-70.0	-234.4	2.00	-2.00	0.00	180.00	
5,441.9	0.00	0.00	5,428.8	-70.0	-234.4	0.00	0.00	0.00	0.00	
6,566.9	90.00	52.99	6,145.0	361.1	337.5	8.00	8.00	0.00	52.99	
6,572.2	90.00	52.99	6,145.0	364.3	341.7	0.00	0.00	0.00	0.00	Landing Point 640'F
6,578.4	90.12	52.99	6,145.0	368.1	346.7	2.00	2.00	0.01	0.23	
11,668.6	90.12	52.99	6,134.0	3,432.3	4,411.3	0.00	0.00	0.00	0.00	BHL 1550'FNL & 6E

Database:	Landmark	Local Co-ordinate Reference:	Well Waves 2H
Company:	Condor Energy, Weld County, CO	TVD Reference:	WELL @ 4899.8ft (RKB - 12.5')
Project:	SEC.18-T7N-R59W	MD Reference:	WELL @ 4899.8ft (RKB - 12.5')
Site:	Waves 2H Pad Sec.18-T7N-R59W	North Reference:	True
Well:	Waves 2H	Survey Calculation Method:	Minimum Curvature
Wellbore:	Wellbore #1		
Design:	Plan #3 (12-10-12)		

Planned Survey									
Measured Depth (ft)	Inclination (°)	Azimuth (°)	Vertical Depth (ft)	+N/-S (ft)	+E/-W (ft)	Vertical Section (ft)	Dogleg Rate (°/100ft)	Build Rate (°/100ft)	Turn Rate (°/100ft)
0.0	0.00	0.00	0.0	0.0	0.0	0.0	0.00	0.00	0.00
1.0	0.00	0.00	1.0	0.0	0.0	0.0	0.00	0.00	0.00
HARDLINE 600' BHL - SECTION LINE 274'S & 313'W of SHL - HARDLINE 600' SHL - SHL 274'FSL & 313'FWL									
40.0	0.00	0.00	40.0	0.0	0.0	0.0	0.00	0.00	0.00
80.0	0.00	0.00	80.0	0.0	0.0	0.0	0.00	0.00	0.00
120.0	0.00	0.00	120.0	0.0	0.0	0.0	0.00	0.00	0.00
160.0	0.00	0.00	160.0	0.0	0.0	0.0	0.00	0.00	0.00
200.0	0.00	0.00	200.0	0.0	0.0	0.0	0.00	0.00	0.00
240.0	0.00	0.00	240.0	0.0	0.0	0.0	0.00	0.00	0.00
280.0	0.00	0.00	280.0	0.0	0.0	0.0	0.00	0.00	0.00
320.0	0.00	0.00	320.0	0.0	0.0	0.0	0.00	0.00	0.00
360.0	0.00	0.00	360.0	0.0	0.0	0.0	0.00	0.00	0.00
400.0	0.00	0.00	400.0	0.0	0.0	0.0	0.00	0.00	0.00
440.0	0.00	0.00	440.0	0.0	0.0	0.0	0.00	0.00	0.00
480.0	0.00	0.00	480.0	0.0	0.0	0.0	0.00	0.00	0.00
520.0	0.00	0.00	520.0	0.0	0.0	0.0	0.00	0.00	0.00
560.0	0.00	0.00	560.0	0.0	0.0	0.0	0.00	0.00	0.00
600.0	0.00	0.00	600.0	0.0	0.0	0.0	0.00	0.00	0.00
640.0	0.00	0.00	640.0	0.0	0.0	0.0	0.00	0.00	0.00
680.0	0.00	0.00	680.0	0.0	0.0	0.0	0.00	0.00	0.00
720.0	0.00	0.00	720.0	0.0	0.0	0.0	0.00	0.00	0.00
760.0	0.00	0.00	760.0	0.0	0.0	0.0	0.00	0.00	0.00
800.0	0.00	0.00	800.0	0.0	0.0	0.0	0.00	0.00	0.00
840.0	0.00	0.00	840.0	0.0	0.0	0.0	0.00	0.00	0.00
880.0	0.00	0.00	880.0	0.0	0.0	0.0	0.00	0.00	0.00
920.0	0.00	0.00	920.0	0.0	0.0	0.0	0.00	0.00	0.00
960.0	0.00	0.00	960.0	0.0	0.0	0.0	0.00	0.00	0.00
1,000.0	0.00	0.00	1,000.0	0.0	0.0	0.0	0.00	0.00	0.00
1,040.0	0.00	0.00	1,040.0	0.0	0.0	0.0	0.00	0.00	0.00
1,080.0	0.00	0.00	1,080.0	0.0	0.0	0.0	0.00	0.00	0.00
1,120.0	0.00	0.00	1,120.0	0.0	0.0	0.0	0.00	0.00	0.00
1,160.0	0.00	0.00	1,160.0	0.0	0.0	0.0	0.00	0.00	0.00
1,200.0	0.00	0.00	1,200.0	0.0	0.0	0.0	0.00	0.00	0.00
1,240.0	0.00	0.00	1,240.0	0.0	0.0	0.0	0.00	0.00	0.00
1,280.0	0.00	0.00	1,280.0	0.0	0.0	0.0	0.00	0.00	0.00
1,320.0	0.00	0.00	1,320.0	0.0	0.0	0.0	0.00	0.00	0.00
1,360.0	0.00	0.00	1,360.0	0.0	0.0	0.0	0.00	0.00	0.00
1,400.0	0.00	0.00	1,400.0	0.0	0.0	0.0	0.00	0.00	0.00
1,440.0	0.00	0.00	1,440.0	0.0	0.0	0.0	0.00	0.00	0.00
1,480.0	0.00	0.00	1,480.0	0.0	0.0	0.0	0.00	0.00	0.00
1,520.0	0.00	0.00	1,520.0	0.0	0.0	0.0	0.00	0.00	0.00
1,560.0	0.00	0.00	1,560.0	0.0	0.0	0.0	0.00	0.00	0.00
1,600.0	0.00	0.00	1,600.0	0.0	0.0	0.0	0.00	0.00	0.00
1,640.0	0.00	0.00	1,640.0	0.0	0.0	0.0	0.00	0.00	0.00
1,680.0	0.00	0.00	1,680.0	0.0	0.0	0.0	0.00	0.00	0.00
1,720.0	0.00	0.00	1,720.0	0.0	0.0	0.0	0.00	0.00	0.00
1,760.0	0.00	0.00	1,760.0	0.0	0.0	0.0	0.00	0.00	0.00
1,800.0	0.00	0.00	1,800.0	0.0	0.0	0.0	0.00	0.00	0.00
1,840.0	0.00	0.00	1,840.0	0.0	0.0	0.0	0.00	0.00	0.00
1,880.0	0.00	0.00	1,880.0	0.0	0.0	0.0	0.00	0.00	0.00
1,920.0	0.00	0.00	1,920.0	0.0	0.0	0.0	0.00	0.00	0.00
1,960.0	0.00	0.00	1,960.0	0.0	0.0	0.0	0.00	0.00	0.00
2,000.0	0.00	0.00	2,000.0	0.0	0.0	0.0	0.00	0.00	0.00
2,040.0	0.00	0.00	2,040.0	0.0	0.0	0.0	0.00	0.00	0.00

Database:	Landmark	Local Co-ordinate Reference:	Well Waves 2H
Company:	Condor Energy, Weld County, CO	TVD Reference:	WELL @ 4899.8ft (RKB - 12.5')
Project:	SEC.18-T7N-R59W	MD Reference:	WELL @ 4899.8ft (RKB - 12.5')
Site:	Waves 2H Pad Sec.18-T7N-R59W	North Reference:	True
Well:	Waves 2H	Survey Calculation Method:	Minimum Curvature
Wellbore:	Wellbore #1		
Design:	Plan #3 (12-10-12)		

Planned Survey									
Measured Depth (ft)	Inclination (°)	Azimuth (°)	Vertical Depth (ft)	+N/-S (ft)	+E/-W (ft)	Vertical Section (ft)	Dogleg Rate (°/100ft)	Build Rate (°/100ft)	Turn Rate (°/100ft)
2,080.0	0.00	0.00	2,080.0	0.0	0.0	0.0	0.00	0.00	0.00
2,120.0	0.00	0.00	2,120.0	0.0	0.0	0.0	0.00	0.00	0.00
2,160.0	0.00	0.00	2,160.0	0.0	0.0	0.0	0.00	0.00	0.00
2,200.0	0.00	0.00	2,200.0	0.0	0.0	0.0	0.00	0.00	0.00
2,240.0	0.00	0.00	2,240.0	0.0	0.0	0.0	0.00	0.00	0.00
2,280.0	0.00	0.00	2,280.0	0.0	0.0	0.0	0.00	0.00	0.00
2,320.0	0.00	0.00	2,320.0	0.0	0.0	0.0	0.00	0.00	0.00
2,360.0	0.00	0.00	2,360.0	0.0	0.0	0.0	0.00	0.00	0.00
2,400.0	0.00	0.00	2,400.0	0.0	0.0	0.0	0.00	0.00	0.00
2,440.0	0.00	0.00	2,440.0	0.0	0.0	0.0	0.00	0.00	0.00
2,480.0	0.00	0.00	2,480.0	0.0	0.0	0.0	0.00	0.00	0.00
2,520.0	0.00	0.00	2,520.0	0.0	0.0	0.0	0.00	0.00	0.00
2,560.0	0.00	0.00	2,560.0	0.0	0.0	0.0	0.00	0.00	0.00
2,600.0	0.00	0.00	2,600.0	0.0	0.0	0.0	0.00	0.00	0.00
2,640.0	0.00	0.00	2,640.0	0.0	0.0	0.0	0.00	0.00	0.00
2,680.0	0.00	0.00	2,680.0	0.0	0.0	0.0	0.00	0.00	0.00
2,700.0	0.00	0.00	2,700.0	0.0	0.0	0.0	0.00	0.00	0.00
KOP #1									
2,720.0	0.20	253.37	2,720.0	0.0	0.0	0.0	1.00	1.00	0.00
2,760.0	0.60	253.37	2,760.0	-0.1	-0.3	-0.3	1.00	1.00	0.00
2,800.0	1.00	253.37	2,800.0	-0.2	-0.8	-0.8	1.00	1.00	0.00
2,840.0	1.40	253.37	2,840.0	-0.5	-1.6	-1.6	1.00	1.00	0.00
2,880.0	1.80	253.37	2,880.0	-0.8	-2.7	-2.6	1.00	1.00	0.00
2,920.0	2.20	253.37	2,919.9	-1.2	-4.0	-3.9	1.00	1.00	0.00
2,960.0	2.60	253.37	2,959.9	-1.7	-5.7	-5.5	1.00	1.00	0.00
3,000.0	3.00	253.37	2,999.9	-2.2	-7.5	-7.3	1.00	1.00	0.00
3,040.0	3.40	253.37	3,039.8	-2.9	-9.7	-9.4	1.00	1.00	0.00
3,080.0	3.80	253.37	3,079.7	-3.6	-12.1	-11.7	1.00	1.00	0.00
3,120.0	4.20	253.37	3,119.6	-4.4	-14.7	-14.3	1.00	1.00	0.00
3,160.0	4.60	253.37	3,159.5	-5.3	-17.7	-17.2	1.00	1.00	0.00
3,200.0	5.00	253.37	3,199.4	-6.2	-20.9	-20.3	1.00	1.00	0.00
3,240.0	5.40	253.37	3,239.2	-7.3	-24.4	-23.7	1.00	1.00	0.00
3,280.0	5.80	253.37	3,279.0	-8.4	-28.1	-27.3	1.00	1.00	0.00
3,320.0	6.20	253.37	3,318.8	-9.6	-32.1	-31.2	1.00	1.00	0.00
3,360.0	6.60	253.37	3,358.5	-10.9	-36.4	-35.4	1.00	1.00	0.00
3,364.0	6.64	253.37	3,362.5	-11.0	-36.8	-35.8	1.00	1.00	0.00
3,400.0	6.64	253.37	3,398.3	-12.2	-40.8	-39.7	0.00	0.00	0.00
3,440.0	6.64	253.37	3,438.0	-13.5	-45.2	-44.0	0.00	0.00	0.00
3,480.0	6.64	253.37	3,477.7	-14.8	-49.7	-48.3	0.00	0.00	0.00
3,520.0	6.64	253.37	3,517.5	-16.2	-54.1	-52.6	0.00	0.00	0.00
3,560.0	6.64	253.37	3,557.2	-17.5	-58.5	-56.9	0.00	0.00	0.00
3,600.0	6.64	253.37	3,596.9	-18.8	-63.0	-61.2	0.00	0.00	0.00
3,640.0	6.64	253.37	3,636.7	-20.1	-67.4	-65.6	0.00	0.00	0.00
3,680.0	6.64	253.37	3,676.4	-21.5	-71.8	-69.9	0.00	0.00	0.00
3,720.0	6.64	253.37	3,716.1	-22.8	-76.3	-74.2	0.00	0.00	0.00
3,760.0	6.64	253.37	3,755.9	-24.1	-80.7	-78.5	0.00	0.00	0.00
3,800.0	6.64	253.37	3,795.6	-25.4	-85.1	-82.8	0.00	0.00	0.00
3,840.0	6.64	253.37	3,835.3	-26.7	-89.6	-87.1	0.00	0.00	0.00
3,880.0	6.64	253.37	3,875.1	-28.1	-94.0	-91.4	0.00	0.00	0.00
3,920.0	6.64	253.37	3,914.8	-29.4	-98.4	-95.7	0.00	0.00	0.00
3,960.0	6.64	253.37	3,954.5	-30.7	-102.9	-100.0	0.00	0.00	0.00
4,000.0	6.64	253.37	3,994.2	-32.0	-107.3	-104.4	0.00	0.00	0.00
4,040.0	6.64	253.37	4,034.0	-33.4	-111.7	-108.7	0.00	0.00	0.00

Database:	Landmark	Local Co-ordinate Reference:	Well Waves 2H
Company:	Condor Energy, Weld County, CO	TVD Reference:	WELL @ 4899.8ft (RKB - 12.5')
Project:	SEC.18-T7N-R59W	MD Reference:	WELL @ 4899.8ft (RKB - 12.5')
Site:	Waves 2H Pad Sec.18-T7N-R59W	North Reference:	True
Well:	Waves 2H	Survey Calculation Method:	Minimum Curvature
Wellbore:	Wellbore #1		
Design:	Plan #3 (12-10-12)		

Planned Survey									
Measured Depth (ft)	Inclination (°)	Azimuth (°)	Vertical Depth (ft)	+N/-S (ft)	+E/-W (ft)	Vertical Section (ft)	Dogleg Rate (°/100ft)	Build Rate (°/100ft)	Turn Rate (°/100ft)
4,080.0	6.64	253.37	4,073.7	-34.7	-116.2	-113.0	0.00	0.00	0.00
4,120.0	6.64	253.37	4,113.4	-36.0	-120.6	-117.3	0.00	0.00	0.00
4,160.0	6.64	253.37	4,153.2	-37.3	-125.0	-121.6	0.00	0.00	0.00
4,200.0	6.64	253.37	4,192.9	-38.7	-129.4	-125.9	0.00	0.00	0.00
4,240.0	6.64	253.37	4,232.6	-40.0	-133.9	-130.2	0.00	0.00	0.00
4,280.0	6.64	253.37	4,272.4	-41.3	-138.3	-134.5	0.00	0.00	0.00
4,320.0	6.64	253.37	4,312.1	-42.6	-142.7	-138.8	0.00	0.00	0.00
4,360.0	6.64	253.37	4,351.8	-44.0	-147.2	-143.1	0.00	0.00	0.00
4,400.0	6.64	253.37	4,391.6	-45.3	-151.6	-147.5	0.00	0.00	0.00
4,440.0	6.64	253.37	4,431.3	-46.6	-156.0	-151.8	0.00	0.00	0.00
4,480.0	6.64	253.37	4,471.0	-47.9	-160.5	-156.1	0.00	0.00	0.00
4,520.0	6.64	253.37	4,510.8	-49.2	-164.9	-160.4	0.00	0.00	0.00
4,560.0	6.64	253.37	4,550.5	-50.6	-169.3	-164.7	0.00	0.00	0.00
4,600.0	6.64	253.37	4,590.2	-51.9	-173.8	-169.0	0.00	0.00	0.00
4,640.0	6.64	253.37	4,630.0	-53.2	-178.2	-173.3	0.00	0.00	0.00
4,680.0	6.64	253.37	4,669.7	-54.5	-182.6	-177.6	0.00	0.00	0.00
4,720.0	6.64	253.37	4,709.4	-55.9	-187.1	-181.9	0.00	0.00	0.00
4,760.0	6.64	253.37	4,749.2	-57.2	-191.5	-186.3	0.00	0.00	0.00
4,800.0	6.64	253.37	4,788.9	-58.5	-195.9	-190.6	0.00	0.00	0.00
4,840.0	6.64	253.37	4,828.6	-59.8	-200.4	-194.9	0.00	0.00	0.00
4,880.0	6.64	253.37	4,868.3	-61.2	-204.8	-199.2	0.00	0.00	0.00
4,920.0	6.64	253.37	4,908.1	-62.5	-209.2	-203.5	0.00	0.00	0.00
4,960.0	6.64	253.37	4,947.8	-63.8	-213.7	-207.8	0.00	0.00	0.00
4,981.1	6.64	253.37	4,968.7	-64.5	-216.0	-210.1	0.00	0.00	0.00
5,000.0	6.26	253.37	4,987.5	-65.1	-218.0	-212.1	2.00	-2.00	0.00
5,040.0	5.46	253.37	5,027.3	-66.3	-221.9	-215.9	2.00	-2.00	0.00
5,080.0	4.66	253.37	5,067.2	-67.3	-225.3	-219.2	2.00	-2.00	0.00
5,120.0	3.86	253.37	5,107.1	-68.1	-228.2	-221.9	2.00	-2.00	0.00
5,160.0	3.06	253.37	5,147.0	-68.8	-230.5	-224.2	2.00	-2.00	0.00
5,200.0	2.26	253.37	5,187.0	-69.4	-232.3	-225.9	2.00	-2.00	0.00
5,240.0	1.46	253.37	5,226.9	-69.7	-233.5	-227.1	2.00	-2.00	0.00
5,280.0	0.66	253.37	5,266.9	-69.9	-234.2	-227.8	2.00	-2.00	0.00
5,313.1	0.00	0.00	5,300.0	-70.0	-234.4	-228.0	2.00	-2.00	0.00
5,320.0	0.00	0.00	5,306.9	-70.0	-234.4	-228.0	0.00	0.00	0.00
5,360.0	0.00	0.00	5,346.9	-70.0	-234.4	-228.0	0.00	0.00	0.00
5,400.0	0.00	0.00	5,386.9	-70.0	-234.4	-228.0	0.00	0.00	0.00
5,440.0	0.00	0.00	5,426.9	-70.0	-234.4	-228.0	0.00	0.00	0.00
5,441.9	0.00	0.00	5,428.8	-70.0	-234.4	-228.0	0.00	0.00	0.00
KOP #2									
5,480.0	3.05	52.99	5,466.9	-69.4	-233.6	-227.0	8.01	8.01	0.00
5,520.0	6.25	52.99	5,506.8	-67.4	-231.0	-223.7	8.00	8.00	0.00
5,560.0	9.45	52.99	5,546.4	-64.1	-226.6	-218.3	8.00	8.00	0.00
5,600.0	12.65	52.99	5,585.6	-59.5	-220.5	-210.6	8.00	8.00	0.00
5,640.0	15.85	52.99	5,624.4	-53.6	-212.7	-200.8	8.00	8.00	0.00
5,680.0	19.05	52.99	5,662.6	-46.4	-203.1	-188.8	8.00	8.00	0.00
5,720.0	22.25	52.99	5,700.0	-37.9	-191.8	-174.7	8.00	8.00	0.00
5,760.0	25.45	52.99	5,736.6	-28.2	-178.9	-158.5	8.00	8.00	0.00
5,800.0	28.65	52.99	5,772.2	-17.2	-164.4	-140.3	8.00	8.00	0.00
5,840.0	31.85	52.99	5,806.7	-5.1	-148.3	-120.2	8.00	8.00	0.00
5,880.0	35.05	52.99	5,840.1	8.2	-130.7	-98.1	8.00	8.00	0.00
5,920.0	38.25	52.99	5,872.2	22.6	-111.6	-74.2	8.00	8.00	0.00
5,960.0	41.45	52.99	5,902.9	38.0	-91.2	-48.6	8.00	8.00	0.00
6,000.0	44.65	52.99	5,932.1	54.4	-69.4	-21.3	8.00	8.00	0.00
6,040.0	47.85	52.99	5,959.8	71.8	-46.3	7.6	8.00	8.00	0.00

Database:	Landmark	Local Co-ordinate Reference:	Well Waves 2H
Company:	Condor Energy, Weld County, CO	TVD Reference:	WELL @ 4899.8ft (RKB - 12.5')
Project:	SEC.18-T7N-R59W	MD Reference:	WELL @ 4899.8ft (RKB - 12.5')
Site:	Waves 2H Pad Sec.18-T7N-R59W	North Reference:	True
Well:	Waves 2H	Survey Calculation Method:	Minimum Curvature
Wellbore:	Wellbore #1		
Design:	Plan #3 (12-10-12)		

Planned Survey									
Measured Depth (ft)	Inclination (°)	Azimuth (°)	Vertical Depth (ft)	+N/-S (ft)	+E/-W (ft)	Vertical Section (ft)	Dogleg Rate (°/100ft)	Build Rate (°/100ft)	Turn Rate (°/100ft)
6,080.0	51.05	52.99	5,985.8	90.1	-22.0	38.0	8.00	8.00	0.00
6,120.0	54.25	52.99	6,010.0	109.2	3.4	69.7	8.00	8.00	0.00
6,160.0	57.45	52.99	6,032.5	129.2	29.8	102.8	8.00	8.00	0.00
6,200.0	60.65	52.99	6,053.1	149.8	57.2	137.1	8.00	8.00	0.00
6,240.0	63.85	52.99	6,071.7	171.1	85.4	172.5	8.00	8.00	0.00
6,280.0	67.05	52.99	6,088.3	193.0	114.5	208.9	8.00	8.00	0.00
6,320.0	70.25	52.99	6,102.9	215.5	144.2	246.1	8.00	8.00	0.00
6,360.0	73.45	52.99	6,115.3	238.3	174.6	284.1	8.00	8.00	0.00
6,400.0	76.65	52.99	6,125.6	261.6	205.4	322.8	8.00	8.00	0.00
6,440.0	79.85	52.99	6,133.8	285.2	236.7	361.9	8.00	8.00	0.00
6,480.0	83.05	52.99	6,139.7	309.0	268.3	401.5	8.00	8.00	0.00
6,520.0	86.25	52.99	6,143.5	332.9	300.1	441.3	8.00	8.00	0.00
6,560.0	89.45	52.99	6,145.0	357.0	332.0	481.3	8.00	8.00	0.00
6,566.9	90.00	52.99	6,145.0	361.2	337.5	488.2	7.97	7.97	0.00
End of Build									
6,572.2	90.00	52.99	6,145.0	364.3	341.7	493.4	0.00	0.00	0.00
7" - Landing Point 640'FSL & 650'FWL									
6,578.4	90.12	52.99	6,145.0	368.1	346.7	499.6	2.00	2.00	0.01
6,600.0	90.12	52.99	6,144.9	381.1	363.9	521.3	0.00	0.00	0.00
6,640.0	90.12	52.99	6,144.9	405.2	395.9	561.2	0.00	0.00	0.00
6,680.0	90.12	52.99	6,144.8	429.2	427.8	601.2	0.00	0.00	0.00
6,720.0	90.12	52.99	6,144.7	453.3	459.8	641.2	0.00	0.00	0.00
6,760.0	90.12	52.99	6,144.6	477.4	491.7	681.2	0.00	0.00	0.00
6,800.0	90.12	52.99	6,144.5	501.5	523.6	721.2	0.00	0.00	0.00
6,840.0	90.12	52.99	6,144.4	525.6	555.6	761.2	0.00	0.00	0.00
6,880.0	90.12	52.99	6,144.3	549.6	587.5	801.2	0.00	0.00	0.00
6,920.0	90.12	52.99	6,144.3	573.7	619.5	841.2	0.00	0.00	0.00
6,960.0	90.12	52.99	6,144.2	597.8	651.4	881.2	0.00	0.00	0.00
7,000.0	90.12	52.99	6,144.1	621.9	683.3	921.2	0.00	0.00	0.00
7,040.0	90.12	52.99	6,144.0	646.0	715.3	961.2	0.00	0.00	0.00
7,080.0	90.12	52.99	6,143.9	670.0	747.2	1,001.2	0.00	0.00	0.00
7,120.0	90.12	52.99	6,143.8	694.1	779.2	1,041.2	0.00	0.00	0.00
7,160.0	90.12	52.99	6,143.7	718.2	811.1	1,081.2	0.00	0.00	0.00
7,200.0	90.12	52.99	6,143.7	742.3	843.0	1,121.2	0.00	0.00	0.00
7,240.0	90.12	52.99	6,143.6	766.4	875.0	1,161.2	0.00	0.00	0.00
7,280.0	90.12	52.99	6,143.5	790.4	906.9	1,201.2	0.00	0.00	0.00
7,320.0	90.12	52.99	6,143.4	814.5	938.9	1,241.2	0.00	0.00	0.00
7,360.0	90.12	52.99	6,143.3	838.6	970.8	1,281.2	0.00	0.00	0.00
7,400.0	90.12	52.99	6,143.2	862.7	1,002.7	1,321.2	0.00	0.00	0.00
7,440.0	90.12	52.99	6,143.1	886.8	1,034.7	1,361.2	0.00	0.00	0.00
7,480.0	90.12	52.99	6,143.0	910.8	1,066.6	1,401.1	0.00	0.00	0.00
7,520.0	90.12	52.99	6,143.0	934.9	1,098.6	1,441.1	0.00	0.00	0.00
7,560.0	90.12	52.99	6,142.9	959.0	1,130.5	1,481.1	0.00	0.00	0.00
7,600.0	90.12	52.99	6,142.8	983.1	1,162.4	1,521.1	0.00	0.00	0.00
7,640.0	90.12	52.99	6,142.7	1,007.2	1,194.4	1,561.1	0.00	0.00	0.00
7,680.0	90.12	52.99	6,142.6	1,031.2	1,226.3	1,601.1	0.00	0.00	0.00
7,720.0	90.12	52.99	6,142.5	1,055.3	1,258.3	1,641.1	0.00	0.00	0.00
7,760.0	90.12	52.99	6,142.4	1,079.4	1,290.2	1,681.1	0.00	0.00	0.00
7,800.0	90.12	52.99	6,142.4	1,103.5	1,322.1	1,721.1	0.00	0.00	0.00
7,840.0	90.12	52.99	6,142.3	1,127.6	1,354.1	1,761.1	0.00	0.00	0.00
7,880.0	90.12	52.99	6,142.2	1,151.6	1,386.0	1,801.1	0.00	0.00	0.00
7,920.0	90.12	52.99	6,142.1	1,175.7	1,418.0	1,841.1	0.00	0.00	0.00
7,960.0	90.12	52.99	6,142.0	1,199.8	1,449.9	1,881.1	0.00	0.00	0.00
8,000.0	90.12	52.99	6,141.9	1,223.9	1,481.8	1,921.1	0.00	0.00	0.00

Database:	Landmark	Local Co-ordinate Reference:	Well Waves 2H
Company:	Condor Energy, Weld County, CO	TVD Reference:	WELL @ 4899.8ft (RKB - 12.5')
Project:	SEC.18-T7N-R59W	MD Reference:	WELL @ 4899.8ft (RKB - 12.5')
Site:	Waves 2H Pad Sec.18-T7N-R59W	North Reference:	True
Well:	Waves 2H	Survey Calculation Method:	Minimum Curvature
Wellbore:	Wellbore #1		
Design:	Plan #3 (12-10-12)		

Planned Survey									
Measured Depth (ft)	Inclination (°)	Azimuth (°)	Vertical Depth (ft)	+N/-S (ft)	+E/-W (ft)	Vertical Section (ft)	Dogleg Rate (°/100ft)	Build Rate (°/100ft)	Turn Rate (°/100ft)
8,040.0	90.12	52.99	6,141.8	1,247.9	1,513.8	1,961.1	0.00	0.00	0.00
8,080.0	90.12	52.99	6,141.8	1,272.0	1,545.7	2,001.1	0.00	0.00	0.00
8,120.0	90.12	52.99	6,141.7	1,296.1	1,577.7	2,041.1	0.00	0.00	0.00
8,160.0	90.12	52.99	6,141.6	1,320.2	1,609.6	2,081.1	0.00	0.00	0.00
8,200.0	90.12	52.99	6,141.5	1,344.3	1,641.5	2,121.1	0.00	0.00	0.00
8,240.0	90.12	52.99	6,141.4	1,368.3	1,673.5	2,161.1	0.00	0.00	0.00
8,280.0	90.12	52.99	6,141.3	1,392.4	1,705.4	2,201.1	0.00	0.00	0.00
8,320.0	90.12	52.99	6,141.2	1,416.5	1,737.4	2,241.0	0.00	0.00	0.00
8,360.0	90.12	52.99	6,141.1	1,440.6	1,769.3	2,281.0	0.00	0.00	0.00
8,400.0	90.12	52.99	6,141.1	1,464.7	1,801.2	2,321.0	0.00	0.00	0.00
8,440.0	90.12	52.99	6,141.0	1,488.7	1,833.2	2,361.0	0.00	0.00	0.00
8,480.0	90.12	52.99	6,140.9	1,512.8	1,865.1	2,401.0	0.00	0.00	0.00
8,520.0	90.12	52.99	6,140.8	1,536.9	1,897.1	2,441.0	0.00	0.00	0.00
8,560.0	90.12	52.99	6,140.7	1,561.0	1,929.0	2,481.0	0.00	0.00	0.00
8,600.0	90.12	52.99	6,140.6	1,585.1	1,960.9	2,521.0	0.00	0.00	0.00
8,640.0	90.12	52.99	6,140.5	1,609.1	1,992.9	2,561.0	0.00	0.00	0.00
8,680.0	90.12	52.99	6,140.5	1,633.2	2,024.8	2,601.0	0.00	0.00	0.00
8,720.0	90.12	52.99	6,140.4	1,657.3	2,056.8	2,641.0	0.00	0.00	0.00
8,760.0	90.12	52.99	6,140.3	1,681.4	2,088.7	2,681.0	0.00	0.00	0.00
8,800.0	90.12	52.99	6,140.2	1,705.5	2,120.6	2,721.0	0.00	0.00	0.00
8,840.0	90.12	52.99	6,140.1	1,729.5	2,152.6	2,761.0	0.00	0.00	0.00
8,880.0	90.12	52.99	6,140.0	1,753.6	2,184.5	2,801.0	0.00	0.00	0.00
8,920.0	90.12	52.99	6,139.9	1,777.7	2,216.5	2,841.0	0.00	0.00	0.00
8,960.0	90.12	52.99	6,139.8	1,801.8	2,248.4	2,881.0	0.00	0.00	0.00
9,000.0	90.12	52.99	6,139.8	1,825.9	2,280.3	2,921.0	0.00	0.00	0.00
9,040.0	90.12	52.99	6,139.7	1,849.9	2,312.3	2,961.0	0.00	0.00	0.00
9,080.0	90.12	52.99	6,139.6	1,874.0	2,344.2	3,001.0	0.00	0.00	0.00
9,120.0	90.12	52.99	6,139.5	1,898.1	2,376.2	3,041.0	0.00	0.00	0.00
9,160.0	90.12	52.99	6,139.4	1,922.2	2,408.1	3,080.9	0.00	0.00	0.00
9,200.0	90.12	52.99	6,139.3	1,946.3	2,440.0	3,120.9	0.00	0.00	0.00
9,240.0	90.12	52.99	6,139.2	1,970.3	2,472.0	3,160.9	0.00	0.00	0.00
9,280.0	90.12	52.99	6,139.2	1,994.4	2,503.9	3,200.9	0.00	0.00	0.00
9,320.0	90.12	52.99	6,139.1	2,018.5	2,535.9	3,240.9	0.00	0.00	0.00
9,360.0	90.12	52.99	6,139.0	2,042.6	2,567.8	3,280.9	0.00	0.00	0.00
9,400.0	90.12	52.99	6,138.9	2,066.6	2,599.7	3,320.9	0.00	0.00	0.00
9,440.0	90.12	52.99	6,138.8	2,090.7	2,631.7	3,360.9	0.00	0.00	0.00
9,480.0	90.12	52.99	6,138.7	2,114.8	2,663.6	3,400.9	0.00	0.00	0.00
9,520.0	90.12	52.99	6,138.6	2,138.9	2,695.6	3,440.9	0.00	0.00	0.00
9,560.0	90.12	52.99	6,138.6	2,163.0	2,727.5	3,480.9	0.00	0.00	0.00
9,600.0	90.12	52.99	6,138.5	2,187.0	2,759.4	3,520.9	0.00	0.00	0.00
9,640.0	90.12	52.99	6,138.4	2,211.1	2,791.4	3,560.9	0.00	0.00	0.00
9,680.0	90.12	52.99	6,138.3	2,235.2	2,823.3	3,600.9	0.00	0.00	0.00
9,720.0	90.12	52.99	6,138.2	2,259.3	2,855.3	3,640.9	0.00	0.00	0.00
9,760.0	90.12	52.99	6,138.1	2,283.4	2,887.2	3,680.9	0.00	0.00	0.00
9,800.0	90.12	52.99	6,138.0	2,307.4	2,919.1	3,720.9	0.00	0.00	0.00
9,840.0	90.12	52.99	6,137.9	2,331.5	2,951.1	3,760.9	0.00	0.00	0.00
9,880.0	90.12	52.99	6,137.9	2,355.6	2,983.0	3,800.9	0.00	0.00	0.00
9,920.0	90.12	52.99	6,137.8	2,379.7	3,015.0	3,840.9	0.00	0.00	0.00
9,960.0	90.12	52.99	6,137.7	2,403.8	3,046.9	3,880.9	0.00	0.00	0.00
10,000.0	90.12	52.99	6,137.6	2,427.8	3,078.8	3,920.8	0.00	0.00	0.00
10,040.0	90.12	52.99	6,137.5	2,451.9	3,110.8	3,960.8	0.00	0.00	0.00
10,080.0	90.12	52.99	6,137.4	2,476.0	3,142.7	4,000.8	0.00	0.00	0.00
10,120.0	90.12	52.99	6,137.3	2,500.1	3,174.7	4,040.8	0.00	0.00	0.00
10,160.0	90.12	52.99	6,137.3	2,524.2	3,206.6	4,080.8	0.00	0.00	0.00

Database:	Landmark	Local Co-ordinate Reference:	Well Waves 2H
Company:	Condor Energy, Weld County, CO	TVD Reference:	WELL @ 4899.8ft (RKB - 12.5')
Project:	SEC.18-T7N-R59W	MD Reference:	WELL @ 4899.8ft (RKB - 12.5')
Site:	Waves 2H Pad Sec.18-T7N-R59W	North Reference:	True
Well:	Waves 2H	Survey Calculation Method:	Minimum Curvature
Wellbore:	Wellbore #1		
Design:	Plan #3 (12-10-12)		

Planned Survey										
Measured Depth (ft)	Inclination (°)	Azimuth (°)	Vertical Depth (ft)	+N/-S (ft)	+E/-W (ft)	Vertical Section (ft)	Dogleg Rate (°/100ft)	Build Rate (°/100ft)	Turn Rate (°/100ft)	
10,200.0	90.12	52.99	6,137.2	2,548.2	3,238.5	4,120.8	0.00	0.00	0.00	
10,240.0	90.12	52.99	6,137.1	2,572.3	3,270.5	4,160.8	0.00	0.00	0.00	
10,280.0	90.12	52.99	6,137.0	2,596.4	3,302.4	4,200.8	0.00	0.00	0.00	
10,320.0	90.12	52.99	6,136.9	2,620.5	3,334.4	4,240.8	0.00	0.00	0.00	
10,360.0	90.12	52.99	6,136.8	2,644.6	3,366.3	4,280.8	0.00	0.00	0.00	
10,400.0	90.12	52.99	6,136.7	2,668.6	3,398.2	4,320.8	0.00	0.00	0.00	
10,440.0	90.12	52.99	6,136.7	2,692.7	3,430.2	4,360.8	0.00	0.00	0.00	
10,480.0	90.12	52.99	6,136.6	2,716.8	3,462.1	4,400.8	0.00	0.00	0.00	
10,520.0	90.12	52.99	6,136.5	2,740.9	3,494.1	4,440.8	0.00	0.00	0.00	
10,560.0	90.12	52.99	6,136.4	2,765.0	3,526.0	4,480.8	0.00	0.00	0.00	
10,600.0	90.12	52.99	6,136.3	2,789.0	3,557.9	4,520.8	0.00	0.00	0.00	
10,640.0	90.12	52.99	6,136.2	2,813.1	3,589.9	4,560.8	0.00	0.00	0.00	
10,680.0	90.12	52.99	6,136.1	2,837.2	3,621.8	4,600.8	0.00	0.00	0.00	
10,720.0	90.12	52.99	6,136.0	2,861.3	3,653.8	4,640.8	0.00	0.00	0.00	
10,760.0	90.12	52.99	6,136.0	2,885.4	3,685.7	4,680.8	0.00	0.00	0.00	
10,800.0	90.12	52.99	6,135.9	2,909.4	3,717.6	4,720.8	0.00	0.00	0.00	
10,840.0	90.12	52.99	6,135.8	2,933.5	3,749.6	4,760.7	0.00	0.00	0.00	
10,880.0	90.12	52.99	6,135.7	2,957.6	3,781.5	4,800.7	0.00	0.00	0.00	
10,920.0	90.12	52.99	6,135.6	2,981.7	3,813.5	4,840.7	0.00	0.00	0.00	
10,960.0	90.12	52.99	6,135.5	3,005.7	3,845.4	4,880.7	0.00	0.00	0.00	
11,000.0	90.12	52.99	6,135.4	3,029.8	3,877.3	4,920.7	0.00	0.00	0.00	
11,040.0	90.12	52.99	6,135.4	3,053.9	3,909.3	4,960.7	0.00	0.00	0.00	
11,080.0	90.12	52.99	6,135.3	3,078.0	3,941.2	5,000.7	0.00	0.00	0.00	
11,120.0	90.12	52.99	6,135.2	3,102.1	3,973.2	5,040.7	0.00	0.00	0.00	
11,160.0	90.12	52.99	6,135.1	3,126.1	4,005.1	5,080.7	0.00	0.00	0.00	
11,200.0	90.12	52.99	6,135.0	3,150.2	4,037.0	5,120.7	0.00	0.00	0.00	
11,240.0	90.12	52.99	6,134.9	3,174.3	4,069.0	5,160.7	0.00	0.00	0.00	
11,280.0	90.12	52.99	6,134.8	3,198.4	4,100.9	5,200.7	0.00	0.00	0.00	
11,320.0	90.12	52.99	6,134.8	3,222.5	4,132.9	5,240.7	0.00	0.00	0.00	
11,360.0	90.12	52.99	6,134.7	3,246.5	4,164.8	5,280.7	0.00	0.00	0.00	
11,400.0	90.12	52.99	6,134.6	3,270.6	4,196.7	5,320.7	0.00	0.00	0.00	
11,440.0	90.12	52.99	6,134.5	3,294.7	4,228.7	5,360.7	0.00	0.00	0.00	
11,480.0	90.12	52.99	6,134.4	3,318.8	4,260.6	5,400.7	0.00	0.00	0.00	
11,520.0	90.12	52.99	6,134.3	3,342.9	4,292.6	5,440.7	0.00	0.00	0.00	
11,560.0	90.12	52.99	6,134.2	3,366.9	4,324.5	5,480.7	0.00	0.00	0.00	
11,600.0	90.12	52.99	6,134.1	3,391.0	4,356.4	5,520.7	0.00	0.00	0.00	
11,640.0	90.12	52.99	6,134.1	3,415.1	4,388.4	5,560.7	0.00	0.00	0.00	
11,668.6	90.12	52.99	6,134.0	3,432.3	4,411.3	5,589.3	0.00	0.00	0.00	
BHL 1550'FNL & 680'FEL										

Plan Annotations					
	Measured Depth (ft)	Vertical Depth (ft)	Local Coordinates		Comment
			+N/-S	+E/-W	
			(ft)	(ft)	
	2,700.0	2,700.0	0.0	0.0	KOP #1
	5,441.9	5,428.8	-70.0	-234.4	KOP #2
	6,566.9	6,145.0	361.2	337.5	End of Build