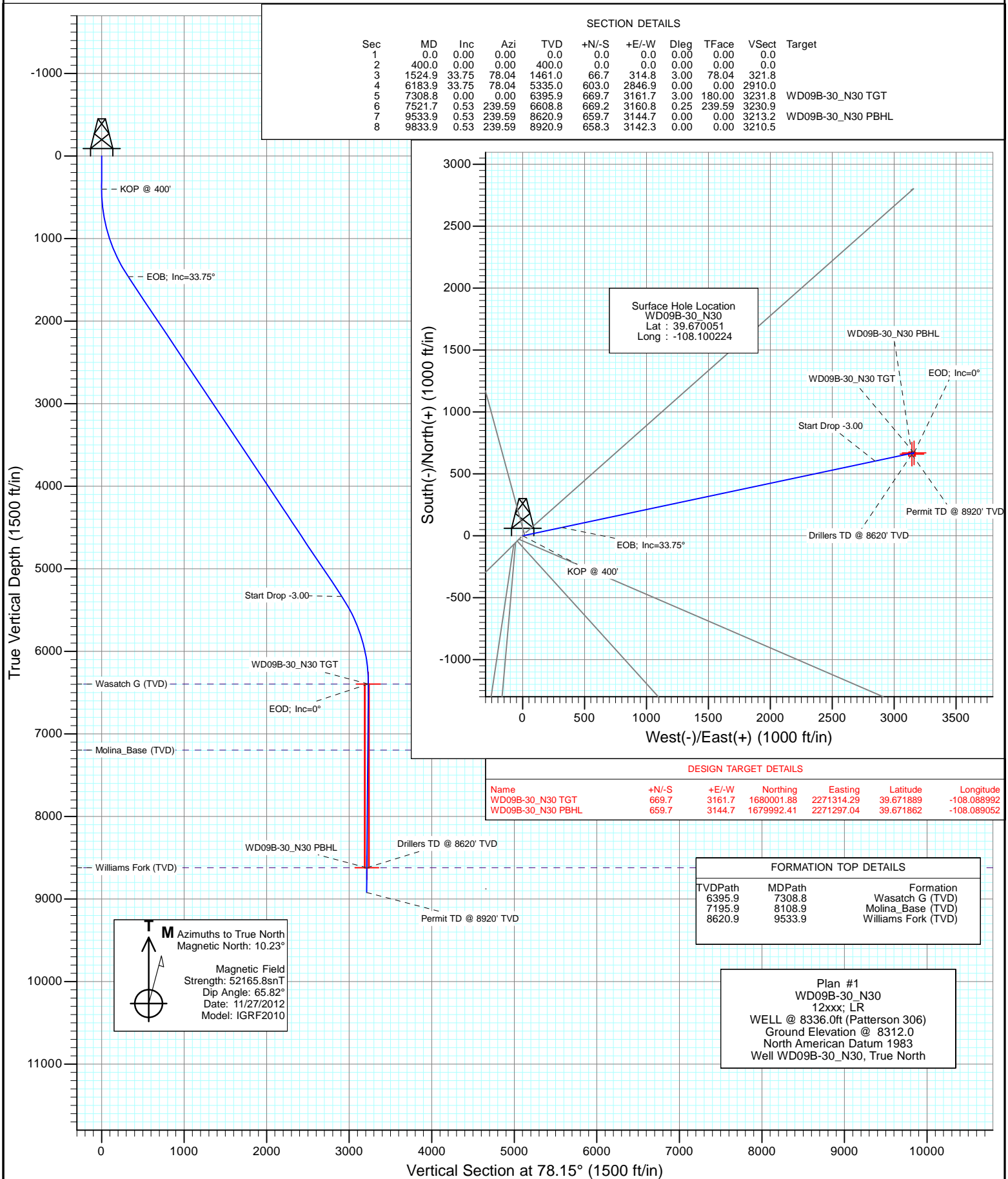


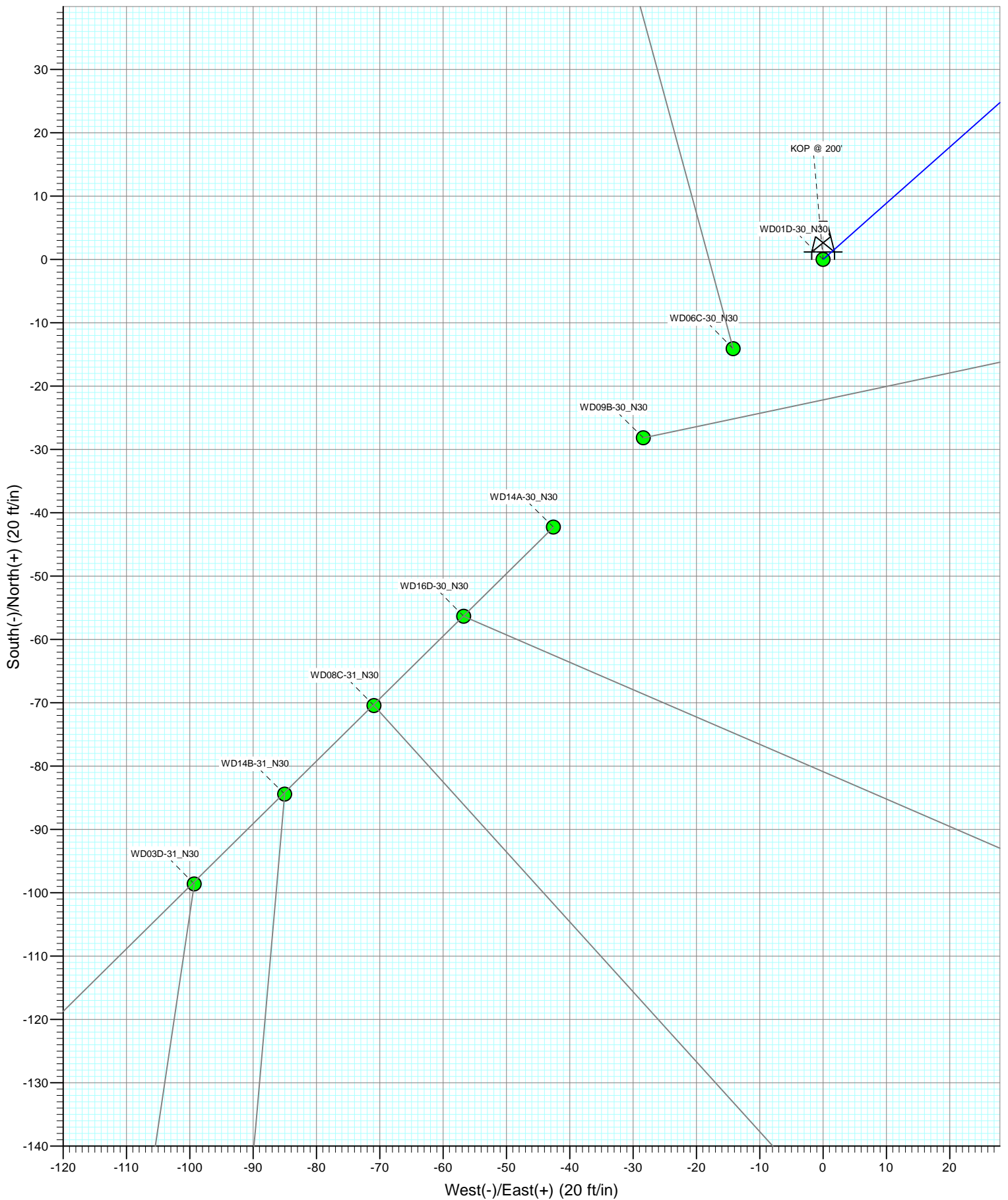


Project: Story Gulch  
Site: N30 495  
Well: WD09B-30\_N30  
Wellbore: DD  
Design: Plan #1





Project: Story Gulch  
Site: N30 495  
Well: WD01D-30\_N30  
Wellbore: DD  
Design: Plan #1



## Planning Report

<b>Database:</b>	USA EDM 5000 Multi Users DB	<b>Local Co-ordinate Reference:</b>	Well WD09B-30_N30
<b>Company:</b>	EnCana Oil & Gas (USA) Inc	<b>TVD Reference:</b>	WELL @ 8336.0ft (Patterson 306)
<b>Project:</b>	Story Gulch	<b>MD Reference:</b>	WELL @ 8336.0ft (Patterson 306)
<b>Site:</b>	N30 495	<b>North Reference:</b>	True
<b>Well:</b>	WD09B-30_N30	<b>Survey Calculation Method:</b>	Minimum Curvature
<b>Wellbore:</b>	DD		
<b>Design:</b>	Plan #1		

<b>Project</b>	Story Gulch		
<b>Map System:</b>	US State Plane 1983	<b>System Datum:</b>	Mean Sea Level
<b>Geo Datum:</b>	North American Datum 1983		
<b>Map Zone:</b>	Colorado Central Zone		

Site		N30 495			
Site Position:		Northing:	1,679,450.30 ft	Latitude:	39.670129
From:	Lat/Long	Easting:	2,268,163.89 ft	Longitude:	-108.100123
Position Uncertainty:	0.0 ft	Slot Radius:	13.200 in	Grid Convergence:	-1.64 °

Well	WD09B-30_N30					
Well Position	+N/-S	0.0 ft	Northing:	1,679,422.94 ft	Latitude:	39.670051
	+E/-W	0.0 ft	Easting:	2,268,134.72 ft	Longitude:	-108.100224
Position Uncertainty		0.0 ft	Wellhead Elevation:	ft	Ground Level:	8,312.0 ft

<b>Wellbore</b>	DD				
<b>Magnetics</b>	<b>Model Name</b>	<b>Sample Date</b>	<b>Declination (°)</b>	<b>Dip Angle (°)</b>	<b>Field Strength (nT)</b>
	IGRF2010	11/27/2012	10.23	65.82	52,166

<b>Design</b>	Plan #1			
<b>Audit Notes:</b>				
<b>Version:</b>	<b>Phase:</b>	PLAN	<b>Tie On Depth:</b>	0.0
<b>Vertical Section:</b>	<b>Depth From (TVD) (ft)</b>	<b>+N/-S (ft)</b>	<b>+E/-W (ft)</b>	<b>Direction (°)</b>
	0.0	0.0	0.0	78.15

<b>Plan Sections</b>										
Measured Depth (ft)	Inclination (°)	Azimuth (°)	Vertical Depth (ft)	+N/-S (ft)	+E/-W (ft)	Dogleg Rate (°/100ft)	Build Rate (°/100ft)	Turn Rate (°/100ft)	TFO (°)	Target
0.0	0.00	0.00	0.0	0.0	0.0	0.00	0.00	0.00	0.00	
400.0	0.00	0.00	400.0	0.0	0.0	0.00	0.00	0.00	0.00	
1,524.9	33.75	78.04	1,461.0	66.7	314.8	3.00	3.00	0.00	78.04	
6,183.9	33.75	78.04	5,335.0	603.0	2,846.9	0.00	0.00	0.00	0.00	
7,308.8	0.00	0.00	6,395.9	669.7	3,161.7	3.00	-3.00	0.00	180.00	WD09B-30_N30 TGT
7,521.7	0.53	239.59	6,608.8	669.2	3,160.8	0.25	0.25	-56.57	239.59	
9,533.9	0.53	239.59	8,620.9	659.7	3,144.7	0.00	0.00	0.00	0.00	WD09B-30_N30 PBH
9,833.9	0.53	239.59	8,920.9	658.3	3,142.3	0.00	0.00	0.00	0.00	

# Planning Report

<b>Database:</b>	USA EDM 5000 Multi Users DB	<b>Local Co-ordinate Reference:</b>	Well WD09B-30_N30
<b>Company:</b>	EnCana Oil & Gas (USA) Inc	<b>TVD Reference:</b>	WELL @ 8336.0ft (Patterson 306)
<b>Project:</b>	Story Gulch	<b>MD Reference:</b>	WELL @ 8336.0ft (Patterson 306)
<b>Site:</b>	N30 495	<b>North Reference:</b>	True
<b>Well:</b>	WD09B-30_N30	<b>Survey Calculation Method:</b>	Minimum Curvature
<b>Wellbore:</b>	DD		
<b>Design:</b>	Plan #1		

## Planned Survey

Measured Depth (ft)	Inclination (°)	Azimuth (°)	Vertical Depth (ft)	+N/-S (ft)	+E/-W (ft)	Vertical Section (ft)	Dogleg Rate (°/100ft)	Build Rate (°/100ft)	Comments / Formations
0.0	0.00	0.00	0.0	0.0	0.0	0.0	0.00	0.00	
100.0	0.00	0.00	100.0	0.0	0.0	0.0	0.00	0.00	
200.0	0.00	0.00	200.0	0.0	0.0	0.0	0.00	0.00	
300.0	0.00	0.00	300.0	0.0	0.0	0.0	0.00	0.00	
400.0	0.00	0.00	400.0	0.0	0.0	0.0	0.00	0.00	KOP @ 400'
500.0	3.00	78.04	500.0	0.5	2.6	2.6	3.00	3.00	
600.0	6.00	78.04	599.6	2.2	10.2	10.5	3.00	3.00	
700.0	9.00	78.04	698.8	4.9	23.0	23.5	3.00	3.00	
800.0	12.00	78.04	797.1	8.6	40.8	41.7	3.00	3.00	
900.0	15.00	78.04	894.3	13.5	63.7	65.1	3.00	3.00	
1,000.0	18.00	78.04	990.2	19.4	91.4	93.5	3.00	3.00	
1,100.0	21.00	78.04	1,084.4	26.3	124.1	126.9	3.00	3.00	
1,200.0	24.00	78.04	1,176.8	34.2	161.5	165.1	3.00	3.00	
1,300.0	27.00	78.04	1,267.1	43.1	203.6	208.2	3.00	3.00	
1,400.0	30.00	78.04	1,354.9	53.0	250.3	255.9	3.00	3.00	
1,500.0	33.00	78.04	1,440.2	63.8	301.4	308.1	3.00	3.00	
1,524.9	33.75	78.04	1,461.0	66.7	314.8	321.8	3.00	3.00	EOB; Inc=33.75°
1,600.0	33.75	78.04	1,523.4	75.3	355.6	363.5	0.00	0.00	
1,700.0	33.75	78.04	1,606.6	86.8	410.0	419.1	0.00	0.00	
1,800.0	33.75	78.04	1,689.7	98.4	464.3	474.6	0.00	0.00	
1,900.0	33.75	78.04	1,772.9	109.9	518.7	530.2	0.00	0.00	
2,000.0	33.75	78.04	1,856.0	121.4	573.0	585.7	0.00	0.00	
2,100.0	33.75	78.04	1,939.2	132.9	627.4	641.3	0.00	0.00	
2,200.0	33.75	78.04	2,022.3	144.4	681.7	696.8	0.00	0.00	
2,300.0	33.75	78.04	2,105.5	155.9	736.1	752.4	0.00	0.00	
2,400.0	33.75	78.04	2,188.6	167.4	790.4	808.0	0.00	0.00	
2,500.0	33.75	78.04	2,271.8	178.9	844.8	863.5	0.00	0.00	
2,600.0	33.75	78.04	2,354.9	190.4	899.1	919.1	0.00	0.00	
2,700.0	33.75	78.04	2,438.1	202.0	953.5	974.6	0.00	0.00	
2,800.0	33.75	78.04	2,521.2	213.5	1,007.8	1,030.2	0.00	0.00	
2,900.0	33.75	78.04	2,604.4	225.0	1,062.2	1,085.7	0.00	0.00	
3,000.0	33.75	78.04	2,687.5	236.5	1,116.5	1,141.3	0.00	0.00	
3,100.0	33.75	78.04	2,770.7	248.0	1,170.8	1,196.8	0.00	0.00	
3,200.0	33.75	78.04	2,853.8	259.5	1,225.2	1,252.4	0.00	0.00	
3,300.0	33.75	78.04	2,937.0	271.0	1,279.5	1,307.9	0.00	0.00	
3,400.0	33.75	78.04	3,020.1	282.5	1,333.9	1,363.5	0.00	0.00	
3,500.0	33.75	78.04	3,103.3	294.1	1,388.2	1,419.0	0.00	0.00	
3,600.0	33.75	78.04	3,186.4	305.6	1,442.6	1,474.6	0.00	0.00	
3,700.0	33.75	78.04	3,269.6	317.1	1,496.9	1,530.1	0.00	0.00	
3,800.0	33.75	78.04	3,352.7	328.6	1,551.3	1,585.7	0.00	0.00	
3,900.0	33.75	78.04	3,435.9	340.1	1,605.6	1,641.2	0.00	0.00	
4,000.0	33.75	78.04	3,519.0	351.6	1,660.0	1,696.8	0.00	0.00	
4,100.0	33.75	78.04	3,602.2	363.1	1,714.3	1,752.4	0.00	0.00	
4,200.0	33.75	78.04	3,685.3	374.6	1,768.7	1,807.9	0.00	0.00	
4,300.0	33.75	78.04	3,768.5	386.1	1,823.0	1,863.5	0.00	0.00	
4,400.0	33.75	78.04	3,851.6	397.7	1,877.4	1,919.0	0.00	0.00	
4,500.0	33.75	78.04	3,934.8	409.2	1,931.7	1,974.6	0.00	0.00	
4,600.0	33.75	78.04	4,017.9	420.7	1,986.1	2,030.1	0.00	0.00	
4,700.0	33.75	78.04	4,101.1	432.2	2,040.4	2,085.7	0.00	0.00	
4,800.0	33.75	78.04	4,184.2	443.7	2,094.7	2,141.2	0.00	0.00	
4,900.0	33.75	78.04	4,267.4	455.2	2,149.1	2,196.8	0.00	0.00	
5,000.0	33.75	78.04	4,350.5	466.7	2,203.4	2,252.3	0.00	0.00	

# Planning Report

<b>Database:</b>	USA EDM 5000 Multi Users DB	<b>Local Co-ordinate Reference:</b>	Well WD09B-30_N30
<b>Company:</b>	EnCana Oil & Gas (USA) Inc	<b>TVD Reference:</b>	WELL @ 8336.0ft (Patterson 306)
<b>Project:</b>	Story Gulch	<b>MD Reference:</b>	WELL @ 8336.0ft (Patterson 306)
<b>Site:</b>	N30 495	<b>North Reference:</b>	True
<b>Well:</b>	WD09B-30_N30	<b>Survey Calculation Method:</b>	Minimum Curvature
<b>Wellbore:</b>	DD		
<b>Design:</b>	Plan #1		

Planned Survey									
Measured Depth (ft)	Inclination (°)	Azimuth (°)	Vertical Depth (ft)	+N/-S (ft)	+E/-W (ft)	Vertical Section (ft)	Dogleg Rate (°/100ft)	Build Rate (°/100ft)	Comments / Formations
5,100.0	33.75	78.04	4,433.7	478.2	2,257.8	2,307.9	0.00	0.00	
5,200.0	33.75	78.04	4,516.8	489.7	2,312.1	2,363.4	0.00	0.00	
5,300.0	33.75	78.04	4,600.0	501.3	2,366.5	2,419.0	0.00	0.00	
5,400.0	33.75	78.04	4,683.1	512.8	2,420.8	2,474.5	0.00	0.00	
5,500.0	33.75	78.04	4,766.3	524.3	2,475.2	2,530.1	0.00	0.00	
5,600.0	33.75	78.04	4,849.4	535.8	2,529.5	2,585.6	0.00	0.00	
5,700.0	33.75	78.04	4,932.6	547.3	2,583.9	2,641.2	0.00	0.00	
5,800.0	33.75	78.04	5,015.7	558.8	2,638.2	2,696.7	0.00	0.00	
5,900.0	33.75	78.04	5,098.9	570.3	2,692.6	2,752.3	0.00	0.00	
6,000.0	33.75	78.04	5,182.0	581.8	2,746.9	2,807.9	0.00	0.00	
6,100.0	33.75	78.04	5,265.2	593.4	2,801.3	2,863.4	0.00	0.00	
6,183.9	33.75	78.04	5,335.0	603.0	2,846.9	2,910.0	0.00	0.00	Start Drop -3.00
6,200.0	33.26	78.04	5,348.4	604.9	2,855.5	2,918.9	3.00	-3.00	
6,300.0	30.26	78.04	5,433.4	615.8	2,907.0	2,971.5	3.00	-3.00	
6,400.0	27.26	78.04	5,521.0	625.7	2,954.1	3,019.7	3.00	-3.00	
6,500.0	24.26	78.04	5,611.1	634.7	2,996.6	3,063.1	3.00	-3.00	
6,600.0	21.26	78.04	5,703.3	642.8	3,034.5	3,101.8	3.00	-3.00	
6,700.0	18.26	78.04	5,797.4	649.8	3,067.6	3,135.6	3.00	-3.00	
6,800.0	15.26	78.04	5,893.1	655.7	3,095.8	3,164.5	3.00	-3.00	
6,900.0	12.26	78.04	5,990.2	660.7	3,119.1	3,188.3	3.00	-3.00	
7,000.0	9.26	78.04	6,088.4	664.5	3,137.3	3,206.9	3.00	-3.00	
7,100.0	6.26	78.04	6,187.5	667.3	3,150.5	3,220.4	3.00	-3.00	
7,200.0	3.26	78.04	6,287.2	669.1	3,158.7	3,228.7	3.00	-3.00	
7,300.0	0.26	78.04	6,387.1	669.7	3,161.7	3,231.8	3.00	-3.00	
7,308.8	0.00	0.00	6,395.9	669.7	3,161.7	3,231.8	3.00	-3.00	EOD; Inc=0° - Wasatch G (TVD) - WD09B-30_1
7,400.0	0.23	239.59	6,487.1	669.6	3,161.5	3,231.7	0.25	0.25	
7,500.0	0.48	239.59	6,587.1	669.3	3,161.0	3,231.1	0.25	0.25	
7,521.7	0.53	239.59	6,608.8	669.2	3,160.8	3,230.9	0.25	0.25	
7,600.0	0.53	239.59	6,687.1	668.8	3,160.2	3,230.2	0.00	0.00	
7,700.0	0.53	239.59	6,787.1	668.4	3,159.4	3,229.3	0.00	0.00	
7,800.0	0.53	239.59	6,887.1	667.9	3,158.6	3,228.5	0.00	0.00	
7,900.0	0.53	239.59	6,987.1	667.4	3,157.8	3,227.6	0.00	0.00	
8,000.0	0.53	239.59	7,087.1	667.0	3,157.0	3,226.7	0.00	0.00	
8,100.0	0.53	239.59	7,187.1	666.5	3,156.2	3,225.8	0.00	0.00	
8,108.9	0.53	239.59	7,195.9	666.4	3,156.1	3,225.7	0.00	0.00	Molina_Base (TVD)
8,200.0	0.53	239.59	7,287.1	666.0	3,155.4	3,224.9	0.00	0.00	
8,300.0	0.53	239.59	7,387.1	665.5	3,154.6	3,224.1	0.00	0.00	
8,400.0	0.53	239.59	7,487.1	665.1	3,153.8	3,223.2	0.00	0.00	
8,500.0	0.53	239.59	7,587.1	664.6	3,153.0	3,222.3	0.00	0.00	
8,600.0	0.53	239.59	7,687.0	664.1	3,152.2	3,221.4	0.00	0.00	
8,700.0	0.53	239.59	7,787.0	663.7	3,151.4	3,220.5	0.00	0.00	
8,800.0	0.53	239.59	7,887.0	663.2	3,150.6	3,219.7	0.00	0.00	
8,900.0	0.53	239.59	7,987.0	662.7	3,149.8	3,218.8	0.00	0.00	
9,000.0	0.53	239.59	8,087.0	662.3	3,149.0	3,217.9	0.00	0.00	
9,100.0	0.53	239.59	8,187.0	661.8	3,148.2	3,217.0	0.00	0.00	
9,200.0	0.53	239.59	8,287.0	661.3	3,147.4	3,216.1	0.00	0.00	
9,300.0	0.53	239.59	8,387.0	660.8	3,146.6	3,215.2	0.00	0.00	
9,400.0	0.53	239.59	8,487.0	660.4	3,145.8	3,214.4	0.00	0.00	
9,500.0	0.53	239.59	8,587.0	659.9	3,145.0	3,213.5	0.00	0.00	
9,533.9	0.53	239.59	8,620.9	659.7	3,144.7	3,213.2	0.00	0.00	Drillers TD @ 8620' TVD - Williams Fork (TVD)
9,600.0	0.53	239.59	8,687.0	659.4	3,144.2	3,212.6	0.00	0.00	
9,700.0	0.53	239.59	8,787.0	659.0	3,143.4	3,211.7	0.00	0.00	

## Planning Report

<b>Database:</b>	USA EDM 5000 Multi Users DB	<b>Local Co-ordinate Reference:</b>	Well WD09B-30_N30
<b>Company:</b>	EnCana Oil & Gas (USA) Inc	<b>TVD Reference:</b>	WELL @ 8336.0ft (Patterson 306)
<b>Project:</b>	Story Gulch	<b>MD Reference:</b>	WELL @ 8336.0ft (Patterson 306)
<b>Site:</b>	N30 495	<b>North Reference:</b>	True
<b>Well:</b>	WD09B-30_N30	<b>Survey Calculation Method:</b>	Minimum Curvature
<b>Wellbore:</b>	DD		
<b>Design:</b>	Plan #1		

### Planned Survey

Measured Depth (ft)	Inclination (°)	Azimuth (°)	Vertical Depth (ft)	+N/-S (ft)	+E/-W (ft)	Vertical Section (ft)	Dogleg Rate (°/100ft)	Build Rate (°/100ft)	Comments / Formations
9,800.0	0.53	239.59	8,887.0	658.5	3,142.6	3,210.8	0.00	0.00	
9,833.9	0.53	239.59	8,920.9	658.3	3,142.3	3,210.5	0.00	0.00	Permit TD @ 8920' TVD

### Targets

Target Name - hit/miss target - Shape	Dip Angle (°)	Dip Dir. (°)	TVD (ft)	+N/-S (ft)	+E/-W (ft)	Northing (ft)	Easting (ft)	Latitude	Longitude
WD09B-30_N30 PBHL - plan hits target center - Rectangle (sides W30.0 H50.0 D0.0)	0.00	0.00	8,620.9	659.7	3,144.7	1,679,992.41	2,271,297.04	39.671862	-108.089052
WD09B-30_N30 TGT - plan hits target center - Point	0.00	0.00	6,395.9	669.7	3,161.7	1,680,001.88	2,271,314.29	39.671889	-108.088992

### Formations

Measured Depth (ft)	Vertical Depth (ft)	Name	Lithology	Dip (°)	Dip Direction (°)
7,308.8	6,395.9	Wasatch G (TVD)			
8,108.9	7,195.9	Molina_Base (TVD)			
9,533.9	8,620.9	Williams Fork (TVD)			

### Plan Annotations

Measured Depth (ft)	Vertical Depth (ft)	Local Coordinates		Comment
		+N/-S (ft)	+E/-W (ft)	
400.0	400.0	0.0	0.0	KOP @ 400'
1,524.9	1,461.0	66.7	314.8	EOB; Inc=33.75°
6,183.9	5,335.0	603.0	2,846.9	Start Drop -3.00
7,308.8	6,395.9	669.7	3,161.7	EOD; Inc=0°
9,533.9	8,620.9	669.2	3,160.8	Drillers TD @ 8620' TVD
9,833.9	8,920.9	659.7	3,144.7	Permit TD @ 8920' TVD