



# LEGEND:

● PROPOSED LOCATION



Encana OIL & GAS (USA) INC.

WELL PAD SG N30 495

SECTION 30, T4S, R95W, 6th P.M.

NE 1/4 SW 1/4

SHEET 8 OF 11



**Uintah Engineering & Land Surveying**  
 85 South 200 East Vernal, Utah 84078  
 (435) 789-1017 \* FAX (435) 789-1813

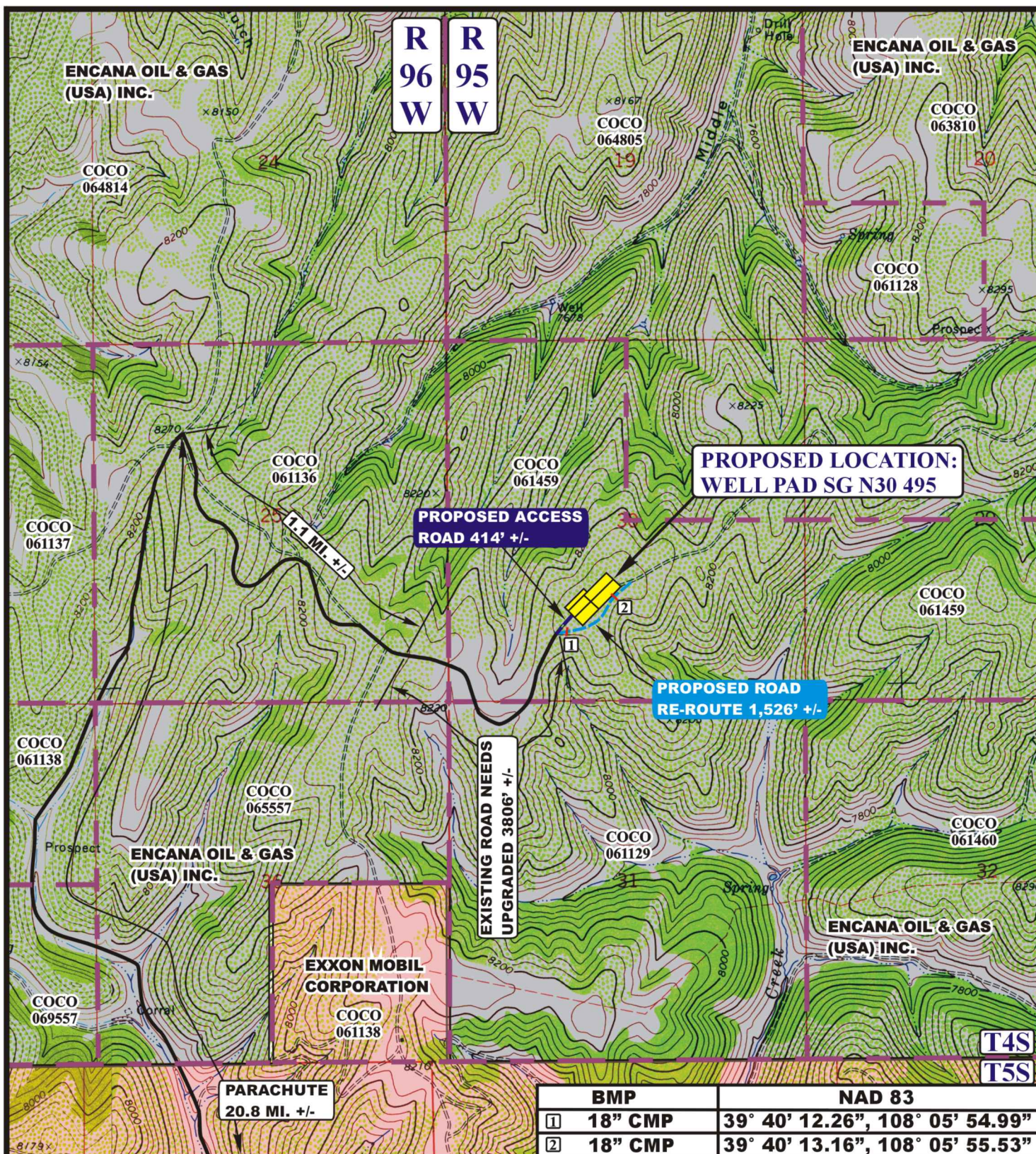
**ACCESS ROAD**  
**MAP**

**11** **14** **12**  
 MONTH DAY YEAR

SCALE: 1:100,000 DRAWN BY: J.L.G. REVISED: 12-13-12







## LEGEND:

----- PROPOSED ACCESS ROAD  
 ----- EXISTING ROAD



**Encana OIL & GAS (USA) INC.**

**WELL PAD SG N30 495**

**SECTION 30, T4S, R95W, 6th P.M.**

**NE 1/4 SW 1/4**

**SHEET 9 OF 11**



**Uintah Engineering & Land Surveying**  
 85 South 200 East Vernal, Utah 84078  
 (435) 789-1017 \* FAX (435) 789-1813

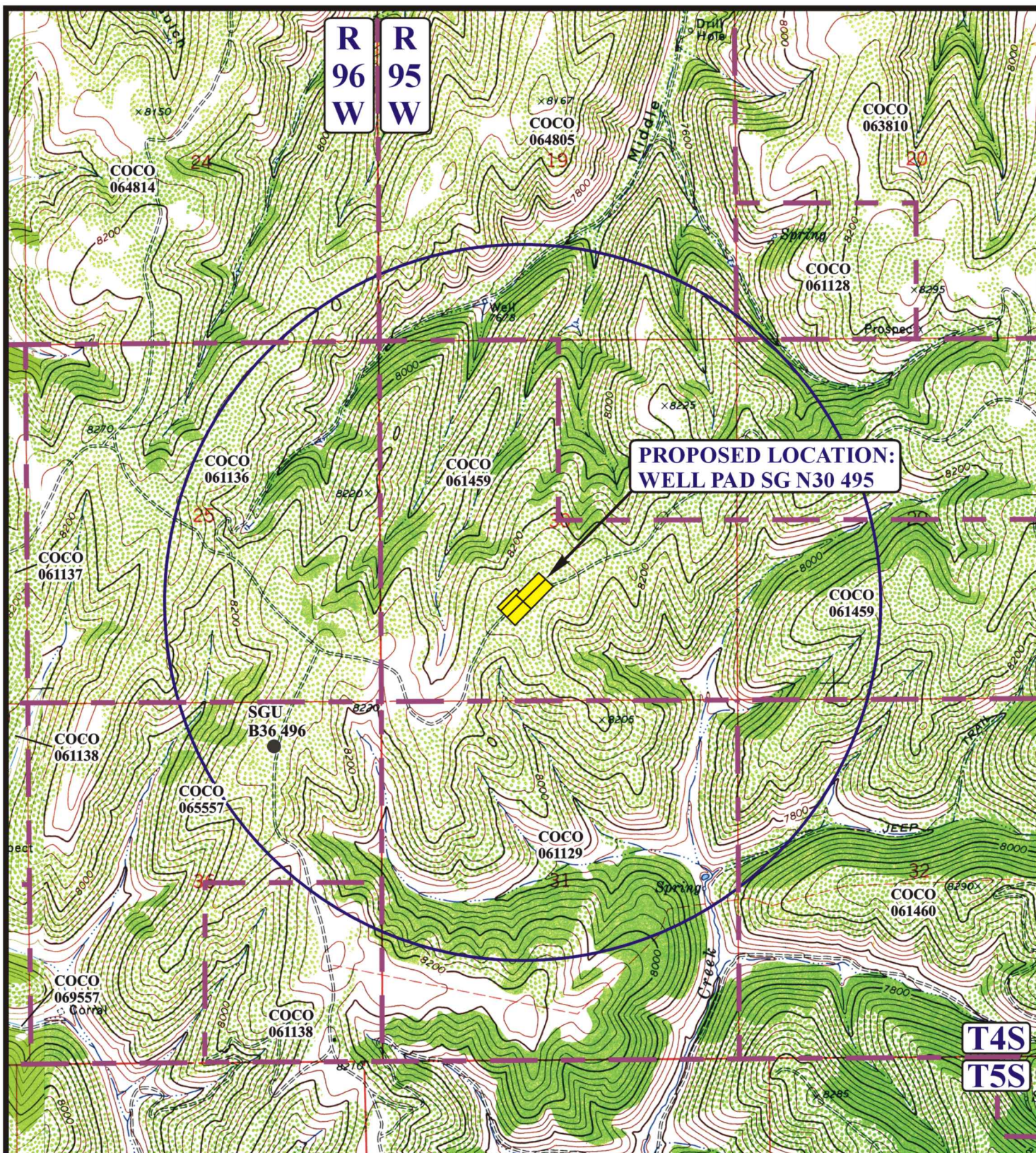
**ACCESS ROAD  
 MAP**

**11 14 12**  
 MONTH DAY YEAR

**SCALE: 1" = 2000' DRAWN BY: J.L.G. REVISED: 12-13-12**







# LEGEND:

- DISPOSAL WELLS
- PRODUCING WELLS
- SHUT IN WELLS
- WATER WELLS
- ABANDONED WELLS
- TEMPORARILY ABANDONED



## Encana OIL & GAS (USA) INC.

WELL PAD SG N30 495  
SECTION 30, T4S, R95W, 6th P.M.  
NE 1/4 SW 1/4

SHEET 10 OF 11



Uintah Engineering & Land Surveying  
85 South 200 East Vernal, Utah 84078  
(435) 789-1017 \* FAX (435) 789-1813

ACCESS ROAD  
MAP

11 14 12  
MONTH DAY YEAR

SCALE: 1" = 2000' DRAWN BY: J.L.G. REVISED: 12-13-12





Encana OIL & GAS (USA) INC.  
WELL PAD SG N30 495  
SECTION 30, T4S, R95W, 6<sup>th</sup> P.M.

PROCEED IN A NORTHWESTERLY DIRECTION FROM PARACHUTE, COLORADO ALONG COUNTY ROAD 215 APPROXIMATELY 10.8 MILES TO THE JUNCTION OF THIS ROAD AND AN EXISTING ROAD TO THE NORTHWEST; TURN LEFT AND PROCEED IN A NORTHWESTERLY DIRECTION APPROXIMATELY 10.0 MILES TO THE JUNCTION OF THIS ROAD AND AN EXISTING ROAD SOUTHEAST; TURN RIGHT AND PROCEED IN A SOUTHEASTERLY, THEN SOUTHEASTERLY DIRECTION APPROXIMATELY 1.1 MILES TO AN EXISTING ROAD TO THE SOUTHEAST; CONTINUE IN A SOUTHEASTERLY, THEN NORTHEASTERLY DIRECTION APPROXIMATELY 3806' TO THE BEGINNING OF THE PROPOSED ACCESS ROAD TO THE NORTHEAST; FOLLOW ROAD FLAGS IN A NORTHEASTERLY DIRECTION APPROXIMATELY 414' TO THE PROPOSED LOCATION.

TOTAL DISTANCE FROM PARACHUTE, COLORADO TO THE PROPOSED WELL LOCATION IS APPROXIMATELY 22.7 MILES.