

T4S, R95W, 6th P.M.

E 1/4 Cor. Sec. 19  
1953 Brass Cap  
0.8' High, Mound of  
Stones, Steel Post  
Lat: 39.687817°  
Long: 108.088903°

Section Corner  
Re-Established  
Using Double  
Proportion Method

Encana OIL & GAS (USA) INC.

Well location, SG WD01D-30 N30 495, located as shown in the NE 1/4 SW 1/4 of Section 30, T4S, R95W, 6th P.M., Garfield County, Colorado.

### BASIS OF ELEVATION

BENCH MARK (H79) LOCATED IN THE NE 1/4 OF SECTION 35, T4S, R98W, 6th P.M. TAKEN FROM THE BULL FORK QUADRANGLE, COLORADO, 7.5 MINUTE SERIES (TOPO GRAPHICAL MAP) PUBLISHED BY THE UNITED STATES DEPARTMENT OF THE INTERIOR, GEOLOGICAL SURVEY. SAID ELEVATION IS MARKED AS BEING 8535 FEET.

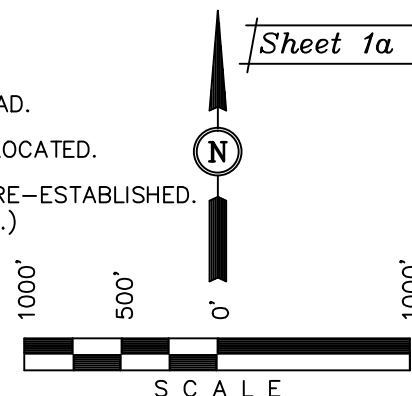
### BASIS OF BEARINGS

BASIS OF BEARINGS IS A G.P.S. OBSERVATION.

### LEGEND:

- └ = 90° SYMBOL
- = PROPOSED WELL HEAD.
- ▲ = SECTION CORNERS LOCATED.
- △ = SECTION CORNERS RE-ESTABLISHED.  
(Not Set on Ground.)

Sheet 1a of 11



### CERTIFICATE

THIS IS TO CERTIFY THAT THE ABOVE PLAT WAS PREPARED AND LOCATION AS SHOWN WAS STAKED ON THE GROUND FROM FIELD NOTES OF ACTUAL SURVEYS MADE BY ME OR UNDER MY SUPERVISION AND THAT THE SAME ARE TRUE AND CORRECT TO THE BEST OF MY KNOWLEDGE AND BELIEF.

REGISTERED LAND SURVEYOR  
REGISTRATION NO. 17492  
STATE OF COLORADO  
92-30-12

**UINTAH ENGINEERING & LAND SURVEYING**  
85 SOUTH 200 EAST - VERNAL, UTAH 84078  
(435) 789-1017

PDOP = 1.0

NAD 83 (TARGET BOTTOM HOLE)	NAD 83 (SURFACE LOCATION)
LATITUDE = 39°40'39.78" (39.677717)	LATITUDE = 39°40'12.46" (39.670128)
LONGITUDE = 108°05'20.64" (108.089067)	LONGITUDE = 108°06'00.44" (108.100122)
NAD 27 (TARGET BOTTOM HOLE)	NAD 27 (SURFACE LOCATION)
LATITUDE = 39°40'39.87" (39.677742)	LATITUDE = 39°40'12.55" (39.670153)
LONGITUDE = 108°05'18.36" (108.088433)	LONGITUDE = 108°05'58.16" (108.099489)

SCALE 1" = 1000'	DATE SURVEYED: 12-02-11	DATE DRAWN: 11-20-12
PARTY B.J. B.B. T.B.	REFERENCES G.L.O. PLAT	
WEATHER COLD	FILE Encana OIL & GAS (USA) INC.	

