

Anadarko Petroleum Corp.

Weld County, CO (NAD 83)

Sec. 13-T3N-R66W

Maverick 28N-13HZ

Plan A Rev 0

Plan: Plan A Rev 0 Permit

Sperry Drilling Services

Proposal Report

26 September, 2012

Well Coordinates: 1,323,534.43 N, 3,216,856.96 E (40° 13' 08.01" N, 104° 43' 24.36" W)

Ground Level: 5,059.00 ft

Local Coordinate Origin:

Centered on Well Maverick 28N-13HZ

Viewing Datum:

RKB=17 @ 5076.00ft (Drilling Rig)

TVDs to System:

N

North Reference:

True

Unit System:

API - US Survey Feet - Custom

Geodetic Scale Factor Applied

Version: 2003.16 Build: 43I

HALLIBURTON

Project: Weld County, CO (NAD 83)
Site: Sec. 13-T3N-R66W
Well: Maverick 28N-13HZ
Wellbore: Plan A Rev 0
Design: Plan A Rev 0 Permit

Anadarko Petroleum Corp.

HALLIBURTON
Sperry Drilling

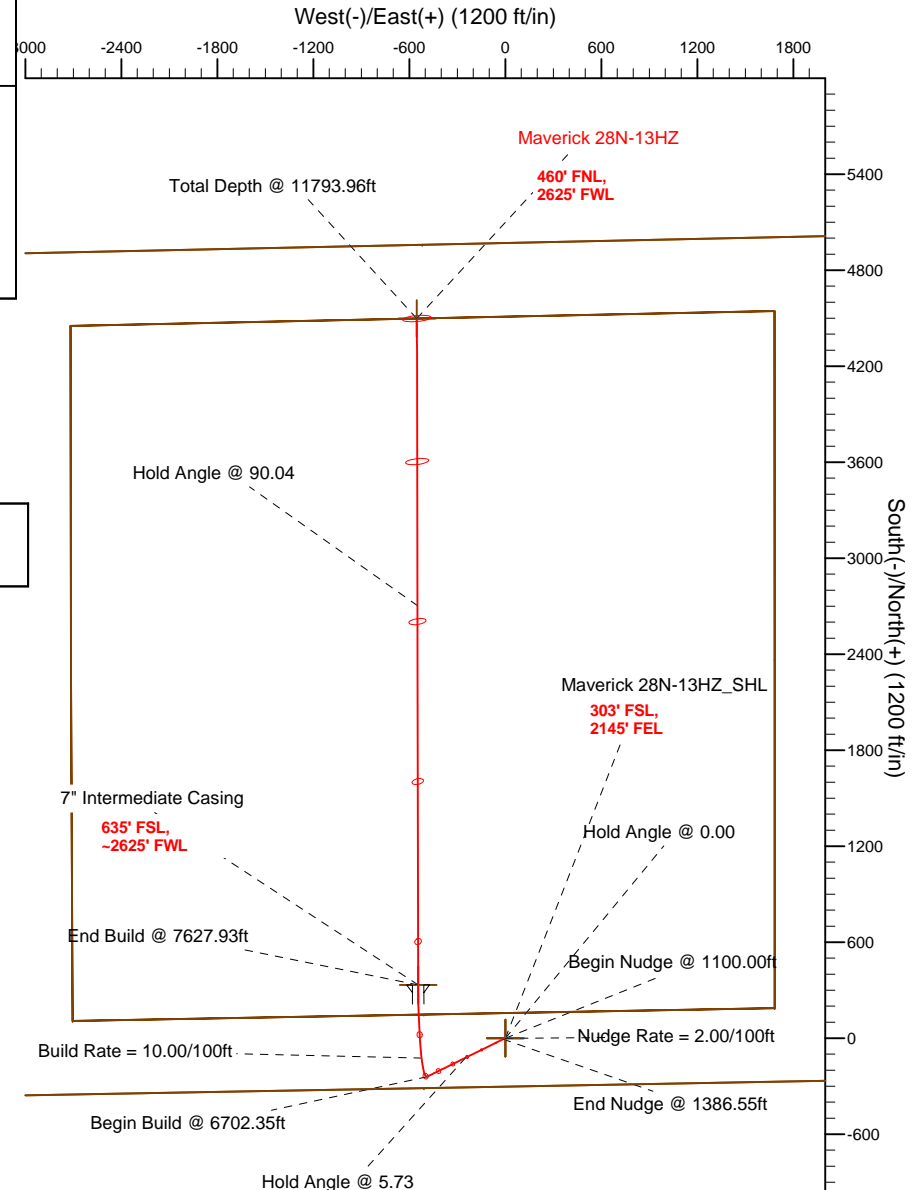
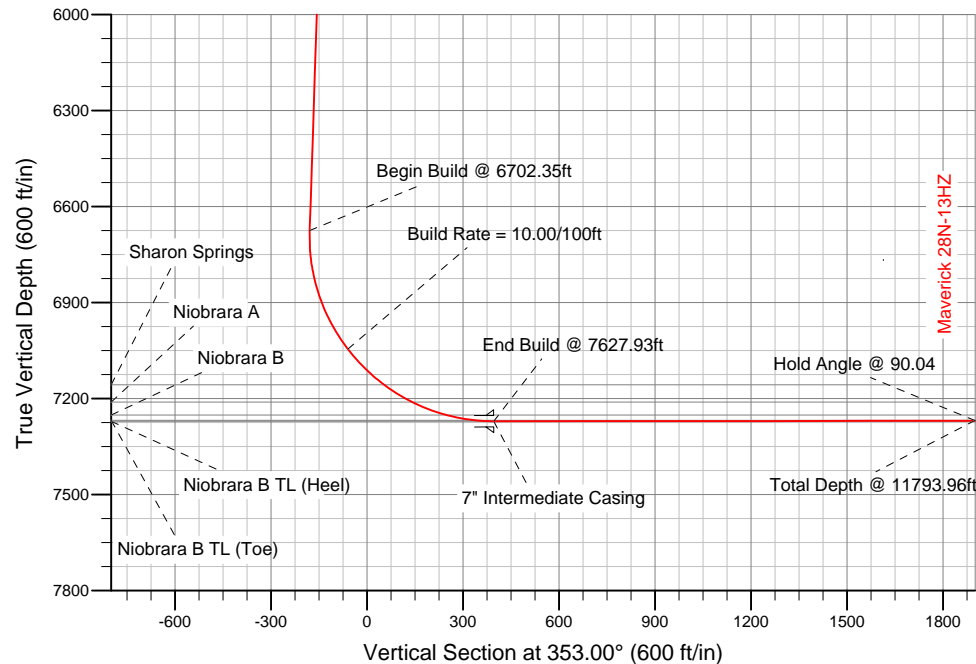
SECTION DETAILS

Sec	MD	Inc	Azi	TVD	+N/-S	+E/-W	DLeg	TFace	VSec	Target
1	0.00	0.00	0.00	0.00	0.00	0.00	0.00	0.00	0.00	
2	1100.00	0.00	0.00	1100.00	0.00	0.00	0.00	0.00	0.00	
3	1386.55	5.73	243.80	1386.07	-6.32	-12.85	2.00	243.80	-4.71	
4	6702.35	5.73	243.80	6675.30	-240.71	-489.13	0.00	0.00	-179.30	
5	7627.93	90.04	359.89	7271.00	332.00	-544.00	10.00	115.97	395.82	Maverick 28N-13HZ_Casing Point
6	11793.96	90.04	359.89	7268.00	4498.03	-552.29	0.00	0.00	4531.81	Maverick 28N-13HZ_BHL

WELLBORE TARGET DETAILS (LAT/LONG)

Name	TVD	+N/-S	+E/-W	Latitude	Longitude	Shape
Maverick 28N-13HZ_Section Line	0.00	0.00	0.00	40.218893	-104.723433	Polygon
Maverick 28N-13HZ_Setback Line	0.00	0.00	0.00	40.218893	-104.723433	Polygon
Maverick 28N-13HZ_SHL	0.00	0.00	0.00	40.218893	-104.723433	Point
Maverick 28N-13HZ_BHL	7268.00	4498.03	-552.29	40.231240	-104.725411	Point
Maverick 28N-13HZ_Casing Point	7271.00	332.00	-544.00	40.219804	-104.725381	Point

Target Line:
7271.16' TVDkb @ 0° VS Drilling 90.04°



WELL DETAILS: Maverick 28N-13HZ

Ground Level: 5059.00 RKB=17 @ 5076.00ft (Drilling Rig)

Plan: Plan A Rev 0 Permit (Maverick 28N-13HZ/Plan A Rev 0)

Created By: Fred Hartmann

Date: 09/26/2012

Reviewed: _____

Date: _____



Plan Report for Maverick 28N-13HZ - Plan A Rev 0 Permit

Measured Depth (ft)	Inclination (°)	Azimuth (°)	Vertical Depth (ft)	+N/-S (ft)	+E/-W (ft)	Vertical Section (ft)	Dogleg Rate (°/100ft)	Build Rate (°/100ft)	Turn Rate (°/100ft)	Toolface Azimuth (°)
0.00	0.00	0.00	0.00	0.00	0.00	0.00	0.00	0.00	0.00	0.00
Maverick 28N-13HZ_SHL - Maverick 28N-13HZ_Section Line - Maverick 28N-13HZ_Setback Line										
100.00	0.00	0.00	100.00	0.00	0.00	0.00	0.00	0.00	0.00	0.00
200.00	0.00	0.00	200.00	0.00	0.00	0.00	0.00	0.00	0.00	0.00
300.00	0.00	0.00	300.00	0.00	0.00	0.00	0.00	0.00	0.00	0.00
400.00	0.00	0.00	400.00	0.00	0.00	0.00	0.00	0.00	0.00	0.00
500.00	0.00	0.00	500.00	0.00	0.00	0.00	0.00	0.00	0.00	0.00
600.00	0.00	0.00	600.00	0.00	0.00	0.00	0.00	0.00	0.00	0.00
Hold Angle @ 0.00										
700.00	0.00	0.00	700.00	0.00	0.00	0.00	0.00	0.00	0.00	0.00
787.00	0.00	0.00	787.00	0.00	0.00	0.00	0.00	0.00	0.00	0.00
Fox Hills										
800.00	0.00	0.00	800.00	0.00	0.00	0.00	0.00	0.00	0.00	0.00
900.00	0.00	0.00	900.00	0.00	0.00	0.00	0.00	0.00	0.00	0.00
1,000.00	0.00	0.00	1,000.00	0.00	0.00	0.00	0.00	0.00	0.00	0.00
1,100.00	0.00	0.00	1,100.00	0.00	0.00	0.00	0.00	0.00	0.00	0.00
Begin Nudge @ 1100.00ft										
1,200.00	2.00	243.80	1,199.98	-0.77	-1.57	-0.57	2.00	2.00	0.00	243.80
Nudge Rate = 2.00/100ft										
1,300.00	4.00	243.80	1,299.84	-3.08	-6.26	-2.30	2.00	2.00	0.00	0.00
1,386.55	5.73	243.80	1,386.07	-6.32	-12.85	-4.71	2.00	2.00	0.00	0.00
End Nudge @ 1386.55ft										
1,400.00	5.73	243.80	1,399.46	-6.92	-14.05	-5.15	0.00	0.00	0.00	0.00
1,500.00	5.73	243.80	1,498.96	-11.32	-23.01	-8.44	0.00	0.00	0.00	0.00
1,600.00	5.73	243.80	1,598.46	-15.73	-31.97	-11.72	0.00	0.00	0.00	0.00
1,700.00	5.73	243.80	1,697.96	-20.14	-40.93	-15.00	0.00	0.00	0.00	0.00
1,800.00	5.73	243.80	1,797.46	-24.55	-49.89	-18.29	0.00	0.00	0.00	0.00
1,900.00	5.73	243.80	1,896.96	-28.96	-58.85	-21.57	0.00	0.00	0.00	0.00
2,000.00	5.73	243.80	1,996.46	-33.37	-67.81	-24.86	0.00	0.00	0.00	0.00
2,100.00	5.73	243.80	2,095.96	-37.78	-76.77	-28.14	0.00	0.00	0.00	0.00
2,200.00	5.73	243.80	2,195.46	-42.19	-85.73	-31.43	0.00	0.00	0.00	0.00
2,300.00	5.73	243.80	2,294.96	-46.60	-94.69	-34.71	0.00	0.00	0.00	0.00
2,400.00	5.73	243.80	2,394.46	-51.01	-103.65	-38.00	0.00	0.00	0.00	0.00
2,500.00	5.73	243.80	2,493.96	-55.42	-112.61	-41.28	0.00	0.00	0.00	0.00
2,600.00	5.73	243.80	2,593.46	-59.83	-121.57	-44.56	0.00	0.00	0.00	0.00
2,700.00	5.73	243.80	2,692.96	-64.24	-130.53	-47.85	0.00	0.00	0.00	0.00
2,800.00	5.73	243.80	2,792.46	-68.64	-139.49	-51.13	0.00	0.00	0.00	0.00
2,900.00	5.73	243.80	2,891.96	-73.05	-148.45	-54.42	0.00	0.00	0.00	0.00
3,000.00	5.73	243.80	2,991.46	-77.46	-157.41	-57.70	0.00	0.00	0.00	0.00
3,100.00	5.73	243.80	3,090.96	-81.87	-166.37	-60.99	0.00	0.00	0.00	0.00
3,200.00	5.73	243.80	3,190.46	-86.28	-175.33	-64.27	0.00	0.00	0.00	0.00
3,300.00	5.73	243.80	3,289.96	-90.69	-184.29	-67.56	0.00	0.00	0.00	0.00
3,400.00	5.73	243.80	3,389.46	-95.10	-193.25	-70.84	0.00	0.00	0.00	0.00
3,500.00	5.73	243.80	3,488.96	-99.51	-202.21	-74.12	0.00	0.00	0.00	0.00
3,600.00	5.73	243.80	3,588.46	-103.92	-211.17	-77.41	0.00	0.00	0.00	0.00
3,700.00	5.73	243.80	3,687.96	-108.33	-220.13	-80.69	0.00	0.00	0.00	0.00
3,800.00	5.73	243.80	3,787.46	-112.74	-229.09	-83.98	0.00	0.00	0.00	0.00
3,900.00	5.73	243.80	3,886.96	-117.15	-238.05	-87.26	0.00	0.00	0.00	0.00
4,000.00	5.73	243.80	3,986.46	-121.56	-247.01	-90.55	0.00	0.00	0.00	0.00
Hold Angle @ 5.73										
4,050.79	5.73	243.80	4,037.00	-123.80	-251.56	-92.22	0.00	0.00	0.00	0.00
Parkman										
4,100.00	5.73	243.80	4,085.96	-125.96	-255.97	-93.83	0.00	0.00	0.00	0.00
4,200.00	5.73	243.80	4,185.46	-130.37	-264.92	-97.12	0.00	0.00	0.00	0.00
4,300.00	5.73	243.80	4,284.96	-134.78	-273.88	-100.40	0.00	0.00	0.00	0.00
4,400.00	5.73	243.80	4,384.46	-139.19	-282.84	-103.68	0.00	0.00	0.00	0.00
4,500.00	5.73	243.80	4,483.96	-143.60	-291.80	-106.97	0.00	0.00	0.00	0.00
4,582.45	5.73	243.80	4,566.00	-147.24	-299.19	-109.68	0.00	0.00	0.00	0.00

Plan Report for Maverick 28N-13HZ - Plan A Rev 0 Permit

Measured Depth (ft)	Inclination (°)	Azimuth (°)	Vertical Depth (ft)	+N-S (ft)	+E-W (ft)	Vertical Section (ft)	Dogleg Rate (°/100ft)	Build Rate (°/100ft)	Turn Rate (°/100ft)	Toolface Azimuth (°)
Sussex										
4,600.00	5.73	243.80	4,583.46	-148.01	-300.76	-110.25	0.00	0.00	0.00	0.00
4,700.00	5.73	243.80	4,682.96	-152.42	-309.72	-113.54	0.00	0.00	0.00	0.00
4,800.00	5.73	243.80	4,782.46	-156.83	-318.68	-116.82	0.00	0.00	0.00	0.00
4,900.00	5.73	243.80	4,881.96	-161.24	-327.64	-120.11	0.00	0.00	0.00	0.00
5,000.00	5.73	243.80	4,981.46	-165.65	-336.60	-123.39	0.00	0.00	0.00	0.00
5,100.00	5.73	243.80	5,080.96	-170.06	-345.56	-126.68	0.00	0.00	0.00	0.00
5,200.00	5.73	243.80	5,180.46	-174.47	-354.52	-129.96	0.00	0.00	0.00	0.00
5,300.00	5.73	243.80	5,279.96	-178.88	-363.48	-133.24	0.00	0.00	0.00	0.00
5,400.00	5.73	243.80	5,379.46	-183.28	-372.44	-136.53	0.00	0.00	0.00	0.00
5,500.00	5.73	243.80	5,478.96	-187.69	-381.40	-139.81	0.00	0.00	0.00	0.00
5,600.00	5.73	243.80	5,578.46	-192.10	-390.36	-143.10	0.00	0.00	0.00	0.00
5,700.00	5.73	243.80	5,677.96	-196.51	-399.32	-146.38	0.00	0.00	0.00	0.00
5,800.00	5.73	243.80	5,777.46	-200.92	-408.28	-149.67	0.00	0.00	0.00	0.00
5,900.00	5.73	243.80	5,876.96	-205.33	-417.24	-152.95	0.00	0.00	0.00	0.00
6,000.00	5.73	243.80	5,976.46	-209.74	-426.20	-156.24	0.00	0.00	0.00	0.00
6,100.00	5.73	243.80	6,075.96	-214.15	-435.16	-159.52	0.00	0.00	0.00	0.00
6,200.00	5.73	243.80	6,175.46	-218.56	-444.12	-162.80	0.00	0.00	0.00	0.00
6,300.00	5.73	243.80	6,274.96	-222.97	-453.08	-166.09	0.00	0.00	0.00	0.00
6,400.00	5.73	243.80	6,374.46	-227.38	-462.04	-169.37	0.00	0.00	0.00	0.00
6,500.00	5.73	243.80	6,473.96	-231.79	-471.00	-172.66	0.00	0.00	0.00	0.00
6,600.00	5.73	243.80	6,573.46	-236.20	-479.96	-175.94	0.00	0.00	0.00	0.00
6,700.00	5.73	243.80	6,672.96	-240.60	-488.92	-179.23	0.00	0.00	0.00	0.00
6,702.35	5.73	243.80	6,675.30	-240.71	-489.13	-179.30	0.00	0.00	0.00	0.00
Begin Build @ 6702.35ft										
6,800.00	8.88	324.67	6,772.36	-236.70	-497.88	-174.26	10.00	3.23	82.82	115.97
6,900.00	17.98	343.76	6,869.56	-215.53	-506.69	-152.17	10.00	9.09	19.09	35.54
7,000.00	27.69	349.99	6,961.63	-177.73	-515.07	-113.64	10.00	9.72	6.24	16.91
7,100.00	37.55	353.15	7,045.75	-124.46	-522.76	-59.82	10.00	9.86	3.15	11.14
Build Rate = 10.00/100ft										
7,200.00	47.46	355.14	7,119.38	-57.32	-529.53	7.64	10.00	9.91	1.99	8.47
7,259.03	53.32	356.03	7,157.00	-11.99	-533.02	53.05	10.00	9.93	1.52	7.00
Sharon Springs										
7,300.00	57.40	356.58	7,180.28	21.64	-535.19	86.70	10.00	9.94	1.33	6.43
7,362.41	63.61	357.32	7,211.00	75.85	-538.07	140.86	10.00	9.95	1.19	6.12
Niobrara A										
7,400.00	67.35	357.73	7,226.60	110.01	-539.54	174.95	10.00	9.95	1.09	5.75
7,479.25	75.23	358.52	7,252.00	184.97	-541.99	249.64	10.00	9.95	1.00	5.58
Niobrara B										
7,500.00	77.30	358.72	7,256.93	205.13	-542.47	269.71	10.00	9.96	0.95	5.33
7,600.00	87.26	359.64	7,270.34	304.08	-543.88	368.10	10.00	9.96	0.92	5.28
7,627.93	90.04	359.89	7,271.00	332.00	-544.00	395.82	10.00	9.96	0.90	5.16
End Build @ 7627.93ft - Niobrara B TL (Heel) - 7" Intermediate Casing - Maverick 28N-13HZ_Casing Point										
7,700.00	90.04	359.89	7,270.95	404.07	-544.14	467.37	0.00	0.00	0.00	5.15
7,800.00	90.04	359.89	7,270.88	504.07	-544.34	566.65	0.00	0.00	0.00	0.00
7,900.00	90.04	359.89	7,270.80	604.07	-544.54	665.93	0.00	0.00	0.00	0.00
8,000.00	90.04	359.89	7,270.73	704.07	-544.74	765.21	0.00	0.00	0.00	0.00
8,100.00	90.04	359.89	7,270.66	804.07	-544.94	864.49	0.00	0.00	0.00	0.00
8,200.00	90.04	359.89	7,270.59	904.07	-545.14	963.77	0.00	0.00	0.00	0.00
8,300.00	90.04	359.89	7,270.52	1,004.07	-545.34	1,063.05	0.00	0.00	0.00	0.00
8,400.00	90.04	359.89	7,270.44	1,104.07	-545.54	1,162.33	0.00	0.00	0.00	0.00
8,500.00	90.04	359.89	7,270.37	1,204.07	-545.74	1,261.60	0.00	0.00	0.00	0.00
8,600.00	90.04	359.89	7,270.30	1,304.07	-545.93	1,360.88	0.00	0.00	0.00	0.00
8,700.00	90.04	359.89	7,270.23	1,404.07	-546.13	1,460.16	0.00	0.00	0.00	0.00
8,800.00	90.04	359.89	7,270.16	1,504.07	-546.33	1,559.44	0.00	0.00	0.00	0.00
8,900.00	90.04	359.89	7,270.08	1,604.07	-546.53	1,658.72	0.00	0.00	0.00	0.00
9,000.00	90.04	359.89	7,270.01	1,704.07	-546.73	1,758.00	0.00	0.00	0.00	0.00
9,100.00	90.04	359.89	7,269.94	1,804.07	-546.93	1,857.28	0.00	0.00	0.00	0.00

Plan Report for Maverick 28N-13HZ - Plan A Rev 0 Permit

Measured Depth (ft)	Inclination (°)	Azimuth (°)	Vertical Depth (ft)	+N/-S (ft)	+E/-W (ft)	Vertical Section (ft)	Dogleg Rate (°/100ft)	Build Rate (°/100ft)	Turn Rate (°/100ft)	Toolface Azimuth (°)
9,200.00	90.04	359.89	7,269.87	1,904.07	-547.13	1,956.55	0.00	0.00	0.00	0.00
9,300.00	90.04	359.89	7,269.80	2,004.07	-547.33	2,055.83	0.00	0.00	0.00	0.00
9,400.00	90.04	359.89	7,269.72	2,104.07	-547.53	2,155.11	0.00	0.00	0.00	0.00
9,500.00	90.04	359.89	7,269.65	2,204.07	-547.72	2,254.39	0.00	0.00	0.00	0.00
9,600.00	90.04	359.89	7,269.58	2,304.07	-547.92	2,353.67	0.00	0.00	0.00	0.00
9,700.00	90.04	359.89	7,269.51	2,404.07	-548.12	2,452.95	0.00	0.00	0.00	0.00
9,800.00	90.04	359.89	7,269.44	2,504.07	-548.32	2,552.23	0.00	0.00	0.00	0.00
9,900.00	90.04	359.89	7,269.36	2,604.07	-548.52	2,651.50	0.00	0.00	0.00	0.00
10,000.00	90.04	359.89	7,269.29	2,704.07	-548.72	2,750.78	0.00	0.00	0.00	0.00
Hold Angle @ 90.04										
10,100.00	90.04	359.89	7,269.22	2,804.07	-548.92	2,850.06	0.00	0.00	0.00	0.00
10,200.00	90.04	359.89	7,269.15	2,904.07	-549.12	2,949.34	0.00	0.00	0.00	0.00
10,300.00	90.04	359.89	7,269.08	3,004.07	-549.32	3,048.62	0.00	0.00	0.00	0.00
10,400.00	90.04	359.89	7,269.00	3,104.07	-549.52	3,147.90	0.00	0.00	0.00	0.00
10,500.00	90.04	359.89	7,268.93	3,204.07	-549.71	3,247.18	0.00	0.00	0.00	0.00
10,600.00	90.04	359.89	7,268.86	3,304.07	-549.91	3,346.46	0.00	0.00	0.00	0.00
10,700.00	90.04	359.89	7,268.79	3,404.07	-550.11	3,445.73	0.00	0.00	0.00	0.00
10,800.00	90.04	359.89	7,268.72	3,504.07	-550.31	3,545.01	0.00	0.00	0.00	0.00
10,900.00	90.04	359.89	7,268.64	3,604.06	-550.51	3,644.29	0.00	0.00	0.00	0.00
11,000.00	90.04	359.89	7,268.57	3,704.06	-550.71	3,743.57	0.00	0.00	0.00	0.00
11,100.00	90.04	359.89	7,268.50	3,804.06	-550.91	3,842.85	0.00	0.00	0.00	0.00
11,200.00	90.04	359.89	7,268.43	3,904.06	-551.11	3,942.13	0.00	0.00	0.00	0.00
11,300.00	90.04	359.89	7,268.36	4,004.06	-551.31	4,041.41	0.00	0.00	0.00	0.00
11,400.00	90.04	359.89	7,268.28	4,104.06	-551.50	4,140.68	0.00	0.00	0.00	0.00
11,500.00	90.04	359.89	7,268.21	4,204.06	-551.70	4,239.96	0.00	0.00	0.00	0.00
11,600.00	90.04	359.89	7,268.14	4,304.06	-551.90	4,339.24	0.00	0.00	0.00	0.00
11,700.00	90.04	359.89	7,268.07	4,404.06	-552.10	4,438.52	0.00	0.00	0.00	0.00
11,793.95	90.04	359.89	7,268.00	4,498.01	-552.29	4,531.79	0.00	0.00	0.00	0.00
Niobrara B TL (Toe)										
11,793.96	90.04	359.89	7,268.00	4,498.02	-552.29	4,531.80	0.00	0.00	0.00	0.00
Total Depth @ 11793.96ft - Maverick 28N-13HZ_BHL										

Plan Annotations

Measured Depth (ft)	Vertical Depth (ft)	Local Coordinates +N/-S (ft)	+E/-W (ft)	Comment
600.00	600.00	0.00	0.00	Hold Angle @ 0.00
1,100.00	1,100.00	0.00	0.00	Begin Nudge @ 1100.00ft
1,200.00	1,199.98	-0.77	-1.57	Nudge Rate = 2.00/100ft
1,386.55	1,386.07	-6.32	-12.85	End Nudge @ 1386.55ft
4,000.00	3,986.46	-121.56	-247.01	Hold Angle @ 5.73
6,702.35	6,675.30	-240.71	-489.13	Begin Build @ 6702.35ft
7,100.00	7,045.75	-124.46	-522.76	Build Rate = 10.00/100ft
7,627.93	7,271.00	332.00	-544.00	End Build @ 7627.93ft
10,000.00	7,269.29	2,704.07	-548.72	Hold Angle @ 90.04
11,793.96	7,268.00	4,498.02	-552.29	Total Depth @ 11793.96ft

Vertical Section Information

Angle Type	Target	Azimuth (°)	Origin Type	Origin +N/-S (ft)	+E/-W (ft)	Start TVD (ft)
Target	Maverick 28N-13HZ_BHL	353.00	Slot	0.00	0.00	7,268.00

Plan Report for Maverick 28N-13HZ - Plan A Rev 0 Permit**Survey tool program**

From (ft)	To (ft)	Survey/Plan	Survey Tool
0.00	11,793.96	Plan A Rev 0 Permit	MWD

Casing Details

Measured Depth (ft)	Vertical Depth (ft)	Name	Casing Diameter (")	Hole Diameter (")
7,627.93	7,271.00	7" Intermediate Casing	7	8-3/4

Formation Details

Measured Depth (ft)	Vertical Depth (ft)	Name	Lithology	Dip (°)	Dip Direction (°)
787.00	787.00	Fox Hills		0.00	
4,050.79	4,037.00	Parkman		0.00	
4,582.45	4,566.00	Sussex		0.00	
7,259.03	7,157.00	Sharon Springs		0.00	
7,362.41	7,211.00	Niobrara A		0.00	
7,479.25	7,252.00	Niobrara B		0.00	
7,627.93	7,271.00	Niobrara B TL (Heel)		0.00	
11,793.95	7,268.00	Niobrara B TL (Toe)		0.00	

Targets associated with this wellbore

Target Name	TVD (ft)	+N/-S (ft)	+E/-W (ft)	Shape
Maverick 28N-13HZ_BHL	7,268.00	4,498.03	-552.29	Point
Maverick 28N-13HZ_Casing Point	7,271.00	332.00	-544.00	Point
Maverick 28N-13HZ_Setback Line	0.00	0.00	0.00	Polygon
Maverick 28N-13HZ_SHL	0.00	0.00	0.00	Point
Maverick 28N-13HZ_Section Line	0.00	0.00	0.00	Polygon

North Reference Sheet for Sec. 13-T3N-R66W - Maverick 28N-13HZ - Plan A Rev 0

All data is in US Feet unless otherwise stated. Directions and Coordinates are relative to True North Reference.
Vertical Depths are relative to RKB=17 @ 5076.00ft (Drilling Rig). Northing and Easting are relative to Maverick 28N-13HZ
Coordinate System is US State Plane 1983, Colorado Northern Zone using datum North American Datum 1983, ellipsoid GRS 1980

Projection method is Lambert Conformal Conic (2 parallel)
Central Meridian is -105.50°, Longitude Origin:0.000000°, Latitude Origin:40.783333°
False Easting: 3,000,000.00ft, False Northing: 1,000,000.00ft, Scale Reduction: 0.99995700

Grid Coordinates of Well: 1,323,534.43 ft N, 3,216,856.96 ft E
Geographical Coordinates of Well: 40° 13' 08.01" N, 104° 43' 24.36" W
Grid Convergence at Surface is: 0.50°

Based upon Minimum Curvature type calculations, at a Measured Depth of 11,793.96ft
the Bottom Hole Displacement is 4,531.80ft in the Direction of 353.00° (True).

Magnetic Convergence at surface is: -8.20° (26 September 2012, , BGGM2012)

