

Décollement
Consulting
Inc.



Scale 1:240 (5"=100') Imperial
Measured Depth Log

Well Name: ECGS # 6-19D WPD003-1
Location: SE/SE Sec.6,T11N,R52W Logan County, Colorado
License Number: 05-075-09409
Spud Date: 10/24/2012
Surface Coordinates: 653' FSL, 716' FEL
Region: West Peetz
Drilling Completed: 10/28/2012

Bottom Hole
Coordinates:
Ground Elevation (ft): 4553' K.B. Elevation (ft): 4566'
Logged Interval (ft): 50' To: 5285' Total Depth (ft): 5285'
Formation: Dakota D Sandstone.
Type of Drilling Fluid: WBM

Printed by MUD.LOG from WellSight Systems 1-800-447-1534 www.WellSight.co

OPERATOR

Company: East Cheyenne Gas Storage LLC.
Address: 10901 W. Toller Dr. Suite 200
Littleton, CO. 80127

GEOLOGIST

Name: Leo Carrasco
Company: Decollement Consulting, Inc
Address: 13300 Braun Rd.
Golden, CO 80401

ROCK TYPES

Cmt
 Anhy
 Bent
 Brec
 Cht
 Clyst
 Coal

Congl
 Dol
 Gyp
 Igne
 Lmst
 Meta
 Mrlst

Salt
 Shale
 Shcol
 Shgy
 Sltst
 Ss
 Till

Sh--green
 Sh red-brn
 Sh gy-red
 Shgy
 Sltst--gray
 Sltst-gy red

ACCESSORIES

MINERAL

Anhy
 Arggrn
 Arg
 Bent
 Bit
 Brecfrag
 Calc
 Carb
 Chtdk
 Chtlt
 Dol
 Feldspar
 Ferrpel
 Ferr
 Glau
 Gyp
 Hvymin
 Kaol
 Marl

Minxl
 Nodule
 Phos
 Pyr
 Salt
 Sandy
 Silt
 Sil
 Sulphur
 Tuff

FOSSIL

Algae
 Amph
 Belm
 Bioclst
 Brach
 Bryozoa
 Cephal
 Coral

Crin
 Echin
 Fish
 Foram
 Fossil
 Gastro
 Oolite
 Ostra
 Pelec
 Pellet
 Pisolite
 Plant
 Strom

STRINGER

Anhy
 Arg
 Bent
 Coal
 Dol

Gyp
 Ls
 Mrst
 Sltstrg
 Ssstrg

TEXTURE

Boundst
 Chalky
 Cryxln
 Earthy
 Finexln
 Grainst
 Lithogr
 Microxln
 Mudst
 Packst
 Wackest

OTHER SYMBOLS

POROSITY

Earthy
 Fenest
 Fracture
 Inter
 Moldic
 Organic
 Pinpoint
 Vuggy
 Csg shoe right

Csg shoe left
 Cmt

SORTING

Well
 Moderate
 Poor

ROUNDING

Rounded

Subrnd
 Subang
 Angular

OIL SHOW

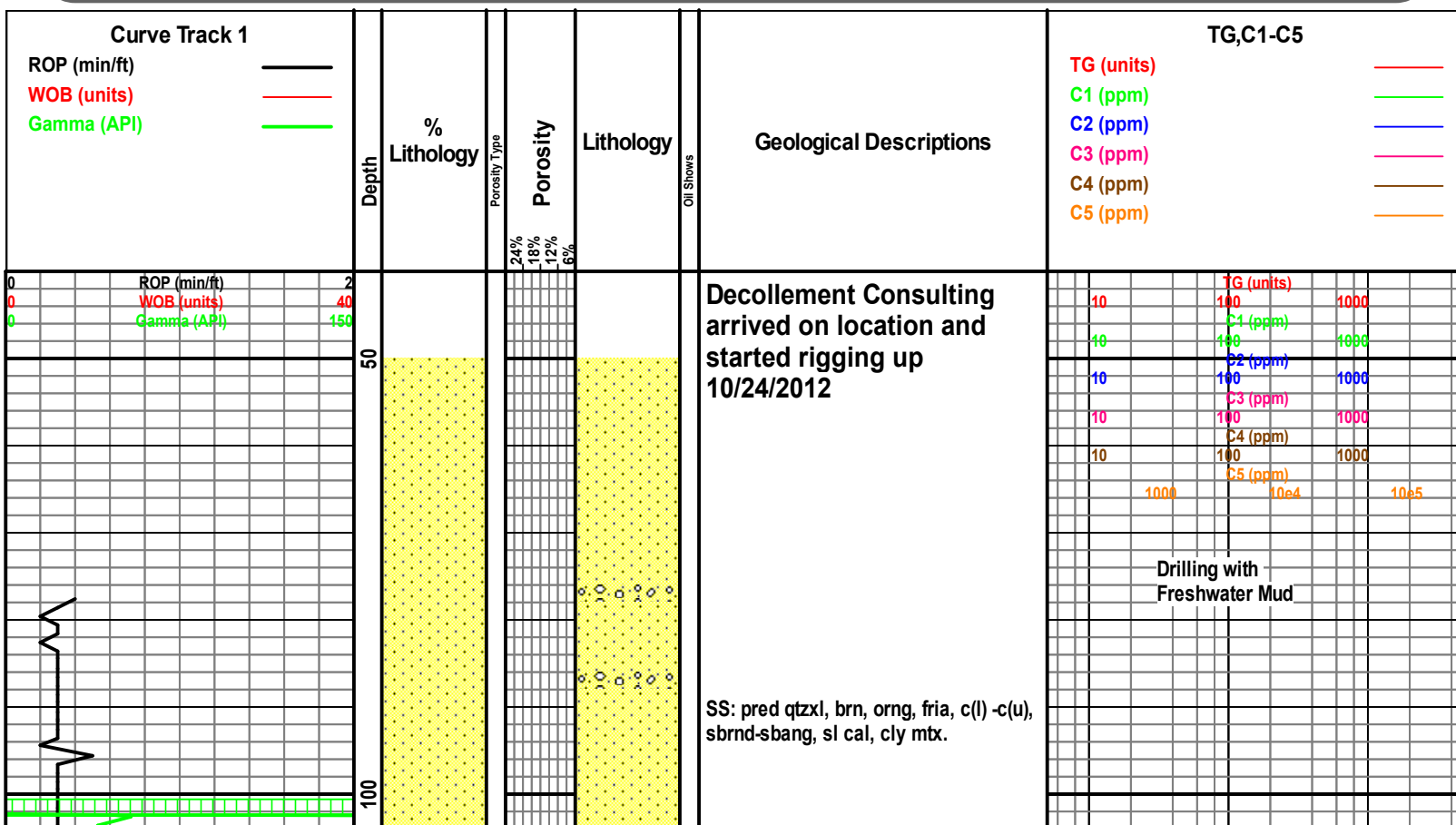
Even
 Spotted
 Ques
 Dead

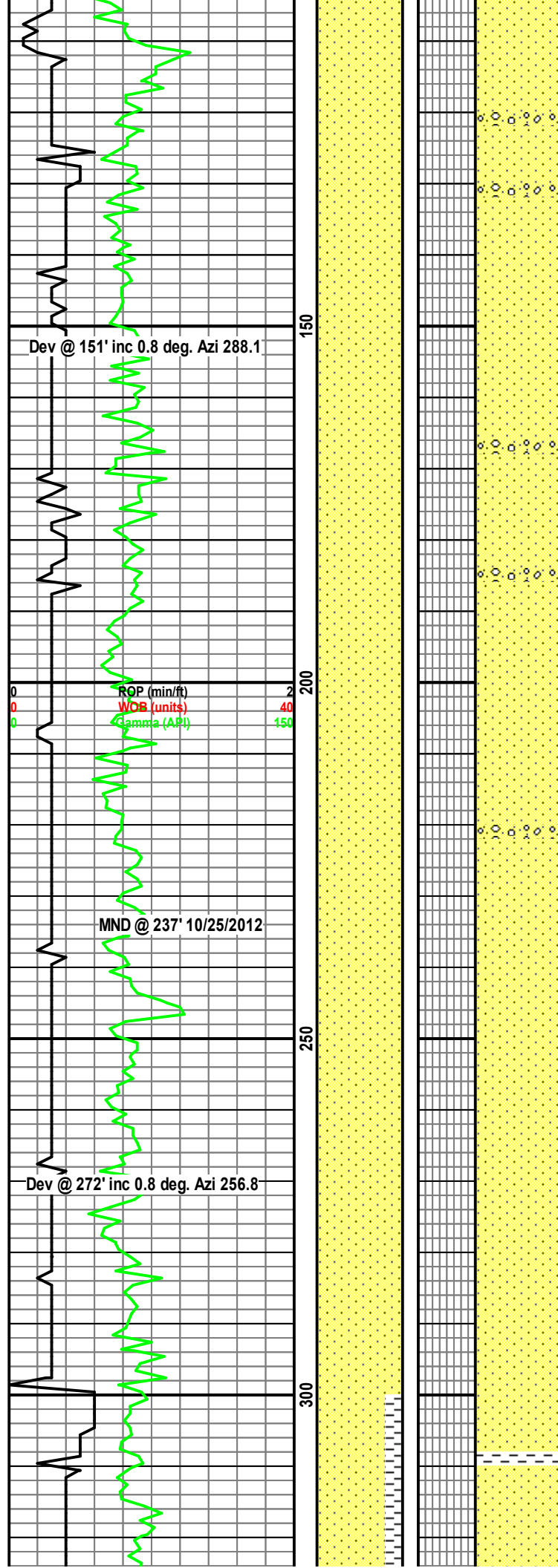
INTERVAL

Core
 Dst

EVENT

Csg shoe right
 Csg shoe left
 Rft
 Sidewall
 Iso-tube





SS: pred qtzxl, lt brn, orng, fria, c(l)
-c(u), sbrnd-sbang, sl cal, cly mtx.

prog. Top White River @
160'

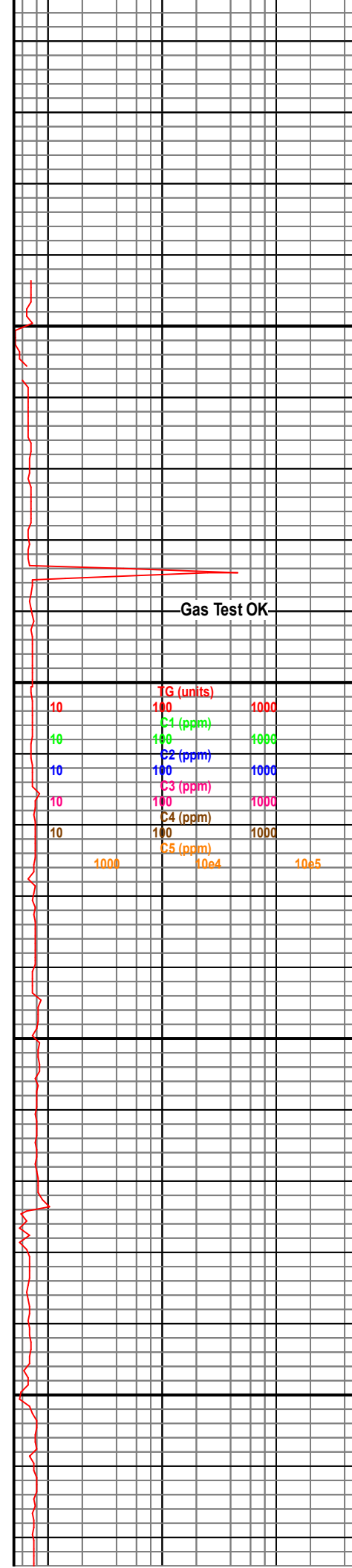
SS: pred qtzxl, lt brn, orng, fria, c(l)
-c(u), sbrnd-sbang, sl cal, cly mtx.

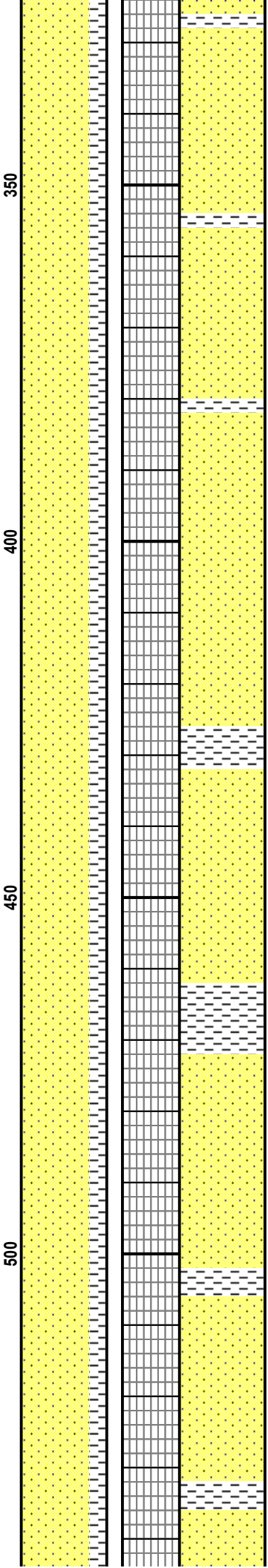
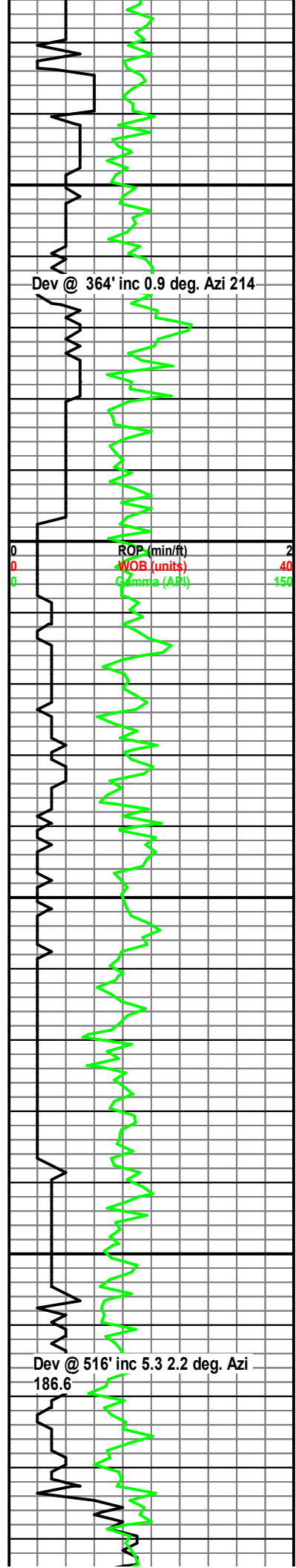
SS: pred qtzxl, lt brn, orng, fria, c(l)
-c(u), sbrnd-sbang, sl cal, cly mtx.

prog. Top Laramie @ 240'

SS: pred qtzxl, wh, orng, fria, f(u) -m(l),
sbrnd-sbang, sl cal, cly mtx.

SS: pred qtzxl, wh, orng, fria, f(u) -m(l),
sbrnd-sbang, sl cal, cly mtx.





SS: pred qtzxl, wh, orng, fria, f(u) -m(l), sbrnd-sbang, sl cal, cly mtx.

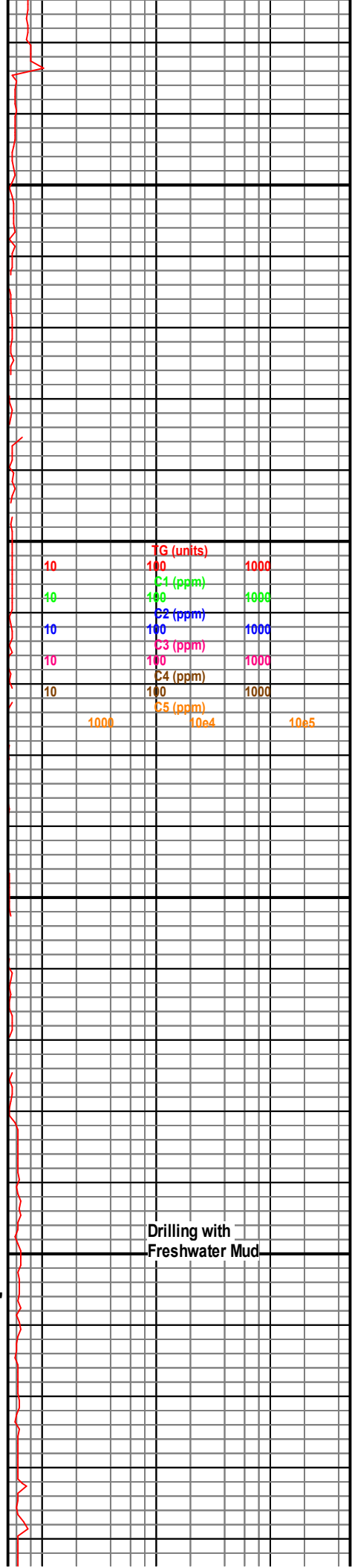
CLYST: yel, sl sdy, sl calc, plas, rthy.

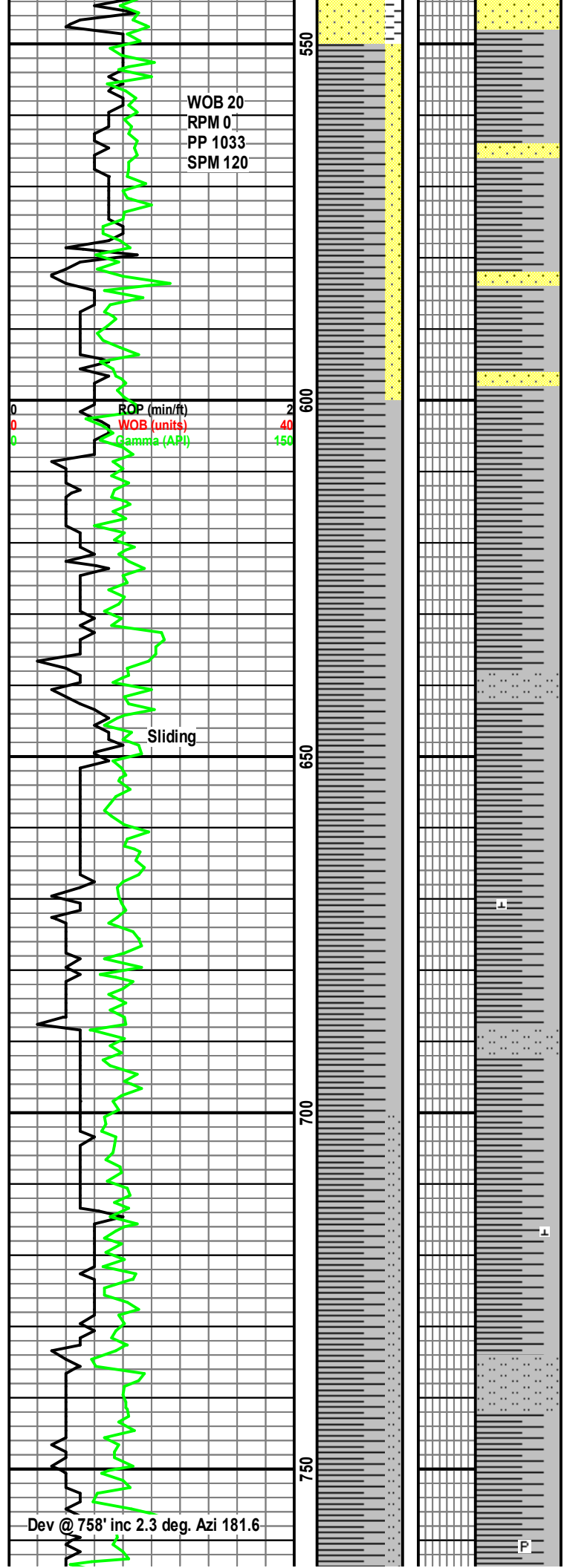
SS: pred qtzxl, wh, orng, fria, f(u) -m(l), sbrnd-sbang, sl cal, cly mtx.

CLYST: yel, sl sdy, sl calc, plas, rthy.

prog. Fox Hills Shale @ 510'

SS: pred qtzxl, wh, orng, fria, f(u) -m(l),





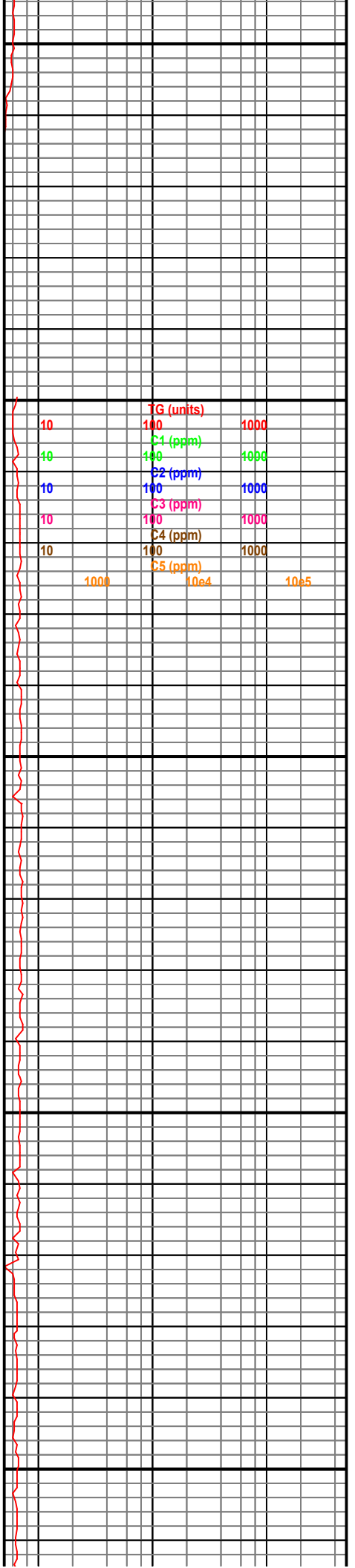
sbrnd-sbang, sl cal, cly mtx.

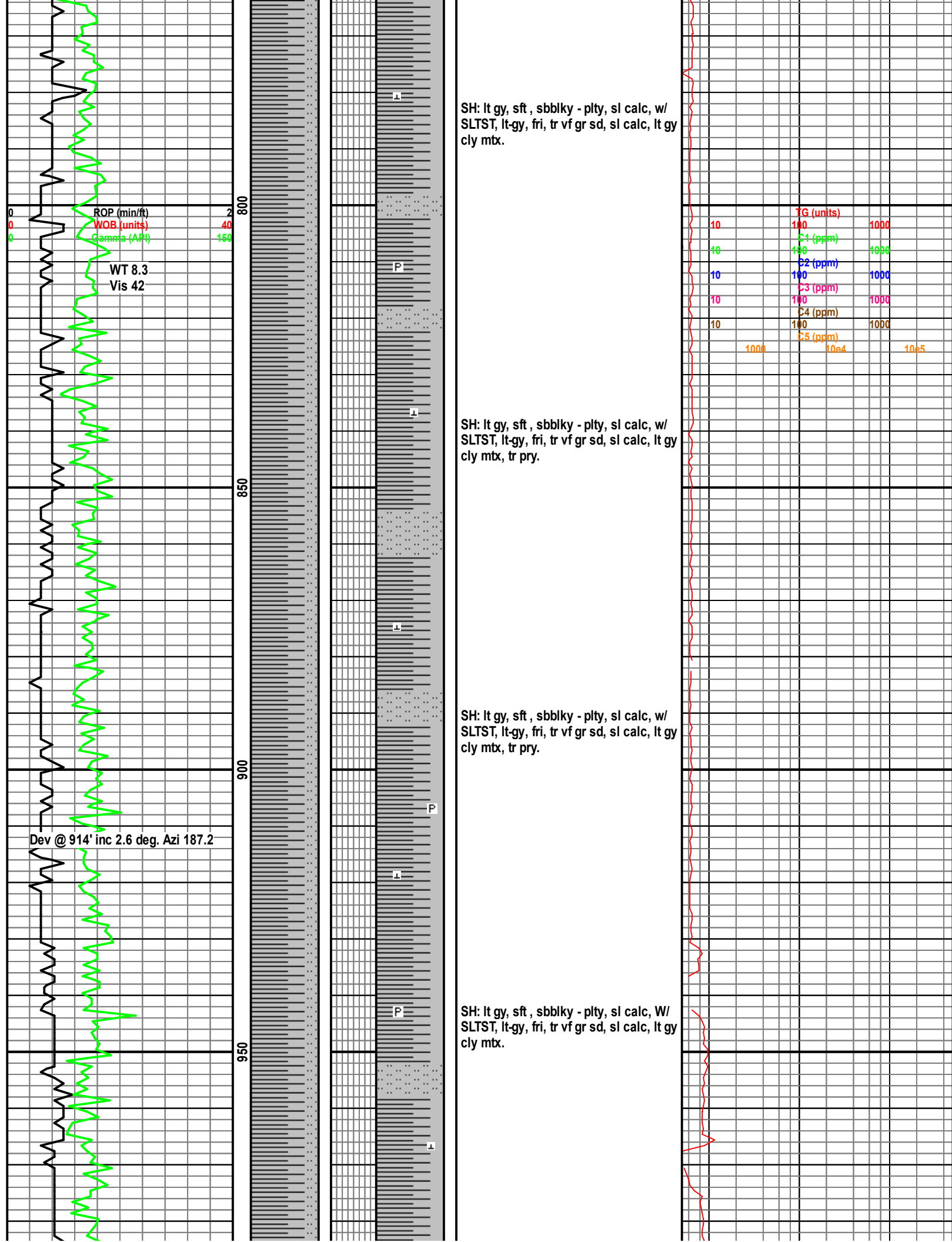
SH: lt gy, sft , sbblky - plty, sl calc, w/
SLTST, lt-gy, fri, tr vf gr sd, sl calc, lt gy
cly mtx, intb w/SS lt gy, mod firm,
f(u)gr, sbang -sbrnd, shly mtx, p srt, sl
calc cmt, p por, tr pry.

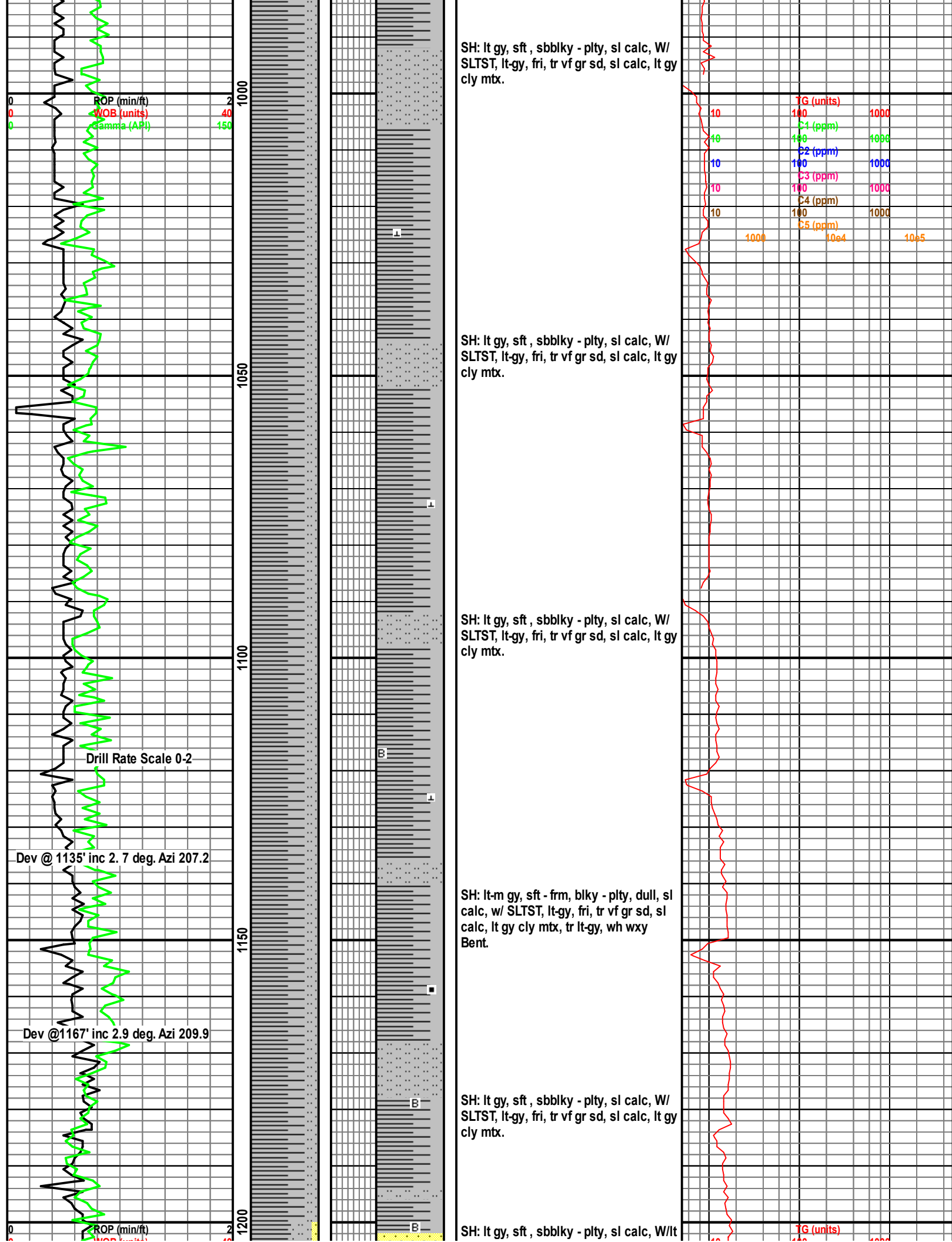
prog. Fox Hills Sandstone
@ 595'

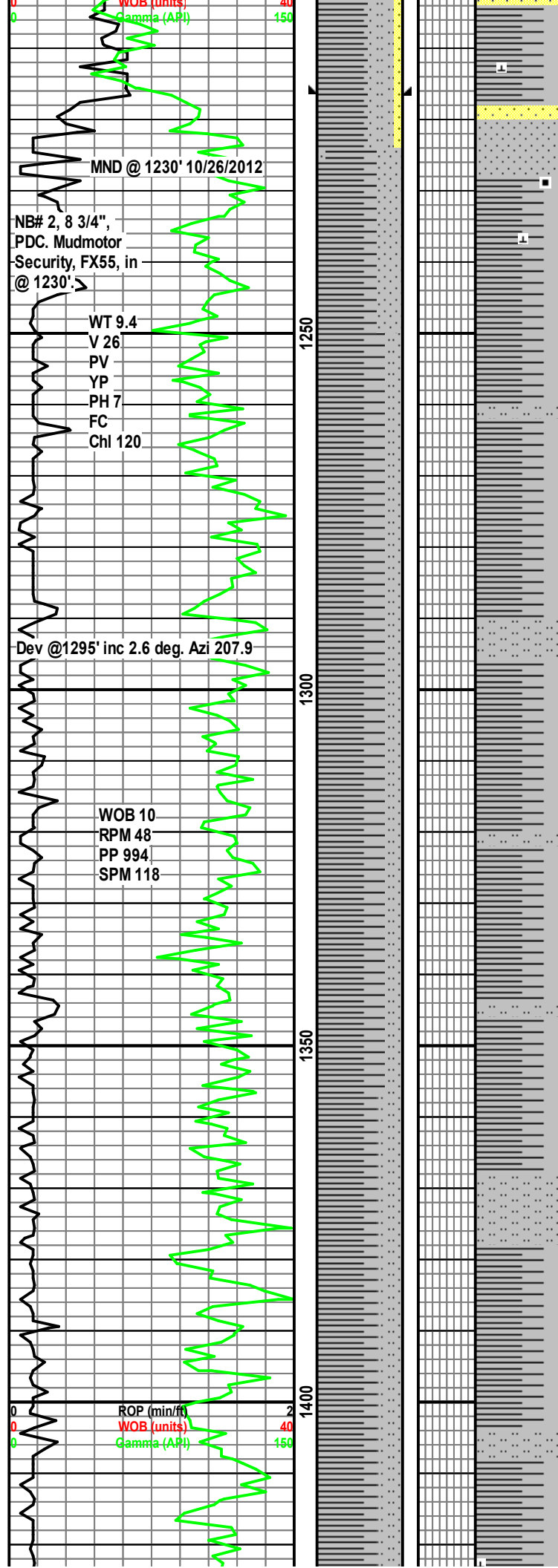
SH: lt gy, sft , sbblky - plty, sl calc, w/
SLTST, lt-gy, fri, tr vf gr sd, sl calc, lt gy
cly mt

SH: lt gy, sft , sbblky - plty, sl calc, w/
SLTST, lt-gy, fri, tr vf gr sd, sl calc, lt gy
cly mtx.









gy, lt brn, mod firm, f(u)-m(l) gr,
sbgang-sbrnd, shly mtx, p srt, sl calc
cmt, p por SS.

Set 9 5/8" casing at 1216'

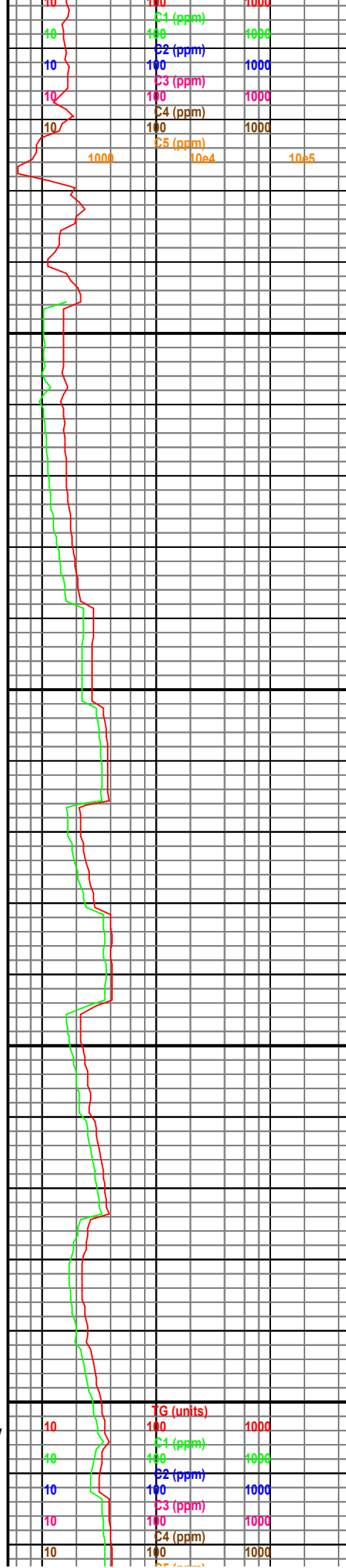
Top Pierre @ 1220' MD.

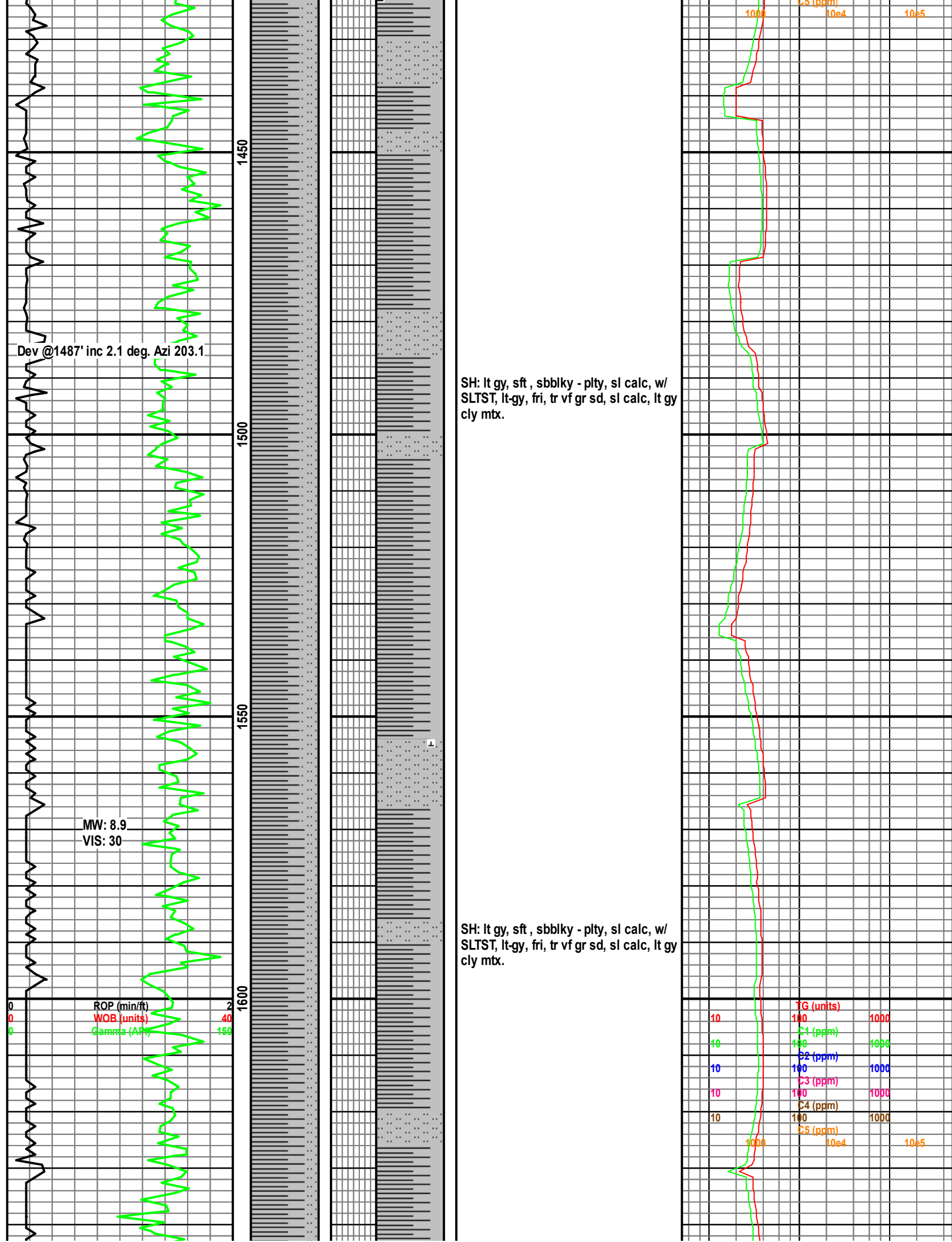
SH: lt-m gy, sft - frm, blkly - plty, dull, sl
calc, w/ SLTST, lt-gy, fri, tr vf gr sd, sl
calc, lt gy cly mtx.

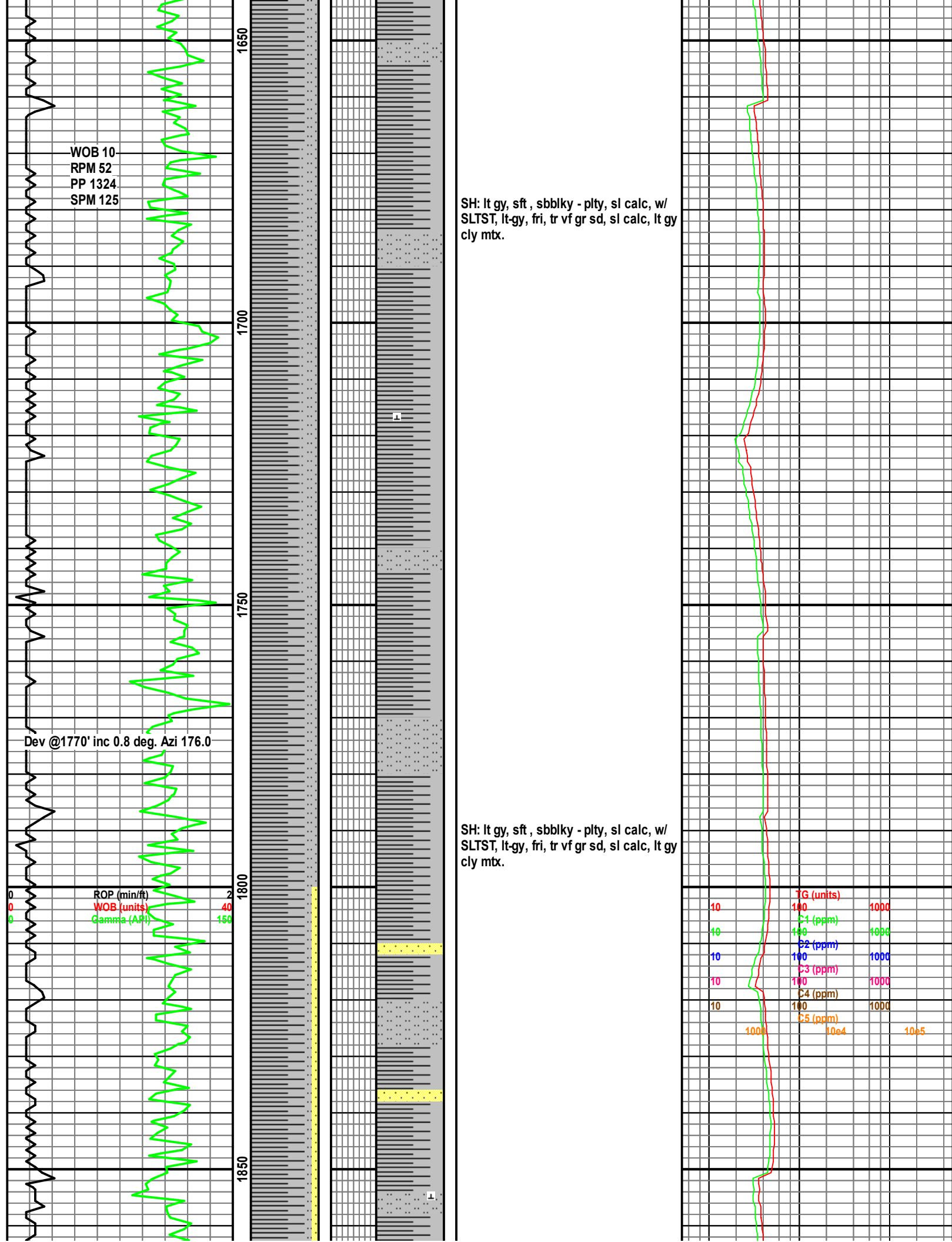
SH: lt-m gy, sft - frm, blkly - plty, dull, sl
calc, w/ SLTST, lt-gy, fri, tr vf gr sd, sl
calc, lt gy cly mtx.

SH: lt-m gy, sft - frm, blkly - plty, dull, sl
calc, w/ SLTST, lt-gy, fri, tr vf gr sd, sl
calc, lt gy cly mtx.

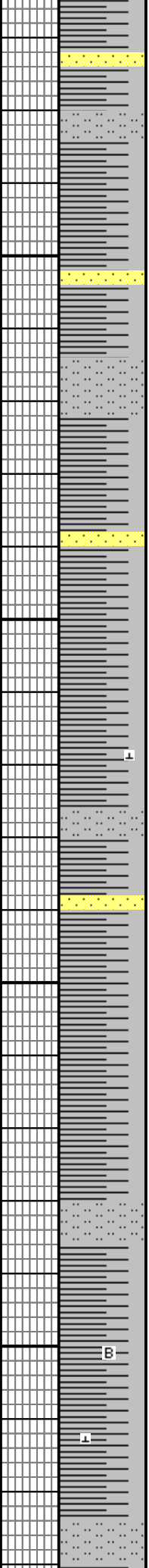
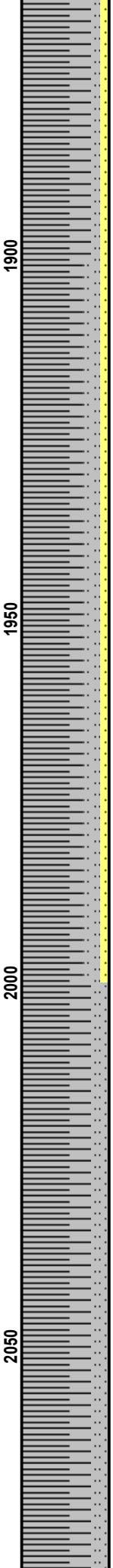
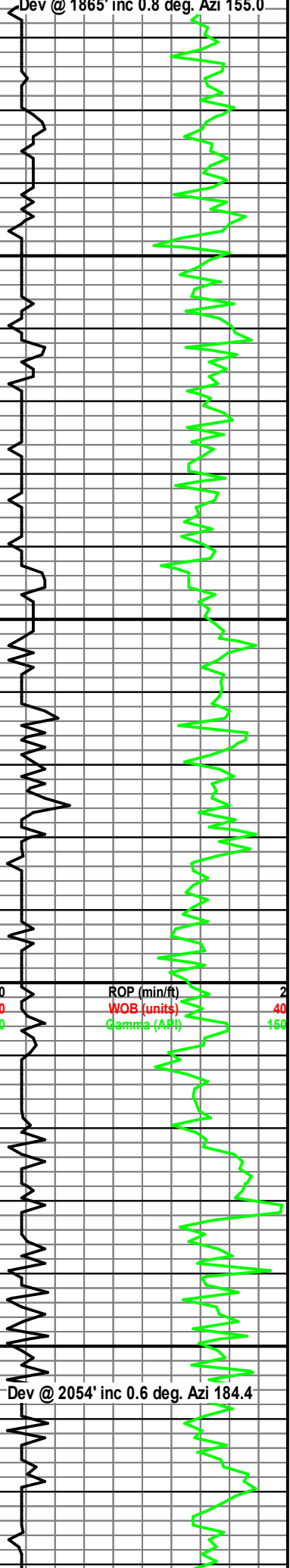
SH: lt gy, sft, sbblkly - plty, sl calc, w/
SLTST, lt-gy, fri, tr vf gr sd, sl calc, lt gy
cly mtx.





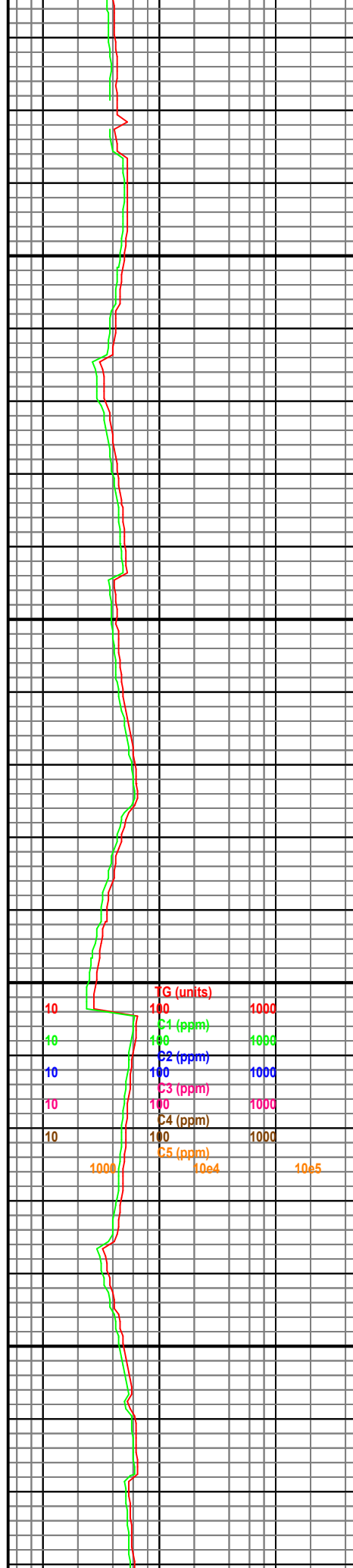


Dev @ 1865' inc 0.8 deg. Azi 155.0

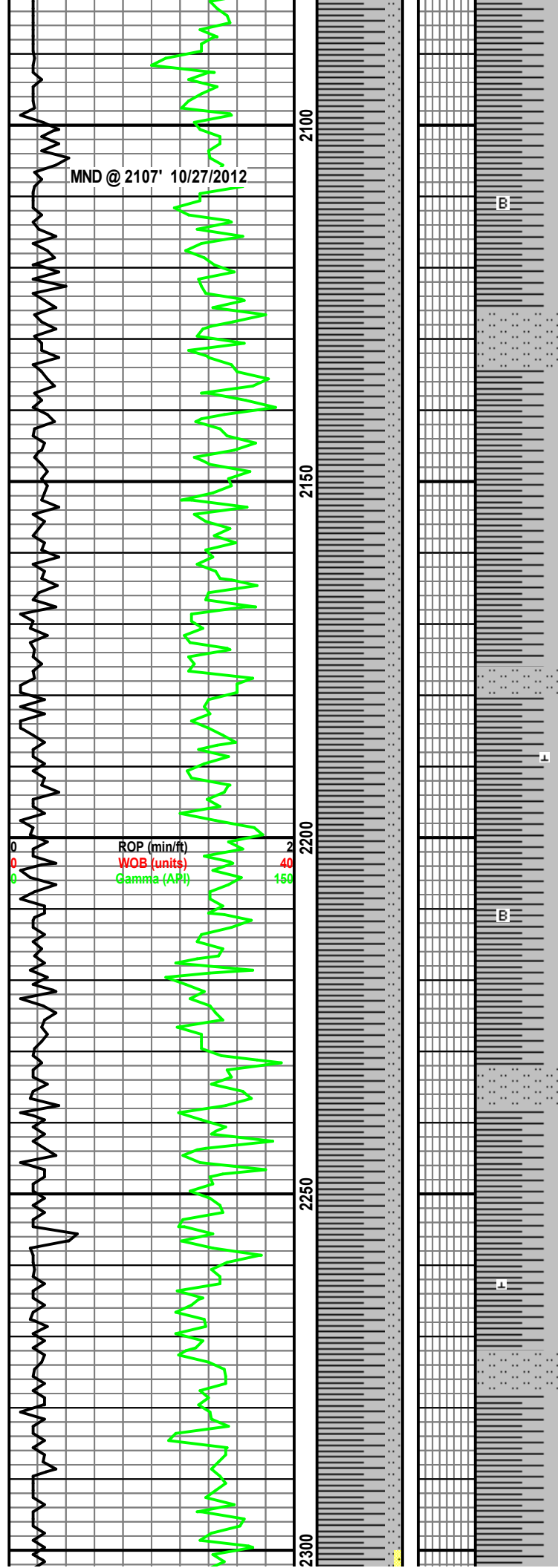


SH: lt gy, sft frm, blk y - plty, dull, sl calc. SS: lt gy, lt brn, mod firm, fri ip, vf(u)- f(l) gr, sbang- sbrnd, shly mtx, p srt, sl calc cmt, p por.

SH: lt gy, sft frm, blk y - plty, dull, sl calc. SS: lt gy, lt brn, mod firm, fri ip, vf(u)- f(l) gr, sbang- sbrnd, shly mtx, p srt, sl calc cmt, p por.



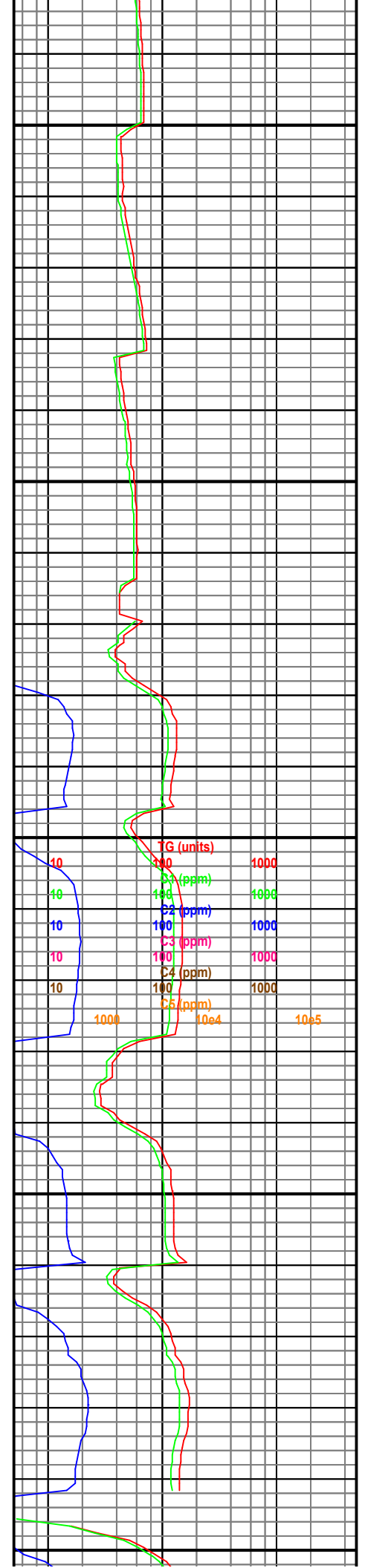
Dev @ 2054' inc 0.6 deg. Azi 184.4

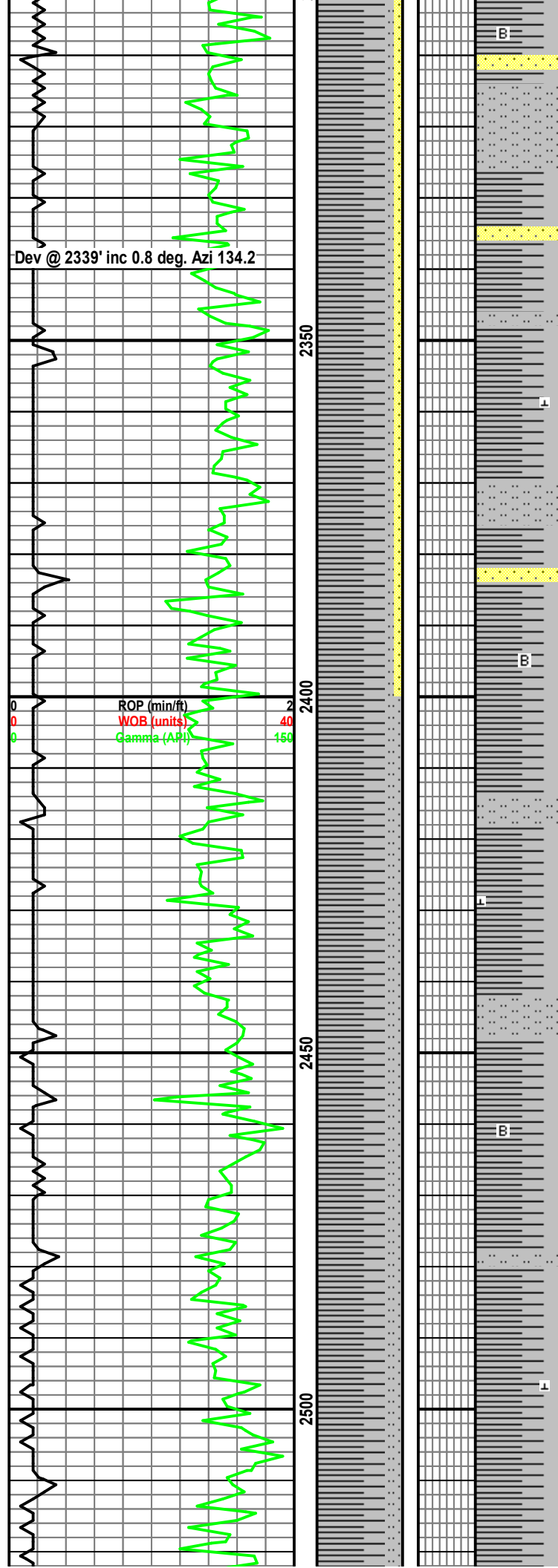


SH: m gy, sft - frm, blk - plty, dull, sl
calc, w/ SLTST, lt-gy, fri, tr vf gr sd, sl
calc, lt gy cly mtx, tr lt-gy, wh wxy
Bent.

SH: m gy, sft - frm, blk - plty, dull, sl
calc, w/ SLTST, lt-gy, fri, tr vf gr sd, sl
calc, lt gy cly mtx, tr lt-gy, wh wxy
Bent.

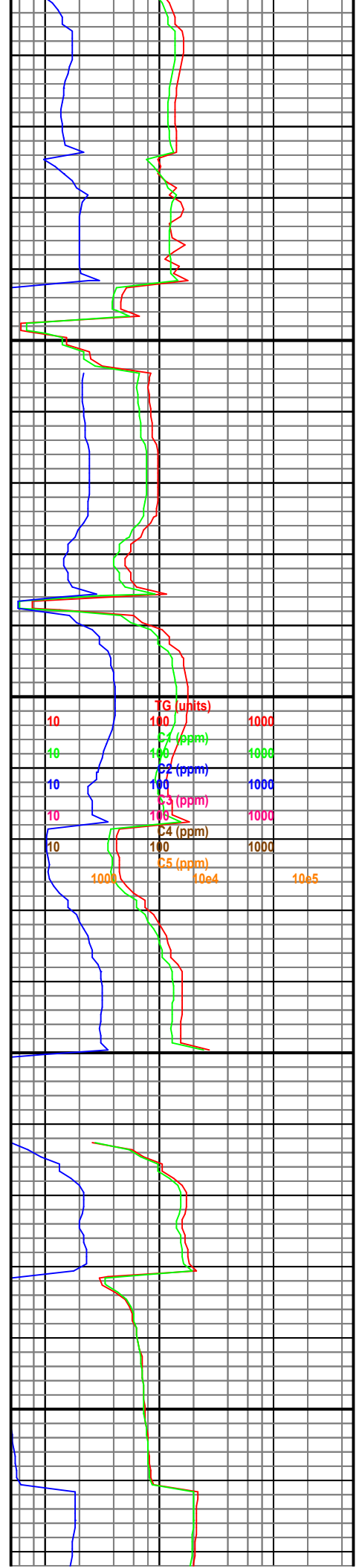
SH: m gy, sft - frm, blk - plty, dull, sl
calc, w/ SLTST, lt-gy, fri, tr vf gr sd, sl
calc, lt gy cly mtx, tr lt-gy, wh wxy
Bent.

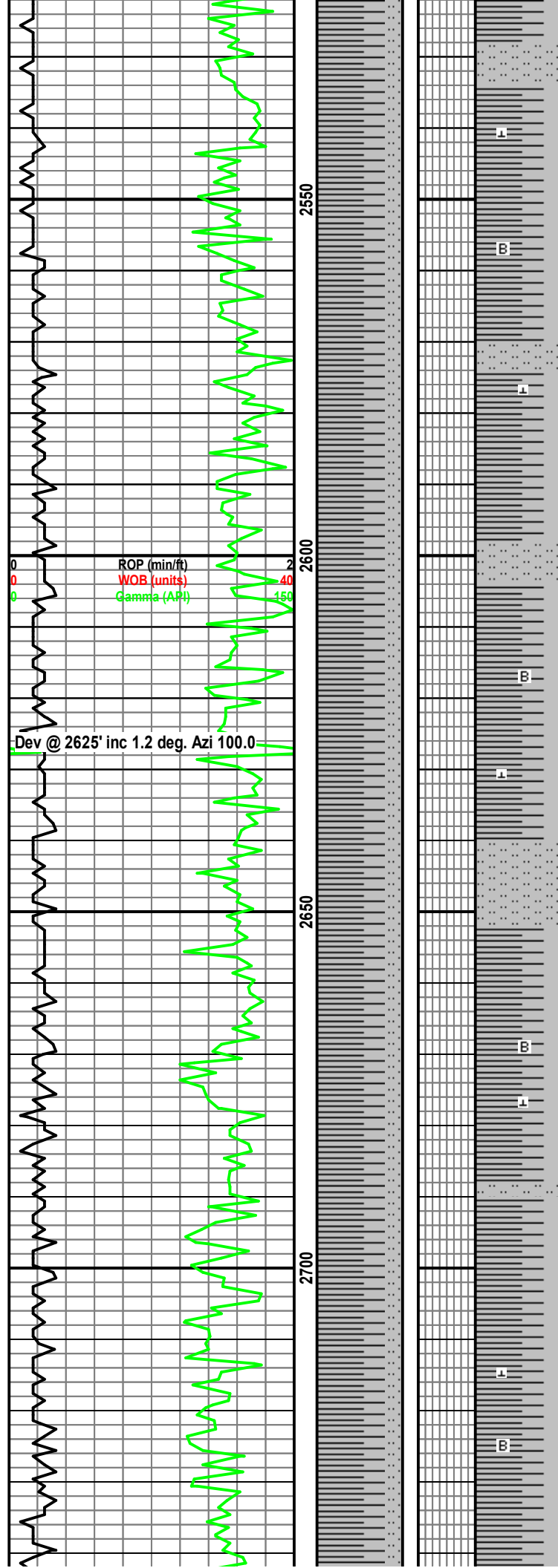




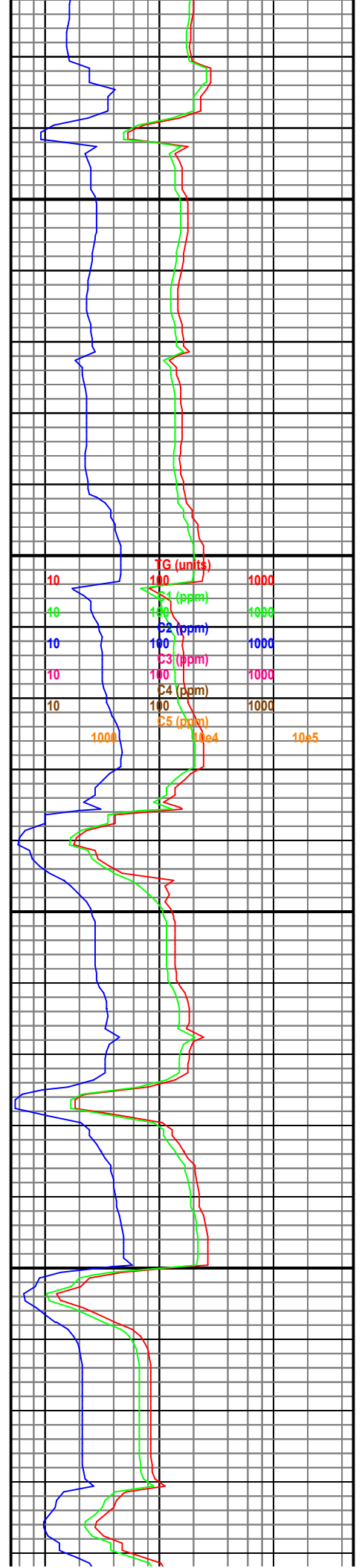
SH: lt gy, sft frm, blk - plty, dull, sl
calc. SS: lt gy, lt brn, mod firm, fri ip,
vf(u)- f(l) gr, sbang- sbrnd, shly mtx, p
srt, sl calc cmt, p por.

SH: m gy, sft - frm, blk - plty, dull, sl
calc, w/ SLTST, lt-gy, fri, tr vf gr sd, sl
calc, lt gy cly mtx, tr lt-gy, wh wxy
Bent.

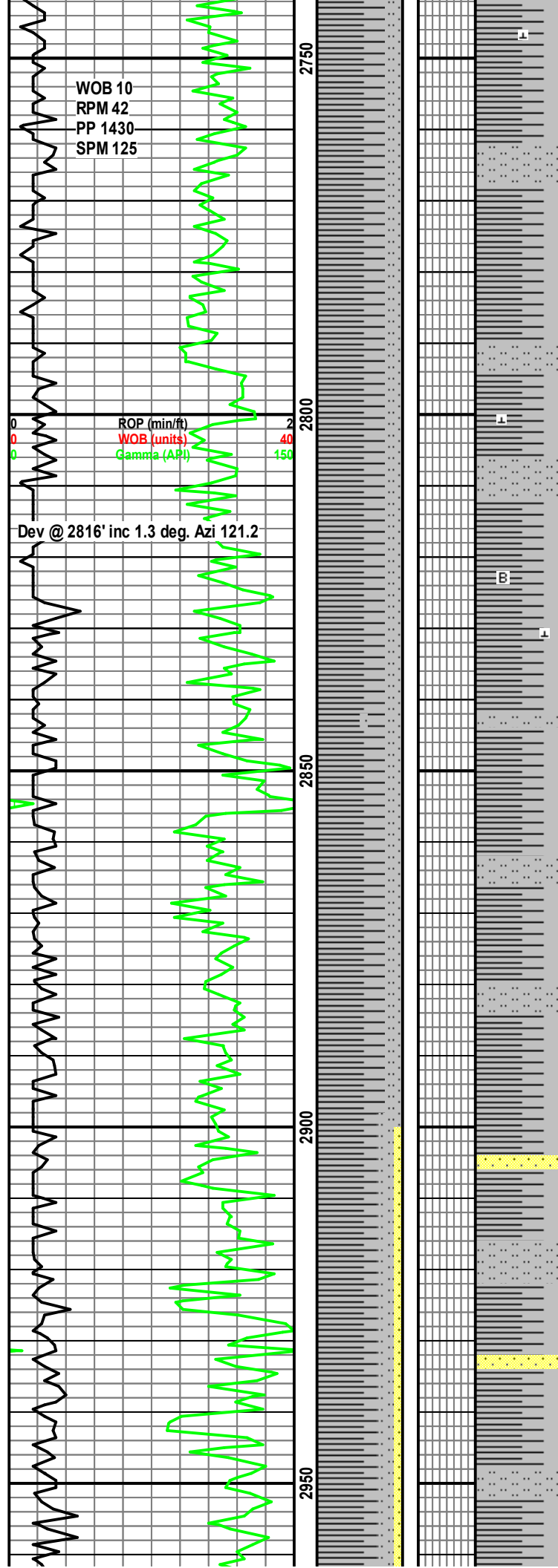




SH: m gy, sft - frm, blk - plty, dull, sl
calc, w/ SLTST, lt-gy, fri, tr vf gr sd, sl
calc, lt gy cly mtx, tr lt-gy, wh wxy
Bent.

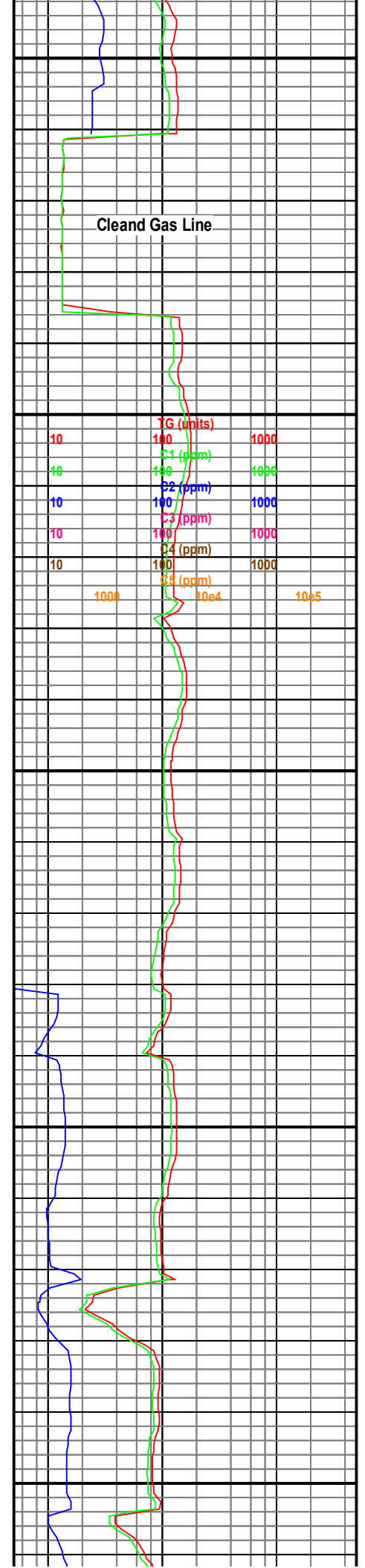


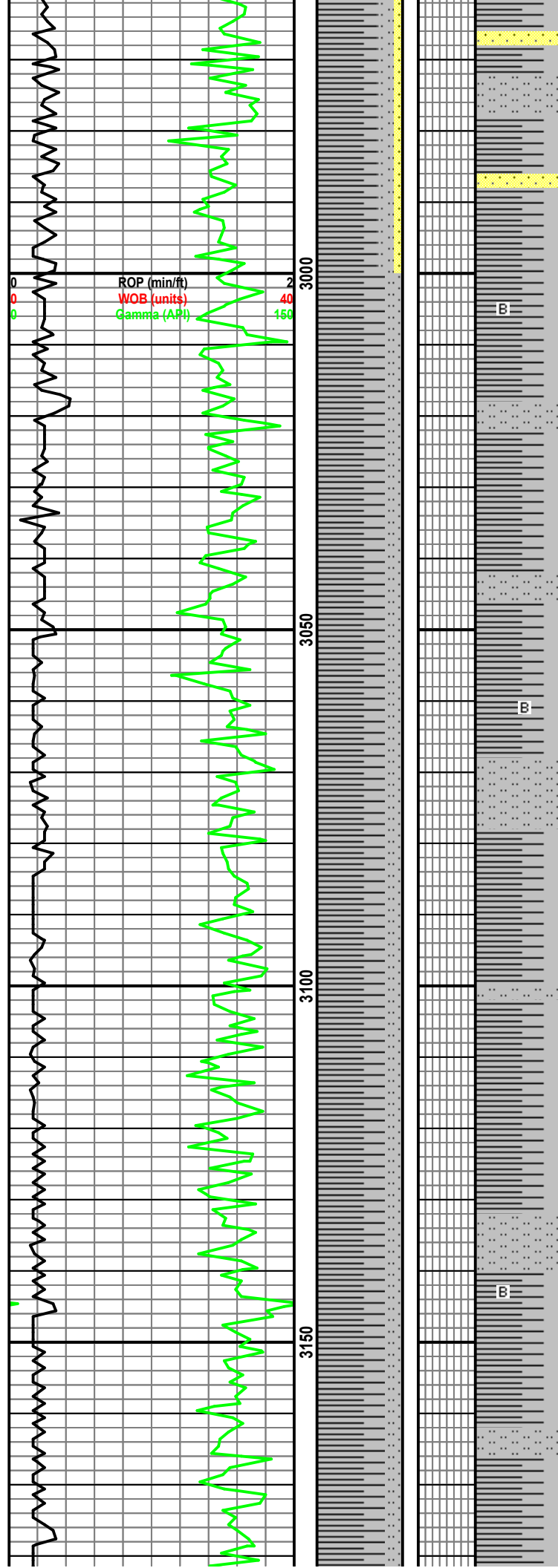
SH: m gy, sft - frm, blk - plty, dull, sl
calc, w/ SLTST, lt-gy, fri, tr vf gr sd, sl
calc, lt gy cly mtx, tr lt-gy, wh wxy
Bent.



SH: m gy, sft - frm, blk - plty, dull, sl
calc, w/ SLTST, lt-gy, fri, tr vf gr sd, sl
calc, lt gy cly mtx, tr lt-gy, wh wxy
Bent.

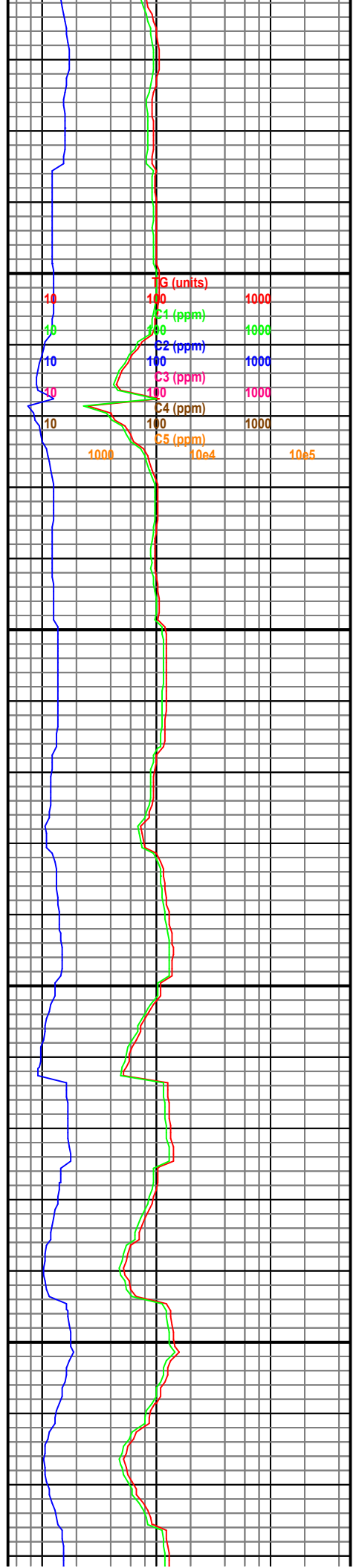
SH: m gy, sft - frm, blk - plty, dull, sl
calc, w/ SLTST, lt-gy, fri, tr vf gr sd, sl
calc, lt gy cly mtx, tr lt-gy, wh wxy
Bent.





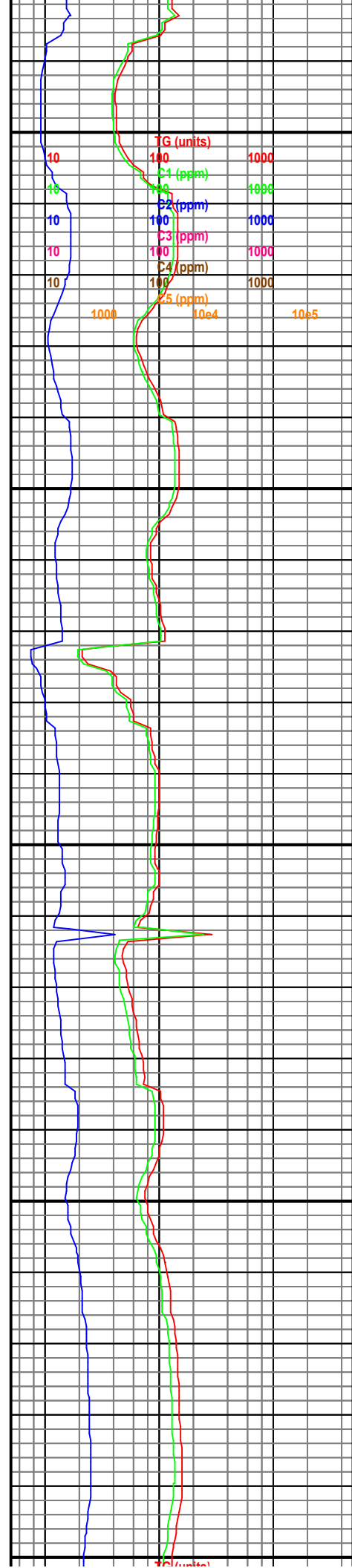
SH: lt gy, sft frm, blk - plty, dull, sl calc.
SS: lt gy, lt brn, mod firm, fri ip, vf(u)-f(l) gr, sbang-sbrnd, shly mtx, p srt, sl calc cmt, p por.

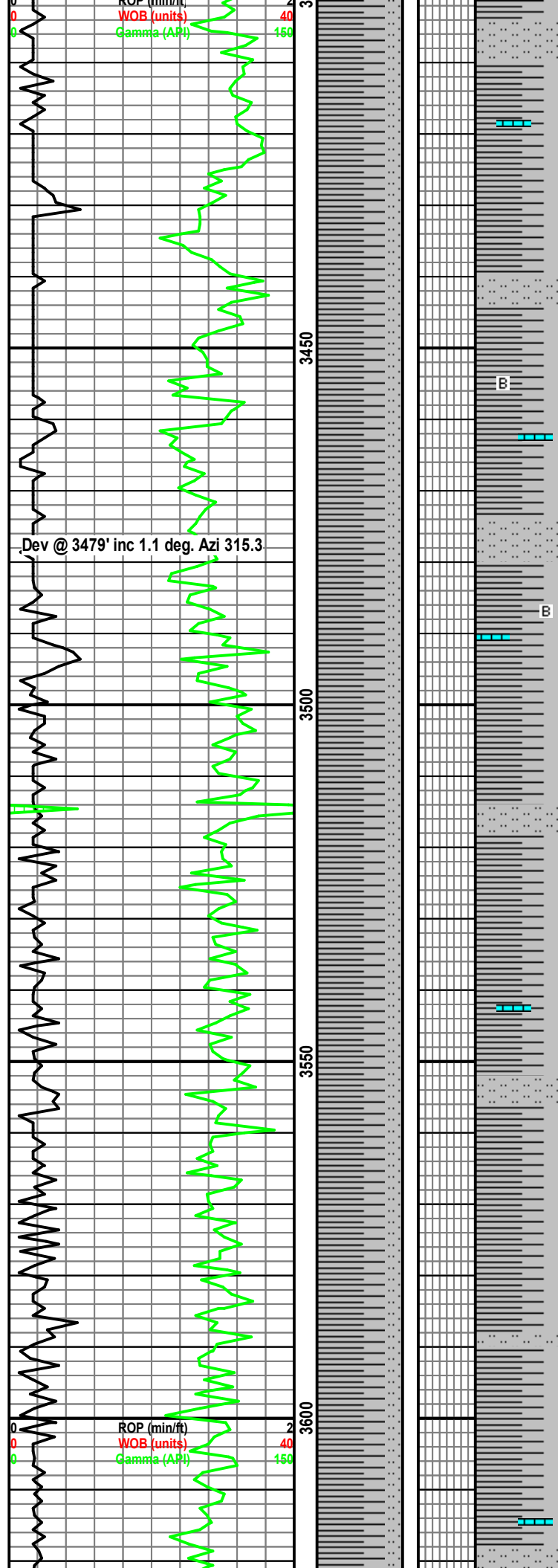
SH: m gy, sft - frm, blk - plty, dull, sl calc, w/ SLTST, lt-gy, fri, tr vf gr sd, sl calc, lt gy cly mtx.



[illegible]

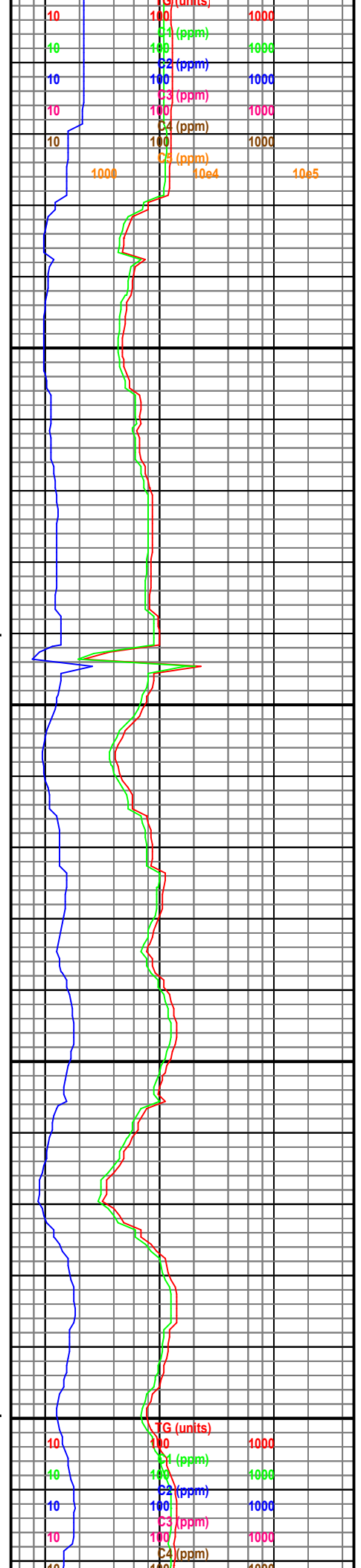
SH: m gy, sft - frm, blk - plty, dull, sl
calc, w/ SLTST, lt-gy, fri, tr vf gr sd, sl
calc, lt gy cly mtx.

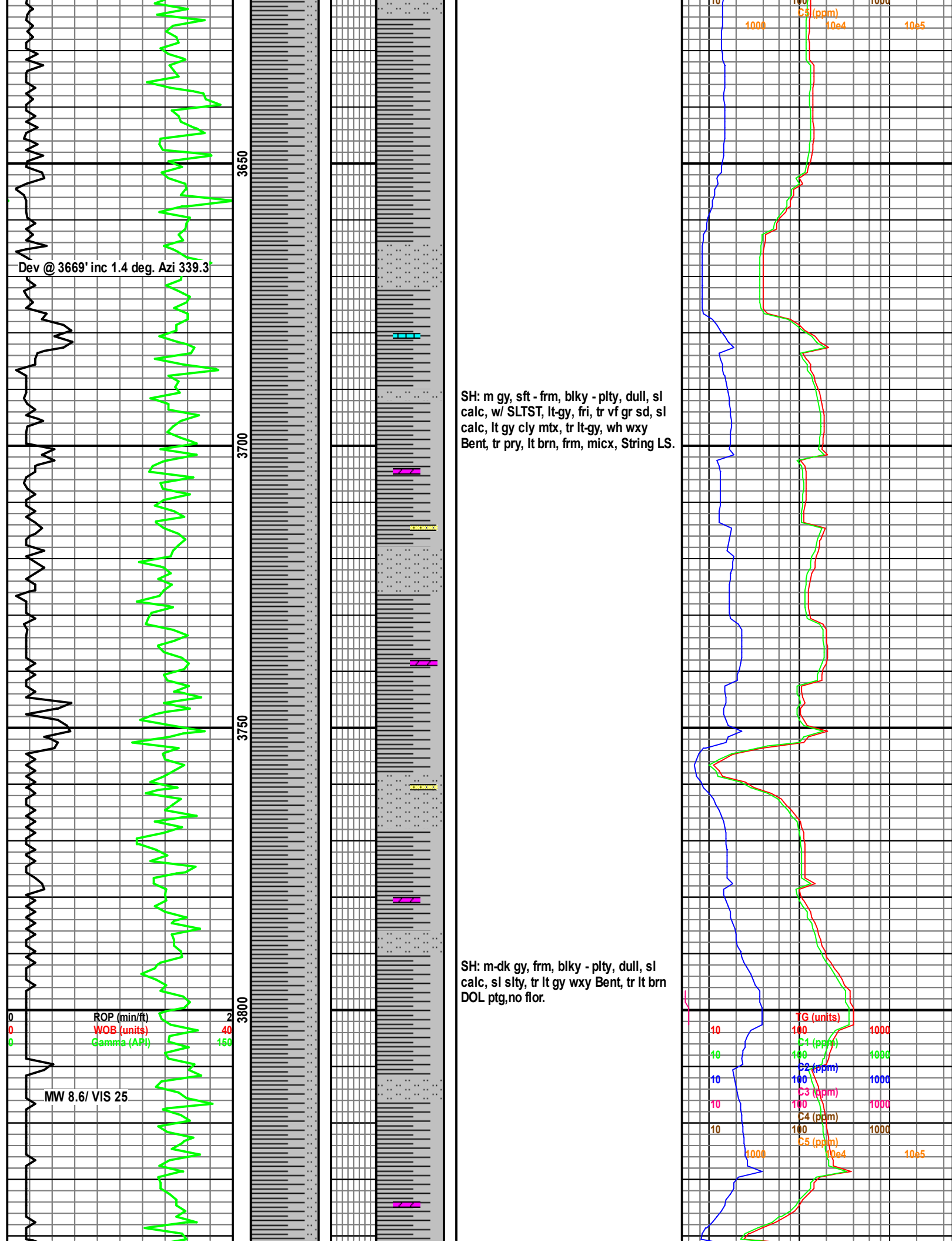


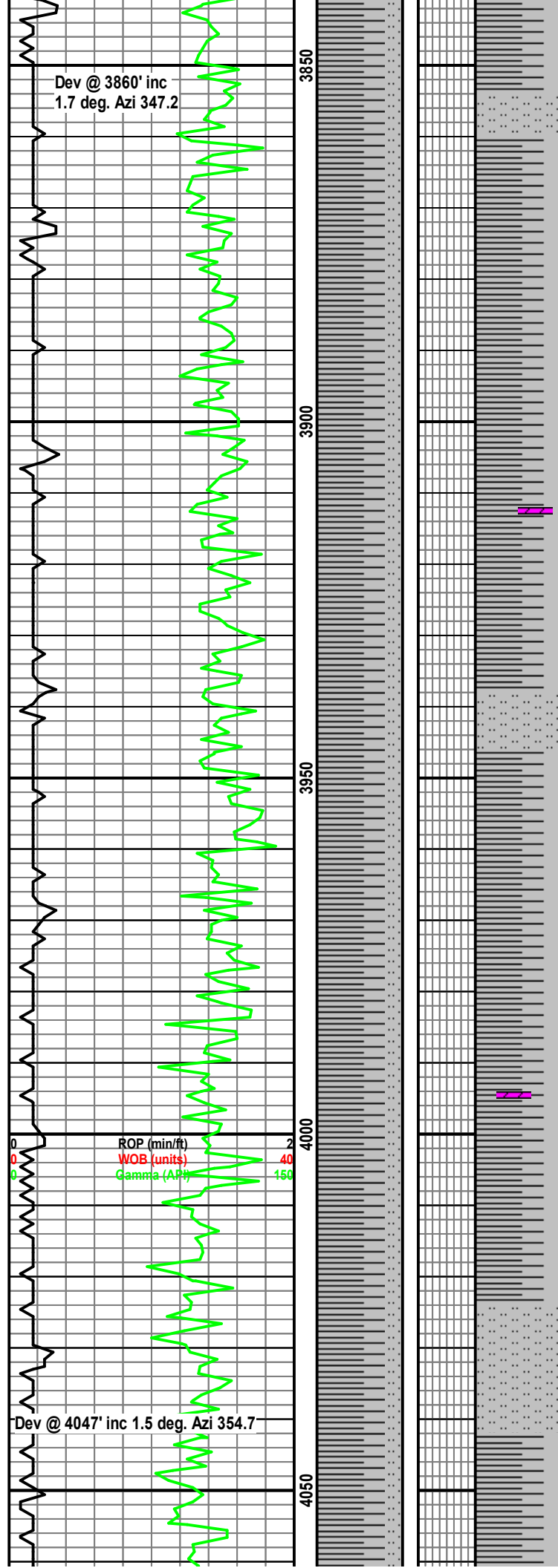


SH: m gy, sft - frm, blk - plty, dull, sl
calc, w/ SLTST, lt-gy, fri, tr vf gr sd, sl
calc, lt gy cly mtx, tr lt-gy, wh wxy
Bent, tr pry, lt brn, frm, micx, String LS.

SH: m gy, sft - frm, blk - plty, dull, sl
calc, w/ SLTST, lt-gy, fri, tr vf gr sd, sl
calc, lt gy cly mtx, tr lt-gy, wh wxy
Bent, tr pry, lt brn, frm, micx, String LS.

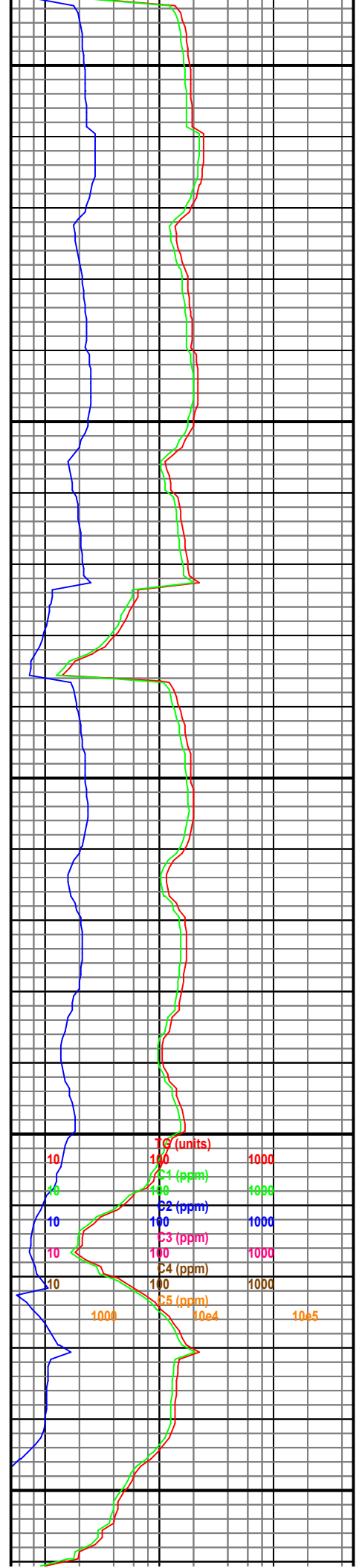


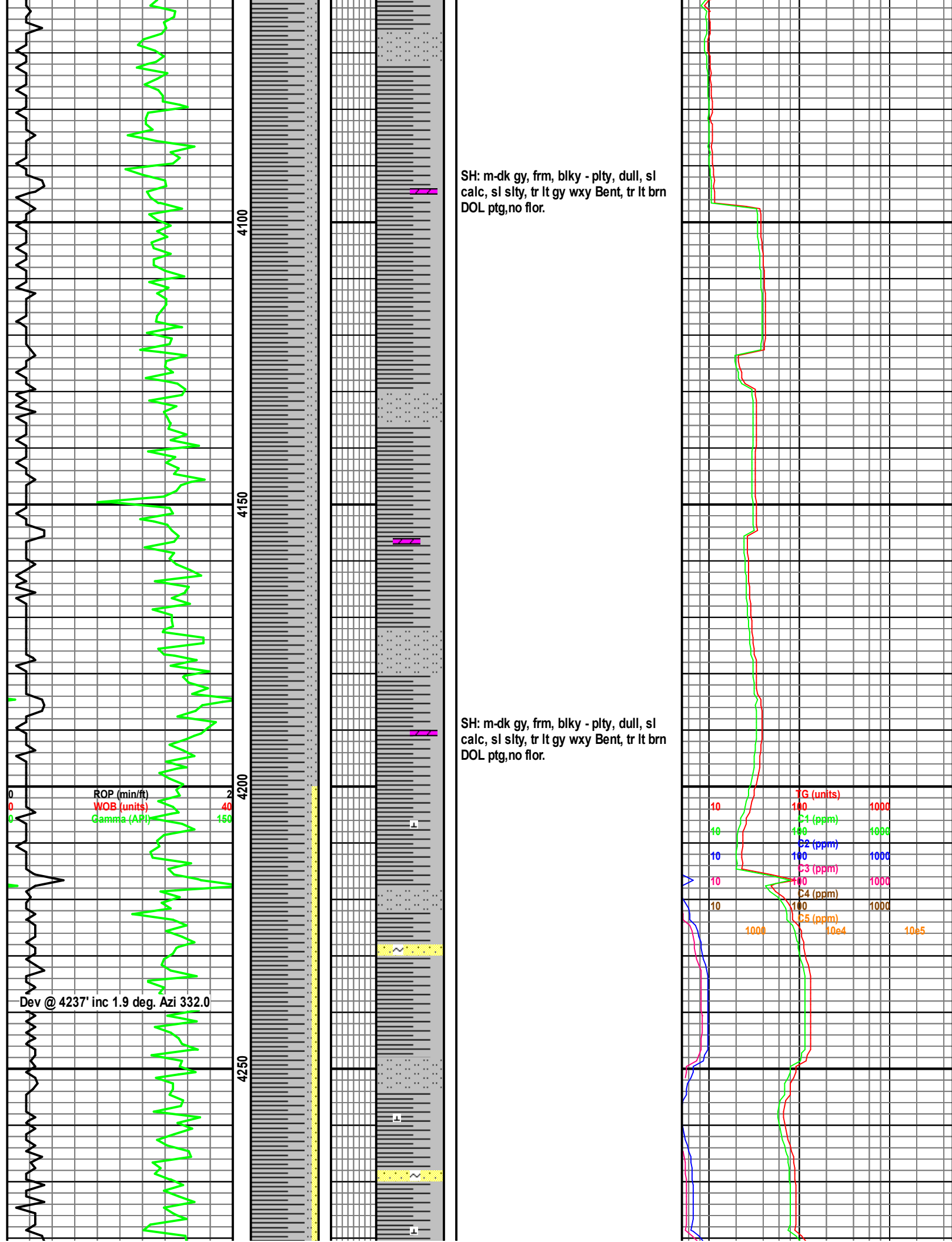


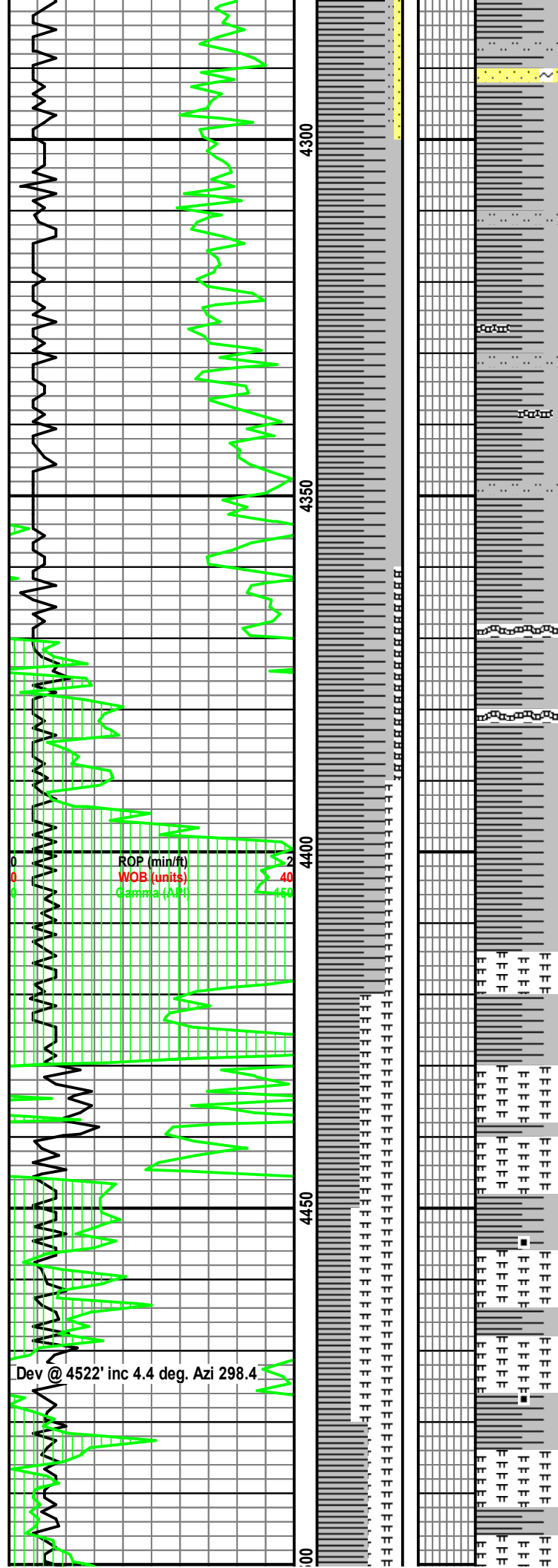


SH: m-dk gy, frm, blk - pty, dull, sl
calc, sl slty, tr lt gy wxy Bent, tr lt brn
DOL ptg, no flor.

SH: m-dk gy, frm, blk - pty, dull, sl
calc, sl slty, tr lt gy wxy Bent, tr lt brn
DOL ptg, no flor.







SH: m gy, frm, blk, dull, sl calc, sl slty, tr lt gy wxy Bent, intb w/SS: wh, clr, fri- mod firm, vf(u)-f(l) gr, sbang-sbrnd, mod srt, cly mtx, p vis por, sl calc, glau.

SH: lt-m gy, sft - frm, blk - plty, dull, sl calc, w/ SLTST, lt-gy, fri, tr vf gr sd, sl calc, lt gy cly mtx, tr lt-gy, wh wxy Bent, tr pry.

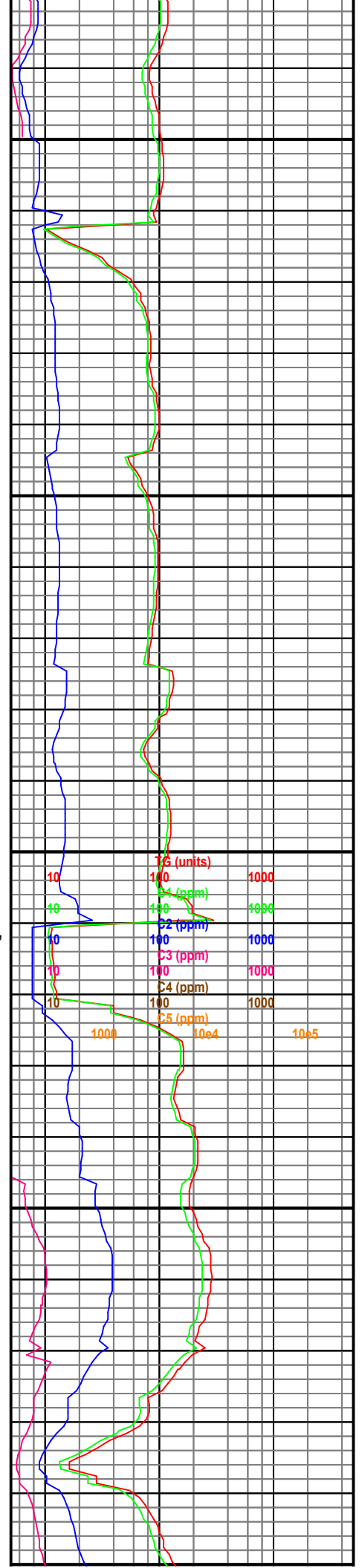
BENT: ltgy-off wh, sft, plty, wxy, yel mnrl flr.

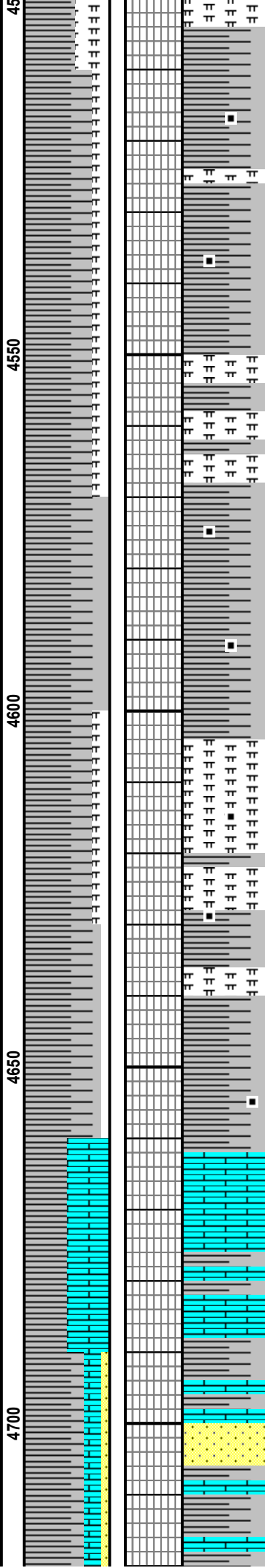
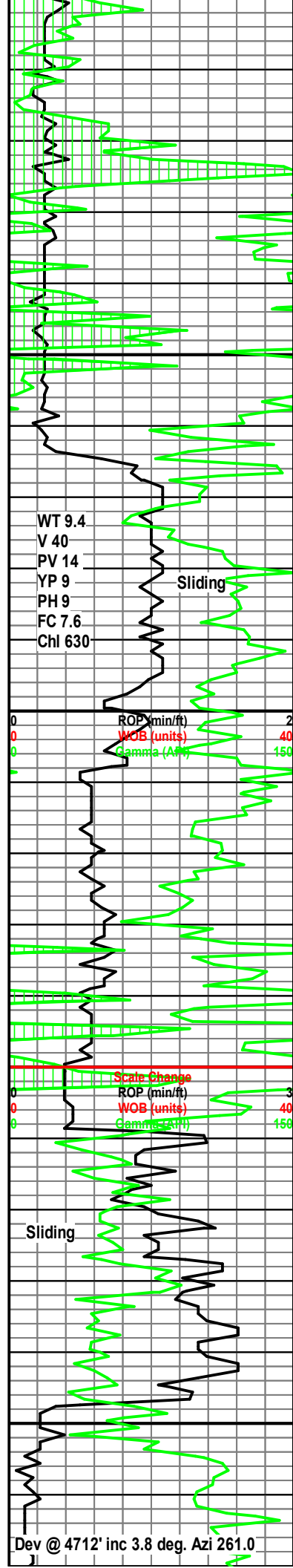
Chalky Marlst: lt gy/brn, wh specs, frm, sb blk, calc, chlky tex, carb mat, pyr, no vis por, no flr, slow pale wh cut.

Top Niobrara @ 4430' MD.

MARLST: lt gy, specs & mot specs, frm, chlky, calc, whispy carb mat, pyr, no vis por, no flr, mod wh cut.

MARLST: lt gy, specs & mot specs, frm, chlky, calc, whispy carb mat, pyr, no vis por, no flr, mod wh cut.





SH: dk gy, blk, blk-pty, mod calc,
carb specs, tr pyr, tr Bent, no flor, occ
slow wh cut.

SH: dk gy, blk, blk-pty, mod calc,
carb specs, tr pyr, tr Bent, no flor, occ
slow wh cut.

Chalky Marlst: lt gy/brn, wh specs,
frm, sb blk, calc, chky tex, carb mat,
pyr, no vis por, no flor, slow pale wh
cut.

SH: gy-dkgy, frm, blk-pty, n-sl calc,
Inoc frag, tr pyr, Bent, carb.

SH: gy-dkgy, frm, blk-pty, n-sl calc,
Inoc frag, tr pyr, Bent, carb.

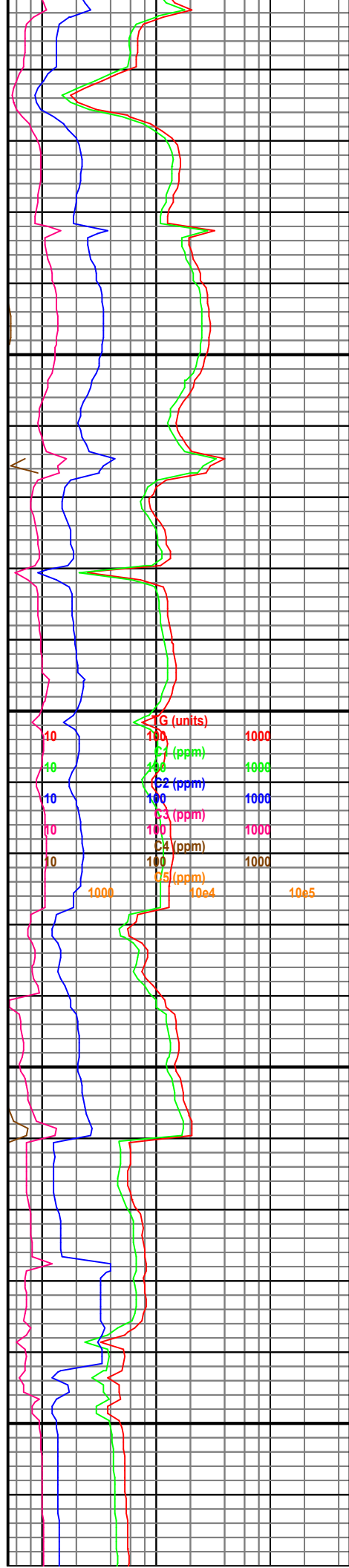
Chalky Marlst: lt gybrn, wh specs, frm,
sb blk, calc, chky tex, carb mat, pyr,
no vis por, no flor, slow wh cut.

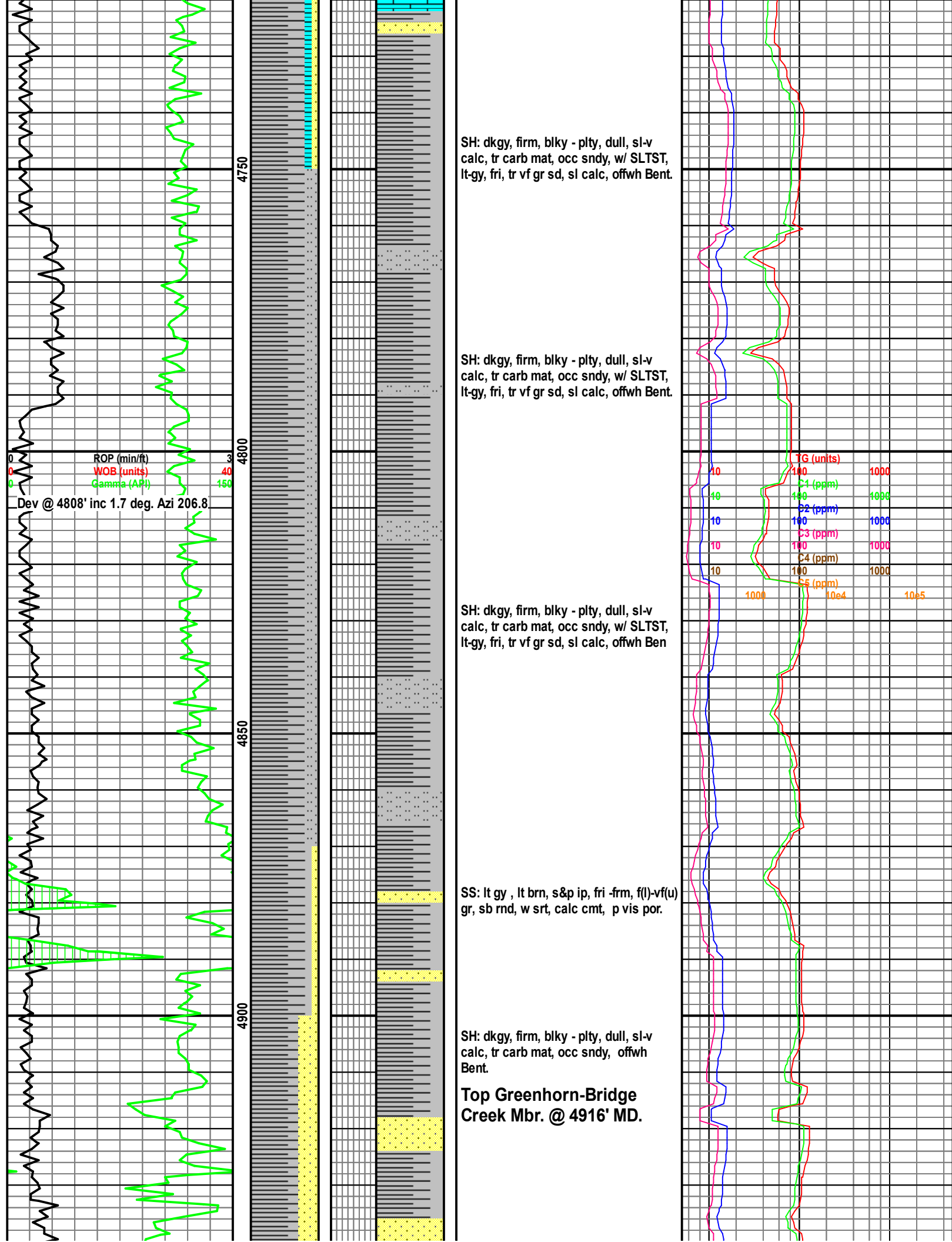
Top Fort Hays @ 4660'MD.

LS: wh, occ lt gy specs, crpxln, inoc
frag, tt.

Top Carlile 4704' MD.

SS: lt gy, wh, S & P ip, fri -frm, f(l) -vf(u)
gr, sbrnd, w srt, calc cmt, p vis por,
even pale yel flor, slow wh cut.





TOOH Circulate &
Conditione Mud

ROP (min/ft)
WOB (units)
Gamma (API)

TD @ 5285' 10/28/2012
11:00 am.

5200

5250

5300

B

B

vis por, tr Bentonite, tr pry, ptchy pale
yel flor,slow strmg yelwh cuts from lt
brn .

Top Dakota D1 @ 5174'MD

SS: wh, lt brn ip, frm, f(l) gr, sbrnd, w
srt, sil cmt, wh clay fill, sl calc, mod
vis por, tr Bentonite, tr pry, ptchy pale
yel flor,slow strmg yelwh cuts from lt
brn .

Top Dakota D2 @ 5192'MD

Top Dakota D3 @ 5207'MD

SS: wh, lt brn ip, frm, f(l) gr, sbrnd, w
srt, sil cmt, wh clay fill, sl calc, mod
vis por, tr Bentonite, tr pry, ptchy pale
yel flor,slow strmg yelwh cuts from lt
brn .

Top Huntsman @ 5228'MD

SH: dkgy, firm, blkly - plty, dull, sl calc,
tr carb mat, tr offwh Bent.

SH: dkgy, firm, blkly - plty, dull, sl calc,
tr carb mat, tr offwh Bent.

IG (units)

C1 (ppm)

C2 (ppm)

C3 (ppm)

C4 (ppm)

C5 (ppm)

10e4

10e5