



Well Name: North Platte 14-36

Surface Location: North Platte 14-36 Pad Sec.36-T5N-R63W
North American Datum 1983 US State Plane 1983 Colorado Northern Zone
Ground Elevation: 4540.0
Northing 1372984.29 Easting 3309304.67 Latitude 40.351930 Longitude -104.390190 Slot
Original Well Elev WELL @ 4555.0ft (Original Well Elev)

+N/-S +E/-W
0.0 0.0

Northing
1372984.29

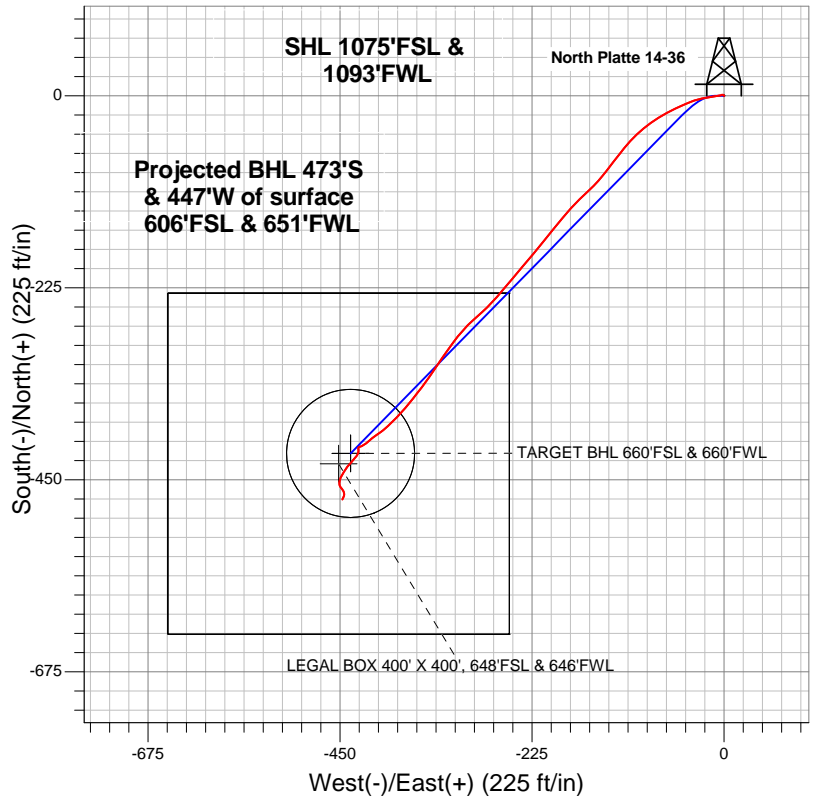
Easting
3309304.67

Latitude
40.351930

Longitude
-104.390190

Slot

BONANZA CREEK ENERGY OPERATING



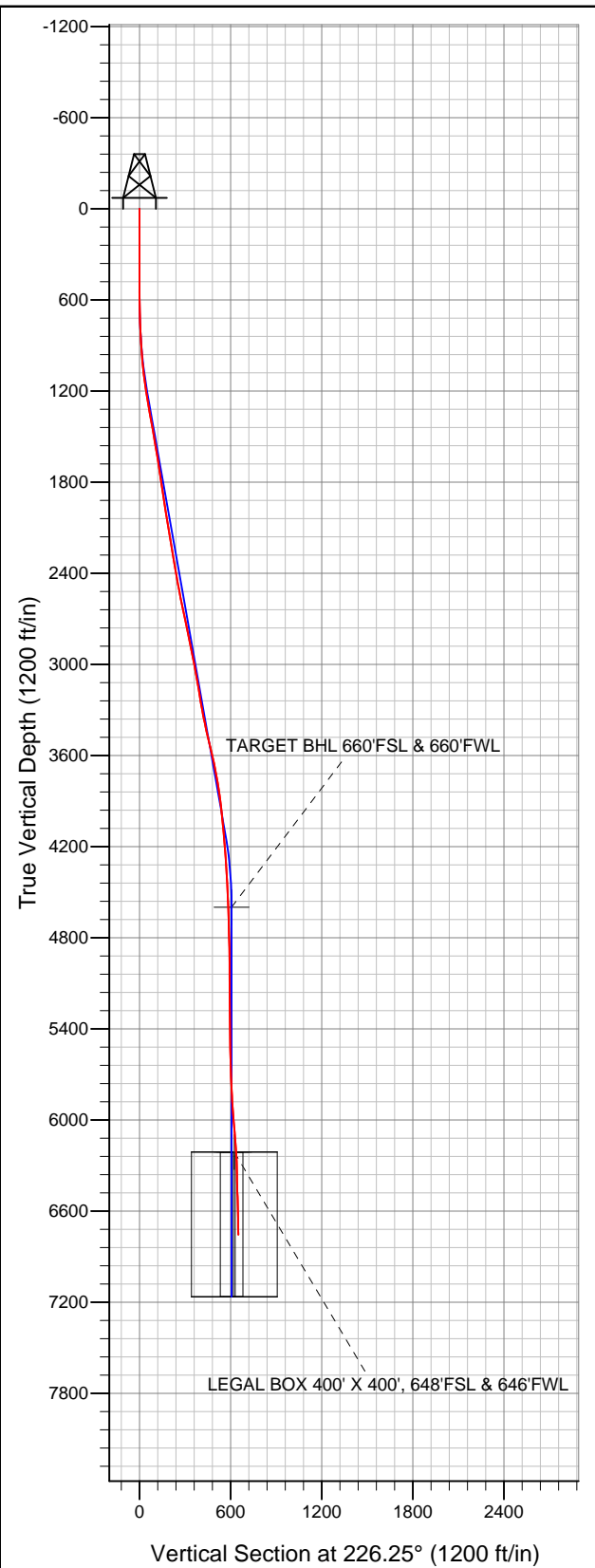
LEGEND

- North Platte 14-36, Wellbore #1, Plan #1 (MAY 23, 2012) V0
- Wellbore #1
- Survey #1

Final Survey Plot

Projected Final Survey -
6808'MD & 6755'TVD @ 651'VS
0.70 deg Inc 194.00 deg AZ

Project: SEC.36-T5N-R63W
Site: North Platte 14-36 Pad Sec.36-T5N-R63W
Well: North Platte 14-36
Plan: Wellbore #1





Directional

BONANZA CREEK ENERGY OPERATING

SEC.36-T5N-R63W

North Platte 14-36 Pad Sec.36-T5N-R63W

North Platte 14-36

Wellbore #1

Survey: Survey #1

Standard Survey Report

16 October, 2012

Survey										
	Measured Depth (ft)	Inclination (°)	Azimuth (°)	Vertical Depth (ft)	+N/-S (ft)	+E/-W (ft)	Vertical Section (ft)	Dogleg Rate (°/100ft)	Build Rate (°/100ft)	Turn Rate (°/100ft)
Main Survey	0.0	0.00	0.00	0.0	0.0	0.0	0.0	0.00	0.00	0.00
	131.0	0.20	53.70	131.0	0.1	0.2	-0.2	0.15	0.15	0.00
	224.0	0.40	309.10	224.0	0.4	0.1	-0.3	0.53	0.22	-112.47
	317.0	0.40	305.10	317.0	0.8	-0.5	-0.2	0.03	0.00	-4.30
	422.0	0.30	311.20	422.0	1.2	-1.0	-0.1	0.10	-0.10	5.81
	531.0	0.10	132.30	531.0	1.3	-1.1	-0.1	0.37	-0.18	-164.13
	625.0	0.80	272.20	625.0	1.3	-1.7	0.3	0.93	0.74	148.83
	719.0	1.80	252.50	719.0	0.9	-3.8	2.1	1.15	1.06	-20.96
	813.0	3.30	262.20	812.9	0.1	-7.9	5.6	1.65	1.60	10.32
	905.0	4.40	259.40	904.7	-0.9	-13.9	10.7	1.21	1.20	-3.04
	999.0	6.10	261.30	998.3	-2.3	-22.4	17.8	1.82	1.81	2.02
	1,091.0	7.60	252.70	1,089.6	-4.9	-33.1	27.3	1.97	1.63	-9.35
1,183.0	8.70	246.70	1,180.7	-9.5	-45.3	39.2	1.51	1.20	-6.52	

Company:	BONANZA CREEK ENERGY OPERATING	Local Co-ordinate Reference:	Well North Platte 14-36
Project:	SEC.36-T5N-R63W	TVD Reference:	WELL @ 4555.0ft (Original Well Elev)
Site:	North Platte 14-36 Pad Sec.36-T5N-R63W	MD Reference:	WELL @ 4555.0ft (Original Well Elev)
Well:	North Platte 14-36	North Reference:	True
Wellbore:	Wellbore #1	Survey Calculation Method:	Minimum Curvature
Design:	Wellbore #1	Database:	Landmark

Survey										
Measured Depth (ft)	Inclination (°)	Azimuth (°)	Vertical Depth (ft)	+N/-S (ft)	+E/-W (ft)	Vertical Section (ft)	Dogleg Rate (°/100ft)	Build Rate (°/100ft)	Turn Rate (°/100ft)	
1,276.0	10.10	243.90	1,272.4	-15.8	-59.1	53.6	1.58	1.51	-3.01	
1,371.0	11.30	239.00	1,365.8	-24.3	-74.5	70.6	1.58	1.26	-5.16	
1,465.0	10.00	233.40	1,458.2	-33.9	-89.0	87.7	1.77	-1.38	-5.96	
1,559.0	9.40	226.70	1,550.8	-44.0	-101.1	103.5	1.36	-0.64	-7.13	
1,652.0	9.10	220.00	1,642.6	-54.9	-111.4	118.4	1.20	-0.32	-7.20	
1,746.0	8.80	220.20	1,735.5	-66.1	-120.8	132.9	0.32	-0.32	0.21	
1,840.0	8.20	217.00	1,828.4	-76.9	-129.4	146.7	0.81	-0.64	-3.40	
1,934.0	8.70	217.50	1,921.4	-87.9	-137.8	160.3	0.54	0.53	0.53	
2,028.0	9.90	221.60	2,014.2	-99.6	-147.5	175.4	1.46	1.28	4.36	
2,121.0	9.30	226.90	2,105.9	-110.7	-158.3	190.9	1.15	-0.65	5.70	
2,215.0	9.00	225.60	2,198.7	-121.0	-169.1	205.8	0.39	-0.32	-1.38	
2,306.0	9.30	222.10	2,288.5	-131.5	-179.1	220.3	0.69	0.33	-3.85	
2,399.0	10.30	219.80	2,380.2	-143.4	-189.5	236.0	1.15	1.08	-2.47	
2,493.0	10.20	218.90	2,472.7	-156.4	-200.1	252.7	0.20	-0.11	-0.96	
2,584.0	11.70	218.60	2,562.0	-169.8	-210.9	269.8	1.65	1.65	-0.33	
2,678.0	12.20	220.00	2,654.0	-184.9	-223.2	289.1	0.61	0.53	1.49	
2,772.0	12.00	220.70	2,745.9	-199.9	-236.0	308.7	0.26	-0.21	0.74	
2,866.0	11.40	219.30	2,837.9	-214.5	-248.2	327.7	0.71	-0.64	-1.49	
2,958.0	11.60	220.90	2,928.1	-228.5	-260.1	345.9	0.41	0.22	1.74	
3,051.0	10.40	222.60	3,019.4	-241.8	-271.9	363.6	1.34	-1.29	1.83	
3,145.0	9.60	229.10	3,111.9	-253.2	-283.5	379.9	1.47	-0.85	6.91	
3,238.0	9.30	227.20	3,203.7	-263.3	-294.9	395.1	0.47	-0.32	-2.04	
3,332.0	10.60	221.00	3,296.3	-275.0	-306.1	411.3	1.79	1.38	-6.60	
3,425.0	12.00	216.70	3,387.5	-289.2	-317.5	429.4	1.76	1.51	-4.62	
3,519.0	13.30	214.70	3,479.2	-306.0	-329.5	449.6	1.46	1.38	-2.13	
3,613.0	14.00	213.80	3,570.5	-324.3	-342.0	471.3	0.78	0.74	-0.96	
3,706.0	11.90	217.20	3,661.2	-341.3	-354.1	491.8	2.40	-2.26	3.66	
3,800.0	10.30	218.80	3,753.4	-355.6	-365.2	509.7	1.73	-1.70	1.70	
3,891.0	8.40	220.90	3,843.2	-366.9	-374.6	524.4	2.12	-2.09	2.31	
3,986.0	6.30	223.50	3,937.4	-376.0	-382.8	536.5	2.24	-2.21	2.74	
4,079.0	5.90	225.40	4,029.9	-383.0	-389.7	546.4	0.48	-0.43	2.04	
4,173.0	5.20	230.20	4,123.4	-389.1	-396.4	555.4	0.89	-0.74	5.11	
4,266.0	4.10	234.20	4,216.1	-393.8	-402.3	562.9	1.23	-1.18	4.30	
4,360.0	3.30	237.10	4,309.9	-397.2	-407.3	568.9	0.87	-0.85	3.09	
4,454.0	3.20	227.70	4,403.8	-400.4	-411.6	574.2	0.58	-0.11	-10.00	
4,547.0	3.30	229.80	4,496.6	-403.9	-415.5	579.5	0.17	0.11	2.26	
4,640.0	2.10	235.50	4,589.5	-406.6	-419.0	583.8	1.32	-1.29	6.13	
4,651.2	2.06	235.44	4,600.7	-406.8	-419.3	584.2	0.32	-0.32	-0.56	
TARGET BHL 660°FSL & 660°FWL										
4,733.0	1.80	234.90	4,682.5	-408.4	-421.6	586.9	0.32	-0.32	-0.66	
4,827.0	1.30	243.00	4,776.4	-409.7	-423.7	589.4	0.58	-0.53	8.62	
4,921.0	0.80	253.00	4,870.4	-410.4	-425.3	591.0	0.56	-0.53	10.64	
5,014.0	0.50	230.70	4,963.4	-410.9	-426.2	592.0	0.42	-0.32	-23.98	
5,109.0	0.30	251.80	5,058.4	-411.2	-426.8	592.7	0.26	-0.21	22.21	
5,202.0	0.60	242.10	5,151.4	-411.5	-427.5	593.3	0.33	0.32	-10.43	
5,296.0	0.40	233.00	5,245.4	-411.9	-428.2	594.1	0.23	-0.21	-9.68	
5,389.0	0.50	209.10	5,338.4	-412.5	-428.6	594.9	0.23	0.11	-25.70	
5,484.0	0.80	172.90	5,433.4	-413.5	-428.7	595.6	0.52	0.32	-38.11	
5,578.0	1.10	165.30	5,527.4	-415.0	-428.4	596.5	0.35	0.32	-8.09	
5,672.0	2.80	193.80	5,621.3	-418.1	-428.7	598.9	2.03	1.81	30.32	
5,765.0	2.60	221.30	5,714.2	-421.9	-430.7	602.9	1.40	-0.22	29.57	
5,859.0	2.20	216.80	5,808.1	-425.0	-433.2	606.8	0.47	-0.43	-4.79	
5,953.0	4.20	221.80	5,902.0	-429.0	-436.5	612.0	2.15	2.13	5.32	
6,047.0	4.50	219.80	5,995.7	-434.4	-441.2	619.1	0.36	0.32	-2.13	

Company:	BONANZA CREEK ENERGY OPERATING	Local Co-ordinate Reference:	Well North Platte 14-36
Project:	SEC.36-T5N-R63W	TVD Reference:	WELL @ 4555.0ft (Original Well Elev)
Site:	North Platte 14-36 Pad Sec.36-T5N-R63W	MD Reference:	WELL @ 4555.0ft (Original Well Elev)
Well:	North Platte 14-36	North Reference:	True
Wellbore:	Wellbore #1	Survey Calculation Method:	Minimum Curvature
Design:	Wellbore #1	Database:	Landmark

Survey										
Measured Depth (ft)	Inclination (°)	Azimuth (°)	Vertical Depth (ft)	+N/-S (ft)	+E/-W (ft)	Vertical Section (ft)	Dogleg Rate (°/100ft)	Build Rate (°/100ft)	Turn Rate (°/100ft)	
6,140.0	4.80	210.20	6,088.4	-440.6	-445.5	626.4	0.90	0.32	-10.32	
6,232.0	4.70	205.90	6,180.1	-447.3	-449.1	633.7	0.40	-0.11	-4.67	
6,261.6	4.39	198.92	6,209.6	-449.4	-450.0	635.8	2.14	-1.04	-23.61	
TARGET CIRCLE 660'FSL & 660'FWL										
6,262.7	4.38	198.64	6,210.7	-449.5	-450.0	635.9	2.14	-0.91	-25.24	
LEGAL BOX 400' X 400', 648'FSL & 646'FWL										
6,326.0	4.00	180.80	6,273.8	-454.0	-450.8	639.6	2.14	-0.61	-28.17	
6,420.0	4.60	136.10	6,367.6	-460.0	-448.2	641.9	3.53	0.64	-47.55	
6,514.0	3.10	172.90	6,461.4	-465.2	-445.3	643.4	2.99	-1.60	39.15	
6,606.0	1.80	201.70	6,553.3	-469.1	-445.5	646.2	1.90	-1.41	31.30	
6,700.0	1.20	208.40	6,647.3	-471.3	-446.5	648.5	0.66	-0.64	7.13	
6,762.0	0.70	194.00	6,709.3	-472.2	-446.9	649.4	0.89	-0.81	-23.23	
6,808.0	0.70	194.00	6,755.3	-472.8	-447.1	649.9	0.00	0.00	0.00	

Wellbore Targets									
Target Name									
- hit/miss target	Dip Angle	Dip Dir.	TVD	+N/-S	+E/-W	Northing	Easting		
- Shape	(°)	(°)	(ft)	(ft)	(ft)	(ft)	(ft)	Latitude	Longitude
TARGET BHL 660'FS	0.00	0.00	4,600.0	-418.9	-437.6	1,372,559.93	3,308,872.37	40.350780	-104.391760
- survey misses target center by 21.9ft at 4651.2ft MD (4600.7 TVD, -406.8 N, -419.3 E)									
- Point									
TARGET CIRCLE 660'FS	0.00	0.00	6,212.0	-418.9	-437.6	1,372,559.93	3,308,872.37	40.350780	-104.391760
- survey misses target center by 33.0ft at 6261.4ft MD (6209.4 TVD, -449.4 N, -450.0 E)									
- Circle (radius 75.0)									
LEGAL BOX 400' X 400'	0.00	0.00	6,212.0	-430.9	-451.6	1,372,547.80	3,308,858.52	40.350747	-104.391810
- survey misses target center by 18.7ft at 6262.7ft MD (6210.7 TVD, -449.5 N, -450.0 E)									
- Rectangle (sides W400.0 H400.0 D953.0)									

Checked By: _____	Approved By: _____	Date: _____
-------------------	--------------------	-------------