

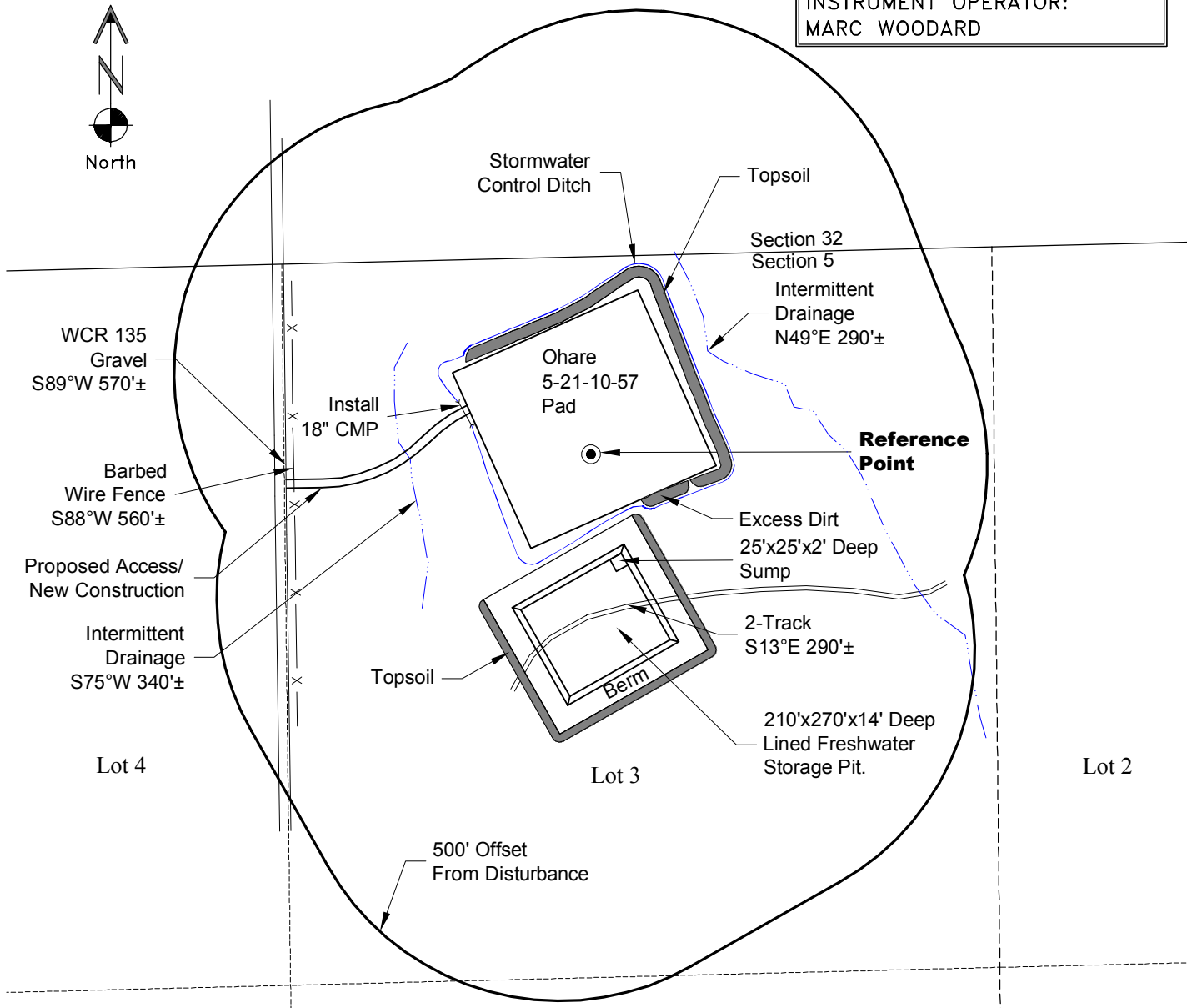
# LOCATION DRAWING

**VEGETATION:**  
DISTURBED GRASSLAND

**SURFACE USE:**  
GRAZING

## REFERENCE POINT

LATITUDE: 40.87445  
LONGITUDE: -103.77844  
FOOTAGE: 370 FNL 1907 FWL  
GROUND ELEVATION: 4920.7  
PDOP: 2.5 DATE: 10/7/2011  
INSTRUMENT OPERATOR:  
MARC WOODARD



### NOTE-DISTANCE TO NEAREST:

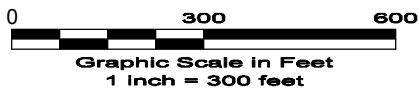
Property Line - N 1°W 370'  
Public Road - WCR 135 - S 89°W 570'±  
Building - House N40°W 1.1 Miles  
Railroad - S 42 Miles  
Powerline - W 1875'±

**DISTURBANCE ACREAGE:**  
4.4± DRILLING OPERATIONS  
2.3± FRESHWATER STORAGE PIT  
1.0± INTERIM RECLAIM

### NOTE:

ALL PRODUCTION FACILITIES WILL BE ON PAD.

12/3/12



LAND SURVEYING AND MAPPING  
LAFAYETTE - WINTER PARK  
Ph 303 666 0379 Fx 303 665 6320

**CARRIZO NIOBRARA LLC**  
**OHARE 5-21-10-57 PAD**

**LOT 3 SECTION 5 T10N R57W**  
**6th PM WELD COUNTY COLORADO**