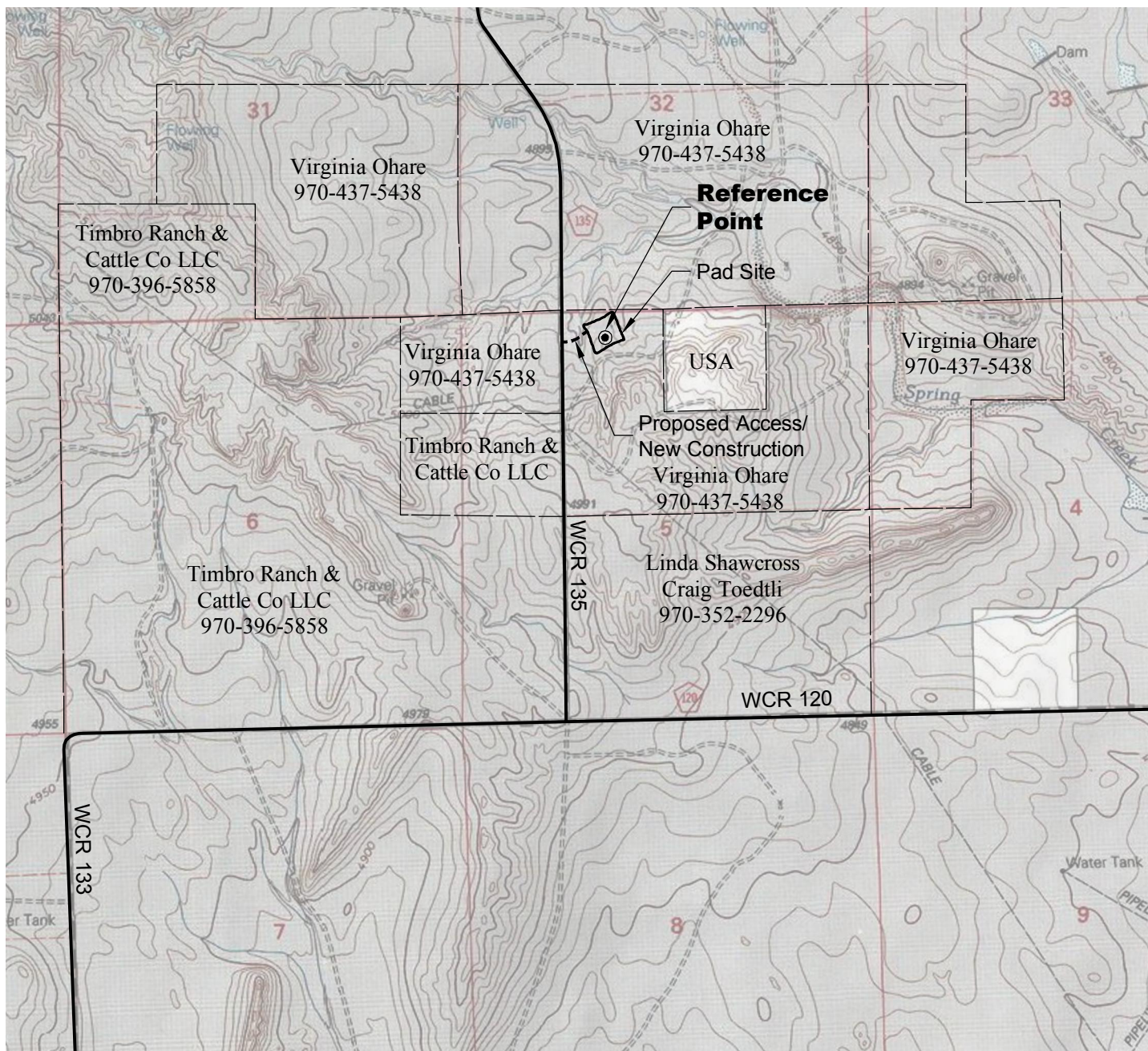


ACCESS ROAD MAP



DRIVING DIRECTIONS:

- MP 0.0 - Intersection of Highway 14 & WCR 129 in Raymer;
East on Highway 14
- MP 8.6 - Left on Highway 71 (WCR 147); continue north on Highway 71
- MP 26.3 - Left on WCR 120
- MP 31.0 - Right on WCR 135
- MP 31.9 - Right on Access to pad
- MP 32.0 - Ohare 5-21-10-57 Pad

12/3/12



North

0 2000 4000

Graphic Scale in Feet
1 inch = 2000 feet



LAND SURVEYING AND MAPPING
LAFAYETTE - WINTER PARK
Ph 303 666 0379 Fx 303 665 6320

CARRIZO NIOBRARA LLC
OHARE 5-21-10-57 PAD

LOT 3 SECTION 5 T10N R57W
6th PM WELD COUNTY COLORADO