

---

**WPX ENERGY ROCKY MOUNTAIN LLC-EBUS**

---

**KP 444-18  
KOKOPELLI  
Garfield County , Colorado**

**Cement Surface Casing**  
**07-Jul-2012**

**Post Job Summary**

## The Road to Excellence Starts with Safety

Sold To #: 300721	Ship To #: 2935427	Quote #:	Sales Order #: 9619371
Customer: WPX ENERGY ROCKY MOUNTAIN LLC-EBUS	Customer Rep: Hutson, Matt		
Well Name: KP	Well #: 444-18	API/UWI #: 05-045-20634	
Field: KOKOPELLI	City (SAP): SILT	County/Parish: Garfield	State: Colorado
Lat: N 39.522 deg. OR N 39 deg. 31 min. 19.909 secs.	Long: W 107.595 deg. OR W -108 deg. 24 min. 19.246 secs.		
Contractor: NABORS 574	Rig/Platform Name/Num: NABORS 574		
Job Purpose: Cement Surface Casing			
Well Type: Development Well	Job Type: Cement Surface Casing		
Sales Person: MAYO, MARK	Srvc Supervisor: KUKUS, CHRISTOPHER	MBU ID Emp #: 413952	

## Job Personnel

HES Emp Name	Exp Hrs	Emp #	HES Emp Name	Exp Hrs	Emp #	HES Emp Name	Exp Hrs	Emp #
KEANE, JOHN Donovon	0.0	486519	KUKUS, CHRISTOPHER A	0.0	413952	KUKUS, CRAIG A	0.0	369124
RAMSEY, STANTON Michael	0.0	477609						

## Equipment

HES Unit #	Distance-1 way	HES Unit #	Distance-1 way	HES Unit #	Distance-1 way	HES Unit #	Distance-1 way
10565341	60 mile	10871245	60 mile	10973571	60 mile	11259886	60 mile
11808831	60 mile						

## Job Hours

Date	On Location Hours	Operating Hours	Date	On Location Hours	Operating Hours	Date	On Location Hours	Operating Hours

TOTAL	Total is the sum of each column separately							
-------	--	--	--	--	--	--	--	--

## Job

Formation Name	Top	Bottom	Called Out	Date	Time	Time Zone
Formation Depth (MD)			On Location	07 - Jul - 2012	08:10	MST
Form Type	BHST		Job Started	07 - Jul - 2012	12:00	MST
Job depth MD	1110. ft	Job Depth TVD	Job Started	07 - Jul - 2012	13:27	MST
Water Depth		Wk Ht Above Floor	Job Completed	07 - Jul - 2012	14:20	MST
Perforation Depth (MD)	From	To	Departed Loc	07 - Jul - 2012	16:30	MST

## Well Data

Description	New / Used	Max pressure psig	Size in	ID in	Weight lbm/ft	Thread	Grade	Top MD ft	Bottom MD ft	Top TVD ft	Bottom TVD ft
-------------	------------	-------------------	---------	-------	---------------	--------	-------	-----------	--------------	------------	---------------

Sales/Rental/3<sup>rd</sup> Party (HES)

Description	Qty	Qty uom	Depth	Supplier
R/A DENSOMETER W/CHART RECORDER,/JOB,ZI	1	JOB		
PORT. DATA ACQUIS. W/OPTICEM RT W/HES	1	EA		
ADC (AUTO DENSITY CTRL) SYS, /JOB,ZI	1	JOB		
PLUG,CMTG,TOP,9 5/8,HWE,8.16 MIN/9.06 MA	1	EA		

## Tools and Accessories

Type	Size	Qty	Make	Depth	Type	Size	Qty	Make	Depth	Type	Size	Qty	Make
Guide Shoe					Packer					Top Plug			
Float Shoe					Bridge Plug					Bottom Plug			
Float Collar					Retainer					SSR plug set			
Insert Float										Plug Container			
Stage Tool										Centralizers			

## Miscellaneous Materials

Gelling Agt	Conc	Surfactant	Conc	Acid Type	Qty	Conc	%
Treatment Fld	Conc	Inhibitor	Conc	Sand Type	Size	Qty	

## Fluid Data

Stage/Plug #: 1									
Fluid #	Stage Type	Fluid Name	Qty	Qty uom	Mixing Density lbm/gal	Yield ft <sup>3</sup> /sk	Mix Fluid Gal/sk	Rate bbl/min	Total Mix Fluid Gal/sk
1	Fresh Water		20.00	bbl	8.33	.0	.0	.0	
2	VersaCem Lead	VERSACEM (TM) SYSTEM (452010)	160.0	sacks	12.3	2.38	13.75		13.75
	0.25 lbm	POLY-E-FLAKE (101216940)							
	0.25 %	D-AIR 5000, 50 LB SACK (102068797)							
	13.75 Gal	FRESH WATER							
3	VersaCem Tail	VERSACEM (TM) SYSTEM (452010)	160.0	sacks	12.8	2.11	11.75		11.75
	11.75 Gal	FRESH WATER							
4	Displacement Fluid		84.00	bbl	8.34	.0	.0	.0	
Calculated Values		Pressures		Volumes					
Displacement		Shut In: Instant		Lost Returns		Cement Slurry		Pad	
Top Of Cement		5 Min		Cement Returns		Actual Displacement		Treatment	
Frac Gradient		15 Min		Spacers		Load and Breakdown		Total Job	
Rates									
Circulating		Mixing		Displacement		Avg. Job			
Cement Left In Pipe	Amount	0 ft	Reason	Shoe Joint					
Frac Ring # 1 @	ID	Frac ring # 2 @	ID	Frac Ring # 3 @	ID	Frac Ring # 4 @	ID		
The Information Stated Herein Is Correct				Customer Representative Signature					

*The Road to Excellence Starts with Safety*

<b>Sold To #:</b> 300721		<b>Ship To #:</b> 2935427		<b>Quote #:</b>		<b>Sales Order #:</b> 9619371	
<b>Customer:</b> WPX ENERGY ROCKY MOUNTAIN LLC-EBUS				<b>Customer Rep:</b> Hutson, Matt			
<b>Well Name:</b> KP			<b>Well #:</b> 444-18			<b>API/UWI #:</b> 05-045-20634	
<b>Field:</b> KOKOPELLI		<b>City (SAP):</b> SILT		<b>County/Parish:</b> Garfield			<b>State:</b> Colorado
<b>Legal Description:</b>							
<b>Lat:</b> N 39.522 deg. OR N 39 deg. 31 min. 19.909 secs.				<b>Long:</b> W 107.595 deg. OR W -108 deg. 24 min. 19.246 secs.			
<b>Contractor:</b> NABORS 574			<b>Rig/Platform Name/Num:</b> NABORS 574				
<b>Job Purpose:</b> Cement Surface Casing						<b>Ticket Amount:</b>	
<b>Well Type:</b> Development Well			<b>Job Type:</b> Cement Surface Casing				
<b>Sales Person:</b> MAYO, MARK			<b>Srv Supervisor:</b> KUKUS, CHRISTOPHER			<b>MBU ID Emp #:</b> 413952	

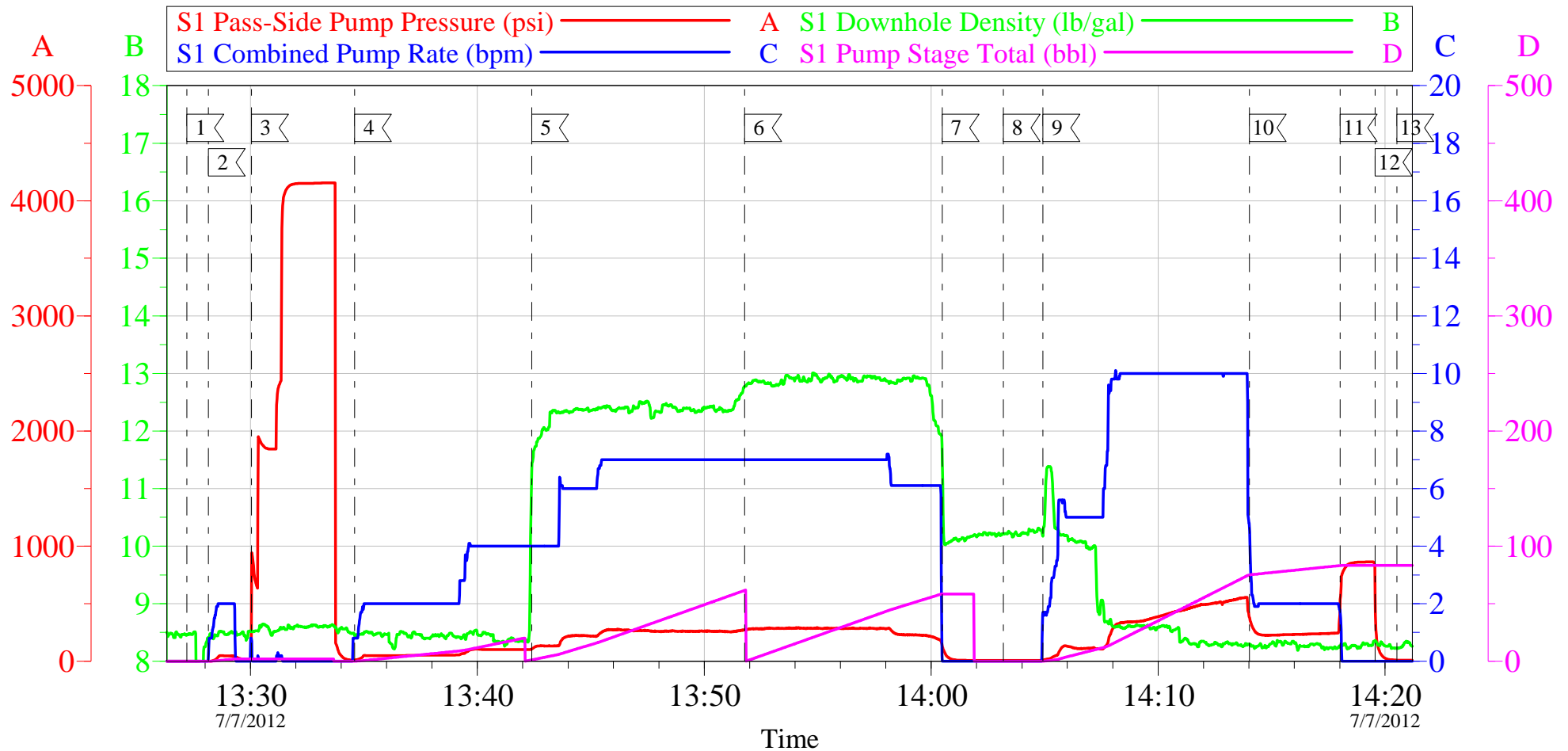
Activity Description	Date/Time	Cht #	Rate bbl/min	Volume bbl		Pressure psig		Comments
				Stage	Total	Tubing	Casing	
Call Out	07/07/2012 08:10							ELITE # 8
Depart Yard Safety Meeting	07/07/2012 10:00							ALL HES EMPLOYEES
Arrive At Loc	07/07/2012 12:00							RIG ON BOTTOM AND CIRCULATING
Assessment Of Location Safety Meeting	07/07/2012 12:05							ALL HES EMPLOYEES
Pre-Rig Up Safety Meeting	07/07/2012 12:10							ALL HES EMPLOYEES
Rig-Up Equipment	07/07/2012 12:15							1 F-550 PICKUP 1 HT-400 PUMP TRUCK 1 660 BULK TRUCK
Pre-Job Safety Meeting	07/07/2012 13:15							ALL HES EMPLOYEES AND RIG CREW
Start Job	07/07/2012 13:27							TD: 1115 TP: 1100 SJ: 29 CSG: 9 5/8 32.3# OH: 13.5 MUD WT 10.1
Test Lines	07/07/2012 13:30					4150.0		PRESSURE TEST OK
Pump Spacer	07/07/2012 13:34		4	20	20		100.0	FRESH WATER SPACER
Pump Lead Cement	07/07/2012 13:42		7	67.8	67.8		245.0	160 SKS 12.3 PPG 2.38 YEILD 13.75 GAL / SK LEAD CEMENT WEIGHT VERIFIED VIA MUD SCALES THROUGH OUT LEAD CEMENT
Pump Tail Cement	07/07/2012 13:51		7	60.1	60.1		260.0	160 SKS 12.8 PPG 2.11 YEILD 11.75 GAL / SK TAIL CEMENT WEIGHT VERIFIED VIA MUD SCALES THROUGH OUT TAIL CEMENT

## Cementing Job Log

Activity Description	Date/Time	Cht #	Rate bbl/min	Volume bbl		Pressure psig		Comments
				Stage	Total	Tubing	Casing	
Shutdown	07/07/2012 14:00							
Drop Plug	07/07/2012 14:03							PLUG AWAY NO PROBLEMS
Pump Displacement	07/07/2012 14:04		10	84.3	84.3		510.0	FRESH WATER
Slow Rate	07/07/2012 14:14		2	74.3	74.3		230.0	SLOW RATE TO BUMP PLUG
Bump Plug	07/07/2012 14:18		2	84.3	84.3		245.0	BUMP PLUG @ 245 AND TOOK PRESSURE UP TO 858 PSI
Check Floats	07/07/2012 14:19							FLOATS HELD .5 BBL BACK TO DISPLACEMENT TANKS
End Job	07/07/2012 14:20							GOOD CIRCULATION THROUGH OUT JOB 25 BBL OF CEMENT BACK SURFACE
Pre-Rig Down Safety Meeting	07/07/2012 14:30							
Rig-Down Equipment	07/07/2012 14:40							
Pre-Convoy Safety Meeting	07/07/2012 16:00							
Crew Leave Location	07/07/2012 16:30							THANKS FOR USING HALLIBURTON CEMENT CHRIS KUKUS AND CREW

# WPX - KP 444-18

9 5/8 SURFACE



## Local Event Log

1 START JOB	13:27:12	2 FILL LINES	13:28:09	3 PRESSURE TEST	13:30:03
4 PUMP H2O SPACER	13:34:36	5 PUMP LEAD CEMENT	13:42:23	6 PUMP TAIL CEMENT	13:51:47
7 SHUT DOWN	14:00:29	8 DROP PLUG	14:03:10	9 PUMP H2O DISPLACEMENT	14:04:55
10 SLOW RATE	14:14:01	11 BUMP PLUG	14:18:01	12 CHECK FLOATS	14:19:34
13 END JOB	14:20:31				

Customer: WPX  
Well Description: KP 444-18  
Company Rep: MATT HUTSON

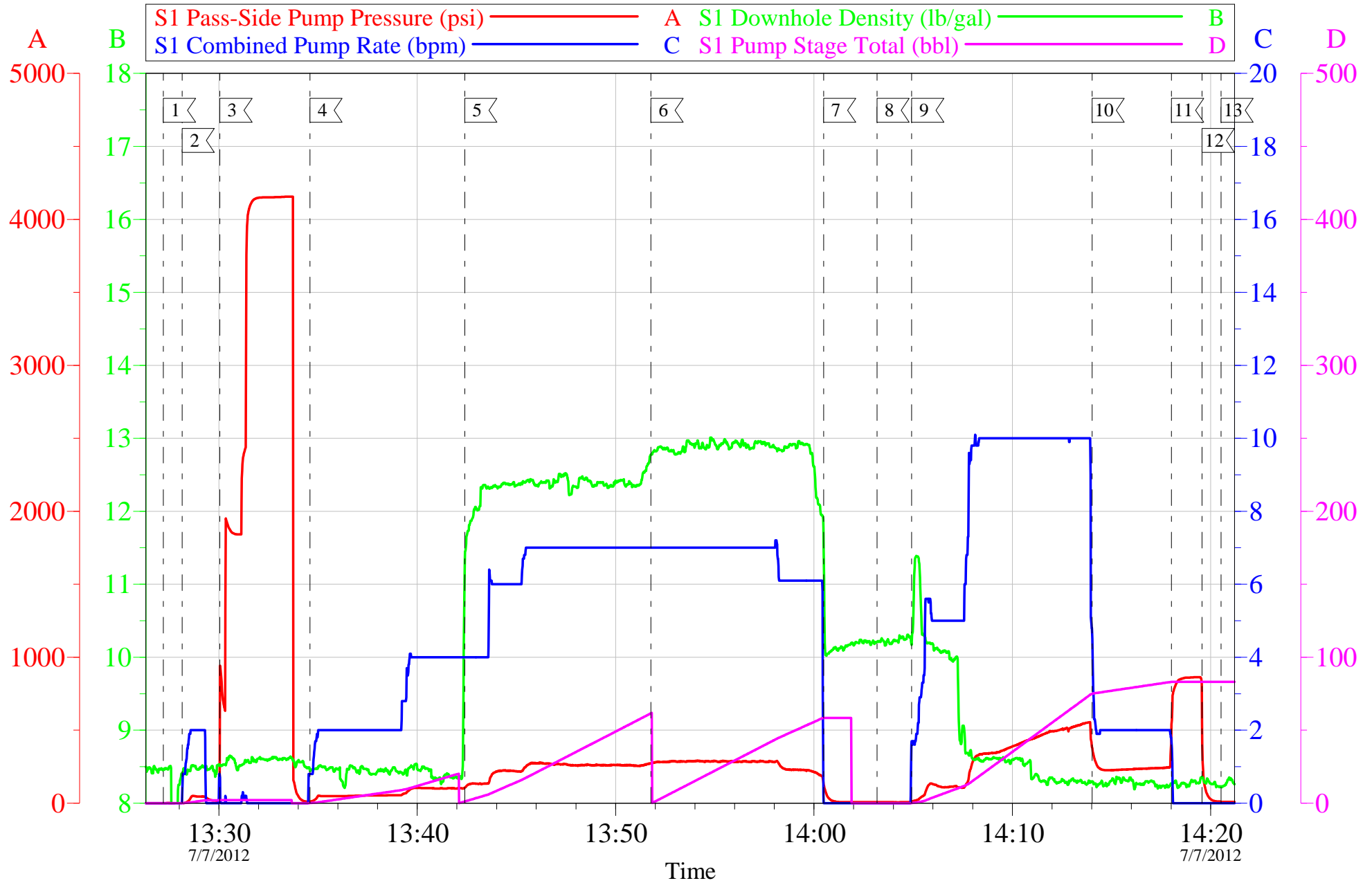
Job Date: 07-Jul-2012  
Job Type: SURFACE  
Cement Supervisor: CHRIS KUKUS

Sales Order #: 9619371  
ADC Used: YES  
Elite # 8: JOHN KEANE

OptiCem v6.4.10  
07-Jul-12 14:32

# WPX - KP 444-18

9 5/8 SURFACE



Customer: WPX  
Well Description: KP 444-18  
Company Rep: MATT HUTSON

Job Date: 07-Jul-2012  
Job Type: SURFACE  
Cement Supervisor: CHRIS KUKUS

Sales Order #: 9619371  
ADC Used: YES  
Elite # 8: JOHN KEANE

OptiCem v6.4.10  
07-Jul-12 14:32

# HALLIBURTON

## Water Analysis Report

Company: WPX

Submitted by: CHRIS KUKUS

Attention: J. TROUT/C.MARTINEZ

Lease KP

Well # 444-18

Date: 7/7/2012

Date Rec.: 7/7/2012

S.O.# 9619371

Job Type: SURFACE

Specific Gravity	<i>MAX</i>	<b>1</b>
pH	<i>8</i>	<b>6.8</b>
Potassium (K)	<i>5000</i>	<b>0</b> Mg / L
Calcium (Ca)	<i>500</i>	<b>120</b> Mg / L
Iron (FE2)	<i>300</i>	<b>0</b> Mg / L
Chlorides (Cl)	<i>3000</i>	<b>0</b> Mg / L
Sulfates (SO <sub>4</sub> )	<i>1500</i>	<b>UNDER 200</b> Mg / L
Chlorine (Cl <sub>2</sub> )		<b>0</b> Mg / L
Temp	<i>40-80</i>	<b>50</b> Deg
Total Dissolved Solids		<b>130</b> Mg / L

Respectfully: CHRIS KUKUS

Title: CEMENTING SUPERVISOR

Location: Grand Junction, CO

NOTICE:

This report is limited to the described sample tested. Any person using or relying on this report agrees that Halliburton shall not be liable for any loss or damage whether due to act or omission resulting from such report or its



<b>Sales Order #:</b> 9619371	<b>Line Item:</b> 10	<b>Survey Conducted Date:</b> 7/7/2012
<b>Customer:</b> WPX ENERGY ROCKY MOUNTAIN LLC-EBUS		<b>Job Type (BOM):</b> CMT SURFACE CASING BOM
<b>Customer Representative:</b> MATT HUTSON		<b>API / UWI: (leave blank if unknown)</b> 05-045-20634
<b>Well Name:</b> KP		<b>Well Number:</b> 444-18
<b>Well Type:</b> Development Well	<b>Well Country:</b> United States of America	
<b>H2S Present:</b> No	<b>Well State:</b> Colorado	<b>Well County:</b> Garfield

Dear Customer,

We hope that you were satisfied with the service quality of this job performed by Halliburton. It is the aim of our management and service personnel to deliver equipment and service of a standard unmatched in the service sector of the energy industry.

Please take the time to let us know if our performance met with your satisfaction. Please be as critical as possible to ensure we constantly improve our service. Your comments are of great value to us and are intended for the exclusive use of Halliburton.

### CUSTOMER SATISFACTION SURVEY

CATEGORY	CUSTOMER SATISFACTION RESPONSE	
Survey Conducted Date	The date the survey was conducted	7/7/2012
Survey Interviewer	The survey interviewer is the person who initiated the survey.	CHRISTOPHER KUKUS (HX35027)
Customer Participation	Did the customer participate in this survey? (Y/N)	Yes
Customer Representative	Enter the Customer representative name	MATT HUTSON
HSE	Was our HSE performance satisfactory? Circle Y or N	Yes
Equipment	Were you satisfied with our Equipment? Circle Y or N	Yes
Personnel	Were you satisfied with our people? Circle Y or N	Yes
Customer Comment	Customer's Comment	

CUSTOMER SIGNATURE

<b>Sales Order #:</b> 9619371	<b>Line Item:</b> 10	<b>Survey Conducted Date:</b> 7/7/2012
<b>Customer:</b> WPX ENERGY ROCKY MOUNTAIN LLC-EBUS		<b>Job Type (BOM):</b> CMT SURFACE CASING BOM
<b>Customer Representative:</b> MATT HUTSON		<b>API / UWI: (leave blank if unknown)</b> 05-045-20634
<b>Well Name:</b> KP		<b>Well Number:</b> 444-18
<b>Well Type:</b> Development Well	<b>Well Country:</b> United States of America	
<b>H2S Present:</b> No	<b>Well State:</b> Colorado	<b>Well County:</b> Garfield

### KEY PERFORMANCE INDICATORS

General	
<b>Survey Conducted Date</b> The date the survey was conducted	7/7/2012

Cementing KPI Survey	
<b>Type of Job</b> Select the type of job. (Cementing or Non-Cementing)	0
<b>Select the Maximum Deviation range for this Job</b> What is the highest deviation for the job you just completed? This may not be the maximum well deviation.	Vertical
<b>Total Operating Time (hours)</b> Total Operating Hours Including Rig-up, Pumping, Rig-down. Enter in decimal format.	3.5
<b>HSE Incident, Accident, Injury</b> HSE Incident, Accident, Injury. This should be recordable incidents only.	No
<b>Was the job purpose achieved?</b> Was the job delivered correctly as per customer agreed design?	Yes
<b>Operating Hours (Pumping Hours)</b> Total number of hours pumping fluid on this job. Enter in decimal format.	1
<b>Customer Non-Productive Rig Time (hrs)</b> Lost time due to Halliburton in the start, execution, or completion of an ordered service or product, or delays in a follow-on service. Enter in decimal format. 0 if none.	0
<b>Type of Rig Classification Job Was Performed</b> Type Of Rig (classification) Job Was Performed On	Drilling Rig (Portable)
<b>Number Of JSAs Performed</b> Number Of Jsas Performed	6
<b>Number of Unplanned Shutdowns</b> Unplanned shutdown is when injection stops for any period of time.	0
<b>Was this a Primary Cement Job (Yes / No)</b>	Yes

<b>Sales Order #:</b> 9619371	<b>Line Item:</b> 10	<b>Survey Conducted Date:</b> 7/7/2012
<b>Customer:</b> WPX ENERGY ROCKY MOUNTAIN LLC-EBUS		<b>Job Type (BOM):</b> CMT SURFACE CASING BOM
<b>Customer Representative:</b> MATT HUTSON		<b>API / UWI: (leave blank if unknown)</b> 05-045-20634
<b>Well Name:</b> KP		<b>Well Number:</b> 444-18
<b>Well Type:</b> Development Well	<b>Well Country:</b> United States of America	
<b>H2S Present:</b> No	<b>Well State:</b> Colorado	<b>Well County:</b> Garfield

Primary Cement Job= Casing job, Liner job, or Tie-back job.	
<b>Did We Run Wiper Plugs?</b> Did We Run Top And Bottom Casing Wiper Plugs?	Top
<b>Mixing Density of Job Stayed in Designed Density Range (0-100%)</b> Density Range defined as +/- .20 ppg. Calculation: Total BBLs cement mixed at designed density divided by total BBLs of cement multiplied by 100	90
<b>Was Automated Density Control Used?</b> Was Automated Density Control (ADC) Used ?	Yes
<b>Pump Rate (percent) of Job Stayed At Designed Pump Rate</b> Pump Rate range defined as +/- 1bbl/min. Calculation: Total BBLs of fluid pumped at the designed rate divided by Total BBLs of fluid pumped, multiplied by 100	90
<b>Nbr of Remedial Sqz Jobs Rqd - Competition</b> Number Of Remedial Squeeze Jobs Required After Primary Job Performed By Competition	0
<b>Nbr of Remedial Plug Jobs Rqd - HES</b> Number Of Remedial Plug Jobs Needed After Primary Plug Pumped By HES	0
<b>Nbr of Remedial Sqz Jobs Rqd - HES</b> Number Of Remedial Squeeze Jobs Required After Primary Job Performed By HES	0