

ENCANA OIL & GAS (USA) INC. - EBUS

Melbon Ranch 3B-17H

Ensign-135

## Post Job Summary

### Cement Surface Casing

Date Prepared: 03/19/2012  
Version: 1

Service Supervisor: NIELSON, BRANDON

Submitted by: PLIENESS, RYAN

HALLIBURTON

## Wellbore Geometry

Job Tubulars					MD		TVD		Excess	Shoe Joint Length
Type	Description	Size in	ID in	Wt lbm/ft	Top ft	Bottom ft	Top ft	Bottom ft	%	ft
Open Hole Section	Open Hole		12.250		0.00	950.00	0.00	0.00	0.00	0.00
Casing	9 5/8" Surface Casing	9.63	8.835	40.00	0.00	931.00	0.00	0.00	60.00	45.00

# HALLIBURTON

## ***Pumping Schedule***

Stage /Plug #	Fluid #	Fluid Type	Fluid Name	Surface Density lbm/gal	Avg Rate bbl/min	Surface Volume	Downhole Volume
1	1	Spacer	Fresh Water	8.34	0.00	30.0 bbl	30.0 bbl
1	2	Cement Slurry	SwiftCem 14.2#	14.20		265.0 sacks	265.0 sacks

## ***Fluids Pumped***

**Stage/Plug # 1      Fluid 1:**      Fresh Water  
DUMMY MUD / FLUSH / SPACER SBC MATERIAL

Fluid Density: 8.34 lbm/gal  
Fluid Volume: 30.00 bbl  
Pump Rate: 0.00 bbl/min

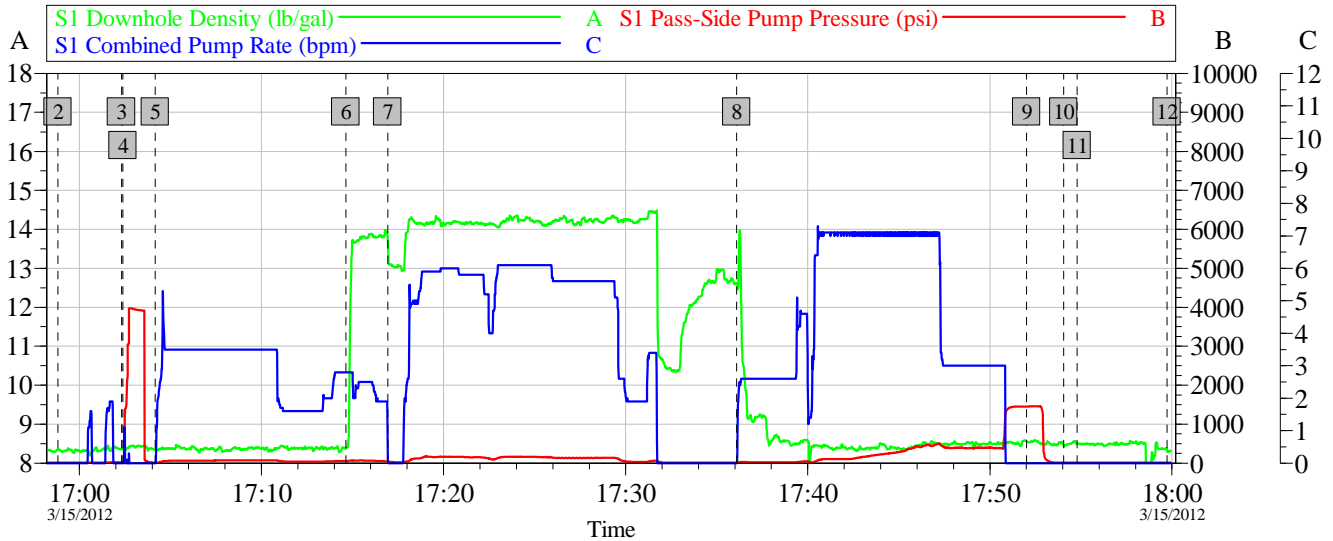
**Stage/Plug # 1      Fluid 2:**      SwiftCem 14.2#  
SWIFTCM (TM) SYSTEM

Fluid Weight: 14.20 lbm/gal  
Slurry Yield: 1.49 ft<sup>3</sup>/sack  
Total Mixing Fluid: 7.43 Gal  
Surface Volume: 265.0 sacks  
Sacks: 265.0 sacks  
Estimated Top of Fluid:

# HALLIBURTON

## Data Acquisition

### ENCANA MELBON RANCH 3B-17H 9.625 SURFACE



Global Event Log			
	Intersection	SPPP	
1	Starting Job	16:25:45 11.00	2 Start Job
3	Start Job	17:02:19 21.00	4 Test Lines
5	Fesh Water Spacer	17:04:10 15.00	6 14.2 # Swiftcem
7	Shut Down Do To Poor Delivery	17:16:56 44.00	8 Pump Displacement
9	Bump Plug	17:52:01 1453	10 Check Floats
11	End Job	17:54:48 12.00	12 Ending Job
			16:58:50 10.000
			17:02:24 21.00
			17:14:38 59.00
			17:36:06 10.000
			17:54:03 12.00
			17:59:44 11.00

Customer: ENCANA	Job Date: 15-Mar-2012	Sales Order #: 9363135
Well Description: SURFACE	UWI: 05-123-35228-00	ENSING 135
SERVICE SUPERVISOR BRANDON NIELSON	OPERATOR MATT BULINSKI	PUMP 11341988

OptiCem v6.4.10  
15-Mar-12 18:03

# HALLIBURTON

## **Service Supervisor Reports**

### **Job Log**

Date/Time	Chart #	Activity Code	Pump Rate	Cum Vol	Pump		Pressure (psig)	Comments
03/15/2012 17:02		Test Lines						PRESSURE TEST TO 3500 PSI NO VISIBLE LEAKS
03/15/2012 17:04		Pump Spacer 1	3.5	30			60.0	FRESH WATER
03/15/2012 17:14		Pump Cement	7	70			149.0	265 SKS SWIFTCEM MIXED @ 14.2 PPG WITH FRESH WATER
03/15/2012 17:30		Drop Top Plug						PLUG PRE LOADED WITNESSED BY COMPANY REP
03/15/2012 17:32		Shutdown						
03/15/2012 17:36		Pump Displacement	7	66.3			268.0	FRESH WATER
03/15/2012 17:52		Bump Plug	3				485.0	CALCULATED PRESSURE TO LAND
03/15/2012 17:54		Check Floats					1400.0	FLOATS HELD
03/15/2012 17:54		End Job						

# HALLIBURTON

## The Road to Excellence Starts with Safety

<b>Sold To #:</b> 340078		<b>Ship To #:</b> 2915442		<b>Quote #:</b>		<b>Sales Order #:</b> 9363135	
<b>Customer:</b> ENCANA OIL & GAS (USA) INC. - EBUS				<b>Customer Rep:</b> .., BILL			
<b>Well Name:</b> Melbon Ranch			<b>Well #:</b> 3B-17H			<b>API/UWI #:</b> 05-123-35228	
<b>Field:</b>		<b>City (SAP):</b> HUDSON		<b>County/Parish:</b> Weld		<b>State:</b> Colorado	
<b>Lat:</b> N 40.135 deg. OR N 40 deg. 8 min. 5.928 secs.				<b>Long:</b> W 104.697 deg. OR W -105 deg. 18 min. 12.132 secs.			
<b>Contractor:</b> Ensign			<b>Rig/Platform Name/Num:</b> 135				
<b>Job Purpose:</b> Cement Surface Casing							
<b>Well Type:</b> Development Well			<b>Job Type:</b> Cement Surface Casing				
<b>Sales Person:</b> FLING, MATTHEW			<b>Srvc Supervisor:</b> NIELSON, BRANDON			<b>MBU ID Emp #:</b> 479703	

### Job Personnel

HES Emp Name	Exp Hrs	Emp #	HES Emp Name	Exp Hrs	Emp #	HES Emp Name	Exp Hrs	Emp #
BULINSKI, MATTHEW J	3.8	483865	HELMICK, MATTHEW James	3.8	507553	HINKLE, BRADLEY Dean	3.8	512123
IPSON, TIMOTHY J	3.8	485018	NIELSON, BRANDON K	3.8	479703			

### Equipment

HES Unit #	Distance-1 way	HES Unit #	Distance-1 way	HES Unit #	Distance-1 way	HES Unit #	Distance-1 way
10724567C	17 mile	10951212	17 mile	11036301	17 mile	11341988C	17 mile
11398319	17 mile						

### Job Hours

Date	On Location Hours	Operating Hours	Date	On Location Hours	Operating Hours	Date	On Location Hours	Operating Hours
<b>TOTAL</b>	Total is the sum of each column separately							

### Job

### Job Times

Formation Name							Date	Time	Time Zone
Formation Depth (MD)	Top			Bottom		Called Out	15 - Mar - 2012	10:00	CST
Form Type				BHST		On Location	15 - Mar - 2012	14:15	CST
Job depth MD	950. ft			Job Depth TVD	950. ft	Job Started	15 - Mar - 2012	17:02	CST
Water Depth				Wk Ht Above Floor		Job Completed	15 - Mar - 2012	17:54	CST
Perforation Depth (MD)	From			To		Departed Loc	15 - Mar - 2012	19:00	CST

### Well Data

Description	New / Used	Max pressure psig	Size in	ID in	Weight lbm/ft	Thread	Grade	Top MD ft	Bottom MD ft	Top TVD ft	Bottom TVD ft
Open Hole				12.25				.	950.	.	.
9 5/8" Surface Casing	New		9.625	8.835	40.		N-80	.	931.	.	.

### Sales/Rental/3<sup>rd</sup> Party (HES)

Description	Qty	Qty uom	Depth	Supplier
CLR,FLT,TROPHY SEAL, 9-5/8 8RD	1	EA		
SHOE,FLT,TROPHY SEAL,9 5/8 8RD	1	EA		
PLUG,CMTG,TOP,9 5/8,HWE,8.16 MIN/9.06 MA	1	EA		
CNTRLZR, 9 5/8"x13 3/4",#500-0963-1375	6	EA		
COLLAR-STOP-9 5/8"-FRICTION-HINGED	1	EA		
Description	Qty	Qty uom	Depth	Supplier
BASKET - CEMENT - 9-5/8 CSG X 12-1/4	2	EA		
KIT,HALL WELD-A	2	EA		

# HALLIBURTON

## Tools and Accessories

Type	Size	Qty	Make	Depth	Type	Size	Qty	Make	Depth	Type	Size	Qty	Make
Guide Shoe					Packer					Top Plug			
Float Shoe					Bridge Plug					Bottom Plug			
Float Collar					Retainer					SSR plug set			
Insert Float										Plug Container			
Stage Tool										Centralizers			

## Miscellaneous Materials

Gelling Agt		Conc		Surfactant		Conc		Acid Type		Qty		Conc	%
Treatment Fld		Conc		Inhibitor		Conc		Sand Type		Size		Qty	

## Fluid Data

### Stage/Plug #: 1

Fluid #	Stage Type	Fluid Name	Qty	Qty uom	Mixing Density lbm/gal	Yield ft3/sk	Mix Fluid Gal/sk	Rate bbl/min	Total Mix Fluid Gal/sk
1	Fresh Water		30.00	bbl	8.34	.0	.0	.0	
2	SwiftCem 14.2#	SWIFTCEM (TM) SYSTEM (452990)	265.0	sacks	14.2	1.49	7.43		7.43
7.43 Gal		FRESH WATER							

### Calculated Values

### Pressures

### Volumes

Displacement		Shut In: Instant		Lost Returns		Cement Slurry		Pad	
Top Of Cement		5 Min		Cement Returns		Actual Displacement		Treatment	
Frac Gradient		15 Min		Spacers		Load and Breakdown		Total Job	

### Rates

Circulating		Mixing		Displacement		Avg. Job			
Cement Left In Pipe	Amount	45 ft	Reason	Shoe Joint					
Frac Ring # 1 @	ID		Frac ring # 2 @	ID		Frac Ring # 3 @	ID	Frac Ring # 4 @	ID

The Information Stated Herein Is Correct

Customer Representative Signature